

QUARTERLY

the

WINTER ISSUE
2026/5786

ROOTED IN LEGACY.
GROWING OUR FUTURE.

Contents

4

OUR FUTURE

Steve Tarnowsky, President, Temple Beth El

6

MEET RABBI DAVID

Questions & Answers

8

NEW DIGITAL LIBRARY APP

Libby ... eBook and Audiobook Free of Charge

11

NEW BRAILLE BINDERY FUND

Honoring Audrey & Herb Saperstein

13

JEWISH AFTER SCHOOL

TBE's New After School Program Fall 2026

14

RUACH SNGERS

TBE's Grades 2-6 Children's Singing Group

15

OUR CANTOR and ACCOMPANIST

Cantor Adam Davis and Dr. Joe Balistreri

16

FROM TBE TO TEL AVIV

Ido levy, a new Israeli Shinshin in the ECC

18

MAZEL TOV

New Team Members, B'nai Mitzvah, New Arrivals

21

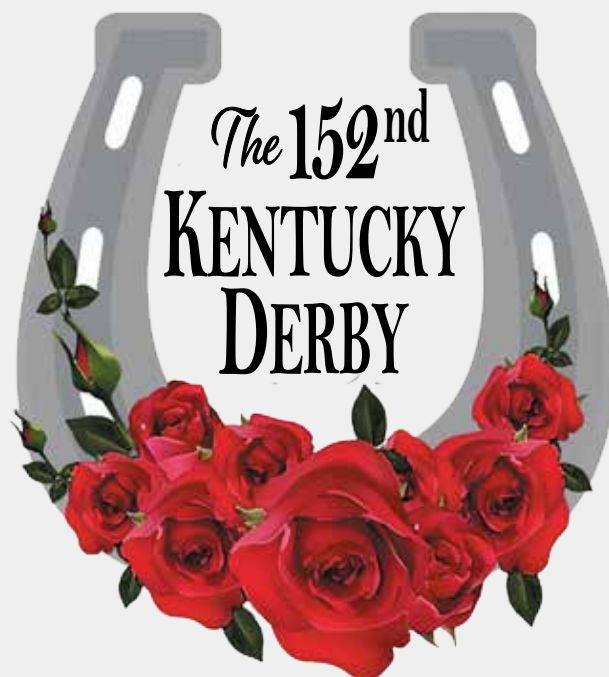
LIFE CYCLES

Yahrzeits, Birthdays, Anniversaries, Tributes

27

CALENDAR

Services, Events, Masa, ECC, Affiliates & More



*Grab your Hats & Derby Attire
and join us for our*

Kentucky Derby Party



SATURDAY, MAY 2nd

*Open to the
community!*
Details and
sponsorship
opportunities
to follow.

- Watch the Derby LIVE
- Live Simulated Racing led by a Professional MC
- Kentucky Bourbon Cocktail
- Derby Appetizers, Dinner and Dessert!

Presented by the Sisterhood & Brotherhood of TBE



TEMPLE
BETH EL



For program details,
scan the QR code or visit
us at tbeonline.org. For
assistance call 248-851-1100.

WINTER 2026: Temple Beth El, Bloomfield Hills, MI
TBE Quarterly is published four times per year.

CLERGY

Mark Miller, Senior Rabbi
Megan Brudney,
Senior Associate Rabbi
Daniel B. Syme, Rabbi
Emeritus
Deborah Morosohk, RJE,
Director of Education/
Cantorial Soloist

STAFF

Sumeira Chaudhry,
Controller
Rachel Ellis, Executive
Director

Laura Gottlieb, Director of
Cultural Resources
Ken Jackson, Director of
Security
Nicole Jahr, Director of
Engagement
Damon Kaigler, Director
of Facilities
Jamie Lefkowitz, Early
Childhood Center
Assistant Director
Melanie Weber, Director
of Communications

Susie Weiner, Director of
Early Childhood Center

BOARD OFFICERS

President:
Steve Tarnowsky
Vice President:
Ray Henney
Vice President:
Claude Reitelman
Vice President:
Carol Plisner
Vice President:
Jared Rothberger
Treasurer: Sarah Lyngaas

Secretary: Anne Weiner
Rochelle Nelson,
Immediate
Past President

AFFILIATES

Beth Elders - Elaine
Brockman
Brotherhood - Craig
Matichuk
Sisterhood - Irene Soble
Kid-ish Club - Michelle
Ernst

TBE QUARTERLY MAGAZINE is designed & produced by TBE's in-house creative department from concept through completion.

PUBLISHER: RACHEL GREY ELLIS. COMMUNICATIONS DIRECTOR: MELANIE WEBER. SENIOR GRAPHIC DESIGNER: MARIE CURTIS

The TBE Quarterly is printed in-house at TBE using true end-to-end production on RICOH USA, Inc. Pro C5310s sheetfed digital presses.

We use sustainable and environmentally friendly materials. INK: plant-based soybean. PAPER: Xerox Bold Digital 28lb. opaque acid free, SFI Certified.





Looking for an event space?

Transform your vision into reality at Temple Beth El! Whether you're planning a wedding, bar or bat mitzvah, shiva, meeting, or community event, our versatile space is ready to host it all. Paired with Platinum Dish Catering, renowned for exceptional service and cuisine, we offer everything you need to make your event unforgettable. Your perfect venue is here—Temple Beth El is ready to welcome you!

Dates are filling fast—book now and let's make your event unforgettable!



📞 248.851.1100

🌐 www.tbeline.org

📍 Bloomfield Hills, MI

📞 947.207.9957

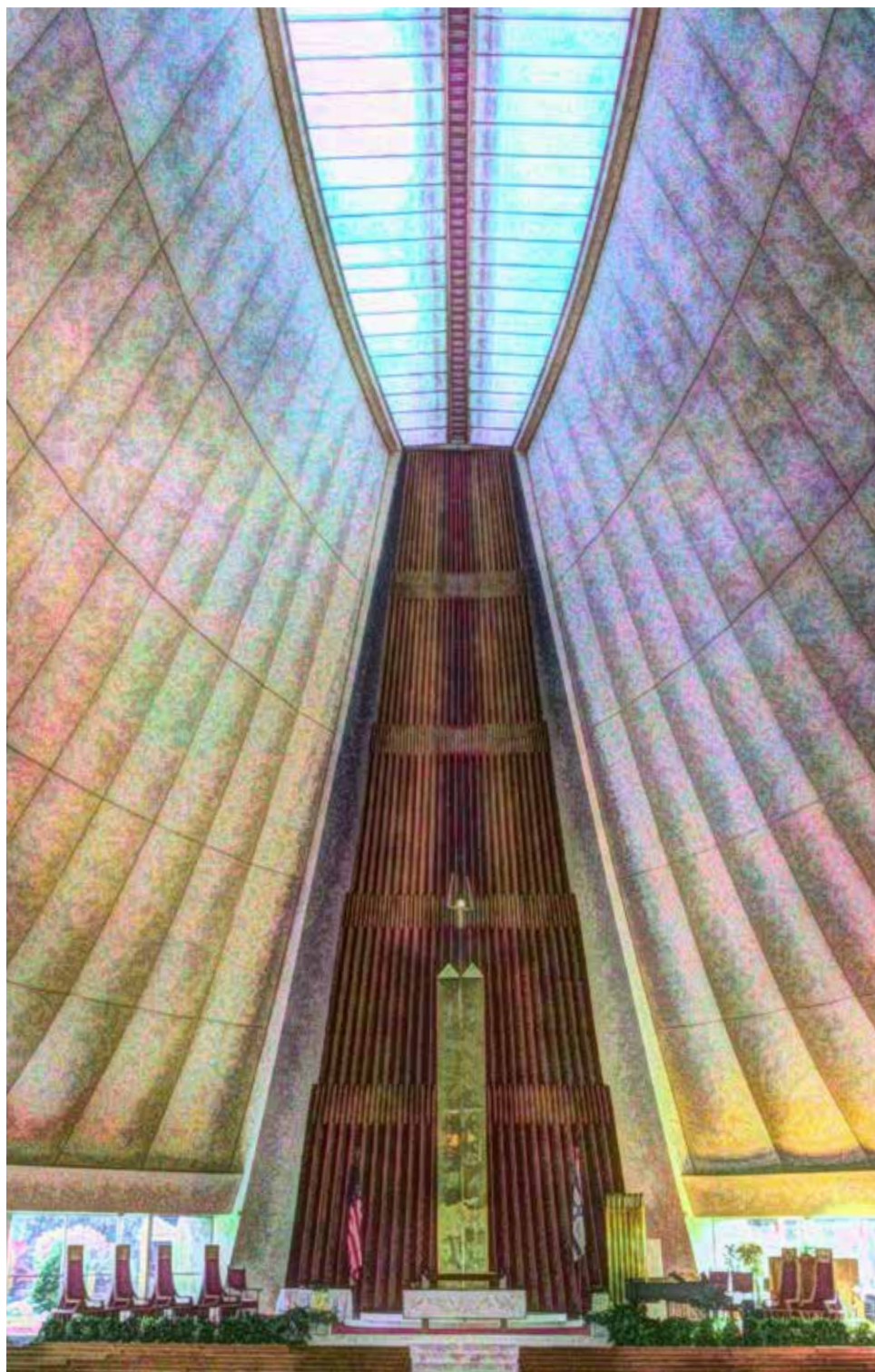


“

When we step forward, we say *hineini*—we are here—and we act with purpose, even in the presence of uncertainty.

SAVE THE DATE

as Temple celebrates
RABBI MARK MILLER on
June 5th & 6th.



Preserving and Energizing our Future

steve TARNOWSKY
President, Temple Beth El

As we contemplate our **175 years** as a congregation, we need to consider that this milestone is more than just a celebration. This past year has been a year of reflection, resilience, and determination. Like many institutions, we navigated moments of uncertainty and transition, yet each challenge reaffirmed who we are at our core: a community grounded in purpose, care for one another, and an unwavering commitment to Jewish life! Our tradition teaches us that true legacy is shaped in moments of choice.

After some self-reflection over the past several weeks, I am struck by the beauty of a relationship between a rabbi and a congregation. Almost 18 years ago, **Rabbi David Castiglione** left Temple Beth El as an Associate Rabbi to become the Rabbi at Temple Adat Shalom in Poway, CA. As **Rabbi David prepares to return to Temple Beth El as our Intentional Interim Rabbi**, he returns not just as the person who left back in 2008 but as a leader shaped by time and called by purpose. Like journeying through a labyrinth or the Jewish concept of *teshuvah*, his return bridges past and present, honoring the foundation laid before us while energizing our future alongside Rabbi Brudney with wisdom, familiarity, and renewed vision. Our relationship with Rabbi David has come full circle. We welcome him and his family back to Temple Beth El!

In our Jewish tradition that honors journeys, we also honor those who hold the center. Rabbi Megan Brudney has been reliably serving our congregation for the past 9 years, showing up when we needed her most and at times when the way forward was unclear. She has provided us with gifts of steadiness and presence. Her leadership does not necessarily draw attention to itself, yet it shapes our community deeply, simply by being there when it matters the most.

Through the dedication of our Cantorial Search Committee, our Board of Trustees, Clergy and Staff, we have found not just a cantor in Adam Davis, but a new “voice” (pun intended) and a partner in spiritual life; someone who will enhance our worship, connect us across generations, and elevate our collective experience. I am very excited about Cantor Davis’ start date on July 1st and looking forward to a very early High Holy Days this coming September. Welcome Cantor Adam Davis and Amanda Scuder (Adam’s fiancée) to Temple Beth El of Bloomfield Hills, Michigan!

On June 5th and 6th we will say farewell to Rabbi Mark Miller with deep gratitude and heartfelt appreciation. His leadership, compassion, and steady presence have left an indelible mark on Temple Beth El, shaping lives and strengthening our community, and we thank him for that. While goodbyes are never easy, we will be sending him forward with blessing and appreciation. More information on celebrating Rabbi Miller will be communicated as the details are finalized.

The next chapter of our story is already being written—by our clergy, our staff, our volunteers, and every individual who calls this community home. Thank you for your continued support and trust in me as we navigate this year of transition together!

MEET RABBI DAVID



TBE's
Intentional
Interim Rabbi

Q For those that haven't had the pleasure of meeting you yet, tell us about yourself?

A My name is David Castiglione. I have been serving full time in the rabbinate since ordination from HUC-JIR, Cincinnati in 1992. I have had the privilege of serving in three congregations, Temple B'nai Israel in upstate New York, Temple Adat Shalom in San Diego, and of course Temple Beth El. My wife Adrienne and I have partnered through life for 42 years, and we are the very proud parents of four grown sons. I am a pretty down-to-earth individual. I don't hold with pretense. I accept the limelight, though I am not drawn to it. I do not sweat the little things and deeply believe in being part of the weave of a much larger tapestry.

Q When you're not working, how do you like to spend your time?

A This is a curious question. Taking on the vows of the rabbinate is a 24 hour a day, lifetime commitment – so in a very real sense, I'm always 'on' – always a representative of our people – always called to the ethical guidelines of our faith. If I were to consider the thing that brings me most joy, aside from family time, I most enjoy enabling others to experience new discoveries of self, to relish the joy of belonging and faith expression, and shepping nachas as it unfolds. I enjoy transforming spaces and opportunities with new potential. If I were to rephrase the question somewhat, when not at Temple, aside from family time, I enjoy cooking, working in the garden, moments of quietude, and going to the movies.

Q What brings you the most joy in working with people?

A I am very conscious that our work as rabbis represents, by extension, people's relationship with God and people's relationship with Judaism as a whole. In our greetings, in our compassion and in our discovery, through our honesty and our laughter, we allow each other to

affirm the divine connection we all have but may not know or forget how to access regularly. To be in concert with heaven's purpose, even in times of profound sadness, is the most uplifting experience I have known.

Q Do you have a favorite Jewish Holiday or ritual – and why?

A I really don't have a favorite holiday. Each of them, in their own way, are rich and full of potential for growth and affirmation. That said, my favorite part of Jewish holidays and observances is sharing them with others; in our coming together with shared purpose, in helping to ignite new awarenesses, in inventing different approaches to access the meaning and objectives that history has placed within them, and in reinventing rituals to touch our lives today.

Q What does Reform Judaism mean to you right now, especially in a time of change and uncertainty?

A For me, Reform Judaism underscores innovation and represents immutable standards of equality, diversity, and inclusion. Judaism, all faiths really, have much to contend with today. But in truth, we always have. The actors change generation to generation, and sometimes a brand new, never before known challenge is thrust unto the stage, but when we boil it down, what we face today, we've faced before.

This is not to downplay the very real challenges we face. From grappling with the implications of Israel's current realities, to being responsive to current familial and personal realities, to responding as a faith community to dramatic societal pressures that run counter to Jewish teachings – all these and more demand our earnest and wholehearted investment.

Still as cultures and social pressures evolve, faith too, evolves. And we are better at this, better than most. Reform Judaism, founded in a desire for social, theological, spiritual and ethical change, has led the way for most of world Jewry, and continues to be our best chance for survival and, more importantly, relevance. To succeed it requires understanding and respecting where we've been, then finding the very courage of the post-Temple rabbis, to imagine and implement out of the box new visions.

Q You've been part of our community before. What drew you back to us at this moment, and what feels most meaningful about returning?

A Temple Beth El is a deeply rooted part of my life. She is an inextricable part of my extended family. To come home is both a joyous reunion as well as an opportunity to put my love and strength for her, a love that has never dimmed, and everything that I have

gained in the interim, to work with leadership, staff, and the congregation as a whole, to help those in need of healing, dream new dreams, and set her and all who call her home on a path of wholeness, hope, and faith. I have always carried a profound appreciation for the unique legacy role that Temple Beth El holds in Michigan, the US and the generations of those who have made her the center of their Jewish lives. As I come closer to leaving the work of the congregational rabbinate to others, I can't imagine a better service to gift God with, a way of truly expressing my gratitude for the blessings God has allowed me to employ.

Q Is there a memory or experience from your earlier time here that has stayed with you?

A To be fair, and as to be expected within community and family, there were difficult moments and completely over the top moments of great celebration. I have had the great honor of working and learning with valued and respected clergy and staff. I have known the blessing of being invited into people's lives. All these individuals, relationships and moments have remained with me, they all have taught me, and they all have informed my life as well as my continued work since. In truth, I carry nothing but cherished fondness for the years I spent growing and serving at Temple Beth El.

Q During this interim period, what feels most important for you to offer our community emotionally and spiritually?

A I bring to Temple Beth El all that I am, though hopefully a bit wiser now and definitely more seasoned. For those I have yet to meet, it is important for me to share that I fundamentally believe that we are all children of God. I believe in this holiness within you. I respect this sacred inheritance. Together with Rabbi Brudney, I will share an honest joy, embrace with sincerity, be a rock when it is called for, and give you leeway to own and explore your aspirations. I will listen without judgment. I will counsel drawing upon the ethical teachings of our rabbis and exult in your exploration and growth. Emotionally and spiritually, I will be as present for you as a fellow child of God can be.

Q Is there anything you're especially excited about as you begin this journey with us?

A Most immediately, I would be less than truthful if I didn't admit I am very excited for the reunions with old friends, and the new relationships still to be born with those I have yet to meet. I am excited to build bonds of common cause and support with TBE's lauded clergy and staff. I am overwhelmed, in the best of ways, by this privilege of a lifetime to endeavor and create within the community of TBE again.



Libby.



NEWS from the Prentis Memorial Library—we now have access to the LIBBY APP!

laura GOTTlieb
Director of Cultural Resources



This exciting announcement is made possible by the Lyle & Diane Victor Library Innovation Fund.

The fund was established in 2025 by the Victor family to help ensure the library has the latest technology and engagement resources, like a digital library. Many people today enjoy reading on eReaders (such as Kindles or iPads) and listening to audiobooks. Thanks to the generosity of this new fund, we are proud to now offer an incredible digital library service to all Temple Beth El members - **FREE OF CHARGE!**

NEW
DIGITAL eBook
and audiobook
LIBRARY APP for
Temple Beth El!



FAQS

So, what exactly is Libby?

Libby is a free app where you can enjoy eBooks and digital audiobooks, and magazines from your public library. You can stream titles with Wi-Fi or mobile data, or download them for offline use and read anytime, anywhere.

Is Libby free?

Yes, Libby is completely free. It's free to install, and there are no subscription costs, no in-app purchases, and no late fees.

What devices does Libby work on?

Enjoy Libby on almost any device! You can download the Libby app on a phone or tablet or use libbyapp.com in a web browser. Once you've borrowed a title, listen to an audiobook in your car, transfer an eBook to an eReader, and more.

What books can I find in Libby?

Similar to our physical collection, the Prentis Memorial Library (PML) collection on Libby features eBooks and audiobooks by Jewish authors and about Jewish experiences. From children's holiday books to biographies of famous Jews to the bestsellers and classics, there is so much to discover on Libby. The PML Libby library will expand on our mission to connect you to Jewish stories and storytellers. Libby is only for digital content, so it does not include any physical materials from the library - those titles will still be available in person, like always!

Do I need a library card?

For the PML Libby library, all you will need is the email associated with your Temple Beth El membership account. If you are not sure what email will work, need help adding a different email, or any other questions about logging in, contact Laura Gottlieb at lgottlieb@tbeonline.org or call 248-865-0627.

Can I use the PML Libby page if I already have a card linked with my public library?

Yes! The more libraries the better - it means more access to a variety of titles! Follow steps 2-5 in "How to Start Reading on Libby" and you can then toggle between your libraries without signing out.

We extend our **deep gratitude to the Victor family** for both the motivation to provide a service to better engage our Temple Beth El members with Judaism and literacy and providing the generous funds to make it happen. **Thank you!**

Borrow audiobooks for free!

GET STARTED

1. Download the Libby App on your smartphone, tablet or visit Libbyapp.com on any browser.
2. Select **Add Library** and search for Temple Beth El.
3. Choose **Sign In With My Card**.
4. Enter your library card number — this is the **email address** associated with your ShulCloud account.
5. Browse audiobooks and eBooks from the Prentis Memorial Library collection and **start reading!**



COOL FEATURES

• KIDS CAN ENJOY, TOO!

There are loads of children's books too, plus some that have a "read aloud" feature that reads the story to your child!

• READ ACROSS DEVICES

All your loans, notes, bookmarks, and reading progress sync across your devices.

• OFFLINE ACCESS

Download eBooks and audiobooks for offline reading or stream them to save space.

• LISTEN IN YOUR CAR

Enjoy audiobooks in your car with Apple CarPlay, Android Auto, Android Automotive, or Bluetooth.

• SEND TO KINDLE

If you prefer reading on your Kindle, Libby can send your library books to it.

• GET NOTIFIED

Never miss a hold.

• TAG IT FOR LATER

Create your very own to-be-read list.



HONORING Audrey & Herb Saperstein

At Temple Beth El, we often speak of *Tikkun Olam*—repairing the world. While many of us contribute through prayer or occasional service, some among us weave this mission into the very fabric of their lives. Today, we celebrate Audrey and Herb Saperstein.

beth MICHELSON
Certified Braillist, TBE Braille Bindery



A Vision Sustained

The Sapersteins have recently made a generous gift of \$25,000 to establish The Audrey and Herb Saperstein Braille Bindery Fund. This endowment is more than just a financial contribution; it is a promise for the future. By supporting the essential operations of our bindery—from the specialized paper and supplies to the maintenance and acquisition of high-tech embossers and braille software—this fund ensures that our mission of promoting literacy and accessibility will endure for generations to come.

What makes Audrey and Herb's contribution truly extraordinary is that it is backed by years of "sweat equity." Every Tuesday morning, you will find the Sapersteins at the heart of the bindery's operations:

Herb is our resident "mechanical whisperer." Whether he is expertly operating the binding machines or troubleshooting a technical glitch, Herb ensures the wheels of production never stop turning.

Audrey is a pillar of precision. She manages the processing of volumes and serves as our final line of defense, providing the meticulous inspection of every book before it is boxed for delivery.

The Sapersteins' generosity arrives at a pivotal moment. The bindery has experienced a remarkable period of growth, doubling its output in recent years.

While we look toward the future with the new Saperstein Fund, we also honor the foundation upon which we stand. The Temple Sisterhood has remained a steadfast champion of the bindery since 1952. It is this synergy—the historic support of the Sisterhood combined with the visionary generosity of the Sapersteins—that supports our future.

Donate to The Audrey & Herb Saperstein Braille Bindery Fund by scanning the QR code.



TO AUDREY & HERB: *Thank you for your leadership, your labor, and your heart. Because of you, thousands of children will continue to experience the joy of reading with their fingertips.*





Jewish After School Program

debbie MOROSOHK
Director of Education/Cantorial Soloist

Temple Beth El is very proud and excited to have been admitted to Cohort #4 of the **Jewish After School Accelerator (JASA)**. That means that over the next months, JASA will be providing us with the tools, guidance, curriculum, and financial support we need to open a quality **Jewish After School program in the fall of 2026**.

Jewish After School bundles Jewish learning with an existing family need for weekday childcare after the school day ends. Jewish organizations are always pursuing new ways to engage families that are flexible, convenient, accessible, and welcoming, and this is a new and innovative initiative that will do all of that. Our after-school program will be for grades K-5 and provide transportation from their schools to TBE.

The program will include healthy snacks, homework help and play time. Our program will also provide deep Jewish learning and connection opportunities through an experiential curriculum designed specifically for the after-school environment. The goal is to provide Jewish camp-style fun all year long.

Jewish after-school students will play and learn at the same time. Like summer camp every day after school, students in our Jewish After School program will build things, make art, laugh, sing, play sports, perform, and more through a Jewish lens that builds connection and confidence. The program will provide flexible schedules and be open to the Metro Detroit community.

Over the next few months, as I work with JASA, our staff, advisory committee, and the TBE Board of Trustees to develop the details of our plans for this fall, look for more information and the opening of registration in the spring.

RUACH SINGERS

Temple Beth El welcomed a burst of youthful spirit with the launch of the **RUACH SINGERS**, a children's singing group for grades 2–6. *Ruach*, the Hebrew word for “**SPIRIT**,” perfectly captures the energy this group brings: joyful, youthful, and full of heart.

Truly, it has been an amazing experience to lead this incredible group of singers, and the ensemble has already been a resounding success. Twelve students participated in the group's first cycle, which culminated in a spirited performance at this year's Chanukah Sing-A-Long. Through regular rehearsals, students have been building vocal technique, musical skills, confidence, and—just as importantly—community. Watching them support one another, take musical risks, and sing proudly together has been a true highlight of the season.

We are excited to continue this momentum into the coming semester, when the Ruach Singers will perform at two E for Everybody Shabbatot, sharing their voices with the wider congregation and helping to make our worship experiences even more inclusive and joyful. The success of the Ruach Singers would not be possible without the incredible collaboration of our keyboardist, Joe Balistreri, whose musicianship and steady musical foundation have empowered our young singers to shine. The Ruach Singers remind us that the heart of our synagogue beats strongest when our children lead us in song.





MEET TEMPLE'S NEW ACCOMPANIST DR. JOE BALISTRERI

Recognized for “especially moving” interpretation (The American Organist) and “impressive technique and bristling enthusiasm” (The Diapason), Joe Balistreri has enjoyed a varied and rich career in sacred music, serving Roman Catholic, Lutheran, Episcopalian, and Jewish congregations. For a decade, he was music director of Detroit’s Roman Catholic cathedral where he directed the choirs, was the principal organist, and served the community through a robust concert series and a training choir program for youth.

Through story and song, Joe shares his love for music, inviting all to consider the beautiful ways that music, life milestones, and meaning intersect.

Joe holds degrees in organ from the University of Michigan and recently earned a Doctorate in Musical Arts from Sacred Music Notre Dame. He currently serves as Director of Music of historic St. Matthew Catholic Church in Detroit and Accompanist with us.



We are thrilled to share wonderful news for our Temple Beth El community!

With unanimous support from the Cantorial Search Committee and the Board of Trustees, we are delighted to announce that **Cantor Adam Davis** will join Temple Beth El as our new Cantor beginning July 1st,

Cantor Davis is a member of the American Conference of Cantors and a graduate of the Debbie Friedman School of Sacred Music at Hebrew Union College–Jewish Institute of Religion in New York. He also holds a Bachelor of Fine Arts in Musical Theatre from the University of Cincinnati’s College-Conservatory of Music. His background blends sacred music, artistry, and a deep love of Jewish life. *(Read more about Cantor Adam in our upcoming SPRING ISSUE of the TBE QUARTERLY)*



CANTOR ADAM DAVIS



Scan the QR code to learn more about Cantor Davis.



An ECC Adventure

From Temple Beth El to Tel Aviv

susie WEINER

ECC Director



Every September the ECC children welcome a new Israeli shinshin, and this year Ido Levy has truly dazzled us here at TBE. Ido is 18 years old and is spending the year in the Metro Detroit area sharing his love of Israel with our community.

In early November, Ido creatively launched an "Israel Comes Alive" study. Each child received a passport and created a self-portrait for the first page. The journey began with a mock "flight" to Israel, complete with videos of landing in Tel Aviv and even airplane snacks.



So far, the preschool classrooms have "traveled" to Jerusalem and Tel Aviv. As the children visit each city, their passports are filled with corresponding stickers/stamps. In the Old City of Jerusalem, the children built the Kotel using blocks and cool sponges and even wrote notes (wishes) that Ido will take back to Israel in February.

During their visit to Tel Aviv, the children experienced a graffiti tour of this vibrant city. Ido created a Tel Aviv inspired poster for each classroom, allowing the children to experience graffiti art firsthand. They also learned about *Matkot*, a popular Israeli beach paddle game, which they recreated using paper plates and balloons.





In addition to these experiences, Ido brings music, theater, and boundless enthusiasm to ECC each Tuesday.

We look forward to where our journey through Israel will take us next. Through these meaningful hands-on experiences, our children are forming a love and lasting connection to Israel at Temple Beth El.



Meet TBE's new TEAM MEMBERS



MASA DIRECTOR

Prentis Education Program Grades K–12

DR. LORRY BLACK brings energy, creativity, and deep expertise to our community. With a doctorate in Sacred Music from USC and extensive experience leading Jewish education and music programs across the country, Lorry is uniquely positioned to shape the future of Jewish learning at Temple Beth El.

Most recently, he served as Director of Lifelong Learning at Congregation Shir Tikvah in Troy. He previously held leadership roles at UCLA and in Reform congregations nationwide, developing innovative curricula and engaging educational experiences.

We are confident that under Lorry's leadership, Masa will continue to inspire the next generation with joyful, meaningful Jewish learning.



B'NAI MITZVAH COORDINATOR & CANTORIAL ASSISTANT

SAMANTHA BLOSSER grew up in the small town of Temperance, MI, and was raised in the reform Jewish community at Temple Shomer Emunim. She attended Western Michigan University on the prestigious Medallion Scholarship and graduated in 2018 with a Bachelor of Music in Jazz Studies.

Since moving to metro Detroit, she has built a reputation as a passionate educator, teaching music privately through various programs (including as Michigan State faculty and Music Hall staff) and presenting her masterclass on music and mental health through JazzEd Detroit. She has also taught martial arts and holds black belts in both GoJu-Ryu karate and Tae Kwon Do. You can find her playing saxophone and singing around town with her various musical projects.

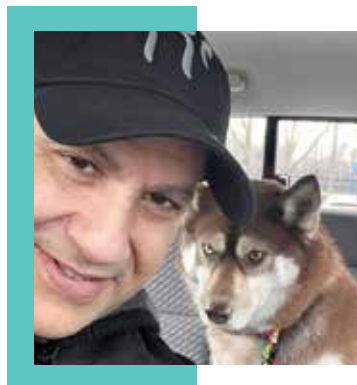
Sami is thrilled to be the new B'nai Mitzvah Coordinator and Cantorial Assistant at TBE. She's looking forward to assisting our b'nai mitzvah families in ensuring the administrative process is smooth and organized on the journey to their simcha.



CONTROLLER

SUMEIRA CHAUDHRY joined the TBE team in July 2025 as the Controller of the Finance Department. Born and raised in a Third World country, Sumeira brings with her a rich understanding of diverse cultural values and global perspectives. With 25 years of experience in financial management—including 20 years dedicated to the nonprofit sector—Sumeira has developed deep expertise in both financial and project management across international settings.

Temple Beth El is the first religious organization she has served, and she joined with genuine enthusiasm for contributing to the community in this new capacity. Sumeira is excited to support and grow with the Finance and Management Team at Temple Beth El, bringing her commitment, passion, and expertise to the organization.



SECURITY

JACOB MALOUF grew up in a Christian Lebanese community and was first introduced to the Jewish people at a young age, when the IDF came to protect his community from Islamic militants and the PLO. He remains deeply grateful for the role Israel played in safeguarding his people during that time.

After immigrating to the United States in the late 1980s, his interest in Jewish life, values, and faith continued to grow. He studied Judaism and, over time, chose to convert.

Today, it is especially meaningful for him to serve and protect the Jewish community—completing a full-circle journey with the people who once protected him as a child. For this, he is forever grateful. Jacob is happy to be a part of the Security team.



ENGAGEMENT COORDINATOR

LAINHEY MORTON is the Engagement Coordinator at Temple Beth El and loves being one of the first people members and visitors connect with when they walk through the doors or call the temple. Lainey graduated with a Bachelor's in Photography from the College for Creative Studies.

In her role, she works closely with the Director of Engagement to support programs, events, and volunteer opportunities that help build meaningful relationships within the congregation. Lainey is passionate about creating a welcoming, organized, and inclusive environment where everyone feels seen and supported.

In her free time, she enjoys taking photos, painting, crocheting, and playing with her cat. She especially enjoys helping members feel at home at Temple Beth El and being part of a community that values connection, tradition, and belonging.



EXECUTIVE ASSISTANT TO THE RABBIS

KYEISHA WARD is excited to join the clergy team as the Assistant to the Rabbis! As a Western Michigan University graduate and most recently a HUD certified housing counselor, transitioning back to administration has been an answered prayer.

Having over 25 years of executive administration experience, specifically with several denominations of religious organizations and communities, Temple Beth El is an amazing landmark on her career path. This a full circle moment as Kyeisha grew up in Oak Park, MI and always wanted to learn from a Rabbi and now she has two within reach! Kyeisha is looking forward to serving and sharing together! Shalom!

Mazel Tov B'NAI MITZVAH



BAT MITZVAH OF BRIELLE SILVERSTEIN

FEBRUARY 28, 2026

Brielle is the daughter of Amy and Corey Silverstein, granddaughter of Joy Silverstein, and the late Dr. Avery Silverstein, Todd Hermann, and Pamela Hermann. Brielle is a student at Derby Middle School in Birmingham.



BAT MITZVAH OF GABI SCHWARTZ

APRIL 11, 2026

Gabi is the daughter of Nikki and Greg Schwartz, sister of Allie & Trevor, granddaughter of Renee & the late Tom Guttmann and of Wendy & Mark Schwartz. Gabi is a student at a local private school. Her mitzvah projects include advocating for girls and women in sports as well as raising money to promote equal access for girls in sports in Metro Detroit.



BAR MITZVAH OF DYLAN PHILIP SPILMAN

APRIL 25, 2026

Dylan (Moishe Fitel) is the son of Jodi and Barry Spilman, sister of Samantha, grandson of Ellen & Jerry Minkin and Fran & Gil Spilman. Dylan is a student at Derby Middle School in Birmingham. His Mitzvah project was delivering food for Yad Ezra in Berkley.



BAT MITZVAH OF HALLIE MAUCH

APRIL 25, 2026

Hallie is the daughter of Annie and Sam Mauch, older sister of Brooke, granddaughter of Robert Cobb & Arlene Kass, and the late Jane Cobb, Art & Marcia Mauch, Sherri & George Glassman; and Steven & Kim Friedman. She is a student at South Hills Middle School in Bloomfield Hills. Hallie's mitzvah project focuses on raising funds for Taproots at Camp Walden, a non-profit that gives children an opportunity to experience summer camp.



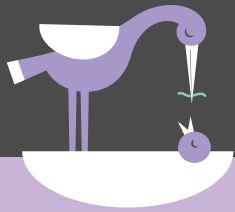
Tributes

Honor a Bar/Bat
Mitzvah Student



Access

Livestream Services



Our New ARRIVALS



TYLER KOENIG

APRIL 26, 2025

Proud parents are Stephanie and Jared Koenig and baby brother of Cameron.



ELI WEISS

SEPTEMBER 20, 2025

Proud parents are Lindsay & Matthew Weiss and baby brother of Ella.



SKYE FIA MANN

MAY 8, 2025

Proud parents are Taylor and Ryan Mann.



HENRY & HUDSON LEFKOWITZ

OCTOBER 4, 2025

Proud parents are Jamie & Brandon Lefkowitz and baby brothers of Levi. Grandparents are David & Janet Gans, Beth & Andy Cable, Morrie & Laurie Lefkowitz, Gloria Lefkowitz & Marc Kircos. Great grandparents are Marilyn & Walter Wolpin and Suzanne Schatz.



IVY BAUM

MAY 15, 2025

Proud parents are Natalie and Andy Baum and baby sister of Charlie & Henry.



OWEN DELANEY

OCTOBER 23, 2025

Proud parents are Rachel & Benjamin Delaney and baby brother of Brody & Robbie.



GERALD G. COLE

AUGUST 8, 2025

Proud parents are Kathryn Repicky and Ben Cole.



EVE SIMON

NOVEMBER 30, 2025

Proud parents are Katherine & Zachary Simon and baby sister of Grant and Claire.



RAFAEL LUCIO GLAZER SILVA

AUGUST 23, 2025

Proud parents are Catherine Benedict Glazer and Adriano Lucio Silva. Grandparents are Mark & Mania Glazer and Expedito & Diciula Silva.

FEBRUARY 1

Mynetta Christie
Sammy Goren
Madeline Minkin
Rick Rattner
Ari Welsh

FEBRUARY 2

Ruby Bagdade
Nancy Jacob
Anne Mendelson
Judy Schwartz
Tare Wigod

FEBRUARY 3

Nancy Blieden
Judith Greenstone
Miller
Russell Lynch
Charles Whitelaw

FEBRUARY 4

Matthew Chasnick
Samantha Paolercio
Ruth Talmer
Francine Adler
Todd Sable
Dan Weckstein

FEBRUARY 6

Pamela Applebaum
Oliver Berk
Stan Chodun
Alex Hartman
Erik Saperstein
Daniel Syme
Jean Willens

FEBRUARY 7

Collin Hermes
John Kamins
Jack Simon

FEBRUARY 8

Adi Smorgonsky
Carol Tickton
Jessica Weisman

FEBRUARY 9

Drew Dorfman
Kacey Kroll
Carol Lawrence
Ellie Morosohk
Jennifer Toby
Ronald Weiss

FEBRUARY 10

Sue Lepler

FEBRUARY 11

Adam Dellavecchia
Sovel
Levi Dixon
Laurie Lipman
Burt Salinger

FEBRUARY 12

Jeffrey Bagdade
Susan Bloom
Lacey Foon
Lenny Kerwin
Peggy Novick

FEBRUARY 13

Grant Blau
Risa Blau
William Hall
Karen Halpern
Terri Litt
Ella Rothstein

FEBRUARY 14

Carol Birnkrant
Heather Hermes
Cash Korotkin
David Leib
Piper Lutz
Bennett Trapp
Susan Weisberg

FEBRUARY 15

Donovan Brown
Marilyn Dizik
Morgan Kaplan
Phyllis Loewenstein
Wendy Newman
Bruce Plisner

FEBRUARY 16

Sawyer Dunn
Gavin Handelsman
Rose Handleman
Mark Kotik
Larissa Shain
Reese Weisman
Hank Wineman III

FEBRUARY 17

Linda Deutsch
Barbara Freeman
Jessica Gertner
Lisa Katzman
Amelia Margolis
Diane Victor

FEBRUARY 18

Elana Ackerman
Ryan Beebe
Jacob Gottlieb
Alla Khankin
Morris Potash

FEBRUARY 19

Chloe Craig
Alexander Lewis
Luca Mollo
Lyle Victor

FEBRUARY 20

John Dolch
Lauren Leach
Michael Lembersky
Sally Reinicke

FEBRUARY 21

Aaron Cetner
Rochelle Imber
Ellen Jacobowitz
Kenneth Lawrence
Michael Leib
Parker Levin

FEBRUARY 22

Lisa Allen
Barbara Bachman
Crosby Friedman
Karen Kushkin
Randi Levy
Emily Sherman

FEBRUARY 23

Ruthie Jeffries
Matthew Kushner
Hunter MacWilliams
Stacy Schaeffler
Cindy Schoenbart
Craig Singer
Alissa VanderKooi

FEBRUARY 24

Richard Blieden
Mark Hauser
Ronald Klein
Heidi Levine
Lisa Rothberger

FEBRUARY 25

Shel Fuller
Barbara Mayer
Daphne Salter
Ryan Schwartz
Ted Sherman
Jillianne Von Gott

FEBRUARY 26

Natalie Baum
Danielle Burwick
David Kemper
Alex Lebedinski
Anne Mauch
Sarah Ostheimer
Miles Remer
Sydney Rosenberg
Bobby Wein

FEBRUARY 27

Debbie Hackman
Ellie Sachs
Adelina Shapiro
Robert Simon

FEBRUARY 28

Sue Canvasser
Fischer Farbman
Gayle Floyd
Skylar Modell
W. Fair Radom
Madelyn Rennert
Brielle Silverstein
Deborah Stein

MARCH 1

Gabrielle Blau
Todd Burwick
Ann Conrad
Marjie Federman
Sandy Hermanoff
Marsha Rofel
Adam Rosenberg
Landon Shain
Sarah Shapiro
Evie Szirtes

MARCH 2

Nancy Baron
Gary Berg
Nancy Brudney
David Colman
Michele Davis
Dotty Decker
Bill Haughey
Ken Posner
Harlan Simmons
Melissa Spickler

MARCH 3

Kenzie Bielfield
Merrilee Broder
Bennett Burwick
Ryan Lewis
Golda Lutz

MARCH 4

Seamus Burke
Emily Cetner
Martin Darvick
Penelope Epstein
Jon Haber
Jean Simon

MARCH 5

Lyndsay Ball
Jesse Fenton
Debbie Marwil
Norma Pont

MARCH 6

Susan Kaplan
Greg Schwartz

MARCH 7

Michele Maloff
Jason Raznick
Wyatt Schiller

MARCH 8

Dennis Freeman
Ira Margolis
Jackson Blau
Callan Curran
Isla Frankel
Myron LaBan
Michael Zonder

MARCH 10

Ethan Cliff
Allison Frankel
Harriett Hollander
Adam Kessler
Ezra Stav

MARCH 11

Shane Handelsman
Lana Lembersky
Shoshana Saraquese
Michelle Scavone
Elizabeth Wojtowycz

MARCH 12

Lorie Kessler
Nathan Stotland
Stella Werner

MARCH 13

Howard Baron
Estelle Kwartowitz

MARCH 14

Rose Gerlants-
Mavashev
Ryan Gertner
Gaal Karp
Katie Leibhan
Debbie Morosohk
Nancy Powell

MARCH 15

Daniel Fischer
Sarah Futernick
Margaret Gantz
Matthew Peven
Margie Sandy

MARCH 16

Mark Birnhart
Elayne Greenspan
Tonja Lawrence
Harold Margolis
Boris Perehodnik
Sarah Rappaport
Bella and Lev Shleypak
Sherry Singer
Reese Stern
Jennifer Werbling
Hudson Wurn

MARCH 17

Sally Curran
Shelby Dixon
Robert Lisak
Sharon Obeler
Jordan Schaeffler
Allie Schwartz
Jon Shaw

MARCH 18

Shayna Goren
Mitchell Greenberger
Elizabeth Kaner
John Kessler
Sarah Myers

MARCH 19

Norman Ash
Josh Berg
Chloe David
Oakley Friedman
Mark Rubinstein

MARCH 20

David Miller
Miles Minne
Tony Shields
Greg Glickfeld

MARCH 21

Jack Harris
Staci Lichterman
Jordan Marcus
Darren Rosenberg
Winnie Szirtes
Diane Weisberg

MARCH 22

Jonathan Borenstein
Cheryl Kerwin
Adam Robin
Marnie Rubinstein
Emma Sable
Mark Schwartz
Scott Sircus
Sue Turner

MARCH 23

Miles Dizik
Arnold Joseff
Brian Kern
Joel Miller
Millie Minkow
Edward Weberman
Alana Wildern

MARCH 24

Evan Cardew
Sue Goldsmith
Jennifer Weckstein

MARCH 25

Laila Feldman
Cameron Koenig
Stuart Michaelson
Leah Salzenstein
Trevor Schwartz
Michael Siegel

MARCH 26

Jeff Lutz
Fred Simon
Marla Singer
Leni Wolf

MARCH 27

Denny Brown
Amy Farbman
Mason Fillmore
Emily Ishbia
Kim Kerwin

MARCH 28

Sue Efros
Benjamin Gordon
Gale MacWilliams
David Riger
Mark Shain

MARCH 29

Ellory Becker
Mark Canvasser
Phoebe Foon
Eloise Foon
Danielle Gabbard
Myrle Leland
Steven Scharg

MARCH 30

Alicia Chandler
Jim Deutchman
Robert Dresner
Kelly Paulisin-Smith
Noah Sklar
Brittany Yaffa-Ossipove

MARCH 31

Chuck Jacobowitz
Michael Kent
Michelle Lame
John Lawson
Mearyl Roberts
Avraham Slatkin

APRIL 1

Doug Brown
Marcia Delidow
Marci Graff
Elisabeth Kelman
Leah Kotik
Chloe Leibhan
Jeffery Roth

APRIL 2

Ari Boyd
Jeannie Dubin
Joan Jampel
Declan Kramer
Jax Wiegert

APRIL 3

Barbara Goldman
Hanley Gurwin
Ted Harper
Olivia Herrin
Michael Holzman
Ross Kaplan
Betty Maltz
Julian Prince
Raquel Rosenfeld
Margot Smith
Alexander Sorser
Gemma Wolf
Jeremy Wolfe

APRIL 4

Kyler Brown
Samuel Mauch
Bob Resnick

APRIL 5

Michelle Blau
Matthew Gurwin
Debbie Kaplan
Matthew Rappaport

APRIL 6

Oliver Blank
Elyse Foltyn
Stewart Frank
Judy Jassenoff
Irv Lorber
Karen Myerson
Nancy Rosen
Barbara Urdan

APRIL 7

Jack Behrendt
Noah Behrendt
Sophie Cohen
Sarah Crane
Dean Friedman
Ari Hollander
Alan May
Talia Ross
Gwen Weiner
Ilene Wolf

APRIL 8

Randy Blau
Caryn Emmer
Traci Feldman
Darrin Levin
Levi Rothberger
Lindsay Scurti
Elle Shapiro
Oliver Stav
Michelle Trapp

APRIL 9

Leo Cetner
Sebastian Colman
Elliott Greenspan
Linda Michaels
Susan Rosenberg
Jordan Stav
Jeremy Werner

APRIL 10

Alan Ackerman
Krys Alexander
Jane Borenstein
Benjamin Dizik
Andrew Goldberg
Amy Greenberg
Dylan Spilman
René Taub
Colleen Werner
Robert Wineman

APRIL 11

Betty Applebaum
Willie Hoffa

APRIL 12

Alexis Federman
Jerry Kline
Bryson Matichuk
Warren Rose
Gabi Schwartz

APRIL 13

Cathy Deutchman
Frank Grawi
Aliyah Lurie
Paul Rubin

APRIL 14

David Foltyn
Betty Gottlieb
Ellen Lichterman
Maxine Roberts
Jodi Robin
Pearl Solomon
Ellery Weckstein

APRIL 15

Arlene Gendelman
Rick Soble

APRIL 16

David Brockman
Eli Chodock
Joel Waldbott

APRIL 17

Julian Berk
Norty Chaiken
Frankie Coden
Coco Colman
Scott Hermes
Margo Kline
Ryan Weisberg

APRIL 18

David Bloom
Kim Dickstein

APRIL 19

Stuart Novick
Kyle Wildern
Marley Wolf

APRIL 20

Sloane Cannarsa
Debra Darvick
Julie Raider
Jana Rose
Von Gott

APRIL 21

Adam Berk
Maxine Canvasser
Paige Colman
Peter Cooper
Mary Epstein
Charlie Feldman

Justin Hamburger
Margie Kaplan
Connie Ross
Joel Szirtes
Joan Winkelman

APRIL 22

Robert Colman
Donald David
Jeffrey Friedman
Francine Menken
Keith Schonberger
Marina Smorgonsky

APRIL 23

Jason Hittleman
Scott Landers
Karin Stollman-Johnson

APRIL 24

Willa Burwick
Suzette Chaiken
Daniel Redstone
Michael Rothstein
Brian Smith

APRIL 25

Ronnen Golombek
David Handleman
Brian Kott
Marcy Leland
Emily Levin
Zachary Rappaport
Justin Weiner

APRIL 26

Elisa Dreyfuss
Arthur Epstein
Nancy Fortier
Adele Goldstein
Nancy Josephson
Phyllis Kaplan
Carter Rennert
Jenn Zeidman

APRIL 27

Lawrence Bluth
River Farbman
Stacy Korotkin
Jodi Weiss

APRIL 28

Lenny Newman
Whitney Welbourne

APRIL 29

Erin Monroe
Jodi Panter

APRIL 30

Carolyn Greenberg
Ruth Plotnik
Maximillian Rybak
Ryan Seeney

**RAYMOND & SHIRLEY ABRAMS
YOUTH GROUP RECREATION FUND**

IN MEMORY OF

LILI BRODE
MAXINE CANVASSER
DR. SHELDON SCHWARTZ
JEFFREY SLATKIN
Henry & Wendy Abrams

BROTHERHOOD

IN MEMORY OF

STEVEN M. MILLER
Joyce Meckler-Miller

**RABBI MEGAN BRUDNEY
DISCRETIONARY FUND**

IN HONOR OF

RABBI MEGAN BRUDNEY
Joyce Meckler-Miller
MITCHELL GREENBERGER
Robert & Renee Greenberger

IN MEMORY OF

DANIEL KESSLER
JOSEPHINE KESSLER
JAMES SLOWIK
Amy Kessler
DR. MARC ALLAN FISHMAN
MINNIE STEIN
Wendy Fishman
JOYCE LABAN
Myron LaBan
SHELDON STERN
The Family of Sheldon Stern

**THE ALEXANDER DAVID
BURNSTEIN FOR MUSICAL
PERFORMANCE**

IN MEMORY OF

ALEXANDER BURNSTEIN
Susan Chekaway
Helen Greenbaum
Peter Miller
Laurie Sabin
Michael Zwick

**RUTH FRANKLIN EINSTEIN
EDUCATIONAL ASSISTANCE FUND**

IN MEMORY OF

LEE MARKS
Carol Schwartz

IN HONOR OF

SISTERHOOD
Joyce Meckler-Miller

DEUTCHMAN FAMILY FUND

IN HONOR OF

JIM DEUTCHMAN
Marc & Jan Dunn

**PEGGY M. & DENNIS N. FRANK
SOCIAL SERVICE FUND**

IN HONOR OF

DR. JAMES ALLEN JONES
Michael Katsky

**RABBI LEO M. FRANKLIN
ARCHIVES FUND**

Sylvia Pevin & George Pevin Foundation

GENERAL FUND

IN HONOR OF

MARY CATHERINE AND BOBBY
WEINER'S WEDDING
Doug London
REAGAN MARIE DAVID
Ted David
RUTHIE JEFFRIES BAT MITZVAH
Henry & Caryn Hirsch
TEMPLE BETH EL
Lisa Lis
AUDREY ZUPMORE'S 90TH BIRTHDAY
Randee Kovacs

IN MEMORY OF

LEE MARKS
Flora Goldfarb
Barbara & Erwin Gutenberg

**THE MICHELSON-HABER
MEMORIAL FUND**

IN MEMORY OF

MAXINE CANVASSER
Daniel & Jody Boorstein

DAVID & ROSE HANDLEMAN FUND

IN MEMORY OF

LEE MARKS
David & Rose Handleman

**HOWARD & CELIA JACOBSON
MEMORIAL FUND FOR THE BETH
ELDERS OF TEMPLE BETH EL**

IN HONOR OF

THE BETH ELDERS
Joyce Meckler-Miller

IN MEMORY OF

DELORES SHINDLE
David & Elaine Brockman

**CANTOR RACHEL GOTTLIEB
KALMOWITZ MUSIC FUND**

IN MEMORY OF

MICHAEL KRASCHMAN
Ken Korotkin

**ELLIN, HAROLD & WILLIAM
LAWSON INSTITUTE FUND**

IN HONOR OF

DEBBIE MOROSOHK
Lee & Sandy Marks

ALAN LOWEN BNAI MITZVAH FUND

IN HONOR OF

UNCLE RONNIE & AUNT LAURA
MILLER 50TH ANNIVERSARY
SHIRA & JACOB STEINFELD
MARRIAGE
Alan & Karen Lowen

IN MEMORY OF

JOSHUA LEVINSON
Alan & Karen Lowen

**MARSHALL & PHYLLIS
LOEWENSTEIN FAMILY
CAMPSHIP FUND**

IN MEMORY OF

LEE MARKS
Rick & Dana Loewenstein

**RABBI MARK MILLER
DISCRETIONARY FUND**

IN HONOR OF

RABBI MARK MILLER
Joyce Meckler-Miller

IN MEMORY OF

MARGARET FLEISCHAKER
STANLEY FLEISCHAKER
Barbara Fleischaker

**LESTER & JEWELL MORRIS
CULTURAL ARTS FUND**

IN MEMORY OF

DR. MALCON WECKSTEIN
Jeffery Sissors & Sharon Edelman

**PRENTIS MEMORIAL
LIBRARY FUND**

IN HONOR OF

THE LIBRARY
Denny Brown

IN MEMORY OF

LEE MARKS
Joyce Meckler-Miller

**AUDREY & HERB SAPERSTEIN
BRAILLE BINDERY FUND**

IN HONOR OF

LIZ & RICK
Julie Maskin

IN MEMORY OF

LEE MARKS
MICHAEL (MICKEY) SALTER
Herbert & Audrey Saperstein
LEE MARKS
Meredith Orloff
Melanie & Brad Weber
BARBARA BENSMAN
Bruce & Laura Saperstein

SISTERHOOD BRAILLE FUND

IN HONOR OF

SISTERHOOD
*The Sylvia Pevin & George Pevin
Foundation*

RABBI MARK MILLER
Sandy Marks

ARLENE ZIMBERG BIRTHDAY
Alan & Karen Lowen

IN MEMORY OF

LEE MARKS
Amy Bigman
Jim & Cathy Deutchman
Linda Epstein
Shirley Halprin
David & Rose Handleman
Jeff & Jennifer Hollander
Sherry Kanter
Phyllis, Jay, Sherly, and Doug Kaplan

November 1, 2025 - January 2, 2026 **TRIBUTES**

*Pandy Lan
Jacqueline & Marc Lipshaw
Alan & Karen Lowen
Suzi MacWilliams
Janet Mazzara
Joyce Meckler-Miller
Jamie Michelson Jr & Beth Michelson
Scott & Rae Monchnik
Rick & Patti Phillips
Lee Salle
Carin Goldfarb & Steve Schreier
Arthur and Lainey Steuer*

**RABBI DANIEL SYME
DISCRETIONARY FUND
IN MEMORY OF**
BERNARD PESICK
PHYLLIS POTACH
NATHAN POTACH
Morris & Reesa Potash

**TBE SENIOR STAFF MITZVAH FUND
IN HONOR OF**
SHIRA & JACOB STEINFELD
MARRIAGE
Dennis & Peggy Frank

**HELEN & PAUL ZUCKERMAN
NURSERY SCHOOL FUND
IN MEMORY OF**
LAWRENCE SCHULTZ
Harold Schultz

February | March | April **ANNIVERSARIES 2026**

FEBRUARY 1

Larry & Jackie Kraft

FEBRUARY 4

Richard & Valmy Kulbersh

FEBRUARY 5

Russell & Rebecca Lynch

FEBRUARY 6

Walter & Karen Halpern

FEBRUARY 7

Mark & Arlene Rubinstein

FEBRUARY 9

Jeremey & Nikki Dunn

FEBRUARY 11

Susan Borman &
Stuart Michaelson

FEBRUARY 13

Matthew & Amanda Salter

FEBRUARY 14

Larry & Bonnee Woodberg

FEBRUARY 17

Zinoviy & Svitlana Kelman

FEBRUARY 18

Jake & Jessica Olsman

FEBRUARY 21

David & Holly Rotter

FEBRUARY 22

Ilene & Gary Stone

FEBRUARY 23

Carolyn Rands & Douglas Parker
Angela & Scott Landers

FEBRUARY 26

Greg & Kari Mahaffey
William & Sheila Hall

MARCH 6

Dana Kreis Glencer &
Derrick Glencer

MARCH 7

Daniel & Susan Dickey

MARCH 8

Rachel Taubman-Glickfeld &
Greg Glickfeld

MARCH 10

Mark & Mania Glazer

MARCH 11

Sara & Andrew Craig

MARCH 16

Robert & Anna Greenstone

MARCH 19

Bruce Shaw & Dr. Susan Kessler

MARCH 20

Adam & Susan Rosenberg

MARCH 21

Howard & Helen Barron

MARCH 22

Ronald & Stacy Klein

MARCH 24

Henry & Wendy Abrams

MARCH 26

Jim & Cathy Deutchman

MARCH 27

Jeremy & Jessica Brandt
Richard & Jane Schwartz

MARCH 28

Jason & Lyndsay Ball
Alan & Karen Lowen
Jeffrey & Shelley Roberts

MARCH 29

Donald & Molly David
Keith Pomeroy &
Sonia Carrero-Pomeroy
Nancy & Richard Blieden

MARCH 30

Todd & Louise Sable

MARCH 31

Mary & Richard Senter
Jay & Heidi Kreindler

APRIL 1

Robert & Alexis Federman

APRIL 2

Pamela Karp & Gaal Applebaum
David & Elyse Foltyn
Jeffrey & Sue Goldsmith

APRIL 3

Ned & Joan Winkelman

APRIL 6

Chuck & Sandra Jacobowitz
Ally & Andrew Margulies

APRIL 7

Olivia & Daniel Weiner

APRIL 9

Nicole & Herb Jahr
Adam & Hannah Kessler
Harlan & Bonnie Simmons
Stephen & Diane Weisberg

APRIL 13

Stuart & Terri Litt

APRIL 14

Barry & Alicia Pearlman

APRIL 15

Eric & Melissa Spickler

APRIL 17

Adam & Jodi Becker
Doug & Wendy Hamburger

APRIL 20

Adam Berk & Karen Kushkin
Martin & Debra Darvick

APRIL 22

Dustin & Traci Feldman
David Leib & Stephanie
Schwartz
Darrin & Emily Levin

APRIL 23

Robert & Stephanie Wineman

APRIL 24

Dennis & Peggy Frank

APRIL 25

Debbie & Pierre Fuger

APRIL 27

Daniel & Jody Boorstein

APRIL 28

Jeffrey & Marci Graff

APRIL 30

Peter & Christine Glasier



February

01

9:00 AM
Brotherhood Breakfast (IP)

9:30 AM
Masa (IP)

9:45 AM
Minyan (IP)

10:30 AM
Masa Teens 7/8 (IP)
C4C Mahj Club (IP)

11:00 AM
Masa Family Cooking
Workshop 2nd Grade (IP)

11:30 AM
Masa Teens 9-12 (IP)

04

10:00 AM
Jampel Center Archives:
Navigating Series (V)

6:30 PM
Intro to Judaism (IP)

6-7

Laugh, Learn, Lounge
Young Moms Retreat (IP)

06

8:00 AM
Coffee Connections (IP)

9:15 AM
Temple Tots (IP)

5:15 PM
Superbowl Pre-Neg (IP)

6:00 PM
Music Shabbat, E for
Everyone (IP/V)

07

10:00 AM
Torah Study/Mourners
Kaddish (V)

08

9:00 AM
Brotherhood Breakfast (IP)

9:30 AM
Masa (IP)

9:45 AM
Minyan (IP)

10:00 AM
Teva Tots (IP)

10:30 AM
Masa Teens 7/8 (IP)
C4C Mahj Club (IP)

11:30 AM
Masa Teens 9-12 (IP)

NOON
BETV 35: Blanket Fort
Bonanza (IP)
BETV K2: Battle Light
Cones (IP)

6:00 PM
Brotherhood Superbowl
Party (IP)

10

7:00 PM
Chai Mitzvah (IP)

11

10:00 AM
Jampel Center Archives:
Navigating Series (V)

7:00 PM
ECC Parent Education Series:
The Fish is Floating (off-site IP)

13

6:00 PM
Shabbat Service (IP/V)

14

10:00 AM
Torah Study/Mourners
Kaddish (V)

15

9:45 AM
Virtual Minyan (V)

16
**BUILDING CLOSED-
PRESIDENT'S DAY**

17

7:00 PM
Board Meeting (IP/V)

18

10:00 AM
Jampel Center Archives:
Navigating Series (V)

19

12:30 PM
Beth Elders Senior Connection
Event (IP)

6:00 PM
Brotherhood/Sisterhood
Euchre Night (IP)

6:45 PM
Bereavement Support
Group (IP)

20

6:00 PM
Shabbat Service (IP/V)

21

9:30 AM
Yachad w/ Kiddish Lunch (IP)

6:00 PM
Brotherhood Couples Cooking
Event (IP)

22

9:00 AM
Brotherhood Breakfast (IP)

9:30 AM
Masa (IP)
Sisterhood Board Meeting (IP)

9:45 AM
Minyan (IP)

10:30 AM
Masa Teens 7/8 (IP)

11:00 AM
Masa Family Cooking
Workshop-Kindergarten (IP)

11:30 AM
Masa Teens 9-12 (IP)

26

6:00 PM
C4C: Board Game Club (IP)

6:30 PM
Baking for the Jewish Soul (IP)

27

9:15 AM
Temple Tots (IP)

5:00 PM
Purim Blowout (IP)

6:00 PM
Shabbat Service (IP/V)

28

10:00 AM
Torah Study/Mourners
Kaddish (V)

11:00 AM
Bat Mitzvah of Brielle
Silverstein (IP/V)

March

01

9:00 AM
Brotherhood Breakfast (IP)

9:30 AM
Masa (IP)

9:45 AM
Minyan (IP)

11:15 AM
Masa Purim Assembly (IP)

11:30 AM
Masa Teens 9-12 (IP)

NOON
Purim Carnival (IP)

02

6:30 PM
Adult Purim Party:
Murder Mystery (IP)

06

8:00 AM
Coffee Connections (IP)

9:15 AM
Temple Tots (IP)

6:00 PM
Shabbat Service (IP/V)

07

10:00 AM
Torah Study/Mourners
Kaddish (V)

11:30 AM
Nosh and Knowledge (IP)

08

9:00 AM
Brotherhood Breakfast (IP)

9:30 AM
Masa (IP)

9:45 AM
Minyan (IP)

10:00 AM
Teva Tots (IP)

10:30 AM
Masa Teens 7/8 (IP)

11:30 AM
Masa Teens 9-12 (IP)

10

7:00 PM
Chai Mitzvah (IP)

11

6:30 PM
Intro to Judaism (IP)

12

NOON
Bites & Books (IP/V)

13-14
JBETV Lawson Trip (IP)

13

9:15 AM
Temple Tots (IP)

5:45 PM
Congregational Shabbat
Dinner (IP)



Yahrzeits

7:00 PM

Music Shabbat, E for Everyone (IP/V)

14

10:00 AM

Torah Study/Mourners Kaddish (V)

15

9:00 AM

Brotherhood Breakfast (IP)

9:30 AM

Masa (IP)

9:45 AM

Minyan (IP)

10:30 AM

Masa Teens 7/8 (IP)

11:00 AM

Masa Family Cooking Workshop 1st Grade (IP)

11:30 AM

Masa Teens 9-12 (IP)

18

6:00 PM

Women's Seder (IP)

19

10:30 AM

Beth Elders Senior Connection Event (IP)

6:45 PM

Bereavement Support Group (IP)

7:00 PM

TBE Board Meeting (IP)

20

9:15 AM

Temple Tots (IP)

5:30 PM

Kid-ish Club Fascination Factory (IP)

7:00 PM

Shabbat Service (IP/V)

21

9:30 AM

Sisterhood Yachad w/ Kiddish Lunch (IP)

22

9:00 AM

Brotherhood Breakfast (IP)

9:30 AM

Masa (IP)

9:45 AM

Minyan (IP)

10:30 AM

Masa Teens 7/8 (IP)



Events

11:30 AM

Masa Teens 9-12 (IP)

NOON

BETY 35: Pretzel Making (IP)

BETY K2: Creation Art (IP)

27

9:15 AM

Temple Tots (IP)

5:30 PM

Passover Program (IP)

7:00 PM

Shabbat Service (IP/V)

28

10:00 AM

Torah Study/Mourners Kaddish (V)

29

9:45 AM

Minyan (V)

April

01

**BUILDING CLOSED-1:00 PM
EREV PASSOVER**

02

5:30 PM

TBE's 2nd Night Seder (IP)

03

8:00 AM

Coffee Connections (IP)

7:00 PM

Shabbat Service (IP/V)

04

10:00 AM

Torah Study/Mourners Kaddish (V)

05

9:45 AM

Minyan (V)

06

9:30 AM

ECC Parent Education Series (IP)

07

7:00 PM

Chai Mitzvah (IP)

08

**BUILDING CLOSED-
PASSOVER**

10

9:15 AM

Temple Tots (IP)

7:00 PM

Music Shabbat, E for Everyone (IP/V)

11

9:30 AM

Kid-ish Club Music & Movement (IP)

Yachad w/Kiddish Lunch, Yizkor & Plaque Dedication (IP)

5:00 PM

Bat Mitzvah of Gabi Schwartz (IP/V)

12

9:00 AM

Brotherhood Breakfast (IP)

9:30 AM

Masa (IP)

6th Grade Pointing the Way (IP)

9:45 AM

Minyan (IP)

10:30 AM

Masa Teens 7/8 (IP)

11:30 AM

Masa Teens 9-12 (IP)

NOON

4th Grade B'nai Mitzvah Kick-Off (IP)

12:30 PM

Cookbook Club (IP)

1:40 PM

Jewish Heritage Day with the Detroit Tigers (IP)

15

6:30 PM

Intro Judaism (IP)

16

6:00 PM

Brotherhood/Sisterhood Euchre Night (IP)

6:45 PM

Bereavement Support Group (IP)

17-18

Women's Retreat (IP)

17

9:15 AM

Temple Tots (IP)

7:00 PM

Shabbat Service (IP/V)

18

10:00 AM

Torah Study/Mourners Kaddish (V)

19

9:00 AM

Brotherhood Breakfast (IP)

9:30 AM

Masa (IP)

Sisterhood Board Meeting (IP)

9:45 AM

Minyan (IP)

10:00 AM

Teva Tots (IP)

10:30 AM

Masa Teens 7/8 (IP)

11:30 AM

Masa Teens 9-12 (IP)

21

7:00 PM

TBE Board Meeting (IP)

23

12:30 PM

Beth Elders Senior Connection Event (IP)

24

9:15 AM

Temple Tots (IP)

5:30 PM

Dinner for Graduates and Confirmants (IP)

7:00 PM

Graduation and Confirmation Shabbat (IP/V)

25

10:00 AM

Torah Study/Mourners Kaddish (V)

11:00 AM

Bar Mitzvah of Dylan Spillman (IP/V)

6:00 PM

Bat Mitzvah of Hallie Mauch (IP/V)

26

9:00 AM

Brotherhood Breakfast (IP)

9:30 AM

Masa (IP)

9:45 AM

Minyan (IP)

11:00 AM

Touch-a-Truck (IP)

3:00 PM

Brotherhood: DSO Neighborhood Concert (IP)

29

6:30 PM

Sisterhood: Wine & Craft (IP)



TEMPLE
BETH EL

WWW.TBEONLINE.ORG

7400 TELEGRAPH ROAD
BLOOMFIELD HILLS, MI 48301

First Class
U.S. Postage
PAID
Farmington Hills, MI
Permit No.
185

PURIM FUN AT TBE



KID-ISH CLUB PURIM BLOWOUT!

Put on your costume and join us for our epic annual Purim celebration! Featuring Purim songs, dinner, bounce houses, balloon animals, tattoos, and of course hamantaschen!

**FEB
27
5:00 PM**



OUT OF THIS WORLD PURIM CARNIVAL

11:15 AM: MEGILLAH READING

NOON – 2:00 PM: CARNIVAL

Highlights include: Kiddie Carnival, Slot Cars, Inflatable Obstacle Course, Lots of New Games and Prizes!

Tickets: \$20 Bracelet (unlimited tickets) \$10 4 & under.

**MAR
1
NOON**



MURDER IN SHUSHAN A Purim Mystery Experience (For Adults)

We Need Your Help! A murder has occurred in Shushan, and The Murder Mystery Company will lead us through an interactive Purim experience as we solve the crime together. 6:00 Cocktails. 6:30 Seated Dinner and Show \$36 TBE Members and ECC Parents / \$40 Guests

**MAR
2
6:00 PM**