



# the

## QUARTERLY

digital resources

the gift of shabbat

astrology

green team

celebrating clergy

**SPRING ISSUE**  
2024/5784

# Contents

- 5 SHABBAT IS THE MONUMENT  
Rabbi Mark Miller
- 6 MIPNEI TIKKUN HA-OLAM  
Cantor Rachel Gottlieb Kalmowitz
- 8 JUDAISM & ASTROLOGY  
Rabbi Megan Brudney
- 9 DIGITAL TECHNOLOGY  
New Digitization Station at TBE
- 10 AROUND TOWN  
Jewish Baking, Purim Blowout, Carnival and Adult Party
- 14 GROWING TOGETHER  
Early Childhood Center NEW Infant Room
- 15 2024 ECC Graduates  
Mazel Tov
- 16 CELEBRATING RABBI MILLER  
AND CANTOR RACHEL
- 19 MASA CONFIRMANDS & GRADUATES  
Congratulations to Our Teens
- 20 MEET OUR STAFF  
Susan Rice and Jennifer Ritchie
- 21 B'NAI MITZVAH  
Mazel Tov
- 22 LIFE CYCLES  
Birthdays, Anniversaries, Tributes, Yahrzeits
- 30 CALENDAR  
May, June and July 2024



## PRESIDENT MESSAGE

alicia CHANDLER  
TBE Board President

Serving term 2023-2025  
as President of Temple Beth El,  
Bloomfield Hills, MI.

### Embracing Growth and Celebrating Milestones: A Reflection on TBE's Journey

As we wrap up another school year and fiscal year, we're filled with gratitude for all the incredible achievements and growth we've witnessed as a TBE Community, Masa and TBE ECC. Our new infant room marks a significant expansion, showing our commitment to nurturing the youngest members of our community and Mazel Tov to all our Graduates! Our programming this year has been a resounding success, thanks to the dedication and hard work of our TBE staff. Every activity and event have seen tremendous enthusiasm and engagement, making this quarter particularly memorable.

Looking ahead to conclude the fiscal year, we're excited to announce our Annual Fundraiser, Fire & Ice, on Saturday, May 18th. This event promises to be the hottest in town, and we invite you to join us for a fiery soiree with your family and friends.

Following that, we invite you to our summer kickoff celebration on Friday, June 7th at 5:00 p.m. This event will kickstart our summer, devoted to honoring our beloved Cantor for 20 years of dedication to TBE and Rabbi Mark Miller for his 10 years of exemplary service. Their positivity and leadership have been instrumental in shaping our community.

Our thoughts and prayers remain with the hostages and their families. We hope for a swift and peaceful resolution. This glimpse into the amazing things we do at TBE reflects the support and strength of our community as we navigate challenges and celebrate successes together.

CLERGY  
Mark Miller, Senior Rabbi  
Megan Brudney, Associate Rabbi  
Rachel Gottlieb Kalmowitz, Cantor  
Daniel B. Syme, Rabbi Emeritus

STAFF  
Rachel Ellis, Executive Director  
Laura Gottlieb, Director of Cultural Resources  
Ken Jackson, Director of Security

Nicole Jahr, Director of Community Engagement  
Damon Kaigler, Director of Facilities  
Jamie Lefkowitz, ECC Assistant Director  
Deborah Morosohk, RJE, Director of Education  
Frank Reinstein, Chief Financial Officer  
Melanie Weber, Director of Communications

Susie Weiner, Director of Early Childhood Center

BOARD OFFICERS  
Alicia Chandler, President  
Kristen Gross, Vice President  
Ray Henney, Vice President  
Claude Reitelman, Vice President  
Steve Tarnowsky, Vice President  
Sarah Lyngaas, Treasurer  
Cindy Hecht, Secretary

Rochelle Nelson, Immediate Past President

AFFILIATES  
Beth Elders - Elaine Brockman Brotherhood - Lenny Beigler Sisterhood -  
Joanne Lax, Carol Plisner, Elaine Schonberger, Cathy Segel  
Kid-ish Club - Alissa VanderKooi

DESIGN, LAYOUT & PRODUCTION: In-house. Creative Leaders. Concept through Completion.  
Publisher: Rachel Grey Ellis. Communications Director: Melanie Weber. Senior Graphic Designer: Marie Curtis

The TBE Quarterly is printed in-house at TBE using true end-to-end production on RICOH USA, Inc. Pro C5310s sheetfed digital presses. We use sustainable and environmentally friendly materials. INK: plant-based soybean. PAPER: Xerox Bold Digital 28lb. opaque acid free, SFI Certified.



For program details, scan the QR code or visit us at [tbeonline.org](http://tbeonline.org). For assistance call 248-851-1100.

SPRING 2024: Temple Beth El, Bloomfield Hills, MI  
TBE Quarterly is published four times per year.



Join us for **THE HOTTEST EVENT** in town  
Temple Beth El's Annual Fundraiser

# FIRE & ICE

**SATURDAY, MAY 18**  
**7:00 PM**  
**TEMPLE BETH EL**

SPONSORED BY THE ALEXANDAR DAVID  
BURNSTEIN MEMORIAL FUND



**SIPPIN' SENSATIONS (OPEN BAR)**

**SIZZLING FOOD STATIONS:**  
Backyard Habachi • Cookieee Boys  
Kabar Sushi • Platinum Dish Catering  
Smokey G's BBQ • That's That Pizza

**BLAZING PERFORMANCES**

- Fire Dancers
- Music by Feisty Birds
- Ice Craving

**\$136**  
PER PERSON

**GENERAL TICKET PRICING**

**\$75**  
PER PERSON

**ECC & MASA PARENTS**  
(Limit 2 per family)

**RAFFLE**

**ROARING RAFFLE PACKAGES\***

Get your tickets now, for a chance to win!

**NEED NOT BE PRESENT TO WIN**

**SMOKIN' HOT VIP SPORTS**

- Pistons Jalen Duren Jersey
- Hall of Famer Goose Gossage Bat
- Bally Sports Package
- Tigers Tickets • U of M Tickets



Scan the QR code or visit [tbeonline.org](http://tbeonline.org) for tickets or to become a sponsor.

**DAZZLE & SPARKLE**  
• \$1500 Gift Card Tappers Jewelry

**FLAMES & FROST**  
Moulin Rouge Tickets • Godfrey Hotel Stay • Rivage Day Spa Facial  
• Mongers' Provisions Gift Card  
• Heirloom Hospitality Gift Card

“

Six days you shall labor and do all your work, but the seventh day is a sabbath of the Eternal your God.

-Exodus  
20:9-10



SHABBAT COVERING JERUSALEM  
ORIGINAL JEWISH ARTWORK  
BY ALEX LEVIN

# SHABBAT is the Monument

rabbi mark MILLER

We may not always think of it this way, but Shabbat is one of the greatest gifts that our Jewish heritage has given to the world. We take it for granted that in order to be our best selves, people need time to rest, recuperate, revitalize, renew. But it wasn't always that way. For much of human history, people didn't have the "luxury" of down time. Even as it has been a unique element of our religious character, the broader concept of Shabbat was a cultural revolution that spread far beyond its roots in our small corner of the ancient world.

Shabbat continues to play a central role in living a Jewish life, and we take great pride in offering a meaningful experience at Temple week after week. Of course, Shabbat in our Jewish community is far from what it was thousands, or even hundreds, of years ago. For many decades now, our Reform Movement has undergone a shift in how people choose to observe the day of rest. For example, rather than focusing on Saturday morning, more and more people have chosen to focus on Friday night as their primary Shabbat experience.

In the Conservative Movement, Saturday mornings are still the main time people show up at their synagogue, while Friday nights are more sparsely attended. I don't have a strong opinion about whether Friday night vs Saturday morning is good or bad – my personal goal is for our community to take advantage of Shabbat in whatever way is most impactful.

Toward that end, we strive to continually evaluate and improve the Shabbat experience at TBE. By the time you receive this Quarterly, we will have just celebrated our first new Shabbat initiative ... "Yachad: Saturday mornings at TBE!" After talking with many Temple members over the past year – including members of our Board, people in our weekly Torah study, and our newly reinvigorated Ritual & Worship Committee (chaired by Stefani Goerlich), we created Yachad as a chance for you to come to Temple on an occasional Shabbat morning for a beautiful, musical, spiritual service; to enjoy a traditional Torah reading; to engage in a little Torah study about that week's portion; and to spend some time among friends (new or old) at a nice Kiddush luncheon.

Even if Shabbat services haven't been a primary part of your own Jewish observance, I hope you will give Yachad a try – I am confident that it will add something special to your week.

And one more thing to announce – in another attempt to make Shabbat more accessible for more people, we are changing the time of Friday evening services over the summer. As you know, we hold an outdoor **Summer Shabbat service during June, July, and August ... and this year, the service will begin at 6:00 p.m.** (rather than 7:00). We know, of course, that no time is perfect for everyone – but we hope this time will allow you to join us, and then take advantage of the rest of the evening.

As Rabbi Abraham Joshua Heschel famously said, Shabbat is the "monument" our people has built for thousands of years. I look forward to seeing you on a Friday night or Saturday morning soon, as we continue to build a thriving future at Temple Beth El.

# Mipnei tikkun ha-olam!

rachel GOTTlieb KALMOWITZ  
Cantor

I own a t-shirt, purchased in honor of my St. Patrick's Day birthday, that says "Green is Sexy." It's not one I wear around temple, as it feels inappropriate, but I think perhaps it's time to embrace this sentiment.

Being focused on our environmental footprint, on the damage we humans are inflicting on the earth, or, alternately, the work we do to repair or slow down that damage is important, holy, and yes, even sexy. We need to use whatever buzzwords we can to get people excited about taking part in this effort.

With this in mind, Nicole Jahr and I are revitalizing our **Green Team**, which includes Leslie Landau, Sam Liveson, Ryan MacWilliams, David Richardson, Ari and Michael Sklar, Steve Tarnowsky, and Jo-Ann MacWilliams Wolf. We have received a grant from Adamah Detroit, which will be used toward our first few initiatives.

I am so excited to share that due to the diligent efforts of our building supervisor, Damon Kaigler, we have installed a water filling station near our coffee station in the Slotkin Foyer. This has the capacity to save countless plastic water bottles, but only IF we use it. Please remember to bring a refillable bottle with you when you come to temple for an event, meeting, or class, and fill it up!

The *TBE Quarterly* is printed in-house at TBE using sustainable and environmentally friendly materials. INK: plant-based soybean. PAPER: Xerox Bold Digital 28lb. opaque acid free, SFI Certified.



JACKIE TAHARA

## OUR TBE GREEN TEAM ENERGY SUBCOMMITTEE, LED BY DAVE RICHARDSON, WRITES:

We are working with Executive Director Rachel Ellis and the TBE Facilities Team to review our electric and gas bills for possible renewable sourcing of energy for the Temple. Some preliminary work will be done to review rebate checks and low-interest loans currently available for energy improvements or updates to the existing building systems. We will also look at some examples of Energy Audits conducted by other Temples or non-profits for possible next steps.

## OUR RECYCLING SUBCOMMITTEE, LED BY RYAN MACWILLIAMS, HAS THE FOLLOWING UPDATE

Did you know that TBE recycles? We do! Throughout the spring and summer, the Green Team will be collaborating with the Facilities Team to review and improve TBE's recycling practices. The Green Team's goal is to reduce TBE's annual landfill waste contributions by:

- Increasing access to recycling bins throughout the building
- Improving recycling signage to increase recycling awareness, and
- Adopting a single stream recycling protocol which will increase the kinds of products that can be recycled at TBE

Recycling provides many benefits to our environment. By recycling more waste, we create a healthier planet for ourselves and future generations!

## LET'S LEARN SOME BENEFITS OF RECYCLING

The **TBE Green Team** is energized and excited to keep you updated on our progress this year, along with sharing information that can help each of us contribute to the healthier planet of tomorrow. If you have any questions, please contact Cantor Rachel at [rgk@tbeonline.org](mailto:rgk@tbeonline.org). Mipnei tikkun ha-olam! (for the sake of the betterment of the world!)

With hope for the future of our planet,

*Cantor Rachel*

- Recycling reduces the need to extract resources such as timber, water, and minerals for new products.
- Recycling combats climate change. According to the most recent EPA data, the recycling and composting of municipal solid waste (MSW or trash) saved over 193 million metric tons of carbon dioxide equivalent in 2018.
- Recycling conserves energy. For example, even recycling 10 plastic bottles saves enough energy to power a laptop for more than 25 hours. To estimate how much energy you can save by recycling certain products, the EPA developed the individual Waste Reduction Model (iWARM).
- Recycling diverts waste away from landfills and incinerators, which reduces the harmful effects of pollution and emissions.

Learning with Rabbi Brudney

# JUDAISM & ASTROLOGY

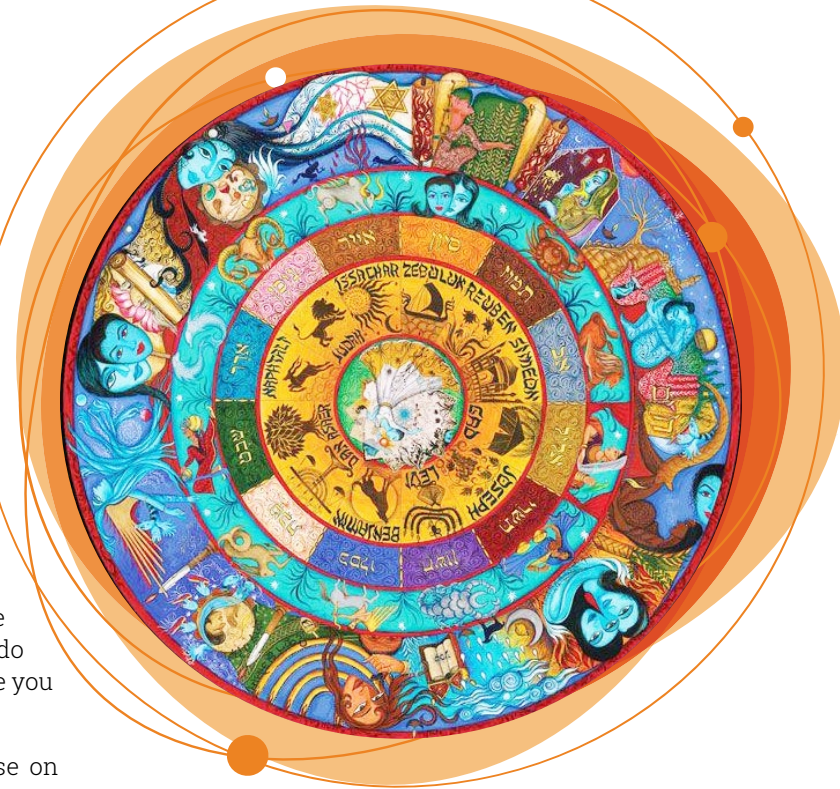
**Judaism is incompatible with astrology... right??!**

With days getting longer and my calendar filled with upcoming TBE events and programs, I can confidently say: The stars are aligning for a great spring here at Temple! But wait—that phrase might not have sounded quite “Jewish” to you. Don’t we believe that God has more to do with it than faraway heavenly bodies? It might surprise you to learn that it’s actually not that clear.

This past winter I taught a three-session mini-course on Judaism and Astrology—and I wanted to share with you a brief text we learned together (found in Babylonian Talmud Shabbat 156a):

Astrologers told Rabbi Akiva that on the day of his daughter’s wedding, a snake would bite her and she would die. She was very worried by their prediction. At the end of her wedding day, she took out her hair pin and stuck it into a hole in the wall for safekeeping—where it happened to enter directly into the eye of the snake. In the morning, when she pulled the pin out of the wall, she pulled the (dead) snake right out with it. Rabbi Akiva said to her: What did you do to merit being saved from the snake? She told him: In the evening a poor person came and knocked on the door—but everyone was busy with the wedding feast so nobody heard him. I stood and took the food that you had given me and gave it to him. Rabbi Akiva said to her: You performed a mitzvah.

There is so much in this text! First, the astrologer gives Rabbi Akiva a (seemingly unsolicited?) reading. There are many ways he could have reacted—for instance with suspicion or derision. Although Rabbi Akiva’s own response is not captured, his daughter, the subject of the reading, chooses to take it seriously. Then, on the wedding night itself, the astrologer is proven nearly correct as a snake does indeed appear in striking distance of the daughter. However, it seems that by chance and



without even being aware of it she was able to fend it off. When the morning comes, however, Rabbi Akiva’s rabbinic worldview comes into sharp focus as he investigates the situation. It is perfectly clear to him that his daughter only survived (and the astrologer was only wrong) because his daughter had done a mitzvah, allowing her to escape the fate the astrologer foretold. Thank goodness she heard the knock on the door and was kind enough to give her food to the caller! Note that the astrologer is never impugned in any way. In fact, his reading is given a great deal of credence, and it seems that it was fully expected to come to pass were it not for Rabbi Akiva and his daughter having a (the) Higher Power on their side.

I just love this story. We learn from Rabbi Akiva, his daughter, and the astrologer that there are real forces larger than us operating in our world—forces for good, forces for evil, forces that only some people can perceive. And yet, we have the most powerful force of them all: the free will to do mitzvot. We walk around with the unlimited ability to make the world a better place at any given moment. We can choose to give of what we have and treat a person with dignity anytime, from the most mundane of days all the way up to our wedding nights. It’s only when we harness that power and see ourselves as agents of powerful good that the stars will truly align for us.

laura GOTTLIEB  
TBE Director of Cultural Resources

robbie TERMAN  
Director of the Leonard N. Simons Archives

## DIGITAL TECHNOLOGY

**TIME TO UNLOCK THOSE 50+ YEAR OLD MEMORIES!** The Joan Meyers Jampel Center for Michigan Jewish Heritage is home to a Community Digitization Station, available to you!

Do you have boxes of 8mm and Super 8 films hanging around the house? What about old vinyl records and slides? Maybe an unorganized box of photographs in chaos? Unsure how in the world to view them or if your grandkids would even know what they are? You are not alone! But they don’t need to stay tucked away - we have an option to help you view, digitize, and save them for future generations! We have already had users come in to digitize family scrapbooks, photo albums, DVDs, and even those old-school 8mm films!

**This dream-come-true does have some rules and regulations, and here are a few things we want you to know:**

- The Community Digitization Station (CDS) is available to community members free of charge.
- The CDS is available by appointment or on designated “Community Digitization Days.”
- Use is limited to family and personal papers, including photographs, negatives, 8mm/Super8 film, slides, correspondence, genealogy documents, and other related documents. We do not allow use for financial, medical, or any items with security issues. Additionally, we do not allow copyrighted items, such as books, to be digitized.
- All users must agree to share the digital images/copyright with the Joan Meyers Jampel Center for Michigan Jewish Heritage (CMJH) if it is deemed the materials fit within the scope of their collections. Don’t worry though - you keep the originals unless you decide one day to have a discussion about donating to the archives!

Visit [MiJewishHeritage.org](http://MiJewishHeritage.org) and click “Community Digitization Station.” To make an appointment or for questions, email Laura Gottlieb at [lgottlieb@theonline.org](mailto:lgottlieb@theonline.org) or call 248-851-1100.



JOAN MEYERS JAMPEL  
CENTER FOR  
MICHIGAN  
JEWISH  
HERITAGE





# around temple **KID-ISH CLUB PURIM BLOWOUT**



around temple  
**ADULT PURIM PARTY**



around temple  
**PURIM CARNIVAL**



# GROWING TOGETHER

susie WEINER  
Early Childhood Director

Welcome to the enchanting world of Temple Beth El's Early Childhood Center, where our newest addition, the infant room, has sparked a wave of excitement and joy!

Over the past eight years, we have fielded countless inquiries about an infant room to support our working parents. Finally, in the Fall of 2023, we proudly announced, "Yes, we have one!"

From our modest start with six delightful infants attending on different days, we have grown into a lively group of ten little ones who join us Monday through Friday. It's incredibly heartening to witness families begin their journey with us as early as three months old and observe their development until they transition to our interactive toddler room at 18 months old and beyond.

What makes our infant room so special, you ask? Well, let's talk about our favorite things! Firstly, we have our adorable Board Room Meetings held at a unique pint-sized table (you've got to see it to know how truly adorable it is!). And then there's our beloved 4-person stroller, a sight to behold as it merrily strolls around our grounds and even makes a grand entrance down the chapel's center aisle during Shabbat song sessions.

Our aim is to seamlessly integrate each child into our nurturing environment, fostering a sense of belonging and community from the very start. Here, every infant is welcomed with open arms, encouraged to explore, learn, and grow while experiencing the warmth and togetherness that define our Temple Beth El ECC family.

At TBE's ECC, every moment with our learners is infused with love, laughter, and valuable education.

Just try NOT to smile while glancing at these gorgeous pictures.



## Maazel Tov to our 2024 ECC Graduates!

Noa Ben Ezra  
Quinn Benhamou  
Julian Berk  
Nellie Cohen  
Eli Craig

Evan Dizik  
Anthony Fink  
Hudson George  
Elliott Gordon  
Alexander Green

Emma Herc  
Winnie Jacobs  
Eden Kramer  
Eliana Krefman  
Piper Lutz

Marlow Mueller  
Mason Ossipove  
Haze Schwartz  
Oliver Wadsworth  
Caleb Wagner

Faye Warsh  
Alec Weisman  
Dylan Werbling  
Luka Wildern  
Connor Yellen



# SACRED MOMENTS IN TIME AT TEMPLE BETH EL

## Rabbi Brudney honors Rabbi Miller and Cantor Rachel



CELEBRATING  
20 YEARS  
ANNIVERSARY

### A VOICE THAT Inspires Our Souls

CANTOR RACHEL GOTTLIEB KALMOWITZ



It is truly my honor to serve Temple Beth El alongside Rabbi Mark Miller. I came here fresh out of rabbinic school in search of a mentor to guide me from being \*technically\* a rabbi to being the rabbi of an actual community. From a serendipitous moment during my interview weekend until the present day, I am so thankful for Rabbi Miller's partnership and support as we work together to sustain this congregation. Rabbi Miller is a decisive leader in good times and bad and I am in awe of his ability to spring into action in times of crisis. I have often joked that whatever game you are playing, you want him on your team! And not just when things are easy—Rabbi Miller has a special talent for giving honest, constructive criticism in a way that nonetheless makes me leave his office feeling ready and even excited to take on this new challenge. Most of all, I have never doubted for even one second that Rabbi Miller values and cares about me both as a person and as a professional. I have learned and grown so much under his guidance. Mazal tov to my trusted colleague on 10 years at TBE!

When I first visited Temple and heard Cantor Rachel Gottlieb Kalmowitz's magnificent voice, I was duly impressed as well as...worried. How in the world would I be able to sing alongside her on the bimah? Would she even want us to sing together? I was so thrilled and relieved to discover that the answer was a resounding "yes." Cantor has always encouraged my musical participation and we have shared some of our most special moments of connection while singing duets. In my own times of pain, I have joined many of you in crying while listening to her voice bringing the words of our tradition to life. Beyond the musical realm, Cantor is a skilled clergy person fully capable of teaching, officiating life cycle events, giving sermons, and more. I've particularly enjoyed working with her in creating cohesive programming and services with a strong and coherent arc. She is a talented editor and writer whose attention to detail is surpassed by none. Cantor also offers essential institutional memory thanks to her twenty years serving this community. Thank you, Cantor, for leading our Temple with your voice, mind, and spirit.



CELEBRATING  
10 YEARS  
ANNIVERSARY

### A HAND THAT Leads Our Congregation

SENIOR RABBI MARK MILLER



You too can honor Cantor and Rabbi Miller by sending a brief personal celebratory message or upload a favorite photo; all your messages and photos will be shared with them as part of the celebration.

SCAN THE QR CODE to upload your message.

## Summer Kickoff Music Shabbat celebrating Cantor Rachel and Rabbi Miller!

FRIDAY, JUNE 7

5:00 PM BBQ Dinner and Kid-ish Club

6:00 PM (new time) Celebration and Music Shabbat

Let's come together as a community to celebrate these milestones, sharing laughter, stories, and gratitude for all that Cantor Rachel and Rabbi Mark have contributed to Temple Beth El and our lives. Our Summer Kickoff promises to be a joyous occasion filled with love, appreciation, delicious food, and cherished memories, and the warmth of our shared Shabbat traditions.

# Investing in Our Teens

Keeping our teens engaged in Jewish life after bar/bat mitzvah and through their high school years is a high priority here at TBE.

debbie MOROSOHK  
Director of Education

When our teens stay involved at temple, they learn more about Judaism and Jewish living at both a higher and deeper level, develop meaningful relationships with temple friends, and are more likely to stay engaged in Jewish living as they go out into the world. Because those teen years are so vital to the development of a young person, we highly value, and devote a lot of thought and effort to teen engagement.

Recently, the Ruth Franklin Einstein Fund (RFE) decided to make teen Jewish engagement their mission. Ruth Franklin Einstein was the daughter of Rabbi Leo M. Franklin, Senior Rabbi of Temple Beth El from 1899 – 1941. The Temple fund that bears her name is dedicated to the education of young adults and was originally set up to provide loans to help young people pursue a college education. But as that purpose was picked up by other community resources in the last decade, the RFE committee searched for a new mission.

The RFE committee, chaired by Dennis Frank, chose to support the continuing Jewish education of teens at Temple Beth El. With the growing trend of students ending their Jewish education after their bar/bat mitzvah, the committee wanted to provide an incentive for students to continue their Jewish learning through their teen years. Five years ago, the RFE committee established a stipend of \$2500 to be given to all graduating seniors.

That stipend, along with other program features, is intended to encourage continuing Jewish engagement for our teens. Other program features include moving Masa Teens to Sundays, incorporating trips and other informal experiences into the program, including the opportunity to work as madrichim with the younger children, and offering a high-quality program that engages our students.

At a recent meeting, the committee reviewed the program and decided to continue offering stipends with a few adjustments. They wanted to make their impact felt sooner and reward students at both Confirmation (10th Grade) and Graduation (12th Grade). Going forward, the RFE benefit will be raised to \$3000 with \$1500 to be awarded at Confirmation and \$1500 to be awarded at Graduation.

Thank you to the dedicated RFE Committee for being our partner in encouraging and rewarding teen engagement at Temple Beth El. Because of their commitment to our program, our teens know that we are investing in them, and that their involvement will be rewarded in a wide variety of ways.

## MAZEL TOV to our ... MASA CONFIRMANDS CLASS 2024/5784

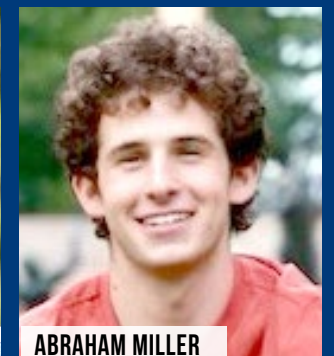
PAYTON RENUSCH  
SYDNEY ROSENBERG  
BRYCE TOBY



## MAZEL TOV to our ... MASA GRADUATING CLASS 2024/5784



MATTHEW GURWIN



ABRAHAM MILLER



RYAN HAROLD



LUKE STIBOR

Temple Beth El held our graduation ceremony on Friday, April 26th. We celebrated four extraordinary young men who have completed our Masa program and are ready to move on to next steps in their life and Jewish journeys.

### MATTHEW GURWIN

Graduating from Walled Lake Northern High School

**Favorite TBE Memory:** Celebrating my Bar Mitzvah. It was one of my biggest accomplishments and one of my proudest memories in my Jewish Journey.

### RYAN HAROLD

Graduating from the International Academy

**Favorite TBE Memory:** Working at the Purim Carnival because I love working at the games and giving kids extra tickets.

### ABRAHAM MILLER

Graduating from Seaholm High School

**Favorite TBE Memory:** I've enjoyed going to Music Shabbats since we moved here and listening to all the great musicians and then enjoying some oneg afterward.

### LUKE STIBOR

Graduating from The Roeper School

**Favorite TBE Memory:** My favorite Temple Beth El memory was my Bar Mitzvah ceremony and practicing for it with Alan Lowen.

# Meet SUSAN and JENNIFER



**SUSAN RICE** Assistant to Cantor Rachel Gottlieb Kalmowitz  
Susan hales from Ohio, but moved to Michigan 36 years ago when the automotive industry transferred her husband to the Detroit area. Having worked in Finance at "The" Ohio State University Hospitals, she (to the dismay of many in this area) is an avid Buckeye fan. She does love Michigan though and is proud, and amazed, to have spent thirty years at Temple Beth El, now happily counting Cantor Rachel as her fourth Cantor. She enjoys managing the day to day responsibilities under the Cantor's umbrella, including the B'nai Mitzvah process and music programming. Interacting with her temple teammates and the congregants is a heartfelt pleasure. When not at work, Susan has a great time playing golf and bridge, gardening, reading, and spending time laughing with family and friends.



**JENNIFER RITCHIE** Executive Administrative Assistant to the Rabbis  
Hello Everyone, I'm Jennifer Ritchie, and I'm the Executive Assistant to the Rabbis. Scheduling, emails, correspondence, help with events, and preparing materials for Shabbat, are just a few of the tasks I complete here at Temple Beth El. I assist with anything the Rabbis need, which covers a wide range of items! I have a Bachelor of Science Degree in Elementary Education. I've taught around the Metro Area, Detroit, and in Nashville, TN. I lived there a couple years, and country music is my favorite. I've seen many concerts in several states, and a couple other countries. I enjoy making friends in lots of places. I'd like to think I've made a lot of connections here at TBE; it's a good place to be.

## TEAM TBE DIRECTORY

Main Number: 248-851-1100

### ADMINISTRATION

- RACHEL ELLIS, *Executive Director*  
x 3140 248-865-0636
- MELANIE WEBER, *Director of Communications*  
x 3146 248-865-0626
- MARIE CURTIS, *Senior Graphic Designer*  
x 3169 248-325-9706
- EVANGELA WHITEHORN-DOVE,  
*Executive Director Assistant/Event Coordinator*  
x 3121 248-865-0624
- NICOLE JAHR, *Director of Community Engagement*  
x 3153 248-865-0623

### ARCHIVES / LIBRARY

- LAURA GOTTLIEB, *Director of Cultural Resources*  
x 3137 248-865-0627
- ROBBIE TERMAN, *Director Leonard N. Simons Jewish Community Archives, Jewish Federation of Metropolitan Detroit*  
x 3201 248-865-0629

### SISTERHOOD OF TEMPLE BETH EL BRAILLE BINDERY

- Volunteers x 3129 248-865-0634

### CANTOR'S STUDY

- CANTOR RACHEL KALMOWITZ, *Cantor*  
x 3152 248-865-0619
- SUSAN RICE, *Assistant to the Cantor*  
x 3150 248-865-0605

### CEMETERY

- Steven Shukwit 313-653-9361  
Beth El Memorial Park 734-421-5680

### EDUCATION / MASA

- DEBBIE MOROSOHK, *Education Director*  
x 3168 248-325-9708
- ILENE STONE, *Education Center Administrator*  
x 3126 248-865-0612
- SAM SMETANIN, *Youth Director*  
x 3205 248-703-4832

### EARLY CHILDHOOD CENTER

- SUSIE WEINER, *Director of Early Childhood Center*  
x 3133 248-325-9702
- JAMIE LEFKOWITZ, *Assistant Director/Camp Director*  
x 3163 248-325-9710
- JEN GOREN, *Administrative Assistant*  
x 3156 248-865-0611

### FINANCE DEPARTMENT

- FRANK REINSTEIN, *Chief Financial Officer*  
x 3145 248-865-0617
- AMY SILARDI, *Senior Accountant*  
x 3134 248-865-0616

### MAINTENANCE DEPARTMENT

- DAMON KAIGLER, *Director of Facilities*  
x 3158 248-865-0607
- VICTOR AGUILAR, JAJUAN JONES,  
XAVIER DAVIS x 3136 248-851-1100

### RABBIS' STUDY

- RABBI MARK MILLER, *Senior Rabbi*  
x 3165 248-325-9705
- RABBI MEGAN BRUDNEY, *Associate Rabbi*  
x 3143 248-865-0603
- JENNIFER RITCHIE, *Executive Administrative Assistant to the Rabbis*  
x 3142 248-865-0602

### SECURITY

- KEN JACKSON, *Director of Security*
- NORMAN BIAS, CHUCK HARTHUM,  
KEN WRIGHT x 3220 248-851-1100

# Mazel Tov B'NAI MITZVAH



CHARLIE FELDMAN

## Bar Mitzvah of CHARLIE DYLAN FELDMAN May 4, 2024

**Charlie**, son of Traci and Dustin Feldman, will be called to the Torah as a Bar Mitzvah at Temple Beth El in Bloomfield Hills on May 4th, 2024. Charlie is the grandson of Lesley and Barry Feldman, Phyllis Botwinick and the late Robert Botwinick. He is a student at Derby Middle School in Birmingham. Charlie's most meaningful Mitzvah project is collecting gently used sports equipment with the organization Brilliant Detroit. Through Charlie's contributions, Brilliant Detroit will be able to run summer camps this summer as well as support their health and movement initiative.



WHITNEY WELBOURNE

## Bat Mitzvah of WHITNEY WELBOURNE May 11, 2024

Whitney, daughter of Carlee and Neal Welbourne will be called to the Torah as a Bat Mitzvah at Temple Beth El in Bloomfield Hills on May 11, 2024. Whitney is the granddaughter of Susan and Patrick Welbourne, Larry Ashman and the late Maureen Ashman. She is a student at Berkshire Middle School in Beverly Hills. Whitney is a competitive swimmer and avid volleyball player. She loves to be creative through art and enjoys spending time with her friends and family.



EVE LEWIS

## Bat Mitzvah of EVE LEWIS May 25, 2024

Eve, daughter of Erin and Aaron Lewis, big sister to Roen, will be called to the Torah as a Bat Mitzvah at Temple Beth El in Bloomfield Hills on Saturday, May 25, 2024. Eve attends Derby Middle School in Birmingham. She has a passion for the Visual Arts and socializing. Eve's mitzvah project will support the Dignity Grows Organization, which provides essential supplies for females in need.



SPENCER LEVIN

## Bar Mitzvah of SPENCER LEVIN June 1, 2024

Spencer (Boaz) will be called to the Torah as a Bar Mitzvah on Saturday, June 1, 2024 at Temple Beth El in Bloomfield Hills. He will be joined in celebration by his proud parents, Emily and Darrin Levin, sister Lindsay and brother Dylan. He is the grandson of Adrienne and Paul Shwedel, Carole Levin and the late Larry Levin. Spencer is a 7th grader at Derby Middle School in Birmingham. Spencer enjoyed doing his mitzvah project with his friend, Charlie Feldman, as they partnered with Brilliant Detroit, collecting sports equipment to donate to kids in communities in Detroit. Spencer hopes to continue working with Brilliant Detroit and is proud to be helping those in need.



NOAH SORSER

## Bar Mitzvah of NOAH SORSER June 22, 2024

Noah is an enthusiastic student at Detroit Country Day Middle School, where he will soon complete the 7th grade. He enjoys playing flag football, running cross country, and is an avid Lions and Wolverines fan. He also does jiu-jitsu, participates in math competitions, and loves reading, playing chess, and solving Rubik's cubes. Summers at Tamarack Camp are his favorite. For his Mitzvah project, Noah volunteered at Yad Ezra Food Bank and Coville Assisted Living Facility in Oak Park. Noah is the son of Dina and Serge Sorser, older brother of Hanna, and grandson of Helen and Alex Sorser and Nina and Mark Shkolnik.

**APRIL 28 – MAY 4**

William Abramson  
Rose Agree  
Gertrude H. Ashner  
Irving August  
Samuel Babcock  
Robert Benyas  
Celia Bigelman  
Cecelia Grossman Bittker  
Morris Bletstein  
Sandra T. Bloom  
Doris Broder  
Henry Burston  
David Clamage  
Robert G. Cohen  
Bessie G. Cohen  
S. Leonard Cohn  
Sidney A. Deitch  
Rebecca Eve Dickstein  
Ray H. Einstein  
Tauba Feldman  
Cecilia Esther Frank  
Abraham H. Goldberg  
Celia Barnett Goldfarb  
Marvin H. Goldman  
Irwin J. Gottlieb  
Jonathan Gourwitz  
Isidore Grabow  
Lillian Haber  
Lois Hamburger  
Joseph Hartman  
James Anthony Hauser  
Virginia Heller  
Joanne Helper  
Howard N. Jacobson  
Rhoda Jonas  
Norman R. Kaplan  
Saul Katz  
Paul Katzman  
Bernard Kaufman  
Richard Kaye  
Diane Kemper  
Frieda S. Leemon  
Gerald Levin  
Tillie Sidlow Lindenbaum  
Milton Marks  
Ruth Mazur  
Donald R. Mcmillan  
Jerome F. Miller  
Joseph Nederlander  
Hugo Parshall  
Anna Reva Prepsky  
Rose Godfine Rader  
Simon Rosen  
Flora L. Safr  
Bert Howard Schlain  
Sara Edith Segal  
Etta Shapero  
Eugene Siegel  
Ann Simon  
Max Slatkin  
Brenda Small  
Herman Uday  
Eleanor Siegel Walker  
Seymour Weitzman  
Cecil R. Welford  
Ida Winnick  
Esther Zelens  
Milton Zinberg  
Reva Zitomer  
Julius Jay Zuckerman

**MAY 5-11**

George Abramsohn  
Bruce Baker  
Lynne Barr  
Morris Beider  
Anne Belkin  
Julius Bing

John Imerman Bloom  
Sol Brenner  
David Brody  
Irving Chaprack  
Ida Chattman  
Celia Cohen  
Shirlee Cole  
Sophie Collins  
Hedwig Coskey  
Johanna Cramer  
Rebecca Redblatt Dinetz  
Frieda R. Feisenberger  
Zoie R. Fish  
Goldye G. Franklin  
Lou Freedman  
Alexander Z. Freeman  
Martin Fried  
William H. Gard  
Mollie Simon Gerson  
Marcus Ginn  
Sidney Glaser  
Daniel Goodman  
Aaron Gottlieb  
William Greenberg  
Charles I. Greenberg  
Tenny S. Greenberg  
Robert Gurwin  
Barbara Handel  
Suzanne S. Hopp  
Norman Jacob  
Marian Kovins Birnkrant  
Jacobs  
Max M. Kallin  
Rebecca Sloan Kallin  
Rose Kazdan  
Melvin Kevin  
Fannie Adelson Koblin  
Ida Kovinsky  
Jane Lawson  
Geraldine Lester  
Lawrence I. Levi  
Jacob Lindenbaum  
Jack Maltz  
Rosalie Mayer Mansell  
Audrey Morris  
Miriam Macwilliams  
Moxon  
Harry Must  
Stuart Nagel  
Samuel Prince  
Sol Rice  
Joyce Rose  
Kathy Ann Rose  
Cecil Sylvia Rosenberg  
Tillye Bach Rosenfeld  
Sam Rosenfeld  
Roy I. Rosenthal  
Evelyn Schubot  
Judith Schumann  
David Segal  
Jerome Shapero  
James Shapiro  
Yetta Babbin Shumer  
Abe Silberstein  
Norman Sky  
Dan Harold Sofer  
Margaret Sofferin  
Mark L. Solomon  
Annette Spoon  
Paul Talberg  
Berthold Triest  
Ly Triest  
Arthur Van Victor  
Leonard Weiner  
Ben Weintraub  
David Wilkus  
James H. Wineman

**MAY 12-18**

Charles Ackerman  
Sadie Alpert  
Emanuel M. Baker  
Eleanor Benkoff  
Josef Berkovic  
Edward Bice  
Ruth Bloch  
Rose Bogrow  
Marion A. Breskin  
Joseph H. Cantor  
Alan Paul Canvasser  
Babette Cohen  
Max A. Craine  
Nena Dillick  
Dorothy Eichorn  
Nancy Lesser Eisner  
Milton J. Elson  
Elsie Epstein  
Steven Fenkell  
Jeanette Stewart Fink  
Lilly H. Frankel  
Henry Frehsee  
Reuben Friedman  
Dorothy Gerson  
John J. Ginn  
Rabbi B. Benedict Glazer  
Lenard Goran  
Geraldine J. Granet  
Ronald L. Greenberg  
James Jerome Hall  
James Helfer  
Charles Helman  
Abram J. Hertz  
Hermine Hirsch  
Leo Hollander  
Eileen Holzman  
Bobby Jacob  
Naomi Kabakov  
Edith Ketchel  
Golda Krolik  
Nathan Lavene  
Manfred Lehman  
Benjamin Lipton  
Ben Lutz  
Annette Lutz  
Benard L. Maas  
Barbara Marcuse  
Phyllis Wertheimer Marks  
Fred Maysels  
Joan Loewenstein  
Millstone  
Harold Nelson  
Harold Nosan  
Max Operman  
Andrea Page  
Samuel Penchansky  
Bernard E. Pincus  
Edith Platt  
Jacob H. Polozker  
Rose Proffitt  
David Redisch  
Morris Rogoff  
Jay Rosen  
Henry Rosin  
Robert Ross  
Jacob Richard Sandy  
Margot Scharfenberg  
Richard M. Schubot  
Kent Howard Seedman  
Joan Seitner  
Geraldine Sills  
Harold Simon  
William C. Sloman  
Sadie Small  
Frank Smith  
Joyce Phyllis Spitzer  
Brian Lee Stapleton  
Janet Stein

Roy Steinbock  
Louis B. Stern  
Irene Stern  
Sidney Stone  
Rose Toll  
Stephen Tower  
Polly Dehaan Van Baalen  
Barbara Weisberg  
Margaret Winkelman  
Fanny Winkelman  
Irving J. Wolfgang

**MAY 19-25**

Joseph Wolfe Allen  
Harold C. Allen  
Gilbert Barton  
Charles Buddy Benjamin  
Norman L. Besbris  
Evelyn Biederman  
Howard A. Bloom  
Abraham J. Bloomgarden  
Robert Botwinick  
Alvin Buch  
Patrick Burkett  
Sylvia Burtrum  
Fred M. Butzel  
Shirlee Caplan-Clayton  
Edward Chandler  
Riley Danielle Church  
Selma Clamage  
Phyllis Cohen  
Rose Adler Colman  
Herbert Cyrlin  
Joseph Decker  
Margaret Herz Demant  
Sam Dreyfoos  
Alfred Dube  
Ed I. Edwards  
David Farber  
Leo Federman  
Clifford Feldman  
Lena Fink  
Philip Fischer  
Andrew Foltyn  
Arthur Joseph Foster  
Judith Klein Frank  
Lois Marian Freeman  
Helen Fuller  
Joseph Garlock  
Sally Gendelman  
David Glass  
Samuel Goldberg  
Bert J. Goel  
Barbara G. Gorzeck  
Faye Halpern  
Ruth Hermanoff  
Joseph B. Jablonski  
Ian Jablonski  
Julius Jerome Jameson  
Freda R. Josephson  
Rabbi Morton M. Kanter  
Julius Karden  
Milton Korotkin  
Charles Kottler  
Lillian Kuschinski  
Calvin L. Kuttbauer  
Evan Lamia  
Leota Lavene  
Betty Lenchner  
Harry Lightstone  
Ruth L. Marshall  
Eugene Mondry  
Carol Lauren Myers  
Beatrice L. Newman  
Harlan Obeler  
Deborah Packard  
Sadie Pesick  
Harvey L. Remer  
Anna Resnick

Sylvia Rapaport Richman  
Theodore Rogvov  
Rose Barnett Rosenberg  
Gregory A. Ross  
David Samuel Ruskin  
William Schwartz  
Jack Shamie  
Sally Silverman  
Waldo Sloman  
Ethel G. Steinberg  
Albert Stern  
Henry Small  
Bella Snyder  
A. Benedict Streng  
Larry Tracht  
Clara Waldbott  
Mildred Wayburn  
Eva Weinberger  
Josephine R. Winkelman  
Irena Helen Winston  
Rose Wolf

**MAY 26 – JUNE 1**

Henrietta C. Ascher  
Anne Berman  
Mira Berman  
Rose Bernstein  
Martin Blatt  
Beverly Canvasser  
Harry Cohen  
Barbara Burke Conn  
Anna Stein Daniels  
Betty Danto  
Bernard Devine  
Heather Fisher Welsh  
Zelda Fishman  
Marcus L. Freud  
Rose Galinsky  
Marilyn Schwartz Giles  
Sarah Gottlieb  
Norma Grant  
Samuel Gross  
Philip Fischer  
Andrew Foltyn  
Arthur Joseph Foster  
Judith Klein Frank  
Lois Marian Freeman  
Helen Fuller  
Joseph Garlock  
Sally Gendelman  
David Glass  
Samuel Goldberg  
Bert J. Goel  
Barbara G. Gorzeck  
Faye Halpern  
Ruth Hermanoff  
Joseph B. Jablonski  
Ian Jablonski  
Julius Jerome Jameson  
Freda R. Josephson  
Rabbi Morton M. Kanter  
Julius Karden  
Milton Korotkin  
Charles Kottler  
Lillian Kuschinski  
Calvin L. Kuttbauer  
Evan Lamia  
Leota Lavene  
Betty Lenchner  
Harry Lightstone  
Ruth L. Marshall  
Eugene Mondry  
Carol Lauren Myers  
Beatrice L. Newman  
Harlan Obeler  
Deborah Packard  
Sadie Pesick  
Harvey L. Remer  
Anna Resnick

Elaine Joy Sauve  
Sol Schafer  
Fred L. Scharfenberg  
Andrew Schlesinger  
Maurice Schubot  
William Schwartz  
Jack Shamie  
Sally Silverman  
Waldo Sloman  
Ethel G. Steinberg  
Albert Stern  
Henry Small  
Bella Snyder  
A. Benedict Streng  
Larry Tracht  
Clara Waldbott  
Mildred Wayburn  
Eva Weinberger  
Josephine R. Winkelman  
Irena Helen Winston  
Rose Wolf

**JUNE 2-8**

Israel Abramson  
Sophia B. Alexander  
Joseph Arons  
Leah Baum  
Gertrude D. Beerbohm  
Malvina Berg  
Newton Bernstein  
Gladys Beznos  
Irving Bickman  
Norman Brode  
Sheldon Brodley  
Morris Brown  
John L. Brown  
Henry M. Butzel  
Harry E. Byron  
Harold P. Chapman  
Bia Cnaan  
Jennifer Bailey Cohen  
Barbara Cohen  
Henrietta Cohn  
Ida Helen Copinsky  
Celia Dorf  
Gertrude Dwoskin  
Richard A. Epstein  
Eugene J. Epstein  
Morton B. Farrell  
Ben B. Fenton  
Dorothy Fenwick  
Morton Firsh  
George Fischer  
Betty Jane Fisher  
Joseph Flaschner  
Robert Lee Floyd  
Dorothy Burstein  
Friedman  
Meyer Ginsberg  
Harold S. Goldberg  
Nellie Goldberg  
Bessie Goldfine  
Alice Jean Gottesman  
Harry Herkowitz  
Benjamin Imber  
David Jones  
William Kahn  
Gloria Kallman  
Joy Anne Kaplan  
Irving I. Katz  
Norman Jerome Katz  
Ruth Helen Klein  
Jesse Koenigsberg  
Ruth Korn  
Mendel Korn  
Scott Krandall  
Bessie Krolik  
Maurice E. Lakser  
Norman Lee  
Shirley Leper

Luba Leventhal  
Susanne Jackson Levy  
Simon Loewenstein  
Ruth Love  
Lillian Lumel  
Abraham Marcus  
Joseph J. Marks  
Fred Marshall  
John Mayer  
Janelle Gunn McCammon  
Jacqueline Milgrom  
Leslie Miller  
Rosa Harris Miller  
Charles Edward  
Joseph Miller  
Klara Novoselskaya  
Harry Oer  
Dora Oer  
David Oppenheim  
Milton W. Page  
Antonio Pangrazio  
Bernard Passer  
Joseph David Please  
Morrie Posen  
Barry Ravitz  
Alvin Reifman  
Grace Schreiber Rosman  
Milton J. Ross  
Barbara Rubinstein  
Nurit Anani Sallen  
Jack Salomon  
Joseph Saraqule  
Sandra J. Scholnick  
Herman Schonberg  
Esther S. Schuster  
Harriet Shapira  
Jennifer Gourwitz Sisk  
Jesse A. Sonn  
Edith Souchal  
Carrie Sperling  
Nathan Steinberg  
Robert Tell  
Ronald Weitzman  
Leonard White  
Sadie Wolberg  
Michael Alan Wolf  
Ida Weiner Zlotnick

**JUNE 9-15**

Ray Maurice Abrams  
Sidney L. Alexander  
Jacob Alexander  
Gloria Groskind Bloom  
August  
Simon S. Baer  
Annette Bechek  
Rose Bensman  
Florence Blau  
Bertha S. Bletstein  
Frederic A. Bloch  
Mary Bloomgarden  
Elaine Canvasser  
Bessie Sherbin Columbus  
Rose Shere Cooper  
Daniel Darnell Jr.  
Michael Dashowitz  
Fannie Davidson  
Charles P. Davis  
Jeriann Lee Dolch  
Michael D. Fayne  
Kay Fink  
Audrey Fisher  
Diana Fisher  
Bertha Freedman  
Dora Luft Freeman  
Rose N. Frenkel  
Coleman Friedman  
Joan Fromm  
Theodore Glass  
Ethel Barnett Goldfarb

Jack Duke Goldman  
Herbert Goldstein  
Bertha Greenberg  
Saul Greenfield  
Thomas Guttman  
Marion Handleman  
Katie Hartman  
Shirley Lillian Honeyman  
Sklar  
Mark Jacobson  
Sue Kabakov  
Marshall David Kaplan  
Alfred C. Kaufman  
Elton R. Keller  
Benjamin S. Kott  
Jacob Kovinsky  
Susan Kramer  
David W. Leach  
Helen M. Lenhoff  
George Levenson  
Henry Levitt  
Lennard Loewentritt  
Sarah Levy Miller  
Marion Gordon Moskovitz  
Jeannette Myers  
Toba G. Neumann  
Philip Oslander  
Rose Lippman Parness  
Sheldon Plotnik  
Marilyn Schafer Racklin  
Herbert N. Reinheimer  
Mollie Rosen  
Emanuel Rothman  
Ann Ruben  
Claire Rudick  
Fannie B. Saxe  
Mina Schey  
Theodore Schwartz  
Burnice S. Shaw  
Aaron Silverman  
Tamara Silverman  
Oscar Silverman  
Harriet G. Simon  
Pearl Sherman Sloman  
Pearl Sloman  
Max Solomon  
Jennifer Stampler  
William Louis Stein  
Fay Stern  
Kermit Steuer  
Dorthea Lind Swade  
Jake Saul Swartz  
Jason H. Tickton  
Beverly Prentis Wagner  
Alexander Wesman Sr.  
Steven Wolf  
Martha Wurm

**JUNE 16-22**

Helene Aronsson  
Morris E. Bachman  
William Barron  
Betty G. Binder  
Norman H. Birnkrant  
Elsie Lang Block  
Abraham Bluth  
Fanny Brandwein  
Charles Oscar Briskman  
Dorothy Broder  
Marcia Buch  
Ruth Hertz Cannon  
Moe Caplan  
Barbara Cohen  
Tillie Sazzman Cohn  
Miriam O. Dizik  
Clara Ehrlich  
Lena Frank  
Dorothy Girer  
Gary M. Goodfriend  
Ruth L. Goodman

Jacob Grobman  
Michael Guz  
Werner Heilbrunn  
Ethan Ross Holzman  
Jacob B. Kaplan  
Ralph Karden  
Lenore Kent  
John S. Ketchel  
Ruth S. Klein  
Marian Kozlow  
William Kramer  
David Kurzman  
Mary Laban  
Martin Leon Laker  
Theresa Leopold  
Trude S. Leubuscher  
Samuel Linsky  
Ireta Lurie  
Ethel Macwilliams  
Harold Martens  
Victor Merdler  
Rudolph Meyersohn  
Louis S. Musliner  
Betty Nederlander  
Frederick Nederlander  
Alfred William Payson  
Nathaniel Pernick  
Jennie Pitkowsky  
Blanche Pollack  
Leonard Priest  
David D. Roland  
Emanuel M. Rosenthal  
Emanuel Rothman  
Ann Ruben  
Claire Rudick  
Fannie B. Saxe  
Mina Schey  
Theodore Schwartz  
Burnice S. Shaw  
Aaron Silverman  
Tamara Silverman  
Oscar Silverman  
Harriet G. Simon  
Pearl Sherman Sloman  
Pearl Sloman  
Max Solomon  
Jennifer Stampler  
William Louis Stein  
Fay Stern  
Kermit Steuer  
Dorthea Lind Swade  
Jake Saul Swartz  
Jason H. Tickton  
Beverly Prentis Wagner  
Alexander Wesman Sr.  
Steven Wolf  
Martha Wurm

**JUNE 23-29**

Feige Ackerman  
Marcia Applebaum  
Seymour Donald Berman  
Yetta Bisgeier  
David M. Blanke  
Gayle Shaw Camden  
Lucille B. Cohen  
Benjamin H. Craine  
Clara Cziske  
Jacob Denenburg  
Lillian Dunn  
Alex Feldman  
Bella Feldman  
Sylvia Krell Fisher  
Ella Foltyn  
Louis Frankenstein  
Edith Friedman  
Angel Geller  
Leon Goldberg  
Barbara Goldberg  
Louis Altman Goldenberg  
Frances Grabow Goldman  
Mabel Gottesman  
Mildred Greenfield  
Allan Greenspan  
Abe Greenstone  
Lillian Miller Greenstone  
Hilda C. Hartman  
Rachel Hazan

Robert Howard  
David I. Hubar  
Stanley Imerman  
Alfred L. Jacobs  
Hilda Kimmel  
Meyer Klein  
Theresa Koenigsberg  
Paul Kovinsky  
Sylvia G. Kuttbauer  
Rubiner  
Robert I. Lesser  
Francis Mackie  
Sherry Kim Maloff  
Joseph M. Mellon  
Fanny Meshorer  
Werner Osten  
Mary Plotnik  
Seymour Posner  
Alexander Razdolsky  
Sadie Rice  
Sara Duscoff Roberts  
Alvin M. Rodecker  
Judith Rogoff  
Jacques Rosenfeld  
Suzanne Rosin  
Ronald M. Rothstein  
Alex Rubin  
Karl Rudick  
Theodore B. Sallen  
Leonard Priest  
Sadie R. Schubot  
Ruth Shapero  
Shirley Rosenwasser  
Marcia Rosin  
Ruth Rothschild  
Ray A. Shapero  
Flora Frank Shields  
Benjamin Siegel  
Richard Sitron  
Bernard Spiegel  
Harry Howard Sternberg  
Kate Tischler  
Susan Velick  
Lawrence Warren  
Max Weisbrod  
Anna Wilkus  
Lawrence Charles Wolf  
H. James Zack

**JUNE 30 – JULY 6**

Dennis M. Aaron  
Henrietta Alexander  
Dora Aronsson  
Harry B. Ash  
Saul J. Birnkrant  
Rena Sybil Chernow  
Irvin Cohen  
Albert Dicken  
Seymour Dunitz  
Roslyn Frank Eddy  
Ruth Franklin Einstein  
Bette Entin  
Burton Farbman  
Paul Feiler  
William Feldstein  
Norman Fill  
Robert Fisher  
Hirsch Frank  
Arnold Garvin  
Richard Drew Gershenson  
Samuel L. Goodman  
Pearl Greenbaum  
Marvin Greenberg

Ben W. Gruskin  
 Adelaide K. Harris  
 Lilian Hechtman  
 Norman Helpert  
 Rabbi Richard C. Hertz  
 Bernice Kahn Hopp  
 Harry Hyman  
 Sidney Imerman  
 William B. Isenberg  
 Claire Louise Jacob  
 Mary Ann Janik  
 Ronald James Jankowski  
 Cecil Kanarek  
 Charles Kessler  
 Austin Raynard King  
 Thomas I. Klein  
 Edith Kottler  
 Albert A. Kroll  
 Helen Eder Lattin  
 Fred Lax  
 Max Luftschein  
 C. Harry Malbin  
 Irving Mark  
 Dessie Meyers  
 James Miller  
 Diana Novack  
 Rebecca Pearlman  
 Esther Pelton  
 Joseph N. Prentis  
 Samuel J. Rands  
 Arnold Leon Remer  
 Albert C. Rosenberg  
 Merle Rosin  
 Richard Rosin  
 Carla Rudorf  
 Sarah Levitt Saperston  
 Arthur Schoenbart  
 Rose Shulman  
 Melvyn Silver  
 Bernard Sloan  
 Robert Edgar Steinberg  
 Ann Levy Sternberg  
 David I. Sugar  
 Henry Weinbaum  
 David Weinstein  
 Gertrude Weitzman  
 Barbara Weitzman Bass  
 Shirley Witus  
 Mathew M. Wolfe  
 Rose Wolfe

**JULY 7-13**

Ada Abramson  
 Joseph Applebaum  
 Jerome M. Ash  
 Dora Bachman  
 Norman Baril  
 Melvin Barnett  
 Madeline Belkin  
 Jack Belkin  
 Julius Berg  
 Rose Berk  
 Nettie Brenner  
 Edward Allan Broida  
 Susan Cahn  
 Miriam Chait  
 Minnie Clamage  
 Marcus Cohen  
 Bert Colman  
 Isaac Copinsky  
 Joseph I. Dizik  
 Mendel Ettinger  
 Chester Figg  
 Henrietta Frank  
 Morton A. Freedman  
 Howard Freeman  
 Gordon S. Gard  
 Bessie Garlock  
 Harry Gittlen  
 Margaret Glassman

Abraham L. Goldman  
 Margaret Goldstein  
 Stephen M. Goldstein  
 Marty Gorosh  
 Cheryl Gutow  
 Isadore E. Hamburger  
 Leo H. Harris  
 Benjamin Hartman  
 Harry Arthur Heller  
 Renda Hertz  
 Beatrice Howard  
 Michael Jacoby  
 Imogene Jones  
 Ted Kaczander  
 Rose Zitomer Kaslow  
 Ida Katzman  
 Pearl Schiff Kotzen  
 Harold Kovinsky  
 Abe C. Lappin  
 Jessie D. Maas  
 Marshall Miller  
 Minnie Millman  
 Sybil Mintz  
 L. A. Mizell  
 Jewell P. Morris  
 Maurice Nagler  
 Shirley Palugay  
 Barnett Pricemen  
 Sarah Reinicke  
 Donald Colman Riger  
 Jeanne Schiller Roberts  
 Emil Rose  
 Edward Rose  
 Florence Sadoff  
 Adele Sandler  
 Manuel M. Schubiner  
 Jean Dorman Schwartz  
 Lenore Rita Shapiro  
 Leonard M. Share  
 Jeffrey Siegel  
 Harry Silverman  
 Rosa Helburn Simon  
 Edith Slatkin  
 Eleanor Lehman Sloman  
 Ronald Steinberg  
 Ida Stern  
 Rose S. Sugar  
 Jill Syme  
 Ted Alan Tatchio  
 Kurt Traub  
 Allen Vinocur  
 Helen E. Waldbott  
 Dora Widenbaum  
 Jennie Sweet Wise  
 Sidney J. Wolf

**JULY 14-20**

Pauline Walters Albert  
 Harry Alvin  
 Jeffrey N. Anbender  
 Simon A. Ascher  
 Paul Baker  
 Maxine Grabow Baron  
 Ralph S. Bass  
 Clara Birnbaum  
 Lillian Bleier  
 Gladys Blumenfeld  
 Belle Brown  
 Sam Calfin  
 Isaac Copinsky  
 Joseph I. Dizik  
 Harvey William Cole  
 Arthur Colman  
 Noah Samuel Cutler  
 Shirley Cutler  
 Margaret Elkeles  
 Abe Emmer  
 Mary Evelyn Fisher  
 Ella Beer Frank  
 Harvey Freeman

Julia Fritz  
 Jackie Gage  
 Tillie Gardner  
 Rose Gladston Garelik  
 Mildred B. Gerstman  
 Evelyn Glicksberg  
 Helen Goldenberg  
 Roy Goodman  
 Phillip Goren  
 Dorothy Green  
 Jeffrey Grey  
 Richard Hamburger  
 Ellen Carol Harris  
 Saul Harris  
 John Alfred Heavenrich  
 George Henney  
 Sy Howard  
 Norman Kanter  
 Israel H. Kaplan  
 Minnie Katz  
 Izidor Katz  
 Lois Kay Katzman  
 Mary Rita Kessler  
 Bernice Konikow  
 Larry Laban  
 Hermina Leib  
 Harry B. Levy  
 Amy Lievois  
 Ida Marcus  
 Joseph Markel  
 Martin Marks  
 Adolph Meyers  
 Beverly J. Miller  
 Jack I. Miller  
 Max Millman  
 Jerry Monblatt  
 David Mondry  
 Janice Morganroth  
 Reuben Nelson  
 Max Nosanchuk  
 Nathan Plotkin  
 Meyer L. Prentis  
 Harry Prepsky  
 Herbert Reinheimer  
 George Reinitz  
 Moses Rosen  
 Sol Ross  
 Jennie Pearl Roth  
 Norman N. Rubenstein  
 Daniel A. Saxe  
 Susan Schechter  
 Fred J. Schild  
 Alvin E. Schreiber  
 David Schwartz  
 Rae Shaevisky  
 Pearl Sherman  
 Allan Silber  
 Joe Carl Small  
 Milton D. Smith  
 Sarah Snitz Galer  
 Judge Harry Souchal  
 Lydia Sperber  
 James Alan Stark  
 Irving Steinman  
 Fay Sucher  
 Marvin M. Tamaroff  
 Leah Tron  
 Milton Charles Wagner  
 S. Joseph Wallach  
 Sidney Weisman  
 Rebecca Wenst  
 Rose Werney  
 Harry Wolfman  
 Irvin Yackness  
 Donald Simon  
 Beverly Stern Skilken  
 Margaret Smitt  
 Tunya Sorser  
 Herman Stark  
 Werner E. Stark

**JULY 21-27**

Stanley Abbott  
 Carl C. Adams  
 William Alexander  
 George H. Amber  
 Norman Benjamin  
 Douglas Bloom  
 Robert B. Cohen  
 Alberto Cohen  
 Saul Cohen  
 Anna Curtis  
 Larey Dresner  
 Nancy Dwoskin  
 Jacob Ellenstein  
 Goldie Fleischer  
 Paul Foltyn  
 David Freedman  
 Esther Freedman  
 Lawrence Freeman  
 Morton Genser  
 Stephen N. Gershenson  
 Mildred Gilbert  
 William Gordon  
 Richard Harris Gottesman  
 Edna Roth Grant  
 Russell Jay Green  
 Harry Louis Hershberg  
 Abraham Hochberg  
 Helene Hurwitz  
 Susan Inwald  
 George Kantor  
 Leonard Louis Kata  
 Morton Katz  
 Ida Katz  
 Hyman Katzman  
 Milton Kaufman  
 Sarah Diana Ketchel  
 Jeanette Koch  
 Sally Kohlenberg  
 Leonard Lachover  
 Ethel Lippman  
 Hedy Loewentritt  
 Ida Lurie  
 Helen Maltz  
 Gregory Maltz  
 James Michelson  
 Richard David Mitchell  
 Lester T. Neiman  
 Graham A. Orley  
 Gerd Ostheimer  
 Stephanie Wynn Krasnow  
 Parrish  
 Sophie Penchansky  
 Julius Ring  
 Rhea Robert  
 Marjorie Rose  
 Irving Rose  
 Joseph T. Rosenberg  
 Bertha Rosenfeld  
 Rena C. Rosenfield  
 Lillian Rosenthal  
 Edward M. Rosenthal  
 Dora Rubinstein  
 Robert Rubinstein  
 Isidore Saperston  
 Sonia Schafer  
 Max M. Schwartz  
 Phyllis Schwartz  
 Alan Schwartz  
 Adel Shleypak  
 Sam Shulman  
 Sophie Siegel  
 Mary Hecht Simon  
 Donald Simon  
 Beverly Stern Skilken  
 Margaret Smitt  
 Tunya Sorser  
 Herman Stark  
 Werner E. Stark

Minnie R. Steinbruck  
 Herman Toll  
 Henry M. Weil  
 Sylvia Weisbrod

**JULY 28 – AUGUST 3**

Cecile Siegel Amberg  
 Selma E. Arden  
 Saundra Baron  
 Allan Barron  
 Rose A. Blatnikoff  
 William Borin  
 Charles M. Canvasser  
 Margaret Cohen  
 Max Conway  
 Robert S. Dunn  
 Sy Eller  
 Abraham J. Feinberg  
 Isaac Fisher  
 Brian Galin  
 James Allen Jones  
 Scott Sherman  
 Buzz Turner  
**MAY 3**  
 Julie Bartholomew  
 Ari Byer  
 Rheanna Henney  
 Jay Kohler  
 Taryn Leib  
 Nancy Lewis-Fine  
 Hallie Mauch  
 Sandy Passer  
 Samuel Pernick  
 Matthew Salter  
 Michael Zehnder  
**MAY 4**  
 Max Abrams  
 Jared Beriman  
 Amy Byer  
 Grayson Emanoil  
 Vanda Fradlis  
 Chloe Giron  
 Peter Levin  
 Arielle Levine  
 Brooks Yellen  
**MAY 5**  
 Logan Bernson  
 Laura Eddlestone  
 Bob Finkel  
 Erin Greenberger  
 Jack Harold  
 Joyce LaBan  
 Anthony Merolla  
 Hannah Rosinski  
 Sloane Schiller

Brandon Gorge  
 Bob Katzman  
 Svetlana Kelman  
 Jared Koenig  
 Owen Posner  
 Rachel Rudman  
 Harrison Shaevisky  
 Harriet Shapack  
 Mallory Stewart  
 Alan Walborn  
 Charles Williams

**MAY 1**  
 Davis Korotkin  
 Jade Mabry  
 Gail Mondry  
 Jonathan Nyquist  
 Jake Olsman  
 Sage Pancotto  
 Carolyn Rands  
 Steve Sturman  
 Danielle Taubman  
 Susie Weiner

**MAY 2**  
 Ale Egrin  
 Ben Fisher  
 Miriam Imerman  
 James Allen Jones  
 Scott Sherman  
 Buzz Turner

**MAY 3**  
 Julie Bartholomew  
 Ari Byer  
 Rheanna Henney  
 Jay Kohler  
 Taryn Leib  
 Nancy Lewis-Fine  
 Hallie Mauch  
 Sandy Passer  
 Samuel Pernick  
 Matthew Salter  
 Michael Zehnder

**MAY 4**  
 Max Abrams  
 Jared Beriman  
 Amy Byer  
 Grayson Emanoil  
 Vanda Fradlis  
 Chloe Giron  
 Peter Levin  
 Arielle Levine  
 Brooks Yellen

**MAY 5**  
 Logan Bernson  
 Laura Eddlestone  
 Bob Finkel  
 Erin Greenberger  
 Jack Harold  
 Joyce LaBan  
 Anthony Merolla  
 Hannah Rosinski  
 Sloane Schiller

Brandon Gorge  
 Bob Katzman  
 Svetlana Kelman  
 Jared Koenig  
 Owen Posner  
 Rachel Rudman  
 Harrison Shaevisky  
 Harriet Shapack  
 Mallory Stewart  
 Alan Walborn  
 Charles Williams

Shira Weiner  
 Hyla Williams

**MAY 6**  
 Suzy Farbman  
 Samantha Fink  
 Debbie Fuger  
 James Hill  
 David Khankin  
 Michael Loewenstein  
 Arielle Rosenberg  
 Sam Talmer  
 Heidi Wineman

**MAY 7**  
 Ashton Benkoff  
 Andrew Echt  
 Paul Halpern  
 Jori Joseff  
 Adam Lynch  
 Melanie Mitchell  
 AJ Sherman

**MAY 8**  
 Lillian Gordon  
 Scott Hamburger  
 Nathan Herrin  
 Sanford Klein  
 Gail Mandel  
 Anthony Shapero

**MAY 9**  
 Harrison Bloom  
 Sara Craig  
 Jacob Daniel  
 Archer Fenton  
 Wes Herrin  
 Jack Marwil  
 Ryan Rosenberg  
 Charlie Weiner  
 Alec Weisman

**MAY 10**  
 Brandon Gorge  
 Bob Katzman  
 Svetlana Kelman  
 Jared Koenig  
 Owen Posner  
 Rachel Rudman  
 Harrison Shaevisky  
 Harriet Shapack  
 Mallory Stewart  
 Alan Walborn  
 Charles Williams

Shira Weiner  
 Hyla Williams

**MAY 11**  
 Alena Emanoil  
 Katherine Hansen  
 Erin Lewis  
 Aaron Lowen  
 Penelope Margulies  
 Eleanor Najor  
 Janice Ross  
 Chuck Stern  
 Evan Zacks

**MAY 12**  
 Madison Canvasser  
 Jonathan Dorfman  
 Jason Fisher  
 Brian Galin  
 Derek Howard  
 James Kottler  
 Stevie Kushner  
 Benjamin Landers  
 Barb Levine  
 Lilah Trapp  
 Sawyer Werbling

**MAY 13**  
 Sam Beigler  
 Ryder Bortman  
 Molly David  
 Seth Hittleman  
 Evie Simon  
 Cyvia Snyder  
 Robert Weisberg  
 Susan Weitz

**MAY 14**  
 Maxine Baker  
 Steven Brown  
 Lindsey Bryant  
 Wendy Gruskin  
 Jordan Lowy  
 Judy Marx  
 Bobbi Toll  
 Mathew Turner  
 Luka Wildern  
 Marilyn Wolpin

**MAY 15**  
 Brady Chandler  
 Josh Cohen  
 Nicole Drouillard  
 Marc David Remer  
 Marion Rubin  
 Lainey Steuer  
 Lincoln Weinger

Shira Weiner  
 Hyla Williams

**MAY 16**  
 Barbara Haber  
 Adam Redstone  
 Ashton Ruby  
 Jonah Ruby  
 Tommy Sherman  
 Penelope Surnow  
 Dallas Wurn  
 Robert Zieve

**MAY 17**  
 Danielle Branch  
 David Greenblatt  
 Leslie Rofel  
 Anita Salomon  
 Billy Wiseman

**MAY 18**  
 Henry Drouillard  
 Michael Hermanoff  
 Adam Lowy  
 Sheri Marcus  
 Nancy Shapero  
 Donald Stotland  
 Dylan Wolf

**MAY 19**  
 Lois Berk  
 Byron Canvasser  
 Cheryl Chodun  
 Greta Feldman  
 Dylan Fillmore  
 Lindsay Foltyn  
 Amanda Rosenberg  
 Edward Schulak  
 Joe Scurti  
 Mark Shwayder  
 Avery Simmerman

**MAY 20**  
 Harper Fantich  
 Sandra Lee  
 Branson Paige  
 Kath Pelton  
 Nanci Rands  
 Rachel Sher  
 Eric Zacks

**MAY 21**  
 Allison Egrin  
 Ezra Gordon  
 Walter Halpern  
 Arielle Inwald  
 Richard Kulbersh  
 Svetlana Lebedinski

Whitney Margulies  
 Ali Posner  
 Viktorya Strumban  
 Sara Tatchio  
 Roberta Viviano  
 Trudi Wineman

**MAY 22**  
 Emma Dolan  
 Caity Dolan  
 Myra Harper  
 Ken Korotkin  
 Rob Levy  
 Jennifer Prohow

**MAY 23**  
 Michael Abrams  
 John Harris  
 Jonathan Kottler  
 Emilia Pardo  
 Buddy Sher  
 Lois Stein  
 Ella Vanderkooi

**MAY 24**  
 Lena Epstein  
 Dorothy Kahn  
 Mitchell Kantor  
 Brooke Michelson  
 Chloe Shirley  
 Shanon Stibor

**MAY 25**  
 Austin Chasnick  
 Noah Gindi  
 Carole Goldstein  
 Max Gross  
 Schoen Herkowitz  
 Isaac Leader  
 Liam Perekhodnik  
 Keri Seeney  
 Mary Senter

**MAY 26**  
 Lily Ball  
 Sammy Bernson  
 Camryn Geller  
 Mollie Glasier  
 James Miller  
 Rebecca Nyquist  
 Lynn Radtke  
 Miles Schey  
 Frances Schulak

**MAY 27**  
 Brandon Baril  
 Hudson Canvasser  
 Michael Colman  
 Jake Gordon  
 Lisa Kantor

**MAY 28**  
 Leonard Beznos  
 Caity Cohen  
 Ben Cole  
 Greg Jacob  
 Kari Mahaffey  
 Jared Rothberger  
 Bailey Simmerman  
 Lizzie Zeman

**MAY 29**  
 Jack Canvasser  
 Nori Cohen  
 Buddy Jack  
 Lexi Greenberger  
 Josh Hazan  
 Stuart Litt  
 Stephen Schwartz-  
 Fenwick

**MAY 30**  
 Katie Galin  
 Jackie Kraft  
 Brian Newman  
 Leah Pernick  
 Ava Singer  
 Noah Sorser

**MAY 31**  
 Marc Benkoff  
 Jay Fishman  
 Andrew Gorosh  
 Isabella Gorosh  
 Isabella Howard  
 Emily Johnson  
 Solomon Kwartowitz  
 Zoe Naodel  
 Lisbeth Nordstrom-  
 Lerner

Jeremy Posner  
 Margaret Stark  
 Eliot Weiner

**MAY 1**  
 Jamie & Joshua Revitz

**MAY 2**  
 Judith & Dick Komer  
 Yael & Andrew Rosen

**MAY 3**  
 Ruth & Sam Talmer

**MAY 4**  
 Nancy & Lawrence Bluth

**MAY 5**  
 Judith & John Kamins  
 Linda & Scott Sircus

**MAY 10**  
 Jill & Jameson DeVol

**MAY 12**  
 Baxter & Michelle Trapp

**MAY 13**  
 Julie & Steven Brown

**MAY 14**  
 Nancy & James Grosfeld

**MAY 16**  
 Adina & Alan Boyd  
 Margie & Barry Kaplan  
 Michelle & David Lame  
 Carol Ann & Warren Rose

**MAY 21**  
 Ali & Ryan Smith  
 Carol & Stan Tickton

**MAY 22**  
 Jennifer & Jared Bortman  
 Emily & Jason Dizik

**MAY 23**  
 Kathleen & Walter Shapero

**MAY 24**  
 Rochelle & Stewart Frank  
 Wendy & Ronald Gruskin  
 Leigh & Jason Hittleman  
 Rae & Scott Monchnik  
 Jodi & Adam Robin

**MAY 25**  
 Michele & Robert Davis  
 Rachel & Carey Kalmowitz  
 Jenna & Aric Klar  
 Gina & Douglas Salzenstein  
 Gwen & Evan Weiner

**MAY 25**  
 Michele & Robert Davis  
 Rachel & Carey Kalmowitz  
 Jenna & Aric Klar  
 Gina & Douglas Salzenstein  
 Gwen & Evan Weiner

**MAY 25**  
 Michele & Robert Davis  
 Rachel & Carey Kalmowitz  
 Jenna & Aric Klar  
 Gina & Douglas Salzenstein  
 Gwen & Evan Weiner

**MAY 26**  
 Natalie & Andrew Baum  
 Alicia & Jeffrey Chandler  
 Paula & Daniel Fischer

**MAY 26**  
 Natalie & Andrew Baum  
 Alicia & Jeffrey Chandler  
 Paula & Daniel Fischer

**MAY 26**  
 Natalie & Andrew Baum  
 Alicia & Jeffrey Chandler  
 Paula & Daniel Fischer

Sara & Adam Levitsky  
 Anne & Steve Weiner

**MAY 27**  
 Sarah & Brian Lyngaas  
 Reesa & Morris Potash  
 Alana & Kyle Wildern

**MAY 28**  
 Marsha & Jeffrey Miro  
 Rachel & Justin Wedes  
 Colleen & Jeremy Werner

**MAY 29**  
 Anne & Jason Canvasser  
 Sarah & Sam Crane  
 Kori & Andrew Echt  
 Linda & Ed Levy Jr  
 Lynn & Jim Newman

**MAY 30**  
 Michelle & Alexander Ernst  
 Danielle & Matt Gabbard  
 Gail & Irv Lorber  
 Risa & Frank Mabry

**MAY 31**  
 Mary Ann & Frank Gravi

## june BIRTHDAYS

**JUNE 1**  
Susan Behrmann  
Elle Beznos  
John Hirsh  
Evan Leibhan  
Wyatt Levin  
Kate Matten-Remer  
Sydney Saltz  
Brett Turner

**JUNE 2**  
Allison Fine  
Jered Floyd  
Shoshana Gordon  
Spencer Levin  
Carolyn Nosanchuk  
Barbara Schiff  
Lauren Suna  
Joyce Welford

**JUNE 3**  
Miriam Cohen  
Catherine Glazer  
Samantha Goldsmith  
Michael Lawrence  
Marcia Lewis  
Beth Michelson  
Jeffrey Miro  
Oliver Siegel  
Matt Wolf

**JUNE 4**  
John Cohen  
David Comden  
Mac Kolchinsky  
Robert Michaels  
Michael Minkin  
Carol Simon  
Sarah Tarnowsky  
Jay Victor

**JUNE 5**  
Asher Adelson  
Kate Burkett  
Heidi Dreyfuss  
Max Emmer  
Morgan Goodman  
Rebecca Lynch  
Ralph Nunez

Lloyd Pont  
Lila Purther  
Payton Renusch  
Laura Segal  
Bradley Woodberg

**JUNE 6**  
Lawrence Freedman  
Suzanne Gilson  
Jeffrey Goldsmith  
Aaron Goldstein  
Jack Gross  
Juliana Katzman  
Lindsay Levin  
Larry Maloff  
Mark Miller  
Michelle Remer Davis  
Sharon Resnick  
Steven Saraque  
Elise Stotland  
Sheldon Toll  
Alex Weberman  
Bobby Weiner

**JUNE 7**  
Cheryl Blutworth  
Stephanie Gerson  
Jagger Sasson  
Neil Simmerman  
Baker Urdan

**JUNE 8**  
Jason Ball  
Matt Gabbard  
Scott Marx  
Robert Michaels  
Elly Rose  
Scott Seligman  
Ian Williams

**JUNE 9**  
Jan Freedman  
Lawrence Gach  
Gary Goodman  
Leslie Pappas  
Jane Schwartz  
Ali Smith  
Ned Specktor  
Wendi Zupmore

**JUNE 10**  
Stephanie Belkin  
Michael Krefman  
John Weber

**JUNE 11**  
Cheri Bietfeld  
David Bloom  
David DeVine  
Sharon Green  
Matthew Gutman  
Larry Imerman  
Aiden Kaplan

**JUNE 12**  
Sophia Bobrow  
Robyn Coden  
Harriet Cooperman  
Margi Epstein  
Jeremy Fisher  
Joanee Hurwitz  
Hilary Kotik

**JUNE 13**  
Lillian Curnutte  
Eric Dresner  
Ilana Fisher  
Meredith Frenkel  
Jonah Lipman  
Katherine Scher  
Sydney Stibor  
Bentley Blum  
Marcy Grant

**JUNE 14**  
Jane Gross  
Abraham Miller  
Jenny Passer Stauber

**JUNE 15**  
Elaine Brockman  
Marcy Klein  
Kelly Kling-Selander  
Traci Lawrence  
Michael Radner  
Jody Webb  
Holly Weissman

**JUNE 16**  
Otto Dube  
Jonathan Goldstein  
Ethan Kalt  
Kathy Marshall  
Max Milstein  
Glenn Rosin  
David Rubinstein  
Amy Silverstein  
Dusty Zacks

**JUNE 17**  
Denny Bachman-  
Rosinski  
Wesley Beebe  
Edwina Davis  
Danny Fishman  
Grayson Hutchins  
Maya Jacobs  
Lynn Newman

**JUNE 18**  
Shay Gunsberg  
Rachel Ann Miller  
Pamela Renusch  
Adina Stein-Boyd  
Arnold Weingarden

**JUNE 19**  
Sigrid Ainhorn  
Erica Brown  
Bianca Feldman  
Rachel Graff  
Ricki Grand  
Marc Greenberger  
Heidi Kreindler  
Jaden Rockind  
Maddie Wein  
Nancy Wolpin-Rechter

**JUNE 20**  
Jillian Byer  
Jason Grosfeld  
Madison Salzenstein  
Sam Shamie  
Walter Shapero  
Bridget Strumban

**JUNE 21**  
Jim Colman  
Eve Lewis  
Jeff Margulies  
Earl Remer

**JUNE 22**  
Joe Berke  
James Grosfeld  
Jake Tompkins  
Keri Wigod

**JUNE 23**  
Emy Beckett  
Alana Greenspan  
Gar Sims Jones  
Alan Toby  
Mark Zacks

**JUNE 24**  
Natalie Chaiken  
Marshall Cyrlin  
George Dickstein  
Michael Freedman  
Olivia Kroll  
Jackson Paige  
Sarah Schoenbart  
Ava Taylor  
Allie Yellen

**JUNE 25**  
Preston Blum  
Jaye Coden  
Molly Hauser  
Anthony Kantor  
Stuart Kayne  
Dave Richardson  
Angie Spickler

**JUNE 26**  
Donald Klein  
Jo-Ann MacWilliams-  
Wolf  
Elaine Schonberger  
Lila Shapiro  
Michael Spickler  
Amy Willens-  
Rosenberg  
Veronica Wolfe

**JUNE 27**  
Jeffrey Canvasser  
Rick Goren  
Ron Kerwin  
David London  
Carol Park  
Alysa Saperstein  
Alex Scharg  
Sam Smetanin  
Hanna Sorser  
Ian Wolfe

**JUNE 28**  
Henry Abrams  
George Cetner  
Jason Eddleston  
Ethan Fink  
Robert Kamins  
Ellie Leach  
Paul Ross  
Debbe Saperstein  
Celeste Tell  
Eric Wolfe

**JUNE 29**  
Jay Cardew  
Joanna Geer  
Daniel Lebedinski  
Shelley Roberts  
Lisa Schwartz  
Beth Wolpin-Gans

**JUNE 30**  
Susan Abrams  
Bob Blau  
Susan Borman  
Sara Hutchins  
Sylvia Lee  
Barry Pearlman  
Daniel Prohow  
Felix Ross  
Noah Singer

## july BIRTHDAYS

**JULY 1**  
Jacob Bloom  
Noa Brown  
Lisa Miller  
Earl Snyder

**JULY 2**  
Stacey Bernson  
Laura Gorosh  
Samuel Jassenoff  
Shaye Kerwin  
William Slatkin  
Aaron Zupmore

**JULY 3**  
Goldie Berk  
Scott Kaufman  
Risha Kaye  
Bryce Kotik  
Robert Rosinski  
Danny Rotter  
Jacob Stein

**JULY 4**  
Whitney Coopersmith  
Jeff Gunsberg  
Lauren Jahr  
Boris Khankin  
Bryan Reinicke  
Goldie Vanderkooi

**JULY 5**  
Rebekah Canvasser  
Nicky Davis  
Derrick Glencer  
Stephanie Kauffman  
Marvin Krefman  
Mina Levin  
Michael Stakits  
Arielle Zupmore

**JULY 6**  
Sharon Adler  
Jonathan Adler  
Margot Curnutte  
Dave Johnson  
Aaron Kaplan  
Alexander Loewenstein  
Nelson Pont  
Carolyn Resnick  
Eric Rosin

**JULY 7**

Marshall Blau  
Graham Eddleston  
Jay Kaplan  
Barbara Kohler  
Anna Morks  
Les Siegel  
Anya Smetanin  
Dima Smetanin  
Alex Wineman

**JULY 8**  
Rose Garber  
Bethann Kalt  
Ian Kohler  
Eden Kramer  
Nathan Mondry

**JULY 9**  
Jon Birnkrant  
Jared Bortman  
Michael Federman  
Amy Greenberg-  
Draizen  
Ariana Howard  
Nicole Jahr  
Richard Shapack  
Brittany Turner  
Nomi Verier-Grossi  
Amelia Victor  
Lucia Weiner

**JULY 10**  
Nancy Edmunds  
Jill Greenberg  
Haley Harper  
Nathan Modell  
Anthony Schiff  
Ethan Weisman  
Paul Wolf

**JULY 11**  
Tori Adelson  
Savannah Adelson  
Jocelyn Cohen  
Elliot Darvick  
Jenny Kessler  
Chloe Kreindler  
Maxwell Levitsky  
Helaine Mandell  
Karen McDonald-Weiss  
Rion Nunez  
Jason Nunez

**JULY 12**  
Elizabeth Curran  
Howard Lee  
Carol Levy  
Emmett Olsman

**JULY 13**  
Steven Blank  
Gavin Christie  
Aviva Friedman  
Sloane Hittleman  
Robert Levine  
Alan Posner  
Stacey Raznick  
Serge Sorser  
Tyler Warsh  
Matt Warsh

**JULY 14**  
Matthew Galin  
David Goldberg  
Danny Levy  
Joyce Miller  
Theodore Young

**JULY 15**  
Mark Dizik  
Elizabeth Dizik  
Stuart Egrin  
Alexis Farbman  
Sutton Holtz  
Ellen Kaye  
Sarah Lynch  
Maddie Monchnik  
Lindsey Rennert  
Brooke Taylor  
Lowell Wolfe

**JULY 16**  
Adam Behrendt  
Eleanor Blum  
Adrienne Gordon  
Beth Hill  
Alex Lambert  
Sandy Marks  
Carolyn Marx  
Zachary Menken  
Roy Michael Remer  
Deborah Ross  
Marc Sable  
Lisa Scholnick

Mason Ossipove

**JULY 17**  
Avi Bagdade  
Danny Feinbloom  
Peggy Frank  
Blake Friedman  
Anna Greenstone  
Wendy Schwartz  
Evan Webb  
Deloris Weinstein

**JULY 18**  
Brenda Friedman  
Rebecca Hazan  
Beth Josephson  
Scott Kantor  
Howard Lax  
Stuart Lockman  
Rick Loewenstein  
Frank Mabry  
Milo Rothberger  
Lewis Sandy  
Mason Shaevsky  
Ari Shapiro  
Carly Taub

**JULY 19**  
Franki Bagdade  
Jordan Broder  
Leslie Deitch  
Sophie Drouillard  
Jane Fenkell  
Jeff Hollander  
Cole Jacobson  
Hanna Rybak  
Carlee Welbourne

**JULY 20**  
Jill DeVol  
Benjamin Friedman  
Sara Levitsky  
David Meckler-Miller  
Barbara Redstone  
Lucy Shields Henney  
Stephanie Wineman

**JULY 21**  
Bill Edmunds  
Noam Ellis  
Rachel Khankin  
Ari Kotzen-Reich  
Adam Levitsky  
Elizabeth Pensler  
David Rotter  
Ilene Stutman  
Neal Welbourne

**JULY 22**  
Jeffrey Binder  
Sydney Blau  
Levi Davidson  
Max Margolis

**JULY 23**  
Natasha Aronson  
Meredith Bachman-  
Frenkel  
Sandra Beigler  
Alan Boyd  
Ryan Gindi  
Karen Kaczander  
Carey Kalmowitz  
Steven Menken  
Ms. Mernalyn  
Carly Redstone  
Frances Rose  
Bruce Saperstein  
Brooke Wolf

**JULY 24**  
Jeffrey Howard  
Natalya Lembersky  
Craig Matchuk  
Abigail Perehodnik  
Darren Roberts  
Mitzi Robinson  
Steve Rubin  
Karen Siporin

**JULY 25**  
Jaime Ishbia  
Mila Muchnik  
Wendy Roth

**JULY 26**  
Emily Blank  
Samara Chodock  
Sydney Fong  
Lauren Garfield-Herrin

**JULY 27**  
Thea Kayne  
Ava Paige  
Ari Richardson  
Elizabeth Strumban

**JULY 28**  
Christa Dash  
Zack Friedman  
Alana Gun  
Hunter Helfman  
Max Richardson  
Richard Schwartz

**JULY 29**  
Michelle Alexander-  
Gutman  
Lainie Epstein  
Elena Feldman  
Jay Kreindler  
Nanci Lasser-Fearon  
Andrew Marx  
Michelle Posner  
Mitchell Schwartz  
Arden Shwayder  
Debbie Simon

**JULY 30**  
Lilly Berg  
Daniel Canvasser  
GG Fill  
Ann Flood  
Jeffrey Graff  
George Leach  
Scott Monchnik  
Brett Powell

**JULY 31**  
Beau Blank  
Parker Brandt  
Anne Canvasser  
Tom Jablonski  
Shelley Marks  
Holly Rotter  
Macy Scurti

**JULY 1**  
Kelsey & Evan Ross

**JUNE 2**  
Elizabeth & Mark Dizik  
Erica & David Herc  
Kelly & James Selander  
Diane & Lyle Victor  
Elaine & James Wesman

**JUNE 3**  
Gretchen & Ethan Davidson

**JUNE 4**  
Karen & Leonard Beznos  
Jessica & Ryan Gertner  
Nicole & Greg Schwartz

**JUNE 6**  
Rochelle & Otto Dube  
Patti & Rick Phillips

**JUNE 8**  
Elisa & Stuart Stoller

**JUNE 9**  
Susan & Robert Dresner  
Tracey & Eric Wolfe

**JUNE 10**  
Mary & David Miller

**JUNE 12**  
Pauline & Daniel Feldman  
Elizabeth & Derek Hill  
Nelson & Norma Pont

**JUNE 13**  
Bianca & Michael Siegel

**JUNE 14**  
Jan & Lawrence Freedman  
Rochelle & Harold Margolis

**JUNE 15**  
Marjorie & Bill Sandy

**JUNE 16**  
Jacqueline & Brian Gurwin

**JUNE 17**  
Mildred & Fred Minkow  
Aly & Jeremy Sasson  
Katherine & Eric Scher

**JUNE 18**  
Lisa & David Feinbloom  
Linda & Robert Michaels

**JUNE 19**  
Emily & Peter Levin  
Francine & Steven Menken

**JUNE 20**  
Christine & David Colman  
Laura & Graham Eddleston  
Lana & Michael Lembersky

**JUNE 21**  
Susan & Barry Lepler

**JUNE 22**  
Cheryl & Ron Kerwin  
Gail & Ken Posner  
Lindsay & Joe Scurti  
Elaine & Steve Sturman

**JUNE 23**  
Barbara & Howard Belkin  
Nadine & David Farbman  
Joanna & Jack Geer  
Carolyn & Charles Greenberg

**JUNE 24**  
Megan & Zachary Brudney  
Janie & Max Franklin  
Barbara & Neil Goldman

**JUNE 25**  
Sandra & Robert Weitz

**JUNE 27**  
Michelle & Alan Posner  
Jennifer & Dan Weckstein  
Melissa & Jeremy Wolf

**JUNE 28**  
Joanne & Arnold Danto  
Fran & Michael Goran  
Barbara & Jon Haber  
Brooke & Jeff Margulies

**JUNE 29**  
Emily & Brandon Gorge  
Debra & Christopher Hackman  
Lauri & Lawrence Hoffman  
Kim & Lenny Kerwin  
Barbara & Daniel Redstone  
Amanda & Danny Rosenberg  
Denise & Robert Rosinski

**JUNE 30**  
Allison & Jason Cardew  
Stacy & Gordie Schaeffler  
Dana & John Weber

## july ANNIVERSARIES

**JULY 1**  
Patty & Dale Frenkel

**JULY 2**  
Alison & Aaron Goldstein  
Danielle & Joshua Kroll  
Danielle & Gal Taubman

**JULY 3**  
Julie & Jerry Pelton  
Stacey & Jason Raznick

**JULY 4**  
Franki & Jeffrey Bagdade

**JULY 5**  
Sheryl & Joe Inwald

**JULY 6**  
Harriet & Richard Shapack  
Shanon & Fred Stibor

**JULY 7**  
Jeanette & Mark Hauser

**JULY 8**  
Suzanne & Bob Bluestein  
Lisa & Bob Katzman  
Karen & Steve Siporin

**JULY 10**  
Amy & Michael Margolis  
Susie Weiner & Ken Chodock

**JULY 11**  
Sarah & Joel Szirtes

**JULY 12**  
Jean & Howard Dubin  
Judy & Scott Roberts

**JULY 14**  
Nicole & Joel Mazur

**JULY 15**  
Jane & Edward Weberman

**JULY 18**  
Lindsay & Jonathan Schey

Barbara & Baker Urdan

**JULY 20**  
Erica & David Brown

**JULY 21**  
Barbara & Steven Kohler

**JULY 22**  
Paula & John Harris

**JULY 23**  
Sara & Michael Minkin

**JULY 24**  
Connie & Jim Colman  
Elizabeth & David Kaner  
Irene & Rick Soble

**JULY 25**  
Maxine & Larry Baker  
Karen & Bruce Kaczander  
Alissa & Steven Vanderkooi  
Jennifer & Benjamin Werbling

**JULY 27**  
Emily & Alec Cohen

**JULY 30**  
Harriet & Mark Cooperman  
Nancy & Don Powell  
Melissa & Win Schiller  
Erika & Gregg Solomon

**JULY 31**  
Norma & Richard Keil-Shaw  
Estelle & Mark Kwartowitz  
Janelle & Raymond Rosenfeld

**RAYMOND & SHIRLEY ABRAMS  
YOUTH GROUP RECREATION  
FUND**  
IN MEMORY OF  
ARNIE FISHER  
CHERYL HURWITZ  
MYRNA JOR KETAI  
JERRY KORCHAK  
AILEEN KLEIMAN  
HARLEY SHAY ROCKIND  
KENNETH STONE  
DALE IRIS WEINGARDEN PRINSTEIN  
*Henry & Wendy Abrams*

**BETH ELDERS**  
IN MEMORY OF  
FRANCES CHAIKEN  
*Norty & Suzette Chaiken*

**RABBI MEGAN BRUDNEY  
DISCRETIONARY FUND**  
IN HONOR OF  
THE BIRTH OF RABBI BRUDNEY  
NEW BABY JOLIE  
DR. ADRIAN & MYNETTA CHRISTIE  
NEW HOME  
THE BIRTH OF MARGO & JERRY  
KLINE GREAT GRANDCHILD  
*Elaine Tell*  
BIRTH OF YOUR BEAUTIFUL  
DAUGHTER  
*Phyllis Loewenstein*  
IN MEMORY OF  
ARNOLD BERG  
*Ron and Wendy Gruskin*  
MAX FUTERNICK  
*Family of Max Futernick*  
YOUR HELP WITH  
HUDSON'S BAR MITZVAH  
*Keith & Carly Wurn*  
ESTHER MINTZ  
*The Family of Esther Mintz*  
JAMES SLOWIK  
*Amy Kessler*

**THE ALEXANDAR DAVID  
BURNSTEIN FOR MUSICAL  
PERFORMANCE**  
IN MEMORY OF  
ALEX BURNSTEIN  
Kal Goren

**CARING COMMITTEE FUND**  
IN MEMORY OF  
JOANNA REBELGALE  
*Stan & Cheryl Chodun*

**DEUTCHMAN FAMILY FUND**  
IN HONOR OF  
RABBI BRUDNEY'S NEW  
DAUGHTER, JOLIE  
*Jim & Cathy Deutchman*

**RUTH FRANKLIN EINSTEIN  
EDUCATIONAL ASSISTANCE FUND**  
IN MEMORY OF  
ALICE BARROW  
*Carol Schwartz*

**RABBI LEO M. FRANKLIN  
ARCHIVES FUND**  
IN MEMORY OF  
BRUCE MACWILLIAMS  
*Suzi MacWilliams*

**GENERAL DONATION**  
IN HONOR OF  
SADIE LIPKSY  
*Pamela Applebaum & Gaal Karp*  
MARC ZUPMORE  
*DTE The Blackbaud Giving Fund*  
IN MEMORY OF  
EUGENE APPLEBAUM  
JOSEPH APPLEBAUM  
MARCIA APPLEBAUM  
MINNIE APPLEBAUM  
SEYMOUR LIPSKY  
*Pamela Applebaum & Gaal Karp*  
AMY BERKE  
*Brittany Turner, Kent and Cathy*

*Grizzell, Barbara Kappy, Howard Emorey, Martin Davidson, The Players*  
JOE BLOCH  
*Barbara Bloch*  
PHILIP BOLTON  
*Paula Marks-Bolton*  
ERIKA CORBY  
PAUL CORBY  
*Herbert & Margot Gardner*  
ROBERT ECHT  
*Kori Belzer & Andrew Echt*  
REAGAN EVANS  
*Jonathan & Michelle David*  
RAY H. EINSTEIN  
GORDON FISHMAN  
*Wendy Fishman*  
ARNIE FISHER  
*Rita Packard*  
BABETTE SLAWIN FRIEDMAN  
*Mitzi & Dale Robinson*  
SHIRLEY GREENSPAN  
*Elliott & Sandy Greenspan*  
ERWIN HARVITH  
*Joan Abraham Abraham*  
IRVIN HERMANOFF  
*Michael & Sandy Hermanoff*  
RAISA KELMAN  
*Zinovyj & Svetlana Kelman*  
LILLIAN KOMER  
*Dick & Judy Komer*  
DR. LAWRENCE E. LEE  
*Sylvia Lee*  
HERBERT PACKARD  
*Rita Packard*  
MORRIS RUBIN  
*James Weintraub*  
IDA RUBINSTEIN  
*David Rubinstein*

IRIS SANDLER  
*Jean Willens*  
JESSIE K. STERN  
*Sheldon Stern*  
ETTA SHAPERO  
*Walter Shapero & Kathleen Straus*  
MARY SOLOMAN  
*Jane & Jack Solomon*  
MAUREEN ASHMAN  
*Larry Ashman*  
RENEE ZAHLER  
*Howard Sikora*  
EDWARDA (ESTHER) ZAKALIK  
*John Weber & Dana Zakalik*

**GLAZER INSTITUTE FUND**  
IN HONOR OF  
MARK & MAYNA GLAZER  
*Denny Brown*

**THE MICHELSON-HABER  
MEMORIAL FUND**  
IN HONOR OF  
95TH BIRTHDAY OF MERTON J. SEGAL  
*Jon & Barbara Haber*

**HOWARD & CELIA JACOBSON  
MEMORIAL FUND FOR THE  
BETH ELDERS OF  
TEMPLE BETH EL**  
IN MEMORY OF  
BRIAN APPLEBAUM  
*Betty Applebaum*  
ROCHELLE SCHULIST  
*David & Elaine Brockman*

**CANTOR RACHEL GOTTLIEB  
KALMOWITZ DISCRETIONARY  
FUND**  
IN HONOR OF  
CANTOR RACHEL'S 20TH  
ANNIVERSARY AT TBE  
*Margaret Meyer*  
CANTOR RACHEL'S 20 YEARS OF  
DEVOTED SERVICE TO TBE  
*Margi Epstein*  
ELLIOT AND ALIZA AUGUST  
B'NAI MITZVAH  
*Tom & Kathy August*  
YOUR HELP WITH  
HUDSON'S BAR MITZVAH  
*Keith & Carly Wurn*  
IN MEMORY OF  
AMY BERKE  
*Earl & Jacqueline Remer*  
HEATHER B. SIEGEL  
*Lisa Siegel MD*

**CANTOR RACHEL GOTTLIEB  
KALMOWITZ MUSIC FUND**  
IN HONOR OF  
CANTOR RACHEL, THANK YOU  
FOR BLESSING US ON OUR 40TH  
WEDDING ANNIVERSARY  
*Mark & Mania Glazer*  
IN MEMORY OF  
MARISE LEVY  
JUDY MICHAELS  
*Ken Korotkin*

**ELLIN, HAROLD & WILLIAM  
LAWSON INSTITUTE FUND**  
IN HONOR OF  
JOHN LAWSON  
*Ivan Behrmann*

**EDWARD & JULIE LEVY ISRAEL  
YOUTH FUND**  
IN MEMORY OF  
JAN MOREAS  
*Stephen & Carol Paul*

**LIBRARY BOOK DEDICATION FUND**  
IN HONOR OF  
MARGO & JERRY KLINE, ON THE  
BIRTH OF THEIR GREAT  
GRANDSON CALLUM GRAY  
PARTRIDGE  
*Arthur & Lainey Steuer*  
HELEN VERA PRENTIS LANDE  
*Nelson Prentis Lande & Maydee Lande*

**MARSHALL & PHYLLIS  
LOEWENSTEIN FAMILY  
CAMPSHIP FUND**  
IN MEMORY OF  
DR. MORTON CASH  
PHYLLIS LOEWENSTEIN  
*Phyllis Loewenstein*  
SANDI MILLMAN  
*Phyllis Loewenstein*

**ALAN LOWEN BNAI  
MITZVAH FUND**  
IN MEMORY OF  
DAVID HUBERT  
*Janice Vanstrien*

**FREDERICK H. MARX  
MEMORIAL FUND**  
IN MEMORY OF  
ROBERT KOMER  
ELEANOR PARKER  
*Sally Marx*

**RABBI MARK MILLER  
DISCRETIONARY FUND**  
IN HONOR OF  
BINAI MITZVAH OF  
ALIZA AND ELLIOT AUGUST  
*Tom & Kathy August*

RABBI MILLER  
CANTOR RACHEL  
*Sissi Lapides*  
RABBI MILLER, THANK YOU FOR  
THE BLESSING ON OUR 40TH  
WEDDING ANNIVERSARY  
*Mark & Mania Glazer*  
GRATITUDE FOR OUR SISTER  
LINDA'S SERVICE  
*Mark & Elaine Schonberger*  
YOUR HELP WITH  
HUDSON'S BAR MITZVAH  
*Keith & Carly Wurn*  
IN MEMORY OF  
AMY BURKE  
*Marvin & Marci Shuman*

**PRENTIS MEMORIAL  
LIBRARY FUND**  
IN MEMORY OF  
REBECCA FOGEL  
*Denny Brown*

**BEVERLY & MERTON SEGAL  
FAMILY FUND**  
IN HONOR OF  
95TH BIRTHDAY OF MERT SEGAL  
*Rosalie Rosen*

**LOIS & MARK SHAEVSKY FOOD  
ALLERGY AWARENESS FUND**  
IN HONOR OF  
B'NAI MITZVAH OF  
ALIZA AND ELLIOT AUGUST  
*Mark & Lois Shaevsky*  
IN MEMORY OF  
ROSE LEVI  
*Mark & Lois Shaevsky*

**SISTERHOOD BRAILLE FUND**  
IN HONOR OF  
SPECIAL BIRTHDAY OF ANN CONRAD  
*Lee & Sandy Marks*  
JIM DONNELLY  
JAIMIE LERNER 36 UNDER 36  
CAROL & BRUCE PLISNER  
GRANDDAUGHTER, RALEIGH DREW  
Alan & Karen Lowen  
YOUR DEDICATION TO  
BRAILLE LITERACY  
*Izzy Breiter - Lighthouse for the Blind St. Louis*

**MAMIE & JASON TICKTON  
MUSIC FUND**  
IN HONOR OF  
LAINEY & ARTHUR STEUER 65TH  
ANNIVERSARY  
*Sharron Kreindler*  
IN MEMORY OF  
HARVEY NUSBAUM  
*Frayda Riger*  
BELLA WAIS  
*Sharron Kreindler*

## Consider a Gift That Makes a Difference

We invite you to consider making a gift to TBE. Your gift and support will enable us to continue our strong tradition of service to you and to the community.

- Make a donation to the Annual Appeal
- Sponsor an Oneg or Program
- Donate to our Security Fund
- Remember, honor and celebrate your family and friends by making a tribute to Temple
- Give a gift to the Temple Endowment Fund
- Dedicate a seat in the Sanctuary
- Establish a Tribute Fund in honor or memory of a loved one
- Mark significant events with the purchase of a simcha leaf
- Remember a loved one with the installation of a Memorial Plaque or Memorial Board
- Consider a Monetary or real estate gift to the Endowment Fund through Estate Planning

To make a gift or for general questions, please contact Executive Director, Rachel Ellis at 248-865-0636 or [rellis@tbeonline.org](mailto:rellis@tbeonline.org)

Remember, honor and celebrate your family and friends by making a tribute to Temple.



To donate scan the QR code or visit us at [tbeonline.org](http://tbeonline.org).

For assistance with tributes, contact Evangela at [edove@tbeonline.org](mailto:edove@tbeonline.org) or 248-851-1100.

# May

- 03 8:00 AM**  
Coffee Connections (IP)
- 7:00 PM**  
Shabbat Services with Elana Arian Artist-in-Residence (IP/V)
- 04 10:00 AM**  
Torah Study/Mourners Kaddish (V)
- 11:30 AM**  
Nosh and Knowledge with Artist-in-Residence, Elana Arian (IP)
- 5:00 PM**  
Bar Mitzvah of Charlie Feldman (IP/V)
- 6:30 PM**  
Intimate House Concert with Artist-In-Residence, Elana Arian (IP)
- 7:00 PM**  
BETY 35 Lock-In (IP)
- 05 9:00 AM**  
Brotherhood Breakfast (IP)
- 10:00 AM**  
Brotherhood Board Meeting (IP)
- 9:30 AM**  
Masa (IP)
- 11:00 AM**  
The Alexandar Burnstein Memorial Concert with Artist-In-Residence, Elana Arian (IP)
- 07 9:00 AM**  
Braille Bindery Open (IP)
- 5:00 PM**  
Beginning Hebrew for Adults (IP)
- 08 6:00 PM**  
JGrand's Savvy Grandparents (IP)
- 7:00 PM**  
TBE Board Meeting (IP/V)
- 09 6:30 PM**  
Baking for the Jewish Soul Series: Noodle Kugel (IP)
- 10 7:00 PM**  
Shabbat Services (IP/V)
- 11 10:00 AM**  
Torah Study/Mourners Kaddish (V)
- 11:00 AM**  
Bat Mitzvah of Whitney Welbourne (IP/V)
- Mattan Torah (5th grade families) (IP)
- 12 10:30 AM**  
Minyan (V)
- 14 9:00 AM**  
Braille Bindery Open (IP)
- 5:00 PM**  
Beginning Hebrew for Adults (IP)
- 7:00 PM**  
Chai Mitzvah (IP)
- 15 6:00 PM**  
Intro to Judaism (V)
- 17 7:00 PM**  
Shabbat Services (IP/V)
- 18 10:00 AM**  
Torah Study/Mourners Kaddish (V)
- 7:00 PM**  
Fire and Ice - Annual Fundraiser (IP)
- 19 9:30 AM**  
Sisterhood Board Meeting (IP)
- 10:30 AM**  
Minyan (V)
- 21 9:00 AM**  
Braille Bindery Open (IP)
- 5:00 PM**  
Beginning Hebrew for Adults (IP)
- 23 6:45 PM**  
Bereavement Support Group (IP)
- 24 7:00 PM**  
Shabbat Services (IP/V)
- 25 10:00 AM**  
Torah Study/Mourners Kaddish (V)
- 11:00 AM**  
Bat Mitzvah of Eve Lewis (IP/V)
- 26 10:30 AM**  
Minyan (V)
- 27 Temple Building Closed - Memorial Day**
- 28 9:00 AM**  
Braille Bindery Open (IP)
- 4:00 PM**  
Knitting Crafts and Laughs (IP)
- 31 7:00 PM**  
Shabbat Services (IP/V)

# June

- 01 10:00 AM**  
Yachad Morning Service with Torah Study (IP)
- 11:00 AM**  
Bar Mitzvah of Spencer Levin (IP/V)
- 02 10:30 AM**  
Minyan (V)
- 03 10:30 AM**  
JGrand: Congrats, Coffee and Conversation! (IP)
- 04 9:00 AM**  
Braille Bindery Open (IP)
- 05 7:30 PM**  
Michigan Board of Cantors Concert at the Berman (IP)
- 07 7:30 AM**  
Coffee Connections (IP)
- 5:30 PM**  
Kid-Ish Club Tot Shabbat (IP)
- BETY Lock-In (IP)
- 6:00 PM**  
Summer Kickoff Music Shabbat Services (IP/V)
- 08 10:00 AM**  
Torah Study/Mourners Kaddish (V)
- 09 10:30 AM**  
Minyan (V)
- 6:30 PM**  
Make and Take: Shavout (IP)
- 11 9:00 AM**  
Braille Bindery Open (IP)
- 12 Temple Building Closed - Shavout**
- 6:00 PM**  
Intro to Judaism (V)
- 13 12:00 PM**  
Beth Elders Program (IP)
- 7:00 PM**  
TBE Annual Meeting (IP/V)
- 14 6:00 PM**  
Summer Shabbat with Yizkor (IP/V)
- 15 10:00 AM**  
Torah Study/Mourners Kaddish (V)
- 16 10:30 AM**  
Minyan (V)
- 18 9:00 AM**  
Braille Bindery Open (IP)
- 7:00 PM  
Chai Mitzvah (IP)
- 20 NOON**  
Bites & Books (IP/V)
- 21 6:00 PM**  
Summer Shabbat with Brotherhood Installation (IP/V)
- 7:00 PM**  
Brotherhood Installation Dinner (IP)
- 22 10:00 AM**  
Torah Study/Mourners Kaddish (V)
- 4:30 PM**  
Bar Mitzvah of Noah Sorser (IP/V)
- 23 10:30 AM**  
Minyan (V)
- 25 9:00 AM**  
Braille Bindery Open (IP)
- 4:00 PM**  
Knitting Crafts and Laughs (IP)
- 27 6:30 PM**  
Mary Einstein Shapero Memorial Lecture (IP/V)
- 6:45 PM**  
Bereavement Support Group (IP)
- 28 6:00 PM**  
Summer Shabbat (IP/V)
- 29 11:00 AM**  
Adult Bat Mitzvah of Stefani Goerlich (IP/V)
- 30 10:30 AM**  
Minyan (V)

# July

- July 1-5 Temple Building Closed - Mid-Year Break**
- 05 6:00 PM**  
Shabbat Services (IP/V)
- 06 10:00 AM**  
Torah Study/Mourners Kaddish (V)
- 07 10:30 AM**  
Minyan (V)
- 09 9:00 AM**  
Braille Bindery Open (IP)
- 12 6:00 PM**  
Summer Shabbat (IP/V)
- 7:00 PM**  
Congregational Dinner (IP)
- 13 10:00 AM**  
Torah Study/Mourners Kaddish (V)
- 14 10:30 AM**  
Minyan (V)
- 16 9:00 AM**  
Braille Bindery Open (IP)
- 7:00 PM**  
Chai Mitzvah (IP)
- 18 6:45 PM**  
Bereavement Support Group (IP)
- 19 6:00 PM**  
Summer Shabbat (IP/V)
- 20 10:00 AM**  
Torah Study/Mourners Kaddish (V)
- 21 10:30 AM**  
Minyan (V)
- 23 9:00 AM**  
Braille Bindery Open (IP)
- 24 6:30 PM**  
An Evening with Lance Parish (IP)
- 26 6:00 PM**  
Summer Shabbat (IP/V)
- 27 10:00 AM**  
Torah Study/Mourners Kaddish (V)
- 28 10:30 AM**  
Minyan (V)
- 30 9:00 AM**  
Braille Bindery Open (IP)



SCAN THE QR CODE

For upcoming program details and links or visit [tbeonline.org](http://tbeonline.org).

Mary Einstein Shapero Memorial Lecture series

## DETROIT JEWS ON THE MOVE: JEWISH MIGRATION IN THE 20TH CENTURY

THURSDAY, JUNE 27  
6:30 PM



Guest SPEAKER:  
**PROFESSOR DEBORAH DASH MOORE**  
*Frederick G. L. Huetwell Professor of History and*

*Professor of Judaic Studies at the University of Michigan*

*in-person or virtually*

Join us for our

# 174th ANNUAL MEETING

20245784

THURSDAY, JUNE 13

6:15 PM APPETIZERS  
7:00 PM ANNUAL MEETING





TEMPLE  
BETH EL

WWW.TBEONLINE.ORG

7400 TELEGRAPH ROAD  
BLOOMFIELD HILLS, MI 48301

Non-Profit Org.  
U.S. Postage  
**PAID**  
Southfield, MI  
Permit No. 498



## Seamless Events, Exceptional Catering

Temple Beth El is your one-stop destination for all rental needs, complemented by Platinum Dish's versatile catering offerings.



Meetings



Simchas



Guest Speakers



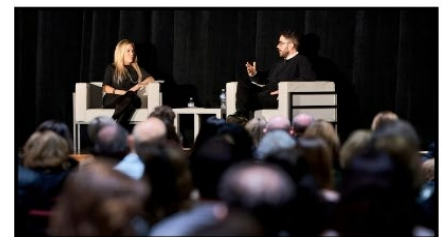
Shivas



High Holiday Meals



To-go Catering



Unlock your potential and rent our versatile space for your next event!



TEMPLE  
BETH EL

248.851.1100  
TBEONLINE.ORG



947.207.9957  
PLATINUMDISH.COM

For more information about event rentals, contact Evangela Whitehorn-Dove at [edove@tbeonline.org](mailto:edove@tbeonline.org) or 248-865-0624.

