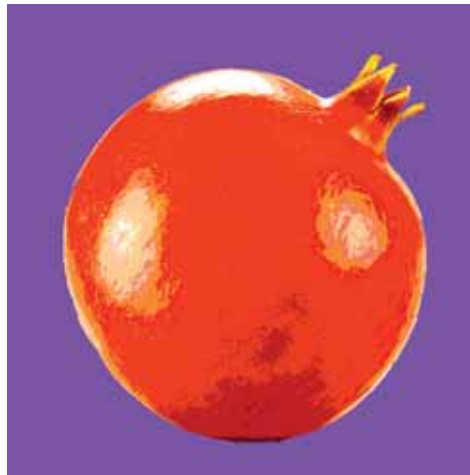


# <sup>the</sup>Bulletin



# YOUR TEMPLE *working* FOR YOU

*Temple Beth El has 167 years of history, nearly 1,100 member families, and a calendar packed with opportunities to connect, learn, celebrate, and volunteer. But just as important, our Temple is here to provide resources, guidance, rituals, and spiritual counseling for a range of special moments throughout your lifetime. Each month, this column will introduce you to another aspect of what Temple has to offer, with specifics about how to take advantage of your membership.*

## GRIEVING PROCESS

In Jewish tradition, the grieving process does not end after a funeral and sitting Shiva. The wisdom passed down to us recognizes that we move through various stages – the intensity of the first seven days, the 30-day *Shloshim* period, and then the slow attempt to regain our sense of normal life throughout the first year.

Near the end of that time, we return to the cemetery to install and bless a permanent marker at the gravesite. The brief but meaningful ceremony is called an “unveiling.” Whether you are more or less traditional, taking a few minutes with your family to unveil a loved one’s grave marker and share some vibrant memories can be a deeply emotional moment. Rabbi Miller, Rabbi Brudney, and Cantor Kalmowitz are prepared to help – contact Rachel Rudman (rrudman@tbeonline.org or 248.851.1100) at Temple, and she will take care of all the details.

# CLERGY COLUMN

## A MESSAGE FROM RABBI MILLER



The concept of Bar Mitzvah goes all the way back to the earliest days of Jewish practice. In the Talmud, a Jewish boy was deemed ready to take on adult responsibilities when he turned 13. By the Middle Ages, we find the start of an actual ceremony to mark the occasion. And it was only in the last century that most of the Jewish world has recognized that both boys and girls should be honored with this same important ritual.

Here at Temple, Bar and Bat Mitzvah ceremonies are vital life cycle moments that bring together family and friends for a true celebration of Jewish education, budding maturity, and the deep pride of leadership and independence. Each one is different, but the same underlying process and message unites all of us.

In October, Rachel Ann and I will have the joy of welcoming our son, Mori, into the community of Jewish adults (and I’m sure his brother, Abraham, will be watching carefully)! It is going to be emotional for us, and we will join so many

other Temple members who have felt the intense delight of watching a child take this important step toward adulthood ... even though it seems impossible that 13 years have passed so quickly!

Over the past four years, Temple Beth El has become more than a home for us, it has become our extended family. We hope that you will share our *simcha* by joining us for Mori’s Bar Mitzvah in the DeRoy Sanctuary on Saturday morning, October 28, at 10:30 am. L’dor Vador...may our community continue to grow from generation to generation!

Rabbi **MARK MILLER**  
mmiller@tbeonline.org

**“** We hope that you will share our *simcha* by joining us for Mori’s Bar Mitzvah in the DeRoy Sanctuary on Saturday morning, October 28.

# CONTENTS

TBE BULLETIN



» p.7

---

**5 JEWISH & AFRICAN AMERICAN CONNECTIONS**


---



---

**7 MURAL DEDICATION**


---



---

**10 SEAL OF SUSTAINABILITY**


---



---

**11 WE ARE PROUD**


---



---

**12-13 HIGH HOLIDAY SCHEDULE**


---



---

**16-21 FAMILY FUN / ECC / EDUCATION / YOUTH**


---



---

**22 LIFE CYCLES**



---



**SOLES 4 SOULS**  
WEARING OUT POVERTY®

**Used shoes = New hope**

**WOMEN OF TBE HAS TEAMED UP WITH SOLES 4 SOULS**

 **DONATE NOW  
THROUGH  
SEPTEMBER 15**



TEMPLE  
BETH EL

Temple Beth El, U.S.P.S. 075360 is published monthly.  
Temple Beth El, 7400 Telegraph Road, Bloomfield  
Hills MI. Periodicals postage paid at Pontiac,  
Michigan. Postmaster send address change to:  
Temple Beth El, 7400 Telegraph Road, Bloomfield  
Hills, MI 48301



# OUR SPIRIT IS GROWING



**Rachel Rudman** joins us as our new Director of Member Relations. She was our Program Director from 2014–16 before leaving to pursue rabbinical studies at the Jewish Theological Seminary in NYC. After a year of school, Rachel decided not to continue her studies and instead to return to Detroit to serve the Jewish community she loves and to be close to family.

Rachel holds a MA from NYU in Jewish Studies and a BA from the University of Michigan in Hebrew and Jewish Cultural Studies. She spent a year learning Torah and Talmud at Pardes Institute for Jewish Studies in Jerusalem, and a summer at Mechon Hadar in NYC. During her year at JTS, Rachel made weekly visits to The Jewish Home, a nursing home on the Upper West Side, where she engaged in meaningful conversation with residents about life, death, and faith.

In her new role at Temple, Rachel will be overseeing pastoral care. She'll work to ensure that all members are receiving support and comfort during life's ups and downs. Whether it's organizing a visit from our clergy, a call from our Caring Community, or shiva led by our Shiva Corps, Rachel will make sure you are connected and receiving the care you deserve. She looks forward to hearing what's going on in your life.

To learn more about pastoral care at TBE, contact Rachel Rudman at 248.851.1100 ext 3179 or [rudman@tbeonline.org](mailto:rudman@tbeonline.org).



**Laura Williams** is no stranger to Temple Beth El and the Metro Detroit community. Laura is an alumna of TBE, Michigan State University, MSU Hillel, and Tamarack Camps. She graduated MSU with a Bachelor of Arts in Interdisciplinary Studies in Social Science; Community Governance and Advocacy with a History cognate and a Jewish Studies minor. Laura was awarded the College of Social

Science Dean's Assistantship and won a first-place award at the Undergraduate Research and Art Forum for her research on Reform Judaism's relationship with Zionism using Temple Beth El as the unique case study. Laura worked as a department aide for the Michigan State University Archives and Historical Collections and was selected as the commencement speaker for the College of Social Science Class of 2015 for her speech that was inspired by the work she did in the archives.

Laura is currently a 4th grade teacher in the Temple Beth El Religious School. She is continuing her studies toward a Master's in Library Information Science and Archival Administration at Wayne State University. Laura is excited to be part of the Temple Beth El staff in the new position of Curator. She is eager to bring her passion to both The Prentis Memorial Library and Rabbi Leo M. Franklin Archives and looks forward to a shared community of learning at Temple Beth El.

# TRADITIONS & TRANSITIONS

## BUBBIE IS RIGHT

Growing up, the High Holidays were my favorite time of year. In addition to getting off what seemed like a full month of school, my Bubbie took us (sisters and cousins) shopping. My sisters, cousins, and I came to love her phrase: "new year-new clothes." We started off at Cinderella's Castle, making sure each of us had three outfits (two for Rosh HaShanah and one for Yom Kippur) that were not too revealing: no low-cut tops or short skirts allowed. Once we outgrew Cinderella's, we moved on to Guys-N-Gals.

As we matured, Bubbie always insisted on dressing "shul appropriate." It didn't matter what the sales associates said about clothing being in fashion; Bubbie was treating so we wore what she approved of and said looked good (looking back – she was always right!). As we continued to grow, the yearly outings transitioned to stores such as Nordstrom, Neiman Marcus, and Saks Fifth Avenue. We girls cherished our time with her. What was once an outing about clothing, turned in to precious time spent with our Bubs.

Looking back on these trips, I now realize they reflected transitions: passages into not only a new Jewish year but also a new school year. On our outings, we spoke about the new opportunities that awaited us in the year ahead, how we could grow, change, and be better people - to others and ourselves. These shopping trips were mini reflection sessions...my Bubbie is so smart!



**DONATE NOW  
THROUGH  
SEPTEMBER 15**



*On our outings, we spoke about the new opportunities which awaited us in the year ahead, how we could grow, change, and be better people – to others and ourselves.*

The theme of transitions is also the focus of the High Holiday Season here at Temple. We are offering a truly unique program before our Selichot Service on Saturday, September 16, that will allow for deep introspection prior to the new year, with expert life coach Laura Rose-Lewis. Additional learning opportunities include our High Holiday learning workshops on Thursday evening September 7, that will help us prepare for the High Holiday services.

We all go through transitions. This year I will be transitioning into the new role of “Mom.” As I look ahead to this life changing event, I have spent much time thinking about my own mother and the practices and actions I want to absorb. I am also extremely excited for the day when my Bubbie will take my daughter shopping for her own High Holiday clothing!

During these upcoming days, I urge you to think about what is going on in your own life at this time. What are a few things you can do differently this year when starting with a clean slate and fresh start? My wish for you and your family is a meaningful High Holiday season, full of community, health, happiness and smooth transitions.

*Danielle Gordon*

**DANIELLE GORDON** Program Director  
dgordon@tbeonline.org



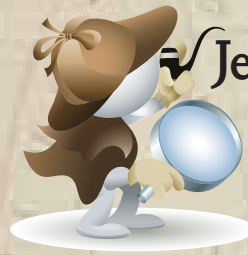
**SOLES 4 SOULS**  
WEARING OUT POVERTY

**Used shoes = New hope**

**WOMEN OF TBE HAS TEAMED UP WITH SOLES 4 SOULS**

Donate your gently worn shoes to Temple Beth El, now through September 15, and help create sustainable jobs in developing nations.

For more information, contact Cindy Bolokofsky at  
bolokofskyc@gmail.com.



## Jewish History Detectives Lecture SERIES

### INTERWOVEN HISTORIES: CONNECTIONS BETWEEN JEWISH & AFRICAN AMERICAN HISTORY IN CIVIL WAR ERA DETROIT

**TUESDAY, OCTOBER 24  
7:00 PM**

Using the writings of John Brown, Frederick Douglass, and William Lambert, historian Jamon Jordan has uncovered the connections between Detroit's Jewish community and the Underground Railroad.



Jordan's research has shown that prominent men such as Isaac Cozens, E.S. Heineman, Adolph Sloman and Dr. Leibman Adler were ALL important agents along the Northern escape route during the Civil War.

As an educator and writer, Jordan has spent decades researching Black history. In 2013, he founded Black Scroll Network History and Tours that specializes in engaging tour attendees, first hand, with the rich and important narratives of local Black history. For more information on tours, Jordan can be contacted at BlackScrollNetwork@gmail.com.

**JOIN US FOR THIS TIMELY PRESENTATION.**

\$5.00 DONATION

**RESERVATIONS APPRECIATED:**  
248.865.0628 or farchives@tbeonline.org.

*Sponsored by Dr. Robert & Joan M. Jampel*



Co-sponsored by the Jewish Historical Society of Michigan

# TBE UPCOMING PROGRAMS/EVENTS

SEPT – OCT

## SEPTEMBER

**07 HIGH HOLIDAY LEARNING WORKSHOPS**  
THURSDAY, SEPTEMBER 7  
7:00 PM

Rabbi Miller, Rabbi Brudney, Cantor Kalmowitz, and Debbie Morosohk will each offer an interactive session to deepen our understanding of Rosh HaShanah and Yom Kippur. New members are invited to attend a pre-program get-together at 6:15 pm.

For more info, contact Danielle at [dgordon@tbeonline.org](mailto:dgordon@tbeonline.org) or 248.851.1100.



**10 TBE SUNDAY MORNING BREAKFAST**  
9 AM SUNDAYS BEGINNING  
SEPTEMBER 10

Enjoy a delicious breakfast prepared and served by Brotherhood members in Handleman Hall every Sunday while Religious School is in session.

Full Breakfast \$3 Bagel and Beverage \$2



**10 TEMPLE-WIDE PICNIC**  
SUNDAY, SEPTEMBER 10  
11:30 AM – 1:30 PM  
FREE OF CHARGE

Food, music and games for the entire family at TBE's Temple-wide picnic. Enjoy inflatables, balloon art, and face painting.

For more info or to RSVP, contact Danielle at [dgordon@tbeonline.org](mailto:dgordon@tbeonline.org) or 248.851.1100.



**16 SELICHOT**  
SATURDAY, SEPTEMBER 16  
7:00 PM

Our High Holidays provide an opportunity for us to create the New Year we want – but only when we utilize this transition wisely. Join us for a very special program with Laura Rose-Lewis, an expert coach in *Thriving through Transition*, as she and Rabbi Miller help us prepare to achieve our highest goals.

**9:00 PM Dessert Reception**  
**9:30 PM Selichot Service**

For more info, contact Danielle at [dgordon@tbeonline.org](mailto:dgordon@tbeonline.org) or 248.851.1100.

## OCTOBER



**04 SUSHI IN THE SUKKAH**  
WEDNESDAY, OCTOBER 4  
7:00 PM

Enjoy a relaxed evening of learning in the Sukkah with wine, sushi and Temple Beth El Clergy.

For more info or to RSVP, contact Danielle at [dgordon@tbeonline.org](mailto:dgordon@tbeonline.org) or 248.851.1100.



**06 MUSIC SHABBAT**  
FRIDAY, OCTOBER 6  
7:00 PM

High energy, spiritual, and thought-provoking service. Special oneg in the Sukkah.

For more info or to RSVP, contact Danielle at [dgordon@tbeonline.org](mailto:dgordon@tbeonline.org) or 248.851.1100.



OCTOBER



08

**FAMILY SUKKOT PROGRAM**

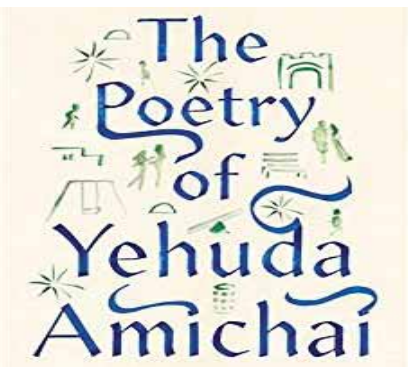
SUNDAY, OCTOBER 8

NOON

FREE OF CHARGE

Family-friendly afternoon in the Sukkah. Lunch, stories, games and more. Kid-ish Club meet up at 11:00 AM.

For more info or to RSVP, contact Danielle at [dgordon@tbeonline.org](mailto:dgordon@tbeonline.org) or 248.851.1100.



14

**NOSH & KNOWLEDGE WITH RABBI BRUDNEY**

SATURDAY, OCTOBER 14

12:30 PM

Join the Women of Temple Beth El for lunch and the poetry of Yehuda Amichai--famed 20th Century Israeli poet.

For more info or to RSVP, contact Nancy Fortier at 248.495.5013.

**SEE PAGE 12 & 13 FOR HIGH HOLIDAY SCHEDULE AND PROGRAMMING.**



**Created for us - painted by us!**



**TEMPLE BETH EL'S MURAL DEDICATION**

-and-

**SHABBAT IN THE ROUND**

**FRIDAY, SEPTEMBER 8**

**6:30 PM**

**WINE & CHEESE PRE-NEG AND MURAL DEDICATION**

**7:00 PM**

**SHABBAT IN THE ROUND**

A participatory service using rounds as our guide - in shaping our space, in sharing our music, and in bringing each other into a circle of ruach (spirit) and prayer.

For more info or to RSVP, contact Danielle at [dgordon@tbeonline.org](mailto:dgordon@tbeonline.org) or 248.851.1100.

# BITES & BOOKS

2017/2018 (5778)

**Bites & Books meets 5 times over the course of the year. We hold each book discussion twice in one day.**

**10:00 AM / 7:00 PM  
SERIES \$25. DROP-IN \$10.**

For information, contact Debbie Morosohk,  
Director of Education at  
dmorosohk@tbeonline.org or 248.325.9708.

## THURSDAY, OCTOBER 19

***Waking Lions*** by Ayelet Gundar-Goshen

A gripping, suspenseful, and morally devastating drama from a remarkable young author on the rise.

Facilitated by Deborah Morosohk, RJE,  
Director of Education

## THURSDAY, NOVEMBER 30

***Norwegian by Night*** by Derek B. Miller

A Jewish widower transplanted to Norway becomes party to a hate crime.

Facilitated by Dr. Marilyn Gans Schelberg,  
Judaic Educator

## THURSDAY, JANUARY 18

***Rabbi Akiva: Sage of the Talmud***  
by Barry W. Holtz

This book is a compelling account of the life and teachings of a founder of rabbinic Judaism and a hero of Jewish history.

Facilitated by Rabbi Mark Miller

## TUESDAY, APRIL 10

***Tutti's Promise*** by K. Heidi Fishman

This is a true story of what one family endured under the Nazis, told by Tutti's daughter.

Facilitated by K. Heidi Fishman, Author

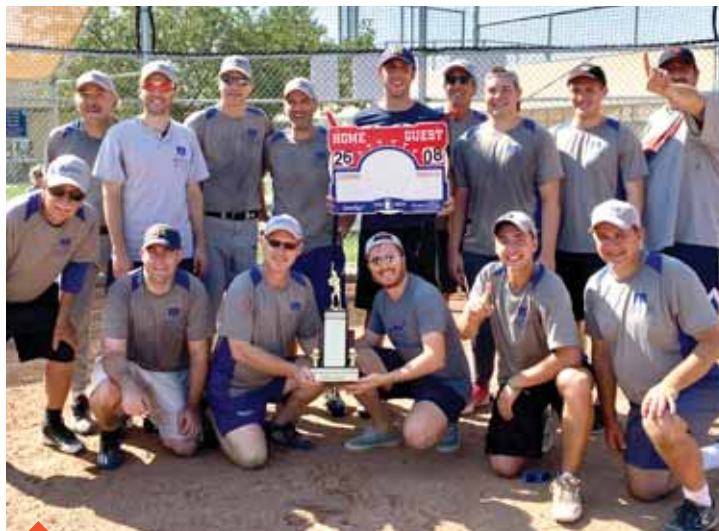
## THURSDAY, JUNE 7

***Those Who Save Us*** by Jenna Blum

A passionate, doomed love story, an evocation of life during the war.

Facilitated by Rabbi Megan Brudney

## MAZEL TOV TO TBE'S SOFTBALL TEAM, KOUFAX DIVISION CHAMPIONSHIP WINNERS IN THE INTER-CONGREGATIONAL MEN'S CLUB SOFTBALL LEAGUE!



L - R back row: Mark Goldberg, Andy Goldberg, Brian Gurwin, Brad Steel, Matthew Broder, Andy Broder, Michael Kindred, Ari Hollander, Matthew Chasnick.  
L - R front row: Jerry Beigler, Michael Rubin, Jeff Hollander, Billy Wiseman, Billy Weinger, Lenny Beigler. Not pictured: Ben Cole, Marvin Rubin.

While the TBE softball team were winning the Inter-congregational Softball Championship on Sunday, August 20, these avid Temple cyclists took part in the JHS J-Cycle ride through Northwest Detroit and Oak Park.





## GIRLS NIGHT OUT WITH THE WOMEN OF TBE!

Thursday, October 12

**DINNER |** LITTLE DADDY'S IN FARMINGTON HILLS  
**SHOW |** "CALENDAR GIRLS" AT THE FARMINGTON PLAYERS



This feel-good comedy is based on the true story of a group of working-class British housewives who became overnight celebrities by posing for an "alternative" calendar to raise money for a cancer hospital. Follow the adventures of best friends Chris and Annie as they convince their local women's group to bare more than their souls for a good cause.

RSVP by September 10 to Karen Lowen at 248.444.8329

## "LADY DAY AT EMERSON'S BAR AND GRILL"

Saturday, October 14 @ 5:00 PM



Back again, Brotherhood sponsored TBE Evening at the JET. *Lady Day at Emerson's Bar and Grill*, written by Lanie Robertson, is a musical based on the life and music of Billie Holiday. Following the performance, we will reserve a room at G. Georges Restaurant (the old Honey Tree) for those who would like to gather.

Tickets \$27 (\$44 regular ticket price). First come, first served basis. Purchase by October 8.

To purchase tickets, contact Julian Prince at BroPrez@comcast.net. Checks payable to TBE Brotherhood.

## WOMEN OF TBE ANNUAL MEMBERSHIP EVENT

Tuesday, October 17 @ 7:00 PM



The Women of Temple Beth El cordially invite you to join other Women of TBE as our member, Sue Goldsmith, instructs us in the art of floral arranging.

Dessert, coffee and tea will be served by Cutting Edge Cuisine.

Join us for a chance to win gifts, meet new members, and say hi to old friends.

The event is free for members (in good standing.)

Not a member yet, no problem – just pay your membership dues that evening. Friends are welcome for a fee of \$10.00.

For more info or to RSVP, contact Rochelle Nelson at 248.210.8490 or rochnels@aol.com.

REGISTER ONLINE TODAY AT [WWW.TBEONLINE.ORG](http://WWW.TBEONLINE.ORG)

## WOMEN OF TBE ANNUAL WINE & CHOCOLATE TASTING EVENT

**SATURDAY  
NOV  
18  
7:00 PM**

**\$36 Per  
Person**

**Silent  
Auction**

For more information, contact  
 Elaine Schonberger at  
[eschonberger@comcast.net](mailto:eschonberger@comcast.net)

**REGISTER ONLINE TODAY AT  
 WWW.TBEONLINE.ORG**

*Proceeds from this event will support our  
 Temple and outreach efforts.*

# SUSTAINABILITY

## 5777 TO 5778

It is nearing the end of August as I write this. A time of transition. A doorway from one season to the next, from one school year to the next, and, soon, from 5777 to 5778. My daughter will soon turn six, and, just days later, will begin first grade at a new school. It is sunny and warm, but I sense the fall is coming. Things are still rather quiet as you look around TBE, but just below the surface, we are all busily preparing for the High Holy Days, as well as the beginning of school and the start of our programming year.

We each deal with transitions differently. We may wait passively to see what happens, or we may try to actively impact the direction we will move. I think that each of those responses can be helpful at different times. Imagine that you are standing in the ocean and a large wave is coming. If you try to stand your ground and not move, the impact will be strong and painful. But if you allow the wave to push you along with it, your lack of resistance is rewarded by a smoother and more enjoyable ride. However, in some cases, actively participating in the change is imperative. After all, a transitional, or liminal, moment is often one where great change is possible: when we are in a doorway of some sort, and could go either direction. Imagine, if you can, the world is in disarray. Disease, war, and hate seem to be everywhere. We are more divisive in our politics and more self-righteous in our opinions than I have seen in my lifetime. In this moment, to ride the wave of despair could be disastrous. We must each do our part to help move the world to a better place. "It is not for you to complete the task, but neither are you free to desist from it." Pirkei Avot 2:21

One way that we at Temple Beth El are working to repair the world is through

our work with Hazon, an organization that "works to create a healthier and more sustainable Jewish community, and a healthier and more sustainable world for all." As I wrote a few months ago, we are in the second cohort of their Seal of Sustainability, and we have committed to making progress in our recycling program, our energy efficiency, and our gardening efforts. Our committee, made up of board members Jim Rice and Steve Tarnowsky, Jim Marks, and Cindy Bolokofsky, and with assistance from Executive Director Kim Raznik, Program Director Danielle Gordon, and Building Superintendent Al Friant, has begun moving us in the right direction on all of these fronts. Under Al's direction, the maintenance team has continued replacing incandescent light bulbs with LED lights all over the building. In the religious school garden, we have added tall beds, so that people of all ages and abilities can work together. We now have labels on our trash and recycling bins, to begin our goal of educating the staff and members in effective recycling. Please look for the blue bins to recycle plastic (don't throw your plastic water bottles away!) and green bins to recycle paper and cardboard. We will soon have a large bin in the foyer as well, to accommodate recycling in our wonderful communal space.



In addition to our work on the Seal of Sustainability, this month we hosted a Hazon program featuring Dr. Kathy Erlich, who spoke with a passionate group of young moms about detoxifying our food and our environment for our children. We have a group, led by ECC Director Susie Weiner, which has been consistently participating in Slow Roll Detroit, a bike ride for all ages on Mondays throughout the summer. We had a table at Hazon's Second Annual Jewish Food Festival on Sunday, August 27th, and we hope that you stopped by for some fair trade chocolate! These initiatives continue to increase the health and connections within our congregation.

Let us continue this process of building a healthier and more sustainable congregation, leading to a more cohesive community, and a better world. Let us meet our challenges with determination and hear the shofar as a call to action. Shanah tovah um'tukah. On behalf of my husband, Carey, and my daughter, Ilana, I wish you a good and sweet New Year.

*Rachel D. Kalmowitz*

Cantor **RACHEL** GOTTLIEB KALMOWITZ  
rgk@tbeonline.org

# WE ARE PROUD

## COMMUNITY



### SAMANTHA GOLDSMITH

Samantha Goldsmith, daughter of Sue & Jeff Goldsmith, granddaughter of Lee & Sandy Marks, was accepted to, and participated in, the Machon Kaplan program of the Religious Action Center of Reform Judaism in Washington DC this summer. Machon Kaplan is a study-internship program that engages students in critical social justice issues from Jewish, academic, and practical viewpoints and connects the students with public policy organizations. Sammi interned with the NAACP, whose goal is to ensure the political, educational, social, and economic equality of rights of all persons and to eliminate race-based discrimination.

Sammi researched civilian oversight of police misconduct and participated in the NAACP's annual convention in Baltimore, MD. The TBE family is so proud of all of Samantha's accomplishments, Mazel Tov!



### SCOTT REMER

Scott Remer, grandson of Earl and Jackie Remer, recieved a Master of Philosophy in Political Thought and Intellectual History from Cambridge University in England. In this year's Scripps National Spelling Bee, he tutored via the internet the spellers who finished in 2nd, 4th, 7th, and 12th places.

A 292-page book written by Scott when he was a 10th grader entitled *Words of Wisdom: Keys to Success in the Scripps National Spelling Bee* has sold over 3,000 copies. He placed 4th in the Bee of 2008.



### LILLY EPSTEIN STOTLAND

Mazel Tov to Lilly Stotland, President of Vesco Oil Corp., on being one of the eight selected by *dbusiness* for "2017 Powered by Women." This amazing achievement recognizes female business leaders who are driving profits, adding employees, and opening new opportunities in the region.

Temple Beth El is proud of all of your amazing achievements!



### CAMERON RADIN

We are proud of Temple Teen and BETY member Cameron Radin! This past year, Cameron and several of his friends, fellow TBE teens Donovan Brown, Andrew Frenkel, Ryan Goodman, and Tommy Sherman, were the founding members of a new BBYO chapter.

Cameron was president in the young chapter's first year and they were able to recruit more teens to this successful endeavor. For his efforts, Cameron was awarded the BBYO/AZA President of the Year.

SHARE YOUR SIMCHAS  
WITH YOUR TBE FAMILY

**FAMILY ENGAGEMENTS. MARRIAGES. BIRTHS. SPECIAL ACCOMPLISHMENTS.**  
If you or a family member would like us to share your good news in the TBE Bulletin, contact Lindsey at [lfowxwagner@tbeonline.org](mailto:lfowxwagner@tbeonline.org) or 248.851.1100.





# TEMPLE BETH EL

## PREPARING FOR THE HIGH HOLIDAYS

As Rosh HaShanah and Yom Kippur approach, our tradition teaches that these High Holidays are so important that one cannot simply show up and reap all the benefits they have to offer. It takes a serious process of introspection and reflection to enter the New Year filled with hope, promise, and new understanding. Here at Temple Beth El, we are dedicated to making the entire High Holiday season as meaningful as possible for every Temple member. We hope you will take advantage of some or all of the opportunities we have prepared for a deeply spiritual experience.

## TWO MEANINGFUL OPPORTUNITIES TO PREPARE FOR THE HIGH HOLIDAYS AND ENRICH YOUR NEW YEAR!

### LEARNING WORKSHOPS

**THURSDAY, SEPTEMBER 7 • 7:00 PM**

Rabbi Miller, Rabbi Brudney, Cantor Kalmowitz, and Debbie Morosohk will each offer an interactive session to deepen our understanding of Rosh HaShanah and Yom Kippur. New members are invited to attend a pre-program get-together at 6:15 pm. We hope you will join us.

### SELICHOT

**SATURDAY, SEPTEMBER 16 • 7:00 PM**

Our High Holidays provide an opportunity for us to create the New Year we want – but only when we utilize this transition wisely. Join us for a very special program with Laura Rose-Lewis, an expert coach in *Thriving through Transition*, as she and Rabbi Miller help us prepare to achieve our highest goals.

**9:00 PM Dessert Reception**

**9:30 PM Selichot Service in the chapel.**

*For more information, contact Danielle at [dgordon@tbeonline.org](mailto:dgordon@tbeonline.org), 248.851.1100 or visit [www.tbeonline.org](http://www.tbeonline.org).*

### SELICHOT

**SATURDAY, SEPTEMBER 16**

7:00 PM

Program & Dessert Reception

9:30 PM

Service

### EREV ROSH HASHANAH

**WEDNESDAY, SEPTEMBER 20**

8:00 PM

Evening Service

### ROSH HASHANAH

**THURSDAY, SEPTEMBER 21**

9:15 – 9:45 AM

Younger Children's Service  
Sanctuary (ages 0–6)

9:15 – 10:00 AM

Older Children's Service  
Chapel (ages 7–12)

9:45 – 10:15 AM

Donuts & cider in Handleman Hall  
for families.

10:30 AM

Morning Service • Sanctuary \*

3:00 PM

Teen Experience • Franklin Cider Mill

3:30 PM

Tashlich • Franklin Cider Mill

### KOL NIDRE

**FRIDAY, SEPTEMBER 29**

8:00 PM

Evening Service

### FOR MORE HHD INFORMATION

### USHER CORPS VOLUNTEERS NEEDED

*Temple Beth El is a warm and welcoming place, where our volunteers make a difference!*

As the High Holidays approach, the Usher Corps is seeking additional volunteers to greet and seat congregants and guests on holidays, at special Temple events, and weekly Shabbat services. Become part of this vital group who put a "face" on Temple at every service. For more information about joining the Corps, please contact Rochelle Nelson at 248.542.8490 or [rochnels@aol.com](mailto:rochnels@aol.com).



# L HIGH HOLIDAYS

## YOM KIPPUR

**SATURDAY, SEPTEMBER 30**

9:15 – 9:45 AM Younger Children's Service • Sanctuary (ages 0-6)

9:15 – 10:00 AM Older Children's Service • Chapel (ages 7-12)

9:45 – 10:15 AM Craft project in Handleman Hall for families.

10:30 AM Morning Service • Sanctuary \*

Teen Experience following services in Benton's Place.

12:45 PM Learning w Rabbi Brudney  
Come for a stimulating and interactive discussion on the ancient wisdom of our Day of Atonement.

1:30 PM Stories of Survival: A personal narrative from Temple members.  
Yom Kippur is a time to reflect on the eternal struggle between life and death. Our tradition demands that we "choose life!" You won't want to miss this unique opportunity to listen as Temple members share their inspiring stories of survival ... from the Holocaust to the present day. Presented in conjunction with the Temple Brotherhood.

2:15 PM Reflections: A Musical Interlude

3:30 PM Afternoon Service • Sanctuary

4:30 PM Yizkor & Concluding Service • Sanctuary

6:00 PM Break the Fast & Havdalah • Front Patio

**\* Babysitting available – RSVP required.**

Babysitting during Morning Services will be available (starting at 9:45 AM) for younger children in the ECC Wing and for older children in Benton's Place. Parents must drop off and sign in their children—children are not allowed to sign in/out themselves. RSVP's are required. Walk-ins will be accommodated on a first come, first served basis.

**Register online at [tbeonline.org/hhd-babysitting-registration](http://tbeonline.org/hhd-babysitting-registration)**

**VISIT US AT [WWW.TBEONLINE.ORG](http://WWW.TBEONLINE.ORG)**

*As the sun sets on Yom Kippur, and when services end, join your Temple family to symbolically break the fast with a glass of juice and a slice of cake.*

*Sponsored by Denny Brown.*



## TAKE THE TIME TO HELP FEED THE HUNGRY PARTICIPATE IN TBE'S "CAN-DEMONIUM"

Temple Beth El will again join area congregations in answering the needs of the hungry in our Jewish community by participating in Yad Ezra's annual Kol Nidre Food Drive. You can take part with the gift of canned goods and/or a cash donation. Yad Ezra food bags and donation envelopes will be distributed on Rosh HaShanah.

Please fill your food bags with non-perishable, preferably kosher, items. Suggested items include canned fruits and vegetables, coffee, oatmeal, peanut butter, rice, sugar, tea bags, tuna and pasta. Bring your bags to Temple on Yom Kippur morning and drop them off at our "Can-demonium" vans. Cash donations may be mailed to Yad Ezra in the envelopes provided or brought to Temple on Yom Kippur morning and deposited in the specially-marked Yad Ezra containers. However you choose to participate in this worthy project, your donations will be deeply appreciated by those in need in our Jewish community. For more information contact Danielle at [dgordon@tbeonline.org](mailto:dgordon@tbeonline.org) or 248.851.1100.

## MEMORIAL BOOK

Yom Kippur is one of the four times each year when we gather at a Yizkor Service to memorialize the family and friends who were such an integral part of our lives. We recall the joy they brought us, the lessons they taught, and the values they imparted. It is also traditional to honor these loved ones by entering their names in a Memorial Book that will be distributed at our Yizkor Service on the afternoon of Saturday, September 30.

Memorial Book envelopes have been mailed to our Temple families. Please use this envelope to list those whom you wish to remember. A minimum donation of \$18 per name is requested. Because the preparation of the Memorial Book requires considerable time, we ask that you return your envelope by Tuesday, September 5. For more information, you may contact Danielle at [dgordon@tbeonline.org](mailto:dgordon@tbeonline.org) or 248.851.1100.

## HIGH HOLIDAY ANGELS

Each year we count on the support of many Temple members, whose generosity allows us to elevate our Rosh HaShanah and Yom Kippur experience. The grandeur of our majestic Temple, beautiful music, inspiring worship, challenging ideas ... we strive to create spiritual moments that inspire and impact all who participate. We hope you will consider becoming an "Angel" with a contribution of \$250 or more. It is greatly appreciated, and will go a long way helping us to create a meaningful New Year. If you have any questions, please contact Kim at [kraznik@tbeonline.org](mailto:kraznik@tbeonline.org) or 248.865.0636.



## Did You Know?

Tashlich is a ceremony, on the afternoon of Rosh HaShanah, in which Jews go to a body of water, such as a river, stream, or ocean, to cast away their sins by symbolically tossing bread into the water. This inspires us to remember our actions, right our wrongs, and refocus ourselves for the New Year.





# TBE'S SHABBAT IN CHARLEVOIX

07.28.17







# HAVDALAH AT JARC

IN PARTNERSHIP WITH JARC &  
THE DAVID-HORODOKER ORGANIZATION

07.12.17





## 2017-18 SCHEDULE



*Creating a welcoming Jewish community  
for families with young children, ages 0-6.*

SEPT 10	11:30 AM	Temple-wide Picnic
OCT 8	11:00 AM	Family Sukkot Program
OCT 20-22		ECC Family Camp (Tamarack)
OCT 29	12:30 PM	Apple Picking
NOV 11	9:30 AM	Tot Shabbat
NOV 17	5:30 PM	Small Fri Shabbat
DEC 2	9:30 AM	Tot Shabbat
DEC 15	6:00 PM	Family Hanukkah Shabbat
JAN 13	9:30 AM	Tot Shabbat
JAN 26	5:30 PM	Small Fri Shabbat
FEB 10	9:30 AM	Tot Shabbat
MAR 2	5:30 PM	Small Fri Shabbat (Purim Themed)
MAR 24	9:30 AM	Tot Shabbat
APR 27	5:30 PM	Small Fri Shabbat
MAY 12	9:30 AM	Tot Shabbat
JUNE 1	5:30 PM	Summer Kick-off

For more information, contact Rabbi Megan Brudney  
at [mbrudney@tbeonline.org](mailto:mbrudney@tbeonline.org) or 248.851.1100.



# WE HAD A BLAST AT KID-ISH CLUB'S MOANA'S LUAU

## LEIS & CHALLAH

Temple Beth El's Kid-ish Club has enjoyed meeting up all over the area this summer—and on Friday, August 4, attended an extra special Shabbat Moana's Luau at the Troy Aquatic Center. Even though it was an unusually chilly August night, we matched our leis to our sweatshirts and enjoyed Shabbat songs, grape juice, challah, and pizza together before boldly plunging into the pool. Young and less young alike participated in fun activities like the limbo and a hula hoop contest...and even getting to meet the great Moana herself!



If you know of a community event that would be a great fit for our Kid-ish Club families or are interested in joining us, please reach out to me at any time. We love having fun together any day of the week!

*Megan Brudney*  
Rabbi **MEGAN BRUDNEY**  
[mbrudney@tbeonline.org](mailto:mbrudney@tbeonline.org)



**SUNDAY  
SEPT  
10**  
11:30 AM  
-1:30 PM



## TEMPLE-WIDE PICNIC

**FREE OF CHARGE**

Food, music and games for the entire family at TBE's Temple-wide picnic. Enjoy inflatables, balloon art, and face painting. For more info or to RSVP, contact Danielle at [dgordon@tbeonline.org](mailto:dgordon@tbeonline.org) or 248.851.1100.

**SUNDAY  
SEPT  
17**  
NOON-3 PM



## CAMP HERMELIN CALLING ALL CAMPERs

Meet at TBE and take a shuttle to the venue. Visit our booth and design your very own pet rock. Enter the raffle for a chance to win a one week session at Camp Beth El.

**WED  
SEPT  
13**  
9:15-11:30 AM



## MELTON PEP

(PARENT EDUCATION PROGRAM)  
ONGOING - WEDNESDAYS

Class begins Wednesday, September 13 from 9:15 – 11:30 AM. For parents of young children – newborn thru 8th grade. The two-year curriculum includes classes on Jewish holidays, life cycles, Jewish thoughts and beliefs, ethics, and Jewish history. Strengthen your understanding of Judaism in order to nurture your child's growing identity. \$395 per year, monthly payment and scholarships available. To sign up or for more information call 248.205.2557 or [jewishdetroit.org/melton](http://jewishdetroit.org/melton).

**SUNDAY  
OCT  
8**  
NOON



## FAMILY SUKKOT PROGRAM

**FREE OF CHARGE**

Family-friendly afternoon in the sukkah. Lunch, stories, games and more. Kid-ish Club meet up @ 11:00 AM. For more info or to RSVP, contact Danielle at [dgordon@tbeonline.org](mailto:dgordon@tbeonline.org) or 248.851.1100.

## 2017-18 SCHEDULE

## K-5 K'HILAH CLUB

*A community of families with elementary-aged kids.*

SEPT 10	11:30 AM	Temple-wide Picnic
OCT 20	6:00 PM	Friday Night Lights
NOV 19	NOON	Mitzvah Day
DEC 15	6:00 PM	Family Hanukkah Shabbat
FEB 9	6:00 PM	Friday Night Lights
MAR 18	5:00 PM	Movie Night
MAY 6	NOON	Mitzvah Day
JUNE 1	5:30 PM	Summer Kick-off

For more information, contact Cantor Rachel at [rgk@tbeonline.org](mailto:rgk@tbeonline.org) or 248.851.1100.

## DO YOU HAVE CHILDREN WHO ARE IN ELEMENTARY SCHOOL?

### WE WELCOME YOU TO PARTICIPATE IN OUR NEW GROUP: K-5 K'HILAH CLUB!

K'hilah means Community, and our goal is just that – to create a community of families who are connected to each other, to our clergy, and to our congregation. Join us October 20 for our first Friday Night Lights, which will be a time to celebrate Shabbat at temple in a relaxed and family-friendly environment. On Mitzvah Days, we will model and embody Tikkun Olam, repairing the world. In addition, we will join Kid-ish Club and the entire temple community for events such as the Temple-wide picnic, Family Hanukkah Shabbat, and the Summer Kick-off.

For more information, contact Cantor Rachel at [rgk@tbeonline.org](mailto:rgk@tbeonline.org) or 248.851.1100.





## 2017-18 SCHEDULE



### MEET YOUR TEACHER

**TUESDAY, SEPTEMBER 5**

Bring your child to meet their teacher any time between NOON – 1:30 PM.

### FIRST DAY OF SCHOOL

**WEDNESDAY, SEPTEMBER 6**

9:00 AM – 12:30 PM (Thursday & Friday follow this same schedule)

\*Early Child Care available starting on September 6, beginning at 7 AM. If interested, contact ECC Director, Susie Weiner at 248.851.1100.

### FIRST FULL DAY OF SCHOOL WITH ENRICHMENTS

**MONDAY, SEPTEMBER 11**

9:00 AM – 3:00 PM

### CURRICULUM NIGHT

**WEDNESDAY, SEPTEMBER 13**

6:30 – 7:30 PM. Hear from your child's teacher, learn about their classroom and curriculum for the year.

### TEMPLE TOTS

**FRIDAY, SEPTEMBER 15**

9:15 – 10:45 AM. Children 1 to 2 years of age. Join ECC Director, Susie Weiner, and engage in art, music, open-ended playtime and musical Shabbat celebration each week. For more information, contact Jen Goren at 248.851.1100 or go to [tbeonline.org](http://tbeonline.org).

### SHABBAT IN THE SUKKAH

**FRIDAY, OCTOBER 6**

Join your TBE family and friends for Shabbat in the Sukkah. Time will be your child's regular class Shabbat time.



## NEW THIS YEAR FOR SUKKOT 2017 - 5778

**Sukkot comes to your door.**

Here is an opportunity to purchase a "soft" Lulav and Etrog set for your child. During our Shabbat in the Sukkah, in the ECC classrooms all week, as well as in your sukkah at home, your child can use this set to experience this friendly, fall harvest Jewish holiday. A booklet with the story of Sukkot and the blessings over the Lulav and Etrog will be included with your purchase. **\$18**

For more info, contact Jen at [jgoren@tbeonline.org](mailto:jgoren@tbeonline.org) or go to [www.tbeonline.org](http://www.tbeonline.org) and reserve yours today!

## ECC HOLIDAY CLASS SCHEDULE

WEDNESDAY, SEPTEMBER 20 – Erev Rosh HaShanah (pick-up 12:30 PM)

THURSDAY, SEPTEMBER 21 – NO SCHOOL – Rosh HaShanah

FRIDAY, SEPTEMBER 29 – Erev Yom Kippur (pick-up 12:30 PM)

THURSDAY, OCTOBER 5 – NO SCHOOL – Sukkot

THURSDAY, OCTOBER 12 – NO SCHOOL – Simchat Torah





# ECC Family Camp

Join your Temple ECC Family at Tamarack's Butzel Retreat Center.

**FRIDAY - SUNDAY,  
OCTOBER 20-22**

Arts & Crafts, Sports,  
Superhero Party, Bonfires,  
Pioneer Skills,  
Adult Social activities, etc.

For more information, contact Danielle at  
dgordon@tbeonline.org or 248.851.1100.

REGISTER ONLINE AT  
<http://www.tbeonline.org/ecc-family-camp>







## ADULT EDUCATION COURSES @ TBE WEDNESDAYS OFFERINGS

### TORAH STUDY

**WEDNESDAY, SEPT 6 – DEC 20 9:30 – 10:30 AM**

Delve into the Torah text with Lea Beurer and your classmates. Read the text for the plain meaning as well as the implications and deeper meanings that can help us understand our Jewish identities.

*\$120 members / \$150 non-members*

### ADVANCED HEBREW

**WEDNESDAY, SEPT 6 – DEC 20 10:30 – 11:30 AM**

Grow your vocabulary and develop your grammatical skills with Lea Beurer through the reading and translating of literature.

*\$120 members / \$150 non-members*

### EXPLORING MIDDOT

**WEDNESDAY, OCT 18 – DEC 6 7:00 – 8:00 PM**

Middot, or Jewish Virtues, are our personal qualities, attributes, and traits which are derived from our Jewish tradition. Come learn about what Judaism has to say about humility, generosity, courage and other Middot; then consider how you might balance these in your own life in order to increase your emotional, interpersonal, and spiritual fulfillment.

*Free of charge*

### BEGINNING CONVERSATIONAL HEBREW

**WEDNESDAY, JAN 10 – MAY 9, 2018 7:00 – 8:00 PM**

This class is for those who know how to decode Hebrew, but want to know what the words mean. We'll learn some basic modern vocabulary and grammar, enough to build simple sentences.

*\$60 members / \$90 non-members*

### ADULT B'NAI MITZVAH

**WEDNESDAY, JAN 10 – MAY 9, 2018 7:00 – 8:00 PM**

*First semester will begin in January, 2018 and will focus on learning to read Hebrew.*

Did you miss out on becoming a Bar/Bat Mitzvah when you were 13? Would you like to learn more about Hebrew, prayer, and Torah? Would you like to be part of a learning community working toward a meaningful ceremony? Temple Beth El will be starting an Adult B'nai Mitzvah Class in January!

JAN – MAY, 2018: Beginning Hebrew

SEPT – DEC, 2018: Understanding our Prayer Service

JAN – MAY, 2019: Torah Study & Ceremony Preparation

SPRING 2019: Adult B'nai Mitzvah Ceremony

*\$60 members / \$90 non-members*

**For more information or to register, please contact Ilene in the Education office at [istone@tbeonline.org](mailto:istone@tbeonline.org) or 248.865.0612.**

# OUR JEWISH AND EDUCATIONAL PRIORITIES

## VISION

It's well known wisdom that if you don't know where you're going, you probably aren't going to get there. That's why this past year, the Religious School Committee, under the leadership of Cathy Segel, set out to develop a vision statement for our educational programs.

This was an in-depth and collaborative process. We started in the fall by identifying themes of impactful learning experiences. Some of these themes included community-building, experiential, informal, and authentic. Next, we engaged in some visioning exercises and prioritizing of values. Many of our families participated in helping us prioritize the values by responding to a survey and helping us focus on the Jewish values that were most important to us. Next, we studied about different types of learning, and committee members observed in our school to discover what types of learning are currently happening. It was agreed that although we will always make use of many educational strategies, we want to emphasize experiential learning in our programs.

We used all of this information to craft the Vision Statement that we have now adopted. We feel that it emphasizes our Jewish and educational priorities and expresses the value of each individual in our sacred community. Our task now is to use this vision to drive our planning. As we undertake new programming and innovations, such as our Project Based Learning pilot in 4th and 5th grades, we will refer back to our vision to make sure that we are being consistent and thoughtful.

We now know where we are going. I'm looking forward to traveling together with all of you as we work toward our visionary destination.

**DEBOARH MOROSOHK** Director of Education  
[dmorosohk@tbeonline.org](mailto:dmorosohk@tbeonline.org)

## VISION STATEMENT

Temple Beth El's Educational Goal is to create a Reform Jewish learning environment that inspires personal growth and strengthens our sacred community through engaging and memorable experiences shaped by these Jewish values:

**LIFELONG LEARNING**  
(Talmud Torah)

**ENRICHING SPIRITUALITY**  
(Kedushah)

**BUILDING COMMUNITY**  
(K'hilah)

**REPAIRING THE WORLD**  
(Tikkun Olam)

**LOVE OF ISRAEL**  
(Ahavat Yisrael)



# TBE Religious School

## GRADES K-6

# OPeN house

**SUNDAY, SEPTEMBER 10**

Start Religious School by seeing old friends, making new friends, meeting staff, and celebrating a new year of Jewish living and learning!

**9:30 AM:** Students go to classrooms

**9:45 AM:** Meeting for parents in Handleman Hall (complimentary breakfast being served)

**10:30 AM:** Parents join students in classrooms

**11:00 AM:** Opening Assembly in the Chapel

**11:30 AM:** Family Picnic for Everyone!

For more information, contact Deboarh Morosohk, Director of Education, at [dmorosohk@tbeonline.org](mailto:dmorosohk@tbeonline.org) or 248.851.1100.



**2017-2018 (5778)**

*Masoret (Tradition) is the name for Temple Beth El's Sunday morning Adult Education series.*

We hope that many in our community will appreciate this opportunity to come together monthly for Jewish learning and sharing, and explore Jewish issues while our children are doing the same in their Religious School classes. Classes will meet on Sundays 10:30 – 11:30 am.

This year (5778) the theme is "Food Glorious Food". We'll explore Jewish values as they relate to food, sustainability, health, and tradition. And of course, we'll do some cooking and tasting!

October 22, 2017	Opening Cooking Session
November 12, 2017	Cantor Gottlieb Kalmowitz: Blessings over Food
December 10, 2017	Sue Salinger: Aligning our Food with our Jewish Values
January 14, 2018	Rabbi Miller: Tu B'shvat and the Seven Species
February 11, 2018	Zach Berg: The American Cheese Revolution
March 11, 2018	Debbie Morosohk: Charoset Around the World
April 22, 2018	Rabbi Brudney: Kosherly Unkosher – Alternatives for Keeping Kosher

# BETY-JBETY

**SUNDAY  
SEPTEMBER 17  
NOON – 2 PM**

# Kickoff

**FREE OF CHARGE**

In Benton's Place following Sunday School. Soft opening of Benton's Place. There will be games and lunch provided for all 6th-12th graders.

BETH  
EL  
TEMPLE  
YOUTH

# BETY

**For teens in  
grades 9-12**

## TBE Youth (BETY)

BETY is about bringing teens together to build a stronger sense of community while growing in our Jewish values. BETY events are run by teens, for teens. Events range from social nights out to community service activities to opportunities for Jewish learning and everything in between. Our teens gain a strong sense of Jewish values and pride in their Judaism. BETY also teaches our teens valuable leadership and teamwork skills, and allows them to have fun with their friends at Temple!

## 2017 – 18 BETY BOARD

**HANNAH KAPLAN** *President*

**ARI RICHARDSON** *Programming Vice President*

**RYAN CHEKAN** *Social Action Vice President*

**TOMMY SHERMAN** *Membership & Recruitment  
Vice President*

**ROSE SHER** *Recording Secretary*

BETH  
EL  
TEMPLE  
YOUTH

# JBETY

**For our  
6th-8th  
graders**

JBETY serves to keep teens involved during and after their Bar/Bat Mitzvah year while also providing them with an easy transition to the high school group. JBETY runs very much like BETY, with events ranging from Havdalah services to social nights. Some of our past JBETY events included trips to the Fowling Warehouse in Detroit and the Detroit Dart Club at the Russell Industrial Center.



## BIRTHDAYS

## SEPTEMBER 1

Rachel Barner  
Nancy Bluth  
Ava Cooperman  
Ethan Cooperman  
Judith Goodman  
Adam Hermes  
Nancy Kantor  
Charles Rosenberg  
Shelly Tauber  
William Weinger

## SEPTEMBER 2

Alyse Belkin  
Maxwell Kushner  
Henson Strasberg

## SEPTEMBER 3

Jacqueline Belkin  
Rochelle Margolis  
Marsha Miro  
Slade Rogers

## SEPTEMBER 4

Wendy Abrams  
Ari Altman  
Laurence Deitch  
Herbert Kessler  
Nancy Milstein  
Harper Wegard  
Zara Wegard

## SEPTEMBER 5

Sharyl Ackerman  
Hannah Byer  
Max Sasson

## SEPTEMBER 6

Brian Guz  
Kenneth Chodock  
Nadine Farbman  
Bella Klemm  
Sarah Menkes  
Shayna Pearlman  
Neil Rockind  
Natalie Shirley  
Alexis Wachlarz-  
Klemm

## SEPTEMBER 7

Barbara Berg  
Aileen Bloom  
Bradley Gordon  
Risa Mabry  
Jerry Pelton  
Martin Schock

## SEPTEMBER 8

Vivien Drouillard  
Abigail Levitsky  
Andres Munk  
Tracye Schwartz

## SEPTEMBER 9

Elise Conner  
Michael Goran  
Joshua Gordon  
Sandra Greenspan  
Semyon Klein  
Kelli Rosenzweig  
Jane Sherman

## SEPTEMBER 10

Sherwin Behrmann  
Dolores Fishman

## SEPTEMBER 11

Jodi Becker  
Morgan Chandler  
Bryana Dorfman  
Braden Holtz  
Allison Hyman  
Audrey Morris  
Margie Oberfelder

## SEPTEMBER 12

Marc Israel  
Eric Levine  
Claude Reitelman  
Barry Schoenbart  
David Steinman  
Sebastian Taubman  
Theodore Taubman  
Aaron Weiss

## SEPTEMBER 13

Paul Burkett  
Jonathan  
Greenberger  
Neil Gross  
Carolyn Koblin  
Nancy Kott  
Marilyn Racklin  
Lev Shleypak  
Jackson Wolfe  
Allison Woodberg

## SEPTEMBER 14

Gillian Bassirpour  
Robert Fenton  
Sharron Kreindler  
James Newman  
Sarah Shulman  
Samantha Spilman

## SEPTEMBER 15

Sophia Cooperman  
Diane Farber  
Sally Ginn  
Amy Margolis  
Lois Pearl

## SEPTEMBER 16

Justin Becker  
Megan Brudney  
Barbara Dunn  
Nathan Kogan

Amanda Tompkins  
Lindsay Waldman

## SEPTEMBER 17

Orli Avi-Yonah  
Suzanne London  
Antonina Victor  
Anne Weiner

## SEPTEMBER 18

Jane Foreman  
Joshua Inwald  
Joyce Margolis  
Beverley Martin  
Suzanne Serlin-  
Resnick  
Efim Philip  
Strumban  
Henry Wineman II  
Sheila Wolf

## SEPTEMBER 19

Adam Becker  
Eric Becker  
Mitchell Boorstein  
Greg Mahaffey  
Elizabeth May  
Emily Rosenberg  
Reese Rosenberg  
Marlo Shaevisky  
Rachel Shultz  
Corey Silverstein

## SEPTEMBER 20

Nicole Becker  
Dylan Fishman  
Leo Friedman  
Nancy Grosfeld  
John Marx  
Lily Mendelson  
Ivan Scholnick  
Elaine Sturman  
Marc Zupmore

## SEPTEMBER 21

Diana Fisher  
Harriett Fuller  
Daniel Miller  
Melissa Schiller

## SEPTEMBER 22

Kathleen August  
Howard Dubin  
Jack Frenkel  
Lyle Hoffman  
Toni Jacob  
Gary Kwartowitz  
Daniel Lievois  
Douglas Nyquist  
Jorin Rubin  
Lois R. Weintraub

## SEPTEMBER 23

Randall Genser  
Merwin Grosberg

Emily Kelman  
Valmy Kulbersh  
Jennifer Ostheimer  
Raymond  
Rosenfeld  
Michael Rybak  
Connor Shirley  
Bryce Toby

## SEPTEMBER 24

Madden Gunsberg  
Harold Josephson  
Richard Komer  
Rhoda Morks  
Yulia Perehodnik  
Sheila Siegel  
Helen Sorser

## SEPTEMBER 25

Mary Aaron  
Daniel Gertner  
Kristen Gross  
Barnet Leland  
Jo Ann Nyquist  
Scott Roberts

## SEPTEMBER 26

Randi Cooperman  
Suzanne Jacoby  
Daniel Myers  
Alcide Piche

## SEPTEMBER 27

Alex Koblin  
Lacey Modell  
Alina Rits  
Lawrence Shaevisky

## SEPTEMBER 28

David Conrad  
Eitan Kalmowitz  
Linnea Lannon  
Barbara Nowak  
Ashley Singer

## SEPTEMBER 29

Cindy Bolokofsky  
Chad Chaiken  
Steven Craig  
Maxx Lyngaas  
Chloe Miller  
John Webb

## SEPTEMBER 30

Daniel Ackerman  
Adam Doran  
Julie Gurwin

## ANNIVERSARIES

## SEPTEMBER 1

Wendy and Gary Bice  
Kaitlin and Jeremy Brown  
Karin and David Johnson  
Dana and David Kelman  
Margo and Jerry Kline

## SEPTEMBER 2

Jennifer and Jordan Glass

## SEPTEMBER 3

Suzette and Norton Chaiken  
Barbara and Harold Dunn

## SEPTEMBER 4

Janis and William Bloom  
Maxine and Byron Canvasser  
Jennifer and William Haughey  
Phyllis Loewenstein and Sheldon  
Plotnik  
Evelyn and Julian Prince  
Jessica and Kenneth Sachs  
Erin and Neil Simmerman  
Karen and Jeffrey Weiss

## SEPTEMBER 5

Susan and Ross Kaplan  
Sharron and Alfred Kreindler  
Gloria and John Kuhn  
Sarah and Matthew Licavoli

Kimbraley and Steven Scharg  
Wendy and Mark Schwartz  
Sheryl and David Stoddard  
Jennifer and Alan Toby

## SEPTEMBER 6

Danielle and Bradley Gordon  
Cathy and Raymond Lambert  
Peggy and Daniel Myers  
Regina and Alcide Piche  
Sharon and Robert Resnick  
Phyllis and Marvin Salomon

## SEPTEMBER 7

Deborah and David Richardson  
Nancy and Michael Stone

## SEPTEMBER 9

Amy and Ari Byer  
Karen and John Mucha  
Shirley and Jerry Shagrin  
Heidi and Henry Wineman III

## SEPTEMBER 10

Colleen and Brett Altman  
Nancy and Doug Fortier  
Stacy and Anthony Merolla  
Kate and Gary Remer  
Ilene and Steven Wolf

## SEPTEMBER 11

Vivian and Douglas DeGain  
Ronda and Daniel Reibscheld  
Michelle and Nicholas Scavone

## SEPTEMBER 12

Sharon and Richard Maskin  
Brooke and Paul Wolf

## SEPTEMBER 13

Andrea and Erik Morganroth  
Jodi and Ronald Weiss

## SEPTEMBER 14

Julie and Michael Abrams  
Bette and Philip Entin

## SEPTEMBER 16

Melissa and Lawrence Shaevisky  
Emily and Theodore Sherman

## SEPTEMBER 17

Rachel Ann and Mark Miller  
Pamela and Paul Renusch  
Ellen and Les Siegel

## SEPTEMBER 19

Victoria and Benjamin Craine  
Anita and Sheldon Pastor

## SEPTEMBER 20

Robyn and Mark Coden  
Jill and Matthew Kasle  
Samantha and Richard Kerwin  
Frances and Mark Klingner

## SEPTEMBER 21

Angie and Adam Kutinsky

## SEPTEMBER 22

Sandra and Jerry Beigler  
Carol and Steven Tarnowsky

## SEPTEMBER 23

Gwen and Leonard Beigler

## SEPTEMBER 24

Deborah and Jonathan Wolman

## SEPTEMBER 25

Katherine and Brian Galin  
Treger and Robert Strasberg

## SEPTEMBER 28

Hilary and Mark Kotik  
Renee and Rick Unger  
Nadine and Michael Zonder

## SEPTEMBER 29

Phyllis and Robert Welling





*We note with  
sorrow the  
passing of...*

#### NORMAN GREENBERG

Father of Linda  
Greenberg and Shelly  
Greenberg-Lawrence.

#### JOEL H. GOODMAN

Father of Joel E.  
Goodman.  
Brother of Karen (John)  
Goodman Mucha and  
Julie (David) Shonkoff.  
Uncle of Rachel, Laura,  
Jennifer and Lauren.

#### BEVERLY LOPATIN

Mother of Ian (Vanessa  
Lee) Lopatin and  
Amy (Jon) Dobrin.  
Grandmother of  
Jedi and Jonah Lopatin.  
Sister of Colen (Eileen)  
Morrison, John (Jan)  
Morrison and  
Linda (Bill) Price.

#### SEPTEMBER 3 - SEPTEMBER 9

SAM ABRAMS * LEAH B. ADLER * SYLVIA LOUISE BABCOCK * MAURICE BARNETT * DR. SIDNEY K. BEIGLER * SIDNEY L. BERMAN * MARVIN CANVASSER * JANE JOSPEY COBB * EVELYN D. FENTON DR. MORRIS FINEMAN * SEYMOUR H. FRANKLIN ALFRED GACH	GEORGE GILBERT * ISAAC GILBERT BERNARD GOLDSTEIN SYLVIA GOREN MILTON GORLOVSKY * IDA E. GREENBERG FANNY M. GROSS SONIA HANDLEMAN SARA HARBURGER CHARLES K. HARRIS * LEAH HELPERT * LIBBIE HERSCH BETTY SHAPIRO HOWARD FLORENCE HOWARD	BROOKE ISBERG * HENRY JACOBS * PHILIP JACOBS * LOUIS KAHN * ISIDOR KAUFMAN TOBY LAKER * ANNIE LEIDER HELEN ELIZABET LEIPZIG * SUSAN LEITER WESCHLER VICTORIA S. LEVIN BESSIE LEVITT * TILLIE LEWIS NITA LICHTENSTEIN	* CHARLES MARIENTHAL ROSE MARKLEY * ROBERT S. MARX * MARIAN NATHANSON * MAY NOSANCHUK * IRVING TOBIAS OBERFELDER * CLARA OWEN NORMA PILCHIK * HELEN VERA PRENTIS LANDE * CLAIRE GRANT RANDS RUTH REDSTONE * HAROLD A. ROBINSON	ABRAHAM ROFEL HAROLD RUBINSTEIN FRED SANDY NATHAN SCHECTER * JACK SCHLESINGER * HELEN SCHOR SIDNEY SCHOTT EDITH SCHWARTZ SOPHIA SHAIN MARY SHAPERO NORMAN SIEGEL ELSIE SIEGLER SIGFRIED SIEGLER MARCIA GLASSER SINGER	HARRY SKLAR LENORE STEIN ROBERT WACHLARZ * ALVIN WAGNER * DORIS WECHSLER * HELEN LEVY WELLING FREDERICK R. WINKELMAN
---	---	--	--	---	--

#### SEPTEMBER 10 - SEPTEMBER 16

SHIRLEY ABRAMS * PAULINE ALKON * MYRON I. ALPERT * JEANETTE P. ASH DR. SYDNEY BERKE JACOB BIRNHART ELEANOR BLAZOFISKY JANET M. GOURWITZ BLONDY DR. HERBERT J. BLOOM ELISABETH ANN CONRAD RALPH DAVIDSON * HELEN L. DEROY SARA EDWARDS LILLIAN ERDELJAN HELEN WINEMAN FARBSTEN * OSMAN E. FISHER JOSEPH C. FISHMAN	* ROBERT STEPHEN FOX ERNEST FRIDSON HILDA GAGE MERVIN GARDNER IKE GLASSER JOSEF GOLDMAN * LOUIS M. GOLDMAN * JACK C. GORDON SHIRLEY SOUFRIENE GORDON * JACOB H. GRANT ALLEN C. GROSS PAUL HANDLEMAN EDITH HELMAN SHARON HITTLEMAN DOROTHY SCHECHTER HOYT FRANCES NEDERLANDER KAHN	DR. HAROLD T. KARBAL ALBERT KEIL * HERMAN KLEIN * SYLVIA KLEINSMITH LEO HARRY KOPPEL * MYREN M. LANDSBERG * LEON LEVINE * ROSE SIMON LEVY * EDNA S. LOCKMAN MORRIS LOVE * RICHARD S. LURIE * ADELE SIEGEL MAYER ROSEANN MECKLER JOSEPH MEYER * DELIA IMERMAN MEYERS * HELEN "PINKY" MICHELSON * IRENE FISHER MILLS SUZANNE HARRIS ORLEY	* SAMUEL PAPERICK DONALD J. PEARL * ABRAHAM PELTON PHYLLIS MARIE PENNELL * NATHAN PETERMAN * HARRY L. PHILLIPS ELIZABETH STRAUSS PLAUT * DAVID POLLACK LT. NATHAN POLOSKI * IRVING M. POPKIN HAROLD REDFIELD * DOROTHY REITELMAN FRANCES M. REYES JANET RICH * ALMA FINLEY ROBINSON ANNE KAPLAN ROBINSON BESSIE R. ROME * PAUL R. SALOMON	* WILLIAM SANDLER SOPHIA SCHWARTZ * SYDNEY L. SHAYNE GLADIS SIMON NELSON SKLAR * BENTON SLATKIN DR. BENJAMIN SMARGON * SAMUEL H. SMITH * HERMAN B. STENBUCK * MITCHELL VICTOR * JACOB WAGENHEIM * OLIVE THAL WEISS JAMES WILKUS * ANNA WINTON MARTIN WOLMAN SLAVA ZUBKOV
---	---	---	---	---

#### SEPTEMBER 17 - SEPTEMBER 23

* SHIRLEY C. AMBER JOSEPH BERNSTEIN MICHAEL JAMES BRENNAN * CHARLES ERNEST BROWN * DONALD CANVASSER FRANCES CHAIKEN SIGMUND CHERNY VICTOR CHRISTIE FRANCES COHEN SALLY SADIE COLUMBUS * ABRAHAM COOPER CAROL W. DICKSTEIN MALANIA DORNIK * ELAINE P. FOREMAN * HELEN RUTH FREED ROCHELLE "COOKIE"	FRENKEL CHIEF WARRANT OFF 3 JONATHAN GIBSON * BERDYE GLASS SONYA GOLDBERG * DR. NORMAN B. GOLDMAN * CAROL A. GORDON DR. JULIUS GRAWI * A. MAX GREENBERG * DR. MAURICE J. HAUSER MARTIN HOLLANDER ELAINE ISBERG HOWARD DAVID HYMAN * ANNE JABLONSKI * BRUCE SAMUEL JAFFE LT. COMMANDER LONDON JONES	EDWARD KAHN * JULIUS KAPLAN NATHAN KAPLAN ANNA SOSIN KATZ * TILLIE KERSHENBAUM * DE ROY L. KUTTNAUER GERTRUDE LAMBERT KALMAN LAX DR. SOL W. LESNICK GERTRUDE LEVINE SAMUEL LEVINE * RITA SUZANNE LEVY * MOLLIE S. MALBIN MARJORIE MARMON DONALD E. MCMILLAN DR. LAWRENCE M. MECKLER	JEAN MELLITZ JILL S. MENKEN * SOL L. NEFOUSE * ALBERT NELSON * EDITH P. NEWMAN * HENRY PARISER SALLY PAUL JACK PLUDWINSKI * LEONE RAPAPORT * DINAH ROSENBAUM * NAT C. ROSENFELD BERNARD ROSNER * MILTON SAFFIR JAY F. SAND * LOUIS H. SAPERSTEIN * MYRTLE SEGAL JOEL SCOTT SERLIN	* HARRIETTE L. SIMONS * BERTHA SLATKIN * MILLIE SLOANE * LILLIAN W. SMILAY * SAMUEL LESTER SOFFERIN SHARON STAV NORMA STILLMAN THELMA STURMAN OLGA STUTMAN HENRY WEINBERG * SAMUEL WEISMAN * LILLIAN WILLENS * MAURICE M. WINSTON MAURICE ZELONKA
---	--	---	---	---

#### SEPTEMBER 24 - SEPTEMBER 30

SAMUEL J. BACH MATILDA BAER LOUIS BEIGLER JOSEPH BELL JACOB BERNSTEIN ELAINE CANVASSER ABRAHAM COHEN STEVE DASH * SAUL DAVIDSON BERNARD DICKSTEIN * MARTIN ELLER BONNIE DAVIS ELLUL * ELIAS EPPS MORRIS FENKELL * FRANCES BARNETT FINK GOLDIE FOGELMAN * JAY L. FOREMAN * BARBARA L. FRANK	HARRY FRANK * AARON FRIEDMAN ALBERT GOLDBERG EDITH GOODMAN JAY MITCHELL GORDON * RHEA GORDON MYLDRED HAMBURGER * JOHN HAYMAN LYN SHARON HENDRICKSON * HON. FREDRICK J. HERTZ * REBECCA HARRIS HERTZBERG * DONALD E. HIRSCHFIELD BERNARD HOWARD DONALD HULL ANCHEL IMBER DOROTHY JANSKY	JOEL JONES * HELEN ROSE KANAGUR HARRIET KANTER EDITH KUSCHNER JAMES LAKER JOSEPH LEIBOVITZ * IRVEN LEIDER * GERSHON LEVY MAURICE MARCUS SIDNEY MARGOLIS * MAYME M. MARKS ENID MARWIL JAMES M. MEYER GERTIE MICHAELSON SHOLA LEVITT MILLER SUSAN MILLER FRED MORGANROTH MARTIN MOSKOVITZ	* CARRIE MUSLINER * SARAH OPPENHEIM * ANNA PAPERICK SAMUEL POSNER * MARK S. RAFELSON * BESSIE RICE NORMA ROBERTS * ROSE RADOM ROSE * SYLVIA ROSENBERG BORIS ROZENBLAT IONE RUSKIN ISEAR SANDELMAN ELMER SCHINDLER * LILLIAN K. SCHLAIN DORIS SCHMIER ANNE SCHWALB * RONALD SCHWARTZ	BARBARA BLOCH STEIN SEEDMAN * RUTH LEVITT SIMMONS * SYLVIA SLOMAN * DR. GERALD D. SPERO * SIMON STEINMAN * ELAINE STERN * SONIA SYME * DANIEL L. TICKTON YETTA TUCKER ANNE WEDES * SHIRLEY S. WEINER * DEBORAH WILKUS
---	---	--	---	---

### RAYMOND & SHIRLEY ABRAMS YOUTH GROUP RECREATION FUND

#### IN MEMORY OF

ALVIN WEISBERG  
ASA SHAPIRO  
MILDRED GREENFIELD  
*Wendy & Henry Abrams & Family*  
JACOB FELDMAN  
*Karen & Alan Lowen*

### BROTHERHOOD FELLOWSHIP FUND

#### IN MEMORY OF

DR. ROY GOODMAN  
*Evelyn & Julian Prince*

#### IN HONOR OF

JEFF HOLLANDER RECEIVING THE  
ROSENBUCH AWARD  
*Judy & John Marx*

### RUTH FRANKLIN EINSTEIN EDUCATION ASSISTANCE FUND

#### IN HONOR OF

90TH BIRTHDAY OF CHUCK ZAMEK  
*Jackie & Earl Remer*

### RABBI LEO M. FRANKLIN ARCHIVES FUND

#### IN MEMORY OF

JULIUS RING  
*Suzanne MacWilliams*

#### IN HONOR OF

NEW HOME OF CHARLES & JAN DURECKI  
*Barbara Grant*

### FRIENDS OF THE PRENTIS LIBRARY FUND

#### IN MEMORY OF

ROY GOODMAN  
*Eileen C. Polk*

#### IN HONOR OF

90TH BIRTHDAY OF CHUCK ZAMEK  
*Eileen & Richard Polk*

### GENERAL OPERATING FUND

#### IN MEMORY OF

BERTHA VOLOSCHIN  
*Raquel Howard*  
CARLA RUDOLF  
*Phyllis Dash*  
HELEN EDER LATTIN  
*Cheryl Chodun*  
LEO HARRIS  
*Michael Harris*  
MARTIN MARKS  
*Paula Marks-Bolton*  
SHIRLEY LEWIS STEINBERG  
*Maj. Irving Steinberg*  
SEMION RACHLIS  
*Larissa & Mark Shain*  
SYLVIA WEISBROD  
*Sandy Hermanoff*

#### IN HONOR OF

45TH ANNIVERSARY OF  
MARK & HARRIET COOPERMAN  
*Chuck Zamek*  
90TH BIRTHDAY OF CHUCK ZAMEK  
*Barbara Raby, Dr Ashok & Sarita Gupta*  
THANK YOU HARRIET & RICHARD SHAPACK  
FOR THEIR GENEROSITY AND  
HOSPITALITY AND A SPEEDY RECOVERY  
*Carol & Paul Hooberman*  
**A CONTRIBUTION**  
*James Rifkin*

### THE MICHELSON-HABER MEMORIAL FUND

#### IN MEMORY OF

MELVIN BARNETT  
*Barbara & Jonathan Haber*

### MAX & HERMINE HAMBURGER LIBRARY MEMORIAL FUND

#### IN MEMORY OF

MYLDRED HAMBURGER  
*It is with deeply heartfelt loving memory from  
her daughter, MernaLyn and grandson, Billy.*

### PAUL & SONIA HANDLEMAN MEMORIAL FUND

#### IN HONOR OF

50TH BIRTHDAY OF CAREY KALMOWITZ  
*Rose & David Handleman*

### SHIRLEY & MAURICE J. HAUSER MEMORIAL FUND

#### IN MEMORY OF

JOSEPH PHILLIPSON  
LILLIAN PHILLIPSON  
MAURICE J. HAUSER  
MOLLIE HAUSER  
SHIRLEY HAUSER  
WILLIAM HAUSER  
*Wendy, Meryl & Kay Hauser*

### HOWARD & CELIA JACOBSON MEMORIAL FUND FOR THE BETH ELDERS OF TEMPLE BETH EL

#### IN HONOR OF

BAT MITZVAH OF MAXINE BEN-YURI  
*Lois & Harvey Freeman*  
BIRTH OF ELAINE & MARK  
SCHONBERGER'S GRANDSON,  
ADAM JAY SCHONBERGER  
BIRTH OF ROCHELLE NELSON'S  
GRANDDAUGHTER,  
PENELOPE ABLE NELSON  
*Lois & Harvey Freeman*

### JEWISH WAR VETERANS IN SUPPORT OF LIBRARY

#### A CONTRIBUTION

Jewish War Veterans

### CANTOR RACHEL GOTTLIEB KALMOWITZ MUSIC FUND

#### IN MEMORY OF

ALVIN WEISBERG  
HELEN PLISKOW  
MEL BARNETT  
Ken Korotkin

#### IN HONOR OF

CANTOR RACHEL GOTTLIEB KALMOWITZ  
*Barbara Cohen*

#### IN HONOR OF

ENGAGEMENT OF SARAH TARNOWSKY  
TO ANTHONY MINNE  
*Phyllis Loewenstein & Sheldon Plotnik*

### THE BABS & HERB KAUFMAN LISTEN IN FUND

#### IN HONOR OF

ANNIVERSARY OF  
ALAN & MARIANNE SCHWARTZ  
ANNIVERSARY OF  
E. DAVID & ELAINE BROCKMAN  
ANNIVERSARY OF  
FREDRICK & EVELYN SIMON  
ANNIVERSARY OF  
GARY & JUDITH BERGMAN  
ANNIVERSARY OF IRA & GAIL MONDRY  
ANNIVERSARY OF JOHN & JUDITH MARX  
ANNIVERSARY OF  
LAURENCE & PENNY DEITCH  
ANNIVERSARY OF MARC & JAN DUNN  
ANNIVERSARY OF MARK & LOIS SHAEVSKY  
ANNIVERSARY OF  
NORMAN & SUSAN PAPPAS  
ANNIVERSARY OF  
RAYMOND & LUCIA HENNEY  
ANNIVERSARY OF  
SHELDON & ROBERTA TOLL  
ANNIVERSARY OF THOMAS & LINDA KLEIN  
ANNIVERSARY OF  
THOMAS & RENEE JABLONSKI  
BIRTHDAY OF IRA MONDRY  
BIRTHDAY OF ALAN LOWEN  
BIRTHDAY OF CAROL ZIECIK  
BIRTHDAY OF CAROLE EBNER  
BIRTHDAY OF FAYCLARE BLAU  
BIRTHDAY OF JEANETTE HAUSER  
BIRTHDAY OF JERROLD BIGELMAN  
BIRTHDAY OF JUDITH KAMINS  
BIRTHDAY OF PHILIP FISCHER  
BIRTHDAY OF PHYLLIS WELLING  
*Babs & Herb Kaufman*



## ELLIN & HAROLD LAWSON YOUTH INSTITUTE FUND

### IN MEMORY OF

BELOVED MOTHER, SELMA E. ARDEN  
*Mrs. Ellin Lawson*

### IN HONOR OF

SPECIAL BIRTHDAY OF ELLIN LAWSON  
*Marjory & Donald Epstein*

## ISADORE & FRANCES MALIN INTERFAITH ACTIVITIES FUND

### IN MEMORY OF

DR. ROY GOODMAN  
LYN SHARON HENDRICKSON  
*Elaine & Mark Schonberger & Family*

### IN HONOR OF

BIRTH OF OUR GRANDSON,  
ADAM JAY SCHONBERGER  
*Elaine & Mark Schonberger*

## RABBI MILLER DISCRETIONARY FUND

### IN MEMORY OF

STEPHEN M. GOLDSTEIN  
*Carole Goldstein*

### IN HONOR OF

RABBI MILLER'S PARTICIPATION IN THE  
BRIS OF ADAM JAY SCHONBERGER  
*Keith & Tara Schonberger & Family*

## HARRY & SALLY NOSANCHUK CARING COMMUNITY FUND

### IN MEMORY OF

ALVIN WEISBERG  
*Harry Nosanchuk, Linda, Scott,  
Eric and Hilary Sircus*  
HAROLD LANGBERG  
MELVIN BARNETT  
MILDRED MICKEY GREENFIELD  
*Linda, Scott, Eric and Hilary Sircus*  
SYLVIA POMERANTZ  
*Harry Nosanchuk*

### IN HONOR OF

ANNIVERSARY OF LOIS & MARK SHAEVSKY  
BARBARA NUSBAUM  
BIRTHDAY OF EILEEN SALK  
BIRTHDAY OF IRA SALK  
BIRTHDAY OF ERIC SIRCUS  
*Harry Nosanchuk*  
ENGAGEMENT OF  
PATTY BATTERSBY & NOAH JACOB  
BIRTH OF RILEY HARPER GURSTEIN  
*Linda, Scott, Eric and Hilary Sircus*

## MEYER & ANNA PRENTIS RELIGIOUS SCHOOL FUND IN MEMORY OF JIMMY MORRIS & WALLY STRAUS

### IN MEMORY OF

ROY GOODMAN  
*Audrey Zupmore*

### IN HONOR OF

ADULT BAR MITZVAH OF  
JAMES ALLEN JONES  
ADULT BAT MITZVAH OF DENNY BROWN  
ADULT BAT MITZVAH OF ANN FLOOD  
ADULT BAT MITZVAH OF  
DEBORAH MCCRORY  
ADULT BAT MITZVAH OF HELEN SORSER  
ADULT BAT MITZVAH OF  
JENNIFER OSTHEIMER  
ADULT BAT MITZVAH OF LYNN SHEERAN  
ADULT BAT MITZVAH OF  
SHARON OBELER  
ADULT BAT MITZVAH OF  
STEPHANIE WALLS  
*Maxine Rudick Ben-Yuri*  
ADULT BAT MITZVAH OF  
KYRSTEN ALEXANDER  
*Doris Miller, Maxine Rudick Ben-Yuri*

## SISTERHOOD BRAILLE FUND

### IN HONOR OF

90TH BIRTHDAY OF CHUCK ZAMEK  
*Karen, Alan, Marissa, Scott & Aaron Lowen*  
SPECIAL BIRTHDAY OF LAURIE FIGG  
*Sandy & Lee Marks*  
SPECIAL BIRTHDAY OF SANDY MARKS  
*Jackie & Earl Remer, Susan & Robert Sovel*

## RABBI DANIEL SYME DISCRETIONARY FUND

### IN HONOR OF

YEHUDAT HADAR RAVIV,  
GRANDDAUGHTER OF  
LISA & HANNAN LIS  
*Carol & Steve Tarnowsky*

### A CONTRIBUTION

*George Chaney*

## TBE SENIOR STAFF MITZVAH FUND

### IN MEMORY OF

JULIA FREEDMAN  
*Bertha Stearn*

### IN HONOR OF

90TH BIRTHDAY OF CHUCK ZAMEK  
*James Marks & Sue Green*

## TEMPLE BETH EL MITZVAH PROJECTS FUND

### IN MEMORY OF

ELIZOWETA SHLEYPAK  
*Bella & Lev Shleypak*

TRIBUTES July 6 thru August 6, 2017

## TRIBUTE FORM

### 3 WAYS TO MAKE TRIBUTES

**ONLINE:** [www.tbeonline.org/tributes](http://www.tbeonline.org/tributes)

**PHONE:** Contact Marianne Myers at  
248.851.1100

**EMAIL:** [mmyers@tbeonline.org](mailto:mmyers@tbeonline.org)

**MAIL:** Temple Beth El  
7400 Telegraph Road  
Bloomfield Hills, MI 48301

#### CONTRIBUTIONS ARE TAX DEDUCTIBLE

• Credit card transactions will incur a  
mandatory non-refundable  
3% convenience fee.

• No convenience fee for  
debit card transactions.

#### PLEASE PLACE MY CONTRIBUTION IN THE FOLLOWING FUND:

In Honor of: \_\_\_\_\_

In Memory of: \_\_\_\_\_

**Minimum contribution: \$18 per tribute.**

Enclosed please find \$ \_\_\_\_\_  
or charge my ☐ Visa ☐ Mastercard ☐ AMEX

# \_\_\_\_\_

exp. date \_\_\_\_\_ sec. code \_\_\_\_\_

Name on card \_\_\_\_\_

#### SEND ACKNOWLEDGMENT TO:

Name: \_\_\_\_\_

Address: \_\_\_\_\_

City/State/Zip: \_\_\_\_\_

#### DONOR'S NAME:

Address: \_\_\_\_\_

City/State/Zip: \_\_\_\_\_

Phone: \_\_\_\_\_

Member \_\_\_\_ Non-member \_\_\_\_

#### HOW DO YOU WISH THIS TRIBUTE TO BE SIGNED?

\_\_\_\_\_  
\_\_\_\_\_  
\_\_\_\_\_

SUNDAY	MONDAY	TUESDAY	WEDNESDAY	THURSDAY	FRIDAY	SATURDAY
					<b>1</b> <b>10:00 AM</b> Torah Class <b>7:00 PM</b> Shabbat Services	<b>2</b> <b>9:00 AM</b> Torah Study <b>10:30 AM</b> Shabbat Services
<b>3</b> <b>9:30 AM</b> Sunday Minyan	<b>4</b> <b>Labor Day</b> Administrative Offices Closed	<b>5</b> <b>12:00 PM – 1:30 PM</b> ECC Meet Your Teacher <b>7:00 PM</b> TBE Choir Rehearsal	<b>6</b> ECC First Day – Half Day <b>5:00 PM</b> Religious School Madrichim Orientation	<b>7</b> ECC Half Day <b>6:15 PM</b> New Member Gathering <b>7:00 PM</b> High Holiday Workshops	<b>8</b> ECC Half Day <b>6:30 PM</b> Pre-Neg with Artwork dedication <b>7:00 PM</b> Shabbat in the Round <b>8:30 PM</b> 7th Grade B'nai Mitzvah Event	<b>9</b> <b>9:00 AM</b> Torah Study <b>10:30 AM</b> Shabbat Services Bat Mitzvah of Madison Prohow
<b>10</b> First Day of Religious School <b>8:30 AM</b> B'nai Mitzvah Club <b>9:00 AM:</b> Sunday Morning Breakfast <b>9:30 AM</b> RS Open House Sunday Minyan <b>10:30 AM</b> WTBE Board Meeting <b>11:00 AM</b> RS Opening Assembly <b>11:30 AM</b> Temple-Wide Picnic	<b>11</b>	<b>12</b> <b>7:00 PM</b> TBE Choir Rehearsal	<b>13</b> <b>9:15 AM</b> Melton PEP Class <b>4:30 PM</b> B'nai Mitzvah Club <b>6:30 PM</b> ECC Curriculum Night	<b>14</b> <b>6:00 PM</b> Board of Trustees Meeting OOT	<b>15</b> <b>9:15 AM</b> Temple Tots <b>7:00 PM</b> Shabbat Services	<b>16</b> <b>9:00 AM</b> Torah Study <b>10:30 AM</b> Shabbat Services <b>7:00 PM</b> Selichot Program <b>9:30 PM</b> Selichot Service
<b>17</b> <b>8:30 AM</b> B'nai Mitzvah Club <b>9:00 AM:</b> Sunday Morning Breakfast <b>9:30 AM</b> Religious School Sunday Minyan <b>11:30 AM</b> Youth Choir Rehearsal <b>NOON</b> Camp Hermelin JBETV Program	<b>18</b>	<b>19</b> <b>7:00 PM</b> Combined HHD/TBE Choir Rehearsal	<b>20</b> <b>Erev Rosh HaShanah</b> ECC Half Day <b>1:00 PM</b> Administrative Offices Close <b>8:00 PM</b> Erev Rosh HaShanah Service	<b>21</b> <b>Rosh HaShanah</b> Administrative Offices Closed <b>9:15 AM</b> Childrens' Services <b>10:30 AM</b> Rosh HaShanah Morning Service <b>3:30 PM</b> Tashlich @ Franklin Cider Mill	<b>22</b> <b>9:15 AM</b> Temple Tots <b>7:00 PM</b> Shabbat Shuva Services	<b>23</b> <b>9:00 AM</b> Torah Study <b>10:30 AM</b> Shabbat Services
<b>24</b> <b>8:30 AM</b> B'nai Mitzvah Club <b>9:00 AM:</b> Sunday Morning Breakfast <b>9:30 AM</b> Religious School Sunday Minyan <b>11:30 AM</b> Youth Choir Rehearsal <b>1:00 PM</b> Monthly Mishpachah	<b>25</b>	<b>26</b>	<b>27</b> <b>9:15 AM</b> Melton PEP Class <b>4:30 PM</b> B'nai Mitzvah Club	<b>28</b>	<b>29</b> <b>Erev Yom Kippur Kol Nidre</b> ECC Half Day <b>1:00 PM</b> Administrative Offices Close <b>9:15 AM</b> Temple Tots <b>8:00 PM</b> Kol Nidre Services	<b>30</b> <b>Yom Kippur</b> See page 12 for the complete High Holiday schedule.



# SOULFUL MUSIC. THOUGHTFUL PRAYER. CHALLENGING IDEAS.



## BAT MITZVAH OF MADISON PROHOW

Madison is an 8th grader at Van Hoosen Middle School in Rochester Hills where she plays basketball and maintains straight A's. She is very athletic and enjoys soccer, basketball and tennis. For part of her Mitzvah Project she organized an adopt a family giving tree for the holidays and volunteered at Beaumont Hospital's Bike Day providing bikes to disabled children. Madison is the daughter of Jennifer and Dan Prohow and the granddaughter of Caren and Ken Manko and Julie and Michael Prohow.

### FRIDAY, SEPTEMBER 1

10:00 AM Torah Class  
7:00 PM Shabbat Service

### SATURDAY, SEPTEMBER 2

9:00 AM Torah Study  
10:30 AM Shabbat Service  
Torah Reader: Rabbi Brudney

### FRIDAY, SEPTEMBER 8

6:30 pm Pre-neg and Dedication  
7:00 PM Shabbat in the Round  
8:30 PM 7th Grade BM Event

### SATURDAY, SEPTEMBER 9

9:00 AM Torah Study  
10:30 AM Shabbat Service  
BAT MITZVAH OF  
MADISON PROHOW

### FRIDAY, SEPTEMBER 15

7:00 PM Shabbat Service

### SATURDAY, SEPTEMBER 16

9:00 AM Torah Study  
10:30 AM Shabbat Service  
Torah Reader: Sue Green  
7:00 PM Selichot Program  
9:00 PM Dessert & Reception  
9:30 PM Selichot Service

### FRIDAY, SEPTEMBER 22

7:00 PM Shabbat Shuva Service

### SATURDAY, SEPTEMBER 23

9:00 AM Torah Study  
10:30 AM Shabbat Service  
Torah Reader: Sara Tatchio

### FRIDAY, SEPTEMBER 29

#### KOL NIDRE

8:00 PM Kol Nidre Service

### SATURDAY, SEPTEMBER 30

#### YOM KIPPUR

9:15 AM Older Children's Service  
(Ages 7-12) • Chapel  
9:15 AM Younger Children's Service  
(Ages 0-6) • Sanctuary  
9:45 AM Craft Project for Families  
10:30 AM Yom Kippur Morning Service  
Sanctuary  
Teen Experience Benton's Place  
12:45 PM Learning with Rabbi Brudney  
Chapel  
1:30 PM Stories of Survival: A  
personal narrative from  
Temple members • Chapel  
2:15 PM Reflections: A Musical  
Interlude • Chapel  
3:30 PM Yom Kippur Afternoon  
Service • Sanctuary  
4:30 PM Yizkor & Concluding Service  
Sanctuary  
6:00 PM Break the Fast and  
Havdalah • Front Patio

## The perfect ending to any Shabbat service ... enjoying food with one another.

Please consider supporting this festive gathering with a donation to the Oneg/Kiddush Fund.

To sponsor an Oneg or Kiddush, contact Marianne Myers at 248.851.1100 or mmyers@tbeonline.org.

A spiritual, uplifting, and meaningful Torah service in our beautiful Maas Chapel.

**FRIDAY NIGHTS: 7:00 PM**

**SATURDAY MORNINGS: 10:30 AM**



## YIZKOR SERVICE & PLAQUE DEDICATION

**Thursday, October 12  
10:30 AM**

Join us in worship as we mark the close of the High Holidays and remember our departed.

### PLAQUE DEDICATIONS

Sylvia Barnett Babcock  
Marion A. Breskin  
Betty Jane Fisher  
Dr. Daniel Goodman  
Ronald L. Greenberg  
Tenny S. Greenberg  
Elaine Stern  
Irma Wald

#### CLERGY

Mark Miller, Senior Rabbi  
Rachel Gottlieb Kalmowitz, Cantor  
Megan Brudney, Assistant Rabbi  
Daniel B. Syme, Rabbi Emeritus  
John Redfield, Honorary Cantor Emeritus

#### STAFF

Kim Raznik, Executive Director  
Deborah Morosohk, RJE, Director of Education  
Claire Danaher, Chief Financial Officer  
Susie Weiner, Director of Early Childhood Center  
Danielle Gordon, Program Director  
Lindsey Fox-Wagner, Communications Director  
Rachel Rudman, Member Relations Director  
Joseph Unger, Director of Youth Engagement  
Alan Lowen, B'nai Mitzvah Coordinator  
Jim Gabriel, Accompanist  
Jan Durecki, Archivist  
Laura Williams, Curator  
Allan N. Friant, Sr., Building Superintendent  
Joe Winter, Cemetery Superintendent  
Morris Collins, Reception/Security  
Thomas Jablonski, Executive Director Emeritus

#### EXECUTIVE COMMITTEE

Jordon Wertheimer, President  
Liz Modell, Vice President/President Elect  
David Foltyn, Vice President  
Maxine Lieveis, Vice President  
Warren Rose, Vice President  
Adam M. Lutz, Treasurer  
Robin Fenberg, Secretary  
L. Steven Weiner, Immediate Past President  
E. Todd Sable, Member-at-Large  
Alex Stotland, Member-at-Large

#### AFFILIATES

Elaine Brockman, Beth Elders  
Bruce Plisner, Brotherhood  
Elaine Schonberger, Women of Temple Beth El  
Alecia Rice, The Kid-ish Club  
Hannah Kaplan, Beth El Temple Youth (BET)  
Amy Byer & Emily Rosenberg, K-5 K'hilah Club



TEMPLE  
BETH EL

7400 TELEGRAPH ROAD  
BLOOMFIELD HILLS, MI 48301  
WWW.TBEONLINE.ORG

Periodicals  
Postage Paid at  
Royal Oak, MI

TIME VALUED

# TEMPLE-WIDE PICNIC

**SUNDAY, SEPTEMBER 10**

**11:30 AM – 1:30 PM**

**ENJOY AN AFTERNOON TOGETHER**

Food, music and games for the entire family at  
TBE's Temple-wide picnic.

Enjoy inflatables, balloon art, and face painting.

**FREE OF CHARGE**

For more info or to RSVP, contact Danielle at [dgordon@tbeonline.org](mailto:dgordon@tbeonline.org) or 248.851.1100.