

OCTOBER 2016
TISHREI 5777

VOL. 30
ISSUE 1

^{the}Bulletin



Our Spirit is Growing...

*Wishing you and your family a shanah tovah um'tukah ...
a sweet and happy new year!*

Weekend Line-up

BETH EL SUNDAY REVIEW

Sunday morning was bustling with energy as students came back to Religious School and parents joined in for the Open House program. Everyone sang and danced at a spectacular Noah Aronson Concert and then we all enjoyed the sunshine, good food, ice cream and games at our Annual Picnic. What a great way to kick off the new year!



Kabbalat SHABBAT

TEMPLE BETH EL

FRIDAY, NOVEMBER 18 at 6:00 PM

Music, dinner & fun activities for families with elementary aged children.

INTERFAITH THANKSGIVING SERVICE

*Hosted at Christ Church
Cranbrook, Bloomfield Hills*

Temple Beth El united with
St. Hugo's, Kirk in the Hills,
Muslim Unity Center, and
Christ Church Cranbrook.

TUESDAY, NOVEMBER 22 from 7:00 - 9:00 PM



Small Fri Shabbat

FRIDAY, NOVEMBER 11

*A Friday evening celebration for families
with children, ages 0-6+.*

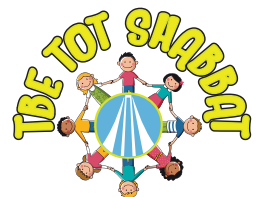
**We'll have a family service of singing
and prayers followed by a kid-friendly
dinner, and dessert!**

5:30 PM SERVICE

DINNER / \$36 PER FAMILY

RSVP to Danielle Gordon at dgordon@tbeonline.org
with the number of adults and children attending.

Join Us
For



*A fun, musical Saturday morning experience
for families with children, ages 0-6+.*

Saturday, November 5

**9:30 am Service in the Chapel,
Kiddush & activity following.**

NOAH ARONSON



The halls of Temple Beth El were full of music & celebration, as musical artist-in-residence Noah Aronson brought his inspiring music, warmth, energy and humor to our congregation. It was truly an unforgettable weekend!

We would like to thank everyone who brought their presence and enthusiasm to these events, as well as the Korotkin Insurance Group, Carol & Steve Tarnowsky and Treger & Strasberg who made this weekend possible.

VIEW MORE PHOTOS & VIDEOS AT
www.tbeline.org/noah-aronson



Upcoming Programs



Jewishly - Inspired Yoga

SUNDAY, OCTOBER 9 & 23

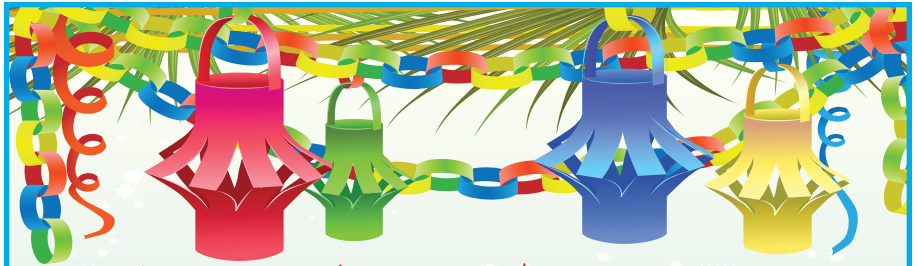
9:45 - 10:45 AM / SANCTUARY

FREE OF CHARGE!

Please bring a yoga mat.

Questions, contact Forest Levy Wolfe at
forestlevy@gmail.com

RSVP to Danielle Gordon at
dgordon@tbeonline.org or 248.851.1100



Family Sukkot Celebration

SUNDAY, OCTOBER 16 at 4:30 PM

Join us for a family-friendly afternoon in the sukkah.

Stories, Snacks and a Photobooth!

RSVP to Danielle Gordon at dgordon@tbeonline.org or 248.851.1100



*Breakfast every Sunday - 9am in
Handleman Hall when Religious
School is in session.*

BAGEL & COFFEE \$2
FULL BREAKFAST \$3

Breakfast Speaker - No Charge

October 16 / 9:30 am

Anita & Cliff DeVine

Adult Sukkot Night

Wednesday, October 19

Wine & Hors d'oeuvres with Temple Clergy.

A relaxed evening of learning
in the sukkah for the
over 21 crowd.

RSVP to Danielle Gordon at
dgordon@tbeonline.org or
248.851.1100

It's on the House!

Complimentary coffee, tea, espresso drinks
or hot chocolate by Catered Coffee in the
Slotkin Foyer on Sundays, when Religious
School is in session.

Sponsorships are welcomed,
contact Danielle Gordon at
248-851-1100 or
dgordon@tbeonline.org.



Simchat Torah with Klezundheit and Consecration

SUNDAY, OCTOBER 23

5:00 PM

We'll dance and sing with the
Torahs as we celebrate the annual
conclusion and new beginning of
our Torah reading cycle!

Light oneq to follow.

Upcoming Programs



Last month was my dad's *yahrzeit* (the anniversary of his death). While I don't feel especially obligated to go to synagogue to say the Mourner's Kaddish, I try to go. To be honest, I feel much closer to my father at the cemetery (which to me is a beautiful and peaceful place to be) than at shul. But this year marked the fifteenth anniversary since his death, so I made it a point to go to shul.

Little did I know, however, that the service would be over an hour since it was a special holiday (Tisha B'Av), and there were additional prayers and a Torah service. Neither my husband nor I wanted to be there that long, as the only reason we were there was to say the Mourner's Kaddish. However, I was determined to make the best of it. Also, my Bubbie was so happy that I was there and I couldn't very well leave and disappoint her.

In some synagogues and temples, it is customary to honor those in mourning with an *aliyah* (a calling to the Torah). It was a special holiday service and all of the *aliyot* were taken, but the Rabbi asked if I would like to dress the Torah (an act called *g'lilah*). I don't remember ever doing this before but would never refuse the Rabbi and I thought to myself 'how hard can this be'. As it turns out, with this specific Torah, it was HARD. I stood up on the bimah for a solid minute and couldn't figure out how to buckle the tie that holds the Torah scrolls together. Please keep in mind several things:

1. Tisha B'av was a fast day and it was past 5pm when this was happening and I swear I heard hungry stomachs grumbling
2. It was almost the High Holy Days which means the majority of the weight of the Torah was all on one side since
3. The Rabbi was the one holding the Torah which made me exceptionally nervous
4. A solid minute seems extremely long when you are in front of a crowd

So, to recap: The Rabbi of my family's synagogue held the Torah, with all of the weight on one side, after fasting for almost 24 hours, while I stood on the bimah and fumbled with a buckle for over a minute. After what seemed like a good five minutes, the Rabbi called someone over to help me buckle the tie, and then I continued to put on the Torah cover, the crown and the yad, completing my task. I turned to go to my seat, feeling slightly embarrassed and defeated, when the Rabbi stopped me and said: "Yasher Koach", an idiom meaning "Good Job". On the way to my seat, several more congregants said the same thing to me. I continued to my seat and listened to the prayers as the Torah was put back in the Ark. *And then it bit me:* It didn't matter that I fumbled on the bimah, or made the Rabbi (and most likely other people) uncomfortable. A congregation is about supporting one another, offering words of encouragement and providing a safe space. While I was there to fulfill the mitzvah of saying Kaddish for my father, the congregation fulfilled the mitzvah of *hachnasat orchim*, honoring guests and making me feel comfortable.

So to all of you reading, I challenge you, I challenge all of us, to do the same thing and make Temple Beth El a place of comfort. With the High Holidays upon us, we are going to see people we haven't seen in a while, and we want everyone to feel the warmth and hospitality this Temple provides. How can we make our Temple a place that honors guests? What can we do to make people feel supported and safe? As this season of reflection, learning and forgiveness approaches, I encourage us all to say hello, give an extra smile, and look inside of ourselves for those acts of kindness, no matter how small, that can truly make a difference in someone's day.

*Danielle Gordon is excited
to be Temple Beth El's new
Program Director.
Please reach out and
share any ideas you may
have with her!*

248.325.9706
dgordon@tbeonline.org



Please let Temple know when you or a loved one is in need of care by contacting the Rabbis' study at 248.865.0602, llucassian@tbeonline.org or by writing to Caring@tbeonline.org.

*We will respond with compassion
and confidentiality.*

Working Together We Uncovered A Long-Forgotten Story

by Jan Durecki, Archivist

The research process for the September 20, 2016 Jewish History Detectives Lecture, Before Detroit was HOCKEYTOWN, had a very frustrating beginning. I knew that in 1926, Beth El member Maurice Caplan had worked with members of the Detroit Athletic Club to secure financing for the Olympia Stadium in Detroit. Very soon, I realized there was much more to the story. I learned that Caplan, and another Beth El member, Morris Friedberg, were the first American owners of the NHL team that eventually became the Detroit Red Wings. I immediately turned for assistance to the archivists at Ilitch Holdings and the Hockey Hall of Fame Archives in Toronto.

Although helpful, both repositories had little information on Caplan and Friedberg and their connection to the NHL. A stroke of good fortune came when I was able to connect with the grandchild of a DAC member Caplan worked with who was integrally involved in the fight to secure the NHL franchise for Detroit as well as the construction of the Olympia. She allowed me to duplicate her grandfather's files and to make them accessible for researchers and hockey historians. (Name withheld to protect her privacy.) After the re-design of our online catalogue, the John Townsend Hockey Collection, accession number 2016.004 will be found in new the Community Collections Exhibit.

I would like to thank Dr. Robert and Joan Jampel for their ongoing support of the Jewish History Detectives Lecture Series and the Jewish Historical Society of Michigan for their co-sponsorship of the event. Temple's graphic designer, Marie Curtis, deserves acknowledgement for her superior work creating our marketing materials. My appreciation extends to the Townsend Family, Mary Lou Zieve, archives' volunteers Suzi MacWilliams and Andrea Gallucci, and the Red Wings' and Hall of Fame's archivists. Working together we uncovered this long-forgotten story of professional hockey.

"Masterful work... compelling story... landmark study" are a few of the glowing accolades used to describe Roads Taken.

The Rabbi Leo M. Franklin Archives presents the Mary Einstein Shapero Memorial lecture...

Roads Taken: The Great Jewish Migrations to the New World and the Peddlers who Forged the Way



NOVEMBER 1
7:00 PM
HANDLEMAN
HALL

FREE OF CHARGE

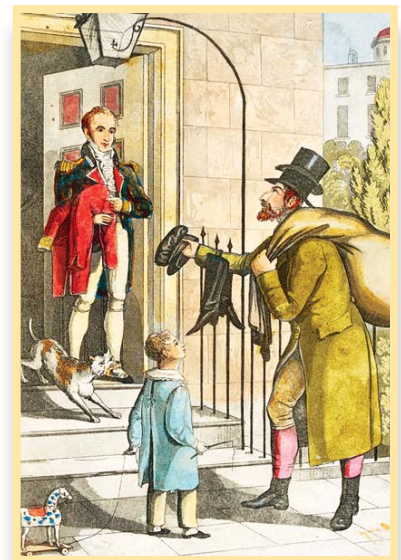
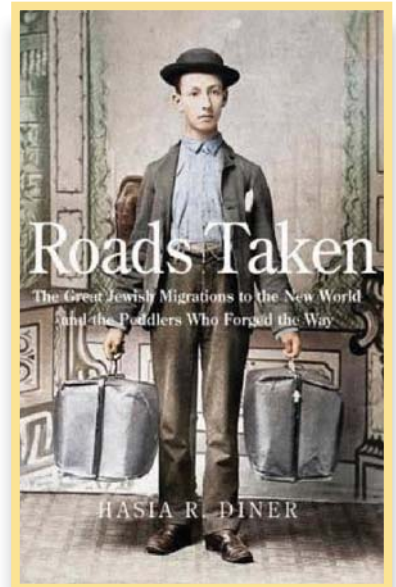
Academic, historian and award-winning author Hasia Diner will join us to discuss her most recent book. It is the story of young Jewish peddlers who broadened the range of the retail distribution system, revolutionized consumerism and were catalysts for migration. Hasia is the Professor of the American Jewish History, Hebrew and Judaic Studies and Director of the Goldstein-Goren Center of American Jewish History at New York University.

EVERYONE WELCOME

COPIES OF ROADS TAKEN WILL BE AVAILABLE FOR PURCHASE.

(Cash or personal check preferred)

RSVP to Jan Durecki, Archivist at
farchives@tbeonline.org or 248.865.0628



ca. 1820.




Sponsored by the Honorable Walter Shapero
Co-sponsored by the Jewish Historical Society of Michigan

Join us for a wonderful weekend
as we celebrate the ...

INSTALLATION - of - Rabbi Megan Brudney

NOVEMBER 4 - 5



FRIDAY, NOVEMBER 4

6 PM Music Shabbat Service & Installation
Special guest
Rabbi Rachel Nussbaum

7 PM Dinner by Cutting Edge Cuisine
*RSVP to Danielle Gordon
at dgordon@tbeonline.org*

SATURDAY, NOVEMBER 5

12:30 PM Nosh & Knowledge
Featuring special guest
Rabbi Rachel Nussbaum
Lunch \$18
*RSVP to Nancy Fortier at
248.495.5013.*

TEMPLE BETH EL PROUDLY SUPPORTS

The Cancer Thrivers Network for Jewish Women, a program of Jewish Family Service, is a group of women who think positively, and through their common diagnosis seek to enjoy life to its fullest, sharing fun, educational, and spiritual experiences.



Unlike support groups, the Network welcomes women who have been diagnosed with any type of cancer at any time in their lives. Their programs include such activities as educational lectures, book club, knitting group, art classes, lunch get togethers, and distribution of items to cancer patients who are undergoing treatment.

UPCOMING EVENTS

BOOK CLUB / WEDNESDAY, OCTOBER 26, 1:00 PM

A Man Called Ove by Frederick Backman

KNITTING / WEDNESDAY, NOVEMBER 15 1:00 PM

(third Monday of each month)

Items are knitted for distribution to cancer patients in need.

For further information please contact:

Tracy Agranove at 248.592.2267 or

tagranove@jfsdetroit.org



All events take place at Jewish Family Service.

SHARE YOUR SIMCHAS WITH YOUR TEMPLE FAMILY

Engagements, marriages, births or special accomplishments.

If you or a family member would like us to share your good news in the *TBE Bulletin*, please contact Marie Curtis at mc Curtis@tbeonline.org or 248.851.1100.

TBE MEMBERS TOUR JEWISH HISTORY IN DETROIT ON BIKES



L to R: Bruce Jacob, Dennis Frank, Phyllis Loewenstein and Earl Remer

This year's all-new 18-mile route began at New Center Park, and ventured through the Boston-Edison neighborhood, along Chicago Blvd. and up to Grand River to the Grande Ballroom. The cyclists explored the once-deeply Jewish Dexter and Davison region, including



Elayne Gross Photography

Cathy Deutchman & Charlene Handleman

a visit to Central High School and then back, traveling through the Oakland Avenue/North End area of the city, home to a large Jewish population in the 1930s. A post-ride, picnic-in-the-park lunch (kosher) and celebration was held at New Center Park.

Drs. Judith Schartenberg Goodman and Roy Goodman are pleased to announce the engagement of their daughter,
DR. LAUREN GOODMAN
to
DR. JARON GOLDBERG
Lauren is the granddaughter of Dr. Merrill & Phoebe Goodman.

Annual Appeal



TEMPLE BETH EL ANNUAL APPEAL 2016 CO-CHAIRS, MAXINE LIEVOIS & MIKE ABRAMS

L'shanah Tovah! On behalf of the Clergy and Board of Trustees, we wish you a sweet, happy, and healthy New Year. As another High Holy Day season unfolds, we hope you will join us in reflecting on the many successes, exciting changes, and longstanding traditions at our Temple.

We are thrilled with the recent addition of Rabbi Megan Brudney, a tremendously talented young rabbi who has already jumped into many aspects of Temple life. Our Religious School and Early Childhood Center are growing, bringing in dynamic new teachers, and helping our next generation develop strong relationships and deepen their understanding of Judaism. In fact, our various educational, youth, and family programs have stimulated such enthusiasm in the broader community that we have welcomed nearly 100 new families with children to Temple Beth El over the past two years!

Our monthly Music Shabbat continues to draw large crowds each month, and Sunday mornings at Temple are filled with activity: students, parents, and other Temple members take part in learning opportunities, chat with friends at our espresso bar, relax with some yoga, take advantage of Wi-Fi and workspace in our inviting Slotkin Foyer, and remember loved ones at the Sunday Minyan.

We are very proud of what we offer our members and that Our Spirit is Growing! But we also understand that all this programming for our diverse congregational family is costly. Once each year, Temple members are given the opportunity to support excellence at Beth El with a gift over and above their dues. Your participation, at whatever level is comfortable, is critical to help us continue building a synagogue that makes a difference in our lives.

Temple Beth El enters 5777 with terrific momentum. Please take a moment to visit our website (www.tbeonline.org) and click on the "Annual Appeal" link at the top of the page - or contact Executive Director Kim Raznik directly (248.865.0636 or kraznik@tbeonline.org) in order to make a contribution.

We hope you will join many Temple members by getting a jump start on your *tzedakah* for the New Year ... we look forward to seeing you here soon!



2016/5777 - Temple Beth El Annual Appeal

SUPPORT LEVELS

- | | |
|--|-------------------|
| <input type="checkbox"/> \$10,000 + | Guardian |
| <input type="checkbox"/> \$5,000 - \$9,999 | Benefactor |
| <input type="checkbox"/> \$2,500 - \$4,999 | Leadership Circle |
| <input type="checkbox"/> \$1,000 - \$2,499 | Sponsor |
| <input type="checkbox"/> \$500 - \$999 | Advocate |
| <input type="checkbox"/> \$18-\$499 | Chai |

For special arrangements or to pay in monthly installments please call Claire Danaher at 248-865-0617.

I/we want to ensure TBE's future by giving \$ _____

I/we (name) _____ Enclosed \$ _____

Please list recognition as: _____
or () Anonymous

I/we wish to pay by VISA MASTERCARD AMEX (circle one) _____ Check _____ Bill me

Account # _____ Exp. _____ (Sec Code #) _____
() Please add an additional 3% to defray the cost of paying by credit card.

Cardholder's Name _____

season of RENEWAL



Judaism has long offered an intriguing dichotomy in the way we approach our year. Spring is the season of new buds, lengthening days, and shimmering hope. It is the time of year when we see rebirth before our eyes, and feel the pull of new growth as the world emerges from the darkness of winter. And yet, it is

during Autumn – as the days grow shorter, while the leaves begin to wither and fall – that we celebrate our New Year.

Rosh HaShanah, the “head of the year,” arrives when our year seems to be fading. We talk explicitly about renewal and purpose and hope – but it may feel like those things should wait until the world perks up again.

Our ancestors, however, came from agrarian roots. They understood the cycle of the seasons in a deep way. Although the earth appears barren, fertility looms beneath the surface – far from the red-brown hues we observe at this time of year, the catalyst for new life has already begun. Seeds, buried in layers of soil and leaves and snow, wait patiently for the right time to sprout, bringing with them all the potential they have been protecting since they were formed.

So, too, with our lives. The Days of Awe provide us with a unique opportunity – to look beneath the surface, find the vast potential within, and commit ourselves to creating a new year better than the last. Often, it can be difficult to find our best selves – we are held back by fears or old habits, we are stymied by frustrations or grief. We know who we want to be, but the path is covered and hidden.



Then we walk in the Sanctuary for the High Holy Days ... and we realize that amidst the beautiful music and challenging words, the power resides in each of us to reimagine ourselves. Our holiday season is not just about coming to Temple – it is about leaving Temple with the gift of that one, small seed that may grow into something new and exciting and fulfilling this year.

At Temple Beth El, we say that Our Spirit is Growing! The truth is, each one of us both contributes to and benefits from this community in vital ways. On behalf of our clergy, staff, and Board ... I am excited to see you soon. Rachel Ann and our boys join me in wishing you and your family shanah tovah um'tukah – a good and sweet year ahead!

Rabbi Mark Miller

YIZKOR SERVICE AND PLAQUE DEDICATION



MONDAY,
OCTOBER 24
10:30 AM

Join us in worship as
we mark the close of
the High Holy Days
and remember our
departed.

PLAQUE DEDICATIONS

Donald Miles Cutler

Reva Goldberg Jacob

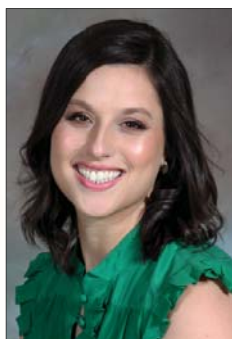
S. Howard "Bud"
Schiller

Sheldon Schwartz

Turning
the "Right"
Answer...

INTO

The Right
Answer.



"Last year, before I came to Temple Beth El, I interned at Beit T'Shuvah, a Jewish rehab for addictions. I served as a spiritual counselor and would meet one on one with clients to discuss the spiritual aspects of their recovery."

One of my clients, Jerry, had the same struggle almost every week in our sessions. Often when I'd ask him a question ("How did it make you feel when you got to be a leader among your friends?" "Where did it take you when you got in trouble with another resident?") he would start to answer—and then midway through would slow his speech and search my face for hints as to whether his answer was "correct" or not. Every week we had the same follow-up conversation in which I'd tell him that it wasn't about getting the "right" answer but about being honest with himself, with me, and with his Higher Power. My goal was not for him to say what sounded good, but rather to address what was not good so we could work on it together.

Much like Jerry, as these High Holy Days approach, I find myself quite concerned about my own "wrong" answers from 5776. Often I have not succeeded in living up to my highest ideals; on a regular basis I have not resisted the temptation to do things that I know are not right. As I prepare to be questioned, one scene from our liturgy haunts me in particular. Our *Un'taneh Tokef* uses a courtroom metaphor, saying: "In truth You [God] are Judge and Arbiter, Counsel and Witness." When I read this line I cannot help but conjure an eerie image in which I am on trial as the defendant—and as my eyes pan across the room, the "person" in every single seat is God: God seated in front in judge's robes, God approaching the bench to confer with the judge, God taking notes on the stenography machine, God sitting in the gallery observing the proceedings.

As terrifying as I find this scene at first blush, perhaps it is not as adversarial as it feels. Perhaps as I sit, surrounded by these different Godly apparitions, the goal is exactly the same as it was when I sat with Jerry: to find and to face the truth. The courtroom becomes a place not for meting out punishments, but rather for forensic analysis of what went wrong and why. Maybe the cross-examination is less about catching me to prove a point and more about forcing me to confront the impulses that led me to behavior I know to be bad. I need not fear the answer that is not "good," only the refusal to admit as much.

I wish you a High Holy Day season of courageous honesty and of true willingness to confront yourself. I look forward to seeing those of you whom I have already met and to meeting so many more in the coming month!

Megan Brudney

B'shalom,
Rabbi Megan Brudney



Temple Beth El High Holy Days

As Rosh HaShanah and Yom Kippur approach, our tradition teaches that these High Holy Days are so important that one cannot simply show up and reap all the benefits they have to offer. It takes a serious process of introspection and reflection to enter the new year filled with hope, promise, and new understanding.

Here at Temple Beth El, we are dedicated to making the entire High Holy Day season as meaningful as possible for every Temple member. We hope you will take advantage of some or all of the opportunities we have prepared for a deeply spiritual experience.



TASHLICH

Monday, October 3
Franklin Cider Mill at 3:30 PM

TEEN TASHLICH

Monday, October 3 at 3:00 PM

This event is open to all TBE 8-12 graders

Join Joey Unger and our Temple teens for our Teen Tashlich program at Franklin Cider Mill! Enjoy FREE cider and donuts prior to joining the rest of the Temple for Tashlich!

For questions or to RSVP for Teen Tashlich, contact Joey Unger at junger@tbeonline.org or at 248.851.1100.

YOM KIPPUR TEEN EXPERIENCE

Benton's Place
Wednesday, October 12 at 3:30 PM

Join our TBE teens for a fun, challenging, and engaging teen experience! We will be providing a program designed to engage our youth in the holiday observance!

To RSVP, contact Joey Unger at junger@tbeonline.org or at 248.851.1100.



As the Sun Sets on Yom Kippur

When services end with a rolling Shofar blast through the Sanctuary, join your Temple family on the front patio for a brief musical Havdalah and break-the-fast with some juice and honey cake.

High Holy Day Schedule 2016/5777

**The Rabbis, Cantor, Officers,
Board of Trustees and
Temple Staff wish our members
and their families
a happy and fruitful New Year.**



MEMBER ADMISSION: Every adult member (in good standing) of Temple Beth El will receive a High Holy Day ticket in the mail. Tickets are good for all services on Rosh HaShanah and Yom Kippur – please present your ticket upon arrival.

CHILDREN and YOUNG ADULTS: Children and college students up to age 25, or dependents living in a member's household, will not be receiving a High Holy Day ticket. These groups are welcome to enter with their parents. Children under 13 are welcome to enter, as long as they are accompanied by a parent/responsible adult with a High Holy Day ticket ... and we ask that you make sure your children attend the service(s) most appropriate for their age and attention span.

GUESTS: Temple members (in good standing) may request tickets for extended family or friends by contacting Marianne Myers at 248.851.1100.

YOM KIPPUR MEMORIAL SERVICE: The 4:30 pm Memorial Service on the Day of Atonement is a solemn service of remembrance during which we read the names of those loved ones who have died since last Yom Kippur.

BABY SITTING: Babysitting service is available by reservation only. Babysitting on Rosh HaShanah and Yom Kippur will be available from 9:45 am until the end of the morning service – in the ECC wing (0-6 years), and at Benton's Place (ages 7-12). Children must be dropped off and picked up by a parent or guardian. Please go to www.tbeline.org/hhdchildcare and fill out the "Child Care - High Holy Days" form under the Registration tab.

PRAYER BOOKS: Gates of Repentance, the Reform Movement's Machzor, will be used again this year. Temple Beth El does not furnish books, but they may be purchased at the Temple office for \$25. On Yom Kippur afternoon, Temple will once again provide a printed booklet with service materials from the Reform Movement's brand new Machzor, as we prepare to utilize these new books in the future.

COURTESY TRAVEL FORMS: Members planning to be out of town for the High Holy Days may request a Courtesy Form from our office entitling them to admission to any Reform Temple affiliated with the Union for Reform Judaism. Arrangements must be made in advance.

INFORMATION: For additional information or for ticket requests please call Marianne Myers at 248.851.1100 x 3121.

Erev Rosh HaShanah

SUNDAY, OCTOBER 2

EVENING SERVICE

8:00 pm

Rosh HaShanah Day

MONDAY, OCTOBER 3

YOUNGER CHILDREN'S SERVICE

9:15 - 9:45 am in the Sanctuary (ages 0-6+)

OLDER CHILDREN'S SERVICE

9:15 - 10:00 am in the Chapel (ages 7-12)

*9:45-10:15 am – donuts/cider in Handleman Hall for families.

MORNING SERVICE

10:30 am in the Sanctuary**

TEEN EXPERIENCE

3:00 pm Teens meet at the Franklin Cider Mill.

TASHLICH

3:30 pm - Franklin Cider Mill

****Babysitting during Morning Service will be available (starting at 9:45 am) for younger children (ECC wing) and older children (Benton's Place) ... so parents can bring children, attend the adult service, and then take their children home. RSVP's are required. Please go to www.tbeline.org/hhdchildcare and fill out the "Child Care - High Holy Days" form under the Registration tab.**

Kol Nidre

TUESDAY, OCTOBER 11

8:00 pm

Yom Kippur

WEDNESDAY, OCTOBER 12

YOUNGER CHILDREN'S SERVICE

9:15 - 9:45 am in the Sanctuary (ages 0-6+)

OLDER CHILDREN'S SERVICE

9:15 - 10:00 am in the Chapel (ages 7-12)

*9:45-10:15 am – Craft project in Handleman Hall for families.

MORNING SERVICE

10:30 am in the Sanctuary**

LEARNING WITH RABBI BRUDNEY

1:00 pm in the Chapel

BROTHERHOOD MEDITATIVE READINGS

1:45 pm in the 1/3 Hall

REFLECTIONS MUSICAL INTERLUDE

2:30 pm in the Sanctuary

****Babysitting during Morning Service will be available (starting at 9:45 am) for younger children (ECC wing) and older children (Benton's Place) ... so parents can bring children, attend the adult service, and then take their children home. RSVP's are required.**

AFTERNOON SERVICE

3:30 pm in the Sanctuary

TEEN EXPERIENCE

3:30 - 4:30 pm / Benton's Place

YIZKOR AND CONCLUDING SERVICE

4:30 pm in the Sanctuary, then front Patio for a brief musical Havdalah and break-the-fast with some juice and honey cake.

Temple Affiliates



The Women of
Temple Beth El

CORDIALLY INVITE YOU TO OUR

Annual
Membership Event

WEDNESDAY EVENING, OCTOBER 26
at
7:00 PM IN HANDLEMAN HALL

Join other Women of TBE as Restaurant
Blogger, and our own W-TBE member

Jorin Rubin

gives us all the news about what's new in the "D."
You can follow Jorin on Instagram at 24ateDetroit.

DESSERT, COFFEE AND TEA WILL BE SERVED
BY CUTTING EDGE CUSINE

*Join us for a chance to win gifts, meet new
members, and say hi to old friends.*

THE EVENT IS FREE FOR PAID UP MEMBERS.
Not a member yet, no problem.
Just pay your membership dues that evening.
Friends are welcome for a fee of \$10.00.

For further information
or to RSVP, contact
Rochelle Nelson at 248.210.8490 or
e-mail your RSVP to rochnels@aol.com.



WOMEN OF TBE'S ANNUAL

WINE & CHOCOLATE
TASTING EVENT

Featuring
MICHIGAN
WHISKEYS

SATURDAY, DECEMBER 3 at 7:00 PM

Join us for an Evening of
Wine, Chocolate, Michigan Whiskeys
and Food Tastings

\$25 PER PERSON

Entertainment by: John Persico Catered by: Cutting Edge Cuisine

INCLUDES A SILENT AUCTION & CHOCOLATE
TASTINGS BY LOCAL VENDORS

Proceeds from the evening will benefit the Sisterhood of Temple Beth
El Braille Bindery, supplying FREE books to the blind worldwide.

For more information contact Elaine Schonberger 248.227.3282

I would like _____ reservations at \$25 each for a TOTAL of \$ _____

I cannot attend, but would like to support Women of TBE with a donation of \$ _____

I would like to be a sponsor \$100 _____ \$250 _____ \$500 _____ \$1,000 _____

Name of Sponsor as you want to be printed in the program. _____

Name _____

Address _____

Phone _____

_____ I have enclosed my check payable to Women of Temple Beth El or
Charge my credit card (circle one)  

_____ Exp. Date _____

Sec. # _____ Name on Card _____

Billing Address _____

Your reservation will be held at the door the night of the event, no tickets will be mailed.
Please return this form and payment to Women of Temple Beth El
7400 Telegraph Road, Bloomfield Hills, MI 48301

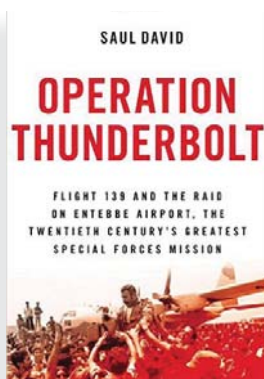
BITES & BOOKS

TBE BLOOMFIELD HILLS MI

Join us for an exciting new year of Bites & Books.

2016

SESSION



NOVEMBER 14

Morning Session: 10:00 AM

Evening Session: 7:00 PM

Operation Thunderbolt

by David Saul

This is the story of Flight 139 and the Raid on Entebbe Airport, known as the most audacious hostage rescue mission in history. This definitive account of one of the greatest Special Forces missions ever will remind us of a time when the world was awed by Israel's accomplishment.

Facilitated by Deborah Morosohk, RJE, Director of Education



CONTACT

Debbie Morosohk
Director of Education
dmorosohk@tbeonline.org
248.325.9708

FEES

The 5 book series is \$25

There is a \$10/session drop-in fee.

WOMEN OF TEMPLE BETH EL

Judaica Gift Shop

Featuring
Unique Rosh
HaShanah
Gifts.

NEW LOOK...NEW MERCHANDISE!

We carry Judaica merchandise for your home and family and many gift items for that special wedding or life cycle event.

STOP & SHOP:
Tuesday & Wednesday 10 AM - 2 PM
Sunday 9:00 AM - 12:30 PM



Join JBETY for *FREE*
froYo
and a discussion
with the Rabbi!



SUNDAY, OCTOBER 9
NOON - 1:00 PM

All TBE 7-8 graders are invited for our first Beth El Temple Youth Junior (JBETY) event of the year! Come enjoy free froYo at Strohm's Ice Cream Parlour and participate in a lively discussion with friends and Rabbi Megan Brudney!



Stroh's Ice Cream
3659 W. Maple Road
Bloomfield Hills, MI, 48301

BETY SHABBAT DINNER



Join Beth El Temple Youth as we partner with First Presbyterian Church of Saline and their teens for a Shabbat dinner and discussion on how each of our religions celebrate the Sabbath!

Following services come hang out and play video games at Benton's Place.

FRIDAY, NOVEMBER 18

Dinner 5:00 PM in the Alpert Room

Services 6:00 PM in the Chapel

FREE OF CHARGE

This event is open to all TBE 9-12 graders

To RSVP for these events, contact Joey Unger at junger@tbeonline.org or at 248.851.1100.

BETH EL TEMPLE TOTS



FRIDAYS
9:15 - 10:45 AM

*Temple Tots is for children
1 to 2 years of age.
Join ECC Director Susie
Weiner and engage in art,
music, open-ended playtime
and a musical Shabbat
celebration each week.*

For more information, contact
Susie at 248.851.1100 or
sweiner@tbeonline.org



מסורת MASORET TBE SUNDAY MORNING ADULT EDUCATION SERIES

We hope that many in our community will appreciate this opportunity to come together monthly for Jewish learning and sharing. Classes will meet on Sundays 10:00 – 11:00 am, so we hope that many of our Religious School parents will take this opportunity to learn while their children do.

This year (5777) the theme of Masoret is “**Celebrating through the Jewish Year**”. We’ll come to understand the Jewish calendar and the holidays that happen throughout the year.

*Masoret (Tradition) is the name for
Temple Beth El’s new Sunday morning
Adult Education Series.*

October 23, 2016	Sukkot and Simchat Torah
November 13, 2016	The Jewish Calendar
December 11, 2016	Chanukah
January 22, 2017	Shabbat
February 26, 2017	Purim
March 26, 2017	Passover
April 23, 2017	Shavuot

For more information, contact Debbie Morosohk, Director of Education, at dmorosohk@tbeonline.org or 248.851.1100.

Tributes

Tributes from August 8 through September 8, 2016

RAYMOND & SHIRLEY ABRAMS YOUTH GROUP RECREATION FUND

IN MEMORY OF

DR. MAURY SACK
MILTON DRESNER

Wendy & Henry Abrams & Family

DONALD CANVASSER MEMORIAL FUND

IN MEMORY OF

UNCLE OF PAULA MILLER

Sandra & Thomas Millman

RECOVERY OF STEVE KLEIN

Sandra and Thomas Millman

HERMAN & BEA DICKSTEIN MEMORIAL YOUTH FUND

IN MEMORY OF

ETHEL MARX
GERRY MATLICK

Kim & Kenneth Dickstein

IN HONOR OF

MARRIAGE OF LENA EPSTEIN & ERIC MEDWED

Adam Winkelman

RUTH FRANKLIN EINSTEIN EDUCATION ASSISTANCE FUND

IN HONOR OF

55TH ANNIVERSARY OF JANET & HENRY MOSES

Ann & David Conrad

80TH BIRTHDAY OF HENRY MOSES

Ann & David Conrad

RABBI LEO M. FRANKLIN ARCHIVES FUND

IN HONOR OF

ANNIVERSARY OF VICKI & BEN CRAINE

Lucille Miller

GENERAL OPERATING FUND WITH GRATITUDE

Carole Goldstein & Family

IN MEMORY OF

GEORGE INGBER
Cheryl & Dan Guyer
GERTRUDE WEINBERG
Maj. Irving Steinberg
JASON STONE

Brenda & Sandy Passer

LYLA BERKSON

Cyril Feldman

STEPHEN GOLDSTEIN

Darrin Dimitre & Family

SEPHEM M. GOLDSTEIN

Gail & Peter Nickowitz

THE MICHELSON-HABER MEMORIAL FUND

IN HONOR OF

55TH ANNIVERSARY OF TOM & LINDA KLEIN

Barbara & Jonathan Haber

PAUL & SONIA HANDLEMAN MEMORIAL FUND

IN MEMORY OF

JANET GABRIEL

Rose & David Handleman

MS. TIA KAIGLER

Rose & David Handleman

IN HONOR OF

HAPPY BIRTHDAY OF CHARLENE HANDLEMAN

Rose & David Handleman

COMPLETE & SPEEDY RECOVER OF ERIC LUTZ

Rose & David Handleman

SHIRLEY & MAURICE J HAUSER MEMORIAL FUND

IN MEMORY OF

JOSEPH PHILLIPSON

LILLIAN PHILLIPSON

MAURICE HAUSER

MOLLIE HAUSER

SHIRLEY HAUSER

WILLIAM HAUSER

Wendy, Meryl & Kay Hauser

RABBI RICHARD C. & RENDA HERTZ GIFT OF LIFE FUND

IN HONOR OF

BIRTH OF GRANDDAUGHTER, EVY WERTHEIMER

Denny Brown

HOWARD & CELIA JACOBSON MEMORIAL FUND FOR THE BETH ELDERS OF TEMPLE BETH EL

IN MEMORY

DORIS PAUL

Elaine & David Brockman

JEWISH WAR VETERANS IN SUPPORT OF LIBRARY

A DONATION

Jewish War Veterans

CANTOR KALMOWITZ CANTORIAL EXPENSE FUND

IN HONOR OF

CANTOR KALMOWITZ'S PARTICIPATION IN

DANIELLE'S WEDDING

Sara & Greg Tatchio

CANTOR RACHEL KALMOWITZ DISCRETIONARY FUND

IN MEMORY OF

DREW HERZOFF

Jack H. Bindes

IN HONOR OF

CANTOR KALMOWITZ'S PARTICIPATION

IN OUR WEDDING

Lena & Eric Medwed

BAR MITZVAH OF LUKE JACOBSON

The Jacobson Family

BEAUTIFUL MUSIC AT LENA'S WEDDING

Donald & Marjory Epstein

CANTOR RACHEL KALMOWITZ MUSIC FUND

IN MEMORY OF

JANET GABRIEL

Chuck Zamek

MICHAEL PACKARD

Ruth & Gil Plotnik

IN HONOR OF

SPEEDY RECOVERY OF SANDY KOPELMAN

Ken Korotkin

NOAH ARONSON WEEKEND

Sara & Greg Tatchio

NOAH ARONSON WEEKEND

Sue Green & Jim Marks

THE BABS & HERB KAUFMAN LISTEN IN FUND

IN HONOR OF

75TH ANNIVERSARY OF

PHYLLIS & JOE GARLOCK

Lainey & Arthur Steuer

IN HONOR OF

ANNIVERSARY OF

ALAN & MARIANNE SCHWARTZ

ANNIVERSARY OF E.

DAVID & ELAINE BROCKMAN

ANNIVERSARY OF ERIC & DEBORAH CANVASSER

ANNIVERSARY OF FREDERICK & EVELYN SIMON

ANNIVERSARY OF GARY & JUDITH BERGMAN

ANNIVERSARY OF JOHN & JUDITH MARX

ANNIVERSARY OF LAURANCE & PENNY DEITCH

ANNIVERSARY OF MARC & JAN DUNN

ANNIVERSARY OF MYRON & JOYCE LABAN

ANNIVERSARY OF RAYMOND & LUCIA HENNEY

ANNIVERSARY OF THOMAS & LINDA KLEIN

ANNIVERSARY OF THOMAS & RENEE JABLONSKI

BIRTHDAY OF FAYCLARE BLAU

BIRTHDAY OF JEANETTE HAUSER

Babs & Herb Kaufman

BIRTH OF CHAD & WHITNEY TECHNER'S TWINS

Don & Margi Epstein

FREDERICK H. MARX MEMORIAL FUND

IN MEMORY OF

ELEANOR LEHMAN SLOMAN

Linda & Harry Applebaum

IN HONOR OF

MARRIAGE OF CAROLYN MARX &

ALEXANDER CARRAVALLAH

Mrs. Maurice Zox & Family

ELEANOR SLOMAN

Francee Ford

RABBI MILLER DISCRETIONARY FUND

IN MEMORY OF

ALVIN WAGNER
Victory & Bruce Mansfield
STEPHEN GOLDSTEIN
Carole Goldstein

IN HONOR OF

BEAUTIFUL AUFRUF CEREMONY FOR
LAUREN KERWIN & JORDAN YELLEN
Cheryl & Ronald Kerwin

IN HONOR OF

WEDDING OF LENA & ERIC MEDWED
Donald & Marjory Epstein
WEDDING OF MICHAEL & SARA MINKIN
Ellen Minkin

MARIAN & BEN NATHANSON & CHARLES NATHANSON BROTHERHOOD MEMORIAL YOUTH FUND

IN MEMORY OF

ETHEL MARX
Lucille Miller, Evelyn Burton, Dr & Mrs Barry Diznoff, Barbara Frankel & Ronald Michalak, Esther Mintz, Elaine Okun, Elayne Greenspan, Lois R. Weintraub, Rosemary Conway and The Conway Family, The Goetz Family

HARRY & SALLY NOSANCHUK CARING COMMUNITY FUND

IN MEMORY OF

ARTHUR J. CHABON
SANDRA GALE
Linda, Scott, Eric and Hilary Sircus
CELIA RAIMI
SHIRLEY SCHRAM
GLORIA SIEGEL
Mr. Harry Nosanchuk, Linda, Scott, Eric and Hilary Sircus
JERRY KAYE
MARJORIE SHELTON
MAY NOSANCHUK
Harry Nosanchuk

IN HONOR OF

BIRTHDAY OF CLAIRE ZIMMERS
BIRTHDAY OF MARGIE OBERFELDER
ENGAGEMENT OF
SHAYNA WEINSTEIN & MICHAEL MCKIM
RECOVERY OF SIDNEY FREEDLAND
Harry Nosanchuk

ONEG/ KIDDUSH FUND

IN HONOR OF

100TH BIRTHDAY OF BERTHA STEARN
Eileen Millstone

FRIENDS OF THE PRENTIS LIBRARY FUND

IN HONOR OF

EILEEN POLK ON HER RETIREMENT
AS TBE'S LIBRARIAN
Jill Greenspan Gun

ROSNER CULTURAL ENRICHMENT FUND FOR CHILDREN AT RISK

IN HONOR OF

50TH ANNIVERSARY OF EVELYN & JULIAN PRINCE
Leslie & Jerry Solomon

LOIS & MARK SHAEVSKY FOOD ALLERGY AWARENESS FUND

IN MEMORY OF

SYLVIA BABCOCK
Lois & Mark Shaevsky

IN HONOR OF

ALAN SINGER
DR. BRIAN BERMAN
Marlo & Tom Shaevsky

SISTERHOOD BRAILLE FUND

IN HONOR OF

MORT COLLINS RECEIVING THE DISTINGUISHED CAREER ACHIEVEMENT AWARD FROM OAKLAND COUNTY BAR ASSOCIATION
Jackie & Earl Remer

RABBI DANIEL SYME DISCRETIONARY FUND

IN MEMORY OF

BEATRICE DASHOW
Risa & Mark Finn
MICHAEL PACKARD
Bob Dickstein, Audrey & Herb Saperstein
MILTON DRESNER
Suzette & Norton Chaiken Family

IN HONOR OF

RABBI DANIEL SYME'S DEDICATION & SERVICE & BECOMING RABBI EMERITUS

Ellen Lichterman
RABBI SYME'S DEVOTED SERVICE TO TEMPLE
Lois R. Weintraub
RABBI SYME'S RETIREMENT & BECOMING RABBI EMERITUS

Aviva & Dean Friedman
100TH BIRTHDAY OF BERTHA STEARN
Jan Rice

A DONATION
George Chaney

RABBI DANIEL B. SYME EARLY CHILDHOOD CENTER SCHOLARSHIP FUND

IN HONOR OF

RABBI DANIEL SYME WITH THANKS
Arlene & Mark Rubinstein

HELEN & PAUL ZUCKERMAN NURSERY SCHOOL FUND

IN MEMORY OF

PEGGY COHEN
Joy Kaplan

TRIBUTE FORM

Please Place My Contribution In The Following Fund:

In Honor of: _____

In Memory of: _____

Enclosed Please Find \$ _____

We recommend a minimum contribution of \$10 per tribute.

SEND ACKNOWLEDGMENT TO:

Name: _____

Address: _____

City/State/Zip: _____

Donations can also be made online at www.tbeonline.org/tributes

DONOR'S NAME:

Address: _____

City/State/Zip: _____

Phone: _____

_____ Member _____ Non-member

How do you wish this tribute to be signed?



TEMPLE
BETH EL

Make Checks Payable and Mail to:
Temple Beth El
7400 Telegraph Road
Bloomfield Hills, MI 48301
CONTRIBUTIONS ARE TAX DEDUCTIBLE

Yahrzeits



We note with Sorrow the Passing of...

SIDNEY CHAFETZ

Father of Francine Adler

MICHAEL LANE PACKARD

Son of Rita & Herb Packard

SCOTT BOORSTEIN

Son of Nina and Marc Boorstein
Nephew of Dan Boorstein

SANDRA WOLFE

Husband of Burton Wolfe
Mother of Ian Wolfe

SYLVIA BABCOCK

Mother of Nancy Grosfeld,
Robert Babcock

SHIRLEY SOUFRINE GORDON

Mother of Joanne Hurwitz
Grandmother of Alexandra Weitz
Great Grandmother of Wyatt Weitz

OCTOBER 2-8

*JOYCE NEWLANDER
ABRAMSON
MILTON AGABRA
SHERMAN BECKER
EMILY J. BERNSTEIN
*FRED BINDER
JOSEPH BUCHSTANE
JACOB COHEN
JOSEPH EDWARD COHEN
ROSE COHEN
*BEN COHN
VIVIAN COOPER
SHELDON LEE DECKER

WILBUR DEYOUNG
IRVING B. DIZIK
*ESTELLE FEDERMAN
AARON FENTON
*ROSE FINKMAN
ALMA FISHER
DR. MILTON P. FISHER
*BESSIE STEINBERG
FOREMAN
LEO I. FRANKLIN
*HANNA SITTIG FREUD
RAMON IRWIN GERSON
*CARL GERSTEN

*ESTHER GITTLEN
*SAYDE J. GOLDBERG
SHARON ROSEN-
GOLDBERG
JIM GOLDEN
*JULIUS L. GOODMAN
*ALMA M. GOOEL
*RITA JUNE GOYER
*SAMUEL S. GREENBERG
*ROSA HELLER
*RAE HERTZBERG
*MINNIE GOLDFINE HOCK
*BERT HYMAN

*ANNA KAHN
MARCIA KAHN
*FRANCES KAPLAN
MELANI KASH
*ISIDORE E. KATZ
*SILAS K. KINSLEY
DR. ALEXANDER KLEIN
*EMANUEL KLEIN
HAROLD J. KOTZEN
DAVID LAWRENCE
*DR. JULIUS LEFTON
DR. DAVID G. LERNER
*ROY L. LEVENSON

JACK LEVINE
LARRY LEVINE
*CORINNE LEWIS
*CELIA KIRSHBAM LEZIN
JULIUS DAVID LONDON
SAMUEL B. LUCAS
BRIAN MARCUS MARGOLIS
DANIEL MARKLEY
HAROLD MERDLER
*GISELA NEWLANDER
*DORIS PLISNER
*ALBERT POTIKER
ROBERT PAUL RADTKE

*DON S. ROGERS
JEAN ROSEN
IRVING SAFFER
SHIRLEY J. SCHOCK
RUTH SCHOTT
CYRIL N. SCHWARTZ
ISAK SCHWARZBERG
ABRAHAM SHULEVITZ
KHANAN SORER
*HARRY S. STAMLER
*MEYER STEINBERG
*JOSHUA JAMES STONE
LOUIS SUGARMAN

*MAMIE TICKTON
*JOSEPHINE WEISS
ROBERT WINE
*JACOB WINTON
SADIE YOLICK
*MARCIA H. YOUNG
DAVID M. ZAMEK
SARAH HELEN ZLATKIN

OCTOBER 9-15

*BEATRICE M. ALEXANDER
*MARVIN BARNETT
SHARON BEIGLER
PEARL BELLO
*ARTHUR B. BENSON
BEVERLY COHN
GERTRUDE S. COLLINS
LILLIAN CONWAY

*DANIEL B. DUNITZ
JERRY EVANS
DR. JULIUS FELD
*STANLEY FLEISCHAKER
*DONALD FRANK
ELLEN FRANK
*KAYE GOODWIN FRANK
MAX FRIEDMAN

IRENE NEUVIRTH GINN
DR. ELLIOTT GLICKSBERG
KATHRYN HAAS
SYLVIA HELFER
HARRIET HILLER
AMANDA HURWITZ
HERMAN KAUFMAN
*DAVID BRUCE KELLER

MARTIN KOHLENBERG
TAMARA KRAPIVINSKY
*JEANETTE L. LEACH
*BARBARA LENCHNER
BARBARA SIMON LURIA
*ROBERT JOHN MAAS
ESTHER MALLIN
LEON MALOFF

ELLA MARCUS
*HARRY A. MAYSELS
*MORRIS MEYER
*DR. SOLOMON G. MEYERS
*HYMAN MORRISON
MICHAEL MULLER
*DAVID T. NEDERLANDER
ETHEL PALMAN

MIGNON (CUDDLES) PASSER
*CAROL A. POLOZKER
MARIAN ROSE
*MANFORD ROSENBLUM
ALFRED ROSENTHAL
PEARL SCHARF
*DR. NATHAN H. SCHLAFFER
*LILLIAN SEGAL

BORIS B. SHAPIRA
*EVE STEINBERG
ROSE STEINHARDT
*LOUIS C. TOUFF
SAM O. WATNICK
HARVEY WILLENS
*ALVIN S. WINKELMAN
*BELLE YANOVER

OCTOBER 16-22

*CAROLYN ASH
*THEODORE BARGMAN
HOWARD BARRON
HELEN BASKIN
CELIA BELKIN
LOUIS BENSMAN
LEO BIGELMAN
CECILIA BILLES
*JOSEPHINE BLOOM
*FRED BRADFIELD
*ANNA F. BRODY
TERRY BYER

*SARAH R. COHEN
MORRIS COLLINS
*DAVID EMERSON
BRUCE ENGELSON
EDWARD I. FEUER
*JOSEPH FRENKEL
HARRIS GARRICK
EVELYN GOLDBERG
EVA GOLDSTROM
*BENJAMIN W. GRANET
HUGH WILLIAM
GREENBERG

PETER GREENBERG
RITA GREENBERG
*HERBERT ALLEN
GREENSTONE
DAVID ANDREW GROSS
ALBERT HUTLER
ALBERT JAKOBSON
SANDRA LEE KAHN
*SUSAN KANAGUR
*DR. MICHAEL D. KLEIMAN
*RALPH KLEINSMITH
SAMUEL KOHLENBERG

*NATE B. KOPLOY
*FANNIE MARX KOPPLE
JORDAN LABINER
ETHEL WYN LANDIS
WALTER LASSER
*ABE M. LEVENBERG
JACOB LEVITT
*JOSEPH LEWIS
*ROSE R. LIEBERMAN
*ARMENA AMY LIGHT
*JULIA K. LIGHTSTONE
MARSHALL LOEWENSTEIN

ANNETTE S. MARCUS
*ALFRED MEYERS
*EMMA B. MEYERS
*LESTER MORRIS
JEANETTE P. MYERS
ANNA NOVICK
*ELINOR OETTINGER
*RALF OETTINGER
*JANET OLLESHEIMER
JOHN PAUL
*LENA SIMON POLASKY
ROBERT REINHEIMER

JACOB RESNICK
*JACOB RESSLER
BELLA ROSNER
ETHAN ROSS
SAUL ROTHENBERG
*ROSA ROTHSTEIN
*JESSIE SABLE
*EDMUND SAPERSTON
SYLVIA SCHLESINGER
SAMUEL SHAMES
PROF. HELEN SHERMAN
*LEO SIEGEL

*LILLIAN SIMMONS
*MAURICE D. SMILAY
*CRAIG SMITH
MORTON L. SNYDER
*FERDINAND STERN
BEATRICE BAKER URDAN
EVELYN FOSTER- WAGEN
*SIDNEY WEISS
ISADORE WINKELMAN
*LENA YALOMSTEIN

OCTOBER 23-29

*ANN ARONER ADELMAN
MOISHIE AIDENBAUM
*STANLEY R. AKERS
*MANUEL E. ARDEN
IRMGARD BAMBERGER
MARION BARON
MILDRED BLAU
JULIE E. BLUESTEIN
*JOAN KLEIFF BROWN
DOROTHY CAPLAN
GERALD "JERRY" CLAYTON
LOWELL CONRAD
*MARGUERITE JANE ELSON

*PAULINE C. EPPS
CLOTHILDE FILL
*DOROTHY ROSE FINKEL
ADA FLOYD
JEFFREY FORTIER
*EUGENE FRANK
*SELMA FREEDMAN
MINNIE GOLDEN
JACOB GOLDSTEIN
*FRADEL GRANET
*SARAH GREENSPAN
SAMUEL B. GROSS
HERMINE HAMBURGER

*MARK HERSTEIN
EDWARD HOUSEMAN
LEANORE HUTLER
*SARA ISSER
*EVA SCHLAFFER KAINE
*BETTY KELMAN
*DAVID KETLER
*RUTH ARIE KLEIN
EVA LITT KLUGERMAN
ADAM KRONEN
EVA LANDSMAN
FRANCES LAZAR
*SAM LAZARUS

*MILTON E. LICHTERMAN
*LOUIS LIPPMAN
LILLIAN MARGULIES
*HERMAN MARKS
REV. ROBERT MCCAMMON
*JOSEPH D. MEYER
JOHN MICHAELSON
*BONNIE MICHELSON
*DOROTHY M. MILLER
LEONTY MUCHNIK
*DAVID I. NACHMAN
*HARRY L. NEWMAN
DAVID NOVICK

DOROTHY PACKARD
*HEDWIG PERITZ
DANIEL PEVOS
*JULIA RING
*JAMES ALAN ROSE
*SARAH REVA RUBIN
*RICHARD M. SAFFIR
*ROSE SAFFIR
MARVIN SARAQUSE
ARNOLD SCHAFFER
MILDRED SCHIFF
HYMAN G. SCHLAFFER
*MARTIN S. SCHOTT

LILLIAN SCHWARTZ
RUTH L. SHAPACK
NELSON SHAPERO
*SAMUEL SHAPERO
*JAY SHELLEN
*HARRIET BARNETT SILVER
SIDNEY SINGER
HAROLD SITRON
BURTON SMITH
*HARRY SOTT
*DR. HERMAN M. SPERLING
*FLORENCE O. SPERO

*HANNAH DEBORAH
STEINBERG
*MAURICE E. SWADE
JACK MERRILL THAV
ROSA ANN TOBY
*JOSEPHINE STERN WEINER
*MORRIS L. WILK
*SUNNY ANN WISE
LARRY WISHNOW
BESSIE ZELONKA

OCTOBER 30- NOVEMBER 5

HERMAN BAND
*ABRAHAM H. BARON
*JOSEPH H. BEARMAN
JACK BEHRMANN
SAMUEL BLUESTEIN
HELEN BRESLOW
ALLEN CHERNEY
MAX CHICOREL
*LEONARD COHEN
*SAM A. COHEN
*MINNIE ROBINSON COHN
DODY COLMAN

DOROTHY BAND
COOPERMAN
*ROSEMARY B. CRANE
LANE DECKER
FANNIE DORB
*LOUIS M. ELLIMAN
BEATRICE FEIGENBAUM
*ELIZABETH L. FINLEY
*ANNA FLIGMAN
*RUTH BLOOM FOX
*HATTIE O. FRANKLIN
CHARLES FREEDMAN

LAURA FRIEDMAN
*TOBIAS GARON
IDA GARRICK
BYRON "BUD" GERSON
*BEN GLASIER
MAE GREEN
*RUTH B. GREENSTONE
*SADIE DORA GROSBERG
IRWIN HAMBURGER
FANNIE HARRIS
*SHIRLEY HARRIS
MAMIE HEILBRONNER

*HAROLD HELPER
*JOHN C. HOPP
*JOANNA HORWITZ
*SAMUEL JOSPEY
*GUILA KALLET
ROSE KAPLAN
*MAY KLEIN
ANN KOPMAN
EUGENE KRAFT
LOUIS KUX
DR. MARSHALL LEVY
*HINDA LEWINSON

IDA LOVE
*DONALD A. MAHLER
FREDERICK H. MARK
CORY MAZAROS
*BERTHA MEYER
*JIMMY PRENTIS MORRIS
*NAT MORRISON
*HARRIET DAVIS NIMAN
*LENA MARX PARSHALL
*PHILIP DENNIS RANDS
*ESTHER JACOB ROBERTS

*BARBARA BERENT
RUBINSTEIN
JUDY SCAVONE
*ARNOLD A. SCHAFFER
*ADELE SCHLAFFER
*TOLIO SHAEVSKY
*PAUL M. SHAPIRO
ESTHER SHILLMAN
PAUL SILVERSTEIN
NEIL BARRY SPORN
MINNIE STEIN
*SHIRLEY R. STEINBERG

STANLEY STEINBORN
*WALLY P. STRAUS
*EDITH STARK SUCHER
*JENNIE LEWIS SWEETWINE
*LILLIAN TALAN
*ABRAHAM TOBIAS
*BELLA TOBIAS
*SALLY CASSEL TOBIAS
*LEE WAINSTOCK
MOE WASSERMAN
*REBECCA WEINBAUM
BELLE WEISBERG

OCTOBER ANNIVERSARIES

October 1
Julie & Randall Genser

October 2
Joan & Robert Jampel

October 6
Nicole & Jacob Drouillard

October 7
Yulia & Boris Perehodnik
Marlo & Thomas Shaevsky

October 9
Thea & Stuart Kayne
Cindy & Barry Schoenbart
Nancy & Arnold Shapero

October 10
Kimberly & Joseph Raznik
Marni & Jeffrey Rosenthalt

October 11
Alexandra & Jordon
Wertheimer

October 12
Joy & Marshall Kaplant

October 13
Beth & James Michelson Jr

October 14
Merrilee & Andrew Broder

October 16
Maxine & Daniel Lievois

October 18
Harriett & Sheldon Fuller
Debbe & Leon Saperstein
Lilly & Alex Stotland

October 19
Katie & Scott Kantor
Alexis & William Klemm
Jill & Michael Seltzer

October 20
Helen & Alexander Sorser
Sara & Greg Tatchio

October 21
Diane & Ralph Nunez

October 23
Patricia & Paul Ross
Elizabeth & Michael Sklar

October 24
Laura & Bruce Saperstein
Beth & Robert Sills

October 25
Erin & Todd Budisak
Marcia & Charles Lewis
Marilyn & Walter Wolpin

October 26
Betty & Irving Baron

October 27
Harriett & Leo Hollander
Audrey & Herbert Saperstein

October 28
Suzanne & Michael Gilsont
Jodi & Brett Panter
Sandra & Claude Reitelman

OCTOBER BIRTHDAYS

October 1
Jason Cooperman
Benjamin Kalt

October 2
Michael Gilson
Carol Kozlow
Margaret Meyer
Isabella Niskar
Seth Tompkins
S. Evan Weiner

October 3
Jeffrey Bednarsh
Joel Grand
Douglas Hamburger
Michael Klein
Meredith Orloff

October 4
Stephen Lerner
Rodney Saperstein

October 5
Howard Adelson
Kathryn Dresner
Michael Fishman
Joseph Novick
Caroline Wineman
Jane Wineman

October 6
David Hollander
Julia Hollander
David Risov

October 7
Norman Greenberg
Marilyn Gutmann
Max Kwartowitz
Randie Levin
Michael Margolis
Donald Simon
Mark Tarnowsky
Jeffery Viedert

October 8
William Davidson
David Farbman
Matthew Franklin
Herbert Gardner
Brian Lyngaas
Carol Schwartz

October 9
Robert Aronson
Austin Glass
Mark Koblin
Wyatt Weitz

October 10
Vivian DeGain
Stephen Hurwitz
Scott Kaplan
Scott Sills

October 11
Hannah Myers
John Rofel
Charlie Stamell

October 12
Lily Cahn
Madison Prohow

October 13
Edith Abrams
Carly Klein
Howard Maloff
Marjorie Siegel
Larry Woodberg

October 14
Andrea Dube
Samuel Katskee
Douglas Salzenstein
Alyssa Stone

October 15
Danielle Lutz
Frederick Minkow
Mark Schonberger
Jacob Stollman

October 16
Samantha Bienenfeld
Arthur Friedman
Jeff Rosen
Roman Sadikoff

October 17
Evelyn Bergman
Richard Gach
Ruby Glencer

October 18
Sabrina Dunn
Eli Foltyn
Evan Foltyn
Aaron Rosen
Sarah Solomon
Susan Trigger

October 19
Max Kaplan
Maya Saperstein
Rose Sher

October 20
Amy Rosenfeld
Arnold Shapero
Tuesday Strasberg

October 21
Brett Chasnick
Ilissa Chasnick
Cindy Cohen
Ethan Davidson
Bernard Remer
Paul Renusch
Eric Scher

October 22
Milton Simmons
Ari Sklar

October 23
Marshall Kaplan
Jeannette
MacWilliams
Michael Nedelman

October 24
Sarah Fearon
Rachel Fenberg
Rochelle Nelson
Lindsey Scharg
Craig Zucker

October 25
Hellen Cohen
Emmett Glass
Logan Grant
Barry Lepler
Maxwell Morganroth
Elaine Stern
Leah Zeman

October 26
Shae Adelson
Lucie Giron
Randy Harwood
Alfred Kreindler
Eric Phillips
Margery Reinheimer
Stephanie Walls

October 27
Donald Dreyfuss
Jacob Eisenstein
Judy Kotzen
Linda Ross

October 28
Leonard Beigler
Ethan Kasle
Alli Margolis

October 29
Miles Grant
Scott Jacobson
Joshua Tompkins

October 30
Stacy Goldberg
Dennis Green
Paige Lievois
Suzanne MacWilliams
James Pauli

October 31
Mark Cohn
David Fireberg
Noah Hackman
Rachel Hollander
Lynn Jacob
Hannah Kaplan
Tatum Kreindler
David Lane
Spencer Partrich
Leslie Rose
Jacqueline Ross
Charlotte Rubinstein
Edward Schonberg
Stuart Stoller
Liam Weckstein

GIVING OPPORTUNITIES...

Tzedakah (righteous giving) is one of the oldest and most strongly held principles of Judaism. One way to perform tzedakah is donating to one of the Temple's various tribute funds to honor or remember a loved one or friend. Others include:

● Purchasing a *Simchah* Leaf

● Memorializing a loved one with a *Yahrzeit* Plaque

● Honoring a loved one with a dedicated bench, adorned with an engraved plaque

● Dedicated one of the 18 tribute trees we have planted on Temple grounds.

For more information on any of these opportunities, please contact TBE Executive Director, Kim Raznik at kraznik@tbeonline.org or 248.851.1100.

OCTOBER 2016

SUNDAY	MONDAY	TUESDAY	WEDNESDAY	THURSDAY	FRIDAY	SATURDAY
Erev Rosh HaShanah SUNDAY, OCTOBER 2 EVENING SERVICE 8:00 pm Rosh HaShanah Day MONDAY, OCTOBER 3 YOUNGER CHILDREN'S SERVICE 9:15 am Sanctuary (0-6+) OLDER CHILDREN'S SERVICE 9:15 - 10:00 am Chapel (7-12)	9:45 am – donuts/cider in Handleman Hall for families. MORNING SERVICE 10:30 am in the Sanctuary TEEN EXPERIENCE 3:00 pm - Franklin Cider Mill TASHLICH 3:30 pm - Franklin Cider Mill Kol Nidre TUESDAY, OCTOBER 11 8:00 pm	Yom Kippur WEDNESDAY, OCTOBER 12 YOUNGER CHILDREN'S SERVICE 9:15 am Sanctuary (0-6+) OLDER CHILDREN'S SERVICE 9:15 - 10:00 am Chapel (7-12) 9:45-10:15 am – Craft project in Handleman Hall for families.	MORNING SERVICE 10:30 am in the Sanctuary LEARNING WITH RABBI BRUDNEY 1pm in the Chapel BROTHERHOOD YOM KIPPUR PROGRAM 1:45 pm 1/3 hall REFLECTIONS MUSICAL INTERLUDE 2:30 pm Sanctuary	AFTERNOON SERVICE 3:30 pm TEEN EXPERIENCE 3:30 – 4:30 pm YIZKOR & CONCLUDING SERVICE 4:30 pm Sanctuary, then front Patio THE COMPLETE HIGH HOLY DAY SCHEDULE CAN BE FOUND ON PAGE 13.		1 9:00 AM Torah Study 10:30 AM Shabbat Services
2 EREV ROSH HASHANAH 9:30 AM Sunday Minyan 8:00 PM Rosh Hashanah Services	3 ROSH HASHANAH <i>Admin Offices Closed</i> 9:15 AM Children's (0-6) 9:15 AM Children's (7-12) 9:45 AM Donuts & cider 10:30 AM Rosh HaShanah Services 3:00 PM Teen Experience 3:30 PM Tashlich	4	5 9:30 AM Torah Study w/Lea Beurer 10:30 AM Advanced Hebrew w/Lea Beurer 12:45 PM Melton Education 4:30 PM B'nai Mitzvah Club 7:00 PM Adult B'nai Mitzvah	6	7 9:15 AM Temple Tots 6:00 PM Shabbat Services	8 9:00 AM Torah Study 10:30 AM Shabbat Services
9 8:30 AM B'nai Mitzvah Club 9:00 AM Brotherhood Breakfast 9:30 AM Sunday Minyan Religious School 9:45 AM Yoga 10:30 AM Women of TBE Board Meeting NOON JBety	10 <i>Columbus Day</i> 6:00 PM Monday Night School	11 KOL NIDRE <i>Admin Offices Close at 1pm</i> 8:00 PM Kol Nidre Services	12 YOM KIPPUR 9:15 AM Children's (0-6) 9:15 AM Children's (7-12) 10:30 AM Yom Kippur Services 1PM Rabbi Brudney 1:45 PM Brotherhood 2:30 PM Reflections 3:30 PM Afternoon Service 3:30 PM Teen Experience 4:30 PM Yizkor	13	14 9:15 AM Temple Tots 6:00 PM Shabbat Services	15 9:00 AM Torah Study 10:30 AM Shabbat Services 5:30 PM Havdalah Service Bar Mitzvah of Rose Sher
16 8:30 AM B'nai Mitzvah Club 9:00 AM Brotherhood Breakfast with Speaker 9:30 AM Sunday Minyan Religious School 1:00 PM Mishpachah 4:30 PM Sukkot Festival	17 SUKKOT <i>Admin Offices Closed</i> 6:00 PM High School Seminar 6:00 PM Monday Night School	18 SUKKOT 7:00 PM TBE Choir rehearsal	19 SUKKOT 9:30 AM Torah Study w/Lea Beurer 10:30 AM Adv. Hebrew w/Lea Beurer 4:30 PM B'nai Mitzvah Club 7:00 PM Adult Sukkot Celebration Adult B'nai Mitzvah	20 SUKKOT 6:00 PM Council of Past Presidents 7:15 PM Board of Trustees	21 SUKKOT 9:15 AM Temple Tots 6:00 PM Shabbat Services and 7th Grade Shabbat Dinner	22 SUKKOT 9:00 AM Torah Study 10:30 AM Shabbat Services 5:30 PM Havdalah Service Bar Mitzvah of Evan Cardew
23 SUKKOT 8:30 AM B'nai Mitzvah Club 9:00 AM Brotherhood Breakfast 9:30 AM Sunday Minyan Religious School 10:00 AM Masoret 5:00 PM Simchat Torah with Consecration	24 SIMCHAT TORAH <i>Admin Offices Closed</i> 10:30 AM Yizkor & Plaque Dedication Shemini Atzeret/Simchat Torah 6:00 PM Monday Night School	25 7:00 PM TBE Choir rehearsal	26 9:30 AM Torah Study w/Lea Beurer 10:30 AM Adv. Hebrew w/Lea Beurer 12:45 PM Melton Class 4:30 PM B'nai Mitzvah Club 7:00 PM Women of TBE Opening Program & Speaker 7:00 PM Adult B'nai Mitzvah	27	28 9:15 AM Temple Tots 6:00 PM Shabbat Services	29 9:00 AM Torah Study 10:30 AM Shabbat Services Bar Mitzvah of Joshua Tompkins
30 8:30 AM B'nai Mitzvah Club 9:00 AM Brotherhood Breakfast 9:30 AM Sunday Minyan Religious School 11:30 AM Youth Choir Rehearsal Noon Teen Soup Kitchen	31					

Sponsor an Oneg!



*The Perfect Ending to any
Shabbat Service...
Enjoying Food With
One Another*

Each Friday evening & Saturday morning, following services, we gather together to share in the Oneg Shabbat or Kiddush. Please consider supporting this festive gathering with a donation to the Oneg/Kiddush Fund.

To sponsor an Oneg or Kiddush contact Marianne Myers at 248.851.1100 or mmyers@tbeonline.org.

WE WISH TO THANK

RITA PACKARD

for her gracious sponsorship of the Kiddush Saturday, October 22, in honor of her 80th Birthday!

FRIDAY, SEPTEMBER 30

6:00 PM Shabbat Services

SATURDAY, OCTOBER 1

9:00 AM Torah Study
10:30 AM Shabbat Services
Torah Reader: Debbie Morosohk

FRIDAY, OCTOBER 7

6:00 PM Shabbat Service

SATURDAY, OCTOBER 8

9:00 AM Torah Study
10:30 AM Shabbat Services
Torah Reader: Rabbi Megan Brudney

FRIDAY, OCTOBER 14

6:00 PM Shabbat Service

SATURDAY, OCTOBER 15

9:00 AM Torah Study
10:30 AM Shabbat Services
5:30 PM

Bat Mitzvah of Rose Sher Havdalah Service



Rose is an eighth grader at Derby Middle School where she is a national honor's student and volunteers her time helping students with special needs through the Birmingham Links program. She is a voracious reader and a great admirer of the fine arts. Her theatrical career includes both leads and supporting roles split between school productions, local community theater and Walden summer camp in Cheboygan, Michigan. Rose, an entrepreneur at heart, has carved out a Mitzvah Project that plays to her strengths. She will be selling Arbonne products and donating all profits to Forgotten Harvest, a local organization that provides meals to hungry Metro Detroiters. Her goal is to provide 5000 meals by her Bat Mitzvah date. Rose is the daughter of Michael & Julie Sher, the sister of Mollie and Lucy, and the granddaughter of Michael Sherbin, Robert Sher, Jan Fineman and Ann Sherbin.

FRIDAY, OCTOBER 21

SUKKOT

6:00 PM Shabbat Service
7:00 PM 7th Grade Family Shabbat

SATURDAY, OCTOBER 22

SUKKOT

9:00 AM Torah Study
10:30 AM Shabbat Services
5:30 PM

Bar Mitzvah of Evan Jonah Cardew Havdalah Service



Evan is an 8th grader at Norup International School where he sings in the choir and plays for the tennis team. He enjoys playing basketball, tennis and golf. Evan is an exotic car aficionado and recently attended the Councours d'Elegance car show in Pebble Beach, California. For his Mitzvah Project, Evan volunteered prepping and serving food at two soup kitchens and worked as a jr. ranger at a golf outing benefitting Cornerstone Schools in Detroit. Evan is the son of Jay & Allison Cardew, the brother of Hannah and the grandson of Barbara Shapiro, Sandra Cardew and the late Warren Cardew and Harvey Shapiro.

FRIDAY, OCTOBER 28

6:00 PM Shabbat Service

SATURDAY, OCTOBER 29

9:00 AM Torah Study
10:30 AM Shabbat Services



Bar Mitzvah of Joshua Tompkins

Josh is a 7th grade student at Orchard Lake Middle School in West Bloomfield. He is an active member of the First Lego League, a competitive robotics program. Josh enjoys playing the clarinet, reading and caring for animals. For his Mitzvah Project, he worked with his cousin, Kimberly Gurwin, to raise money for the Almost Home Rescue Shelter. Josh is the son of Amanda and Seth Tompkins, brother of Jacob Tompkins, grandson of Jill & Howard Gurwin and Carolyn & Stuart Tompkins.



TEMPLE
BETH EL

7400 Telegraph Road
Bloomfield Hills, Michigan 48301
www.tbeonline.org
248.851.1100

Periodicals
Postage Paid at
Royal Oak, MI

TIME VALUED

CLERGY

Mark Miller, Senior Rabbi
Rachel Gottlieb Kalmowitz, Cantor
Megan Brudney, Assistant Rabbi
Daniel B. Syme, Rabbi Emeritus
John Redfield, Honorary Cantor Emeritus

STAFF

Kim Raznik, Executive Director
Deborah Morosohk, RJE, Director of Education
Claire Danaher, Chief Financial Officer
Allan N. Friant, Sr., Building Superintendent
Susie Weiner, Director of Early Childhood Center
Danielle Gordon, Program Director
Joseph Unger, Director of Youth Engagement
Marie Curtis, Senior Graphic Designer
Brett Panter, Digital Media Coordinator
Alan Lowen, B'nai Mitzvah Coordinator
Jim Gabriel, Accompanist
Jan Durecki, Archivist
Joe Winter, Cemetery Superintendent
Morris Collins, Reception/Security
Thomas Jablonski, Executive Director Emeritus

OFFICERS

Jordon Wertheimer, President
Robin Fenberg, Vice President
David Foltyn, Vice President
Maxine Lievois, Vice President
Warren Rose, Vice President
Adam M. Lutz, Treasurer
Liz Modell, Secretary

AFFILIATES

Elaine Brockman, Beth Elders
Julian Prince, Brotherhood
Elaine Schonberger, Women of Temple Beth El
Forest Wolfe, The Kid-ish Club
Max Richardson, Beth El Temple Youth (BETY)

The Joys of Community at TEMPLE BETH EL Family Programming

Monthly Mishpachah

SUNDAYS ONCE A MONTH / 1 - 3 PM

New option for kindergarten and 1st grade Religious School students. Engaging & interactive learning for adults and children.

October 16 / November 13 / December 18 / January 22
February 26 / March 19 / April 23

Small Fri Shabbat

FRIDAY EVENINGS / 5:30 PM

Songs, blessings, & dinner for families. 0-6 years old.

November 11 / December 9 / January 13 / March 10 / May 12

Kabbalat Shabbat

FRIDAY EVENINGS / 6 PM

Music, dinner & fun activities for families. Elementary aged children.

November 18 / December 16
January 20 / February 17
March 17 / April 21 / May 19

Tot Shabbat

SATURDAY MORNINGS
9:30 AM

A fun, musical morning experience for families with children. 0-6+ years old.

November 5 / December 3
January 7 / February 4
March 4 / April 1 / May 6