

the Bulletin

VOL. 33 ISSUE 3

NOVEMBER 2018
HESHVAN 5779



TEMPLE-WIDE HANUKKAH MUSIC SHABBAT pg. 12



TORAH STUDY AT TBE

Saturday mornings,
9:15-10:15 am in the Library

Torah study is a vital part of Jewish life – and here at Temple, we are proud of many opportunities to learn together! Whether you are experienced at interpreting the words of Torah, or are interested in taking a first look at what Torah can offer ... our weekly Torah study is for you! Come as often as you like (or just drop by one week) for tasty bagels, hot coffee, and a stimulating discussion led by our Rabbis or Educator.

Enjoy a little time with friends and the wisdom of our tradition – we are confident you will walk away with insight into the jewels of wisdom and practical advice to be found within our *parashah* (weekly Torah reading). Feel free to contact the Rabbis' Study for more information.

Most weeks throughout the year, in addition to our TBE Torah Study, our lay-led Bible study will continue in the Board Room at 9:00 am on Saturdays – join Dr. Charles Greenberg for a more advanced analysis of some of the incredible books in our Bible that follow the Torah.

CLERGY COLUMN

A MESSAGE FROM RABBI MILLER



When I was ordained as a rabbi, one of my favorite moments occurred when my class marched into the sanctuary at Wilshire Boulevard Temple in Los Angeles. Each of us carried a Torah, and our mentors at HUC-JIR (the Reform seminary) had asked us to roll it to the specific verses that held the most meaning for us.

What a daunting task! How could I possibly select just one section from Torah, and hold it above the rest? I began with about 15 passages, and felt terrible guilt when I started crossing them off one-by-one. There goes the 10 Commandments ... there goes Abraham bargaining with God ... there goes the Holiness Code, and "justice, justice shall you pursue," and the story of Creation!

Eventually, I found myself staring at Deuteronomy 29:13-14 ... "I make this covenant, with its sanctions, not with you alone, but both with those who are standing here with us this day before Adonai our God and with those who are not with us here this day."

Eventually, I found myself staring at Deuteronomy 29:13-14 ... "I make this covenant, with its sanctions, not with you alone, but both with those who are standing here with us this day before Adonai our God and with those who are not with us here this day."

This text comes from a powerful moment near the end of the Torah when the entire assembly of the Children of Israel stood before God to enter into the *brit* (covenant). Most commentators understand these particular words to mean that God's *brit* is made with the generation that stood on the banks of the Jordan River that day, prepared to enter into the Promised Land ... and also with their descendants. Even though we were not there to sign our names on that contract of Jewish living, we are inheritors of the *brit* and it applies, fully, to us as well.

But I wonder if these words may hint at something else. "Those who are not with us here this day." Perhaps long ago, Moses faced some of the same concerns that plague us today. What if it wasn't the entire people standing there, but just the affiliated ones? Or what if some of the "members" were home in their tents, searching for dinner, or just hiking along the Steppes of Moab? All of them were part of the *brit*, and every Jewish person deserves to reap the benefits of Jewish life.

This is just the sort of fascinating insight that makes Torah study such a joy. And we will be in the Library every Saturday morning at 9:15 am with bagels and coffee, ready to invite you into an interactive discussion about the weekly Torah portion. I hope you'll join us, as we continue to build our own covenant right here at TBE!

Rabbi MARK MILLER
mmiller@tbeonline.org

CONTENTS

NOVEMBER 2018



» p. 4



» p.7



» p.17

4-5 ARCHIVES

6 SHARE YOUR STORY

7 KAYE & JAGODA WEEKEND

8-11 UPCOMING PROGRAMS & EVENTS

12 HANUKKAH CELEBRATION

13 ANNUAL APPEAL

19-21 LIFE CYCLES / YAHRZEIT / TRIBUTES

23 SHABBAT SCHEDULE



SEARCH
FOR THE

8

MENSCHES
HIDDEN
THROUGHOUT
THE
BULLETIN!

GLAZER ELEMENTARY SCHOOL

STAYING INVOLVED

In 1964, the Detroit Board of Education voted unanimously to name the newest school after Rabbi B. Benedict Glazer, the Rabbi of Temple Beth El from 1941–1952. Rabbi Glazer did amazing work in the Detroit community to build bridges and work with people from all different backgrounds to make the world a better place. Temple Beth El has taken great pride in the fact that the first time a Detroit school was named after a rabbi, that is was our very own Rabbi Glazer! Throughout the decades, Temple members have stayed involved at the elementary school. Some people have done after school programs while others participated in anniversary celebrations. The Glazer family also stayed deeply connected, and when Ada Glazer (Rabbi Glazer's wife) passed away, they named the library after her. Our connection with Glazer school and students continues today. See below for our holiday program.

LAURA WILLIAMS Curator
lwilliams@tbeonline.org



ADOPT-A-STUDENT

Throughout November and the first week of December we will be collecting gifts for each of the 200+ students at the Glazer school. We will then celebrate the holidays with an Ice Cream Party on Friday, December 14th, and deliver all the gifts!

Monetary donations are also being collected to assist with this endeavor.

If you are interested in adopting a student or two for the holidays, please contact Danielle Gordon at dgordon@tbeonline.org or 248.851.1100.



In May 1967, Glazer Elementary School held a dedication ceremony where some of the older students presented what they learned about Rabbi Glazer, here is some of what they had say:

B. Benedict Glazer...who was he?

You can know a man by studying the facts of his life.

We can tell you that he was born in Dallas, Texas.

The year was 1902. He spent his boyhood there. In 1926, he was ordained as Rabbi at the Hebrew Union College. He lived in Pennsylvania, New York and Michigan. He was married to the former Ada Spiegle of Pittsburgh. They had two children - Stephanie and Mark Jonathan. He died in 1952.

Yes, these are the facts of his life...and yet this but tells only part of the man, because a man is known by his work, also!

And Dr. Glazer was involved in many works.

He wrote brilliant papers of Judaism. He was an excellent speaker and an inspiring teacher. At Detroit he was Rabbi of Temple Beth El. Under his guidance the congregation grew to the fourth largest in the U.S. His work took him into the communities which he served. He was on so many committees that it's impossible to recall them all, so we'll just list a few. Let's see...In Detroit, he was President of the Wrangler's Club, President of the Wayne County Chapter of the Michigan Society for Mental Hygiene. He was founder and board member of the Michigan Committee on Civil Rights. He served as an advisor on the Civil Rights to Governor Williams. And those groups mentioned were only a few!

As Rabbi, Scholar, Husband, Father, Teacher, Friend - his influence was great. He helped men understand one another better. He inspired people to work for peace. By his example he showed all of us the ways to practice Truth, Charity and Tolerance.

How fitting that a school...a place where young hearts dwell...should be given his name. How honored we are to be students here - where we can - day by day, grow in mind and heart and accomplish his aims - to seek truth and to love our fellow man.

In the true spirit of Charity this school is his - and in being his it is ours - for his whole life was dedicated to sharing.



INTERESTED IN VOLUNTEERING AT GLAZER?

You can make a difference in a child's life when you become a volunteer at the Glazer School. Your assistance would be greatly appreciated!

For more information or to volunteer, contact Liz May at 248.855.1680.

SHARE YOUR *Story*

At Temple Beth El, we believe that sharing stories strengthens and unites us. We appreciate you taking a few minutes to share your story!

Please give us a call at 248.865.0613 and leave a message with a brief version of your story (no longer than 2 minutes). Stories should be about your own experience, and you are welcome to share your story even if you do not wish to meet with other people.

Feel free to respond to one of these prompts, or any topic that moves you:

JOURNEY...

TO PARENTHOOD

TO AMERICA

OF SELF-ACCEPTANCE

OF GRIEF

OF AGING

TO/WITHIN JUDAISM

OF ADDICTION

OF SERVING YOUR COUNTRY

OF NAVIGATING MULTIPLE CULTURES

OF BEATING THE ODDS

OF ABUSE

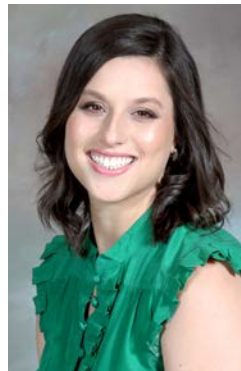
OF A DREAM COMING TRUE

TO WISDOM

THROUGH PHYSICAL CHANGE

UNITING US

SHARING



I was exhausted—the good kind of exhausted—and I was on a mission. It was the day after Rosh HaShanah, and I was about to check the voice mail on the Sharing Our Stories hotline I introduced with my erev Rosh Hashanah sermon. I was nervous—what if I threw a hotline and no one came? The phone came into sight...with red message light blinking. Yes!

That first day I received four messages from four brave souls—and between now and then I've heard from nearly 30 of you. You've shared experiences of aging, forced retirement, health scares, personal growth, death, suicide, abortion, infertility, single parenthood, professional success, finding a home at TBE, loss of a pet, premature birth. (Note: these are all real examples of messages I received!) My calendar is more packed than ever before with one on one meetings, the first step of sharing your story.

These meetings have been an amazing way to hear what really goes on in people's lives—in your lives. Some have been uplifting, some have had painful moments. Sometimes I get to discover a whole new aspect of a person I know fairly well; sometimes I meet someone face to face for the very first time. No matter what the tone or nature of the meeting, it has been my privilege to take this first step into your sacred storytelling.

If you haven't made the call — I invite you to pick up the phone now and call 248.-865.0613! I want to meet with you, to connect with you, and potentially to connect you to others with similar experiences. (Don't worry, that part is optional!) Let's mark your journey together.


Rabbi **MEGAN BRUDNEY**
mbrudney@tbeonline.org

KAYE and JAGODA

NOVEMBER 2nd- 4th @ TBE



MUSIC SHABBAT

FRIDAY, NOVEMBER 2 @ 7:00 PM

Featuring musicians-in-residence Elana Jagoda & Saul Kaye!
Oneg sponsored by Carolyn & Charles Greenberg

TOT SHABBAT: LET'S ROCK!

SATURDAY, NOVEMBER 3 @ 9:30 AM

Come enjoy rockin' interactive Shabbat singing led by
artists in residence Elana Jagoda and Saul Kaye!
Free and open to the community.

NOSH & KNOWLEDGE

SATURDAY, NOVEMBER 3 @ 12:30 PM

Led by musician-in-residence Saul Kaye

MASA CONCERT

SUNDAY, NOVEMBER 4 @ 11:15 AM

Exciting Masa concert involving our children.

AN EVENING OF BLUES

SATURDAY, NOVEMBER 3
7:00 PM @ TBE

Concert benefiting our music programming.

BBQ Dinner • Wine & Beer

\$50/person

\$180/patron ticket (preferred seating)

WEEKEND SPONSORS

Jo-Ann MacWilliams Wolf, Sue Green
and Jim Marks, Carol and Steve
Tarnowsky, and Sara and Greg Tatchio

MOST EVENTS FREE AND OPEN TO THE COMMUNITY

For more information or to purchase tickets, contact Cantor Rachel at rgk@tbeonline.org or 248.851.1100.

TBE UPCOMING PROGRAMS/EVENTS

NOVEMBER

TBE SUNDAY MORNING BREAKFAST



Enjoy a delicious breakfast prepared by Brotherhood.

EVERY SUNDAY WHILE MASA IS IN SESSION.

9:00 – 9:30 AM

FULL BREAKFAST \$3

BAGEL & BEVERAGE \$2



01 THE EMPOWERMENT OF WOMEN SISTERHOOD MEMBERSHIP EVENT

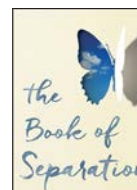
THURSDAY, NOVEMBER 1
7:00 PM

Temple Curator Laura Williams will speak on the empowerment of women from the past to current day, their contributions to our communities and how their actions changed lives. Join us and become inspired by these women as we look within ourselves to empower others. Free program for Sisterhood members (Membership may be paid at the door). \$10 for non-member guests. Dessert reception to follow. Please RSVP to TBESisterhoodevents@gmail.com

01 BITES & BOOKS

The Book of Separation: A Memoir
THURSDAY, NOVEMBER 1
10:00 AM/7:00 PM
By Tova Mirvis, Facilitated by Rabbi Megan Brudney

Born and raised in a tight-knit Orthodox Jewish family, Tova Mirvis committed herself to observing the rules and rituals prescribed



by this way of life. She married a man from within the fold and quickly began a family. But over the years, her doubts became stronger than her faith, and at age 40 she felt could no longer breathe in what had become a suffocating existence. Tova decides to leave her husband and her faith. This will mean forging a new way of life, not just for herself but for her children, who are struggling with what the divorce and her new status as "not Orthodox" will mean for them. For information contact Laura at lwiliams@tbeonline.org or 248.851.1100.

TBE TORAH STUDY

SATURDAY, NOVEMBER 3
9:15 AM (details pg. 2)

04 67TH ANNUAL JEWISH BOOK FAIR

We are Jewish Faces
by Debra B. Darvick
SUNDAY, NOVEMBER 4
2:00 PM (children ages 2-8)



Temple Beth El member and PJ Library Author, Debra B. Darvick leads an interactive reading and meaningful project. We are brothers, sisters, grandparents & friends. We are smiling, laughing, crying & cheering. We are all ages, colors, lifestyles & abilities. We are the face of Jewish life today. Co-sponsored by JFamily's PJ Library & jbabyydetroit!, JCC's Sarah & Irving Pitt Child Development Center, JCC Day Camps Powered by Tamarack, Temple Beth El.

KAYE AND JAGODA SHABBAT WEEKEND

FRIDAY, NOVEMBER 2 – 4
(details pg. 7)

LAWSON INSTITUTE WEEKEND
8TH – 12TH GRADERS
NOVEMBER 9 – 11

(details pg. 15)

TBE TORAH STUDY

SATURDAY, NOVEMBER 10
9:15 AM

(details pg. 2)



10

**LIBRARY SHABBAT
WITH TBE CHOIR**

SATURDAY, NOVEMBER 10
10:30 AM

Please join the Library Committee for a special Library Shabbat. We will be celebrating our 140th anniversary as the Temple Library! The Temple Beth El Choir will be singing and you are invited to be part of our "birthday" celebration with a cake at the *oneg*.

**TBE SUNDAY MORNING
BREAKFAST**

SUNDAY, NOVEMBER 11 (← details)

**BROTHERHOOD GUEST
SPEAKER**

SUNDAY, NOVEMBER 11
9:30 AM – 10:00 AM

**BUBBIE
ZAYDIE
TEMPLE**



11

**BUBBIE & ZAYDIE
TEMPLE TOTS**

SUNDAY, NOVEMBER 11
10:00 AM

Enjoy quality time with your grandchildren and create lasting memories. Meet in the ECC gym. Facilitated by an Early Childhood Educator. FREE & OPEN to the community. For more information, contact Deborah Morosohk at dmorosohk@tbeonline.org or 248.851.1100.

SISTERHOOD CASINO

Night



SATURDAY, NOVEMBER 17 @ 7 PM

ROULETTE • POKER • CRAPS

\$40: AGES 36 & UNDER, ECC FAMILIES, AND 75 & OLDER \$60: REGULAR TICKET

Texas Hold'em Tournament (\$25)

SNEAK PEEK CHANCE RAFFLE PRIZES

5th Tavern, California Pizza, Cripelli's Bakery Pizzeria, Detroit Pistons, Jax Kar Wash, Noodles & Company, Rusty Bucket, Smash Burger, Stage Deli, Maggiano's, Big Tommy's Parthenon & Comedy, Rainbow Restaurant, Ray's Ice Cream, Lee's Nails, and so much more!!!

**CONTACT CINDY BOLOKOFKY AT 248.431.8536
FOR SPONSORSHIP OPPORTUNITIES!**

Sisterhood Casino Night Registration Form

Name _____

Address _____

Phone _____ Email _____

PURCHASE TICKETS: \$40/person (36 and Under/ECC Family/75 and older)
\$60/person (regular ticket)

ADDITIONAL: \$25/person – Texas Hold'em Tournament

CREDIT CARD INFORMATION:

Card Number _____

Exp. _____ Sec Code # _____

Name on Card _____

Address (if different from above) _____

REGISTER ONLINE: www.tbeonline.org/casino-night-registration



Hosted by TBE Sisterhood at
Temple Beth El

PROCEEDS WILL BENEFIT THE CORNER
SHOWER AND LAUNDRY PROJECT
CORNERSHOWERANDLAUNDRY.ORG

*Purchase homemade
Hanukkah & Christmas
Cookies, and other
Baked Goods!*

Cookies (\$9 per pound)

Baked Goods (individually priced)

Gift Boutique Raffle Prizes

Bring for MEN - NEW packages of
underwear, socks, winter hats, gloves,
flip flops (for showering), and **RECEIVE A
COMPLIMENTARY RAFFLE TICKET!**

Monetary donations appreciated.



FREE AND OPEN TO THE COMMUNITY

For more information, contact
Sue Goldsmith at
mrssurplus@sbcglobal.net
or 248.626.3839.

UPCOMING PROGRAMS/EVENTS CONT.

NOVEMBER



**14 NATIONAL EPIDEMIC
OF YOUTH SUICIDE**
WEDNESDAY, NOVEMBER 14
11:30 AM - \$10 PP

Join the Beth Elders for a deli luncheon
followed by an important conversation with
Rabbi Daniel Syme on The National Epidemic
of Youth Suicide...how can YOU help? For
information or to RSVP: contact Danielle
Gordon at 248.851.1100 or dgordon@tbeonline.
org by November 9th.

**14 JEWISH NATIONAL
FUND'S COMMUNITY
DESSERT RECEPTION
HOSTED BY TBE**
WEDNESDAY, NOVEMBER 14
REGISTRATION 7:00 PM
PROGRAM 7:30 PM

Featuring Ethan Zohn: Inspirational Speaker
and Winner of Survivor Africa. No cost to
attend. RSVP by November 5th to: jnf.org/
detroit

**BRING IN THE LIGHT
SHABBAT & QUINQUENNIAL
ANNIVERSARIES**
FRIDAY, NOVEMBER 16
7:00 PM

TBE TORAH STUDY
SATURDAY, NOVEMBER 17
9:15 AM *(details pg. 2)*

CASINO NIGHT
SATURDAY, NOVEMBER 17
7:00 PM (\$) *(details pg. 9)*

K-5 MITZVAH DAY
SUNDAY, NOVEMBER 18
NOON *(details pg. 18)*

**MASORET: JOEL MILLER, M.D.
(RABBI MILLER'S FATHER)
"Can Our Thinking Make Us
Sick...or Make Us Healthier?"**
SUNDAY, NOVEMBER 18
10:30 AM *(details pg. 15)*



**18 JHSM AND THE
HENRY FORD
PRESENT: THROUGH
A JEWISH LENS**
SUNDAY, NOVEMBER 18
3:30 - 7:00 PM
THE HENRY FORD,
DEARBORN

Join temple members and the community
for a frank exploration of Mr. Ford's complex
relationship with the Jewish Community,
featuring Steven Watts, author of The People's
Tycoon: Henry Ford and the American Century.
Also included, rarely seen curated artifacts
from the museum's collection, all day access
to the Henry Ford Museum of American
Innovation™ and Greenfield Village, and a tour
of the special exhibit: Rockwell, Roosevelt &
the Four Freedoms. Refreshments provided.
For more information, call 248.432.5517 or visit
michjewishhistory.org.

DECEMBER



**20 INTERFAITH
THANKSGIVING**
TUESDAY, NOVEMBER 20
AT KIRK IN THE HILLS
6:00 – 8:00 PM

Join us for an interactive program followed by a beautiful service – with Kirk in the Hills, Christ Church Cranbrook, Muslim Unity Center, and St. Hugo's. For more information, contact Kirk in the Hills at 248.626.2515.



**28 KNITTING, CRAFTS
AND LAUGHS**
WEDNESDAY, NOVEMBER 28
5:00 PM

Meet and socialize with knitters and crafters in the Prentis Memorial Library! For more information, contact Helen Sorser at 248.789.7087 or Lynn Sheeran at folk-lynn@yahoo.com.



29 MOVIES & MUNCHIES
THURSDAY, NOVEMBER 29
1:00 PM

Join us for a fun new program that takes advantage of our terrific new smart TV in the Prentis Memorial Library: Movies & Munchies! Alternating months with the Bites & Books program, Movies & Munchies will show movies, old and new. For more information or to register, please contact Laura Williams, Curator at 248.851.1100 or lwilliams@tbeonline.org.

TBE TORAH STUDY

SATURDAY, DECEMBER 1

9:15 AM

(details pg. 2)

**JBETY – DEFY DETROIT IN
COMMERCE**

SATURDAY, DECEMBER 1

6:30 PM – 8:00 PM

(details pg. 15)

SISTERHOOD COOKIE WALK

SUNDAY, DECEMBER 2

10:00 AM – 1:00 PM

(details)

HANUKKAH LUNCHEON

THURSDAY, DECEMBER 6

11:30 AM

(details back cover)

**TEMPLE-WIDE HANUKKAH
MUSIC SHABBAT with
YOUTH CHOIR**

FRIDAY, DECEMBER 7

6:00 – 6:45 PM – Service

6:45 – 8:30 PM – Food, fun and games

(details pg. 12)

TBE TORAH STUDY

SATURDAY, DECEMBER 8

9:15 AM

(details pg. 2)

**10 SISTERHOOD ROSH
CHODESH EVENT**

MONDAY, DECEMBER 10

7:00 PM

Come join the Sisterhood and learn about this special day celebrated by Jewish women each month. Contact Sue Green at suegreen1@comcast.net for more information.

**KNITTING, CRAFTS AND
LAUGHS**

WEDNESDAY, DECEMBER 12

5:00 PM

(details)

**GLAZER SCHOOL
ICE CREAM PARTY**

FRIDAY, DECEMBER 14

1:30 PM

(details pg. 4)

TBE TORAH STUDY

SATURDAY, DECEMBER 15

9:15 AM

(details pg. 2)

16

**MASORET: JULIE
FELDMAN MPH, RD**
**Achieving Wellness
through Nutrition**
SUNDAY, DECEMBER 16
10:30 AM



This presentation will provide a realistic approach to creating a healthful diet informed by basic Jewish principles of wellness and the latest nutrition research. Participants will leave with an enhanced understanding of how to read labels, insight into why we make the choices we do when it comes to food, and how to appropriately build meals and snacks that will fuel them throughout their day. Recipes and grocery lists will make using this new information a snap!

BETY35 BOWLING

SUNDAY, DECEMBER 16

NOON

(details pg. 15)

TBE TORAH STUDY

SATURDAY, DECEMBER 22

9:15 AM

(details pg. 2)

TEMPLE-WIDE

HANU KKAH

MUSIC SHABBAT WITH YOUTH CHOIR

DECEMBER 7

6:00 - 6:45 PM

MENORAH LIGHTING & SERVICE

Bring your menorah to light!

6:45 - 8:00 PM

**LATKE BAR & APPETIZERS
DREIDEL CONTEST & PRIZES
COOKIE DECORATING**



GIFT WRAPPING STATION

Bring your unwrapped holiday gifts for our
Glazer Adopt-A-Student program.

TBE will be delivering the gifts on
December 14 and celebrate the holidays with
an ice cream party at Glazer School.

Please contact Danielle for gift wish list.

For more information, contact Danielle at
dgordon@tbeonline.org or 248.851.1100



2018 TBE ANNUAL APPEAL PLEDGE CARD

SUPPORT LEVELS

- ☐ \$10,000 + Guardian
- ☐ \$5,000 – \$9,999 Benefactor
- ☐ \$2,500 – \$4,999 Leadership Circle
- ☐ \$1,000 – \$2,499 Sponsor
- ☐ \$500 – \$999 Advocate
- ☐ \$18–\$499 Chai

I/we want to ensure TBE's future
by giving \$ _____

I/we (name) _____

Enclosed \$ _____

Please list recognition as: _____

or () Anonymous

I/we wish to pay by:

() VISA () MASTERCARD () AMEX
() CHECK () BILL ME

- **CREDIT CARD:** Incurs a mandatory non-refundable 3% convenience fee
- **DEBIT CARD:** No convenience fee

Account # _____

Exp _____ Sec Code # _____

() Electronic Check (ACH) –
no convenience fee

Name(s) on account: _____

Accounting type:
() Checking () Savings

Bank Name _____

ABA routing # _____

Account # _____

Please mail form and payment to:
Temple Beth El
Attention: Annual Appeal
7400 Telegraph Road
Bloomfield Hills, Michigan 48301



2018 ANNUAL APPEAL



GIVE. SHARE. GROW.

Your participation is critical in
helping us meet the needs of our
thriving congregation.

On behalf of our clergy, staff, and Board, we hope you enjoyed your High Holiday season and, once again, wish you a sweet and healthy year in 5779. Our Beth El team continuously strives to make our Temple modern and relevant, while keeping hold of our rich traditions and Jewish roots. Our year is filled with exciting programs and education, meaningful worship and musical events, neighborhood outreach, social gatherings, and so much more ... TBE's future is bright!

As members of Temple's Executive Committee, it is our goal to maintain the financial resources necessary to support all the inspiring opportunities taking place here. Membership dues are vital, but they only cover approximately one-third of our costs. Each year we turn to you, our Temple family, to help us meet the needs of our thriving congregation.

This year, we would be grateful if you could join us in supporting Temple with a gift to the Annual Appeal. By now, you should have received your Annual Appeal Letter and pledge card (see side bar) in the mail. Simply complete your pledge card and send it back in the return envelope provided.

We feel extremely honored to serve this historic congregation, and look forward to a year of growth, innovation, kindness, and holiness.

If you have any questions about the Annual Appeal or Temple in general, feel free to contact our new Executive Director, Daniel Mesa, at dmesa@tbeonline.org or 248.865.0636.

*For special arrangements or to pay in monthly installments
please call Claire Danaher at 248.865.0617.*

THANK YOU IN ADVANCE FOR YOUR GENEROSITY!

LIZ MODELL
President

MAXINE LIEVOIS
Vice President

LORIE KESSLER
Vice President

WARREN ROSE
Vice President

ALEX STOTLAND
Vice President

ADAM M. LUTZ
Treasurer

ROCHELLE NELSON
Secretary

JORDON
WERTHEIMER
Past President



ECC SHABBAT IN THE SUKKAH

SEPTEMBER 28

We had a fabulous time shaking the *lulav* and *etrog* in our new gorgeous Sukkah. Our ECC families filled the Sukkah to the brim even though we just got a bigger one this year. Thank you for joining us for a beautiful Shabbat morning!

UPCOMING EVENTS

NOVEMBER

THURSDAY, NOVEMBER 1
NO SCHOOL
JEWISH EDUCATORS CONFERENCE

WEDNESDAY, NOVEMBER 21 –
FRIDAY, NOVEMBER 23
NO SCHOOL
THANKSGIVING BREAK

DECEMBER

WEDNESDAY, DECEMBER 5 • 6:00 – 7:00 PM
ECC HANUKKAH PROGRAM

MONDAY, DECEMBER 24 – FRIDAY, JANUARY 4
NO SCHOOL
WINTER BREAK

JANUARY

MONDAY, JANUARY 7
SCHOOL RESUMES

MONDAY, JANUARY 21
NO SCHOOL
MLK DAY & TU BISH'VAT FAMILY PROGRAM

WEDNESDAY, JANUARY 30 • 1:30 – 7:00 PM
TEACHER CONFERENCES
SCHOOL CLOSING AT 12:30 PM

FEBRUARY

THURSDAY, FEBRUARY 7
SHOP, SCHMOOZE & SHAVASANA

MONDAY, FEBRUARY 18 – FRIDAY, FEBRUARY 22
NO SCHOOL
MID-WINTER BREAK

MONDAY, FEBRUARY 25
CLASSES RESUME

For information, please contact Jen at
jgoren@tbeonline.org or 248.851.1100.





MASA GRAND OPENING

SEPTEMBER 23

Thank you to ... the wonderful teachers and Madrichim who welcomed everyone with warmth and enthusiasm; families who brought lots of spirit; Brotherhood for a delicious breakfast, and most of all our amazing students who make every Sunday special as they continue on their Jewish journeys.

UPCOMING EVENTS

NOVEMBER

NOVEMBER 9 – 11

LAWSON GOES TO GRAND RAPIDS!

\$250 PER TEEN – ALL INCLUSIVE

For more information or to RSVP, contact Scott at slowen@tbeonline.org or 248.851.1100.

SUNDAY, NOVEMBER 18 • 10:30 – 11:30 AM

MASORET: JOEL MILLER, M.D. (RABBI MILLER'S FATHER) "CAN OUR THINKING MAKE US SICK... OR MAKE US HEALTHIER?"



This new field of mind-body medicine is quite exciting. Research has shown us that our attitudes and general mindset can directly affect our immune system. And we need a healthy immune system to prevent illness as well as maximize our state of wellness. What are some strategies to live happier and healthier lives? Can a more peaceful mind affect illness?

SUNDAY, NOVEMBER 18 • NOON

K-5 K'HILAH CLUB MITZVAH DAY *(details pg. 18)*

DECEMBER

SATURDAY, DECEMBER 1 • 6:30 PM – 8:00 PM

JBETY – DEFY DETROIT IN COMMERCE

DINNER INCLUDED (6th – 8th Graders)

Join your friends for an amazing afternoon of fun. Trampolines to foam pits, parkour to the ninja course! For more information or to RSVP, contact Scott at slowen@tbeonline.org or 248.851.1100.

FRIDAY, DECEMBER 14 • 5:30 PM – 8:00 PM

4TH/5TH GRADE FAMILY PROGRAM

SUNDAY, DECEMBER 16 • NOON (3rd–5th Graders)

BETY35 BOWLING



K-5 K'hilah Club is programming for Elementary-aged kids and families. The K-5 family programming is community-building events for all kids and families in Kindergarten through 5th grade.



The BETY35 youth programming is fun drop-off events for the 3rd through 5th graders with Director of Youth Engagement, Scott Lowen.





SUSHI IN THE SUKKAH

SEPTEMBER 27

Our adult Sushi in the Sukkah event was a great success with Streetside Sushi, snacks, and a casual gathering on a beautiful evening.



SUKKOT PICNIC

SEPTEMBER 23

TBE members had a blast celebrating Sukkot in our brand new sukkah! During this year's temple-wide picnic, we made decorations for the sukkah, and families came together for games and fun!



FIRST ANNUAL BARK MITZVAH

OCTOBER 14

39 dogs, 1 cat, and their two-legged friends enjoyed a gorgeous afternoon together full of treats, blessings, and fun. A very special thank you to Dr. Lucy Henney and Oakland Veterinary Referral Services for sponsoring this wonderful event.



"The Bark Mitzvah was a very fun event because everyone was so happy. I read that it was for 'four-legged friends', so I brought my cat, Liam. We both enjoyed meeting all the dogs".

- **Michaela Kolchinsky**

"It was barktastic!"
- **Sarah Ostheimer**



TOT SHABBAT: NOAH'S LIVE SAFARI!

OCTOBER 13

We loved having so many families join us for our live animal show! We met and got to touch a groundhog, a tortoise, some sugar gliders, and a giant snake. We can't wait until Noah's Ark comes around again next year!



"We brought our two sons, Elan (4) and Jacob (2) who are students in the ECC. They were so intrigued interacting with the animals and loved sharing the experience with so many friends from school.

All weekend Jacob talked about the "nake" (snake) and "too-tle" (turtle). It was a huge hit!"

-Gillian Tamaroff



SAVE THE DATES!



TOT SHABBAT



LET'S ROCK!

WITH KAYE & JAGODA

SATURDAY, NOVEMBER 3
9:30 AM

Come enjoy rockin' interactive Shabbat singing led by artists in residence Elana Jagoda and Saul Kaye!

FREE AND OPEN TO THE COMMUNITY



K-5 MITZVAH DAY

SUNDAY, NOVEMBER 18
NOON

For families with children in grades K through 5, join K-5 K'hilah Club for lunch and working with **Project Linus** to make blankets for kids in local hospitals. Let's model and embody *Tikkun Olam*, repairing the world, for our children, and build a stronger K-5 community in the process. Sponsored by Alicia and Jeff Chandler.

\$5 PIZZA LUNCH

RSVP by Nov. 12 to Cantor Rachel at rgk@tbeonline.org or 248.851.1100.

K-5 BINGO FUNDRAISER!

OCTOBER 14

Approximately 20 families gathered on Sunday after Masa for 5 rousing games of Bingo. Excited winners received prizes generously donated by Toyology. Handleman Hall was abuzz with community, food, and fun. Thanks to K-5 K'hilah Club chair Natalie Shirley, event chairs Traci Feldman and Melissa Schiller, and our entire K-5 Committee for their support. Keep your eyes open for another Bingo event next fall!



RABBI BRUDNEY DISCRETIONARY FUND

IN MEMORY OF

SADIE ESPAR

David Espar

IN HONOR OF

APPRECIATION OF RABBI BRUDNEY

Herb & Audrey Saperstein

WEDDING OF

RABBI BRUDNEY & ZACH BERG

Helayne & Joseph Levy

RABBI LEO M. FRANKLIN ARCHIVES FUND

IN HONOR OF

RECOVERY OF MYRLE LELAND

Phyllis Kaplan

STUART G. GARSON MEMORIAL SCHOLARSHIP FUND

IN MEMORY OF

CARRIE GERSON

Dorothy Gerson

GENERAL OPERATING FUND

IN MEMORY OF

ALLEN C. GROSS

Carl Gross

ALVIN WAGNER

Vicki Mansfield

BORIS ROZENBLAT

Dr. Jeffrey Stutman

LILLIAN ERDELJAN

Aleksandar Erdeljan

OLGA STUTMAN

Dr. Jeffrey Stutman

A DONATION

Shirlee Marshall

THE MICHELSON-HABER MEMORIAL FUND

IN HONOR OF

HAROLD JOSEPHSON'S

85TH BIRTHDAY

Mr. & Mrs. Jonathan Haber

MAX & HERMINE HAMBURGER LIBRARY MEMORIAL SHELF

IN MEMORY OF

IRWIN HAMBURGER, OUR BELOVED

FATHER AND GRANDFATHER

Love, Daughter MernaLyn

Grandson Billy

PAUL & SONIA HANDLEMAN MEMORIAL FUND

IN HONOR OF

JIM MARKS, BEST WISHES FOR

A COMPLETE AND SPEEDY

RECOVERY!

David & Rose Handleman

HOWARD & CELIA JACOBSON MEMORIAL FUND FOR THE BETH ELDERS OF TEMPLE BETH EL

IN MEMORY OF

BERTHA STEARN

The Beth Elders of Temple Beth El

RITA AGUILAR

David & Elaine Brockman

IN HONOR OF

SPEEDY RECOVERY OF

LOIS FREEMAN

SPEEDY RECOVERY OF AL FRIANT

WEDDING OF RABBI MEGAN

BRUDNEY & ZACH BERG

The Beth Elders of Temple Beth El

CANTOR RACHEL GOTTLIEB KALMOWITZ DISCRETIONARY FUND

IN MEMORY OF

BERTHA STEARN

The Family of Bertha Stearn

RABBI MILLER DISCRETIONARY/EXPENSE FUND

IN MEMORY OF

RUSSELL JAY GREEN

Linda S. & Robin Blumberg

ALI BASSIRPOUR

Mr. & Dr. Michael Bassirpour

IN HONOR OF

BABY NAMING OF

ASHTON BENKOFF

Mr. & Mrs. Dennis Green

THE BEAUTIFUL UNVIELING

CEREMONY OF

MARLENE GOODMAN

Harvey Goodman

RABBI MILLER'S THOUGHTFUL

CARE AT THE FUNERAL OF

BERTHA STEARN

The Family of Bertha Stearn

HARRY & SALLY NOSANCHUK CARING COMMUNITY FUND

IN MEMORY OF

CYRIL FELDMAN

DR SHELTON SIMONS

RACHAEL SIEGEL

Linda, Scott, Eric and Hilary Sircus

DR. ARNOLD AARON

MAURICE IRVING KURZMANN

MICHAEL BRODE

Harry Nosanchuk

IN HONOR OF

BIRTH OF BENNETT KERWIN

BIRTH OF GRANDSON,

BENNETT KERWIN

BIRTH OF GREAT-GRANDSON,

BENNETT KERWIN

Harry Nosanchuk
MARRIAGE OF ELYSE OBRON &
ARMAN GHOSH

SPECIAL BIRTHDAY OF

ELAINE SURNOW

SPECIAL BIRTHDAY OF

LOIS SHAEVSKY

SPECIAL BIRTHDAY OF

LORI WEISBERG

Linda, Scott, Eric and Hilary Sircus

RABBI DANIEL SYME DISCRETIONARY FUND

IN HONOR OF

RABBI SYME

George Chaney

TBE SENIOR STAFF MITZVAH FUND

IN MEMORY OF

BERTHA STEARN

Carl Corman, Sue Gold, Joyce

Herman, Beth & Carl Riseman,

Mickey & Bob Siegel, Mrs. Audrey

Zupmore, Ellen & Charles Daley,

Marla & Andrew Moiseev, Allen &

Roslyn Feld

CYRIL FELDMAN

Emilia Miller

IN HONOR OF

OUR 60TH WEDDING ANNIVERSARY

BLESSING AT TEMPLE

Myron & Joyce LaBan

TEMPLE BETH EL MITZVAH PROJECTS FUND

IN MEMORY OF

BERTHA STEARN

Deborah Harlie Siegel

MAMIE & JASON TICKTON MUSIC FUND

IN MEMORY OF

DAVID LEACH

Frayda Riger

TRIBUTE FORM

4 WAYS TO MAKE TRIBUTES

ONLINE: www.tbeonline.org/tributes

EMAIL: llucassian@tbeonline.org

Minimum contribution: \$18 per tribute. CONTRIBUTIONS ARE TAX DEDUCTIBLE

PHONE: Contact Laura Lucassian at 248.851.1100

MAIL: Temple Beth El, 7400 Telegraph Road, Bloomfield Hills, MI 48301

• Credit card transactions will incur a mandatory non-refundable 3% convenience fee. • No convenience fee for debit card transactions.

PLEASE PLACE MY CONTRIBUTION IN THE FOLLOWING FUND:

In Honor of: _____

In Memory of: _____

Enclosed please find \$ _____ or charge my ☐ credit ☐ debit card

_____ exp. date _____ sec. code _____

Name on card _____

SEND ACKNOWLEDGMENT TO:

Name: _____

Address: _____

City/State/Zip: _____

DONOR'S NAME: _____

Address: _____

City/State/Zip: _____

Phone: _____ Member _____ Non-member _____

HOW DO YOU WISH THIS TRIBUTE TO BE SIGNED? _____

BIRTHDAYS

OCTOBER 30

Jonah Canvasser
Dennis Green
Paige Lievois
Suzanne MacWilliams
Laura Saperstein
Cathy Segel

OCTOBER 31

Mark Cohn
Noah Hackman
Rachel Hollander
Lynn Jacob
Eleonor Jenks
Hannah Kaplan
Tatum Kreindler
David Lame
Myrna Partrich
Spencer Partrich
Leslie Rose
Charlotte Rubinstein
Edward Schonberg
Stuart Stoller
Liam Weckstein

NOVEMBER 1

Carol Coskey
Sarah Deitch-Persily
Lisa London
Camilo Ostheimer
Jacob Wolman

NOVEMBER 2

James Canvasser
Jillian Davis
Jacqueline Gordon
Wade Henney
Connor Rensusch
Marjorie Hecht Simon
Loren Weiner
Alan Werney

NOVEMBER 3

Ryan Bartholomew
Allison Farkas
Renee Jablonski
Robert Jampel
Deborah Lamm
Laurie Oberman
Tom Serowik
Debra Bernstein Siegel
Maurene Stein
Katherine Yaffe
Audrey Zupmore

NOVEMBER 4

Ambre Abbott
Ellen Kahn
David Lax
Sharon Maskin
Lynn Sheeran
Stephanie Sher
Ellen Siegel
Jodi Spilman

NOVEMBER 5

Jessica Brandt
Randall Fenton
Steven Freeman
Marla Gendelman-Bloch
Gilbert Plotnik
Hannah Sher

NOVEMBER 6

Steven Fink
Alan Goldberg
Tobi Greenspan
Alayna Hackman
Kay Mizell
I William Oberfelder
Robert Ross
Noah Salzenstein
Linda Stern
Taryn Stoller

NOVEMBER 7

Barbra Bloch
Claudia Coville-Curtidor
Dana Greenberg
Layla Harold
Andrea Hartman
Sandra Jacobowitz
Lauren Margolis
Mori Miller
Harriet Prentis
Jodie Stein
Alexander Stewart
Linda Wein
Brett Werner

NOVEMBER 8

Clifford DeVine
Daniel Dickey
Jack Geer
Christine Glasier
Adam Israel
Michael Kurtagh
Jocelyn Margolis
Brian Schiff

NOVEMBER 9

Isabel Genser
Osman Jacobson
Diana Lichterman
Nicole Mazur
Patrice Phillips
Andrew Powers
Judy Roberts
Marvin Salomon
Vivian Smargon-Cole
Norman Stern
Andrew Weiss
Alice Zacks

NOVEMBER 10

Barbara Cooper
Samantha Katz
Deena Lisak
Drew Lyngaas
Samuel Rice

NOVEMBER 11

Erin Budisak
Molly Foltyn
Pierre Fuger
Wyatt Kayne
Christopher Kovenich
Candice Toll

NOVEMBER 12

Mark Billes
Dale Frenkel
Lauri Hoffman
Matthew Hollander
Jack Kutinsky
Barry Marx
Rodman Myers
Benjamin Racklin
Joey Roberts
Ryan Rubens
Elliott Seeney

NOVEMBER 13

Jessica Abrams
Adina Blum
Mark Burnstein
Jordyn Goldstein
Leah Goldstein
Lindsay Grant
Cynthia Hecht
Mayer Hittleman
Aaron Lewis
Brian Litt
Lucille Miller
Joseph Schock
Lori Simon

Katie Simon
Charlotte Van House

NOVEMBER 14

Leo Cahn
Mark Cooperman
Crystal Edwards
Carl Gross
Ellen Levy
Edward Levy Jr
Eric Stein
Howard Wolpin

NOVEMBER 15

Noreen Aberly
Johanna Dunn
Sheryl Inwald
Jaclyn Issner
Philip Kessler
James Michelson Jr.
Julie Perlmutter
Tyler Ross

NOVEMBER 16

Ryan Gershenson
Sylvia Hamburger
Dana Kreis Glencer
Dana Holtz
Eve Izbicki
Clifford Katskee
Zinovi Kelman
Michael Levitsky
Mitchell Rotter
Andrew Rubinstein
Benjamin Werbling
Jane Zieck

NOVEMBER 17

Arlene Beaumont
Adam Boorstein
Erica Cahn
Eric Canvasser
Marc Dunn
Julie Genser
Holland Izbicki
Tia Linkner
Mark Panza
Emily Rits
Daniel Stein
Eric Wein
Bernice Behrmann
Paul Fearon
Karen Fenwick
Samuel Hayden Goodman
Ethan Holtz

Aaron Hull
Kimberly Mizell
Sarah Winsky

NOVEMBER 19

Bruce Kaczander
Rachel Kessler
Katie Klein
David Leib
Gwyneth Wineman

NOVEMBER 20

Cynthia Benson
Lilah Bolton
Karen Cherny
David Simon
Jeffrey Taub

NOVEMBER 21

Robert Bluestein
Jacob Drouillard
Max Izbicki
Nicole Kovenich
Steven Lewis
Emma Rothstein
Barbara Schiff

NOVEMBER 22

Michelle Behrendt
Carol Cohen
Peter Ellenson
Robert Greenstone
Deanne Josephson
Anna Kelman
Arielle Kulbersh
Brooke Lipsitz
Joshua Seligman
Heather Siegel
Arielle Stone

NOVEMBER 23

Nancy Bauser
Abigail Bice
Robert Dickstein
Heather Fisher
Michael Meredith
Herbie Jahr
Charles Lewis
Vincent Lipari
Harry Nosanchuk
Judith Pazol
Ella Shane
Jon Sloan
Michelle Stamler
Perry Stuart Tell
Laurence Wolf

NOVEMBER 24

Brad Elson
Lois Freeman
Rebecca Michelson

NOVEMBER 25

Alec Cohen
Jennifer Goren
Riley Graff
Maxine Lievois
Michael Lisak
Nathaniel Pernick
Elinor Weber

NOVEMBER 26

Shirley Bernstein
Jeffrey Goldberg
Louis Kravchenko
Blake Lipman
Norman Pappas

NOVEMBER 27

Dorothy Benyas
Domenika Ilyasov
Alicia Pearlman
David Stamler

NOVEMBER 28

David Feinbloom
Michael Fishman
Diane Gendelman-Nunez
Lori Grodan

NOVEMBER 29

Fran Goran
Wendy Hamburger
Jennifer Lindsey
Jeffrey Radin
Martin Ross
Erin Simmerman
Zachary Wein
Sandra Weitz

NOVEMBER 30

Aaron Brown
Deborah Canvasser
Cooper Dorfman
Ralph Gerson
Sunshine Izbicki
Amy Kessler
Audrey Saperstein
Joshua Shain
Stephen Weisberg
Scott Werner

NOVEMBER ANNIVERSARIES

NOVEMBER 1

Mary & Jonathon Aaron
Rita & Simon Rozenzweig

NOVEMBER 2

Bernice & Sherwin Behrmann
Jan & Thomas Purther

NOVEMBER 4

Suzanne & Corey Jacoby

NOVEMBER 5

Lori & Mark Cohn
Francie & Mike Fruitman
Kimberly & Gary Goodman
Julie & Billy Harris

NOVEMBER 6

Rhea & Robert Brody
Sarah & Matthew Rappaport
Hindi & Adam Wegard

NOVEMBER 7

Eva & David Chinsky
Marjorie & Michael Federman

NOVEMBER 8

Francine & Mark Adler
Karen & Jonathan Borenstein
Barbara & Joel Waldbott

NOVEMBER 9

Amy & Andrew Farbman
Lisa & Steven Kaplan

NOVEMBER 11

Helaine & Leslie Mandell

NOVEMBER 12

Margie & I. William Oberfelder
Gillian & Jason Tamaroff

NOVEMBER 13

Emily & Paul Burkett
Jaime & Jonathan Zadoff

NOVEMBER 14

Michelle & Randall Blau
Susie & Mark Panza
Lisa & Jared Rothberger
Keri & Ryan Seeney

NOVEMBER 15

Elaine & Milton Conway
Karen & Neil Rockind

NOVEMBER 16

Alla & Boris Khankin

NOVEMBER 17

Marjorie & Nevin Kanner

NOVEMBER 18

Jennifer & Richard Goren
Ilene & Jeffrey Stutman
Wendy & Jason Yourofsky

NOVEMBER 19

Sharon & Jay Adler

NOVEMBER 20

Beth & Adam Lutz

NOVEMBER 21

Carly & Keith Wurn

NOVEMBER 22

Fayclare & Robert Blau
Randi & Robert Levy

NOVEMBER 23

Debbie & Darryl Kaplan

November 24

Jessica & Eric Unatin

NOVEMBER 25

Carol & Jon Birnkrant
Sharon & Dennis Green
Debbie & Robert Simon
Frances & George Stern

NOVEMBER 27

Nanci Lasser-Fearon & Paul Fearon
Sandra & Michael Hermanoff
Alecia & James Rice
Nancy & Sam Shemie

NOVEMBER 28

Jaclyn & Marc Issner
Marcia & Michael Klein
Alina & Yevgeniy Rits

NOVEMBER 29

Sheila & Bruce Wolf

WE NOTE WITH SORROW THE PASSING OF...

BARBARA WEISS GOTTLIEB

Sister of Ronald (Jodi) Weiss. Uncle of Logan (Kevin) Most, Darren Weiss and Todd Weiss. Great-Uncle of Oakley Most and Brighton Most.

BRAND MARWIL

Husband of Susan Marwil. Father of Jeff Jacob Marwil, Bruce Richard Marwil (Heather) and Joanne Lynn Marwil (Andrea Hansen). Grandfather of Sophie Marwil, Jacob Marwil, Harry Marwil, Sloane Marwil, Darby Marwil and Amelia Forton-Marwil. Brother of Deborah Kaufman Marwil (Jerold Bigelman) and Jack Marwil. Brother-in-law of Robert (Ann) Rappaport. Uncle of Carrie Murtha and Jessica Rappaport. Great-Uncle of Zack Murtha and Alyssa Murtha.

GORDON MEISNER

Father of Pamyia (David). VanLoosen, Randee Krolkowski, Jill Samson and Michael Meisner. Father-in-law of Tricia Graves. Grandfather of Sydney, Cara, Danielle, Charlie, Jennifer, Stephanie, Nathaniel, Cassandra and Alexandria.

MORTON H. COLLINS

Partner of Corrine Lemberg. Father of Margo Collins, Andrew Collins, and Daniel (Veronica) Collins. Grandfather of Camryn and Dylan Collins. Also survived by Corrine's children: Lisa Lemberg and Steven (Barbara) Lemberg.

ABRAM EPSTEIN

Husband of Joyce Cantor Epstein. Father of Larry (Mary) Epstein, Bob (Joan Chernoff-Epstein) Epstein, Barbara S. Epstein and Margo and David Kravis. Grandfather of Marisa (David) Ruby, Joshua Epstein, Meredith (Dr. Oren) Tepper, Jonathan (fiancee Abby Friedman) Epstein, Brandon Epstein, Andrew (Jennifer) Kravis and Torrie (Adam) Gleicher. Great-Grandfather of Lennon Avi Ruby, Lev and Stella Tepper, Theo Kravis, and Aden Gleicher.

WALTER LOUIS COHEN

Father of Nicholas (Michelle) Cohen, David Cohen, and Laura Beth Cohen. Grandfather of Lyla and Eliot Cohen. Brother of Shari Cohen.

JUDITH JAY SPARE

Wife of Robert Spare. Mother of David Spare and Steven (Mari) Spare. Four Grandchildren. Sister of Mary (Larry) Epstein and John (Barbara) Jay.

RODNEY M. BROWN

Husband of Vicki Brown. Father of Josh Murray, Bryan Brown, Samantha Murray, Brittany Murray (Fiance Aaron Lawcock), Andrew Brown, and Jason Brown. Son of Helen Brown. Son-in-law of Frances White. Brother of Steven (Julie) Brown and Martin (Mike) Brown. Brother-in-law of Mark (Michelle) Soltz.

GARY GREENBERG

Father of Samuel (Lauren) Greenberg and Andrew (Malika Zouhaili-Worrall) Greenberg. Grandfather of Ben, Nate and Bilal Greenberg. Brother of Julie (Stan Hazan) Greenberg-Hazan and Jill (Robert Kail) Greenberg.

SUNDAY, OCTOBER 28 — SATURDAY, NOVEMBER 3

MOISHIE AIDENBAUM
* STANLEY R. AKERS
HERMAN BAND
* ABRAHAM H. BARON
* JOSEPH H. BEARMAN
SAMUEL BLUESTEIN
HELEN BRESLOW
ANDREW ROSS
CHALAT
ALLEN CHERNEY
MAX CHICOREL
* MINNIE ROBINSON
COHN
DODY COLMAN

DOROTHY BAND
COOPERMAN
* LOUIS M. ELLIMAN
* MARGUERITE JANE
ELSON
* BEATRICE FEIGENBAUM
JEFFREY FORTIER
* RUTH BLOOM FOX
* HATTIE O. FRANKLIN
LAURA FRIEDMAN
* TOBIAS GARON
BYRON "BUD" GERSON
* FRADEL GRANET
MAE GREEN

LORRAINE GREENBERG
* SARAH GREENSPAN
* SADIE DORA GROSBERG
SAMUEL B. GROSS
KASRIEL GULBAS
HERMINE HAMBURGER
FANNIE HARRIS
* SHIRLEY HARRIS
* MOLLIE HAUSER
* JOHN C. HOPP
* JOANNA HORWITZ
* SAMUEL JOSPEY
* GUILA KALLET
ROSE KAPLAN

* DAVID KELTER
* MAY KLEIN
* RUTH ARIE KLEIN
EUGENE KRAFT
EVA LANDSMAN
FRANCES LAZAR
DEBORAH LEVINE
DR. MARSHALL LEVY
DORIS LEWIS
* DONALD A. MAHLER
FREDERICK H. MARX
CORY MAZAROS
JOHN MICHAELSON
* BONNIE MICHELSON

* JIMMY PRENTIS MORRIS
* HARRIET DAVIS NIMAN
* LENA MARX PARSHALL
DANIEL PEVOS
* PHILIP DENNIS RANDS
* ESTHER JACOB
ROBERTS
* SARAH REVA RUBIN
* BARBARA BERENT
RUBINSTEIN
* ROSE SAFFIR
JUDY SCAVONE
* ARNOLD A. SCHAFER
* PAUL M. SHAPIRO

ESTHER SHILLMAN
PAUL SILVERSTEIN
* FLORENCE O. SPERO
NEIL BARRY SPORN
* HANNAH DEBORAH
STEINBERG
* SHIRLEY R. STEINBERG
* WALLY P. STRAUS
* LILLIAN TALAN
* ABRAHAM TOBIAS
* SALLY CASSEL TOBIAS
* LEE WAINSTOCK
LARRY WISHNOW

SUNDAY, NOVEMBER 4 — SATURDAY, NOVEMBER 10

* SALLY ABELMAN
JACK BEHRMANN
HELEN BELL
URSULA MARIA
BIRNHART
SCOTT BROOKS
* HARRY JEROME CARRIS
RICHARD CHAFETZ
* LOUIS S. COHANE
* LEONARD COHEN
* SAM A. COHEN
PAUL COLLINS
* ROSEMARY B. CRANE
LANE DECKER
M. SANNA DEUTCHMAN

FANNIE DORB
RAYMOND DUNN
* BERTHA EISENKRAMER
MELVIN ELLER
CHARLOTTE ENGELSON
* HELEN ESSER FENTON
* ANNA FLIGMAN
* DR. ARTHUR FLIGMAN
* DR. SEYMOUR L.
FLIGMAN
CHARLES FREEDMAN
GERTRUDE FREEMAN
IDA GARRICK
* BEN GLASIER
FLORENCE GORAN

* ARTHUR A. GOTTESMAN
* STUART A. GRAFF
* GRACE G. GRAHAM
* REBECCA GRANT
* RUTH B. GREENSTONE
* MARTIN HACKELMAN
IRWIN HAMBURGER
JACOB HARTMAN
* HAROLD HELPER
* ISADORE HERTZBERG
CAROL HORWITZ
MARVIN KATZ
JULIES KLEIN
IRVING KREINDLER
* ELWOOD KUKES

* HINDA LEWINSON
IDA LOVE
* MAY GOLDMAN
LUMBERG
SOLOMON MARGOLIS
ANNETTE MERDLER
* BERTHA MEYER
DAVID MICHAELSON
* NAT MORRISON
LAWRENCE R. PERNICK
REENA (ReNay) B. ROSE
* BARBARA KOMER
ROSENBLUM
* ROSE ROSENWACH
* JOE ROTH

* REUBEN SANDLER
LOUIS SCHAFER
* ADELE SCHLAFLER
GWENONA SCHWARTZ
* TOLIO SHAEVSKY
* EDMUND MARK SLOMAN
MARJORIE SOMMERFIELD
MINNIE STEIN
STANLEY STEINBORN
HENRIETTA NACHMAN
STEUER
* EDITH STARK SUCHER
* JENNIE LEWIS
SWEETWINE
* BEN THAL

* BELLA TOBIAS
RUBY TOMPKINS
* BERTHA SANDLER
UTNERMAN
MOE WASSERMAN
* REBECCA WEINBAUM
PHYLLIS LORRAINE
WEINER
BELLE WEISBERG
SAM WERNY
* LEON G. WINKELMAN

SUNDAY, NOVEMBER 11 — SATURDAY, NOVEMBER 17

LAYA FAUMAN ALLEN
* BERTHA LEWYN ASCHER
* CLARENCE L. ASCHER
* ABNER BAKER
* HARVEY BERMAN
MAX BERMAN
* DOROTHY BLATNIKOFF
* JUDGE S. JEROME
BRONSON
ELLEN BURNSTEIN
CLIFFORD CRAINE
* YETTA DENENBURG
ROSEMARY T. DESMON

VERA DRESNER
LORNA EICHORN
IDA ELLENSON
ARTHUR FABER
SYLVIA FELDMAN
* NORMAN M. FINK
PHILIP M. FISHER
DR. PIERO P. FOA
* JOSEPH FREED
* TOM PRENTIS FRENKEL
EVELYN FYNKE
LEE J. GARVIN
* EVELYN GOODMAN

MAX GREEN
* JULIUS L. GREENSTONE
JUDITH RHEA GUZ
* JOSEPH I. HARRIS
* THERESA HARRIS
* IRVING J. HAYETT
MARVIN L. HOWARD
RONALD IZBICKI
FRANCES A. KACZANDER
FREDA KAHN
* DAISY KAPLAN
BETTE KARP
* SIMON KLEIN

LENA KOLIN
ELLA LERNER
NATHAN M. LERNER
JACK N. LEVINE
* ALBERT LOPATIN
EVELYN MARKOWITZ
JUNE MARX
MARC MERDLER
SOPHIA MULLER
* BENJAMIN
NATHANSON
LEO POLLACK
CECIL REECE JR.

* BERNICE REINHEIMER
JUDY ROBINSON
* ETHEL ROSEN
* THOMAS I. RUBIN
ANN SEGAL
HAROLD M. SHAPERO
* BENJAMIN SIEGEL
ERWIN SIMON
* LEONARD SIMONS
* DENNIS JAMES
SLATKIN
SAMUEL SMALL
* LESTER S. SMITH

ROSALYN STONE
* RICHARD STRICHARTZ
* C. WILLIAM SUCHER
* ELSIE K. SULZBERGER
* SARAH ELLA
SWEETWINE
* ALVAN F. TRAXLER
SARAH VINACOW
ROBERTO WOLOSCHIN
BERNARD VALKER
TED W. ZIECIK

SUNDAY, NOVEMBER 18 — SATURDAY, NOVEMBER 24

* DR. HARRY ARNKOFF
* WILLIAM BARNETT
* SARAH LIEBERMAN
BENSON
* REBECCA BERMAN
MYER BRESS
HERMAN B. CASS
* HENRY CHATTMAN
ALVIN L. COHEN
MONA COHEN
HOWARD SHELTON
CRAIG
HILLEL CROLL
* HATTYIE O. DAVIS
DR. LEON FILL
NAOMI FOA

MARCIA BELLE
FREEDLAND
* MAURICE GARELIK
WILLIAM GEER
LOTTIE GELLERMAN
BORIS GOLUBOVSKY
HELEN GOODMAN
* RICHARD ARTHUR
GOOEL
* HELEN N. GORDON
JOAN GORDON
REUBEN GRAFF
* DR. SEYMOUR GRANT
* CHARLES G. HALPERT
LYMAN L. HARRIS
DR. MANES S. HECHT

DAVID HERMELIN
NELSON HERTZBERG
DOROTHY HOCHMAN
SELMA SLOTHIN
HYMAN
DR. SAMSON INWALD
* MARY R. JACKSON
* LOUIS KIMMEL
RHEA KLEIN
RICHARD KLINE
LEON KOHLBERG
DR. EDWARD KOZLOW
ANNETTE LASH
* SAMUEL P. LEAVITT
EUDICE LEOPOLD
MURRAY J. LEVIN

CHARLOTTE LEVINE
ROBERT LINKNER
* NATHAN W. LURIE
* BARBARA MANKO
MORRIS E. MARGULIES
PAUL MONCHNIK
* HATTIE M. MORRIS
VERA MULLER
* ROY F. NATHAN
ERNEST NEUVIRTH
* SIDNEY J. NEWMAN
* DR. DAVID JEREMY
PATT
* FLORENCE REINHEIMER
PHYLLIS RUTH REMER
DAVID ROSENBLATT

* HARRY ROSENFELD
DAVID RUBIN
* SAMUEL SARASOHN
* DAVID SEGAL
ANNE SEGEL
JACOB SHAPIRO
* RITA G. SHERLINE
* ERNEST SIEGEL
SELMA SIMON
* RICHARD SMITT
SOPHIE SONN
* FREDA STEINBERG
* JULIUS STEINBERG
EVERET STRAUS
KAREN TAKACS
MILDRED TELL

* ANN E. WAGNER
JOSEPHINE
WASSERMAN
ROSLYN WEINGER
LILLIAN WELFORD
* GEORGE WILLENS
BONNIE WINE
* MARTHA
WOHLGEMUTH
MEYER WOLNOWICZ
* BARBARA YAKER

SUNDAY, NOVEMBER 25 — SATURDAY, DECEMBER 1

* PHYLLIS Z. ALLEN
* MEYER ANTICK
MARY AXELROD
* RACHEL BARNETT
ILENE BATCKHO
BERNARD BENKOFF
HAROLD BIENEFELD
JACOB MONT BLAU
* MAX BRODER
GERALDINE "GERI"
CHERNEY
* JOEL-JOSHUA COHEN
* MOSES COHEN

* DAVID COHN
* DONALD MILES
CUTLER
BERNICE DAVIS
RONALD DECKER
SHIRLEY DIEM
ALBERT EICHORN
ROSALIE ELIASOHN
* GRACE E. EVANS
BEATRICE FABER
* MINNIE FISHER
* GRETLL FRANK

STANLEY RICHARD
GARD
JAMES GINN
* SAMUEL H.
GREENWOOD
* RUSSELL C. HARRIS
* ERNESTINE F.
HORWITZ
WILLIAM HURWITZ
* JOHN IMERMAN
SHELEL SYBIL JOSEFF
BEULAH KAMINS
* ARCHIE KATCHER

BETTY KLEIN
MIGNON KRAFT
* SIDNEY KRANDALL
* NAOMI STONE LEVY
* IRMA LICHTERMAN
SYLVIA LISAK
* JODI LYNN LUTZ
* DR. MAURICE P.
MEYERS
PEARL NOSANCHUK
BERTHA OSLANDER
* CORRINE G. POLLAK
LOTTIE POSEN

* HERMAN E. RAFELSON
* FLORENCE REICH
DOUGLAS RESNICK
YOSEL RITS
* ROSE ROSENFELD
* MORRIS ROTH
* EDWARD W. RUBIN
ELEANOR RUBIN
* MARCIA G. SAFFIR
ABRAHAM G. SCHOCK
* FLORA SCHREIBER
ABE SCHWARTZ
HELEN SCHWARTZ

PAULINE SHAFFER
LOUIS SHERMAN
RICHARD SHIELDS
SARRA SHILEYPAK
* EMANUEL SILBERBERG
MARTIN SPERLING
* BELLE STEINBERG
* ANN K. STRAUSS
* BENJAMIN SUCHER
* GRACE COHEN
WARREN
BARBARA ZONDER

NOVEMBER 2018

01 THU

10:00 AM

Bites & Books

7:00 PM

The Empowerment of Women: Sisterhood Membership Event

7:00 PM

Bites & Books

02 FRI

7:00 PM

Music Shabbat featuring Saul Kaye & Elana Jagoda

03 SAT

9:00 AM

Bible Study

9:15 AM

TBE Torah Study

9:30 AM

Tot Shabbat: Let's Rock!

10:30 AM

Shabbat Service

Bat Mitzvah of Ella Shane

12:30 PM

Nosh & Knowledge with Saul Kaye

7:00 PM

Evening of Blues

04 SUN

8:30 AM

B'nai Mitzvah Club

9:00 AM

Sunday Morning Breakfast

9:30 AM

MASA

9:30 AM

Sunday Minyan

10:00 AM

Sisterhood Board Meeting

11:15 AM

Masa Concert with Saul Kaye & Elana Jagoda

05 MON

6:00 PM

Masa Teens

07 WED

9:30 AM

Torah Study – Lea Beurer

10:30 AM

Hebrew – Lea Beurer

4:30 PM

B'nai Mitzvah Club

7:00 PM

Adult B'nai Mitzvah

09 FRI

LAWSON TRIP

7:00 PM

Shabbat Service

10 SAT

LAWSON TRIP

9:00 AM

Bible Study

9:15 AM

TBE Torah Study

10:30 AM

Library Shabbat with TBE Choir

11 SUN

LAWSON TRIP

VETERANS DAY

8:30 AM

B'nai Mitzvah Club

9:00 AM

Sunday Morning Breakfast

9:30 AM

MASA

9:30 AM

Sunday Minyan

9:30 AM

Brotherhood Speaker

10:00 AM

Bubbie/Zaydie Temple Tots

11:30 AM

Youth Choir Rehearsal

12 MON

6:00 PM

Masa Teens

13 TUE

7:00 PM

TBE Choir Rehearsal

14 WED

9:30 AM

Torah Study – Lea Beurer

10:30 AM

Hebrew – Lea Beurer

11:30 AM

National Epidemic of Youth Suicide Luncheon

4:30 PM

B'nai Mitzvah Club

7:00 PM

JNF Dessert Reception featuring Ethan Zohn

7:00 PM

Adult B'nai Mitzvah

15 THU

6:30 PM

Bead and Feed

7:00 PM

Israeli Designer Event

16 FRI

7:00 PM

Bring in the Light Shabbat + Quinquennial Anniversaries

17 SAT

9:00 AM

Bible Study

9:15 AM

TBE Torah Study

10:30 AM

Shabbat Service

Bat Mitzvah of Talia Sachs

7:00 PM

Sisterhood Casino Night

18 SUN

8:30 AM

B'nai Mitzvah Club

9:00 AM

Sunday Morning Breakfast

9:30 AM

MASA

9:30 AM

Sunday Minyan

10:30 AM

Masoret

12:00 PM

K-5 Mitzvah Day

19 MON

6:00 PM

Masa Teens

20 TUE

6:00 PM

Interfaith Thanksgiving Service

21 WED

9:30 AM

Torah Study – Lea Beurer

10:30 AM

Hebrew – Lea Beurer

22 THU

THANKSGIVING

OFFICES CLOSED

23 FRI

OFFICES CLOSED

7:00 PM

Shabbat Service

24 SAT

9:00 AM

Bible Study

9:15 AM

TBE Torah Study

10:30 AM

Shabbat Service

5:00 PM

Havdalah Service

Bar Mitzvah of Max Beckett

25 SUN

9:30 AM

Sunday Minyan

26 MON

6:00 PM

Masa Teens

27 TUE

7:00 PM

TBE Choir Rehearsal

28 WED

9:30 AM

Torah Study – Lea Beurer

10:30 AM

Hebrew – Lea Beurer

4:30 PM

B'nai Mitzvah Club

5:00 PM

Knitting, Crafts and Laughs

7:00 PM

Adult B'nai Mitzvah

29 THU

1:00 PM

Movies & Munchies

30 FRI

7:00 PM

Shabbat Service

NOVEMBER

S

M

T

W

T

F

S

4

5

6

7

8

9

10

11

12

13

14

15

16

17

18

19

20

21

22

23

24

25

26

27

28

29

30

SOULFUL MUSIC. THOUGHTFUL PRAYER. CHALLENGING IDEAS.



SATURDAY, NOVEMBER 3 BAT MITZVAH OF ELLA SOPHIA SHANE

Ella is a 7th grader at Berkshire Middle School. Ella loves to snow ski, water ski, travel and spend her summers at Camp Tanuga. For her Mitzvah Project, Ella helped by volunteering with *Rewearable*, a non profit that provides prom dresses and accessories to girls that can't afford them. Ella helped throughout the season by keeping inventory of all the merchandise that was donated. Ella also worked at the event "Say Yes to the Prom Dress", where she assisted in pulling together prom looks for high school kids for prom. Ella is the daughter of Jennifer and Matt Shane, the sister of Tessa, and the granddaughter of Janice and Stuart Kirschenbaum, Carole and Gary Lazar and Paul Shane.



SATURDAY, NOVEMBER 17 BAT MITZVAH OF TALIA BROOKE SACHS

Talia is a 7th grader at Derby Middle School where she runs on the cross-country and track teams. Talia loves playing travel soccer for United FC, spending her summers at Tamarack Camp, and reading. For her Mitzvah projects, Talia is organizing a book drive for *Rx for Reading* and donating money to *Send a Kid to Tamarack*. Talia is the daughter of Jessica and Ken Sachs, the sister of Evan, and the granddaughter of Kathy Green and Zita and Ludwig Gottesman.



SATURDAY, NOVEMBER 24 BAR MITZVAH OF MAX HUNTER BECKETT

Max will lead our congregation in prayer in a Havdalah service, as he is called to the *bimah* as a bar mitzvah on November 24, 2018. He is in 7th grade at Derby Middle School in Birmingham, and enjoys soccer, bike riding, video games and summer at Camp Walden. He has participated in Friendship Circle's Walk for Friendship for the past two years and enjoys helping special needs children. Max will be joined in celebration with his parents, Sheri Marcus and Bob Beckett, sister, Emy Beckett, half-siblings, Brittney and Bradley Beckett, and proud grandmother, Linda Marcus. Max is also the grandson of the late Dr. Henry Marcus.

PINK SHABBAT OCTOBER 5

On Friday, October 5, TBE hosted a PINK Shabbat where we honored survivors of breast cancer, heard moving story from Miriam Cohen, and shared information from Sharsheret. The foyer was filled with educational materials, pink ribbons, balloons, napkins, candy and even a PINK Challah! Thank you to all that came out and made the evening so special!

FRIDAY, NOVEMBER 2

7:00 PM Music Shabbat featuring Saul Kaye & Elana Jagoda
Donuts & Cider *Oneg*
sponsored by Carolyn & Charles Greenberg

SATURDAY, NOVEMBER 3

9:00 AM Bible Study
9:15 AM TBE Torah Study
9:30 AM Tot Shabbat: Let's Rock!
10:30 AM Shabbat Service
Bat Mitzvah of Ella Shane
12:30 PM Nosh & Knowledge with Saul Kaye
7:00 PM Evening of Blues

FRIDAY, NOVEMBER 9

7:00 PM Shabbat Service

SATURDAY, NOVEMBER 10

9:00 AM Bible Study
9:15 AM TBE Torah Study
10:30 AM Library Shabbat with TBE Choir
Torah Reader: Sara Tatchio

FRIDAY, NOVEMBER 16

7:00 PM Bring in the Light Shabbat +
Quinquennial Anniversaries

SATURDAY, NOVEMBER 17

9:00 AM Bible Study
9:15 AM TBE Torah Study
10:30 AM Shabbat Service
Bat Mitzvah of Talia Sachs

FRIDAY, NOVEMBER 23

7:00 PM Shabbat Service

SATURDAY, NOVEMBER 24

9:00 AM Bible Study
9:15 AM TBE Torah Study
10:30 AM Shabbat Service
Torah Reader: Alan Lowen
5:00 PM Havdalah Service
Bar Mitzvah of Max Beckett

FRIDAY, NOVEMBER 30

7:00 PM Shabbat Service



CLERGY

Mark Miller, Senior Rabbi
Rachel Gottlieb Kalmowitz, Cantor
Megan Brudney, Assistant Rabbi
Daniel B. Syme, Rabbi Emeritus

STAFF

Daniel Mesa, Executive Director
Deborah Morosohk, RJE, Director of Education
Claire Danaher, Chief Financial Officer
Susie Weiner, Director of Early Childhood Center
Danielle Gordon, Program Director
Lindsey Fox-Wagner, Communications Director
Rachel Rudman, Director of Member Engagement
Scott Lowen, Director of Youth Engagement
Laura Williams, Curator
Alan Lowen, B'nai Mitzvah Coordinator
Jim Gabriel, Accompanist
Allan N. Friant, Sr., Building Superintendent
Joe Winter, Cemetery Superintendent
Morris Collins, Reception/Security
Thomas Jablonski, Executive Director Emeritus

EXECUTIVE COMMITTEE

Liz Modell, President
Lorie Kessler, Vice President
Maxine Lievois, Vice President
Warren Rose, Vice President
Alex Stotland, Vice President
Adam M. Lutz, Treasurer
Rochelle Nelson, Secretary
Jordan Wertheimer, Immediate Past President
E. Todd Sable, Member-at-Large

AFFILIATES

Elaine Brockman, Beth Elders
Bruce Plisner, Brotherhood
Cindy Bolokofsky and Karen Lowen, Sisterhood
Alecia Rice, The Kid-ish Club
Ari Richardson, Beth El Temple Youth (BETY)
Natalie Shirley, K-5 K'hilah Club



TEMPLE
BETH EL

7400 TELEGRAPH ROAD
BLOOMFIELD HILLS, MI 48301
WWW.TBEONLINE.ORG

Non-Profit Org.
U.S. Postage
PAID
Southfield, MI
Permit No. 498



Hosted by the Beth Elders

Temple Beth El invites you
to join us for a

LATKE LUNCHEON

**THURSDAY, DECEMBER 6
11:30 AM**

*Celebrate Hanukkah with a
latke lunch and internationally
renowned singer and pianist
Amy Schreiber!*

\$10/PERSON

RSVP by Friday, November 30 to Danielle
dgordon@tbeonline.org or 248.851.1100.

