

MAY 2015 IYAR 5775
VOL. 28 ISSUE 10

TEMPLE BETH EL

the Bulletin

*Join us for a lively and
interactive service, featuring
our Music Shabbat Band.*

**FRIDAY
JUNE 5**

OUTSIDE IN THE COURTYARD

**SUMMER
KICK-OFF**

**SHABBAT
SERVICE
and
BBQ**

Details... **pg 3**

PLUS summer fun
& events preview!

The Joys of Shabbat



MUSIC SHABBAT INCLUDING A BRIEF GRADUATION CEREMONY

A high-energy, spiritual, thought-provoking service. Families and all ages will walk away uplifted, recharged, and connected. Join us as we celebrate this year's Religious School graduates.

**FRIDAY, MAY 1
7:30 PM**

Stay for a special Oneg honoring Arlene Keller on her retirement.



Camp Beth El Small Fri Shabbat

Especially for families with children ages 0-6+.

FRIDAY, MAY 29

Service: 5:30 pm
Dinner: 6:00 pm
(\$36 per family)

We'll have a singing family service followed by a kid-friendly dinner by Cutting Edge Cuisine (with wine for the adults).



OPEN TO THE COMMUNITY

RSVP to Julie Rolnick at jrolnick@tbeonline.org or 248.851.1100 ext 3143.

Join Us For Tot Shabbat



A fun, musical Saturday morning experience for families with children, ages 0-6+.

Saturday, May 9
9:30 am Service in the Chapel, Oneg & activity following.

Family Kabbalat Shabbat



Friday, May 8 6:00 pm

Celebrate Shabbat with a delicious traditional family-style Shabbat dinner by Cutting Edge Cuisine.

Especially for families with elementary-aged children, siblings welcome!

Shabbat music and fun activities for the entire family!
\$5 per person

RSVP to Julie Rolnick at jrolnick@tbeonline.org or 248.851.1100 ext. 3143.

6:00 PM BBQ
7:30 PM Music Shabbat

FRIDAY, JUNE 5

6PM BBQ With All the Fixin's

\$10 adults \$5 kids

Patio Outside the Sanctuary

LAWN GAMES FOR ALL AGES.

Frisbee, bean bags, disc golf and an **ICE CREAM TRUCK!**

7:30 Music Shabbat

Helen Vera Prentis Lande Courtyard

Join us for a lively and interactive service, featuring our Music Shabbat Band.

**SUMMER
KICK-OFF
SHABBAT
SERVICE**
and
BBQ

**BRING YOUR FRIENDS
OPEN TO THE COMMUNITY**

Summer events preview!

Havdallah In The Park

**Havdallah in Shain Park
Birmingham**

SATURDAY EVENINGS
June 20, July 11 and August 15.

6 pm Park Activities
7 pm Havdallah Service

Bring the whole family!

JEWniors



★ **MOVIE NIGHT** ★

Movie night for JEWniors & younger at TBE.
6 - 8 pm - May 28, June 25, July 23 and August 27.
Fourth Thursday of each month.

Join TBE as we take a family trip to Cedar Point, the "Roller Coaster Capital of the World!"



June 14, 2015

Bus will leave Temple at 7:30 am SHARP.

All participants should arrive no later than 7:15 am.

We will return to Temple around 8:30 pm.

Enjoy the day with your family riding roller coasters, splashing in the water park, seeing live shows, playing arcade games and so much more.

Check out www.cedarpoint.com for more information on the park.

Cost: \$35 for children entering 6th grade and under;
\$40 for adults and children entering 7th grade and over.

Price includes coach bus transportation, snacks on the road and admission to Cedar Point.

Families will be responsible for bringing or purchasing their lunch.

Space is limited and advance **RESERVATIONS** are **REQUIRED**.

RSVP to Julie Rolnick at jrolnick@tbeonline.org or 248-851-1100 ext. 3143.

For more information contact Rachel Rudman at rrudman@tbeonline.org or 248-851-1100 ext. 3169.



Walk Together With Our Beth El Group As We Celebrate ISRAEL!

The Annual Walk for Israel + Run For Israel 5K and Family Fun Run!

A COMMUNITY WIDE EVENT

SUNDAY MAY 17

Hosted by Temple Shir Shalom,
3999 Walnut Lake Road

5K Run 8 am Programs 11 am

Free Kosher Lunch 12:30 pm

Walk 1:30 pm

To join the "TBE Walking Team" contact Laura in the Rabbis' Study, llucassian@tbeonline.org or 248-851-1100, ext.3142.



To register or learn more visit www.WalkForIsrael.org

FREE

TEMPLE BETH EL

MOTOWN

COMMUNITY CONCERT

Sunday, July 19th

3:00 pm

Featuring the

Contours

and the

Vandellas

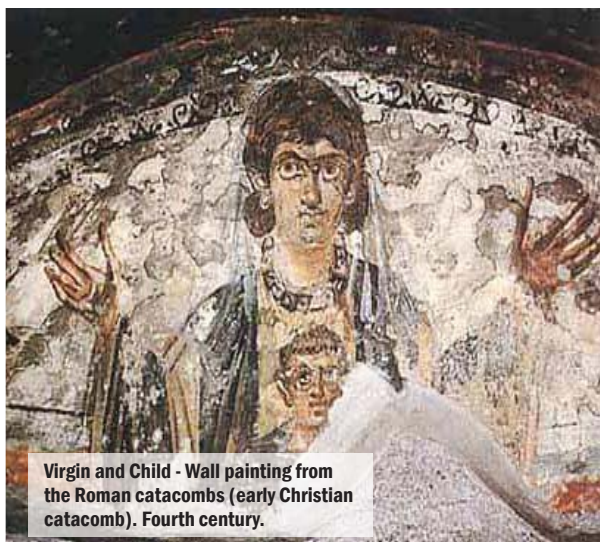


Shavuot

Sunday, May 24, 2015
10:30 am Yizkor Service

Shavuot is the Hebrew word for “weeks” and refers to the Jewish festival marking the giving of the Torah at Mount Sinai, which occurs seven weeks after Passover. Shavuot, like many other Jewish holidays, began as an ancient agricultural festival that marked the end of the spring barley harvest and the beginning of the summer wheat harvest. In ancient times, Shavuot was a pilgrimage festival during which Israelites brought crop offerings to the Temple in Jerusalem. Today, it is a celebration of Torah, education, and actively choosing to participate in Jewish life.

The Origins of Christianity: AN INTRODUCTION



Virgin and Child - Wall painting from the Roman catacombs (early Christian catacomb). Fourth century.

Join us after services for a special learning opportunity with Jana Von Gott and Rabbi Daniel Syme.

Saturday, May 2 12:30 pm

Jana Von Gott has been studying Scripture, Hebrew and Christianity for almost 25 years, comparing them doctrinally and historically. She graduated from the University of Michigan with degrees in both English and Political Science, and a minor in Economics. She has seven children and one grandchild.

For more information or to RSVP, please contact Julie Rolnick at 248.851.1100 ext. 3143 or jrolnick@tbeonline.org.

Honoring Arlene Keller on Her Retirement

Join us for Music Shabbat, Friday, May 1 at 7:30 pm, as we honor Religious School Principal Arlene Keller and wish her well in her retirement from Temple Beth El.



For decades Arlene has been an integral member of the TBE Family. Arlene's passion for teaching and for learning has served her well in her roles as Principal, B'nai Mitzvah Club tutor and teacher to many 4th and 11th graders. Arlene is devoted not only to her students but to Temple families, teachers and staff as well.

Arlene and her husband Paul are the proud parents of Melissa and Sarri. Both of their daughters were TBE Madhchat and celebrated their B'not Mitzvah, confirmations and graduations from TBE Religious School. Sarri is a speech pathologist living in Chicago and Melissa, her husband Jeremy and their two children also call Chicago home. When not traveling back and forth to the Windy City to see her children and grandchildren, Arlene enjoys working on creative projects, knitting and sewing.

The Love Of Music!

Congratulations

Jim Gabriel
Piano
SOJOURN



**Temple Beth El
is extremely proud
of our accompanist,
and Vocal Music Director
at Cranbrook, Jim Gabriel!**

Jim released a CD of original music recently, and has been nominated for a major national award for the Best New Artist from the Zone Music Reporter, which specializes in New Age, World, and Electronic music.

His album, **Sojourn**, was released last year. Award winners will be announced in New Orleans at the 11th Annual ZMR LIVE Music Award Show on Saturday, May 9th, 2015.

**Next time you see Jim in services,
please congratulate him -
and be sure to purchase his
CD by going to
www.cdbaby.com/cd/jimgabriel**

TICKETS ON SALE NOW

22ND ANNUAL JUNE 13-28 PAUL WATKINS, ARTISTIC DIRECTOR
**GREAT LAKES CHAMBER
MUSIC FESTIVAL**
NEW BEGINNINGS: MAKING MUSIC IN AMERICA
IN VENUES THROUGHOUT DETROIT



22ND ANNUAL GREAT LAKES CHAMBER MUSIC FESTIVAL NEW BEGINNINGS: MAKING MUSIC IN AMERICA

Artistic Director, Paul Watkins

JUNE 13-28, 2015

IN VENUES THROUGHOUT DETROIT, INCLUDING TEMPLE BETH EL

*The Festival's vocalist is Temple Beth El's own
Cantorial Soloist, Rachel Gottlieb Kalmowitz.*

America is a land of new beginnings. The hope inspired by its sights, sounds and people is at the heart of some of the greatest artistic achievements in classical music. This year's Festival will mark its own new beginning with first-year Artistic Director Paul Watkins. The Welsh-born musician and conductor will lead a musical journey encompassing an eclectic blend of America's classical and contemporary contributions to the genre, including a number of exciting world premieres. This season will bring many new faces, places and experiences to the Festival, but you can expect the same great music, great artists and great friends you have come to know and love.

Joining the Festival this year are a cast of famed chamber musicians, including: pianists Alesion Bax, Ran Dank, Anton Nel and James Tocco; violinists Eugene Drucker, Stephanie Gonley, Jaime Laredo, Philip Setzer and Yoonshin Song; Lawrence Dutton on viola; cellists Robert Demaine, Sharon Robinson and Paul Watkins; Kevin Brown on bass and David Buck on flute. Ensembles include the Detroit Chamber Winds and Strings, Eighth Blackbird and Emerson String Quartet. Shouse Ensembles include Altius Quartet, Calidore String Quartet, Donald Sinta Quartet, Excelsa Quartet and Sotto Amore Duo; composers include Mark Grey and Sleeping Giant. The Festival's vocalist is **Temple Beth El's own Cantorial Soloist, Rachel Gottlieb Kalmowitz.**



Subscription and individual tickets are now on sale.

Call 248-559-2097 or visit
www.greatlakeschambermusic.org.

Mitzvah Meals

We meet the needs of the less fortunate in our community.



THIS MONTH'S PICK UP DATE IS TUESDAY, MAY 26

What better way to show your support to those in need, than with a contribution to Mitzvah Meals? Your gift to Mitzvah Meals will ensure that those in need in our Jewish community will not go hungry. To date, thanks to your contributions and our partnership with **Jim Hiller of Hiller's Markets**, we have provided over 110,000 meals!

This month, we would like to issue a most special thank you to **Beverly and Bob Canvasser** for their generosity and help with the Mitzvah Meals program throughout the years.

As always, our thanks to our **Mitzvah Meals volunteers**. Our March crew, headed by chair, Deloris Weinstein, included Lorraine Alkon, Sheldon Alkon, Betty Baron, Eleanor Barron, Irv Baron, Maxine Ben Yuri, Bob Dickstein, Ann Flood, Galina Gorelick, Adele Goldstein, Helen Klau, Estelle Kleiman, Dolly Lax, Gail Lorber, Irv Lorber, Karen Lowen, Rita Packard, Carol Schock and Florence Schuman.

Our thanks as well to our **"volunteer caterers"** who fed the volunteer crew - Adele Goldstein, Karen Lowen and Rita Packard. A special thank you to Damon Kaigler and Dyon Williams of our **maintenance staff** for assisting with Mitzvah Meals this month and to Aaron Lowen from **Cutting Edge Cuisine**, for the use of their truck. Our thanks as well to the TBE staff members who volunteer monthly and **Hiller's Markets** for their ongoing generosity.

Deloris and the Mitzvah Meals volunteers would also like to welcome aboard Kim Raznik, and thank her for spending her quality time with us.

Honor or remember family and friends and help sustain the work of Mitzvah Meals with your \$36 donation to the program. Make your checks payable and mail to Temple Beth El, 7400 Telegraph Road, Bloomfield Hills, MI 48301, attn. Mitzvah Meals.

USHERS WANTED

Temple Beth El is looking for additional ushers for Shabbat and holiday services. For more information, please contact Dolly Lax at 248-476-9869.



We Are Proud

Laura Williams, graduate from TBE and recipient of the Roslyn Schubot Memorial Award to continue her Jewish studies is doing just that. Laura graduated from Michigan State and received the College of Social Science Dean's Assistantship Award to do research. Laura plans to finish her research and presentation on "Anti-Zionism to Zionism: Reform Judaism and Temple Beth El of Detroit's Alternate Course" this summer.

Noah Ostheimer has been named as a Diversity Champion with the Rack Relations & Diversity Task Force. Noah has been notably active in support of diversity and the ideals of inclusion with Temple Beth El. Noah and other Diversity Champions will be honored at a community wide breakfast on Thursday, May 7th at 8:00 am at The Community House in Birmingham.

Congratulations on the Engagement of **Emily Beth Korotkin**, daughter of Kenneth Korotkin and Julie Dale; Granddaughter of Florine Korotkin, to Stacy Lynn Meitzner, daughter of Carol and Larry Skalsky and Diane Meitzner and the late David Meitzner; Granddaughter of Shirley Williamson. A June wedding at the Fillmore is planned.



SUPPORT TEMPLE BETH EL WITH EVERY PURCHASE YOU MAKE FROM AMAZON!

*AmazonSmile is the same Amazon you know.
Same products, same prices, same service.*

Log in to your Amazon account at the right with your regular user name and password. Choose Temple Beth El in Bloomfield Hills as your charitable organization of choice.

Browse and purchase your items, and Temple Beth El's Library will receive 0.5% of your eligible AmazonSmile purchase.

A vibrant pink rectangular poster for a Mother's Day Sale. At the top, a stylized illustration of a woman in a pink dress and green skirt walks while carrying a green shopping bag. The word "Sale!" is written in large, white, cursive font. Below it, in bold white capital letters, is "ONE DAY ONLY!". This is followed by "20% off" in very large white font. Then, "Mother's Day Sale" is written in a white cursive font, and "SUNDAY, MAY 3RD" is in bold white capital letters. At the bottom left, it says "20% off applies to all items in the Sisterhood Gift Shop." in white. To the right of this text is an illustration of several wrapped gifts in various colors.

Sale!
ONE DAY ONLY!
20% off
Mother's Day Sale
SUNDAY, MAY 3RD
20% off applies to all items in the Sisterhood Gift Shop.

Brotherhood Installation Dinner and Shabbat

FRIDAY, MAY 29, 2015

6:00 pm - Wine and Cheese

6:30 pm - Dinner Served


**7:30 pm - Installation of Officers
during Shabbat Services**

\$20 for Brotherhood members

\$40 for Non-Brotherhood members

We hope many of our Brotherhood
members will celebrate with us.

RSVP by May 14 to Jeffrey Hollander,
248.821.0580 or nmp@comcast.net.

A rectangular invitation card with a colorful, abstract border. The card has a white background with a green border. At the top, it says "The Sisterhood of Temple Beth El Cordially invites you to our" in a small, black, sans-serif font. Below this, "Progressive Dinner" is written in a large, elegant, purple cursive font. Then, "SATURDAY EVENING" is in bold black capital letters, followed by "MAY 16" in a large, bold, black font, and "6:00 PM" in a smaller, bold, black font. Below this, it says "Join us for a fun evening of Wine • Appetizers • Dinner • Dessert" in a black, sans-serif font. Then, "All adults welcome" and "\$25 per person" are in a smaller, black, sans-serif font. Below this, "Space Limited • First Come/First Served" is in a smaller, black, sans-serif font. At the bottom, "Questions: Judy Pazol" and "248-505-1416 • jppazol@aol.com" are in a smaller, black, sans-serif font.

The Sisterhood of Temple Beth El
Cordially invites you to our
Progressive Dinner
SATURDAY EVENING
MAY 16
6:00 PM
Join us for a fun evening of
Wine • Appetizers • Dinner • Dessert
All adults welcome
\$25 per person
Space Limited • First Come/First Served
Questions: Judy Pazol
248-505-1416 • jppazol@aol.com

Total Attending _____ X \$25 = _____

Name(s) _____

Address _____

Phone _____ Email _____

My check is enclosed for the amount \$ _____

-Or- charge my credit card

Number _____

Exp. Date _____ Security Code _____

Name on Card _____

Temple Beth El 7400 Telegraph Rd. Bloomfield Hills, MI 48301
Attn: Sisterhood Progressive Dinner

Temple Beth El...Our Spirit is Growing



SISTERHOOD DONOR LUNCHEON



GOOD SHABBOS DETROIT



ZIMRIYAH



RELIGIOUS SCHOOL JEWISH HISTORY OF DETROIT TOUR



JEWniors at AIRTIME



TBE FAMILY SEDER



MUSIC SHABBAT



SENIOR SEMINAR AT RABBI MILLER'S HOUSE

Early Childhood Center

SPRING HAS SPRUNG!

We hope everyone enjoyed our Family Passover event in April. The children worked so hard to make their program one to remember. We were delighted to have so many parents, family members and friends helping our children by sharing some of their favorite songs and creating special crafts to help make their Seder table special and unique.

Camp season is fast approaching and fall registration is in progress. If you or someone you know are interested in our programs, please have them contact the ECC office at 248-865-0611 for additional information.

Dates to Remember!

FRIDAY, MAY 29	Last day of ECC enrichments programs
THURSDAY, JUNE 4	Last day of the school year
FRIDAY, JUNE 5	End of the year celebration



ECC Fall Registration

Our high quality early childhood center provides a play-based setting, which helps our children thrive and have fun as they learn. Staff is devoted to providing our children and their families a safe, nurturing, relaxed, warm and loving place where children grow and thrive.

For more information or to tour TBE's Early Childhood Center, contact the Jen Goren at jgoren@tbeonline.org or 248-865-0611.

**LAUGH
LEARN
& GROW
TOGETHER**

Sensational Camp Beth El!



**Put TBE Summer
Camp in Your
Family Plans
Today!**

JUNE 15 - AUGUST 7
Camp Beth El

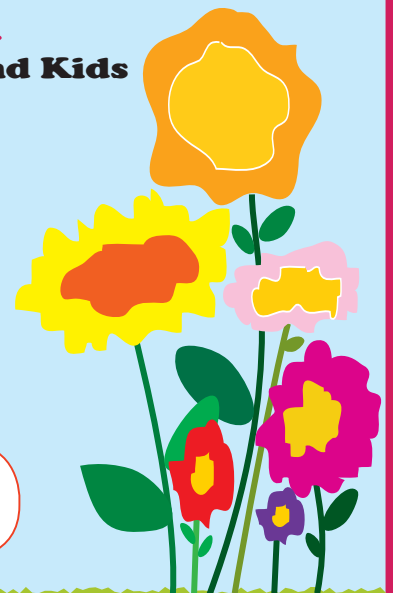
For Children Ages 2-5 Years
Experienced Staff

AUGUST 10 - 14
Safety Town

For Kindergarten Bound Kids

- **Flexible schedule**
- **Water fun, special guests, gardening, arts & crafts**
- **Weekly themes**
- **Choose from 2, 3, 4 or 5 half or full day programs**

**CONTACT: Jen Goren, ECC School Assistant at
248.865.0611 or jgoren@tbeonline.org**



Religious School Calendar

New Group! - Grades 1-5
JEWniors

Grades 6-8
JYPS

Grades 9-12
YPS



GRADUATION

Friday, May 1 / 7:30 pm

Come to Music Shabbat services and celebrate with our Graduates. The graduation ceremony will be part of our service that evening.



B'NAI MITZVAH CLUB KICK-OFF EVENT

Sunday, May 3rd / Noon - 1:00 pm

Our 4th Grade families are invited to join us for a brief lunch and ceremony at which they will be presented with a prayer book in preparation for the beginning of B'nai Mitzvah Club next fall.



RELIGIOUS SCHOOL 2015-16 PARENT MEETING

Sunday, May 3 / 9:45 - 10:30 am

All Religious School parents (Grades PK-12) are invited for an informational meeting with our Director of Education, Debbie Morosohk. Debbie will present the outline for what our programs will look like next fall and beyond.



TOT SHABBAT

Saturday, May 9 / 9:30 am



MATTAN TORAH

Saturday, May 9 / 10:30 am - 2 pm

Our 5th grade families are invited to join us to celebrate Shabbat with services, lunch and a special ceremony at which the students will receive the Torah portions for their B'nai Mitzvah ceremonies.



CONFIRMATION

Friday, May 22 / 7:30 pm

Come to Shabbat services and celebrate with our Confirmation class. The ceremony will be part of our service that evening.

SPEND THE NIGHT HANGING OUT WITH YOUR FRIENDS AT
OPEN TO 7-12TH GRADERS
FUNI FUNI FUNI
TEMPLE BETH ELI
YPS LOCK-IN FUN
MAY 2: 6PM
MAY 3: 9AM
CHINESE FOOD, GAGA PIT, CAPTURE THE FLAG, SUNDAE BAR, MOVIES AND GAMES IN BENTON'S PLACE.
RSVP to Julie at jrolnick@tbeonline.org or 248.851.1100 ext. 3143.

TBE members \$10 (non-members \$15)
Includes dinner, breakfast, snacks and activities.



Movie night for JEWniors & younger at TBE.

MAY 28, JUNE 25, JULY 23
AND AUGUST 27.

6 - 8 PM
Fourth Thursday of
each month.

QUESTIONS CONTACT: Rachel Rudman at
rrudman@tbeonline.org or 248.851.1100 ext 3169.



CONGRATS TO OUR 2015-2016 YPS BOARD

Hannah Myers and Rachel Frenkel, Co-Presidents
Alayna Hackman, Communications Vice President
Zachary Gutman, Programming Vice President
Lily Mendelson, Membership Vice President

Preserving History and Providing Resources With Respect and Dignity

by Jan Durecki, Archivist

The Jewish War Veterans, Department of Michigan Archives has recently received a donation from Russi Cherry Arden that relate to her late husband, Captain Allan Sheldon Cherry.* Capt. Cherry was born in Union City Missouri in 1936. During the ensuing years, his family moved to the metropolitan Detroit area. Allan graduated from Central High School and studied at Wayne State University. He met his future wife Russi while she was a student at Mumford High School. Allan and Russi were married in 1959, two years after he had enlisted in the United States Air Force. Russi reminisced that “flying was in his blood.” She kissed him goodbye in July of 1967 as he departed for Southeast Asia. Sadly, his plane was shot down during an armed reconnaissance mission over North Vietnam five weeks later. According to the Casualty Data Report “Captain Cherry started a strafing run from 13,000 feet on a suspected truck park. [When] it became apparent that Capt. Cherry could not pull out of his dive his wingman called for [him] to bail out. The wingman received no response from Capt. Cherry and ...observed[d] the aircraft until it impacted the ground...the wingman reported seeing no parachutes [and] could not make contact with the downed airman. Due to the hostile threat in the area, no formal search and rescue mission was launched.” Captain Cherry’s presumptive status was killed in action (KIA) body not recovered. In 1997 his remains were located, but they were not positively identified until 1999.

In January of this year, Russi donated the US Government’s official report outlining the forensic tests, photographs and evidence used to determine that the recovered remains were those of Captain Cherry. She also donated a MIA POW bracelet that was given to her in 2009. Kaye Medina had picked up the memento in 1993 at an air show in Illinois. Kaye spent many years trying to locate Captain Cherry’s family. Coincidentally, a Florida newspaper had printed an article about Russi’s attempt to return an MIA bracelet that she owned to the family of Colonel Sheldon John Burnett. Kaye spotted the article online, reached out to Russi and returned Captain Cherry’s bracelet to her. On behalf of the Jewish War Veterans – Department of Michigan, I thank Russi for entrusting the government’s report and MIA bracelet to the Archives for safe keeping. When we met, it was clearly evident that these artifacts were very precious to her. Placing them in the JWV Archives ensures that they will be treated with the respect and dignity that they deserve. To coincide with Memorial Day, during the month of May the Archives’ showcase (located adjacent to the Sisterhood’s Gift Shop) will feature a display about Captain Cherry. His collection has been given Accession Number 2008.023.015.

**I am using Russi Cherry Arden’s spelling preference for Captain Cherry’s given name. The government’s report spells it Allen.*



Jewish
connections
to the movie
industry in
Michigan,
1900 - 1950.

A Jewish History Detectives Lecture Lights, Camera, Action!

**Tuesday, October 13
7 pm Maas Chapel**

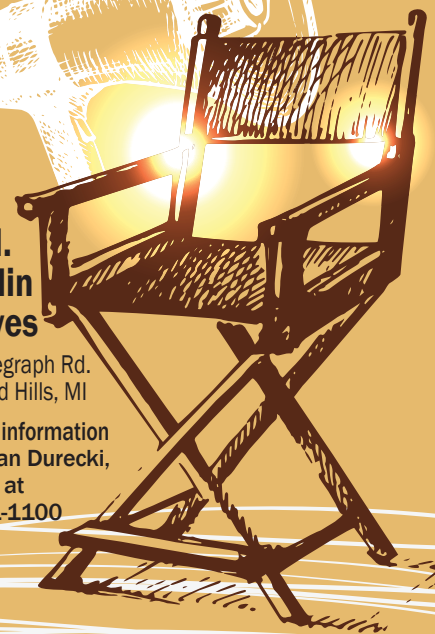
Save the date and join us for this interesting look at the early film industry in our home state.

A sincere thank you to Dr. Robert and Joan M. Jampel who underwrite this annual lecture series that focuses upon unique aspects of Jewish history at the local and state level.

**Leo M.
Franklin
Archives**

7400 Telegraph Rd.
Bloomfield Hills, MI

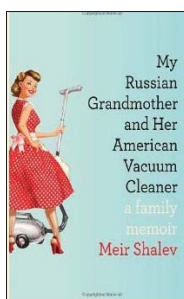
For more information
contact Jan Durecki,
Archivist at
248-851-1100



FINAL MEETING OF 2014 -2015

Bagels & Books/ Bites & Books

MONDAY, MAY 11



My Russian Grandmother and Her American Vacuum Cleaner

by Meir Shalev

Who can resist a book with a title like that? Shalev (A Pigeon and A Boy), brings to life his grandmother Tonia, the pioneers who gave his childhood on a kibbutz its spirit of wonder, and the grit and humor of people building new lives. "Grandma Tonia was never seen without a cleaning rag over her shoulder. She allowed only the most privileged guests to enter her spotless house. The fate of Tonia's "svieeperrr" – hidden away for decades in a bathroom – is a family mystery Shalev determines to solve."

Bagels & Books will meet in the Library at 10 am.

Bites & Books will meet in the Alpert Room at 7 pm.

The series cost is \$30 (\$25 for Friends of the Library & Sisterhood members.)

There is a \$10/session drop-in fee.

Prentis
MEMORIAL LIBRARY

LIBRARY HOURS:

Summer Hours:
Monday – Wednesday
10am – 4 pm



Contact Eileen Polk, Librarian at
epolk@tbeonline.org or
248.865.0627 with any
questions or comments, or to
RSVP for events.



We have come to the end of another Religious School year and it is time to check your homes, cars, backpacks, etc. for any overdue books. The notices will be going out soon to children and adults, so please help me save on postage by returning these volumes. There is no daily late fee, but you will be billed \$18 for unreturned books. Remember, if you have enjoyed what you have read, it is only fair to return it to the Library for someone else to enjoy!

AUTHOR APPEARANCE



Preparing for the Mystery, Getting Up Close with Mortality

Sara Davidson

The December Project

SUNDAY, MAY 3 at 9:30 AM

NO CHARGE



Mark your calendars to enjoy the Brotherhood breakfast and to stay and hear nationally acclaimed author, Sara Davidson, speak about her award-winning book, *The December Project. An Extraordinary Rabbi and A Skeptical Seeker Confront Life's Greatest Mystery.*

"In 2009, *New York Times* bestselling author Sara Davidson was surprised by a call from Rabbi Zalman Schachter-Shalomi, founder of the Jewish Renewal movement, asking her to engage with him in what he called "*The December Project.*" At eighty-five, Reb Zalman wanted to teach people how to navigate the December of life and to help them "not freak out about dying."

Davidson jumped at the chance. For two years, they met every Friday to discuss how getting "up close with mortality" quickens our ability to relish every day.

Woven through their talks are sketches from Reb Zalman's life: escaping the Nazis; becoming an orthodox rabbi in the U.S.; landing in San Francisco during the sexual revolution; taking L.S.D. with Timothy Leary; befriending other faith leaders, including Thomas Merton and the Dalai Lama.

Prentis Memorial Library
7400 Telegraph Rd., Bloomfield Hills, MI 48301
Questions contact Eileen Polk, Librarian at
epolk@tbeonline.org or 248.865.0627.

**There is no charge
to attend the
author talk.
The book
will be available for
purchase and
signing.**

*Join us for the
Brotherhood Breakfast
at 8:30 am.*

Coffee and bagel \$2.

Full breakfast \$3.

RAYMOND & SHIRLEY ABRAMS YOUTH GROUP RECREATION FUND

IN MEMORY OF

GRACE NAFTALY, BELOVED MOTHER & GRANDMOTHER

JEFFREY C. SURNOW, BELOVED HUSBAND, FATHER, BROTHER, UNCLE AND FRIEND
NORMAN WACHLER, BELOVED HUSBAND, FATHER, GRANDFATHER AND GREAT GRANDFATHER
SONIA GARFIELD, BELOVED MOTHER, GRANDMOTHER & GREAT GRANDMOTHER
STANLEY SNITZ, BELOVED FATHER, GRANDFATHER & FRIEND
SYLVIA HARVITH, BELOVED MOTHER, GRANDMOTHER AND GREAT GRANDMOTHER
Wendy & Henry Abrams & Family

DONALD CANVASSER MEMORIAL FUND

IN MEMORY OF

SYLVIA HARVITH
NORMAN WACHLER
Sandra and Thomas Millman

DEUTCHMAN FAMILY FUND

IN MEMORY OF

BUD SCHILLER
GERALD R. STRAUSS
Cathy & Jim Deutchman

RUTH FRANKLIN EINSTEIN EDUCATION ASSISTANCE FUND

IN HONOR OF

JANET MOSES MUCH LOVE AS YOU CELEBRATE YOUR BIRTHDAY
Peggy and Dennis Frank

RABBI LEO M. FRANKLIN ARCHIVES FUND

IN HONOR OF

A SUCCESSFUL RECOVERY AND FOR YOUR SPECIAL BIRTHDAY FOR MYRLE LELAND
Lois R. Weintraub
CINDY BOLOKOSKY FOR ALL HER DEDICATION TO TBE
Phyllis & Irv Kaplan
THE RECOVERY OF MYRLE LELAND
Phyllis & Irv Kaplan

DAVID C. FREDRICK HOLOCAUST REMEMBRANCE FUND

IN MEMORY OF

ELAINE & GEORGE MASKIN
ROSE & DAVID SILVER
Sharon and Richard Maskin

BARBARA PRENTIS FRENKEL MEMORIAL FUND

A CONTRIBUTION

Mr. Marvin Frenkel

GENERAL OPERATING FUND

IN MEMORY OF

GERALD R. STRAUSS
Deborah Morosohk
Lisa & Steve Rotter
JEFFREY SURNOW
Wendy & Ronnie Gruskin

MARABEL HACKELMAN

Audrie Friedman
RODMAN MYERS
Chuck Zamek

GLAZER ELEMENTARY SCHOOL ADA S. AND RABBI B. BENEDICT GLAZER MEMORIAL FUND

IN HONOR OF

BARBARA GRANT'S RETIREMENT
Mania & Mark Glazer

PAUL AND SONIA HANDLEMAN MEMORIAL FUND

IN MEMORY OF

BUD SCHILLER
GERALD R. STRAUSS
Rose & David Handleman

RABBI RICHARD C. AND RENDA HERTZ GIFT OF LIFE FUND

IN MEMORY OF

CURTIS BROWN
Ellen Lichterman
Lois Weintraub
GERALD R. STRAUSS
RODMAN N. MYERS
Alexandra and Jordon Wertheimer

DAVID HULL MEMORIAL FUND

IN MEMORY OF

DAVID J. HULL
Dave & Sharon Henderson
IN HONOR OF
BIRTHDAY OF KAREN HULL
Michael & Brenda Hull
Laura and Ron Ostreicher

HOWARD AND CELIA JACOBSON MEMORIAL FUND FOR THE BETH ELDERS OF TEMPLE BETH EL

IN MEMORY OF

ROBERT WERNEY
RODMAN MYERS
RUTH MERDLER
Renee & Tom Jablonski

CANTOR RACHEL KALMOWITZ DISCRETIONARY FUND

IN HONOR OF

THE BEAUTIFUL BAT MITZVAH OF RACHEL SHER
Stephanie & Jonathan Sher

CANTOR RACHEL KALMOWITZ MUSIC FUND

IN MEMORY OF

BUD SCHILLER
Wendy & Jeff Roth
EDWIN BLUMBERG
Barnet, Marcy, Lauren and Jason Leland
The Blumberg Family, The Tarnowsky Family
IN HONOR OF
THE SPEEDY RECOVERY OF HOWARD DUBIN
Wendy & Jeff Roth

THE BABS & HERB KAUFMAN LISTEN IN FUND

IN HONOR OF

15TH ANNIVERSARY OF
LOUIS & BARBARA BRADFIELD
35TH ANNIVERSARY OF
MARTIN & DEBRA DARVICK
35TH BIRTHDAY OF JORDON WERTHEIMER
50TH ANNIVERSARY OF DENNIS & PEGGY FRANK
85TH BIRTHDAY OF JO ISAACSON
90TH BIRTHDAY OF GEORGE SIMMONS
Babs & Herb Kaufman
ANNIVERSARY OF:
ANDREW AND GAYLE CAMDEN
DOUGLAS AND WENDY HAMBURGER
HARVEY AND MARLENE GOODMAN
JERRY AND BETTY SCHARE
Babs & Herb Kaufman
BIRTHDAY OF:
ALAN MAY
ANDREA PAGE
ARLENE GENDELMAN
BETTY SCHARE
CAROLYN GREENBERG
CATHY DEUTCHMAN
DAVID HANDLEMAN
ELLEN LICHTERMAN
ELLIN LAWSON
JEANNIE DUBIN
MARCIA HARRIS
MARGOT COVILLE
NORMAN ROTTER
Babs & Herb Kaufman

THE MIGNON H. AND EUGENE KRAFT FUND

IN MEMORY OF

GILBERT KAPLAN
Jackie & Larry Kraft

ELLIN & HAROLD LAWSON YOUTH INSTITUTE FUND

IN HONOR OF

THE BIRTHDAY OF ELLIN LAWSON.
HAPPY BIRTHDAY! WITH ALL MY LOVE,
John Lawson
THE 73RD RABBI B. BENEDICT & ADA. S. GLAZER
INSTITUTE ON JUDAISM
Best wishes always, Ellin Lawson and Family

MARSHALL & PHYLLIS LOEWENSTEIN FAMILY CAMPAERSHIP FUND

IN MEMORY OF

BERNICE BIRNKRAUT
Phyllis Loewenstein & Sheldon Plotnik

BERNARD L. MAAS ISRAEL BOND FUND FOR STUDENTS

IN MEMORY OF

NORMAN WACHLER
Benjamin Werbling

RABBI MILLER DISCRETIONARY FUND

IN MEMORY OF

GERALD R. STRAUSS

*The Executive Committee of Temple Beth El
John Kessler, David Foltyn, Todd Sable, Jordan
Worthheimer, Robin Fenberg, Liz Modell,
Raymond Rosenfeld, Warren Rose and Kim Raznik*

IN HONOR OF

THE BAT MITZVAH OF RACHEL SHER

Stephanie & Jonathan Sher

HARRY & SALLY NOSANCHUK CARING COMMUNITY FUND

IN MEMORY OF

ADDIE KURTZ

JOYCE CHESBROUGH

MARIAN MICKEY PELZNER LIPSHAW

WENDY WEITZMAN

The Sircus Family

BERNICE BIRNKKRANT

CHARLOTTE ARKIN

EDNA CHOSID

EDNA MINKIN

ESTHER KATZ

SYLVIA REDBLATT HARVITH

Mr. Harry Nosanchuk

The Sircus Family

GRACE NAFTALY

Mr. Harry Nosanchuk

IN HONOR OF

40TH ANNIVERSARY OF FREDDIE & ALAN HARVITH

45TH ANNIVERSARY OF

LESLEY & DR. BARRY FELDMAN

THE BAR MITZVAH OF ADAM KARP

THE BAR MITZVAH OF BRETT KOVAN

BIRTHDAY OF JOEL LERMAN

The Sircus Family

50TH ANNIVERSARY OF

BARBARA & SHELDON LARKY

Dr. Scott Sircus

THE SPEEDY RECOVERY OF DR. MURRAY LEVIN

Mr. Harry Nosanchuk

ONEG/ KIDDUSH FUND

IN MEMORY OF

MALVEINE LIPCHINSKY

Bertha Stearn

A CONTRIBUTION

Elizabeth Wojtowycz

FRIENDS OF THE PRENTIS LIBRARY FUND

IN MEMORY OF

ESTHER KATZ

John & Miriam Cohen

FRIEDA PLUDWINSKI

Jack Pludwinski & Family

IN MEMORY OF

HARRIET SKLAR

Denny Brown

HENRY PLUDWINSKI

Jack Pludwinski & Family

RODMAN MYERS

Eleanor Blum

ESTHER KATZ

Patti and Rick Phillips

IN HONOR OF

THE BIRTHDAY OF ELAINE GREENSPAN

Evelyn Bergman

THE SPECIAL BIRTHDAY OF MERYL LELAND

Milton & Barbara Schwartz

A CONTRIBUTION

Maria Abrahamsen

MEYER AND ANNA PRENTIS RELIGIOUS SCHOOL FUND IN MEMORY OF JIMMY MORRIS & WALLY STRAUS

IN HONOR OF

CINDY BOLOKOFSKY

Joan Jampel

SISTERHOOD PHILANTHROPIC FUND

IN MEMORY OF

RODMAN MYERS

Sue & Jeff Goldsmith

IN HONOR OF

THE 50TH ANNIVERSARY OF

FRANNIE & JULIAN GREENEBAUM

The Goldsmith Family

RABBI DANIEL SYME DISCRETIONARY FUND

IN MEMORY OF

EDWIN BLUMBERG

The Blumberg Family

The Tarnowsky Family

WILLIAM H. STEINHARDT

Marjorie Hecht Simon

IN HONOR OF

RABBI SYME

Michael Ligenza

THE BAT MITZVAH OF RACHEL SHER

Stephanie & Jonathan Sher

A CONTRIBUTION

Michael Ligenza

LOIS AND MARK SHAEVSKY FOOD ALLERGY AWARENESS FUND

IN HONOR OF

50TH ANNIVERSARY OF

MR. & MRS. JULIAN GREENEBAUM

Lois & Mark Shaevsky

WALTER M. STARK MEMORIAL FUND

IN HONOR OF

THE ANNIVERSARY OF:

EARL AND JACKIE REMER

JIM AND CATHY DEUTCHMAN

Margaret Stark

TEMPLE BETH EL ARCHIVES SUPPORT FUND

IN HONOR OF

MARION AND MICHAEL FREEDMAN. MAZEL TOV

ON YOUR 50TH WEDDING ANNIVERSARY!

David, Stacy and Gracie Gordon

A CONTRIBUTION

Jewish War Veterans, Elizabeth & Charles

Robinove, Elaine & Mark Schonberger

TEMPLE BETH EL MITZVAH MEAL FUND

IN MEMORY OF

BELOVED FATHER, DR. JACOB H. POLOZKER

Elaine Greenspan

EDNA CHOSID

Mary & Larry Epstein

GERALD R. STRAUSS

Brenda Schooley & Leonard Koltonow

INEZ MERRITT

Harriet & Mark Cooperman

ISSAY SHLEYPAK AND SHEINA VOSPE

Bella & Lev Shleypak

KAREN GRAFF. WE LOVED KAREN AND WE LOVE

YOU. FRAYDA, DAVID, JEFF, ALISON,

ERIC & KRISTIN

The Riger Family

MARABEL HACKELMAN

MY BELOVED HUSBAND, FRED E. GREENSPAN

MY BELOVED MOTHER, ANN B. POLOZKER

MY BELOVED SISTER, GLORIA J. KALLMAN

Elaine Greenspan

MY FATHER RICHARD MILLER

MY GRANDMOTHER, REBECCA GOODMAN

Regina & Al Piche

WILBERT KAIGLER.

Deloris Weinstein, Bob Dickstein, Deenie &

Michale Zonedner and Karen Lowen

GERALD R. STRAUSS

Cathy Segel

FOR THE YAHRZEIT OF BLANCHE LEVINE

AND LAWRENCE NEDELMAN

Laurie and Michael Nedelman

IN HONOR OF

RABBI DAN AND JILL SYME

Eleonor & Jeff Jenks

DEBBIE AND PAUL WALTER. THANK YOU FOR

A BEAUTIFUL SEDER.

Rita & Herb Packard

JIM HILLER

Myrle & Richard Leland

A CONTRIBUTION

Board of Trustees, Debbie & Eric Canvasser,

Eleonor & Jeff Jenks, John Kessler, Eric & Patrice

Phillips, Evelyn & Julian Prince, Sunday Minyan,

Torah Study Group

MAMIE AND JASON TICKTON MUSIC FUND

IN MEMORY OF

MARVIN GROSS

Carol & Stan Tickton

REUBAN LOPATIN

Barbara Kaye

MARCIA H. YOUNG MEMORIAL ISRAEL SCHOLARSHIP FUND

IN MEMORY OF

ESTHER KARZ

GERALD STRAUSS

Deena and Stuart Lockman

*** Tributes March 9 through April 7, 2015**

MAY ANNIVERSARIES

MAY 1 Eric and Wendy Slutzky	MAY 7 Andrew and Carol Bass	MAY 18 Jeremy and Elizabeth Modell	MAY 24 Stewart and Rochelle Frank Wendy and Ronald Gruskin Scott and Rae Monchnik Adam and Jodi Robin Adam and Kendra Rosenzweig	MAY 27 Matthew and Lisa Papsin Morris and Reesa Potash
MAY 2 Richard and Judith Komer-50 th	MAY 8 Clifford and Anita DeVine	MAY 19 Michael and Vanda Rybak	MAY 25 Robert and Michele Davis Carey and Rachel Kalmowitz Douglas and Gina Salzenstein S. Evan and Gwen Weiner-35 th	MAY 28 Matthew and Amy Kessler Jeffrey and Marsha Miro William and Carolyn Nosanchuk
MAY 3 Samuel and Ruth Talmer-45 th	MAY 9 James and Beth Hill	MAY 20 Jason and Randi Cooperman Ralph and Erica Gerson Eric and Julie Levine Jack and Catherine Marshall David and Holly Weissman-15 th Lawrence and Gail Zisholz		MAY 29 Edward and Linda Levy Jr-10 th James and Lynn Newman
MAY 4 Lawrence and Nancy Bluth	MAY 12 Harvey and Lois Freeman Brian and Elizabeth Guz-30 th	MAY 22 Jared and Jennifer Bortman Jason and Emily Dizik Fred and Jane Foreman Steven and Joyce Miller	MAY 26 Jay and Erica Greenberg Adam and Sara Levitsky-25 th Bernice and Anthony Rosenthal Trojan Brian and Michele Schubot L. Steven and Anne Weiner	MAY 30 Eugene and Marcia Applebaum Irwin and Gail Lorber
MAY 5 John and Judith Kamins Scott and Linda Sircus-30 th	MAY 13 Steven and Julie Brown-20 th	MAY 23 Donald and Marjory Epstein-45 th		MAY 31 Franklin and Mary Ann Grawi
MAY 6 Thomas and Kathleen August Randal and Adrienne Gordon Dana and Pierre-Louis Greenberg Marc and Julie Greenberger Michael and Julie Sher	MAY 14 James and Nancy Grosfeld-35 th			
	MAY 16 Barry and Margery Kaplan David and Michelle Lame Warren and Carol Rose			

MAY BIRTHDAYS

MAY 1 Shera Avi-Yonah Gail Mondry Sage Pancotto Stephen Sturman	Joyce LaBan Hannah Rosinski Sloane Schiller Bruce Stein Hyla Williams	MAY 10 Rachel Bletstein Rebecca Goodman Tatum Kalt Robert Katzman-70th Svetlana Kelman Rachel Rudman Phyllis Salomon Daniel Sandberg Sophie Schmier Harrison Shaevsky	MAY 15 Maxwell Apple Josh Cohen Donald M Cutler Nicole Drouillard Elaine Harris Paul Keller Charles Klein Frances Klingner Matthew Raisky Marion Rubin Helaine Steuer Jennifer Weinger	MAY 19 Lois Berk Byron Canvasser-85th Cheryl Chodun Elizabeth Engelson Ruth Marshall Edward Schulak-60th	MAY 24 Maria Abrahamsen Kolins Jeffrey Broder Chloe Crumrine Lena Epstein Clementine Joseff Dorothy Kahn Mitchell Kantor Martin Katz-70th Barbara Kaye Laura Lester Brooke Michelson Angela Morgan Susie Panza	Benjamin Cole Elizabeth Doran Kari Mahaffey Jared Rothberger Harold Wagenberg
MAY 2 Adam Egrin Cyril Feldman Miriam Imerman Scott Lester-25th Scott Sherman Kenneth Stone Lee Turner Alyse Yashinsky	MAY 6 Susan Farbman James Hill-40th Bennet Karmo David Khankin Nancy Myers Harrison Narens Lori Rapp Irving Steinberg Samuel Talmer Heidi Wineman III Morgan Wolfson Brooke Ziff	MAY 11 Isla Bruner Pamela Fireberg Marvin Goldman-95th Katherine Hansen Aaron Lowen	MAY 16 Richard Cooper Raquella Fireberg Ethan Frank Barbara Haber David Nelson Barbara Ravitz Thomas Sherman Stacy Weiss Dallas Wurn	MAY 20 Branson Paige Kathryn Pelton Nanci Rands Rachel Sher	MAY 25 Sydney Arnkoff Austin Chasnick Sara Eaker Maxwell Gross Ronald Kottler Marie Risov Mary Senter	MAY 29 Alexa Greenberger Joyce Kolin Stuart Litt Amy Miller Melissa Shaevisky Jeffrey Weiss
MAY 3 Julie Bartholomew Jessica Brownstein-20th Ari Byer Nancy Fine Marvin Frenkel Rheanna Henney Brighton Leder Michael Liss Sanford Passer Samuel Pernick Stuart Sinai Michael Zehnder	MAY 7 Casey Belen Dennis Gershenson Paul Halpern Adam Lynch Eileen Raider Andrew (AJ) Sherman Trista Shulman	MAY 12 Jonathan Dorfman Brian Galin-40th Pierce Gardner Sloane Goldberg Barbara Levine Dale Rands Myles Stern-70th	MAY 17 Danielle Branch Warren Coville-90th Harrison Diskin-25th Sanford Newman Jamie Ross Rachel Ross Flora Winton William Wiseman	MAY 21 Allison Egrin Bradley Freeman Walter Halpern-80th Merle Harris Arielle Inwald Kara Kales Richard Kulbersh Viktorya Strumban Sara Tatchio Roberta Viviano Trudi Wineman II	MAY 26 Samuel Bernson Eli Eisenberg Mollie Glasier Amanda Horwitz James Miller Lynn Radtke Kimberly Raznik Cooper Schoenberg	MAY 30 Zachary Abramson-25th Robert Barner Jr. Katherine Galin Lillian Glassman Freda Hurwitz Jackie Kraft Leah Pernick Ava Singer Noah Sorser
MAY 4 Maxwell Abrams Amy Byer Joseph Chaney Sam Chaney Vanda Fradlis Andrew Frenkel Chloe Giron Carly Rosenthal Renee Zahler	MAY 8 Joyce Epstein Scott Hamburger Sanford Klein Toby Kleinberg Gail Mandel Jessie Stern Elaine Wagenberg	MAY 13 Samuel Beigler Lorraine Blanck Steven Rotter Noah Ryke Stevie Ryke Evelyn Simon Cyvia Snyder Robert Weisberg	MAY 18 Henry Drouillard Barbara Epstein Michael Hermanoff Georgia Kux Simon Mirkes Maxwell Rotter Charles Sadoff Nancy Shapero Dylan Wolf	MAY 22 Tracey Burnstein Caitlyn Dolan Emma Dolan Mark Finn Robert Goldman Myra Harper Kenneth Korotkin Robert Levy Steven Miller Jennifer Prohrow	MAY 27 Nan Bailey Brandon Baril Michael Colman-30th Stacy Goodman Ann Harwood Josephine Kessler Gillian Waitzman	MAY 31 Jay Fishman Andrew Gorosh Isabella Gorosh Emily Johnson Sally Kohlenberg Solomon Kwartowitz Lisbeth Nordstrom- Lerner Margaret Stark
MAY 5 Logan Bernson Laura Eddleston Robert Finkel Edna Garte Erin Greenberger Jacob Hartman	MAY 9 Harrison Bloom Max Hirsch Jack Marwil Ryan Rosenber Jaden Ryke	MAY 14 Maxine Baker Steven Brown Wendy Gruskin Judith Marx Barry Shapiro Alexander Stamell Roberta Toll Matthew Turner Marilyn Wolpin		MAY 23 Michael Abrams Spencer Goldberg John Harris Jonathan Kottler Adam (Buddy) Sher Lois Stein	MAY 28 Brooks Barron Leonard Beznos Shari Cohen	

In Memoriam

WE NOTE WITH SORROW THE PASSING OF...

ARNOLD BERG. Husband of Barbara Berg; Father of Wendy (Ronald) Gruskin and Linda (Dr. William) Solomon. Grandfather of Jeffrey (Michelle) Solomon, Daniel (Lisa) Solomon, Jennifer Zeidman and Michael Zeidman.

ESTHER KATZ. Mother of Marlene and Harvey Goodman, Joanne and Terry Nosan and Jerry and Cathy Katz. Grandmother of Stacey and Joe Bernson, Lainie and Howard Ishbia, Brian and Tara Katz, Eric Katz, Marissa and Louis Shuster and Loren, Blair and Stephanie Nosan.

BUD SCHILLER. Father of Jayne (and Steven) Craig; Grandfather of Steven (and Alixandra) Craig and Andrew Craig.

A. ALFRED TAUBMAN. Husband of Judith Taubman; Father of Robert (Julie) Taubman, William (Ellen) Taubman and Gayle Taubman (Michael) Kalisman; Grandfather of Alexander Alfred Taubman, Ghislaine “Gogo” Taubman, Theodore Taubman, Sebastian Taubman, Jason Taubman Kalisman, Philip Taubman (Hilary) Kalisman, Oliver Taubman, Abigail Taubman and Tatiana Dubin; Great-grandfather to Aaron Falb Kalisman.

APRIL 26 - MAY 2

* COLMAN ADLER * ROSE AGREE * SAMUEL ASHERSON * GERTRUDE ASHNER * ROBERT BENYAS * MORRIS BLETSTEIN * SANDRA BLOOM * HENRY BURSTON * CHARLES CANVASSER * DAVID CLAMAGE * JACOB COHEN	* ROBERT COHEN * SIDNEY DEITCH * REBECCA DICKSTEIN * RICHARD EGRIN * RAY EISEN * TAUBA FELDMAN * CECILIA FRANK * LILLIAN GITLIN * ABRAHAM GOLDBERG * PETER GOLDMAN * IRWIN GOTTLIEB	* ISIDORE GRABOW * BESSIE HALPERIN * JOSEPH HARTMAN * JAMES HAUSER * VIRGINIA HELLER * FRANCES HOLSKIN * ESTHER HOROWITZ * NORMAN KAPLAN * ELSIE KATZ * MICHAEL KATZ * SAUL KATZ	* BERNARD KAUFMAN * HARRY KAUFMAN * RICHARD KAYE * ELMA KENT * MAYME KLING * GERALD LEVIN * TILLIE LINDENBAUM * MILTON MARKS * LOUIS MARX * RUTH MAZUR * BERNICE MILLER	* JEROME MILLER * SAMUEL MILLER * THE MILLION * ELMA RADER * ROSE RADER * CONSTANCE ROSS * FLORA SAFIR * RAYE SCHARE * BERT SCHLAIN * HARRIETT SCHRADER * SARA SEGAL	* ETTA SHAPERO * GUSSIE SHERMAN * SAM SIEGEL * BRENDA SMALL * ALAN SNIDERMAN * HYMAN SOBOLOFF * ARNOLD SOLOMON * DANIEL STAUB * SHIRLEY STEIN * ESTELLE TABACHNIK * BETTY TAYLOR	* ELEANOR WALKER * FRANK WEIL * CECIL WELFORD * BENJAMIN WILK * IDA WINNICK * ESTHER ZELEN * MILTON ZINBERG * REVA ZITOMER * JULIUS ZUCKERMAN
---	---	--	---	--	--	---

MAY 3 - MAY 9

* GEORGE ABRAMSOHN * WILLIAM ABRAMSON * SAMUEL BABCOCK * BRUCE BAKER * ANNE BELKIN * CELIA BIGELMAN * JULIUS BING * CECELIA BITTKER * JOHN BLOOM * SOL BRENNER * IRVING CHAPRACK * BESSIE COHEN	* CELIA COHEN * SHIRLEE COLE * JOHANNA CRAMER * MEYER FEINSTEIN * FRIEDA FEISENBERGER * CHARLES FENBERG * ZOIE FISH * GOLDYE FRANKLIN * ALEXANDER FREEMAN * MARTIN FRIED * WILLIAM GARD * MOLLIE GERSON	* MARCUS GINN * CELIA GOLDFARB * AARON GOTTLIEB * LILLIAN HABER * JOANNE HELPER * ABNER HOMBURGER * SUZANNE HOPP * MARIAN KOVINS JACOBS * HOWARD JACOBSON * SOPHIA KAHAN * MAX KALLIN * ROSE KAZDAN	* DIANE KEMPER * MELVIN KEVIN * FANNIE KOBLIN * IDA KOVINSKY * GERALDINE LESTER * LAWRENCE LEVI * JACK MALTZ * ROSALIE MANSELL * HARRY MUST * STUART NAGEL * HUGO PARSHALL * SAMUEL PRINCE	* SOL RICE * ELEANOR ROBERTS * JOYCE ROSE * SIMON ROSEN * TILLYE ROSENFELD * SAM ROSENFELD * ROY ROSENTHAL * JULIUS SCHECTER * LESLIE SCHEY * JUDITH SCHUMANN * DAVID SEGAL * JAMES SHAPIRO	* MAXWELL SHERMAN * YETTA SHUMER * EUGENE SIEGEL * ABE SILBERSTEIN * ANN SIMON * NORMAN SKY * MAX SLATKIN * DAN SOFER * MARGARET SOFFERIN * MARK SOLOMON * PAUL TALBERG * BERTHOLD TRIEST	* LY TRIEST * HERMAN UDAY * ARTHUR VAN VICTOR * LOTTIE WANGER * SEYMOUR WEITZMAN * DAVID WILKUS * JAMES WINEMAN
--	--	--	---	--	--	---

MAY 10 - MAY 16

* IRVING AARON * CHARLES ACKERMAN * SADIE ALPERT * EMANUEL BAKER * RUTH BLOCH * ISAAC BOBKIN * ROSE BOGROW * DAVID BRODY * JOSEPH CANTOR * ALAN CANVASSER * IDA CHATTMAN	* BABETTE COHEN * SOPHIE COLLINS * REBECCA DINETZ * DOROTHY EICHORN * NANCY EISNER * CLIFFORD FELDMAN * JEANETTE FINK * JEAN FRANKEL * LOU FREEDMAN * REUBEN FRIEDMAN * JOHN GINN	* SIDNEY GLASER * B. GLAZER * LENAARD GORAN * ROBERT GURWIN * BARBARA HANDEL * JAMES HELPER * ABRAM HERTZ * BOBBY JACOB * NORMAN JACOB * REBECCA KALLIN * JACOB LINDENBAUM	* BENJAMIN LIPTON * BEN LUTZ * BENARD MAAS * PHYLLIS MARKS * FRED MAYSELS * JOAN MILLSTONE * HAROLD NELSON * HAROLD NOSAN * MAX OPERMAN * JULIUS PARKER * SAMUEL PENCHANSKY	* BERNARD PINCUS * EDITH PLATT * JACOB POLOZKER * GRACE PRYSTOWSKY * MORRIS ROGOFF * JAY ROSEN * CECIL ROSENBERG * COLE ROSIN * MARGOT * SCHARTEBERG * EVELYN SCHUBOT	* RICHARD SCHUBOT * BERNARD SCHWARTZ * KENT SEEDMAN * ELAINE SELTZER * WILLIAM SLOMAN * ANNETTE SPOON * BRIAN STAPLETON * LOUIS STERN * SIDNEY STONE * ROSE TOLL * POLLY VAN BAALEN	* SYLVIA WEINBERGER * LEONARD WEINER * BEN WEINTRAUB * HEDWIG WIENER * FANNY WINKELMAN * IRVING WOLFGANG
--	---	--	---	---	---	---

MAY 17 - MAY 23

* HAROLD ALLEN * JOSEPH ALLEN * SYDNEY ACKERMAN * ELEANOR BENKOFF * NORMAN BESBRIS * EDWARD BICE * EVELYN BIEDERMAN * HOWARD BLOOM * ABRAHAM * BLOOMGARDEN * FRED BUTZEL * LEONA CHAFETZ * SELMA CLAMAGE	* ROSE COLMAN * MAX CRAINE * ALBERT DANIELS * JOSEPH DECKER * SAM DREYFOOS * ALFRED DUBE * ED EDWARDS * MILTON ELSON * ELSIE EPSTEIN * DAVID FARBER * LENA FINK * LILLY FRANKEL * HELEN FULLER	* DAVID GLASS * SAMUEL GOLDBERG * BERT GOEL * BARBARA GORZECK * RONALD GREENBERG * FAYE HALPERN * CHARLES HELMAN * RUTH HERMANOFF * JULIUS HOWARD * JULIUS JAMESON * FREDA JOSEPHSON * MORTON KANTER * JULIUS KARDEN	* RENEE KEEFE * CHARLES KOTTLER * GOLDA KROLIK * LILLIAN KUSCHINSKI * CALVIN KUTTNAUER * EVAN LAMIA * LEOTA LAVENE * NATHA LAVENE * MICHAEL LEVINE * HARRY LIGHTSTONE * BARBARA MARCUSE * EUGENE MONDRY * CAROL MYERS	* BEATRICE NEWMAN * BEN NOSANCHUK * HARLAN OBELER * SADIE PESICK * SAMUEL PRENSKY * FAY RAIDER * DAVID REDISCH * HARVEY REMER * ANNA RESNICK * SYLVIA RICHMAN * FAYE ROBINER * ETHEL ROBINSON * THEODORE ROGVOY	* ROSE ROSENBERG * HENRY ROSIN * GREGORY ROSS * MARK RUBENS * DAVID RUSKIN * SAMUEL SBOROW * LILA SCHNEIDER * ANN SCHONBERG * KEITH SEYMOUR * DORA SIGEL * HAROLD SIMON * MARGARET SIPORIN * HENRY SMALL	* SADIE SMALL * BELLA SNYDER * IRENE STERN * BENEDICT STRENG * CLARA WALDBOTT * MILDRED WAYBURN * EVA WEINBERGER * JOSEPHINE WINKELMAN * IRENA WINSTON * ROSE WOLF
--	--	--	---	---	--	---

MAY 24 - MAY 30

* RITA AGER * HENRIETTA ASCHER * GILBERT BARTON * CHARLES BENJAMIN * ROSALIND BERNHARDT * ROSE BERNSTEIN * ALVIN BUCH * SARAH BUCHSTANE * RILEY CHURCH * HARRY COHEN * BARBARA CONN * ANNA DANIELS	* BERNARD DEVINE * LEO FEDERMAN * CLIFFORD FELDMAN * LILLIAN FENBERG * LOREN FISCHER * HEATHER FISHER * WELSH * ZELDA FISHMAN * ANDREW FOLTYN * MARCUS FREUD * BERNICE GACH * RICHARD GALE	* SALLY GENDELMAN * SARAH GOTTLIEB * NORMA GRANT * SAMUEL GROSS * CATHERINE HARRIS * ELLA IMERMAN * IAN JABLONSKI * JOSEPH JABLONSKI * BEN JACOB * SOPHIA JACOB * THEODORE * JACOBOWITZ	* MAYBELLE KATZ * RUTH KAY * NANCY KAYE * FLORENCE KELLER * GERTRUDE KESTNBAUM * EVELYN KLEINMAN * MILTON KOROTKIN * IRENE LANDSMAN * BETTY LENCHNER * ELAINE LIPSITZ * ISADORE MALIN * JULIA MERDLER	* SARAH METZGER * SIDNEY MICHALS * ESTHER MINKOW * IRVING OZER * THERESA PEARL * BEN PLOTNIK * IRV POLLOCK * OLGA REVENO * JERRY ROBERTS * SARAH ROWIN * ALFRED SANDELMAN * ELAINE SAUVE	* FRED SCHARTEBERG * RUTH SCHECTER * ANDREW SCHLESINGER * MAURICE SCHUBOT * WILLIAM SCHWARTZ * DAVID SILVER * SALLY SILVERMAN * WALDO SLOMAN * FRANCES SOLOMON * ETHEL STEINBERG * LESLIE SURATH * GARY TABACK	* JEROME TOBIAS * CLEMENT WEITZMAN * MILLIE WOLF * MIRIAM WOLNOWICZ * HENRY ZEESMAN * MILTON ZIMMERMAN
---	---	--	--	---	---	---

Please consult the Shabbat Schedule on page 19 for Service times. * Denotes Memorial Plaque will be lit in the Goldman Memorial Room.

MAY 2015

7:30 pm	FRIDAY 1 Music Shabbat honoring the retirement of Arlene Keller Religious School Graduation
9:00 am 10:30 am 12:30 pm 6:00 pm	SATURDAY 2 Torah Study Shabbat Services Bar Mitzvah of Noah Jeremy Sklar The Origins of Christianity: An Introduction YPS Lock In (Pick-up is Sunday, May 3 at 9 am)
8:30 am 9:30 am 9:45 am Noon	SUNDAY 3 Grades 3-5 Sunday Only Option RS Jewish Hero Museum Brotherhood Breakfast Sunday Minyan Religious School Author Appearance-Sara Davidson Religious School Parent Meeting Religious School B'nai Mitzvah Club Kick-off Event
9:30 am 10:30 am 11:30 am 4:30 pm	WEDNESDAY 6 Torah Study Class Advanced Hebrew Conversational Hebrew B'nai Mitzvah Club Religious School
	THURSDAY 7 <i>Lag B'Omer</i>
6:00 pm 7:30 pm	FRIDAY 8 Family Kabbalat Shabbat Shabbat Services
9:00 am 9:30 am 10:30 am	SATURDAY 9 Torah Study Tot Shabbat Shabbat Services Bar Mitzvah of Andrew Henry Frenkel Mattan Torah
8:30 am 9:30 am	SUNDAY 10 Brotherhood Breakfast Sunday Minyan
10:00 am 7:00 pm	MONDAY 11 Bagels & Books Bites & Books
7:00 pm	TUESDAY 12 TBE Choir Rehearsal
9:30 am 10:30 am 11:30 am 12:30 pm 4:30 pm 7:30 pm	WEDNESDAY 13 Torah Study Class Advanced Hebrew Conversational Hebrew End of Life Decision Making B'nai Mitzvah Club End of Life Decision Making
7:30 pm	FRIDAY 15 Shabbat Services with TBE Choir

9:00 am 10:30 am 6:00 pm 8:30 am 9:30 am 1:30 pm	SATURDAY 16 Torah Study Shabbat Services Bat Mitzvah of Abigail Kathryn Scavone Sisterhood Progressive Dinner
9:30 am 10:30 am 11:30 am 4:30 pm	SUNDAY 17 Brotherhood Breakfast Sunday Minyan Walk for Israel at Temple Shir Shalom
9:30 am 10:30 am 11:30 am 4:30 pm	WEDNESDAY 20 Torah Study Class Advanced Hebrew Conversational Hebrew B'nai Mitzvah Club
7:15 pm	THURSDAY 21 Board of Trustees Meeting
7:30 pm	FRIDAY 22 Shabbat Services Confirmation
9:00 am 10:30 am	SATURDAY 23 Torah Study Shabbat Services Bar Mitzvah of Thomas Benjamin Sherman
8:30 am 9:30 am 10:30 am	SUNDAY 24 <i>Shavout</i> Brotherhood Breakfast Sunday Minyan Yizkor Service
Noon-3 pm	TUESDAY 26 Mitzvah Meals Pick Up
9:30 am 10:30 am 11:30 am 12:30 pm 4:30 pm 7:30 pm	WEDNESDAY 27 Torah Study Class Advanced Hebrew Conversational Hebrew End of Life Decision Making B'nai Mitzvah Club End of Life Decision Making
5:30 pm 6:00 pm 7:30 pm	THURSDAY 28 JEWnoirs Movie Night
5:30 pm 6:00 pm 7:30 pm	FRIDAY 29 Camp Beth El Small Fri Shabbat Brotherhood Installation Dinner & Shabbat Shabbat Services Confirmation
9:00 am 9:30 am 10:30 am	SATURDAY 30 Torah Study Tot Shabbat Shabbat Services Bar Mitzvah of Alexa Irina Greenberger
8:30 am 9:30 am	SUNDAY 31 Brotherhood Breakfast Sunday Minyan

MARK YOUR CALENDARS!

JUNE 5
Summer Kick-Off Shabbat and BBQ!

JUNE 10 & 24
End of Life Decision Making

JUNE 13-28
Great Lakes Chamber Music Festival

June 14
TBE Family trip to Cedar Point

165TH ANNUAL MEETING

THURSDAY, JUNE 25
7:30 PM HANDLEMAN HALL

JUNE 15 - AUGUST 7
Camp Beth El

JULY 19
Community Motown Concert

JUNE 20, JULY 11 and AUGUST 15
Havdallah In The Park

OCTOBER 13
Jewish History Detectives Lecture:
Lights, Camera, Action!

OCTOBER 13-25
Journey to Israel

save 
date
11 | 07 | 15
TBE 165 Gala

Join us in
celebration
of our 165th
Anniversary
at Temple's
Gala Event

BOARD MEETING SCHEDULED

The May meeting of the Temple Board of Trustees is scheduled for Thursday, May 21 at 7:15 pm in the Board Room.

Shabbat Services

Your Spirit, Your Life, Your Temple.

FRIDAY EVENING, MAY 1

- 5:30 pm Religious School Graduation and Dinner
7:30 pm Music Shabbat honoring Arlene Keller,
Religious School Principal on her retirement.

SATURDAY MORNING, MAY 2

- 9:00 am Torah Study
10:30 am Shabbat Services: Parashah/Torah portion of the week:
Acharei Mot/K'doshim /Leviticus 16:1–20:27

BAR MITZVAH OF NOAH JEREMY SKLAR (Yosef Nachman)



Noah attends Norup International School in Oak Park, Michigan. He studies classical and jazz piano, plays percussion in the school band, is on the tennis team and plays baseball. For his Mitzvah project, he performed a series of piano recitals at the Jewish Federation senior apartments and assisted living facilities in the area, and shared his love of music with them. His Torah portion and

Mitzvah project strengthened his pride in being Jewish and becoming Bar Mitzvah. Noah is the son of Mr. Michael Sklar and Ms. Elizabeth Rowin. He is the grandson of Mrs. Helen Rowin and the late Gerald Rowin, and Mrs. Judith Sklar and the late Dr. Nelson Sklar. Sharing in Noah's simcha is his brother Ari Jonathan Sklar. The Oneg following Noah's Bar Mitzvah will be sponsored by Noah's grandparents, Helen Rowin and Judith Sklar.

FRIDAY EVENING, MAY 8

- 6:00 pm Kabbalat Shabbat
7:30 pm Shabbat Services

SATURDAY MORNING, MAY 9

- 9:00 am Torah Study
9:30 am Tot Shabbat
10:30 am Shabbat Services: Parashah/Torah portion of the week:
Emor/Leviticus 2 1:1-24:23

BAR MITZVAH OF ANDREW HENRY FRENKEL



Andrew is a 7th grade student at Birmingham Covington school. He enjoys playing baseball, hanging out with friends and attending Camp Tamarack. His mitzvah project was working with the 5th graders and helped NCJW with their Backpack Program. Andrew is the son of Meredith Frenkel and Martin Frenkel. He has a sister,

Rachel. He is the grandson of Barbara and Robert Bachman and Candy and Gary Frenkel.

FRIDAY EVENING, MAY 15

- 7:30 pm Shabbat Services with TBE Choir

SATURDAY MORNING, MAY 16

- 9:00 am Torah Study
10:30 am Shabbat Services: Parashah/Torah portion of the week: B'chukotai/Leviticus 26:3-27:34

BAT MITZVAH OF ABIGAIL KATHRYN SCAVONE



Abigail is a 7th grade student at Derby Middle School. Abigail is on the school track team, plays soccer, and loves to play the cello and is currently performing with her middle school orchestra as well as the Dearborn Youth Symphony. In her spare time, she enjoys writing stories, watching movies, traveling, and spending time with

friends and family. On Sundays, she helps in the religious school as a madricha. Abigail is the daughter of Michelle and Nicholas Scavone, Jr, and sister to Henry. She is the granddaughter of Dr. Richard & Linda Hertzberg and the late Nicholas & Judy Scavone.

FRIDAY EVENING, MAY 22

- 7:30 pm Shabbat Services
Confirmation

SATURDAY MORNING, MAY 23

- 9:00 am Torah Study
10:30 am Shabbat Services: Parashah/Torah portion of the week: B'midbar/Numbers 1:1-4:20

BAR MITZVAH OF THOMAS BENJAMIN SHERMAN



Tommy is a 7th grader at Detroit Country Day Middle School. Tommy's Mitzvah project was working with the three year olds at Temple Beth El Day Camp. Tommy enjoyed helping teach the newest members of our community. He is the son of Emily and Ted Sheman and the older brother of AJ and Addie. He is the grandson of Joan &

Robert Jampel and Renee & Jerry Sherman.

FRIDAY EVENING, MAY 29

- 5:30 pm Camp Beth El Small Fri Shabbat
7:30 pm Shabbat Services honoring TBE's Brotherhood

SATURDAY MORNING, MAY 30

- 9:00 am Torah Study
10:30 am Shabbat Services: Parashah/Torah portion of the week: Naso/Numbers 4:21-7:89

BAT MITZVAH OF ALEXA IRINA GREENBERGER



Lexi goes to Derby Middle School. She is a loving sister to Erin, Jonathan and Mitchell. Lexi plays trumpet, swims, plays soccer, volleyball and lacrosse. She enjoys her mitzvah project being a madricha in the office at Temple Beth El. Lexi is the daughter of Dr. Julie Buch and Dr. Marc Greenberger and the granddaughter of Mr. and

Mrs. Marcia and Alvin (deceased) Buch, Dr. Robert Greenberger, Mrs. Eileen Greenberger (deceased) and Mrs. Renee Durbin.



TEMPLE
BETH EL

7400 Telegraph Road
Bloomfield Hills, Michigan 48301
248 851-1100
www.tbeonline.org



save ^{THE}
date
11 | 07 | 15

TBE 165 Gala

Join us in celebration of
Temple Beth El's 165th
Anniversary at
TBE 165 Gala Event!

Periodicals
Postage Paid at
Royal Oak, MI

TIME VALUED

CLERGY

Mark Miller, Rabbi
Daniel B. Syme, Rabbi
Rachel Gottlieb Kalmowitz, Cantorial Soloist
John H. Redfield, Honorary Cantor Emeritus

STAFF

Kim Raznik, Executive Director
Deborah Morosohk, RJE, Director of Education
Abby Suckow, Chief Financial Officer
Allan N. Friant, Sr., Building Superintendent
Arlene Keller, Religious School Principal
Lauren Blitz, Director of Early Childhood Education
Rachel Rudman, Program Director
Halie Aisner, Communications Coordinator
Marie Curtis, Graphic Design
Alan Lowen, B'nai Mitzvah Coordinator
Jan Durecki, Archivist
Eileen Polk, Librarian
Joe Winter, Cemetery Superintendent
Thomas Jablonski, Executive Director Emeritus

OFFICERS

L. Steven Weiner, President
John Kessler, First Vice President
David Foltyn, Vice President
E. Todd Sable, Vice President
Jordan Wertheimer, Vice President
Robin Fenberg, Treasurer
Liz Modell, Secretary

AFFILIATES

Betty Schare & Elaine Brockman, Beth Elders
Jeffrey Hollander, Brotherhood
Janelle McCammon, Sisterhood
Loren Schwartzfeld & Forest Wolfe, The Kid-ish Club
Mitch Boorstein, Young People's Society

TEMPLE BETH EL
PRESENTS



End-of-Life Decision Making: The Law, Jewish Tradition, and Practical Concerns



Presented by
ANDREW J. BRODER

with
Rabbi Mark Miller and
Rabbi Daniel Syme

*Each session will be
presented Wednesdays*

**12:30 PM and
7:30 PM at
TEMPLE BETH EL**

OPEN TO THE COMMUNITY
NO CHARGE

Light refreshments.
Advance reservations encouraged.

In cooperation with



For more details or to RSVP, contact
Julie Rolnick at jrolnick@tbeonline.org or
248.851.1100 ext. 3143.

SESSION ONE - APRIL 29: End-of-Life Decisions, Legal Perspective

SESSION TWO - MAY 13: End-of-Life Decisions, Jewish Perspective

SESSION THREE - MAY 27: Common Myths and FAQ
*With guest presenter, Dr. Michael Paletta,
a palliative care expert.*

SESSION FOUR - JUNE 10: Advance Directives

SESSION FIVE - JUNE 24: Dealing with Disputes & Conflicts
Regarding End-of-Life Decisions