

tbe

BULLETIN

MARCH 2020 ADAR 5780

VOL. 34 ISSUE 5



MARCH 1955

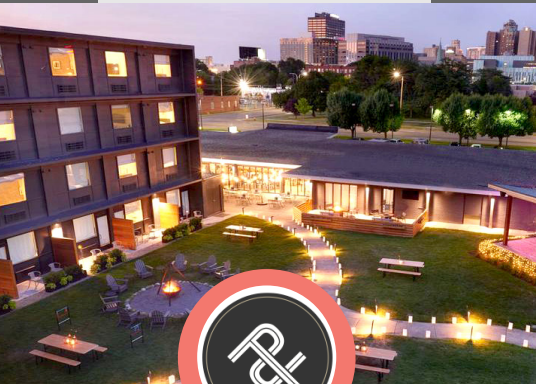
TEL AVIV PURIM CARNIVAL POSTER ... (DETAILS PG 3)

WOMEN'S RETREAT

23
HOURS
RELAX
UNWIND
ENGAGE

Join us for a
relaxing and
energizing
overnight
getaway!

FRIDAY, MAY 8 -
SATURDAY, MAY 9



TRUMBULL &
PORTER HOTEL

1331 Trumbull - Detroit

For more information or to
RSVP, contact Rabbi Brudney at
248.851.1100 or
mbrudney@tbeonline.org.

PURIM GLEE!

INCREASED JOY



Shalom Everybody,

What an exciting time it is at TBE! Purim is upon us and I can't wait to see many of you in the coming weeks, whether at our Kid-ish Club Purim Blowout, Hamilton-themed Adult Purim Spiel, and/or Purim Carnival. Ever since I came to TBE I've started calling Purim the spring High Holiday because of all that we do to celebrate it right—and we can't do it without your enthusiastic participation!

What you might not know is that Adar, the month in which Purim takes place, is in itself a special time (which in fact already began way back on February 26th!). The Talmud tells us "*mishenichnas Adar marbim b'simcha*"—when Adar begins, we increase in joy (Talmud Bavli Ta'anit 29b). It's a month when we're supposed to be happy!

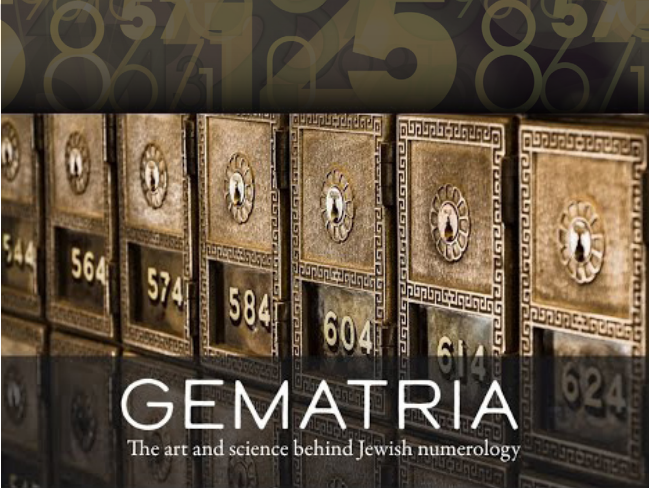
Interestingly, however, that mandate comes in direct response to a Mishnah discussing several tragic events that have happened in Jewish history on the 9th day of the month of Av (Ta'anit 4:6). That section ends by stating, "*mishenichnas Av, m'matin b'simcha*"—when the month of Av begins, we reduce our joy. Out of respect for the painful times our people has endured, we're supposed to act in a more muted way. (And there are several traditional customs to help communicate that mood—for instance not listening to live music, not cutting one's hair, and not eating meat.)

And yet, hundreds of years after the statement about the gloom of Av, the rabbis see it and reply with a corresponding statement about the cheer of Adar. Our tradition so ably balances between disparate feelings and lets them each have their own time—asking us neither to stew in mourning for too long nor to remain happy-go-lucky for too long.

We at Temple are here for you both in your joyful times and in your times of pain—whether or not they happen to correspond to the Hebrew months. Please feel free to contact your clergy or anyone in the Temple office to share with us moments when you feel the glee of Purim as well as when you feel the sorrow of Av. I also warmly invite our women congregants to join me on our fourth annual Women's Retreat (see left) where we come together to relax, unwind, and engage while sharing our own highs and lows. I hope to see you there!

L'shalom,

RABBI MEGAN BRUDNEY
mbrudney@tbeonline.org



GEMATRIA

The art and science behind Jewish numerology

In January and February, more than 30 Temple members and guests came together for a 5-week course on Jewish Mysticism. Our tradition is filled with deep wisdom and startling insights, and we thought it would be fun to share some of those in the Bulletin each month ...

**DID
YOU KNOW**



GEMATRIA (Hebrew term for Jewish numerology) comes from the Greek word “geographia” and has been used by dozens of ancient civilizations to reveal connections

between words based on the numeric value of their letters. For example, 18 is a special number in Jewish tradition because the word Chai (life) is made up of the letters Chet (8) and a Yud (10). Taking it one step further, the words for God (Elohim) and Nature (HaTeva) both add up to 86, which tells us that there is a deep connection between the two!

RABBI MARK MILLER

CONTENTS

FEBRUARY 2020

04-05 HIDDEN IN PLAIN SIGHT

05 WE ARE PROUD

06-07 BROTHERHOOD 100 YEARS

10-14 UPCOMING EVENTS

16-18 AROUND TEMPLE/FOCUS GROUPS

19-21 EDUCATION

22-25 LIFE CYCLES/YAHRZEITS/TRIBUTES

26 MARCH CALENDAR

27 SHABBAT SERVICES



TEMPLE
BETH EL

COVER

This poster advertises Purim festivities in Tel Aviv from March 5-10, 1955. The bright yellow poster is illustrated with a picture of Haman looking downward with an angry, blue face leading Mordechai on the king's horse who sits proudly with a crown on his head.

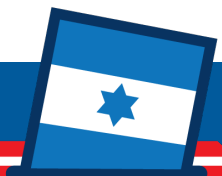


The poster advertises an *adloyada* parade and Purim carnival. The emblem of the municipality of Tel Aviv-Jaffa is printed in the upper right-hand corner of the poster, which reflects ancient Persia, the location of the Purim story. Designed by Israeli graphic designers, Samuel Grundman and Paul Kor in 1955.

VOTE REFORM

ELECTIONS TAKE PLACE JANUARY 21 – MARCH 11, 2020 AND YOUR VOTE IS CRITICAL TO MAINTAINING A LARGE REFORM AND RECONSTRUCTIONIST PRESENCE IN THE WORLD ZIONIST CONGRESS.

There are voting tables set up in the main lobby of Temple Beth El for your convenience. Or just go to zionistelection.org, and then let us know that you voted! To learn more, visit ARZA.org. Check out their Facebook page and/or Instagram page to stay up-to-date with voting information and additional ways to help spread the word.



**VOTE
TODAY
IN OUR
SLOTKIN FOYER!**

 #VoteReformWZC

HIDDEN IN PLAIN SIGHT

HISTORY UNCOVERED

*An Afternoon of
Architecture,
Art, and History*

**SUNDAY, APRIL 19
3:30 PM**

- **STROLLING APPETIZERS
AND COCKTAILS**
- **FEATURED EXHIBITS**
- **CURATED DOCENT
STATIONS**

Throughout the building, special exhibits will showcase community builders and their impact on Metro Detroit and beyond. Exhibit features will include Leonard N. Simons Rare Judaica Book Exhibit, Aid Kushner Synagogue Models Exhibit, and Rabbi Richard C. Hertz Exhibit. The Rabbi Hertz Collection, with roughly 50 boxes of archive material and photographs, is recently ready for researchers' use.

PINNACLE EVENT SPONSORS:

John & Ella Imerman Foundation
Dr. Robert & Joan M. Jampel
Jo-Ann MacWilliams-Wolf
The Meyer & Anna Prentis Family
Walter Shapero & Kathleen Straus

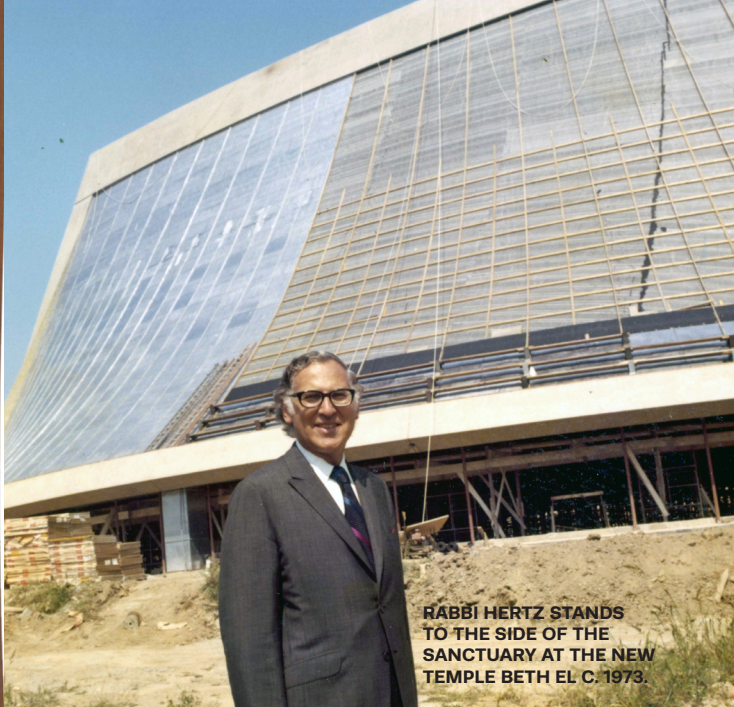
Join us for a fabulous afternoon finding out what's Hidden in Plain Sight. The Rabbi Leo M. Franklin Archives and the Anna S. & Meyer L. Prentis Memorial Library at Temple Beth El presents Hidden in Plain Sight: An Afternoon of Architecture, Art, and History. This unique fundraising event will take our guests through several exhibits and stations throughout the building, each with a docent-led discussion on the artifacts, art, or historical significance within that exhibit area.

Our goal is to raise awareness of Beth El along with the Jewish History of Metro-Detroit. Funds raised will be used to further both the library's and archive's educational programming, community building initiatives, and the preservation and promotion of Temple Beth El's incredible cultural assets.

With your support we can continue to expand the access to engaging resources that educate Beth El members and community partners throughout the region. Hidden in Plain Sight will showcase the artifacts and architectural features of Temple Beth El. While at Temple we are often in proximity to these treasures without realizing the history, their true meaning, and the magnitude of their legacies.

The Pre-Glow guest speaker is John Gallagher, author of *Yamasaki in Detroit: A Search for Serenity*. The book surveys Yamasaki's life and works which includes our own Temple Beth El. His presentation will cover a general biography of Yamasaki and what he brought to the TBE project. In particular, he will talk about Yamasaki's deliberate connections to nature.

Gallagher is a veteran journalist and author, and a 2017 inductee into the Michigan Journalism Hall of Fame. Born in New York City and educated at DePaul University in Chicago and Columbia in New York, John joined the Detroit Free Press in 1987 to cover urban and economic development. For the next 32 years he wrote authoritatively



**RABBI HERTZ STANDS
TO THE SIDE OF THE
SANCTUARY AT THE NEW
TEMPLE BETH EL C. 1973.**



**L-R: ROBERT CANVASSER, BENARD L. MAAS, MINORU
YAMASAKI, PAUL HANDLEMAN, AND RABBI RICHARD C.
HERTZ VIEWING THE MODEL OF THE NEW TBE BUILDING.**

on real estate, architecture, urban planning, economics, labor, and other issues touching Detroit and Michigan. During those same years he also authored five books on the worlds of architecture and urban redevelopment, including "Reimagining Detroit: Opportunities for Redefining an American City," which the Huffington Post named as one of the best social and political books of 2010. John retired from the newspaper at the end of 2019 but continues to pursue his work through book projects, public speaking, and other avenues.

**For more information or to become a sponsor, contact
Laura Williams at llwilliams@tbeonline.org or 248.851.1100.**

MESSAGE FROM EVENT CHAIR, WENDY ROSE BICE

Temple Beth El has the unique position of being Michigan's first organized Jewish congregation. Thankfully, over these past 170 years, many prescient congregants and congregational leaders took great pains to preserve our legacy by maintaining a library, curating important artifacts and artworks, and establishing one of Jewish Detroit's most revered archival collections. Thanks to a resurgence of interest and usage, we are now in a position to create innovative experiences with which to share these resources. Hidden In Plain Sight highlights not only these important collections but also the incredible cultural center TBE has become.

HIDDEN IN PLAIN SIGHT - APRIL 19

☐ **\$54 GENERAL ADMISSION**

SPONSORSHIP OPPORTUNITIES:

- ☐ **\$250 CRAFTSMAN:** 2 tickets to main event, name in marketing
- ☐ **\$500 DESIGN:** 2 tickets to pre-glow* and main event, name in marketing, signed copy of *Yamasaki in Detroit*
- ☐ **\$1,000 ARCHITECT:** 4 tickets to pre-glow* and main event, name in marketing, signed copy of *Yamasaki in Detroit*

*PRE GLOW - 2:30 PM

Sponsors at \$500+ are invited to a special pre-glow

- Featured Speaker: John Gallagher, author of *Yamasaki in Detroit*
- Hors d'oeuvres and Sparkling Wine
- Signed copy of *Yamasaki in Detroit*

I/WWE WISH TO PAY BY:

- () CREDIT 3% convenience fee
- () DEBIT no convenience fee

Account # _____

Exp _____ Sec Code # _____

() CHECK ENCLOSED

() ELECTRONIC CHECK (ACH) -
no convenience fee

Name(s) on account: _____

() Checking () Savings

Bank Name _____

Routing # _____

Account # _____

PLEASE MAIL FORM AND PAYMENT TO:

Temple Beth El - Attention: LAURA WILLIAMS
7400 Telegraph Road, Bloomfield Hills, MI 48301

A FELLOWSHIP AMONG MEMBERS



The **end of World War II** marked the beginning of the Golden Age for the Men's Club as returning soldiers flocked to join the group. Suddenly, it possessed both the manpower and the resources to take on multiple program areas at the same time.

There was a flowering of both Club-run and Club-funded programming. Club members ushered during services, provided security for Temple events, and directed traffic at High Holidays. The Club led a layman's religious service, started presenting prayer books to Temple high school graduates, and funded six scholarships to Reform Movement summer camps. The Club initiated a Sunday morning breakfast and established a Kitchen Committee which provided food for Club meetings and youth group activities. The Club sponsored a bowling league, created an essay contest for religious school students, strengthened its support of the Boy Scout troop, and refurbished the Youth Group room. In addition, members gathered 125 tons of food for shipment to refugee camps, and a committee offered employment counseling to returning veterans.

The Men's Club brought Christian clergy to Temple and sent TBE rabbis to churches. It strongly supported the interfaith work of the Jewish Chautauqua Society, and sponsored speakers on the state of race relations, the evils of segregation, and other topics of the day. Discussion programs became vibrant events.

The **1950s** saw a further shift of resources to youth related endeavors. Club funds paid for the Youth Choir's annual holiday party, the annual Religious School picnic, and supported the Purim Party. The Men's Club expanded its programming for fathers and their children. It underwrote a youth basketball league, a debate team, and a religious school awards program. The number of camping scholarships increased. The Men's Club paid for youth group trips to regional and national leadership training conferences. It also organized a lecture series for parents, with notable topics including mental health and issues specific to fathers of teenagers.

In the **1960s** the Club established a Mitzvah Corps to visit the homes of ill Temple members and to lead shiva services. It also increased joint programming with Sisterhood and the Married Group. With the draft still a reality for young men, the Club continued the practice of sending Passover and Hanukkah gifts to service personnel. Club budgets of the period also reflect allocations for adult Jewish education, Israel bonds, the Jewish Book Fair, and the continued support of the Allied Jewish Campaign.

The TBE Library: Its Transformation and More with Laura Williams

SUNDAY, MARCH 15

9:00 AM Breakfast

9:40 AM Speaker



Laura Williams, TBE's Director of Cultural Resources, will speak about how our Prentis Memorial Library has been transformed to make it more flexible and inviting for both children and adults. The Library now has become an integral part of Temple, hosting many educational and cultural activities. Laura will also describe "Hidden in Plain Sight," (pg. 7) the unique fundraising event for the Library and the Archives coming up on April 19.

SAVE THE DATE for our next Brotherhood Speaker

SUNDAY, APRIL 26

9:40 AM



BROTHERHOOD RETREAT C 1950S

Club membership reached in excess of 900 in the 1960s. Yet, the clergy felt that Club programs lacked religious focus and failed to instill Jewish values. In response, the Club created home study groups, expanded an "Evening with the Rabbi" series, held Religious Fellowship Retreat weekends, and paid for adult Jewish education classes for its members.

Activities aimed at college students became part of Brotherhood's programming. This included a summer job placement fair as well as dinners held in Ann Arbor and East Lansing for students of Beth El families. College students away from home - like military personnel in the past - began receiving Hanukkah and Passover gifts.

The **1980s** and **90s** brought expanded social action activities and cultural programming. Teams volunteered at area soup kitchens, homeless shelters, and nursing homes, as well as held food drives for Russian immigrants. The Brotherhood inaugurated a Mother's Day Champagne Brunch and a Father's Day picnic. It won numerous national awards for its programming, including a speakers' series that culminated with a talk by Cardinal Adam Maida. Yet, membership had begun a slow decline. The reasons for this decline rested largely with causes outside the organization's control. These causes and the group's future will be discussed in the third and final segment on the Brotherhood's history in an upcoming Bulletin.

LARRY IMERMAN
BROTHERHOOD PAST PRESIDENT



The movement of Jews to Oakland County accelerated after **1967**. The Club

financed bus transportation from Oakland County to Temple, but also began shifting Club meetings to Oakland County locations.

Beginning in **1970**, Club volunteers started replacing non-Jewish volunteers at local hospitals on Christmas Day. This effort evolved into Federation's Mitzvah Day. American Red Cross blood drives were also regularly held at Temple. The Club's newsletter, The Mirror, restarted after an 18-year hiatus. Notably, the TBE Men's Club became the TBE Brotherhood as it followed a national trend to focus less on the group and more on the unity between and among members.



▲ BROTHERHOOD COLLECTION C 1970S

▼ BROTHERHOOD COOKING CLASS 1987



WE ARE PROUD

WORTH NOTING



SALLY B. KOHLENBERG

SALLY B. KOHLENBERG

Temple Beth El member Sally B. Kohlenberg was recently recognized by the City of Huntington Woods for her 40 years of service to the City of Huntington Woods Library. A proclamation was cited at the City Commission Meeting at Huntington Woods City Hall on Tuesday, February 4th by Mayor Robert F. Paul, III.

Sally and her late husband, Martin, have lived in Huntington Woods for over 52 years where they raised their children, Larry and Julie. Sally is the proud grandmother of Jared, Liza and Gemma.



DR. BRIAN BERMAN

2020 PILLARS OF VIBRANCY

DR. BRIAN BERMAN KEITH POMEROY

Mazel Tov to members Dr. Brian Berman and Keith Pomeroy for being the 2020 Pillars of Vibrancy honorees at the Community House Fifth Annual Bates Street Society dinner in February.

Bates Street Society



KEITH POMEROY

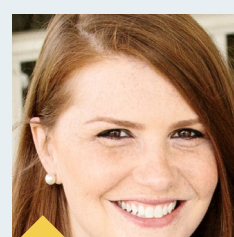
The Bates Street Society Dinner recognizes The Community House's annual Pillars of Vibrancy honorees for their work and contributions in the areas of education, culture, wellness, business and philanthropy, all aligning with the work and mission of the Community House.



VADIM AVSHALUMOV



JACKIE ISSNER



HANNAH KESSLER

SHARE YOUR
SIMCHAS

- FAMILY ENGAGEMENTS • MARRIAGES • BIRTHS
- SPECIAL ACCOMPLISHMENTS

NEW ARRIVALS



ALEXANDRA ROSE RAPPAPORT

BORN DECEMBER 29, 2019

PARENTS:
SARAH & MATTHEW RAPPAPORT

Grandparents: Cynthia & John Vleko, Ilene Rappaport & Milt Fisk, Lisa & Mark Rappaport



MAXWELL RICHARD VICTOR

BORN DECEMBER 31, 2019

PARENTS:
ERICA & JUSTIN VICTOR

Grandparents: Sheryl & Douglas Victor, Julie Marks
Great-grandparents: Phyllis Kaplan, Mary Mastroianni



CHARLIE ELLA GABBARD

BORN JANUARY 21, 2020

PARENTS:
DANIELLE & MATT GABBARD

Grandparents: Denise & Bobby Levin, Karen Gabbard, Bob Gabbard



NORAH FAYE ROBERTS

BORN JANUARY 22, 2020

PARENTS:
JESSICA & JOEY ROBERTS

Grandparents: Judy & Scott Roberts, Laurie & Jeff Cook
Great-grandparents: Phyllis Loewenstein & Sheldon Plotnik



ISLA GABRIELLE GOLDBERG

BORN JANUARY 24, 2020

PARENTS:
ELANA ACKERMAN & ANDREW GOLDBERG

Grandparents: Sharyl & Alan Ackerman, Lori & Mark Goldberg
Great-grandmother: Paula Taub



CASH RUMOUR KOROTKIN

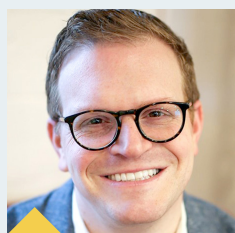
BORN FEBRUARY 14, 2020

PARENTS:
STACY & EMILY KOROTKIN

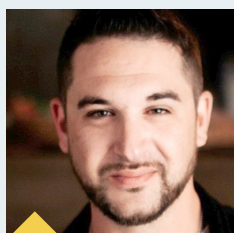
Grandparents: Kenneth Korotkin, Carol & Larry Skalsky, Diane Meitzner



DANIEL ROSENBERG



DANIEL STEIN



ZACHARY WISH


36 UNDER 36 HONOREES 2020

Vadim Avshalumov, Jackie Issner, Hannah Kessler, Daniel Rosenberg, Daniel Stein, Zachary Wish were six of the Honorees. More than 70 names of young professionals making an impact in the Detroit Jewish community were submitted to this program, sponsored by The Well and the Detroit Jewish News. The nominees were sent to a panel of impartial volunteer judges who had the difficult task of choosing 36 names from the list of impressive submissions.

If you or a family member would like us to share your good news in the TBE Bulletin, contact Lindsey at lfoxwagner@tbeonline.org or 248.851.1100.

TBE UPCOMING PROGRAMS/EVENTS

MARCH



**CELEBRATE
RUTH BADER GINSBURG'S
87TH BIRTHDAY
WITH SISTERHOOD!
SUNDAY, MARCH 15
2:00 PM**

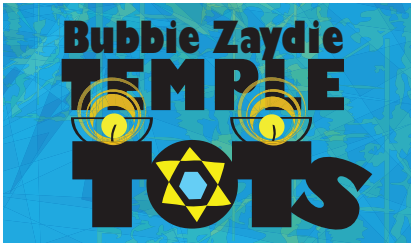
**WE'LL SCREEN "RBG,"
THE DOCUMENTARY FILM**
focusing on the life and career
of Supreme Court Justice
Ruth Bader Ginsburg.

**MOVIE MUNCHIES &
SPECIAL DESSERT INCLUDED.**
\$5 in advance, \$8 at the door.

RSVP to Karen Lowen at
248.444.8329 or
Nancy Fortier at 248.495.5013.



**AIPAC
POLICY 2020
CONFERENCE**
MARCH 1-3 • WASHINGTON, D.C.



01 **BUBBIE ZAYDIE
TEMPLE TOTS**
SUNDAY, MARCH 1
10:00 – 11:00 AM

Calling all Bubbies, Zaydies, Grandmas, Grandpas, Nannas, Pappas, Savtas and Sabas! Grandparents with their grandchildren. 1 year – Pre K. Enjoy creating lasting memories. Meet in the ECC gym. Facilitated by an Early Childhood Educator. Free & open to the community. For more information, contact Debbie Morosohk at dmorosohk@tbeonline.org or 248.851.1100.



**MASORET:
THE
COLLABORATIVE
DIVORCE
PROCESS**
SUNDAY, MARCH 1
**Amy Byer, Domestic
and Family Attorney**

01

Discussion will focus on differences between the Collaborative Divorce Process and traditional litigated divorce. This alternative process encourages more amicability, less contention, and is more in line with Jewish values. For more information, contact Deborah Morosohk at dmorosohk@tbeonline.org or 248.325.9708.

**BETY 35 CREATIVE ARTS
STUDIO**
MARCH 1 *(details pg. 21)*

**ECC SIPS, SNACKS AND
SHOPPING**
MARCH 5 *(details pg. 19)*

**KID-ISH CLUB PURIM
BLOWOUT**
MARCH 6 *(details ➡)*

ADULT PURIM PARTY
MARCH 7 *(details ➡)*

FRIDAY, MARCH 6 @ 5:30 PM



Purim BLOWOUT

Come in costume and ready to party at our annual Purim Blowout!

\$5 PER CHILD
\$10 PER ADULT

We'll start with Purim songs and continue with dinner, bounce houses, a balloon artist, and more!

For more information or to RSVP, contact Jennifer Ritchie at jritchie@tbeonline.org or 248.865.0602.

TBE Kid-ish Club

SATURDAY, MARCH 7 @ 7 PM

BE OUR GUEST AT TEMPLE'S TAVERN

ADULT PURIM PARTY SPIEL

HAMILTON

ENJOY ...

Delicious drinks, food from Hunter House, Wing Snob and more, while participating in our interactive, back-by-popular-demand, adult Purim spiel...Hamilton

\$10 SUGGESTED DONATION

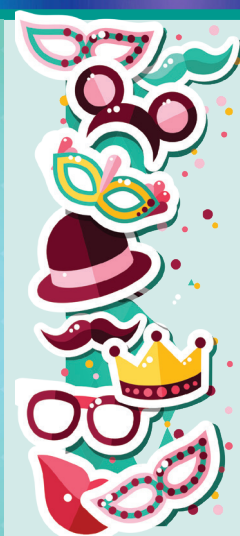
SPONSORED BY: SUE GREEN & JIM MARKS

HUNTER HOUSE HAMBURGERS

WING SNOB

For more information or to RSVP, contact Danielle at dgordon@tbeonline.org or 248.851.1100

SUNDAY, MARCH 8



PURIM CARNIVAL

HIGHLIGHTS INCLUDE

- MECHANICAL BULL
- NEW** INFLATABLE AXE THROWING
- NEW** VIRTUAL REALITY EXPERIENCE
- INFLATABLE OBSTACLE COURSE

To become a donor or to volunteer, contact Scott at slowen@tbeonline.org or 248.851.1100.

- 11:15 AM MEGILLAH READING**
Youth Choir Hamilton
Purim Spiel
- NOON – 2:00 PM CARNIVAL TICKETS**
\$20 Bracelet (unlimited tickets) or .50 cents per ticket
Kiddle Carnival (0-5 years old)
\$10 Bracelet (unlimited tickets)
*Lunch not included with ticket purchase, cash only for lunch.
In Partnership with Sisterhood and Brotherhood!

Tea and Tantrums

with Franki Bagdade
of Franki's Academic & Behavioral Consulting



Wednesday, March 25
9:15-10:15 AM

(following ECC drop off)

Enjoy coffee, tea
and snacks

FREE & OPEN
TO TBE & ECC MEMBERS



Franki has over 20 years of experience in the world of children with extra needs—non-traditional learning environments, camping and everything in between. She has worked in all types of

classrooms from special needs resource room to general education, pre-school through high school as a teacher consultant, resource room coordinator, and professional development trainer. Franki graduated from Michigan State University with a BA in Elementary Education and Wayne State University with a MA in Special Education.

AROUND TEMPLE

TBE UPCOMING PROGRAMS/EVENTS

MARCH

**HAMILTON PURIM SPIEL
WITH YOUTH CHOIR**
MARCH 8 *(details pg. 11)*

PURIM CARNIVAL
MARCH 8 *(details pg. 11)*

**BROTHERHOOD SPEAKER
"THE TBE LIBRARY"**
MARCH 15 *(details pg. 6)*

**CELEBRATE RUTH BADER
GINSBURG'S 87TH BIRTHDAY**
MARCH 15 *(details pg. 10)*

**78TH ANNUAL RABBI B.
AND ADA S. GLAZER
INSTITUTE ON JUDAISM**
MARCH 16 *(details pg. ➔)*



**19 AN AFTERNOON
WITH MUSICIAN
AVY SCHREIBER**
THURSDAY, MARCH 19
NOON

Join the Beth Elders for lunch and an afternoon of entertainment by one-man band, Avy Schreiber. He is a world-renowned singer, pianist, and songwriter. Deli lunch from Pickles & Rye (\$10). RSVP by March 13 to Danielle Gordon at 248.851.1100 or dgordon@tbeonline.org.



**19 SISTERHOOD
GAME DAY**
THURSDAY, MARCH 19
11:00 AM

Canasta, Mahjong, Poker, Bridge, Rummikub, Scrabble. Bring your games & friends! Join us for GameDay hosted by the Sisterhood. \$8 by noon the Monday before GameDay, or \$10 at the door. Lunch, snacks, and card tables provided. RSVP to Karen Lowen at 248.444.8329.

SHABBAT
IN THE
ROUND



**20 SHABBAT IN
THE ROUND**
FRIDAY, MARCH 20
7:00 PM
SANCTUARY FOYER

Please join us for a participatory service using rounds as our guide – in shaping our space, in sharing our music, and in bringing each other into a circle of ruach (spirit) and prayer.



**MASORET:
Navigating The
Complex World Of
Immigration**
Patricia Luber,
Immigration Attorney
SUNDAY, MARCH 22

22 A discussion of changes in the law, impact on immigrants nationally and locally, recent media coverage, and myths/facts about immigration. For more information, contact Deborah Morosohk at dmosohk@tbeonline.org or 248.325.9708.

ANNOUNCING THE 78TH ANNUAL
RABBI B. BENEDICT & ADA S.
GLAZER
INSTITUTE ON JUDAISM



TEMPLE
BETH EL

In partnership with:



SHALOM HARTMAN מכון
INSTITUTE הרטמן שלום

ENTERING EACH OTHER'S FAITH NARRATIVES:

A Religious Jew's Journey into Islam and Christianity



SPEAKER

**YOSSI KLEIN
HALEVI**

Senior Research Fellow
and Co-Director, Muslim
Leadership Initiative, Shalom
Hartman Institute.

Each year, Temple Beth El hosts the Glazer Institute as an interfaith forum to build relationships, learn from one another, and take vital steps toward creating a stronger community across Metro Detroit.

This year, Israeli author Yossi Klein Halevi shares his story at Temple Beth El. Nearly 20 years ago, he went on a unique spiritual journey, spending a year in Palestinian society encountering the faiths of his neighbors. That journey led to personal transformation, and to a remarkable breakthrough in Muslim-Jewish relations.

🕒 **MONDAY, MARCH 16, 2020 | 7:30 PM**

FREE OF CHARGE

DESSERT RECEPTION IMMEDIATELY FOLLOWING LECTURE

For more information and to RSVP, contact Jennifer at jritchie@tbeonline.org or 248.851.1100.

Our Glazer Institute is the longest-running Interfaith Institute in the country, celebrating Temple Beth El's historic and growing commitment to interfaith relations.



AJC



Jewish Federation
OF METROPOLITAN DETROIT

LIBRARY MAKE & TAKE

March Moscow Mules & Manhattans!

**TUESDAY, MARCH 31
6:30 PM** (Prentis Memorial Library)

Join award-winning bartender Chas Williams as he takes you step-by-step in making drinks that are sure to impress. Tastings along the way will add to the fun.

**Member/ECC Parent \$25
Non-Member \$36**

Price includes tutorials, tastings, and tool kit to take home.

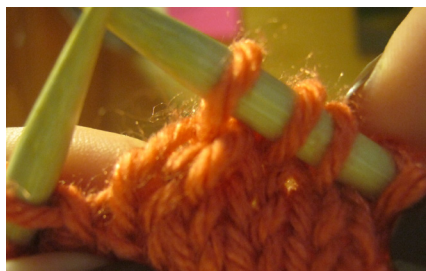
RSVP to lwilliams@tbeonline.org by March 17 to reserve your spot – spaces are limited!

Generously
sponsored
by Miriam
and John
Cohen

AROUND TEMPLE

TBE UPCOMING PROGRAMS/EVENTS

MARCH



25

**KNITTING, CRAFTS
AND LAUGHS**
WED, MARCH 25
5:00 PM

Meet and socialize with knitters and crafters in the Prentis Memorial Library! For more information, contact Helen Sorser at 248.798.7087.



26

**BEREAVEMENT
SUPPORT GROUP**
THURSDAY, MARCH 26
7:00 PM

Come together in a safe and supportive environment. Facilitated by a psychologist

specializing in grief and loss. Free & open to the community. For more information, contact Danielle Gordon at 248.851.1100 or dgordon@tbeonline.org.

BETY MICHIGAN PEDDLER
MARCH 28 (details pg. 21)



28

**SCHMOOZE @ THE
HOUSE OF PURE VIN**
FRIDAY, MARCH 28

Join us in Birmingham for an evening at the House of Pure Vin – \$40 per person.

WOMEN'S SEDER
MARCH 29 (details ➡)

OPERATION FINALE
MARCH 30 (details ⬇)

**MARCH MOSCOW MULES &
MANHATTANS!**
MARCH 31 (details ⬅)

Film Screening & Discussion



Discussion and Q&A
after the film led by:



Rabbi Mark Miller

Visit our special exhibit, *Operation Finale: The Capture & Trial of Adolf Eichmann*, on view through June 7.

Open Sunday to Friday. Exhibit is free with admission or membership.

Operation Finale

Starring Oscar Isaac
and Ben Kingsley

**Monday, March 30
at 5:30 PM**

**Holocaust Memorial Center
Zekelman Family Campus**
28123 Orchard Lake Rd
Farmington Hills, MI 48334



Bringing Women
TOGETHER



Temple Beth El

WOMEN'S SEDER

SUNDAY, MARCH 29
5:00 PM

Wine, Dinner, and
Activities

We'll put a spotlight on the women in the Passover narrative and get ourselves spiritually ready for the holiday.

\$25 TEMPLE MEMBER/ECC PARENT
\$30 NON-MEMBER
\$18 TEEN

RSVP and payment to Ilene Stone at
248.865.0612 or istone@tbeonline.org.

For more information contact
Debbie Morosohk at 248.325.9708 or
dmorosohk@tbeonline.org.

Make Passover a family affair and join us at the Beth El 2nd Night Seder

THURSDAY, APRIL 9
6:00PM HANDLEMAN HALL

Enjoy a delicious Passover meal without the cooking or cleanup! Join your TBE clergy and friends to experience the story of our freedom. The interactive Seder will include music, a special activity for kids, prizes for the Afikoman, and more.

\$50 PER ADULT / \$30 PER CHILD CHILDREN 3 AND UNDER ARE FREE!

Advanced registration to 248.325.9706 or dgordon@tbeonline.org by
March 27 is required. Reservations can be made online at www.tbeonline.org.

Name (s) _____

Phone _____

Email _____

Address _____

City _____ Zip _____

Number of Adult (s) Attending _____ @ \$50 per person = \$ _____

Number of Children Attending _____ @ \$30 per child = \$ _____

Number of Children 3 & Under Attending _____

Please note any dietary needs: _____

Please note any seating requests: _____

My check is enclosed \$ _____ or Charge to my

☐ VISA ☐ MASTERCARD ☐ AMEX

* Credit card transactions will incur a mandatory non-refundable 3% convenience fee.
* No convenience fee for debit card transactions.

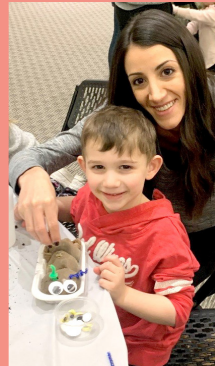
Card # _____

exp. date _____ sec. code _____

Name on Card _____

Total Number of People Attending _____ (Including Children)

SAVE \$5
PER PERSON!
REGISTER BEFORE
MARCH 20



TU BISH'VAT PARTY RECAP

Even though there was snow outside, we were busy celebrating the new year for the trees! ECC Director Susie Weiner helped us make our own creative caterpillars that will sprout grass in just a few days. And don't miss out when we party hard for Purim next month! *(details pg. 11)*





TU BISH'VAT LIBRARY PAPER FLOWER WORKSHOP

What an incredible afternoon spent creating, chatting, and enjoying the company of a great group! Our Paper Flower Workshop with Meaghan Keck was so much fun and all got to walk away with beautiful creations to help us combat the snowy weather outside. Check out these photos of the final products and stay tuned for more Library Make-and-Take workshops coming up. A special "Thank You!" to our event sponsors Miriam and John Cohen!



Interfaith

LGBTQ+

Race

Disabilities

JOIN A FOCUS GROUP

HELP TBE BECOME
A MORE INCLUSIVE
COMMUNITY BY SHARING
YOUR THOUGHTS
AND EXPERIENCES

COFFEE & SNACKS

INTERFAITH COUPLES AND FAMILIES

If you are in an interfaith relationship or raising children in an interfaith home, and are interested in discussing interfaith inclusion at TBE and beyond, this focus group is for you.

JEWS OF COLOR

If you identify as a Jew of Color and are interested in discussing racial and ethnic diversity at TBE and beyond, this focus group is for you.

LGBTQ+ JEWS

If you identify as lesbian, gay, bisexual, transgender and/or queer, and you're interested in discussing LGBTQ+ inclusion at TBE and beyond, this focus group is for you.

JEWS WITH DISABILITIES

If you live with a physical disability, and you're interested in discussing accessibility at TBE and beyond, this focus group is for you.

To join a focus group or for more information, contact Alicia Chandler, Chair of the Audacious Hospitality Committee, at aliciablumenfeldchandler@gmail.com or 248-763-3694.

FOCUS GROUPS will begin meeting in March based on the schedules of those involved.

NEW MEMBER SHABBAT

On February 7, more than 80 people came together to welcome and celebrate our newest Temple members at our New Member Shabbat dinner. New member families enjoyed a complimentary meal and got to know one another, as well as our clergy, staff, and Board members. After dinner, new member families joined us for Music Shabbat and received a special blessing on the bima from our clergy. It was a wonderful evening!



CALENDAR

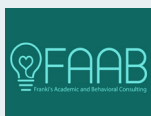
SIPS, SNACKS AND SHOPPING

THURSDAY, MARCH 5
6:00-8:00 PM



Join us for a Style Social!
Hosted by EVEREVE, 128 S.
Old Woodward, Birmingham.
15% of purchases benefit
Temple Beth El's ECC. RSVP
to Erin Simmerman at erinlowen@gmail.com or
Nicole Vanhouse at nicole.vanhouse@gmail.com.

TEA AND TANTRUMS WITH FRANKI BAGDADE OF FAAB



WEDNESDAY, MARCH 25
9:15-10:15 AM
(details pg. 12)

APRIL 6-10: Vacation – No School
MONDAY, APRIL 13: School Resumes

ECC PASSOVER SING ALONG

MONDAY, APRIL 13
9:00 AM



Please celebrate with us
as Mr. Matt and Ms. Sam
lead us in Passover songs
and dances in Handleman
Hall. Get your frog feet ready for jumping as the
entire ECC comes together in a big circle to
sing and create community.

WEDNESDAY, APRIL 15:
Last day of Passover – No School

KIDZ BOP

SUNDAY, APRIL 26
5:00 PM (details ➔)

SPECIAL PERSON DAY

MONDAY, MAY 11
9:00 – 10:00 AM

MONDAY, MAY 25:
Memorial Day – No School

FRIDAY, MAY 29:
Shavuot – No School

THURSDAY, JUNE 4:
Last full day of School

END-OF-YEAR CELEBRATION PRE-K MOVING ON CEREMONY

FRIDAY, JUNE 5

MONDAY, JUNE 15: Camp Begins

KIDZ BOP FUNDRAISER

Enjoy a fun
evening with:

- ★ Dinner
- ★ Dancing
- ★ Photo op with
Olaf and Elsa
- ★ Prizes
- ★ Air Brush
Tattoos
- ★ And so much
more!

For more
information
contact Emily at
ebarnett@tbeonline.org or
248.851.1100.



SUNDAY
APRIL 26
5:00 PM

\$50 per family (maximum of 5)
Additional tickets: \$10 per adult / \$5 per kid

BUY TICKETS TODAY AT TBEONLINE.ORG

TBE

ELLIN &
HAROLD
LAWSON
YOUTH



SHABBATON

at the
Walled Lake
Outdoor
Education
Center

*6th, 7th, and 8th
Graders join us for
a exciting overnight
experience beginning at
4 pm on May 1 through
5 pm on May 2.*



**CAMPFIRE
HIGH ROPES COURSE
ZIPLINE
HANG OUT WITH FRIENDS**

We'll travel by bus to the outdoor center. The program will include playing, praying, and experiencing a beautiful Shabbat in the middle of one of Southeastern Michigan's natural settings.

**NO CHARGE
REGISTRATION REQUIRED BY APRIL 17**

For more information, contact
Scott Lowen at slowen@tbeonline.org.

MASA FAMILY PROGRAMS

FRIDAY, JANUARY 10



4th and 5th grade families gathered for project presentations. Students had been working on projects since the fall based on various mitzvot they had been studying. One group wrote and illustrated a children's book on Kindness to Animals, another created a brochure promoting Protecting the Earth, and another created a video commercial on Feeding the Hungry. Following the presentations, families stayed for Shabbat dinner and services.

SUNDAY, JANUARY 12



Kindergarten families spent the morning at Masa learning about the Shma. They created a family bedtime prayer, sang a bedtime shma, and created beautiful shma pillowcases.

SUNDAY, JANUARY 26



1st grade families spent the morning learning about Shabbat and Havdalah. Families made their own Havdalah candles, spice boxes, and kiddush cups. They considered what is holy in their lives and shared their thoughts at a mock Havdalah service.

YOUTH CALENDAR

BETY35

GRADES 3-5

BETY 35 – CREATIVE ART STUDIO

MARCH 1 / NOON – 2:00 PM (Lunch provided)

CREATIVE ARTS STUDIO – 114 W FOURTH ST., ROYAL OAK

TBE 3rd – 5th Graders – We want to see your art skills! This is a do-it-yourself event which will feature a variety of different art projects including pottery painting, mosaics, glass fusing, wax hands and spin art. Join us and spend the afternoon painting, crafting, and having fun! Lunch will be provided at the studio.

LOCK-IN AT TBE

(Dinner & breakfast provided)

APRIL 18 – 19 / 7 PM – 9:30 AM

Come join your Beth El friends, new and old, for a fun night with snacks, games, and movies and spend the night at temple!

JBETY

GRADES 6 – 8

PURIM SET-UP

(Lunch provided)

MARCH 7 / 2:00 – 6:00 PM

PURIM CARNIVAL

(Lunch provided)

MARCH 8 / NOON – 2:00 PM

(details pg. 11)

SHABBATON

MAY 1 – 2 / 4 PM – 5 PM

(WALLED LAKE OUTDOOR EDUCATION CENTER)

BETY

GRADES 9 – 12

THE MICHIGAN PEDDLER

SATURDAY, MARCH 28 / 2:00 – 5:30 PM

Spring is in on its way and nothing says spring like exploring downtown on a pedal bike! Join us as we pedal the streets of Eastern Market and downtown. We'll explore all kinds of things that make Detroit great, while listening to music and being with friends. We will leave Temple at 2:00 pm and Return to TBE at 5:30 pm. RSVP required by March 23. (\$10.00 per person)

LOCK-IN AT TBE

(Dinner & breakfast provided)

APRIL 25 – 26 / 6 PM – 9:30 AM

As we approach the end of our year we want to celebrate! Please join us for food, drinks, games, entertainment, and time with friends, old and new. A very important part of the evening will be electing our 2020-2021 BETY Board. These leaders will help shape our youth programming for the coming year.

For more information on any of these programs, if you are able to be a driver or to RSVP, contact Scott Lowen at 248.851.1100 ext 3125 or slowen@tbeonline.org.

K-5 PARENTS NIGHT OUT

ENJOY A NIGHT OUT WHILE YOUR KIDS HAVE FUN!

SATURDAY, APRIL 18 @ 7:15 PM

After you drop off your kids at Temple for the BETY35 Lock-in, join Cantor Rachel at The Morrie in Birmingham, for live music, hors d'oeuvres, and a cocktail ... on us!



OUR YOUTH GROUPS HAVE BEEN BUSY!

BETY (high school students) showed off their driving skills with a great afternoon at JD Racing! JBETY (middle school students) spent time bumping into one another at a fun afternoon playing Whirlyball!!

**RAYMOND & SHIRLEY ABRAMS
YOUTH GROUP RECREATION FUND****IN MEMORY OF**

RICHARD LUDWIG
Wendy & Henry Abrams

**RABBI BRUDNEY
DISCRETIONARY FUND****IN MEMORY OF**

JENNIFER STAMLER
BETTY JANE STAMLER
Joel Jonas & Patricia Stamler

THE DIZIK FAMILY MEMORIAL FUND**IN MEMORY OF**

DIEGO MESA
HARVEY GOODMAN
Elizabeth & Mark Dizik

BROTHERHOOD FUND**IN MEMORY OF**

DIEGO MESA
Harriet & Mark Cooperman

**FRIENDS OF THE PRENTIS
LIBRARY FUND****IN MEMORY OF**

CHARLES BROH
Evelyn & Julian Prince

IN HONOR OF

SHELDON STERN'S 90TH BIRTHDAY
Evelyn & Julian Prince

GENERAL OPERATING FUND**IN MEMORY OF**

ALMA HOURVITZ
Leonard Hourvitz
CHARLOTTE RUBINSTEIN
Arlene & Mark Rubinstein
DIEGO MESA
Carol & Steve Tarnowsky
JOACHIM NACHBAR
Rae Nachbar
LINDA MOSSMAN
Brenda & Sandy Passer
PHYLLIS POTACH
Reesa & Morris Potash
RICHARD LUDWIG
Brenda & Sandy Passer
ROSELEE STOLER
Barbara Cohen

IN HONOR OF

TEMPLE'S LEADERSHIP TEAM
Shapack Family Fund

A DONATION

Emily Panza

**THE MICHELSON-HABER
MEMORIAL FUND****IN MEMORY OF**

DIEGO MESA
DR. MEL LESTER
Wendy & Douglas Hamburger

**RABBI RICHARD C. & RENDA HERTZ
GIFT OF LIFE FUND****IN MEMORY OF**

PARENTS, HELEN S. AND JAY W. ALLEN
Lisa Allen

**CANTOR RACHEL GOTTLIEB
KALMOWITZ DISCRETIONARY FUND****IN HONOR OF**

THE BEAUTIFUL BABY NAMING OF
SOPHIA BOBROW
Laura and Josh Bobrow

**THE MIGNON H. & EUGENE
KRAFT FUND****IN HONOR OF**

A DONATION
The Serta Restokraft Sales Team

**AID & MIRIAM KUSHNER
MEMORIAL FUND****IN MEMORY OF**

MAX LAPIDES
Sissi Lapides

**DAVID & JEANETTE LEACH COLLEGE
SCHOLARSHIP FUND****IN MEMORY OF**

JAMES J. HALL
LINDA MOSSMAN
George Leach

**FREDERICK H. MARX
MEMORIAL FUND****IN MEMORY OF**

HERBIE SHANBAUM
MIRIAM SHENKMAN
Sally Marx & Family

IN HONOR OF

SPECIAL BIRTHDAY OF DONALD EPSTEIN
Sally Marx & Family, Michael & Jeannette Wertheimer

**DELIA IMERMAN MEYERS
MEMORIAL FUND****IN MEMORY OF**

HARVEY LIPSITZ
Arlene & Mark Rubinstein

RABBI MILLER DISCRETIONARY FUND**IN MEMORY OF**

MAX LAPIDES
Marie & Jerry Curtis

A DONATION

Dr. William Leutcher

**HARRY & SALLY NOSANCHUK CARING
COMMUNITY FUND****IN MEMORY OF**

BARRY MICHAEL KLEIN
RICHARD D. BLEZNAK
Harry Nosanchuk

IN HONOR OF

ANNIVERSARY OF
CHARLOTTE & AL SALZMAN
ANNIVERSARY OF SHELLY & PETER COOPER
BIRTHDAY OF HERBERT WEBER
BIRTHDAY OF HILARY SIRCUS
BIRTHDAY OF MARLA CANVASSER
BIRTHDAY OF MICHAEL BIRNKRANT
BIRTHDAY OF ROBERT BRODY
BIRTHDAY OF SHELLY COOPER
Harry Nosanchuk

ONEG/ KIDDUSH FUND**IN MEMORY OF**

NORMAN BLOCK
Eileen Millstone

**LOIS & MARK SHAEVSKY FOOD
ALLERGY AWARENESS FUND****IN MEMORY OF**

ROSE LEVI
Lois & Mark Shaevsky and Family

SISTERHOOD BRAILLE FUND**IN MEMORY OF**

DIEGO MESA
DOLORES HUSTON
MARILYN FREEDMAN
STEWART LEVIN
Karen & Alan Lowen
VIVIAN KOPPELMAN
Phyllis Kaplan

IN HONOR OF

BIRTH OF MAXWELL RICHARD VICTOR
Sandy & Lee Marks

A DONATION

Donald Hacker

SPECIAL PROJECT**IN MEMORY OF**

DIEGO MESA
Miriam & John Cohen, Sharyl & Alan Ackerman

**RABBI DANIEL SYME
DISCRETIONARY FUND****IN MEMORY OF**

MANUEL ROTENBERG
Janice Vanstrien

IN HONOR OF

RABBI SYME'S KINDNESS
Nancy & Dennis Gershenson

TBE SENIOR STAFF MITZVAH FUND**IN MEMORY OF**

ESTHER RITS
YANKEL VOSPE
Bella & Lev Shleypak

IN HONOR OF

ONGOING LOVE AND FRIENDSHIP OF
MARGI & DON EPSTEIN
Anna Marie Kish

MARCH BIRTHDAYS

MARCH 1

Gabrielle Blau
Marjorie Federman
Sandra Hermanoff
Jerome Moss
Jo-Anne Nosan
Marsha Rofel
Adam Rosenberg
Sarah Shapiro
Sheldon Siegel
Franklin Stewart
Steven Stone
Emunah Wedes

MARCH 2

Nancy Baron
Nancy Brudney
David Colman
Michele Davis
Dorothy Decker
William Haughey
Kenneth Posner
Jordan Rosenberg
Harlan Simmons

MARCH 3

Makenzie Bielfield
Merrilee Broder
Norton Delidow
Bridget Kravchenko
Ryan Lewis
Sheryl Stoddard
Brenna Turner

MARCH 4

Emily Cetner
Connie Colman
Milton Conway
Martin Darvick

Jonathan Haber
Zvi Rosenzweig
Jean Simon

MARCH 5

Lyndsay Ball
Jennifer Fantich
Deborah Marwil
Norma Pont
Megan Specktor
Mark Tennenhouse

MARCH 6

Brielle Bassirpour
Susan Kaplan
Sylvia Nelson
Gregory Schwartz

MARCH 7

William Floyd
Aric Klar
Marta Lazar
Michele Maloff
Jason Raznick
Wyatt Schiller

MARCH 8

Gayle Camden
Dennis Freeman
Madeleine Gerson
Ira Margolis
Roberta Weber

MARCH 9

Jackson Blau
Tessa Grant
Myron LaBan
Michael Zonder

MARCH 10

Hannah Cardew
Ethan Cliff
Harriett Hollander
Adam Kessler
Ezra Stav

MARCH 11

David Blau
Lana Lembersky
Susan Saraquse
Michelle Scavone
Harmon Tron
Elizabeth Wojtowycz

MARCH 12

Lorie Kessler
Nathan Stotland

MARCH 13

Howard Baron, Jr.
Alison Budisak
Stuart Israel
Estelle Kwartowitz
Arielle Lipman
Rachel Rapp

MARCH 14

Allen Gantman
Ryan Gertner
Gaal Karp
Katie Leibhan
Deborah Morosohk
Nancy Powell

MARCH 15

Margaret Gantz
Marjorie Sandy
Victoria Sloan

MARCH 16

Mark Birnhart
Ari Chekan
Elaine Greenspan
Tonja Lawrence
Harold Margolis
Boris Perekhodnik
Sarah Rappaport
Bella Shleypak
Sherry Singer
Jennifer Werbling
Hudson Wurn
Carly Yashinsky

MARCH 17

Harriet Cooper
Cantor Rachel
Kalmowitz
Robert Lisak
Sharon Obeler
Alexandra Schwartz

MARCH 18

Elizabeth Kaner
John Kessler
Mitchell Greenberger
Joshua Lipson
Sarah Myers

MARCH 19

Norman Ash
Joshua Berg
Hudson Craig
Marlene Lipman
Daniel Mesa
Mark Rubinstein
Elyse Sutherland

MARCH 20

Cheryl Carpenter
Samuel Kessler
Rachel London
David Miller
Anthony Shields
Justin Wedes

MARCH 21

Karen Hull
Jackson Harris
Michael Jacoby
Jeffrey Jenks
Allan Lasser
Taevon Lawrence
Staci Lichterman
Jordan Marcus
Darren Rosenberg
Diane Weisberg

MARCH 22

Jonathan Borenstein
Cheryl Kerwin
Brighton Most
Adam Robin
Joseph Rubin
Emma Sable
Mark Schwartz
Scott Sircus
Susan Turner

MARCH 23

Arnold Joseff
Micah Israel
Emery Kasle
Brian Kern
Mildred Minkow
Edward Weberman
Alana Wildern

MARCH 24

Evan Cardew
Susan Goldsmith
Ezra Klar
Elan Tamaroff
Jennifer Weckstein

MARCH 25

Charlotte Bortman
Laila Feldman
Stuart Michaelson
Sandra Millman
Jacqueline Rothstein
Leah Salzenstein
Trevor Schwartz
Eden Zadoff
Sasha Zadoff

MARCH 26

Jaime Ettinger
David Miller
Fredrick Simon
Marla Singer
M. Madeline Weiner

MARCH 27

Denise Brown
Amy Farbman
Mason Fillmore
Nolan Werner
Steven Wolf

MARCH 28

Harvey Freeman
Sheldon Plotnik
Mark Shain
Brandon Webb

MARCH 29

Ellory Becker
Mark Canvasser
Hudson Issner
Myrle Leland
Simon Rozenzweig
Steven Scharg

MARCH 30

Alicia Chandler
James Deutchman
Robert Dresner
Olive Kelman
Logan Most
Kelly Paulisin-Smith
Noah Sklar
June Watnick

MARCH 31

Beth Congdon
Charles Jacobowitz
Michael Kent
Michelle Lane
John Lawson
Abraham Slatkin

MARCH ANNIVERSARIES

MARCH 2

Phyllis & Allen Gantman

MARCH 3

Leah & Harmon Tron

MARCH 6

Jenny & Gregory DeGorsky
Dana Kreis Glencer & Derrick Glencer

MARCH 7

Susan & Daniel Dickey

MARCH 10

DD & Stephen Fisher
Mania & Mark Glazer

MARCH 11

Sara & Andrew Craig
Shira & Bill Good
Brenda & Sanford Passer

MARCH 16

Anna & Robert Greenstone

MARCH 17

Laura & Lawrence Lester
Patricia & Josh Luber

MARCH 20

Rita & Semyon Klein
Susie & Adam Rosenberg

MARCH 21

Helen & Howard Barron

MARCH 22

Stacy & Ronald Klein
Helaine & Arthur Steuer

MARCH 23

Leslie & David Doran

MARCH 24

Wendy & Henry Abrams

MARCH 25

Mary Jo & Marc Israel

MARCH 26

Cathy & James Deutchman
Jacqueline & Earl Remer

MARCH 27

Jessica & Jeremy Brandt
Jane & Richard Schwartz

MARCH 28

Lyndsay & Jason Ball
Karen & Alan Lowen
Shelley & Jeffrey Roberts

MARCH 29

Nancy & Richard Blieden
Sonja & Keith Pomeroy

MARCH 30

Louise & E. Todd Sable

MARCH 31

Heidi & Jay Kreindler
Mary & Richard Senter

SUNDAY, MARCH 1 - SATURDAY, MARCH 7, 2020

| | | | | | | |
|--|--|--|---|---|---|--|
| * LAVERNE ALLEN SADIE G. BACH * SYLVIA BAER SYLVIA BAKER ROSE BANKLER * LOUIS JONAS BEARMAN MARILYN BEDNARSH JOHN BEHRENDT JOSEPH M. BIEDERMAN * SADIE J. BING FREDERICK A. BIRD BERNICE BIRNKRAUT * GOLDIE BLANCH | BRIAN BLANK EDWARD M. BLAU * JEANNETTE SARAH BRADFIELD * MARVIN BRESKIN * JOSEPH BROWN * MILA CHAJES JANICE COHEN * AARON DEROY BERNARD DEUTCHMAN * FRANCES DREYFUSS * WILLIAM ROBERT ELSON EDGAR FENTON | * RICKY FINKELSTEIN STEVEN FISH NANCY MAY GAGNER * SAMUEL GERSON * MAX GLAZER * ROSE GOODFRIEND * MAURY A. GORDON EDITH GOTTLIEB * MORRIS GOYER KAREN GRAFF JACK GUZ IDA HEPNER * ROBERT P. HIRSCH | * IRMA SLOMAN HIRSCHMAN * LOUIS HOFFMAN WILLIAM HOLSKIN * HELEN NELKEN JALAN * DOROTHY KAMINS * REBECCA D. KATZ BETTY KATZMAN HERBERT KESSLER EVA KLINE DR. RICHARD KOMMEL ROSE LAPIDES BELLE LAZAR | JOAN LEFKOWITZ MIRIAM LEWIS LIEBERMAN BRUCE MACWILLIAMS * JOHN Z. MERDLER EDNA MINKIN ERZSEBET BACS MOLNAR * MINNIE L. NEWMAN * SUSYE F. OBERFELDER * JACOB PEARL * ANN B. POLOZKER MIRAH REDFIELD * MAX REICH BEN RUBENS | ALBERT RUBINSTEIN * MOLLY SALZENSTEIN WESTON * MARCIA SCHILLER * ROSALIND SCHUBOT ISSAY SHELPAK * RICHARD H. SIMON BESSIE SMITH BERTHA STEIN JESSIE KAUFMAN STERN * SYLVIA GORDON STONE * LEONARD STRICHARTZ | DAVETTA JONES THOMPSON ANTHONY TROGAN NORMAN WACHLER WALTER WALLS * ABRAHAM WEINER * EMORY WEISS * HERMINA WEISS ROBERT WERNEY * HENRY WESCHLER DONALD WURM * ROSALYN BANOV WYMAN JACQUELINE ZIMMERMAN |
|--|--|--|---|---|---|--|

SUNDAY, MARCH 8 - SATURDAY, MARCH 14, 2020

| | | | | | | |
|---|--|---|--|---|---|---|
| * FERDINAND ALEXANDER * JOHN ALEXANDER * IDA ALPERT * SAMUEL W. ALPERT * MARIE BALABAN ANNETTE BERRY PHYLLIS BLAU IRWIN HARRY BLOCH DOROTHEA BOURKE DAVID BRUDNEY * JULIUS CASSEL | * LOUIS COHN * EDNA COLMAN MARTIN COOPERMAN ELI DARVICK WILLIAM DAVIDSON * HERBERT DREYFUSS * CHARLES DUNITZ HENRY ENTIN * LILLIAN EPSTEIN DENNIS FORTIER BENJAMIN GARLOCK | * HERMAN GOLANTY ROSE GOLDSTEIN * FRED E. GREENSPAN ALICE KOBACKER HARRIS * WILLIAM HAUSER * SCHIFRA LEIDER HENRY BERTHOLD HOMBURGER DAVID HULL * NETTIE BYRON JACOB ELDEN B. JAY * FAYE W. JOSEPHSON | ANNETTE KAHN ROSALIE KANAREK EMANUEL KOENIGSBERG FRANCES KOPPELMAN SOL WOLF LANDAU HAROLD LANDIS PHILLIP LAZAR RUBEN LEIPZIG * MOLLIE ZEITMAN LEVE * LOUIS LOWY * SYLVAN A. MESHORER | RICHARD MILLER * ELIZABETH ANN PAYSON STEVEN RADOM MORTON JACK REMER REBECCA ROBINSON SYLVIA ROGERS * OSCAR R. ROSEN * JULIUS ROTENBERG WENDY SABLE JEANETTE LILLIAN SARAQUSE | JEAN SHAPERO DR. WILLIAM SILLS * GERALD R. STRAUSS * RABBI M. ROBERT SYME * LT. DONALD WITTMAN TANN A. RICHARD TISCHLER * MARTIN M. WEINER HARRIET WEINGUST * SAMUEL WEXLER DR. JAN WINKELMAN | AUGUSTA YOUNG MIRIAM ZACKS FAY ZAMET FLORA ZIMMERMAN * LEO J. ZUCKERMAN |
|---|--|---|--|---|---|---|

SUNDAY, MARCH 15 - SATURDAY, MARCH 21, 2020

| | | | | | | |
|--|---|---|---|--|---|--|
| * VIRGINIA E. ADAMS CLARA AULTCHOULER * ARCHIE BARNETT ROSE BEIGLER MILTON BERMAN * FRED H. BEST * DR. I. IRVING BITTKER RACHEL BLAIR * LILLIAN BOBMAN * LILLIAN BRODER * ANNE PEARLMAN BRONSON MARY PEARL BURDICK * FLORENCE GITLIN CAMDEN JOSEPH CAMDEN | * ROSE LANDAU COHEN PRICILLA COOPER DICKMAN * IDA DRESCHER PATRICIA LYNN DUBE LULO FAUMAN * DONALD FISHER * MARGARET FRANKLIN FLEISCHAKER * LOUIS H. FREED GEORGE ABRAHAM FRIED DR. DONALD GALE * JOSEPH B. GAYLORD * CECILIA GOLDMAN DAVID GOLDMAN * WILLIAM GOODFRIEND | MORREY HARRIS ROSE HEARSH * ERNA HERZ DAVID HOWARD * ELSIE D. JACOBSON MAX JASSENOFF * ESTHER KATZ * DR. JOSEPH HENRY KERZMAN * MILLIE KIRSCHBAUM HELEN MAY KOPLOY * EUGENE H. KOPPLE SADIE M. KRANDALL * DR. IRVIN J. KURTZ LARRY KUSHKIN * BESSIE POPKIN | LANDSBERG * JACK O. LEFTON * SIDNEY LENCHNER WALTER LEUBUSCHER MAYME LEVINE ANNE RUTH LINSKY MILTON H. LONDON * BENARD L. MAAS JR. * NANCY JEAN MEYER HENRY MORGENSTERN IRVING NEWMAN CLARA KLEIN NOLAN HELEN OZER ELIZABETH PENCHASSOFF * FRED W. PORTNOY | ELIZABETH RAZDOLSKY * GOLDIE LEIDER REICHSTEIN * DOROTHY REINHEIMER * MITCHELL B. ROBINSON ROBERT ROSEN * MINNIE H. ROSENBERG MASAL "TONI" ROSENFELD ROY ROTTER ARLINE VIVIAN RUBIN * ISAAC RUBIN * J. ACOB SAZZMAN * HAROLD GILBERT SCHREIBER * BETTY H. SCHUBOT | * BEVERLY JANE BLAU SEGAL SAM SEGAL MORTON SHAPIRO * ELRICK CHARLES SHUMER * LENA RUTH SIEGEL SIDNEY SILVER MARY SILVERMAN R. MARGARET "PEGGY" SIMON RICHARD SIMON * MAX SMITT * AARON SNYDER * MARY SOLOMON * MAX SOLOMON | * ROSE SPARR WILLIAM H. STEINHARDT ADELINE STEINMAN * MAE BENISON STEINMAN ROBERT STOLLER SUSAN SNYDER SWIFT JOYCE ANNETTE TATCHIO NATALIE VICTOR * MILDRED WEISS * EMANUEL I. WINKELMAN * FRANK J. WINTON GOLDIE WISEMAN HAROLD WOLFE |
|--|---|---|---|--|---|--|

SUNDAY, MARCH 22 - SATURDAY, MARCH 28, 2020

| | | | | | | |
|--|--|---|--|---|---|--|
| * A. HARRY ADLER * MILTON M. ALEXANDER * LOUIS ARNKOFF ESAR BACHMAN SYLVIA BARR * ELSA KOPPLE BERGER * JOSEPH BERMAN * MARK H. BIRNKRAUT * ALBERT BLATNIKOFF JUDITH CHASE * ABRAHAM S. COHEN | DR. LEWIS COLE LAWRENCE COVILLE * EDWARD J. DIZIK DR. MYRON DORFMAN EMILY EDWARDS * MOE EHRlich * CAROL ELIZABETH ELLMANN SELMA FISHER * DR. JOSEPH L. FORBES ALEX FRANK | SOPHIE GOLDEN * NOLA W. GOLDMAN * HAZEL DEYOUNG GRAFF FANNIE MARCUS GUTTENBERG HON. CANTOR EMERITUS JOHN HAROLD REDFIELD MERLE HARRIS * WILLIAM M. HARRIS * ARTHUR HIRSCH * IRVING L. HIRSCHMAN | * LENA HOFFMAN THERESA HOLLANDER HERBERT ISNER SIDNEY ISRAEL MILDRED KABAKOV * NELLIE SANDORF KAHN * SAMUEL BARRETT KAHN * LLOYD KAPLAN MAXWELL R. KLUGERMAN * JACOB KOSITCHEK | ABIGAIL ROVNER KOTT * FLORA KERNER KOVAN MARIE LANNON ELAINE LESSER * ABRAHAM "AL" LEVITT EVELYN LOWEN SEYMOUR LOWEN * FLORENCE METZ * H. ROY MILLER MOLLY MILLER * LAWRENCE NEDELMAN | * MAX NEUMAN * HYMAN PILCHIK RACHEL PLUDWINSKI JOHN HAROLD REDFIELD MILTON RESNICK * ANNA RESSLER * ANNE ROBERTS * HERBERT D. ROBINSON * SOL SAPPERSTEIN * BUD SCHILLER | SANDRA JANE SCHWARTZ * BONNIE LYNN SHERR * MARY SIDERMAN * IDA SILVERMAN IRVING SIPORIN RENEE STONE * DOROTHY BARNETT THAL * JACK J. WAINGER SELMA WINSTON |
|--|--|---|--|---|---|--|

SUNDAY, MARCH 29 - SATURDAY, APRIL 4, 2020

| | | | | | | |
|---|---|---|--|--|---|--|
| * BELLE MEISNER ALEXANDER * ANNE S. ALVIN MARILYN BARNETT * ETHEL BEARMAN ROBERT STANLEY BENSON ARNOLD BERG FRANK BERMAN CELIA BESBRIS GERTRUDE BURSTON DR. GEORGE CHARNAS | FELICE CHESNO ANNE CHANSON COHEN REBA COOPER * PAUL CORBY ROSE CROOGLOFF EUGENE M. CURTIS SYLVIA CYRIL JO ANN ENGELSON WILLIAM ENGELSON * LOUIS M. ESTON * EARL I. FENWICK JACOB FREEMAN | * MARVIN A. FRENKEL ROSALIE FRIEDMAN * MAX GERSTMAN * JOSEPH GESEUS * ANNA L. GOLDBERG * MORTON GOTTESMAN ISAAK GRUSKIN * DR. PEARL HAUSER DAVID HAZAN DAVID HUBERT * REVA JACOB * LOIS JACOBOWITZ | DOROTHY KATZ JULIUS KATZ TOBY KAUFMAN HAROLD J. KUSHNER DR. ISAAC KUSHNER JOSEPH LAPIDES MORRIS LAZAR * HELENE LENZNER RUTH LEVINSON * DORA GERSON LEVY STANLEY MARTIN LEWIS EDWIN LIEBERFARB | * JACK MACWILLIAMS ARTHUR MARCUS BERNARD MELLITZ JONATHAN MICHELSON * LAWRENCE J. MICHELSON EARLE MOSTYN * ROBERT B. NOVITZ PAUL PACKARD SYLVIA POLLACK LOUIS G. REDSTONE SYLVIA ROBINS | ALTON ROHAN * RAE RUBIN * SYLVIA SAMUELS MILDRED A. SAND ARTHUR SCHOTT HENRY SCHWARTZ * JOSEPH SIEGEL * BEATRICE STRICHARTZ * EMANUEL SWEETWINE BENJAMIN TAUBER * BENJAMIN WAGENHEIM * EVELYNE E. WEINER | * JOSEPH WEINER * JULIUS YOUNG FAY ZISHOLZ * JULIE ZOHOTT |
|---|---|---|--|--|---|--|

MAX LAPIDES

Husband of Sissi Lapides. Mother of Leah and Laura (Denise). Grandfather of Jessica (Seth). Great-grandfather of Thomas. Cousin of Rabbi Mark, Rachel Ann, Mori and Abraham Miller.

ANNA ROMANENKO

Mother of Lana (Michael) Lembersky. Grandmother of Margarita Lembersky and Natalya (Oleg) Rolbin. Great-grandmother of Maxim Wilkins and Kate Rolbin.

MARY JANE MARX

Sister of John (Judy) Marx. Aunt of Jennifer (Jeff) Hollander.

ROBERT MOERS

Husband of Sandra Moers. Father of Carolyn (Douglas Parker) Rands, Michael (Hillary) Moers, Dennis Moers, Debra Moers, Stacy (Joe Lasprogata) Moers and Andrew (Yelda) Moers. Grandfather of Gregory (Floencia) Moers, Alex Moers, Chloe Moers, Ben Moers and Noah Moers. Brother-in-law of Gloria Leader.

DOUGLAS ALAN NYQUIST

Husband of Jo Ann Allen Nyquist. Father of Gurston Gordon (Shoshana) Nyquist, Jonathan Allen (Lindsay) Nyquist and Rebecca Lee Anne (Warren) Baelen. Grandfather of Lily, Noah, Layah, Chloe, Ari, and Emma Nyquist. Brother of Bonnie (Gary) Bell and Susan Nyquist. Brother-in-law of Cindy Nyquist, Judy (Jerry) Kaufman, Karyn Allen (Peter) van den Heuvel, Rose Ramcharan, David (Rita) Allen and Thomas Keenan.

EDWARD M. MILLER

Father of David (Mary Beth) Miller, Claudia (William) Kretschmar, Joe Aller and Tracy Aller. Grandfather of Brendan (Corey) Kretschmar, Russell Kretschmar, Rachel and Lisa Miller, Carly Aller and Hannah and Sammy Cohen. Great-grandfather of William Cole Kretschmar.

EDITH SIMMONS

Wife of Dr. Milton Simmons. Mother of Harlan (Bonni) Simmons and Melodie (Dr. Alan) Solway. Grandmother of Andrew Solway,

Matthew Solway, Ashley Simmons, Ryan Simmons and Eric Solway.

ARTHUR SOBIN

Dear friend of Dot (Bob) Vernan.

NANCY MYERS

Wife of Martin "Marty" Myers. Mother of Carl Myers (Wendy Messenger) and Bruce (Lisa) Myers. Mother-in-law of Denise Myers Brown (Kenneth Brown). Grandmother of Sammy Myers, Jacob Myers, Justin (Hien) Myers, Jonathan Myers and Meegan Rehak. Sister-in-law of Fayne Petok. Sister of Marcia Tanzman. Aunt of Jay Tanzman (Anna Krylov) and Carol (Michael) Kuppe and their children.

BLANCHE BORENSTEIN

Mother of Jonathan (Karen) Borenstein, Laura (Larry) Lester and Ellen "Rivkah" (Mayer) Goldwasser. Grandmother of Rachel, Jane, Matthew, Scott and Stephanie.

TRIBUTE FORM

Minimum contribution: \$18 per tribute. CONTRIBUTIONS ARE TAX DEDUCTIBLE

4 WAYS TO MAKE TRIBUTES

ONLINE: www.tbeonline.org/tributes

PHONE: Contact Laura Lucassian at 248.851.1100

EMAIL: llucassian@tbeonline.org

MAIL: Temple Beth El, 7400 Telegraph Road, Bloomfield Hills, MI 48301

• Credit card transactions will incur a mandatory non-refundable 3% convenience fee.

• No convenience fee for debit card transactions.

PLEASE PLACE MY CONTRIBUTION IN THE FOLLOWING FUND:

In Honor of: -----

In Memory of: -----

Enclosed please find \$ ----- or charge my ☐ credit ☐ debit card

exp. date ----- sec. code -----

Name on card -----

SEND ACKNOWLEDGMENT TO:

Name: -----

Address: -----

City/State/Zip: -----

DONOR'S NAME: -----

Address: -----

City/State/Zip: -----

Phone: -----

Member ----- Non-member -----

HOW DO YOU WISH THIS TRIBUTE TO BE SIGNED? -----

01 SUN 8:30 AM B'nai Mitzvah Club
9:00 AM TBE Sunday Morning Breakfast
9:30 AM MASA
Brotherhood Board Meeting
Sunday Minyan
10:00 AM Bubbie Zaydie Temple Tots
Sisterhood Board Meeting
10:30 AM *Masa* Teens -7th and 8th
Adult B'nai Mitzvah
Masoret
11:30 AM *Masa* Teens
NOON BETY35 Program

02 MON 6:00 PM MASA Teens

03 TUE 7:00 PM TBE Choir Rehearsal

04 WED 9:30 AM Lea Beurer Classes
4:30 PM B'nai Mitzvah Club
6:30 PM Intro to Judaism course

05 THU 6:00 PM ECC Shopping Night Out at
Evereve in Birmingham

06 FRI 9:15 AM Temple Tots
5:30 PM Kid-ish Club Purim Blowout
7:00 PM Music Shabbat Service

07 SAT 9:15 AM TBE Torah Study
10:30 AM Shabbat Service
w/ Mattan Torah
6:00 PM Choir Call
7:00 PM Hamilton - Adult Purim Party

08 SUN 8:30 AM B'nai Mitzvah Club
9:00 AM TBE Sunday Morning Breakfast
9:30 AM MASA
Sunday Minyan
10:15 AM Youth Choir rehearsal
10:30 AM *Masa* Teens-7 and 8
Adult B'nai Mitzvah
11:15 AM Megillah Reading/Hamilton
Purim Spiel w/Youth Choir
NOON Purim Carnival

09 MON 9:00 AM ECC Purim Parade
6:00 PM *Masa* Teens

10 TUE **PURIM**
4:30 PM Executive Committee Meeting

11 WED 9:30 AM Lea Beurer Classes
4:30 PM B'nai Mitzvah Club
6:30 PM ECC Policy Committee

13 FRI 9:15 AM Temple Tots
7:00 PM Shabbat Service

14 SAT 9:15 AM TBE Torah Study
10:30 AM Shabbat Service
B/M Sophie Cohen

15 SUN 8:30 AM B'nai Mitzvah Club
9:00 AM TBE Sunday Morning Breakfast
9:30 AM MASA
Brotherhood Speaker
Sunday Minyan
10:30 AM *Masa* Teens-7 and 8
Adult B'nai Mitzvah
Masa Teens
11:30 AM Youth Choir Rehearsal
NOON Sisterhood's Ruth Bader
2:00 PM Ginsburg Bday Celebration

16 MON 7:30 PM Glazer Institute

18 WED 9:30 AM Lea Beurer Classes
4:30 PM B'nai Mitzvah Club
6:30 PM Intro to Judaism course
7:00 PM Chai Mitzvah

19 THU 11:00 AM Sisterhood Game Day
NOON Beth Elders Luncheon with
Musician Avy Schreiber
7:15 PM Board of Trustees Meeting

20 FRI 9:15 AM Temple Tots
7:00 PM Shabbat in the Round

21 SAT 9:15 AM TBE Torah Study
10:30 AM Shabbat Service
B/M Lindsay Levin

22 SUN 8:30 AM B'nai Mitzvah Club
9:00 AM TBE Sunday Morning Breakfast
9:30 AM MASA
Sunday Minyan
10:30 AM *Masa* Teens-7 and 8
Adult B'nai Mitzvah
Masoret
11:30 AM *Masa* Teens

23 MON 6:00 PM *Masa* Teens

24 TUE 7:00 PM TBE Choir Rehearsal
Education Committee Meeting

25 WED 9:30 AM Lea Beurer Classes
4:30 PM B'nai Mitzvah Club
5:00 PM Knitting, Crafts and Laughs

26 THU 7:00 PM Bereavement Support Group

27 FRI 9:15 AM Temple Tots
5:30 PM 2/3 Grade Family Program
7:00 PM Shabbat Service

28 SAT 9:15 AM TBE Torah Study
10:30 AM Shabbat morning services
B/M Frankie Coden
2:30 PM BETY Michigan Peddler Tour
7:00 PM Schmooze @ House of Pure Vin

29 SUN 8:30 AM B'nai Mitzvah Club
9:00 AM TBE Sunday Morning Breakfast
9:30 AM MASA
Sunday Minyan
10:30 AM *Masa* Teens-7 and 8
Adult B'nai Mitzvah
Masa Teens
11:30 AM Youth Choir Rehearsal
NOON Women's Seder
5:00 PM

30 MON 6:00 PM *Masa* Teens

31 TUE 6:30 PM Library Cocktail Program
7:00 PM TBE Choir Rehearsal



2020

| S | M | T | W | T | F | S |
|----|----|----|----|----|----|----|
| 1 | 2 | 3 | 4 | 5 | 6 | 7 |
| 8 | 9 | 10 | 11 | 12 | 13 | 14 |
| 15 | 16 | 17 | 18 | 19 | 20 | 21 |
| 22 | 23 | 24 | 25 | 26 | 27 | 28 |
| 29 | 30 | 31 | | | | |

YIZKOR SERVICE & PLAQUE DEDICATION



**WEDNESDAY, APRIL 15
10:30 AM**

Join us in worship as we remember our departed.

PLAQUE DEDICATIONS:

**CHARLES M. BROH
DR. GARY N. GREENBERG
NURIT ANANI SALLEN
EDITH RAE SIMMONS**

**The perfect ending
to any Shabbat service ...
enjoying food with
one another.**

Please consider supporting this festive gathering with a donation to the Oneg/Kiddush Fund.

To sponsor an Oneg or Kiddush, contact Laura Lucassian at 248.851.1100 or llucassian@tbeonline.org.



SATURDAY, MARCH 14, 2020 BAT MITZVAH OF SOPHIE PAIGE COHEN

Joining in Sophie's Mitzvah are her parents Josh Cohen and Carrie & Steven Stillwater, brother Isaac Cohen, grandparents Steve Brown, Connie & Barry Silverman, Michael Cohen, Beverly & Marc Jonas, Randi Brown & Larry Stillwater. Also celebrating this joyous occasion are Sophie's great-grandparents, Elaine Kohner and Bernie Jonas. Sophie is the loving grandchild of the late Janice Cohen. Sophie is a student at Warner Middle School in Farmington Hills. As part of her Mitzvah Project Sophie has enjoyed volunteering at Fleishman as well as various soup kitchens and Meals on Wheels.



SATURDAY, MARCH 21, 2020 BAT MITZVAH OF LINDSAY BROOKE LEVIN

Lindsay is a 7th grader at Derby Middle School. For her Mitzvah Project Lindsay enjoys participating with the PET-A-PET PROGRAM, where she takes her dog Snoopy to visit patients at St. Joe's Hospital. Lindsay is the daughter of Emily and Darrin Levin, the sister of Dylan and Spencer, the granddaughter of Adrienne and Paul Shwedel, Carole Levin and the late Larry Levin.



SATURDAY, MARCH 28, 2020 BAT MITZVAH OF FRANKIE CODEN

Frankie is a 7th grader at Berkshire Middle School where she participates in choir, photography, stagecraft and the baking club. When she is not studying, Frankie can also be found enjoying Dim Sum, "Billy Madison", Sebastian Maniscalco, Tik Tok, Board Games and bickering with her sister. Frankie performed her Mitzvah Project for Together We Rise, improving the lives of children in foster care. She is the daughter of Robyn & Mark Coden and the sister of Jaye. Proud Grandparents are Judy Grossman, Cary Storchan and Carol Sue & Stephen Coden. Frankie is also the granddaughter of the late James Grossman.

SHABBAT SERVICES

FRIDAY, MARCH 6

5:30 PM Kid-ish Club Purim Blowout
7:00 PM Music Shabbat

SATURDAY, MARCH 7

9:15 AM Torah Study
10:30 AM Shabbat Services w/Mattan Torah
Torah Reader: Ann Flood
7:00 PM Hamilton – Adult Purim Party

FRIDAY, MARCH 13

7:00 PM Shabbat Service

SATURDAY, MARCH 14

9:15 AM Torah Study
10:30 AM Shabbat Service
B/M Sophie Cohen

FRIDAY, MARCH 20

7:00 PM Shabbat in the Round

SATURDAY, MARCH 21

9:15 AM Torah Study
10:30 AM Shabbat Service
B/M Lindsay Levin

FRIDAY, MARCH 27

5:30 PM 2/3 Grade Family Program
7:00 PM Shabbat Service

SATURDAY, MARCH 28

9:15 AM Torah Study
10:30 AM Shabbat Service
B/M Frankie Coden

CLERGY

Mark Miller, Senior Rabbi
Rachel Gottlieb Kalmowitz, Cantor
Megan Brudney, Associate Rabbi
Daniel B. Syme, Rabbi Emeritus

STAFF

Daniel Mesa, Executive Director
Deborah Morosohk, RJE, Director of Education
Claire Danaher, Chief Financial Officer
Susie Weiner, Director of Early Childhood Center
Danielle Gordon, Program Director
Lindsey Fox-Wagner, Communications Director
Rachel Rudman, Director of Member Engagement
Scott Lowen, Director of Youth Engagement
Laura Williams, Director of Cultural Resources
Alan Lowen, B'nai Mitzvah Coordinator
Jim Gabriel, Accompanist
Damon Kaigler, Building Director
Joe Winter, Cemetery Superintendent
Morris Collins, Director of Security
Thomas Jablonski, Executive Director Emeritus

EXECUTIVE COMMITTEE

Liz Modell, President
Rochelle Nelson, VP/President-Elect
Lorie Kessler, Vice President
Warren Rose, Vice President
Alex Stotland, Vice President
James Rice, Treasurer
Steven Tarnowsky, Secretary
Maxine Lievois, Member-At-Large
E. Todd Sable, Member-At-Large
Jordon Wertheimer, Immediate Past President

AFFILIATES

Elaine Brockman, Beth Elders
Mark Schonberger, Brotherhood
Karen Lowen, Sisterhood
Annie Mauch and Erin Lewis, The Kid-ish Club
Sara Taub, Beth El Temple Youth (BETY)
Natalie Shirley, K-5 K'hilah Club



TEMPLE
BETH EL

7400 TELEGRAPH ROAD
BLOOMFIELD HILLS, MI 48301
WWW.TBEONLINE.ORG

Non-Profit Org.
U.S. Postage
PAID
Southfield, MI
Permit No. 498

SAVE THE DATES



JUNE • 13 • 7PM

FOOD TRUCKS – ROCKIN' LIVE MUSIC
DRINKS & COCKTAILS – HUGE RAFFLE
AND MUCH MORE!

Shabbat in
CHARLEVOIX

AUGUST • 14 - 15 • 7PM

JOIN US FOR A FAMILY-FRIENDLY WEEKEND
IN CHARLEVOIX FOR A BEAUTIFUL
SHABBAT SERVICE & HAVDALAH AT THE
CHARLEVOIX BAND SHELL AMPHITHEATRE!

OPEN TO THE COMMUNITY
FOR MORE INFORMATION, CONTACT LINDSEY AT LFOXWAGNER@TBEONLINE.ORG OR 248.851.1100.