



tbe

BULLETIN

MARCH 2019
ADAR 5779
VOL. 33 ISSUE 6

ARTIST: Yitzchok Mouly

pg 12 | GLAZER INSTITUTE
"THE POWER OF FAITH IN AMERICA"
pg 16 | PURIM CELEBRATIONS



**AIPAC POLICY 2019
CONFERENCE**
MARCH 24-26
WASHINGTON, D.C.



**Join Rabbi
Mark Miller,
Cantor Rachel
Kalmowitz and
fellow TBE
members in our
nation's capital for
the most important
days impacting the
U.S.- Israel
relationship.**

For more information about Temple Beth El's delegation, or to register for the conference, please contact Jennifer in the Rabbis' Study at jritchie@tbeonline.org or 248.851.1100.

CLERGY COLUMN

CANTOR RACHEL GOTTLIEB KALMOWITZ



Building Trust

The last weekend in January, during the polar vortex, I was at the Executive Board meeting of the American Conference of Cantors in Chicago. (Couldn't it have been in Florida??) To me, one of the most interesting conversations we had during that meeting was with a current cantorial student from the Debbie Friedman School of Sacred Music at HUC-JIR, the Reform movement's seminary. She was talking about the supervisory relationships that she and the other cantorial students had with the rabbis in their student pulpits, and how they frequently felt disempowered to make musical decisions in that setting. Those of us who are in the field spoke with this student about the trust and mutual respect that can and must exist between clergy partners, even if one has a supervisory role over the other. We spoke as well about the trust that can be built between a cantor and his or her congregation, which makes introducing new music an easier task. The Hebrew word for cantor is *chazzan*, which means vision. If the cantor has earned their trust, congregants are more likely to be open to the cantor's musical vision for the congregation.



*The Hebrew
word for cantor
is chazzan, which
means vision.*

This month, March 15 to be exact, is my 15th anniversary at Temple Beth El. In that time, I feel lucky to have built a trusting and respectful relationship with many clergy partners. Our current team is particularly strong, with each of us bringing something special to the table, and a remarkable sense of

cohesion. In addition, I have tried over the years to be worthy of the trust of each of you, my congregants. I want for you to know that I will be here for you in your hours of need and to share in your joys, that the artists I bring to temple will be energizing and talented, that the music that we share each Shabbat and holiday will engage and inspire, and that the relationships that we create will be meaningful and long-lasting. I will make mistakes, and I may disappoint you, but because we have a relationship built on time and trust, we will continue to grow and support each other in that growth. With my clergy partners, our Strategic Engagement Team, and our remarkable lay leadership, I have tried to help shape a vision for this congregation, with engaging music, dynamic programming, and sacred relationships. Our spirit is indeed growing. May we continue to go from strength to strength.

Cantor **RACHEL** GOTTLIEB KALMOWITZ
rgk@tbeonline.org

CONTENTS



MARCH 2019

THE HEART OF TBE

Temple Beth El has long strived to be a place where Judaism plays a joyful and meaningful role in our lives. Whether you are new to Temple or your family has been here for generations, we are always looking for ways to help you build strong relationships that will be at the center of moments filled with prayer, learning, growth, and support.

This year, our Temple Board is taking a special interest in exploring what makes TBE, according to some studies, a "visionary" congregation rather than simply a "functional" one. What defines our sacred purpose? What are our strengths? What are some of the opportunities for participation, and benefits of belonging to this community?

Our vision for fulfilling TBE's purpose goes far beyond quality education for all ages and a wide range of innovative programs. You can find a sense of community vitality in many ways, including:

- Our welcoming and inclusive nature;
- Extending care to people in need;
- Developing future leaders;
- Building bridges and outreach beyond Temple; and
- Providing a strong sense of belonging for all.

Each month in our Bulletin, in this column, we will highlight an element of Temple that provides us with opportunities to take advantage of all we have to offer here. TBE is the magnificent spiritual home we all share, and we are excited to continue talking about the small moments and grand rituals that make us so proud of this Beth El, this House of God.

4-5 **ARCHIVES**

6 **WE ARE PROUD**

8-15 **UPCOMING PROGRAMS & EVENTS**

14 **PASSOVER 2ND NIGHT SEDER**

16-17 **PURIM CELEBRATION**

18-21 **AROUND TEMPLE**

22-25 **LIFE CYCLES**

27 **SHABBAT SCHEDULE**

CUPS OF HOPE

Sponsored by 

Women who find themselves homeless shouldn't have to worry about finding bras!

Now through March 16 we will be collecting gently used clean or NEW bras for women of Hope Hospitality and Warming Center.

Donation box will be located in the main office at Temple.

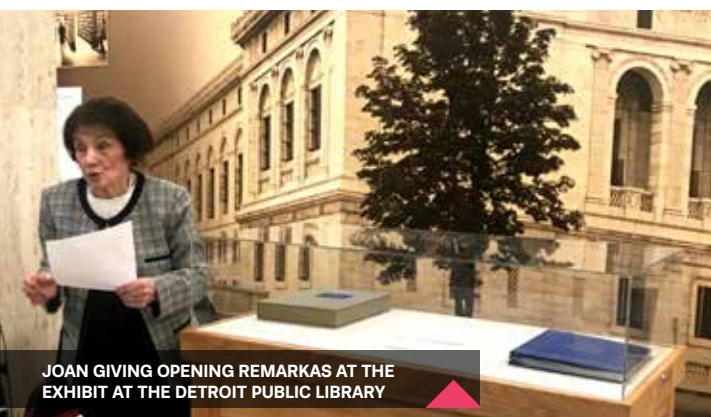
HOPE's adult shelter provides dinner, triage healthcare, showers, access to resources that can be a pathway out of homelessness, and, of course, overnight shelter.

Spotlight...

Joan Jampel



JOAN JAMPEL AND FAMILY VIEWING AUTOGRAPH LETTERS COLLECTIONS AT THE DETROIT PUBLIC LIBRARY



JOAN GIVING OPENING REMARKS AT THE EXHIBIT AT THE DETROIT PUBLIC LIBRARY

The Leo M. Franklin Archives is so proud of **Joan Jampel** and all her work surrounding the new exhibit at the Detroit Public Library. Mrs. Jampel is a dedicated archives committee member and, along with her husband Dr. Robert Jampel, sponsors the annual Jewish History Detectives Lecture series.

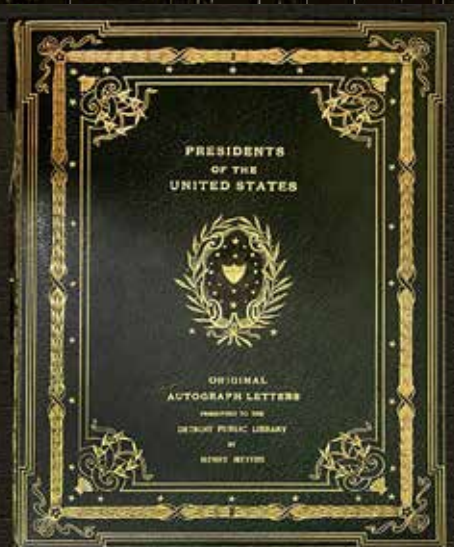
When Henry Meyers, Mrs. Jampel's father, served as the president of the Detroit Library Commission, he worked to collect signed letters from all of the United States Presidents. After Henry Meyers passed away, his family donated the letters to the main branch of the DPL. Since then, the dedicated Detroit Public Library staff worked to continue the collection, but a few letters were still missing. Following the footsteps of her father, Mrs. Jampel saw an opportunity to complete a passion project that Henry Meyers had started. After connecting back to this project through a docent at the Detroit Public Library, Mrs. Jampel worked with staff and volunteers to find the remaining five letters. Carl Levin contributed three letters from his papers from Presidents Bill Clinton, George W. Bush, and Barack Obama. Mrs. Jampel contacted book dealers and purchased the remaining two letters from Presidents Jimmy Carter and George H. W. Bush.

Mrs. Jampel's hard work ensured that her father's work was brought up to date. In February, her grandchildren were with her at the exhibit opening at the Detroit Public Library to witness the incredible work their family completed. "I've got to finish this collection" Mrs. Jampel told herself a few years ago, and "It all sort of fell into place." When I asked her how she felt about seeing the collection on display at the DPL she focused in on how it felt to "look at the expression on my 11 year old granddaughter's face."

U.S. PRESIDENTIAL AUTOGRAPHS: An Exhibit of Letters from the Special Collections Department

FEBRUARY 6 – MARCH 5 @ DETROIT PUBLIC LIBRARY

Visit DPL now through March 5 to view this unique collection of presidential letters. This collection was started by Henry Meyers who was president of the Metropolitan Detroit USO and the Jewish Welfare Board and Jewish Community Center. He was president, vice-president, and secretary for the Detroit Library Commission. In recent years, the collection was completed by Meyer's daughter, **TBE'S VERY OWN JOAN JAMPEL!**



WHO WERE THE MEYERS?

5 GENERATIONS



DELIA IMERMAN MEYERS AND HENRY MEYERS

Joan Jampel's family has been involved at Temple Beth El for multiple generations, spanning over 100 years! Her mother, Delia Imerman Meyers, was childhood friends with Rabbi Franklin's daughter, Ruth. Joan's father, Henry Meyers, was a lawyer with Friedman, Meyers, and Keys. He was president of the Jewish Community Center, vice-president of the Jewish Welfare Federation, president of the Detroit USO during World War II, and president of the Detroit Library Commission. The Jewish Community Center library is named in his memory. Delia Imerman Meyers was president of the Temple Beth El Sisterhood and a Trustee of Temple. She was also president of the Michigan State Federation of Temple Sisterhoods. Today, the 5th generation of this family are active Temple members and MASA students!

The Leo M. Franklin Archives has a handful of signed letters from United States Presidents, too! The letters include various congratulatory messages for anniversaries of Temple Beth El and the Young People's Society. From different collections throughout the archives, the presidential letters include signatures from Presidents Bill Clinton, Ronald Reagan, and Richard Nixon, as well as a few copies of the "thank you" letters sent to soldiers from President Harry Truman.

DID YOU
KNOW?

THE WHITE HOUSE
WASHINGTON

October 11, 2000

Greetings to everyone gathered to celebrate the 150th anniversary of Temple Beth El of Bloomfield Hills.

The anniversary of a place of worship is a testament to the lasting faith of a community. This faith is a covenant that binds members of a congregation together in a spirit of fellowship.

Our country was founded on a great tradition of religious liberty. This freedom helps to unite our nation of diverse faiths and creeds and gives us common ground for tolerance and understanding of others.

Your precious faith and freedom come with great responsibilities. This celebration is a reminder of the ways that God's gifts can be used to fulfill our obligation to help others.

Best wishes for a memorable ceremony and for great success in the future.

Bill Clinton

THE WHITE HOUSE
WASHINGTON

April 25, 1986

I am pleased to send warm greetings and congratulations to the members of the Young People's Society of Temple Beth El and those gathered for your 100th anniversary celebration in Birmingham, Michigan.

Over the past century, your organization has fostered the proud traditions of Judaism while working for the well-being of the entire community. Every American benefits from your efforts because they uphold the moral values on which our great country was founded.

I warmly commend the members of the society and the parents, teachers, and counselors who have encouraged you to cherish the magnificent legacy of your religion and culture.

Nancy joins me in sending you a hearty Masi Tov. God bless you all.

Ronald Reagan

OFFICE OF THE VICE PRESIDENT
WASHINGTON

June 22, 1955

Dear Friends:

This is just a note to thank you for your thoughtfulness in sending me a copy of "The Beth El Story."

I am looking forward with great pleasure to reading this study of the coming of the Jew to Detroit and Michigan. The members of the Temple Beth El should be congratulated on making possible the publication of this book.

With every good wish,

Sincerely,

Richard Nixon

Temple Beth El
Detroit
Michigan



WILSON S. STETSON

To you who answered the call of your country and served in its Armed Forces to bring about the total defeat of the enemy, I extend the heartfelt thanks of a grateful Nation. As one of the Nation's finest, you undertook the most severe task one can be called upon to perform. Because you demonstrated the fortitude, resourcefulness and calm judgment necessary to carry out that task, we now look to you for leadership and example in further exalting our country in peace.

Harry Truman

WE ARE PROUD

OUR SPIRIT IS GROWING



EZRA KALMOWITZ

Ezra Kalmowitz, son of Cantor Rachel and Carey Kalmowitz and Anne Adelson, has been named to the fall semester Dean's List with Distinction at Duke University in Durham, NC. The Dean's list with Distinction is an academic honor achieved by the top 10% of students in the College of Arts and Sciences. He has been named to this list each of his first three semesters in college.

Ezra is a sophomore at Duke, majoring in Biology with a concentration in Neurobiology. He graduated from Bloomfield Hills High School in 2017. Way to go, Ezra!



JEREMY POSNER

"Fun"GINEER Jeremy Posner invented a new toy, Jixelz, that's coming to market! Jeremy began his own company, Shenanigans Toys and Games, in mid-2017 with a 3D printer, a headful of ideas, and his parents' dining room table. To those who attended his Monopoly-themed Bar Mitzvah, appropriately named Jeropoly, it wasn't a surprise that he catapulted into such a career. A Temple Beth El member since 1988 (the year of his birth), Jeremy has never been short on support. His parents, Ken and Gail Posner, and brother Alan, fueled his competitive, fun-loving, and strategic nature.

Jeremy has a BS in Mechanical Engineering from the University of Michigan. He currently lives in Ferndale with his wife, Ali, and his dog, Kiwi.

Keep an eye out for Jixelz coming soon to the TBE Gift Shop!



RABBI EMERITUS DANIEL B. SYME

Rabbi Emeritus Daniel B. Syme has been selected as a 2019 Distinguished Warrior by the Urban League of Detroit & Southeastern Michigan. This award is presented to Rabbi Syme in honor of his legacy and lifetime of work in Black-Jewish relations, suicide prevention, and interfaith activities. Rabbi Syme, who is one of five honorees this year, is the first rabbi to receive this award in its 40 year history. The award, along with a tribute video highlighting Rabbi Syme's civil and human rights contributions, will be presented at the Annual Salute to Distinguished Warriors Dinner on March 21.

This event supports the Urban League and helps fulfill its mission of empowering communities and changing lives through youth and education initiatives, workforce development, job training and employment counseling.

SHARE YOUR
SIMCHAS

FAMILY ENGAGEMENTS • MARRIAGES • BIRTHS

If you or a family member would like us to share your good news in the TBE Bulletin

NEW ARRIVALS



DYLAN SLOANE WERBLING

BORN DECEMBER 3, 2018

**DAUGHTER OF
JENNIFER & BENJAMIN WERBLING**

Grandfathers: Abraham Werbling
and Jeffrey Goldberg.



ELLA MAPLE MILLER

BORN DECEMBER 31, 2018

**DAUGHTER OF
DANA & JONATHAN MILLER**

Grandparents: Joyce and Steven Miller,
Jon Darmstadter, and Vicki Schwartz.
Great-grandparents: Joan Schwartz,
Pearl Darmstadter, and Martin Miller.



BEAU BROOKS FARBMAN

BORN JANUARY 23, 2019

SON OF NADINE & DAVID FARBMAN

Little brother of Hunter, River and
Fischer. Grandparents: Suzy and Burt
Farbman and Tonia and Lyle Victor.



EMMA NICOLE HERC

BORN JANUARY 28, 2019

DAUGHTER OF ERICA & DAVID HERC

Grandparents: Karen and Scott Lewis,
and Sharon and Robert Herc.
Great-grandparents: Marcia and
Charles Lewis, and Elaine Frazis.



MEET JENNIFER RITCHIE

*Assistant to Rabbi Miller
and Rabbi Brudney*

Tell me about yourself.

I was born in Royal Oak and raised in Shelby Township. I graduated from Utica High School and then earned my BS in Elementary Education at Oakland University. I taught middle school math and science in Detroit for several years before moving to Nashville, TN in 2015. I love country music and moved to Nashville primarily to see as many country shows as possible, but I also taught middle school math there. I moved back to this area about a year ago to help care for my mom. She was one of ten children so I have a lot of family nearby. I love spending time with my niece and nephew in particular and make it a point to go to their games and band concerts.

What do you do in your free time?

Country music! Fun fact: I've traveled to 10 states just to see country music shows! I prefer the lesser-known artists who will stick around and talk with you after a show. I also like to bake cookies, breads, and cakes. I'm pretty good at cake decorating and have designed cakes for many occasions for my family and friends. I also like to cross-stitch, sew, and scrapbook.

What's your favorite food?

We grew up picking strawberries near our cottage up north each summer and I've always loved them. But my favorite type of food is definitely Mexican.

How long have you worked at Temple?

I started working at Temple as a temp in July 2018 and was hired full-time at the end of October. I'm not Jewish so it's been super interesting learning all about Judaism through my position in the Rabbis' Study. I had my colleagues make me a glossary so I could learn about the holidays, culture, and common Hebrew phrases. I really like languages and I pick them up easily so it's been great, and Google has been helpful too. As a Christian, I love learning about the similarities and differences between Judaism and Christianity - I really had no idea how much we share!

What do you like about working at Temple?

When I moved back to the area, I didn't have a teaching position lined up and I wasn't sure I wanted to go back into the classroom. Temple needed an administrator and the location was convenient. But now that I've been here for more than six months, I just love how everyone is happy! Staff and members are helpful, friendly, and pleasant. It's an exciting change from teaching, and I appreciate the new opportunity.

SPECIAL ACCOMPLISHMENTS

... contact Lindsey at lfoxwagner@tbeonline.org or 248.851.1100.

TBE UPCOMING PROGRAMS/EVENTS

MARCH

JOIN US SUNDAY

TBE Kid-ish Club

MARCH MADNESS MACCABI GAMES

**SUNDAY, MARCH 3
9:30 AM**

Between March Madness and the Maccabi games coming to Detroit this summer, we're psyched for sports!

Come join Mr. Matt Najor and Miss Alexis Noel of the ECC for sports mayhem at this special Sunday edition of Kid-ish Club!

FREE & OPEN TO THE COMMUNITY

For more information or to RSVP, contact Rabbi Megan Brudney at mbrudney@tbeonline.org or 248.851.1100.



MUSIC SHABBAT
FRIDAY, MARCH 1 *(details pg. 27)*

KID-ISH CLUB: MARCH MADNESS MACCABI GAMES
SUNDAY, MARCH 3 *(← details)*



World Sabbath of Religious Reconciliation!

03 WORLD SABBATH
SUNDAY, MARCH 3
4:00–6:00 PM
@ THE ISLAMIC HOUSE OF WISDOM

An interfaith experience of music and prayer: Seeking to build a world of tolerance, justice, faithfulness, and peace.

GLAZER INSTITUTE
THURSDAY, MARCH 7
(details pg. 12)

BROTHERHOOD BREAKFAST SPEAKER
SUNDAY, MARCH 10 *(details →)*

BUBBIE ZAYDIE TEMPLE TOTS

10 BUBBIE/ZAYDIE TEMPLE TOTS
SUNDAY, MARCH 10
10:00 AM

Enjoy quality time with your grandchildren and create lasting memories. Meet in the ECC gym. Facilitated by an Early Childhood Educator. FREE & OPEN to the community. For more information, contact Deborah Morosohk at dmorosohk@tbeonline.org or 248.851.1100.



11 BEREAVEMENT SUPPORT GROUP
MONDAY, MARCH 11
6:30 – 7:30 PM

New!

Come together in a safe and supportive environment. Facilitated by a Licensed Professional Counselor specializing in grief and loss. **ADDITIONAL DATES:** Friday, March 29, 1–2pm; Monday, April 8, 6:30–7:30pm; Wednesday, April 24, 1–2pm; Monday, May 13, 6:30–7:30pm; Friday, May 31, 1–2pm. Bereavement Support Group is free and open to the community. For more information contact Rachel Rudman at rrudman@tbeonline.org or 248–851–1100.



15 SHABBAT IN THE ROUND

FRIDAY, MARCH 15
7:00 PM

Please join us for a participatory service using rounds as our guide – in shaping our space, in sharing our music, and in bringing each other into a circle of ruach (spirit) and prayer. Please join us after services for a special Oneg Shabbat celebrating Cantor Rachel's 15th Anniversary at TBE!



16 SISTERHOOD SHABBAT

SATURDAY, MARCH 16

Please join Sisterhood in worship...if you own a tallit, please bring it. We will be taking a photo of women wearing their tallitot on the bimah in support of the Women of the Wall. Stay for Nosh and Knowledge after services (information below).



16 NOSH/ KNOWLEDGE

SATURDAY, MARCH 16
12:30 PM

As we dive into the fun of Purim, come learn some of the secrets behind the holiday. We'll look at the megillah text itself as well as supplementary texts that bring a different perspective. Free and open to the community. To assist with food quantity, please RSVP to Nancy Fortier at 248.495.5013.

PURIM CARNIVAL

SUNDAY, MARCH 17 (details pg. 16)

ADULT PURIM PARTY SPIEL

WEDNESDAY, MARCH 20
(details pg. 17)

KID-ISH CLUB: PURIM BLOWOUT

FRIDAY, MARCH 22 (details pg. 17)



24 RABBI MEGAN BRUDNEY "COMBATING ADDICTIONS"

SUNDAY, MARCH 24
10:30 AM

The tragedy of the opioid epidemic – some of us have or know people who have struggled with the relentless disease of addiction. Come join us for Jewish insight and how Judaism can help us stay healthy and safe.



27 KNITTING CLUB

WEDNESDAY, MARCH 27
5:00 PM

Meet and socialize with knitters and crafters in the Prentis Memorial Library! For more information, contact Helen Sorser at 248.798.7087.

MOVIES AND MUNCHIES

THURSDAY, MARCH 28

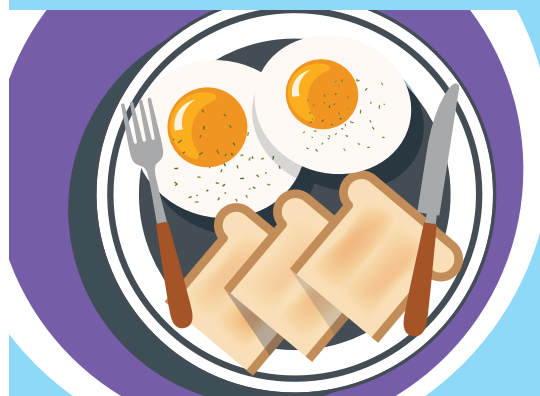
LIMMUD MICHIGAN

SUNDAY, MARCH 31

A community day of Jewish learning at the JCC of Metro Detroit/Frankel Jewish Academy. For more information, visit www.limmudmichigan.org.

BROTHERHOOD

TBE Breakfast Speaker Series



Understanding the Different Types of Christians

SUNDAY, MARCH 10
9:00 AM Breakfast
9:30 AM Pastor Nate Phillips



We hear a lot about Protestant, Catholic, Mainline, and Evangelical – join us as Pastor Nate Phillips from Kirk in the Hills describes today's variation in the Christian world.

The Issue of Hate and Anti-Semitism

SUNDAY, APRIL 14
9:00 AM Breakfast
9:30 AM Dr. Jose-Alain Sahel



Dr. Sahel, doctor and scientist, originally from France, moved to the United States in 2016 to escape anti-semitism and became the chair of the Department of Ophthalmology at the University of Pittsburgh Medical School. He will be speaking about the recent events in Pittsburgh as well as on the issue of hate and anti-semitism.

GENEROUSLY SPONSORED BY DR. STAN LEVY.

HISTORY HAPPY HOUR



WEDNESDAY, APRIL 10
6:30 – 8:30 PM

**@ THE OAKLAND ART NOVELTY
COMPANY IN FERNDALE**

In partnership
with



**NEXTGen
Detroit**

History Happy Hour is a **NEW**
evening program for young
professionals.

- Sip craft cocktails by award-winning bartender, Chas Williams
- Learn about Jewish Detroit during the prohibition era

Presentations by archivists Laura Williams, Leo M. Franklin Archives of Temple Beth El, and Robbie Terman, Leonard N. Simons Jewish Community Archives of Federation.

For more information
or to RSVP,
contact Laura at
lwilliams@tbeonline.org
or 248.851.1100.

**SPONSORED BY THE
MARJORIE & MAXWELL
JOSPEY FOUNDATION**

UPCOMING PROGRAMS/EVENTS CONT.

APRIL



08

SISTERHOOD MEETING AND ROSH CHODESH

MONDAY, APRIL 8
7:00 PM MEETING
8:00 PM PROGRAM

Passover gives us the opportunity to discuss current social justice issues at our Seder. Our Rosh Chodesh will discuss items that could be added to your table to start the discussion. For more information, contact Cindy Bolokofsky at bolokofskyc@gmail.com.

BETH ELDERS JEWS OF THE WORLD: SPAIN

WEDNESDAY, APRIL 10 (details ➡)

HISTORY HAPPY HOUR

WEDNESDAY, APRIL 10 (← details)



11

THREE LANGUAGES OF HOLESNESS

THURSDAY, APRIL 11
7:00 PM

At the Birmingham Community House. Join us as we come together to learn how each faith understands holiness in our Sacred texts, traditions, rituals and practices.



12

MUSIC SHABBAT + QUINQUENNIAL

FRIDAY, APRIL 12
7:00 PM

High Energy, spiritual, and thought-provoking service. *Oneg* sponsored by Cathy and Jim Deutchman.

TOT SHABBAT: MAGIC SHOW

SATURDAY, APRIL 13 (details ➡)

BROTHERHOOD SPEAKER

SUNDAY, APRIL 14 (details pg. 9)



14

JBETY PROGRAM: GAME DAY

SUNDAY, APRIL 14
NOON

JBETY will be spending the afternoon with lunch and playing LIFE SIZED games! Jenga, flip cup, hungry hungry hippos and more! No Charge.

**BUBBIE, ZAYDIE
TEMPLE TOTS**

SUNDAY, APRIL 14 (details pg. 9)

ECC KIDZ BOP

SUNDAY, APRIL 14 (details pg. 20)

SECOND NIGHT SEDER

SATURDAY, APRIL 20 (details pg. 14)



24

**KNITTING,
CRAFTS AND
LAUGHS**

WEDNESDAY, APRIL 24
5:00 PM

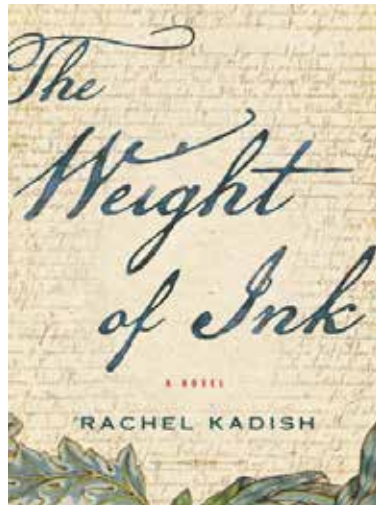
Meet and socialize with knitters and crafters in the Prentis Memorial Library! For more information, contact Helen Sorser at 248.798.7087.

YIZKOR/PLAQUE DEDICATION

FRIDAY, APRIL 26 (details pg. 27)

SAVE A LIFE SUNDAY

SUNDAY, APRIL 28 (details pg. 13)



29

**BITES AND BOOKS
THE WEIGHT OF
INK**

BY RACHEL KADISH
MONDAY, APRIL 29
10 AM and 7 PM

Set in London of the 1660s and the early twenty-first century, this winner of the National Jewish Book Award and a USA Today bestseller is the interwoven tale of two women of remarkable intellect. Ester Velasquez is an emigrant from Amsterdam who is permitted to scribe for a blind rabbi just before the plague hits the city. Helen Watt, an ailing historian with a love of Jewish history, is summoned by a former student to view a cache of newly discovered seventeenth-century Jewish documents. When she enlists the help of Aaron Levy, an American graduate student as impatient as he is charming, she embarks on a last project: to determine the identity of the documents' scribe, the elusive "Aleph." Electrifying and ambitious, *The Weight of Ink* is about women separated by centuries, and the choices and sacrifices both must make in order to reconcile the life of the heart and mind.

**TBE SUNDAY MORNING
BREAKFAST**

9:00 AM

Enjoy a delicious breakfast prepared by the TBE Brotherhood in Handleman Hall every Sunday while MASA is in session. Full Breakfast \$3. Bagel & beverage \$2.



Presented by Rabbi Mark Miller



Ibn Shoshan Synagogue, built in 1180, Toledo, Spain

Wednesday, April 10 @ 1 PM

**DESSERT & COFFEE
FOLLOWING TALK**

Although the Spanish Inquisition expelled Jews in 1492, the history of our people in Spain is as rich, exciting, and diverse as almost any place on earth. Join us for a fascinating look into the Golden Age of Spain and beyond.

For information, contact Danielle at dgordon@tbeonline.org.

**TOT
SHABBAT**

**SATURDAY,
APRIL 13
9:30 AM**

**FREE & OPEN TO THE
COMMUNITY**



**Discover the real *magic*
of Shabbat--join us for
Shabbat songs followed by a
live magic show!**

For more information or to RSVP, contact Rabbi Megan Brudney at mbrudney@tbeonline.org or 248.851.1100.



THE POWER OF FAITH IN AMERICA



RACHEL LASER



TEMPLE
BETH EL

7400 Telegraph Road
Bloomfield Hills, MI 48301
www.tbeonline.org

For more information or to
RSVP, contact Jennifer at
jritchie@tbeonline.org or
248.851.1100.

2019 CO-SPONSORS



MARCH 2019 | TBEONLINE.ORG

ANNOUNCING THE 77TH ANNUAL
RABBI B. BENEDICT & ADA S.

GLAZER INSTITUTE ON JUDAISM

THE POWER OF FAITH IN AMERICA

How Religion Strengthens our Democracy

FEATURING RACHEL LASER

President and CEO of Americans United for Separation of Church and State

THURSDAY, MARCH 7 • 7:00 PM • TEMPLE BETH EL

Each year, Temple Beth El hosts the Glazer Institute as an interfaith forum to build relationships, learn from one another, and take vital steps toward creating a stronger community across Metro Detroit. This year, we will focus on a current and complex question: how does the American model of separating church and state provide us, as religious leaders, with a profound opportunity to impact society in a positive way?

Rachel Laser became president and CEO of Americans United for Separation of Church and State in February 2018. She is the organization's first non-Christian and female leader in its 71 year history. Rachel is a lawyer, advocate and strategist who has dedicated her career to making our country more inclusive. In her position at Americans United, Rachel oversees the organization's work to protect freedom of conscience for all and ensure religion is not used to justify discrimination. Prior to coming to AU, Rachel held positions as deputy director of the Religious Action Center of Reform Judaism, director of the Culture Program at Third Way and senior counsel at the National Women's Law Center (NWLC). Rachel is a graduate of Harvard University and the University of Chicago Law School.

Our Glazer Institute is the longest-running Interfaith Institute in the country, celebrating Temple Beth El's historic and growing commitment to interfaith relations. It is free and open to the community.

Life After Loss

BEREAVEMENT SUPPORT GROUP

Come together in a safe and supportive environment to share your experience and gain skills to successfully walk through the grief process. Facilitated by a Licensed Professional Counselor specializing in grief and loss.

MONDAY, MARCH 11
6:30 - 7:30 PM

FRIDAY, MARCH 29
1:00 - 2:00 PM

MONDAY, APRIL 8
6:30 - 7:30 PM

WEDNESDAY, APRIL 24
1:00 - 2:00 PM

MONDAY, MAY 13
6:30 - 7:30 PM

FRIDAY, MAY 31
1:00 - 2:00 PM

Bereavement Support Group is free and open to the community. For more information contact Rachel Rudman at rrudman@tbeonline.org or 248.851.1100.

NEW!

Save a Life

Sunday

SUNDAY, APRIL 28 • 9:00 AM - 1:00 PM

- Blood Drive *
- Genetic Testing
- Bone Marrow/Stem Cell Donation Information and Sign Up
- CPR Training ** (*infants, toddlers, adult*)
- First Responder Training and Information
- Car Seat Safety Checks
- Child safety kits and tips
- Allergy Awareness/Epi Pen Training
- Suicide Prevention Awareness

IN PARTNERSHIP WITH



TEMPLE
BETH EL



For more information about this event, contact Danielle Gordon, 248.325.9706 or dgordon@tbeonline.org.

**By appointment only **No certificate will be issued*



**SAVE \$5
PER PERSON!**
REGISTER BEFORE
APRIL 1ST

Make Passover a family affair
and join us at the

Beth El Family Seder

SATURDAY, APRIL 20
6:00 PM HANDLEMAN HALL

Enjoy a delicious Passover meal without the cooking or cleanup!
Join your TBE clergy and friends to experience the story of our freedom.
The interactive Seder will include music, a special activity for kids, prizes for the Afikoman, and more.

Family Style Dinner
by Cutting Edge
Cuisine



\$50 per Adult
\$30 per Child
CHILDREN UNDER 3 ARE FREE!

Advanced registration to 248.325.9706 or
dgordon@tbeonline.org by April 10 is required.

Reservations can be made online at www.tbeonline.org.

Name (s) _____

Phone _____ Email _____

Address _____

City _____ Zip _____

Number of Adult (s) Attending _____ @ \$50 per person = \$ _____

Number of Children Attending _____ @ \$30 per child = \$ _____

Number of Children 3 & Under Attending _____

My check is enclosed \$ _____ or Charge to my

VISA MASTERCARD AMEX

(WILL NEED TO ADD IN THE 3% copy for Credit Card use)

Card # _____

exp. date _____ sec. code _____

Name on Card _____

Total Number of People Attending _____ (Including Children)

CUTTING EDGE CUISINE PASSOVER CARRYOUT MENU

SEDER ESSENTIALS

Gefilte Fish	\$5.75 each
Chopped Liver	\$11 pound
Charoset	\$11 quart
Chicken Soup	\$8 quart
Matzo Ball	\$1.50

SEDER DINNER

Braised Beef Brisket	\$15 pound
Roasted Turkey Breast	\$15 pound

SIDES

Herb & Garlic Roasted	
Yukon Gold Potatoes	\$32
Potato Kugel	\$30
Orange, Cinnamon, & Vanilla	
Glazed Sweet Potatoes	\$32
Sweetened Matzo Kugel	\$32
Roasted Cauliflower, Brussel	
Sprouts & Onions	\$30

DESSERTS

Coconut Lime	
Macaroons	\$7 dozen
Matzo Toffee	\$12 bag
Chocolate Chip	
Mandelbread	\$12 dozen
Cinnamon Pecan	
Mandelbread	\$12 dozen
Fudge Brownies	\$14 dozen

PICK UP

APRIL 19 1PM-3PM

**ORDERS TAKEN UNTIL
APRIL 12.**

CALL TODAY

248.865.0629



Please join your Temple family as we celebrate the Bar Mitzvah of Rabbi Miller and Rachel Ann's son, Abraham.

SATURDAY, MAY 4
10:30 AM
DeRoy Sanctuary

Everyone is invited to stay for a Kiddush luncheon following services.

For more information, contact Jennifer at jrichie@tbeonline.org or 248.851.1100.

SAVE THE DATE!

15



7pm • Saturday • June 29 • TBE



CO-CHAIRS
WENDY & DOUG
HAMBERGER

LISA & JARED
ROTHBERGER

ADVISOR
ANNE WEINER

FOR MORE
INFORMATION,
CONTACT
LINDSEY AT
LFOXWAGNER@
TBEONLINE.ORG
OR 248.851.1100.

Food Trucks!



...plus

Live Music!



Drinks!



...and SO much more!

Celebrate Purim
with your TBE
Family!



● May our entire extended community have a very happy Purim.

SUNDAY, MARCH 17

Bring a box of pasta to use as a noisemaker at the Megillah reading and then donate to Yad Ezra.

PURIM CARNIVAL

11:15 AM

MEGILLAH READING

The Greatest Haman – a purim spiel with the songs from The Greatest Showman (presented by the TBE Youth Choir) and a Megillah Reading

NOON – 2:00 PM
CARNIVAL

Highlights include:

- MECHANICAL BULL
- LASER TAG
- HI STRIKER
- MOON BOUNCE
- INFLATABLE OBSTACLE COURSE
- AND MORE!

Tickets:

\$20 Bracelet (unlimited tickets)

- or -

.50 cents per ticket

Kiddle Carnival

\$10 Bracelet (unlimited tickets)

**Lunch not included with ticket purchase, cash only for lunch.*

In Partnership with Sisterhood and Brotherhood!

To become a donor or to volunteer,
contact Scott at slowen@tbeonline.org
or 248.851.1100.

WEDNESDAY, MARCH 20

THE GREATEST HAMAN

ADULT PURIM PARTY SPIEL

7:00 PM

Join us for a show-stopping
Purim Spiel featuring parodies of
the songs from the hit movie-musical

"THE GREATEST SHOWMAN"

- LIGHT HORS D'OEUVRES
- ENTERTAINMENT BY DETROIT CIRCUS
- SPECIALTY DRINKS BY
AWARD-WINNING
BARTENDER,
CHAS WILLIAMS

\$10 SUGGESTED
DONATION



For more information or to RSVP,
contact Danielle at dgordon@tbeonline.org
or 248.851.1100

FRIDAY, MARCH 22

KID-ISH CLUB Purim BLOWOUT

5:30 PM

Come in costume and ready to
party at our annual Purim Blowout!

We'll start with Purim songs and
continue with dinner, bounce houses,
a balloon artist, and more!

\$5 PER CHILD / \$10 PER ADULT



For more information or to RSVP, contact
Rabbi Megan Brudney at mbrudney@tbeonline.org
or 248.851.1100.



TBE TALKS

The first ever TBE Talks was a resounding success! Speakers Cheryl Chodun, Ashley Goldberg, and Dhani Jones shared their knowledge, passion, and message with the crowd through both laughter and tears. If you know of someone who would like to speak at our next TBE Talks, please contact Danielle at dgordon@tbeonline.org or 248.851.1100.



NEW MEMBER SHABBAT

On Friday, February 1, 15 of our new member families came together for New Member Shabbat. Our new families enjoyed a complimentary Shabbat dinner and received a new member gift basket. It was an evening for these new members to get to know one another and meet other Temple members, and to spend time with our TBE clergy, staff, and Board members. They were also invited up to the bima as a group during a wonderful Music Shabbat service to receive a blessing of welcome on behalf of the congregation. Special thanks to our Membership Committee co-chairs Melissa Schiller and Natalie Shirley, and committee member Karen Lowen.



KID-ISH CLUB: DIY WITH TOYOLOGY

We had the most fantastic time singing Shabbat songs and then playing in a veritable wonderland of toys, activities, and do-it-yourself projects, all donated by our friends at Toyology (owned by members and ECC parents Aric and Jenna Klar). Thank you to Toyology and all of the families who came and enjoyed a great morning at TBE!



19



K-5 K'HILAH: MOVIE NIGHT

Our second annual K-5 K'hilah Club Movie Night was a showstopping good time. With close to 40 people eating pizza, popcorn, and movie candy, playing games, and watching the movie *The Greatest Showman*, we enjoyed seeing old and new friends. Thanks to our co-chairs for this event, Pam Rensch and Debbie Fuger, for all that you did to ensure a successful event.



SHOP, SCHMOOZE AND SHAVASANA

What a fantastic night spearheaded by our PTO Presidents Erin Simmerman and Nicole Van House. With over 55 people in attendance, we had a great yoga class and a very exciting raffle. Some lucky lady even won a workout party for 14 people at Equilibrium Pilates Studio. A special thank you to all of our donors and vendors!



EARLY CHILDHOOD CENTER UPCOMING EVENTS

MARCH

ECC PURIM PARADE

Friday, March 22 @ 9 AM

APRIL

SPRING BREAK

NO SCHOOL

Monday, April 1 –
Friday, April 5

CLASSES RESUME

Monday, April 8

KIDZ BOP

PTO Program (details ↓)

EREV PASSOVER

NO SCHOOL

Friday, April 19

ECC PASSOVER SING ALONG

Wednesday, April 24 @ 9 AM

Join us in Handelman Hall as we sing together with our clergy and Mr. Matt. Sit with your child and his/her class and hear all of your favorite Passover songs that your child has learned.

PASSOVER – NO SCHOOL

Friday, April 26

For information, contact Jen at jgoren@tbeonline.org or 248.851.1100.

KIDZ BOP

SUNDAY, APRIL 14 5:00 PM

DANCING • PRIZES • DINNER
AND MUCH MORE!

For information or to RSVP, contact Jen at jgoren@tbeonline.org or 248.851.1100.

**\$36 FOR FAMILY UP
TO FIVE PEOPLE,
OTHERWISE
\$7 PER CHILD AND
\$12 PER ADULT**

**HELP US BUILD
OUR PLAYGROUND
THIS SUMMER!**



MASA AND TU BISH'VAT

In honor of Tu Bish'vat, Masa students learned about the 7 species listed in the Torah: wheat, barley, grapes, figs, pomegranates, olives and dates. They ground wheat and barley, stomped on grapes, tasted figs and pomegranates, and squeezed olive oil and date honey. It was a great opportunity to connect with both the biblical and modern land of Israel.



MASA UPCOMING EVENTS

MARCH

**VOLUNTEERING AT
YAD EZRA** (9–12th Graders)
Sunday, March 3rd BETY
Noon – 2:00 PM

**5TH GRADE MATTAN
TORAH PROGRAM**
Saturday, March 9

**PURIM CARNIVAL
SET-UP**
(JBETY and BETY Volunteers)
Saturday, March 16
Noon – 2:00 PM

**APRIL
SHABBAT SERVICE
WITH GRADUATION**
Friday, April 12

**SHABBAT SERVICE
WITH CONFIRMATION**
Saturday, April 13

JBETY PROGRAM
Sunday, April 14
SUNDAY, APRIL 14 @ NOON
JBETY will be spending the
afternoon with lunch and
playing LIFE SIZED games!
Jenga, flip cup, hungry
hungry hippos and more!
No Charge.

**4TH GRADE B'NAI
MITZVAH KICKOFF**
Sunday, April 14

**2ND/3RD GRADE
FAMILY PROGRAM**
Friday, April 26

**B'NAI MITZVAH
ORIENTATION**
(6th Grade)
Saturday, April 27
3:30 – 5:00 PM

BETY35 LOCK-IN
Saturday and Sunday,
April 27 & 28

JBETY LCA TOUR

Another first for JBETY was an afternoon spent touring Little Caesars Arena! WE explored many behind the scenes and exciting parts of the home of our Detroit Red Wings and Pistons. We went from courtside learning about the arena all the way to the top gondola seats. Did you know the arena can transform from hockey to basketball in 3.5 hours? All in all, it was a great afternoon exploring the 2018 sports facility of the year!



January 1 - February 1, 2019

**RABBI BRUDNEY
DISCRETIONARY FUND**
IN MEMORY OF

DOLLY LAX

FRED LAX

The Children of Dolly and Fred Lax
**RUTH FRANKLIN EINSTEIN
EDUCATION ASSISTANCE FUND**
IN HONOR OF

60TH WEDDING ANNIVERSARY OF

SANDY & LEE MARKS

Elaine & Robert Tell
GENERAL OPERATING FUND
IN MEMORY OF

ANNE SLOMAN

SHIRLEE SNIDER MARSHALL

Brenda & Sanford Passer

ANNE SLOMAN

Marion & Michael Freedman

BEVERLY REMER

Gail Harris Mandel

HARVEY LIPSITZ

Arlene & Mark Rubinstein

JOYCE EPSTEIN

Dr. & Mrs. Glenn Saperstein, Marion &
Michael Freedman, Lisa & Steve Rotter

MORRIS RUBIN

Lois R. Weintraub

NATHAN POTACH

Mr. & Mrs. Morris Potash

PHILIP BOLTON

Paula Marks-Bolton

ROSELEE STOLER

Barbara Cohen
**PAUL & SONIA HANDLEMAN
MEMORIAL FUND**
IN MEMORY OF

ALLAN B. FREEDMAN

Rose & David Handleman
IN HONOR OF

JOHN KESSLER

Rose & David Handleman
**RABBI RICHARD C. & RENDA HERTZ
GIFT OF LIFE FUND**
IN MEMORY OF

ANNE SLOMAN

Eleanor Blum
**HOWARD & CELIA JACOBSON
MEMORIAL FUND FOR THE BETH
ELDERS OF TEMPLE BETH EL**
IN HONOR OF

BIRTHDAY OF ERIC GRODAN

Mr. & Mrs. E David Brockman
**CANTOR KALMOWITZ CANTORIAL
EXPENSE FUND**
IN MEMORY OF

JOYCE EPSTEIN

Phyllis Loewenstein & Sheldon Plotnik
**CANTOR RACHEL KALMOWITZ
MUSIC FUND**
IN MEMORY OF

DOLLY LAX

FRED LAX

The Children of Dolly and Fred Lax

NORMAN BLOCK

Eileen Millstone
**FREDERICK H. MARX
MEMORIAL FUND**
IN MEMORY OF

FLORENCE ZOX

Michael & Jeannette Wertheimer
**RABBI MILLER DISCRETIONARY/
EXPENSE FUND**
IN MEMORY OF

BENJAMIN H. GOLDSTEIN

Carole Goldstein

IVAN SCHOLNICK

The Feinbloom, Leib and Scholnick Families
**HARRY & SALLY NOSANCHUK
CARING COMMUNITY FUND**
IN MEMORY OF

ANNE SLOMAN

IRVING GINSBERG

Harry Nosanchuk

NAOMI (CECILE) BEITNER MARK

HARWOOD

ROSALIND AL-AZEM

TRIBUTE FORM

Minimum contribution: \$18 per tribute. CONTRIBUTIONS ARE TAX DEDUCTIBLE

4 WAYS TO MAKE TRIBUTES

ONLINE: www.tbeonline.org/tributes
PHONE: Contact Laura Lucassian at 248.851.1100

EMAIL: llucassian@tbeonline.org
MAIL: Temple Beth El, 7400 Telegraph Road, Bloomfield Hills, MI 48301

• Credit card transactions will incur a mandatory non-refundable 3% convenience fee.

• No convenience fee for debit card transactions.

PLEASE PLACE MY CONTRIBUTION IN THE FOLLOWING FUND:

In Honor of: _____

In Memory of: _____

Enclosed please find \$ _____ or charge my ☐ credit ☐ debit card

exp. date _____ sec. code _____

Name on card _____

SEND ACKNOWLEDGMENT TO:

Name: _____

Address: _____

City/State/Zip: _____

DONOR'S NAME: _____

Address: _____

City/State/Zip: _____

Phone: _____

Member _____ Non-member _____

HOW DO YOU WISH THIS TRIBUTE TO BE SIGNED? _____

SUSAN HOWARD

Linda, Scott, Eric and Hilary Circus

IN HONOR OF

BIRTHDAY OF RUTH STOBER

Linda, Scott, Eric and Hilary Circus

SPEEDY RECOVERY OF SHIRLEY COHEN

Harry Nosanchuk

**FRIENDS OF THE PRENTIS
LIBRARY FUND**

IN MEMORY OF

JIMMY PRENTIS MORRIS

Maydee G. & Nelson P. Lande

ROBERT LAST

Sally & John Reinicke

A CONTRIBUTION

Dr. & Mrs. Claude Reitelman

SISTERHOOD BRAILLE FUND

IN HONOR OF

60TH ANNIVERSARY OF

LEE & SANDY MARKS

Susan Sovel, Fran & George Stern

THE NEW HOME OF

DR. ERIC & DORIS BILLES

Phyllis Kaplan

SPEEDY RECOVERY OF KAREN LOWEN

Judy Lipson

**RABBI DANIEL SYME
DISCRETIONARY FUND**

IN MEMORY OF

MANUEL ROTENBERG

Janice Vanstrien

CATHY SANDY

Collette Rosner

SUSAN HOWARD

Mr. & Mrs. Robert Solomon

SUSAN HOWARD

Scott Hamburger

IN HONOR OF

RABBI SYME'S KINDNESS

George Chaney

**TBE SENIOR STAFF
MITZVAH FUND**

IN MEMORY OF

DOLLY LAX

FRED LAX

The Family of Dolly & Fred Lax

**TEMPLE BETH EL MITZVAH
PROJECTS FUND**

IN MEMORY OF

ARON SHLEYPAK

Bella & Lev Shleypak

**TEMPLE BETH EL YOUTH
WING FUND**

IN MEMORY OF

JOYCE EPSTEIN

The Weitz Family

WE NOTE WITH SORROW THE PASSING OF...

DIANE GRANT. Mother of Steven (Marci) Grant and Allan (Sydel) Grant. Grandmother of Adam (Lindsay) Grant, Kevin Grant and Paul Grant. Great Grandmother of Levi, Tessa, Allison and Emma Grant.

BARBARA GOLDMAN. Mother of Scott (Julie) Goldman, Nicole (Peter) Ettinger. Grandmother of Alana, Elise, Ethan, Julianna, and Melody. Sister of Gordy (Leslie) Oliva. Aunt of Sydney, Chloe, and Liam. Cousin of Gail (Irwin) Lorber.

SYLVIA WOHLMAN. Mother of Anita (Sheldon) Pastor, Ruth Wohlman and Barry Wohlman. Grandmother of Shawna (Brian) Apple, Richard (MaJing) Pastor. Great-Grandmother of Noa and Talya Apple, and Mia Pastor. Sister of Morris (Rita) Levine. Aunt of Robin Levine.

ARON SHLEYPAK. Husband of Adel Shleypak. Father of Lev (Bella) Shleypak, Robert (Alona) Shleypak and Victoria Obukhova. Grandfather of Shaul (Chana) Obukhov, Dmitry Obukhov, Igor (Fiancee, Edeth) Shleypak, Gabriel Shleypak, and Tal Shleypak.

KATHLEEN MORGAN-SANDY. Wife of Lewis Sandy. Mother of Natalie, Jonah, and Matthew (Christina). Grandmother of Abigail and Charles. Sister of Jeffrey Morgan. Daughter-in-law of William (Marjorie) Sandy.

ANNE SLOMAN. Mother of Carol (Lawrence) Wittenberg, and Sue (Michael) Salesin. Grandmother of Faith (David) Becker, Lowell (Heather) Salesin, Amy (Adam) Gershwin, Nathan (Lauren) Wolfe, and Julie (Justin) Hirsh. Great-Grandmother of Aaron, Rachel, Jordan, Avery, Noah, Kate, William, Taylor, Mason, Charles and Asa.

BETTY ROSE PIANIN. Mother of Alissa Pianin, Marcy Pianin, and Debra (Rubin) Sinins. Grandmother of Jacob Allen (Laura Williams), Sophia Sinins, Benjamin Sinins, and Alexandra Sinins. Sister of Arthur (Carol) Plotkin. Sister-in-law of Elaine Plotkin.

FLORENCE A. ZOX. Mother-in-law of Sally Marx. Mother of Diana Marx Bloch, Barbara Zox Panzer, Sherry Zox (Dr. Arnold Deutchman) and Laurie Zox Leder (Gary Watkins). Grandmother of Julie Marx, Allison Bloch (Steven) Gold, Jennifer Bloch (Steve) Skok, Laura Bloch (Jeffrey) Kepes, Jonathan (Alicia) Bloch, Andrew (Abby) Marx, Carolyn (Alex) Marx, Scott Marx, Jason (Debra) Panzer, Elizabeth (Jeffrey) Satz, Jeffrey (Sarah) Panzer, Dr. Hallee Deutchman (Brian Pivar), Emilee Deutchman, Molly (David) Hepkin, and Kevin (Jasmine) Leder. and 23 Great-grandchildren!

SEYMOUR LUSKY. Husband of Harriet Lusky. Father of Eric Lusky, Mark (Erika) Lusky, Fred (Stacey) Lusky, and Alissa Lusky. Grandfather of Taylor, Jordyn, Jonah, Emma, Jessica and Shay Lusky. Uncle of Steve (Julie) Brown.

IDA LUCAS. Mother of Suzanne Lucas. Grandmother of Brooke Alison (Gordon Haber) Berman. Great-grandmother of Benjamin Haber.

DAVID LEE ROSENTHAL. Husband of Fern Rosenthal. Father of Jonathan Rosenthal, and Peter (significant other Tyler) Rosenthal. Father-in-law of Merritt Rosenthal. Grandfather of Stella and Logan Rosenthal. Brother of Gary (Denise) Rosenthal. Brother-in-law of Sandy (Dr. Glenn) Rosin.

JOYCE CANTOR EPSTEIN. Mother of Larry (Mary) Epstein, Bob Epstein (Joan Chernoff-Epstein), Barbara S. Epstein, and Margo (David) Epstein. Grandmother of Marisa (David) Ruby, Joshua Epstein, Meredith (Dr. Oren) Tepper, Jonathan Epstein (fiancée Abby Friedman), Brandon Epstein, Andrew (Jennifer) Kravis, and Torrie (Adam) Gleicher. Great-grandmother of Lev and Stella Tepper, Lennon Avi Rugby, Theo Kravis, and Aden Gleicher.

ESTHER STEINWAY. Mother of Marci (Dr. Steven) Grant, Dr. David (Karen) Steinway, and Barry (Karin) Steinway. Grandmother of Adam (Lindsay) Grant, Joshua (Maran) Grant, Matt (Svetlana) Steinway, Leslie (Daniel) Bernstein, Jodie (Ari) Sherizen, Amy Steinway, and Jordan Steinway. Great-grandmother of Levi, Tessa, Allison and Emma Grant, Lila and Isaac Bernstein, Ruth and Abe Sherizen, Polina, Evan and Leo Steinway. Sister of Benjamin (Ethel) Steinway.

CYNTHIA SIMON WAGNER. Wife of Lewis Wagner. Mother of Stuart (Maggie) Wagner, Hilary (boyfriend Michael Goldeen) Wagner and Justin Wagner. Daughter of Esther and Donald Simon. Sister of Robert (Debbie) Simon.

RUTH BLUMBERG. Mother of Robin Jol (Linda) Blumberg and Seth David Blumberg. Grandmother of Jason Randolph (Dr. Michelle) Blumberg, Zachary Simon (Kimberly) Blumberg, and Shawn (Rochelle) Green, Ryan Blumberg, and Brett Schmaidt. Great-grandmother of Ella Rose Blumberg, Olivia Hannah Blumberg, Alexander Green, Isabelle Blumberg, Eli Blumberg, and Andrew Rasmussen. Sister of Herbert (Joyce) Weberman.

MILDRED JACOBSON. Mother of Scott R. (Roz) Jacobson, Karen Jacobson, and Stanley "Bowie" Jacobson. Grandmother of Logan Jacobson (Kevin) Most, Lacey (Elliot) Foon, Charlotte Jacobson, Emilia Jacobson, Maxwell Jacobson, Luke Jacobson and Cole Jacobson. Great-grandmother of Oakley and Brighton Most.

DOLORES & DENNIS LYNCH. Parents of Russell (Rebecca) Lynch, Kathleen (Mark) Dickey, Lori (Jim) Wenzel, and Jennifer (Steve) Rachocki. Grandparents of Catie (Tyler Staruch), Michael, Charlie, Danielle, Hailey, Sarah, Nolan, Adam, Ethan and Sam.

MARCH BIRTHDAYS

MARCH 1

Gabrielle Blau
Marjorie Federman
Sandra Hermanoff
Jerome Moss
Jo-Anne Nosan
Jason Pauli
Nadine S Rapp
Marsha Rofel
Adam Rosenberg
Sarah Shapiro
Sheldon Siegel
Dr. Michael Sills
Franklin Stewart
Steven Stone
Emunah Wedes

MARCH 2

Nancy Baron
Elizabeth Berman
Helen Christie
David Colman
Michele Davis
Dorothy Decker
Clark Engelson
William Haughey
Lee Mandell
Loree Marks-Trilling
Kenneth Posner
Harlan Simmons
Fred Yaffe

MARCH 3

Makenzie Bielfield
Merrilee Broder
Norton Delidow
Mearyl Diskin
Robert Dresner
Madison Gardner
Bridget Kravchenko
Ryan Lewis
Charlotte Mintz
Lisa Siegel
Logan Spagna
Sheryl Stoddard
Brenna Turner

MARCH 4

Emily Cetner
Dana Cohen
Connie Colman
Milton Conway
Martin Darvick
Jeffrey Frank
Jonathan Haber
Asher Isdamer

Zvi Rosenzweig
Jean Simon
Joseph Wald

MARCH 5

Lyndsay Ball
Lisa Brockman
Jennifer Fantich
Jesse Fenton
Deborah Marwil
Norma Pont
Megan Spektor
Alexander Stakits
Betty Stamler
Mark Tennenhouse

MARCH 6

Brielle Bassirpour
Drake Combs
Susan Kaplan
Sylvia Nelson
Jennifer Schoenbart
Gregory Schwartz

MARCH 7

William Floyd
Aric Klar
Marta Lazar
Michele Maloff
Wyatt Schiller

MARCH 8

Gayle Camden
Collin Dickey
Dennis Freeman
Madeleine Gerson
Michael Goldsmith
Jonathan Klein
Ira Margolis
Rebecca Segel
Roberta Weber

MARCH 9

Olivia Baru
Jackson Blau
Marley DeRoven
Gary Freeman
Tessa Grant
Myron LaBan
Michael Scher
Sarah Scher
Mark Winkelman
Michael Zonder

MARCH 10

Aaron Bass
Hannah Cardew
Ethan Cliff
Julia Fantich

Myrna Fischer
Giuliana Golden
Harriett Hollander
Adam Kessler
Margo Lee
Elizabeth Rattner
Ezra Stav
Richard Stone
Sky Thurswell
Barbara Weiss
Alexis Wolf

MARCH 11

David Blau
Shane Handelsman
Ivy Kwartowitz
Lana Lembersky
Susan Saraquse
Michelle Scavone
Harmon Tron
Joanne Welling
Elizabeth Wojtowycz

MARCH 12

Chandler Billes
Lorie Kessler
Aviva Marchione
Shayna Marchione
Alyssa Phillips
Joshua Reinicke
Joseph Sasson
Joanna Schulak
Nathan Stotland

MARCH 13

Howard Baron, Jr.
Alison Budisak
Ann Fishman
Stuart Israel
Estelle Kwartowitz
Arielle Lipman
Rachel Rapp
Benjamin Redmond
Alex Steinberg
Adam Zureick

MARCH 14

Aden Cetner
Allen Gantman
Ryan Gertner
Gaal Karp
Katie Leibhan
Deborah Morosohk
Nancy Powell
Ava Stashefsky
Kyle Stone
Seth Talmer

MARCH 15

Margaret Gantz
Lindsey Mandell
Zachary Pollak
Brooke Radner
Marjorie Sandy
Victoria Sloan
Georgia Weishaus
Bradley Zucker

MARCH 16

Irving Baron
Mark Birnhart
Ari Chekan
Elaine Greenspan
Tonja Lawrence
Amy MacWilliams

MARCH 20

Cheryl Carpenter
Samuel Kessler
Rachel London
David Miller
Jonathan Miller
Anthony Shields
Justin Wedes

MARCH 21

Ian Deutch
Jackson Harris
Karen Hull
Michael Jacoby
Jeffrey Jenks

MARCH 17

Harriet Cooper
Julie Frank
Patricia C Harris
Cooper Hutson
Cantor Rachel
Kalmowitz
Sarah Kolins
Robert Lisak
Sharon Obeler
Lauren Sandberg
Alexandra Schwartz
Emily Shaw
Jonathan Shaw
Kevin Toll

MARCH 18

Kaden Cherkasky
Seth Goldman
Shayna Goren
Elizabeth Grawi
Mitchell Greenberger
Lauren Gun
Pamela Jablonski
Elizabeth Kaner
John Kessler
Joshua Lipson
Julie Marx

Sarah Myers
David Howard Rose

MARCH 19

Ryder Alessandri
Norman Ash
Joshua Berg
Hudson Craig
Benjamin Diskin
Phillip Diskin
Gabrielle Fantich
Marlene Lipman
Daniel Mesa
Mark Rubinstein
Elyse Sutherland

MARCH 20

Cheryl Carpenter
Samuel Kessler
Rachel London
David Miller
Jonathan Miller
Anthony Shields
Justin Wedes

MARCH 21

Ian Deutch
Jackson Harris
Karen Hull
Michael Jacoby
Jeffrey Jenks
Allan Lasser
Taevon Lawrence
Karen Lee
Staci Lichterman
Jordan Marcus
Francessa Piscitelli
Darren Rosenberg
Diane Weisberg

MARCH 22

Jonathan Borenstein
Warren Frenkel
William Frenkel
Cheryl Canvasser
Kerwin
Brighton Most
Adam Robin
Joseph Rubin
Emma Sable
Mark Schwartz
Scott Sircus
Katherine Sventy
Susan Turner

MARCH 23

Margo Delidow
Joshua Epstein

Isabelle Geller
Micah Israel
Arnold Joseff
Emery Kasle
Brian Kern
Mildred Minkow
Pamela Schock
Janice Wainger
Edward Weberman
Alana Wildern
Levi Yaker

MARCH 24

Evan Cardew
Linda Greenberg
Melissa Katzman
Ezra Klar
Susan Marks-Goldsmith
Melodie Simmons
Elan Tamaroff
Jennifer Weckstein

MARCH 25

Charlotte Bortman
Laila Feldman
Raquel Howard
Stuart Michaelson
Sandra Millman
Sasha Pipia
Susan Pont
Leah Salzenstein
Trevor Schwartz
Michael Siegel
Irine Sorser
Eden Zadoff
Sasha Zadoff

MARCH 26

Elizabeth Benson
Jaime Ettinger
Erica Fox
Evan Harwood
David Miller
Max Rosenfeld
Fredrick Simon
Marla Singer
M. Madeline Weiner
Jeffrey Wolfe

MARCH 27

Denise Brown
Jodi Charnas
Ellyn Craine-Davidson
Amy Farbman
Mason Fillmore
Jaclyn Israel

Jack Kwartowitz
Gabriel Rosen
Brian Shapero
Nolan Werner
Steven Wolf

MARCH 28

James Bernstein
Susan Eilenberg
Carol Seedberg Evans
Harvey Freeman
Lindsey Goldberg
Nora May Pomish
Sheldon Plotnik
David Riger
Mark Shain
Brandon Webb

MARCH 29

Ellory Becker
Brittany Beider
Mark Canvasser
Gerald Cole
Jane Dresner
Lauren Girson
Hudson Issner
Myrle Leland
Simon Rozenzweig
Steven Scharg
Bradley Urdan

MARCH 30

Alicia Chandler
James Deutchman
Robert Dresner
Olive Kelman
Logan Most
Kelly Paulisin-Smith
Noah Sklar
June Watnick

MARCH 31

Beth Congdon
Emma Goodman
Bryce Henney
Lissa Hurwitz
Charles Jacobowitz
Maxwell Jacobson
Amanda Kalt
Michael Kent
Michelle Lame
John Lawson
Samantha Siegel
Avraham Slatkin
William Stern

MARCH ANNIVERSARIES

MARCH 2

Phyllis & Allen Gantman

MARCH 3

Leah & Harmon Tron

MARCH 6

Dana Kreis Glencer & Derrick Glencer

MARCH 7

Susan & Daniel Dickey
Laura & Myles Stern

MARCH 10

DD & Stephen Fisher
Mania & Mark Glazer

MARCH 11

Sara & Andrew Craig
Shira & Bill Good
Brenda & Sanford Passer

MARCH 16

Anna & Robert Greenstone

MARCH 17

Laura & Lawrence Lester

MARCH 20

Rita & Semyon Klein
Susie & Adam Rosenberg

MARCH 21

Helen & Howard Barron
Lindsey Fox-Wagner & Jordan Wagner

MARCH 22

Stacy & Ronald Klein
Helaine & Arthur Steuer

MARCH 23

Leslie & David Doran

MARCH 24

Wendy & Henry Abrams

MARCH 25

Mary Jo & Marc Israel

MARCH 26

Cathy & James Deutchman
Jacqueline & Earl Remer

MARCH 27

Jessica & Jeremy Brandt
Jane & Richard Schwartz
Loren & Matthew Weiner

MARCH 28

Lyndsay & Jason Ball
Karen & Alan Lowen
Shelley & Jeffrey Roberts

MARCH 29

Nancy & Richard Blieden
Sonia & Keith Pomeroy

MARCH 30

Louise & E. Todd Sable

MARCH 31

Heidi & Jay Kreindler
Mary & Richard Senter

SUNDAY, FEBRUARY 24 – SATURDAY, MARCH 2

EDWARD AJEMIAN * LAVERNE ALLEN * ADELYNE B. ARONOFF SADIE G. BACH SYLVIA BAKER ESTHER ATLAS BEHRMANN * DR. MAX BEITMAN * SARAH G. BENJAMIN * SADIE J. BING SAMUEL BINKOW BRIAN BLANK * ANNETTE BORINSTEIN * JEANNETTE SARAH	BRADFIELD JUDY CHEEK JANICE COHEN * AARON DEROF BERNARD DEUTCHMAN DR. M. KENNETH DICKSTEIN CECILE DREYER JEROME J. ETTINGER CLARA NADEL FARBER ROSE FEINBERG SELDIA FEINBERG EDGAR FENTON	EVA FRANK * NETTIE FRIEDMAN NANCY MAY GAGNER * DOROTHY GAYLORD * LOIS J. GOLDMAN * ARTHUR L. GOULSON * MORRIS GOYER KAREN GRAFF * HARRY GREENSPAN LENA GURWIN JACK GUZ * MARABEL HACKELMAN ROSALIE HARRIS	* SAMUEL HEAVENRICH * MINNIE HECHT JOANNE HENNEY * ISAAC SOLOMON JACOBS SETH L. JACOBSON * ANNE BARNA JOSPEY EVA KLINE KENNETH LIONEL KLING, JR. * ELSA KOPLOY * HENRIETTA KURTZ ROSE LAPIDES BELLE LAZAR	* FANNIE LEVENSON HARRY LEVIN JOY T. LOEB BRUCE MACWILLIAMS ANNA MALIN ALFRED A. MAY DEBBIE MCGUIRE PHILIP MINKOW RODMAN N. MYERS DR. MILTON NATHANSON * VERA NEWMAN LEROY OBELER * SUSY F. OBERFELDER	* GITEL HALEVI PERES * L.A. PERES * BERTHA PETERMAN * ANN B. POLOZKER * HERBERT RACKLIN * MAX REICH * JENNIE RESSLER * BEN ROTH * MOLLY SALZENSTEIN WESTON * MARCIA SCHILLER CAROL SCHWARTZ ROSE SCHWARTZ * BERNARD R. SIEGEL	* ROSETTA SILVERMAN MORRIS SIMON BESSIE SMITH JOHN E. STAMLER BERTHA STEIN STEINBERG ALVIN STEINMAN * MILFORD STERN * SYLVIA GORDON STONE * LEONARD STRICHARTZ * SARAH SWEETWINE SHEINA VOSPE	* SOPHIE WEINER * HENRY WESCHLER * ANNE WEXLER * ROSALYN BANOV WYMAN HARRY ZAHLER BONNIE ZELICKMAN
--	--	--	--	---	--	---	--

SUNDAY, MARCH 3 – SATURDAY, MARCH 9

* JOHN ALEXANDER * IDA ALPERT * SYLVIA BAER * MARIE BALABAN * ROSE BANKLER * LOUIS JONAS BEARMAN MARILYN BEDNARSH JOHN BEHRENDT ANNETTE BERRY JOSEPH M. BIEDERMAN	FREDERICK A. BIRD BERNICE BIRNKRAUT * GOLDIE BLANK EDWARD M. BLAU PHYLLIS BLAU IRWIN HARRY BLOCH DOROTHEA BOURKE * MARVIN BRESKIN JEROME J. ETTINGER * JOSEPH BROWN DAVID BRUDNEY * MILA CHAJES	* FRANCES DREYFUSS * WILLIAM ROBERT ELSON HENRY ENTIN * RICKY FINKELSTEIN STEVEN FISH DENNIS FORTIER * SAMUEL GERSON * MAX GLAZER * ROSE GOODFRIEND * MAURY A. GORDON	EDITH GOTTLIEB * FRED E. GREENSPAN * WILLIAM HAUSER IDA HEPNER * ROBERT P. HIRSCH * IRMA SLOMAN HIRSCHMAN * LOUIS HOFFMAN WILLIAM HOLSKIN * HELEN NELKEN JALAN ELDEN B. JAY	ANNETTE KAHN * DOROTHY KAMINS * REBECCA D. KATZ BETTY KATZMAN HERBERT KESSLER DR. RICHARD KOMMEL SOL WOLF LANDAU JOAN LEFKOWITZ MIRIAM LEWIS LIEBERMAN * JOHN Z. MERDLER	EDNA MINKIN ERZSEBET BACS MOLNAR * MINNIE L. NEWMAN TANN * JACOB PEARL MIRAH REDFIELD * JULIUS ROTHENBERG BEN RUBENS ALBERT RUBINSTEIN WENDY SABLE * ROSALIND SCHUBOT	ISSAY SHLEYPACK * RICHARD H. SIMON JESSIE KAUFMAN STERN * LT. DONALD WITTMAN TANN DAVETTA JONES THOMPSON ANTHONY TROGAN NORMAN WACHLER WALTER WALLS * ABRAHAM WEINER	HARRIET WEINGUST * EMORY WEISS * HERMINA WEISS ROBERT WERNEY DR. JAN WINKELMAN DONALD WURM MIRIAM ZACKS JACQUELINE ZIMMERMAN
---	--	---	---	--	--	--	--

SUNDAY, MARCH 10 – SATURDAY, MARCH 16

* VIRGINIA E. ADAMS * FERDINAND ALEXANDER * SAMUEL W. ALPERT * FREDA H. BEST * DR. I. IRVING BITTKER * JULIUS CASSEL * LOUIS COHN * EDNA COLMAN MARTIN COOPERMAN ELI DARVICK	WILLIAM DAVIDSON MAURICE DAVIS PRICILLA COOPER DICKMAN * HERBERT DREYFUSS * CHARLES DUNITZ * LILLIAN EPSTEIN BENJAMIN GABLOCK * HERMAN GOLANTY ROSE GOLDSTEIN ALICE KOBACKER	HARRIS MORREY HARRIS * SCHIFFRA LEIDER HENRY BERTHOLD HOMBURGER DAVID HOWARD DAVID HULL * NETTIE BYRON JACOB * FAYE W. JOSEPHSON ROSALIE KANAREK * DR. JOSEPH HENRY	KERZMAN EMANUEL KOENIGSBERG FRANCES KOPPELMAN * EDITH LEAH KRELL * DR. IRVING J. KURTZ HAROLD LANDIS * BESSIE POPKIN LANDSBERG PHILLIP LAZAR RUBEN LEIPZIG	* MOLLIE ZEITMAN LEVE ANNE RUTH LINSKY * LOUIS LOWY * SYLVAN A. MESHORER RICHARD MILLER HERBY MORGENSTERN IRVING NEWMAN * ELIZABETH ANN PAYSON STEVEN RADOM * DOROTHY REINHEIMER	MORTON JACK REMER REBECCA ROBINSON SYLVIA ROGERS * OSCAR R. ROSEN * MINNIE H. ROSENBERG MASAL "TONI" ROSENFELD ROY ROTTET ARLINE VIVIAN RUBIN * ISAAC RUBIN JEANETTE LILLIAN	SARAOUSE * JACOB SAZZMAN * BEVERLY JANE BLAU SEGAL SAM SEGAL JEAN SHAPERO * ELRICH CHARLES SHUMER * LENA RUTH SIEGEL MARY SILVERMAN ROBERT STOLLER	* GERALD R. STRAUSS SUSAN SNYDER SWIFT * RABBI M. ROBERT SYME A. RICHARD TISCHLER * MARTIN M. WEINER * SAMUEL WEXLER AUGUSTA YOUNG FAY ZAMET FLORA ZIMMERMAN * LEO J. ZUCKERMAN
--	--	---	--	--	--	--	--

SUNDAY, MARCH 17 – SATURDAY, MARCH 23

CLARA AULTCHOULER * ARCHIE BARNETT ROSE BEIGLER MILTON BERMAN RACHEL BLAIR * LILLIAN BOBMAN * LILLIAN BRODER * ANNE PEARLMAN BRONSON MARY PEARL BURDICK * FLORENCE GITLIN CAMDEN JOSEPH CAMDEN	* ABRAHAM S. COHEN * ROSE LANDAU COHEN * EDWARD J. DIZIK DR. MYRON DORFMAN * IDA DRESCHER PATRICIA LYNN DUBE LILLO FAUMAN * DONALD FISHER * MARGARET FRANKLIN FLEISCHAKER * LOUIS H. FREED GEORGE ABRAHAM FRIED	DR DONALD GALE * JOSEPH B. GAYLORD SOPHIE GOLDEN * CECILIA GOLDMAN DAVID GOLDMAN * WILLIAM GOODFRIEND ROSE HEARSH * ERNA HERZ * IRVING L. HIRSCHMAN * ELSIE D. JACOBSON MAX JASSENOFF MILDRED KABAKOV * NELLIE SANDORF KAHN	* SAMUEL BARRETT KAHN * LLOYD KAPLAN * ESTHER KATZ * MILLIE KIRSCHBAUM * HELEN MAY KOPLOY EUGENE H. KOPPLE ABIGAIL ROVNER KOTT * SADIE M. KRANDALL LARRY KUSHKIN * JACK O. LEFTON * SIDNEY LECHNER WALTER LEUBUSCHER MAYME LEVINE	MILTON H. LONDON * BENARD L. MAAS JR. * NANCY JEAN MEYER * MAX NEUMAN CLARA KLEIN NOLAN HELEN OZER ELIZABETH PENCHASSOFF * FREDA W. PORTNOY ELIZABETH RAZDOLSKY * GOLDIE LEIDER REICHSTEIN * ANNA RESSLER	* HERBERT D. ROBINSON * MITCHELL B. ROBINSON ROBERT ROSEN * BUD SCHILLER * HAROLD GILBERT SCHREIBER * BETTY H. SCHUBOT MORTON SHAPIRO SIDNEY OWEN SIEGAN SIDNEY SILVER R. MARGARET "PEGGY" SIMON RICHARD SIMON	* MAX SMITT * AARON SNYDER * MARY SOLOMON * MAX SOLOMON * ROSE SPARR WILLIAM H. STEINHARDT ADELINE STEINMAN * MAE BENISON STEINMAN JOYCE ANNETTE TATCHIO * JACK J. WAINGER * MILDRED WEISS	* EMANUEL I. WINKELMAN * BENJAMIN SELMA WINSTON * FRANK J. WINTON GOLDIE WISEMAN
--	---	---	---	---	--	--	---

SUNDAY, MARCH 24 – SATURDAY, MARCH 30

* A. HARRY ADLER * MILTON M. ALEXANDER * LOUIS ARNKOFF ESAR BACHMAN SYLVIA BARR ROBERT STANLEY BENSON * ELSA KOPPLE BERGER * JOSEPH BERMAN CELIA BESBRIS	* MARK H. BIRNKRAUT * ALBERT BLATNIKOFF DR. GEORGE CHARNAS JUDITH CHASE FELICE CHESNO DR. LEWIS COLE LAWRENCE COVILLE EMILY EDWARDS * MOE EHRLICH	* CAROL ELIZABETH ELLMANN SELMA FISHER * DR. JOSEPH L. FORBES * ALEX FRANK ROSALIE FRIEDMAN * NOLA W. GOLDMAN HAZEL DEYOUNG GRAFF	FANNIE MARCUS GUTTENBERG MERLE HARRIS * WILLIAM M. HARRIS DAVID HAZAN * ARTHUR HIRSCH * LENA HOFFMAN THERESA HOLLANDER DAVID HUBERT HERBERT ISNER	SIDNEY ISRAEL MAXWELL R. KLUGERMAN * JACOB KOSITCHEK * FLORA KERNER KOVAN MARIE LANNON ELAINE LESSER * ABRAHAM "AL" LEVITT EDWIN LIEBERFARB EVELYN LOWEN	SEYMOUR LOWEN * FLORENCE METZ * LAWRENCE J. MICHELSON * H. ROY MILLER MOLLY MILLER * LAWRENCE NEDELMAN PAUL PACKARD * HYMAN PILCHIK RACHEL PLUDWINSKI	JOHN HAROLD REDFIELD MILTON RESNICK * ANNE ROBERTS ALTON ROHAN * RAE RUBIN * SOL SAPPERSTEIN SANDRA JANE SCHWARTZ * BONNIE LYNN SHERR	* MARY SIDERMAN * JOSEPH SIEGEL * IDA SILVERMAN IRVING SIPORIN RENEE STONE BENJAMIN TAUBER * DOROTHY BARNETT THAL FAY ZISHOLZ
---	---	---	--	---	--	--	---

SUNDAY, MARCH 31 – SATURDAY, APRIL 6

* BELLE MEISNER ALEXANDER DR. E. BRYCE ALPERN * ANNE S. ALVIN * ETHEL BEARMAN ARNOLD BERG FRANK BERMAN GERTRUDE BURSTON ANNE CHANSON COHEN REBA COOPER	ROSELLA COOPERMAN * PAUL CORBY ROSE CROOGLOFF EUGENE M. CURTIS * LOTTIE DEYOUNG JO ANN ENGELSON WILLIAM ENGELSON * LOUIS M. ESTON * EARL I. FENWICK JACOB FREEMAN * DOLLY FRIEDMAN	* MAX GERSTMAN * JOSEPH GESELS * ANNA L. GOLDBERG HELEN GOLDIN * MORTON GOTTESMAN ISAAC GRUSKIN ANNETTE HAMBURGER * DR PEARL HAUSER * BEATRICE HORWITZ * REVA JACOB * LOIS JACOBOWITZ	WERNER J. KAPLAN DOROTHY KATZ JULIUS KATZ TOBY KAUFMAN * HELEN KULTER HAROLD J. KUSHNER DR. ISAAC KUSHNER JOSEPH LAPIDES MORRIS LAZAR * HELENE LENZNER BLANCHE LEVINE	RUTH LEVINSON * DORA GERSON LEVY STANLEY MARTIN LEWIS * JACK MACWILLIAMS ARTHUR MARCUS * GEORGE MASKIN SYLVIA MAY ESTELLE MELLEN BERNARD MELLITZ JONATHAN	MICHELSON * PETER A. MILLER EARLE MOSTYN * ROBERT B. NOVITZ HAROLD PLOTNIK SYLVIA POLLACK LOUIS G. REDSTONE SYLVIA ROBINS * EDWARD ROSENBERG * SYLVIA SAMUELS MILDRED A. SAND	* MAX M. SAZZMAN * SARAH SAZZMAN ARTHUR SCHOTT * ROSETTA SCHREIBER HENRY SCHWARTZ MORRIS SHILLMAN * HELEN NALVEN SOTT * JACOB STIGLITZ * NEDRA STRASNER * BEATRICE STRICHARTZ * EMANUEL SWEETWINE	BESSIE UDAY * BENJAMIN WAGENHEIM * MARQUERITE K. WALLACH * EVELYNE E. WEINER * JOSEPH WEINER * JULIUS YOUNG * JULIE ZOHOTT
--	--	---	---	---	---	---	--

MARCH 2019

01 FRI 9:15 AM Temple Tots
7:00 PM Music Shabbat *oneg* sponsored by Dr. Sheldon Stern

02 SAT 9:15 AM TBE Torah Study
10:30 AM Shabbat morning services

03 SUN 8:30 AM B'nai Mitzvah Club
9:00 AM TBE Sunday Morning Breakfast
9:30 AM MASA
Kid-ish Event
Sunday Minyan
10:00 AM Brotherhood Board Meeting
Sisterhood Board Meeting
4:00 PM World Sabbath @ The Islamic House of Wisdom

04 MON 6:00 PM *Masa* Teens

05 TUE 7:00 PM TBE Choir Rehearsal

06 WED 9:30 AM Torah Study
10:30 AM Hebrew Class
4:30 PM B'nai Mitzvah Club
6:30 PM Intro to Judaism
7:00 PM Adult B'nai Mitzvah

07 THU 7:00 PM Glazer Institute

08 FRI 9:15 AM Temple Tots
7:00 PM Shabbat Service + Quinquennial Anniversaries

09 SAT 9:15 AM TBE Torah Study
10:30 AM Shabbat morning services w/ Mattan Torah

10 SUN 8:30 AM B'nai Mitzvah Club
9:00 AM Sunday Morning Breakfast
9:30 AM MASA
Sunday Minyan
Brotherhood Speaker
10:00 AM jbaby! BASH
Bubbie and Zaydie Temple Tots
11:30 AM Youth Choir Rehearsal

11 MON 6:00 PM *Masa* Teens
6:30 PM ECC Policy Committee Meeting

12 TUE 4:30 PM Executive Committee Mtg
7:00 PM TBE Choir Rehearsal

13 WED 9:30 AM Torah Study
10:30 AM Hebrew Class
4:30 PM B'nai Mitzvah Club
6:30 PM Intro to Judaism
7:00 PM Adult B'nai Mitzvah

14 THU 10:00 AM Beth Elders Meeting

15 FRI 9:15 AM Temple Tots
7:00 PM Shabbat in the Round

16 SAT 9:15 AM TBE Torah Study
9:45 AM Choir Call
10:30 AM Sisterhood Shabbat w/ Choir
12:30 PM Nosh and Knowledge

17 SUN 8:30 AM B'nai Mitzvah Club
9:00 AM TBE Sunday Morning Breakfast
9:30 AM MASA
Sunday Minyan
11:15 AM Megilah Reading w/ Youth Choir
NOON Purim Carnival

18 MON 6:00 PM *Masa* Teens

19 TUE 7:00 PM TBE Choir Rehearsal

20 WED 9:30 AM Torah Study
10:30 AM Hebrew Class
4:30 PM B'nai Mitzvah Club
6:30 PM Intro to Judaism
7:00 PM Adult Purim Party

21 THU 7:15 PM Board of Trustees Mtg

22 FRI 9:00 AM ECC Purim
9:15 AM Temple Tots
5:30 PM Kid-ish Club Purim Party
7:00 PM Shabbat Service

23 SAT 9:15 AM TBE Torah Study
10:30 AM Shabbat morning services and B/M of Matthew Gurwin

24 SUN AIPAC Policy Conference
8:30 AM B'nai Mitzvah Club
9:00 AM TBE Sunday Morning Breakfast
9:30 AM MASA
Sunday Minyan
10:30 AM Masoret

25 MON AIPAC Policy Conference
6:00 PM *Masa* Teens

26 TUE AIPAC Policy Conference
7:00 PM Education Committee Mtg.

27 WED 9:30 AM Torah Study
10:30 AM Hebrew Class
4:30 PM B'nai Mitzvah Club
5:00 PM Knitting, Crafts and Laughs
6:30 PM Intro to Judaism
7:00 PM Adult B'nai Mitzvah
FedED Program

28 THU 1:00 PM Movies & Munchies

29 FRI 9:15 AM Temple Tots
7:00 PM ECC PTO Meeting
Shabbat Service

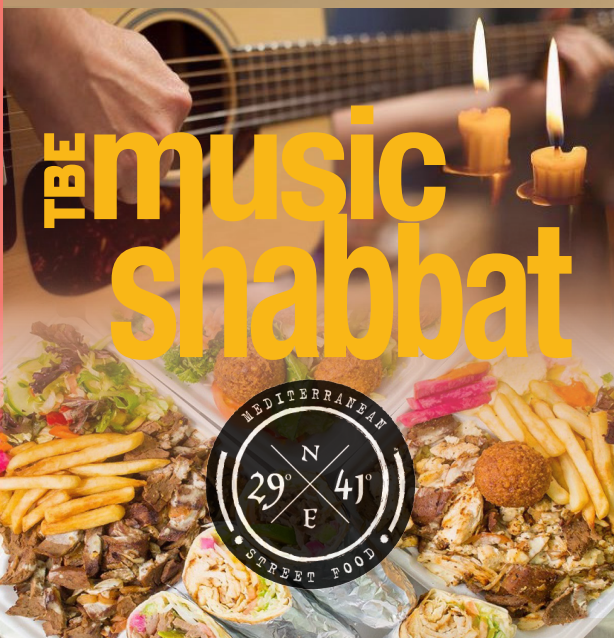
30 SAT 9:15 AM TBE Torah Study
10:30 AM Shabbat Service with Alicia Chandler's Affirmation of Bat Mitzvah

31 SUN 9:30 AM Sunday Minyan
10:00 AM Limmud Michigan @ JCC

March

S	M	T	W	T	F	S
					1	2
3	4	5	6	7	8	9
10	11	12	13	14	15	16
17	18	19	20	21	22	23
24	25	26	27	28	29	30
31						

HIGH ENERGY, SPIRITUAL, AND THOUGHT-PROVOKING SERVICE



FRIDAY, MARCH 1 @ 7 PM

Featuring tastes of the Mediterranean and the Middle East from 2941 Street Food.

**ONEG SPONSORED BY
DR. SHELDON STERN.**

**Yizkor and Plaque Dedication
Friday, April 26 @ 10:30 AM**

Join us in worship as we remember our departed.



**MIRIAM S. GOREN
MERWIN K. GROSBERG
DOLORES J. LAX
FRED LAX
IVAN M. SCHOLNICK
MILDRED WEISS**



SATURDAY, MARCH 23 BAR MITZVAH OF MATTHEW RYAN GURWIN

Matthew is in 7th grade at Clifford Smart Middle School. He enjoys playing football for the Lakes Area Hawks and umpiring baseball for Commerce Little League. In his free time Matt plays video games with his friends, plays board games with his family, and loves to read suspense novels. He really enjoys helping out younger children and has taken part in "Game Night at the Shelter" with the Caleb White Project. For his Mitzvah Project, Matt is helping with the "Impacting by Backpacking" project supported by the Caleb White Project. He is collecting school supplies and backpacks that will be given to students in need prior to the start of school in the fall. Matt is the son of Jackie and Brian Gurwin, the brother of Kimberly Gurwin, and the grandson of Howard and the late Jill Gurwin and Sara and Dave Buttrick.



SATURDAY, MARCH 30 AFFIRMATION OF BAT MITZVAH ALICIA CHANDLER

In celebration of her 40th birthday, Alicia Chandler will be reading from the Torah as a Bat Mitzvah. While she is about the same height as she was at 13, in the intervening years she has received multiple degrees, married Jeff Chandler, given birth to two beautiful children, developed her career as a health care attorney, and served in several Jewish leadership positions including her current presidency of the Jewish Community Relations Council/AJC.

FRIDAY, MARCH 1

7:00 PM Music Shabbat
oneg sponsored by Dr. Sheldon Stern

SATURDAY, MARCH 2

9:15 AM TBE Torah Study
10:30 AM Shabbat morning services
Torah Reader: William Dash

FRIDAY, MARCH 8

7:00 PM Shabbat Service + Quinquennial
Anniversaries

SATURDAY, MARCH 9

9:15 AM TBE Torah Study
10:30 AM Shabbat morning services w/
Mattan Torah
Torah Reader: Debbie Morosohk

FRIDAY, MARCH 15

9:15 AM Temple Tots
7:00 PM Shabbat in the Round

SATURDAY, MARCH 16

9:15 AM TBE Torah Study
10:30 AM Sisterhood Shabbat w/ Choir
12:30 PM Nosh and Knowledge

FRIDAY, MARCH 22

7:00 PM Shabbat Service

SATURDAY, MARCH 23

9:15 AM TBE Torah Study
10:30 AM Shabbat morning services and
B/M of Matthew Gurwin

FRIDAY, MARCH 29

7:00 PM Shabbat Service

SATURDAY, MARCH 30

9:15 AM TBE Torah Study
10:30 AM Shabbat Service with
Alicia Chandler's Affirmation of
Bat Mitzvah

CLERGY

Mark Miller, Senior Rabbi
Rachel Gottlieb Kalmowitz, Cantor
Megan Brudney, Assistant Rabbi
Daniel B. Syme, Rabbi Emeritus

STAFF

Daniel Mesa, Executive Director
Deborah Morosohk, RJE, Director of Education
Claire Danaher, Chief Financial Officer
Susie Weiner, Director of Early Childhood Center
Danielle Gordon, Program Director
Lindsey Fox-Wagner, Communications Director
Rachel Rudman, Director of Member Engagement
Scott Lowen, Director of Youth Engagement
Laura Williams, Curator
Alan Lowen, B'nai Mitzvah Coordinator
Jim Gabriel, Accompanist
Allan N. Friant, Sr., Building Superintendent
Joe Winter, Cemetery Superintendent
Morris Collins, Reception/Security
Thomas Jablonski, Executive Director Emeritus

EXECUTIVE COMMITTEE

Liz Modell, President
Lorie Kessler, Vice President
Maxine Lievois, Vice President
Warren Rose, Vice President
Alex Stotland, Vice President
Adam M. Lutz, Treasurer
Rochelle Nelson, Secretary
Jordon Wertheimer, Immediate Past President
E. Todd Sable, Member-at-Large

AFFILIATES

Elaine Brockman, Beth Elders
Bruce Plisner, Brotherhood
Cindy Bolokofsky and Karen Lowen, Sisterhood
Alecia Rice, The Kid-ish Club
Ari Richardson, Beth El Temple Youth (BET)
Natalie Shirley, K-5 K'hilah Club



TEMPLE
BETH EL

7400 TELEGRAPH ROAD
BLOOMFIELD HILLS, MI 48301
WWW.TBEONLINE.ORG

Non-Profit Org.
U.S. Postage
PAID
Southfield, MI
Permit No. 498

NEW!
DETAILS PG. 13

Save a Life



Sunday

SUNDAY, APRIL 28 • 9:00 AM - 1:00 PM

IN PARTNERSHIP WITH



TEMPLE
BETH EL

