

# the Bulletin



## HAMILTON

## Purim Spiel

## Adult Purim Festival

SATURDAY, MARCH 11 7 - 9 PM

*Come have a drink (or two), a tasty nosh, and celebrate Purim with great music, good friends, and a Hamilton Purim spiel.*

RSVP to Danielle Gordon at [dgordon@tbeonline.org](mailto:dgordon@tbeonline.org) or 248.851.1100.



## Weekends at TBE

*High-energy, spiritual, and thought-provoking service.*



**TBE music shabbat**

**FRIDAY, MARCH 3 6:00 PM**

FEATURING **Zingerman's** DELICATESSEN

ENJOY ...

Latke Triangles	Savory Italian Kisses
Pimento Cheese Parti	Assorted Deli Sandwiches



**SUNDAY, MARCH 26 10:00 – 11:00 AM**

For more information, contact Debbie Morosohk,  
at [dmorosohk@tbeonline.org](mailto:dmorosohk@tbeonline.org) or 248.851.1100.



Temple Beth El, U.S.P.S. 075360 is published monthly. Temple Beth El, 7400 Telegraph Road, Bloomfield Hills MI. Periodicals postage paid at Pontiac, Michigan. Postmaster send address change to: Temple Beth El, 7400 Telegraph Road, Bloomfield Hills, MI 48301



*Creating a welcoming Jewish community for families with young children.*

**Join Us For Two Great Programs!**

**Tot Shabbat**



*A fun, musical Saturday morning experience.*

**Saturday, March 4**  
**9:30am in the Alpert Room**

**GRAB YOUR GRAGERS!**  
**Purim Small Fri Shabbat**



*A family service of singing and prayers followed by a kid-friendly dinner and dessert!*

**Friday, March 10**  
**5:30 PM**

Dinner \$36 per family, RSVP by March 3 to  
Rabbi Brudney at [mbrudney@tbeonline.org](mailto:mbrudney@tbeonline.org).



# YOUR TEMPLE *working* FOR YOU

Temple Beth El has 166 years of history, nearly 1,100 member families, and a calendar packed with opportunities to connect, learn, celebrate, and volunteer. But just as important, our Temple is here to provide resources, guidance, rituals, and spiritual counseling for a range of important moments throughout your lifetime. Each month, this column will introduce you to another aspect of what Temple has to offer, with specifics about how to take advantage of your membership.

One of life's utmost joys is the birth of a new baby, and at Temple, we are eager to help you celebrate! As soon as you let us know that your baby has been born, we will certainly publicize the occasion (if you choose), and you may find a basket of goodies on your doorstep from our Caring Community. But there is much more.

A bris for boys, or a "brit-bat" for girls, can be a beautiful way to welcome your little one into the world. It is a time to celebrate with family and friends, bless your child, give them a Hebrew name, and take part in the lovely ritual of welcoming them into the Jewish covenant. These ceremonies can be done at Temple, your home, or just about any location that would be comfortable. And if you are not interested in a full ceremony, parents often bring a new child to Temple during a Friday night or Saturday morning service, to receive a special blessing on the bimah in front of loved ones and the community.

Whatever feels right to you, our rabbis and cantor are prepared. Any one of them would be happy to help celebrate this incredible moment with your family ... just contact them at the Temple by calling or emailing Laura Lucassian at [llucassian@tbeonline.org](mailto:llucassian@tbeonline.org) or 248.851.1100.



## Temple Highlights

### LOIS SHAEVSKY ... *A Pillar of Vibrancy*

Temple member Lois Shaevsky was honored by the Birmingham Community House January 28, 2017. She was among seven community volunteers cited as "Pillars of Vibrancy" in the categories of Education, Culture, Wellness, and Philanthropy.

Lois Shaevsky credits her parents for instilling in her the value of caring for others. They taught by example that it was important not only to contribute one's own funds, time and effort, but also to persuade others in the community to participate financially and personally, to meet community needs.

Maybe this is why several Oakland University publications have referred to Lois as the "Queen of Fundraising" and as "Rolodex Diva – The Networkers Shall Inherit the Earth."



# CELEBRATE SHABBAT

## Saturday, March 18

WITH THE  
Women of  
Temple Beth El  
AND STAY FOR  
**NOSH AND KNOWLEDGE**

WITH RABBI MARK MILLER

Rabbi Miller will lead a stimulating discussion on  
**Putting Ourselves Into the Story of Passover**

**SHABBAT SERVICE 10:30 AM**  
**NOSH AND KNOWLEDGE 12:30 PM**

Lunch - \$18/person  
RSVP to Nancy Fortier at 248.495.5013



## Mazel Tov

*We are happy to announce the arrival of*

**BRODY LEV VIEDER**

*Born February 11, 2017*

Son of Heather & Jeff Vieder, and the little brother of Paige. Brody is the grandson of Cheryl & Dr. Ronald Kerwin, Debbie & Alberto Katan, and Gayla & Mark Vieder, great-grandson of Robert Canvasser.

*- and -*

**EZRA SAX ROSENFELD KYSEL**

*Born February 12, 2017*

Son of Dr. Bryn Rosenfeld & Ian Kysel. Ezra is the grandson of Janelle McCammon & Dr. Raymond Rosenfeld, and Kristine & Paul Kysel.



# Upcoming Events

SAVE THE DATE FOR THE BETH EL

## family SEDER

TUESDAY, APRIL 11 6PM

*Dinner by Cutting Edge Cuisine*

- DETAILS TO FOLLOW -

\$47 per adult, \$30 per child ages 4-12,  
children 3 and under are free.

REGISTER BEFORE MARCH 22 AND SAVE \$5 PER PERSON.

Advanced registration to 248.851.1100 or  
dgordon@tbeonline.org by April 3 is required.

CUTTING EDGE  
C U I S I N E

Order Deadline: Tuesday, April 4  
Order Pick-up: Monday, April 10

### Passover Carry Out Menu

Order Today!  
248.865.0629

#### Seder Essentials

Gefilte Fish	\$4.50 each	Chicken Soup	\$8 quart
Chopped Liver	\$11 pound	Matzo Balls	\$1.50 each
Charoset	\$9 quart		

#### Seder Dinner

Braised Beef Brisket	\$15 pound
Roasted Turkey Breast	\$14 pound


#### SIDES FEEDS APPROXIMATELY 10

Herb & Garlic Roasted Yukon Gold Potatoes	\$32
Potato Kugel	\$30
Orange, Cinnamon, & Vanilla Glazed Sweet Potatoes	\$32
Sweetened Matzo Kugel	\$32
Roasted Brussel Sprouts & Onions	\$30

#### Dessert

Coconut Lime Macaroons	\$7 dozen
Matzo Toffee	\$12 bag
Chocolate Chip Mandelbread	\$12 dozen
Cinnamon Pecan Mandelbread	\$12 dozen
Fudge Brownies	\$14 dozen

## Save the Date!




# EIGHTEENTH ANNUAL World Sabbath

An Interfaith Experience of  
Music, Dance and Prayer:  
Seeking to build a world of tolerance,  
justice, faithfulness, and peace.


**Sunday, March 5, 2017**  
**Service 4:00 – 5:30pm**  
**Afterglow to follow**

**Temple Beth El**  
7400 Telegraph Rd, Bloomfield Hills, MI 48301

Celebrate our "children of peace" and  
the religious diversity of metro Detroit!



**2017  
World Sabbath  
Peacemaker  
Awardee**  
Beverly Brun,  
In loving memory of  
Nathan Park United  
Methodist Church,  
Farmington Hills, MI



For more info or if you are planning to attend, visit [www.worldsabbath.org](http://www.worldsabbath.org) or  
contact Gail Katz at [gailkatz@comcast.net](mailto:gailkatz@comcast.net) or 248-978-6664.

## BITES & BOOKS

**MARCH 27**

**AM Session: 10 AM PM Session: 7 PM**



### Seven Blessings

by Ruchama King

The closed, secret world of matchmaking in contemporary Israel provides the titillating pivot for a story of uncommon proportions. Ruchama King's, *Seven Blessings* maps out the complicated lives of five expatriate women and men whose search for a soul mate, in many ways, mirrors their search for God. Facilitated by Rabbi Megan Brudney.



Debbie Morosohk  
[dmorosohk@tbeonline.org](mailto:dmorosohk@tbeonline.org)  
or 248.851.1100

The 5 book series is \$25.  
Drop-in fee: \$10/per session.

## Upcoming Events

SUNDAY MORNING BREAKFAST SPEAKER | GERALD S. COLE, PhD. | SUNDAY, MARCH 19 | 9:30 AM

### Experiencing China as a Scientist and a Tourist



You may be aware of Jerry's service as past Brotherhood President and long-time manager of the Sunday Morning Breakfast crew. However, you will probably be surprised to learn about his distinguished scientific background.

An in-demand international expert in the use of magnesium and other lightweight materials in automotive and other applications, his career has taken him to countries around the globe including France, Israel and Australia, in addition to China, Canada and Mexico.

Jerry's 37-year career with Ford Motor Company included spearheading overall vehicle weight reduction using magnesium,

aluminum, and composites, while supervising two Ford research laboratories. Since retiring from Ford, Jerry has founded two companies and consulted extensively. He has published 170 papers and nine patents, and is an Adjunct Professor in materials science, metallurgy, engineering and manufacturing at five universities worldwide, including Chongqing University in China, where he managed a multi-year GM research program.

Don't miss this fascinating discussion and photo presentation from Jerry's (over 2 decades) of experiences with China. Come early, and enjoy the Sunday Morning Breakfast at 9:00 AM before Jerry's presentation.

FREE OF CHARGE

## TBE SUNDAY MORNING BREAKFAST



Breakfast by Brotherhood



Join us!

BAGEL & BEVERAGE \$2

FULL BREAKFAST \$3

9:00 AM in Handleman Hall when Religious School is in session.

JOIN OUR PARTNER, THE INTERFAITH LEADERSHIP COUNCIL

## Exploring our Religious Landscapes

Immersive Experiences in Religion and Culture for Adults:

### *Abrahamic Faiths*

Join us in uncovering our shared faith values as we explore the sacred spaces, texts and traditions of those within our metropolitan Detroit community!

#### *Judaism*

Temple Beth El: Wednesday, March 29, 6 – 9pm

#### *Christianity- African American Baptist*

Greater New Mt. Moriah Missionary Baptist Church: Thursday, April 27, 6 – 9pm

#### *Islam*

Islamic Association of Greater Detroit (IAGD): Wednesday, May 17, 6 – 9pm

#### *Baha'i*

Farmington Library: Thursday, June 8, 5:30 – 8:30pm

To register please visit our homepage at [www.detroitinterfaithcouncil.com](http://www.detroitinterfaithcouncil.com)



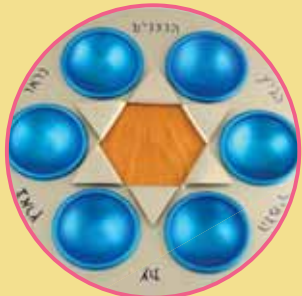
## Women of Temple Beth El

Purchase Your  
Gragers for Purim!

### Judaica Gift Shop

Passover is just around the corner...check out our renovated store, sparkling with an exciting full selection of seder plates, plagues, Elijah and Miriam cups, plus gifts for all occasions.

*Stop and Shop!*  
WE HAVE EVERYTHING YOU  
NEED FOR PASSOVER.



WOMEN  
of  
TEMPLE BETH EL  
JUDAICA  
GIFT SHOP HOURS

Sunday 9:00 AM - 12:30 PM  
Tuesday & Wednesday  
10:00 AM - 2:00 PM

FOR AN APPOINTMENT CONTACT  
Cindy Bolokofsky at  
248.431.8536.

JOIN THE WOMEN OF TBE FOR THIS  
FEATURE-LENGTH DOCUMENTARY FILM

## BREAK THE CHAIN



THURSDAY, MARCH 30  
7:00 PM TEMPLE BETH EL

7400 Telegraph Road, Bloomfield Hills, MI 48301

Post Screening Q&A Session with Experts  
Dessert Reception to Follow  
*Not Recommended for Children Under 13*

*BREAK THE CHAIN* is a feature-length documentary film that addresses the often hidden-in-plain-sight issue of Human Trafficking within Michigan communities and the United States.

The film chronicles two survivors of Human Trafficking – providing a detailed look at how trafficking goes unnoticed within our backyards. Accompanying the stories of these survivors are nearly 20 interviews with researchers, Senators, non-profit organizations, legal service agencies, law enforcement officers and several artists actively working to raise awareness for this global issue.

Sanctum House is a home for female adult survivors of human trafficking. Its mission is to provide a sanctuary for these women survivors and to empower them with the life-skills they need in order to achieve a sustainable and independent lifestyle.

RSVP ONLINE at [WWW.TBEONLINE.ORG](http://WWW.TBEONLINE.ORG) by March 27.  
For questions, contact Danielle Gordon  
at 248.851.1100



Generously sponsored by:  
The Women of Temple Beth El for Sanctum House



[BREAKTHECHAINFILM.COM](http://BREAKTHECHAINFILM.COM)



DANIELLE'S D'VARIM



## TBE's Giving Tree

MARCH COLLECTION ORGANIZERS ARE ...

### TBE Religious School is Collecting Children's Books for Bookstock

Bookstock, is a community service project through which donations of books and media continue to provide enjoyment and knowledge.

Proceeds from the sale support education and literacy projects in the Detroit metropolitan area and beyond.

Please bring gently used children's books to Beth El and we'll deliver them to the drop-off point.

*Giving Tree collections can be dropped off in the box found in the Slotkin Foyer of Temple Beth El.*

## THE POWER OF A Question

*"What's another reason  
you want to do this?"*

The Director of Internships at Northwestern Memorial Hospital stared at me with an intensity I had never felt before. I sensed the redness creeping up my cheeks and spreading onto my neck. Glancing around the room, I awkwardly searched for an answer, for something to say, but the truth was that I didn't have another reason. I sheepishly replied, "I don't know." As I walked out of the hospital, Chicago felt less promising than it had earlier that day. After calling my mom, I called the University of Loyola's Office of the Registrar and withdrew myself from the Social Work Program.

Looking back, I could have said I didn't need another reason to want to work as an intern in oncology at Northwestern, that my dad's death from pancreatic cancer was enough of a reason to become a medical social worker. But hindsight is 20/20, and the 23-year-old me thought I should have more reasons. I spent the next three years searching for a way to overcome those feelings of defeat, and finally found a sense of accomplishment when I completed a different master's program in a different city, ultimately leading to a new career journey. And it all started with a question.

March 14 is International Ask a Question Day. It is also Albert Einstein's birthday. Einstein said, "The important thing is not to stop questioning". Reasons to ask questions, according to Dr. Marilee Adams of the Inquiry Institute, include gathering information, learning and teaching, challenging assumptions, reflecting, resolving conflicts, as well as building and maintaining relationships.

I challenge you to ask a question - to yourself, to another member, or even one of our Temple staff! We here at Temple always want to keep the doors of communication open and since a question not asked is a door unopened... ask away!

#TBEintheD

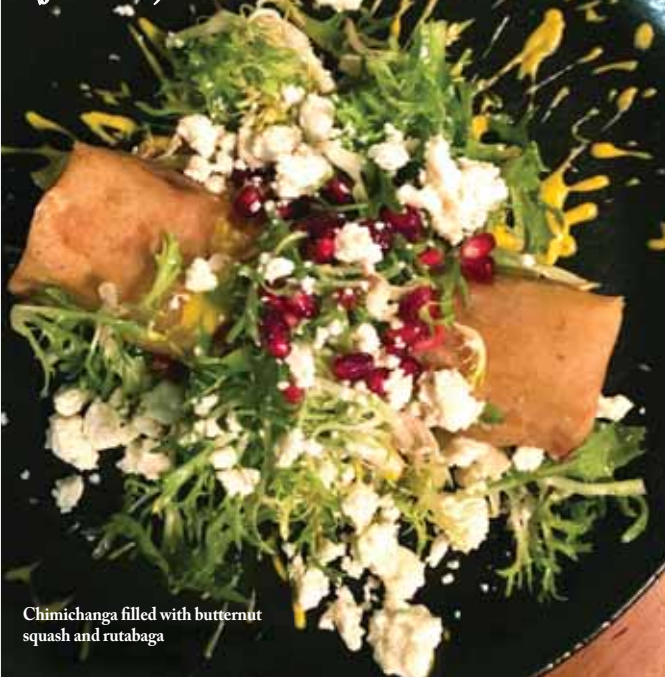
Danielle Gordon, Program Director  
[dgordon@tbeonline.org](mailto:dgordon@tbeonline.org)





## Regional Cuisine and Good Service

by 24AteDetroit  
(Jorin Rubin)



Chimichanga filled with butternut squash and rutabaga

I have enjoyed Chartreuse Kitchen ever since it opened in 2015. It is one of the first and best of the new wave restaurants in the D, so I was excited to go back. Aside from outstanding food, this cool, chic restaurant is one of the most user friendly eateries in Detroit. It's on Kirby and Woodward, in the historic Park-Shelton building, with free garage parking in the building structure (entrance on Woodward). Chartreuse takes and honors reservations. Reliable and consistent, Chartreuse has never let me down. This night getting there wasn't easy because M-10 was backed up. My husband and I turned on each other as traffic crawled at a snail's pace. I imagined losing my reservation and having to fight the 20-year old host who'd give me a wan, patronizing smile while explaining the hopelessness of the situation before banishing me to a coney island (I guess a few coneyes at Lafayette wouldn't have been a total loss).

After passing a car in flames in the middle lane of M-10 and feeling the intense heat of the burning wreck as we drove on the shoulder around it, we made it to Chartreuse and enjoyed a fantastic meal. We loved the house specialty - twice cooked egg, Great Lakes whitefish, fried oysters and a chimichanga filled with butternut squash and rutabaga. Despite a close encounter with fire, we forged ahead because, for a good meal, we are willing to risk it all.

Follow me on: **Instagram**, [www.instagram.com/24atedetroit](http://www.instagram.com/24atedetroit)



24AteDetroit Restaurant Blog  
[www.24AteDetroit.com](http://www.24AteDetroit.com)

If you have feedback or ideas, please contact Danielle Gordon at [dgordon@tbeonline.org](mailto:dgordon@tbeonline.org).

## TBE SOUP KITCHEN INITIATIVE

Open to all TBE 7th-12th graders and their families. Participants may come as many times as they would like and students can earn community service hours.

RSVP to Joey Unger at  
[junger@tbeonline.org](mailto:junger@tbeonline.org) or  
at 248.851.1100.

*Make Tikkun Olam, repair of the world, an ongoing part of your family's Jewish life.*

TBE's soup kitchen initiative is a monthly opportunity for TBE teen families to volunteer to help feed the hungry at the Detroit Orthodox Outreach soup kitchen.

CARPOOL LEAVING TEMPLE AT NOON RETURNING BY 3:00 PM

**SUNDAY, MARCH 5**

FUTURE DATES: May 21 and June 4



## Our Commitment to Judaism

# Announcing TBE's next Journey to Israel!

Join Rabbi Miller and his family for a life-changing opportunity to tour some of the world's most ancient and holy sites, while enjoying the incredible food, cutting-edge technology, and rousing stories of modern-day Israel. Our beautiful homeland remains an adventure to fill your senses and your spirit - it will surprise you and it will inspire you ... all while having the time of your life!

Contact  
Laura Lucassian at  
[llucassian@tbeonline.org](mailto:llucassian@tbeonline.org)  
or 248.851.1100 for  
itinerary and prices.

## DECEMBER 20 - 31, 2017

AIPAC Policy Conference 2017

## COME TOGETHER

March 26-28



Join Rabbi Mark Miller, Cantor Rachel Gottlieb Kalmowitz, and fellow members of Temple Beth El in our nation's capital for three powerful days that will impact the vital U.S.-Israel relationship.

Gather in Washington, D.C. with participants for the nation's largest pro-Israel conference.

Meet friends from across the country, listen to some of the world's top political and intellectual speakers.

Confer with Michigan's members of Congress in order to advocate for a strong American-Israeli relationship.

**Expand your experience by joining us for the pre-conference Shabbaton!**

The Shabbaton is a pre-conference educational seminar available exclusively for Policy Conference delegates. On Friday and Saturday, March 24 & 25, we will host engaging in-depth discussions about the U.S.-Israel relationship in a restful and respectful Shabbat environment.

For more information about Temple Beth El's delegation, contact Laura in the Rabbis' Study at [llucassian@tbeonline.org](mailto:llucassian@tbeonline.org) or 248.851.1100.

**Register Today!**

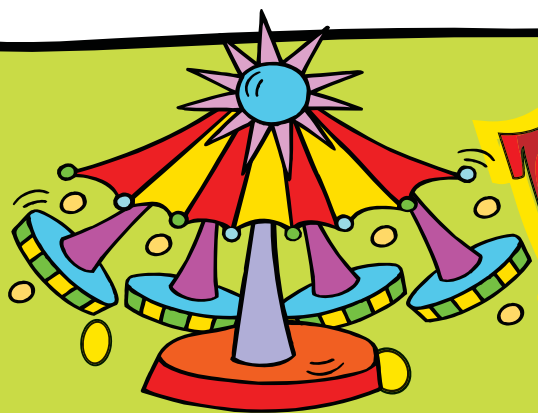
Contact Zach Pellish at 312.253.8966 or [zpellish@aipac.org](mailto:zpellish@aipac.org).



# 75th Annual Glazer Institute on Judaism AN INTERFAITH TRADITION SINCE 1943

Nearly 200 people gathered at TBE recently for the 75th annual Glazer Institute, the longest-running interfaith institute in the nation. Participants from a multitude of ethnic and faith backgrounds were treated to a dazzling talk by internationally-renowned Rabbi David Wolpe, who discussed the Jewish context for building a stronger interfaith community. Participants also heard prayers from Imam Almasmari of the Muslim Unity Center and Rev. Bill Danaher from Christ Church Cranbrook, and spent time interacting with new friends and singing together with Cantor Gottlieb Kalmowitz. Please go to our website ([www.tbeonline.org](http://www.tbeonline.org)) to see Rabbi Wolpe's full presentation, more photos, and copies of congratulatory letters from Governor Snyder, Senators Stabenow and Peters, and Representative Sander Levin.





# PURIM CARNIVAL

Please support BETY (Beth El Temple Youth) by becoming a Purim Carnival Sponsor.

Funds raised will go to support BETY and our Youth Programs.

Sponsors will be recognized in the Bulletin. Our thanks to Women of TBE for serving as the major underwriter of the Carnival.

### Sponsorships:

Game Booths: \$75	Bull Ride: \$400	Prizes: \$750
Inflatables: \$200	Laser Tag: \$500	Donation \$_____

### SPONSORSHIP FORM

Name \_\_\_\_\_

I/we wish to sponsor: \_\_\_\_\_

Enclosed is my check in the amount of \$ \_\_\_\_\_

Make Checks payable to Temple Beth El and mail to:

Joey Unger, Temple Beth El, 7400 Telegraph Rd. Bloomfield Hills, MI 48301

For sponsorship or more information, contact Joey Unger, at [junger@tbeonline.org](mailto:junger@tbeonline.org) or 248.851.1100.

## A Shushan Extravaganza!

SUNDAY, MARCH 12

NOON – 2 PM, HANDLEMAN HALL

11:30 AM Megillah Reading, Chapel

Mechanical Bull, Laser Tag, Bounce House, Games, Food, Costume Parade & Prizes!

*The Mechanical Bull requires a signed waiver for each child from a parent, no exceptions!*

Pie in the Face game, Test Your Strength and a **KIDDIE CARNIVAL FOR KIDS UNDER SIX.**

50 CENTS PER TICKET, UNLIMITED PLAY WRISTBANDS FOR \$20.

Pizza, Hot Dogs, Popcorn, Hamantaschen, Beverages, Bagels and Healthy Snacks. (Food - cash only)



**CABINS  
DINING HALL  
ATHLETIC FIELDS  
GAGA PITS  
CAMPFIRE CIRCLES**

**SHABBATON**  
For current TBE 5th & 6th graders.  
**at YMCA STORER CAMP**



*Celebrate Shabbat and learn about friendship with your TBE friends, staff and clergy.*

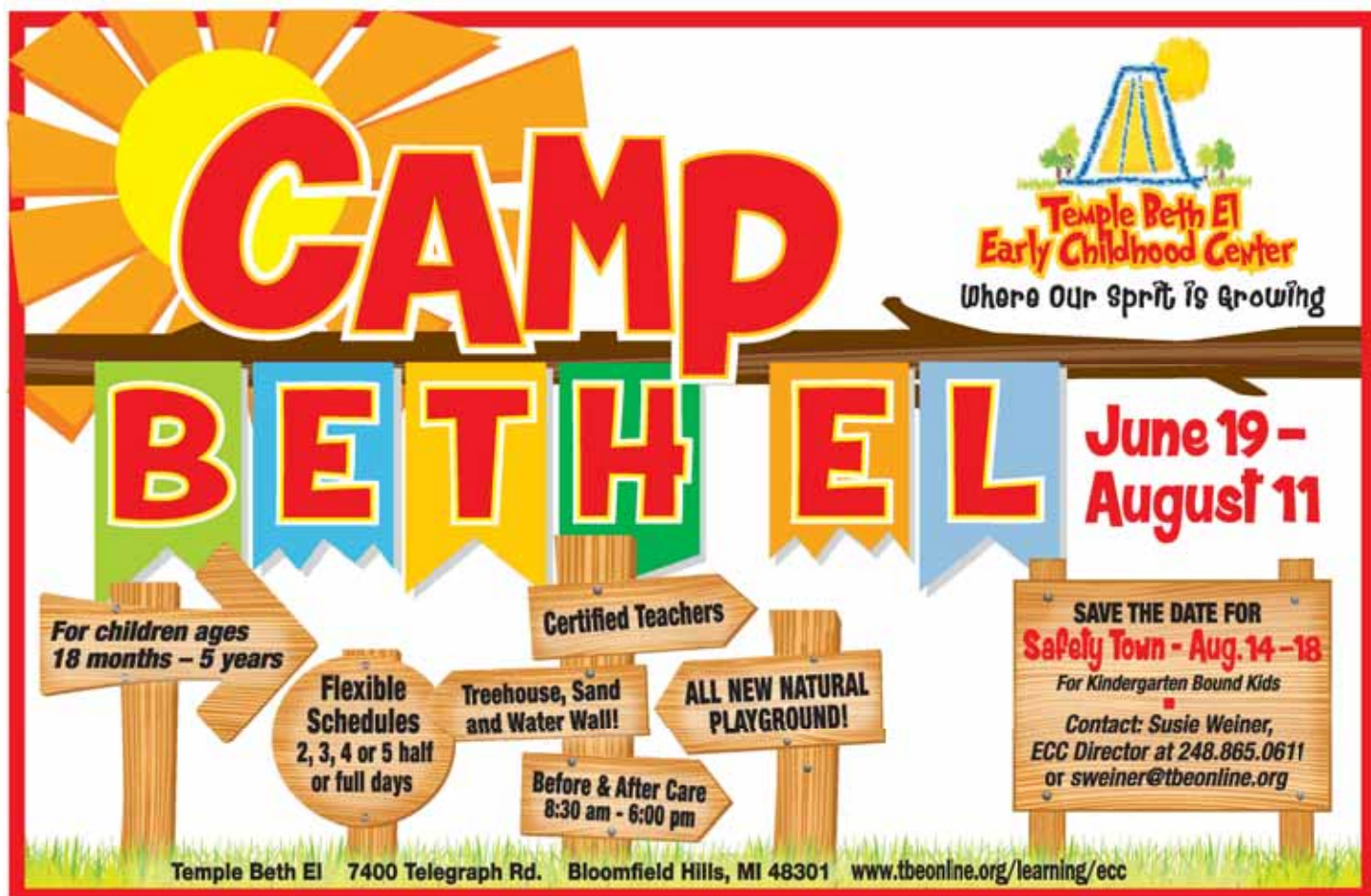
Friday, March 24 through  
Saturday, March 25  
JACKSON, MI

4:00 PM Departure  
5:30 PM Return

Transportation Provided  
FREE OF CHARGE

RSVP to Ilene Stone at  
[istone@tbeonline.org](mailto:istone@tbeonline.org) by March 10





**CAMP**

**BETH EL**

Temple Beth El  
Early Childhood Center  
Where Our Spirit is Growing

**June 19 – August 11**

For children ages 18 months – 5 years

Certified Teachers

Flexible Schedules  
2, 3, 4 or 5 half or full days

Treehouse, Sand and Water Wall!

ALL NEW NATURAL PLAYGROUND!

Before & After Care  
8:30 am – 6:00 pm

SAVE THE DATE FOR  
**Safety Town - Aug. 14-18**  
For Kindergarten Bound Kids  
Contact: Susie Weiner,  
ECC Director at 248.865.0611  
or sweiner@tbeonline.org

Temple Beth El 7400 Telegraph Rd. Bloomfield Hills, MI 48301 [www.tbeonline.org/learning/ecc](http://www.tbeonline.org/learning/ecc)

# TBE's ECC INVITES YOU TO...

A FAMILY FRIENDLY EVENT OPEN TO  
THE COMMUNITY!

**Sunday, March 26 4-5:30 PM**

- LET THE FUN BEGIN WITH -  
DJ, dancers, tattoos, photo booth,  
pizza, and salad.

**\$36 PER FAMILY - ALL INCLUSIVE**

RSVP to Jen Goren in the ECC at 248.851.1100 or at [jgoren@tbeonline.org](mailto:jgoren@tbeonline.org).



## RAYMOND & SHIRLEY ABRAMS YOUTH GROUP RECREATION FUND

### IN MEMORY OF

BEBE KANTOR  
FLORA SEVY  
FLORINE KOROTKIN  
GORDON FISHER  
HERMAN YAGODA  
JEANNETTE RODNICK  
JOSEPH ROSE  
JULIE SINGER  
LINDSEY BETH JACOBS FINSILVER  
MANNY BORDELOVE  
THELMA KERWIN  
DR. LINDA ROBERTS  
*Wendy & Henry Abrams & Family*  
PHYLLIS KAHN  
*Lisa & Bob Gittleman, Wendy & Henry Abrams & Family*

### A CONTRIBUTION

*Wendy & Henry Abrams*

## RABBI BRUDNEY DISCRETIONARY FUND

### IN MEMORY OF

NORMAN BLOCK  
*Eileen Millstone*

### IN HONOR OF

RABBI MEGAN BRUDNEY FOR THE BEAUTIFUL  
SIMCHAT BAT CEREMONY FOR OUR  
GRANDDAUGHTER  
*Debra & Martin Darvick*  
BIRTH AND BABY NAMING OF OUR DAUGHTER,  
OLIVIA FRANCES  
*Elizabeth & Elliot Darvick*

## DONALD CANVASSER MEMORIAL FUND

### IN MEMORY OF

BEBE KANTOR  
*Sandra & Thomas Millman*

## ROBERT & BEVERLY CANVASSER JEWISH ADVENTURERS FUND OF TEMPLE BETH EL

### IN MEMORY OF

THELMA KERWIN  
*Hilary Mellin & Joel Gershenson,  
Jeff & Wendy & Families*

## CARING COMMITTEE FUND

### IN HONOR OF

CINDY BOLOKOFKY'S LEADERSHIP  
*Cheryl & Ronald Kerwin*

## RABBI LEO M. FRANKLIN ARCHIVES FUND

### IN MEMORY OF

AARON BERG  
*Harriet & Mark Cooperman*

### IN HONOR OF

RETIREMENT OF HONORABLE WALTER SHAPERO  
*Collette Rosner*

## GENERAL OPERATING FUND

### IN MEMORY OF

DR. DENA MCFADDEN  
*Suzette & Aime Fitzhugh*  
FREDA VERNOFF  
*Ellen Kaye*  
JOACHIM NACHBAR  
*Rae Nachbar*  
MARY FELDMAN  
*Elaine Harris*  
NATHAN POTACH  
*Mr. & Mrs. Morris Potash*  
PHILIP BOLTON  
*Paula Marks-Bolton*  
RAISA KELMAN  
*Zinovy Kelman*  
RUTH KEPES  
*Tobi Greenspan*  
THELMA KERWIN  
*Andi & Jeff Portney*  
FLORINE KOROTKIN  
*Marion & Michael Freedman*

### IN HONOR OF

BIRTH OF OLIVIA DARVICK  
*Robin, Michael & Rachel Fenberg*

### A CONTRIBUTION

*Shelly Loomus*

## THE MICHELSON-HABER MEMORIAL FUND

### IN HONOR OF

80TH BIRTHDAY OF JON HABER  
*Janice M. Cutler*

## PAUL & SONIA HANDLEMAN

### MEMORIAL FUND

### IN MEMORY OF

BEATRICE KANTOR  
*Rose & David Handleman*

## HIGH HOLY DAYS DONATIONS

### A CONTRIBUTION

*Adele & Jason Broo*

## HOWARD & CELIA JACOBSON MEMORIAL FUND FOR THE BETH ELDERS OF TEMPLE BETH EL

### IN MEMORY OF

HELEN ROWIN  
*Lois & Harvey Freeman*

## JEWISH WAR VETERANS IN SUPPORT OF LIBRARY

### A CONTRIBUTION

*Jewish War Veterans*

## CANTOR RACHEL GOTTLIEB KALMOWITZ DISCRETIONARY FUND

### IN HONOR OF

CANTOR RACHEL GOTTLIEB KALMOWITZ'S  
BEAUTIFUL VOICE AT LINDSAY & JEFF'S WEDDING  
*Marla & Mark Canvasser*  
CANTOR RACHEL GOTTLIEB KALMOWITZ'S  
SUPPORT AND MAKING MOM'S  
FUNERAL BEAUTIFUL  
*Lori Goldberg*  
CANTOR RACHEL GOTTLIEB KALMOWITZ FOR HER  
BEAUTIFUL MUSIC  
*Cheryl & Ronald Kerwin*

## CANTOR RACHEL GOTTLIEB KALMOWITZ MUSIC FUND

### IN MEMORY OF

THELMA KERWIN  
*Ken Korotkin*

## THE BABS & HERB KAUFMAN LISTEN IN FUND

### IN HONOR OF

ANNIVERSARY OF DENNIS & ROBERTA WEBER  
ANNIVERSARY OF LAWRENCE & JACKIE KRAFT  
ANNIVERSARY OF SUSAN BORMAN &  
STUART MICHAELSON  
BIRTHDAY OF ANN SMITT  
BIRTHDAY OF BARBARA WACHSTEIN  
BIRTHDAY OF FAIR RADOM  
BIRTHDAY OF FRANCES STERN  
BIRTHDAY OF IRIS FYNKE  
BIRTHDAY OF JEAN WILLENS  
BIRTHDAY OF JOHN KAMINS  
BIRTHDAY OF JOHN REDFIELD  
BIRTHDAY OF LINDA DEUTSCH  
BIRTHDAY OF MARK HAUSER  
BIRTHDAY OF PHYLLIS GARLOCK  
BIRTHDAY OF PHYLLIS LOEWENSTEIN  
BIRTHDAY OF RABBI DANIEL SYME  
BIRTHDAY OF ROSE HANDLEMAN  
BIRTHDAY OF SHELDON ALKON  
BIRTHDAY OF TERRY NOSAN  
BIRTHDAY OF SALLY WINKELMAN  
*Babs & Herb Kaufman*

## DAVID & JEANETTE LEACH COLLEGE SCHOLARSHIP FUND

### IN MEMORY OF

MIRA LEWIS  
*Dr. George Leach & James Hall*

## RABBI MILLER DISCRETIONARY FUND

### IN MEMORY OF

BENJAMIN H. GOLDSTEIN  
*Carole Goldstein*

### IN HONOR OF

RABBI MILLER'S KIND WORDS AND SUPPORT  
*Cheryl & Ronald Kerwin*



## HARRY & SALLY NOSANCHUK CARING COMMUNITY FUND

### IN MEMORY OF

CAROLE DIAMOND  
HARRY NOSANCHUK  
MINDA TILCHIN  
AARON BERG

*Harry Nosanchuk, Dr Linda Sircus and family*

BEBE KANTOR  
FLORINE KOROTKIN  
KENNETH SILVERMAN  
MANNY BORDELOVE  
MIRA LEWIS  
THELMA KERWIN

*Linda, Scott, Eric and Hilary Sircus*

### IN HONOR OF

ANNIVERSARY OF EILEEN & IRA SALK  
BIRTHDAY OF CAROL BIRNKRANT  
BIRTHDAY OF CAROL LIFTON  
BIRTHDAY OF EDWARD SCHIFF  
BIRTHDAY OF FLORINE MARK  
BIRTHDAY OF GAYLE FLOYD  
BIRTHDAY OF JACLYN BIRNKRANT  
BIRTHDAY OF MARK HAUSER  
BIRTHDAY OF MERTON SEGAL  
BIRTHDAY OF RABBI DANIEL SYME  
SPEEDY RECOVERY OF SHIRLEY LEVIN

*Harry Nosanchuk*

ENGAGEMENT OF DR. RENA SINGER &  
ERIC BLUMENTHAL

*Linda, Scott, Eric and Hilary Sircus*

## FRIENDS OF THE PRENTIS LIBRARY FUND

### IN MEMORY OF

GERRY STEINBERG  
*Maj. Irving Steinberg*

## GERALD J. ROWIN MEMORIAL FUND

### IN MEMORY OF

HELEN ROWIN

*Dr David Bloom, Harriet & Albert Colman, Margot &  
Herb Gardner, Pat Grodecki, Ellin & Bill Perlmutter,  
Susan & Craig Wenk, Jackie & Myron Milgrom,  
Tim Pletcher & Jennifer Olsen*

## LOIS & MARK SHAEVSKY FOOD ALLERGY AWARENESS FUND

### IN MEMORY OF

DR. RICHARD MILLER

*Marlo & Tom Shaevsky*

ROSE LEVI

*The Shaevsky Family*

### IN HONOR OF

LOIS SHAEVSKY RECEIVING THE BATES STREET  
SOCIETY PILLAR AWARD FOR PHILANTHROPY

*Marlo & Tom Shaevsky*

## RABBI DANIEL SYME DISCRETIONARY FUND

### IN MEMORY OF

BEBE KANTOR

*Sue Canvasser*

MAURY PLATT

*Dolly Lax*

MANUEL ROTENBERG

*Janice Vanstrien*

ROSELEE STOLER

*Barbara Cohen*

### IN HONOR OF

SPEEDY RECOVERY OF RITA PACKARD

*Eileen Millstone*

A CONTRIBUTION

*George Chaney*

## TBE SENIOR STAFF MITZVAH FUND

### A CONTRIBUTION

*Phyllis Loewenstein, Ruth & Gil Plotnik*

## TEMPLE BETH EL ARCHIVES SUPPORT FUND

### IN MEMORY OF

FLORINE KOROTKIN

*Lucille Miller*

## TEMPLE BETH EL MITZVAH MEAL FUND

### IN MEMORY OF

ESTHER RITS

SIMKHA SROL RATNER

*Bella & Lev Shleypak*

## TEMPLE BETH EL YOUTH WING FUND

### IN MEMORY OF

FLORINE KOROTKIN

*Leslie Slatkin*

HARVEY LIPSITZ

*Arlene & Mark Rubinstein*

THOMAS CAHILL SR.

*Leslie Slatkin*

### IN HONOR OF

SPECIAL BIRTHDAY OF KIM SAXE

*Margi & Don Epstein*

## MAMIE & JASON TICKTON MUSIC FUND

### IN HONOR OF

SPECIAL BIRTHDAY OF MY WIFE, CAROL TICKTON

*Stan Tickton*

## HELEN AND PAUL ZUCKERMAN NURSERY SCHOOL FUND

### IN MEMORY OF

JANE WEINER

*ECC Teachers' Two's Team, Ronna Katzman*

*\* Tributes JANUARY 6 – FEBRUARY 6*

# TRIBUTE FORM

PLEASE PLACE MY CONTRIBUTION IN THE FOLLOWING FUND:

In Honor of: \_\_\_\_\_

In Memory of: \_\_\_\_\_

Enclosed Please Find \$ \_\_\_\_\_

**Recommend minimum contribution, \$10 per tribute.**

### SEND ACKNOWLEDGMENT TO:

Name: \_\_\_\_\_

Address: \_\_\_\_\_

City/State/Zip: \_\_\_\_\_

Donations can be made online at [www.tbeonline.org/tributes](http://www.tbeonline.org/tributes)

### DONOR'S NAME:

Address: \_\_\_\_\_

City/State/Zip: \_\_\_\_\_

Phone: \_\_\_\_\_ Member ☐ Non-member ☐

HOW DO YOU WISH THIS TRIBUTE TO BE SIGNED?



Make Checks Payable and Mail to:  
Temple Beth El  
7400 Telegraph Road  
Bloomfield Hills, MI 48301

CONTRIBUTIONS ARE TAX DEDUCTIBLE

# Yahrzeits



## We note with Sorrow the Passing of...

### ROSEMARY COLLIAS

Mother of Mari Barnett, George Collias and Peter Collias. Grandmother of Alexandra Wertheimer, Emily Pomish, Megan Beskange, Madeleine Collias, Jacob Barnett and James Collias. Great-grandmother of Everly Wertheimer, Nora Pomish and Rowan Beskange. Sister of Cindy Collias.

### ARTHUR A. ELKIN

Husband of Nancy Elkin. Father of David Elkin, Ron Elkin and Steven Elkin. Grandfather of Maria, Samuel and Elena Elkin. Brother of Julie Gurwin.

### FLORINE KOROTKIN

Mother of Kenneth Korotkin and Dr. Steven Korotkin. Grandmother of Lisa Rothberger, Andrea Belen, Emily Korotkin, Aiden Korotkin, Hailee Korotkin- Bruce, Rachel Korotkin- Yomtoob and Ari Korotkin. Great-grandmother of Milo Rothberger, Levi Rothberger, Maya Belen and Casey Belen.

### DR. DENA McFADDEN

Wife of David McFadden. Grandmother of Ben and Mitch McFadden. Mother of Robert McFadden and Daniel McFadden. Sister of Frayda Riger.

### ELAINE MOSTYN

Mother of Wendi Zupmore. Grandmother of Sara Stav, Aaron Zupmore, Arielle Zupmore, Joshua Mostyn and Noah Mostyn.

### BEATRICE "BEA" PHILLIPS

Mother of Dr. Eric Phillips and Amy Entin. Grandmother of Jennifer Weckstein, Rachel Bigio, Andrew Entin and Jeffrey Entin. Great-grandmother of Liam Weckstein.

### IRMA WALD

Mother of Debbie Canvasser, Margo Rubens, Joseph Wald and Richard Wald. Grandmother of David Wald, Stephen Wald, Ryan Rubens, Michael Rubens, Jason Canvasser, Daniel Canvasser, Jeffrey Canvasser, Seth Wald, Stephanie Wald and Nikki Wald. Great-grandmother of Jonah, Brynn, Hudson and Aiden. Sister of Leon Etelman.

## MARCH 5 - MARCH 11

* FERDINAND ALEXANDER	IRWIN HARRY BLOCH	* SAMUEL GERSON	ELDEN B. JAY	* LOUIS LOWY	WENDY SABLE	HARRIET WEINGUST
* JOHN ALEXANDER	DOROTHEA BOURKE	* HERMAN GOLANTY	ANNETTE KAHN	* JOHN Z. MERDLER	ISSAY SHLEYPAK	* SAMUEL WEXLER
* IDA ALPERT	* MARVIN BRESKIN	ROSE GOLDSTEIN	* DOROTHY KAMINS	* SYLVAN A. MESHORER	* RICHARD H. SIMON	DR. JAN WINKELMAN
* SAMUEL W. ALPERT	DAVID BRUDNEY	* ROSE GOODFRIEND	ROSALIE KANAREK	RICHARD MILLER	* RABBI M. ROBERT SYME	DONALD WURM
* MARIE BALABAN	* LOUIS COHN	EDITH GOTTLIEB	* REBECCA D. KATZ	EDNA MINKIN	* LT. DONALD WITTMAN	MIRIAM ZACKS
ROSE BANKLER	MARTIN COOPERMAN	* FRED E. GREENSPAN	BETTY KATZMAN	* MINNIE L. NEWMAN	TANN	FAY ZAMET
MARILYN BEDNARSH	ELI DARVICK	* SCHIFRA LEIDER	DR. RICHARD KOMMEL	STEVEN RADOM	DAVETTA JONES	FLORA ZIMMERMAN
ANNETTE BERRY	* FRANCES DREYFUSS	HENRY	FRANCES KOPPELMAN	MIRAH REDFIELD	THOMPSON	
FREDERICK A. BIRD	* WILLIAM ROBERT ELSON	IDA HEPNER	SOL WOLF LANDAU	MORTON JACK REMER	A. RICHARD TISCHLER	
BERNICE BIRNKRAANT	STEVEN ENTIN	* ROBERT P. HIRSCH	JOAN LEFKOWITZ	REBECCA ROBINSON	ANTHONY TROGAN	
* GOLDIE BLANCK	STEVEN FISH	* IRMA SLOMAN	RUBEN LEIPZIG	* JULIUS ROTENBERG	NORMAN WACHLER	
PHYLLIS BLAU	DENNIS FORTIER	* HIRSCHMAN	* MOLLIE ZEITMAN	BEN RUBENS	* ABRAHAM WEINER	
		* NETTIE BYRON JACOB	LEVE	ALBERT RUBINSTEIN	* MARTIN M. WEINER	

## MARCH 12 - MARCH 18

* VIRGINIA E. ADAMS	* HERBERT DREYFUSS	MORREY HARRIS	HAROLD LANDIS	* DOROTHY REINHEIMER	* BETTY H. SCHUBOT	WILLIAM H. STEINHARDT
ROSE BEIGLER	PATRICIA LYNN DUBE	BERTHOLD	* BESSIE POPKIN	* MITCHELL B. ROBINSON	* BEVERLY JANE BLAU SEGAL	ADELINE STEINMAN
* FREDA H. BEST	* CHARLES DUNITZ	HOMBURGER	LANDSBERG	SYLVIA ROGERS	SAM SEGAL	ROBERT STOLLER
* DR. I. IRVING BITTKER	* LILLIAN EPSTEIN	DAVID HOWARD	PHILLIP LAZAR	* OSCAR R ROSEN	MORTON SHAPIRO	* GERALD R. STRAUSS
RACHEL BLAIR	AUDREY PEARL FELDMAN	DAVID HULL	* JACK O. LEFTON	* MINNIE H ROSENBERG	ELRICK CHARLES SHUMER	SUSAN SNYDER SWIFT
* LILLIAN BOBMAN	* MARGARET FRANKLIN	MAX JASSENOFF	* SIDNEY LENCHNER	MASAL "TONI" ROSENFELD	SIDNEY OWEN SIEGAN	JOYCE ANNETTE TATCHIO
* LILLIAN BRODER	FLEISCHAKER	* FAYE W. JOSEPHSON	ANNE RUTH LINSKY	ROY ROTTER	* LENA RUTH SIEGEL	GOLDIE WISEMAN
JOSEPH CAMDEN	GEORGE ABRAHAM FRIED	* DR. JOSEPH HENRY KERZMAN	MILTON H. LONDON	ARLINE VIVIAN RUBIN	SIDNEY SILVER	AUGUSTA YOUNG
* JULIUS CASSEL	BENJAMIN GARLOCK	EMANUEL	HENRY MORGENSTERN	* ISAAC RUBIN	MARY SILVERMAN	* LEO J. ZUCKERMAN
* EDNA COLMAN	* JOSEPH B. GAYLORD	KOENIGSBERG	IRVING NEWMAN	JEANETTE LILLIAN SARAQUE	* MAX SMITT	
WILLIAM DAVIDSON	ALICE KOBACKER HARRIS	* EUGENE H. KOPPLE	HELEN OZER	* JACOB SAZZMAN	* AARON SNYDER	
MAURICE DAVIS		* EDITH LEAH KRELL	* ELIZABETH ANN PAYSON		* MAX SOLOMON	
PRICILLA COOPER DICKMAN		* DR. IRVIN J. KURTZ	ELIZABETH PENCHASSOFF			
* IDA DRESCHER		LARRY KUSHKIN				

## MARCH 19 - MARCH 25

CLARA AULTCHOULER	* ROSE LANDAU COHEN	DAVID GOLDMAN	* SAMUEL BARRETT KAHN	MAYME LEVINE	ROBERT ROSEN	RENEE STONE
* ARCHIE BARNETT	LAWRENCE COVILLE	* WILLIAM GOODFRIEND	LLOYD KAPLAN	BEVARD LOWEN	* SOL SAPPERSTEIN	JEAN SUCHER
SYLVIA BARR	* EDWARD J. DIZIK	HAZEL DEYOUNG	* ESTHER KATZ	* BENARD L. MAAS JR.	* BUD SCHILLER	ARON TAKSER
STANLEY BARU	DR. MYRON DORFMAN	GRAFF	RONALD KELLER	* FLORENCE METZ	* HAROLD GILBERT SCHREIBER	* JACK J. WAINGER
SAM BENSON	* CAROL ELIZABETH ELLMANN	WILLIAM M. HARRIS	* MILLIE KIRSCHBAUM	* NANCY JEAN MEYER	BONNIE LYNN SHERR	* EMANUEL I. WINKELMAN
* ELSA KOPPLE BERGER	LILO FAUMAN	ROSE HEARSH	MAXWELL R. KLUGERMAN	* LAWRENCE NEDELMAN	* MARY SIDERMAN	FRANK J. WINTON
* JOSEPH BERMAN	* DONALD FISHER	* ERNA HERZ	HELEN MAY KOPLOY	* MAX NEUMAN	R. MARGARET "PEGGY" SIMON	
MILTON BERMAN	JOSEPH FISHER	IRVING L. HIRSCHMAN	ABIGAIL ROVNER KOTT	* FRED W. PORTNOY	RICHARD SIMON	
* ANNE PEARLMAN	* DR. JOSEPH L. FORBES	SIDNEY ISRAEL	* SADIE M. KRANDALL	GOLDIE LEIDER	* MARY SOLOMON	
BRONSON	* ALEX FRANK	* ELSIE D. JACOBSON	MARIE LANNON	REICHSTEIN	* ROSE SPARR	
MARY PEARL BURDICK	* LOUIS H. FREED	MILDRED KABAKOV	ELAINE LESSER	* ANNA RESSLER	* MAE BENISON	
* FLORENCE GITLIN	SOPHIE GOLDEN	* NELLIE SANDORF KAHN	WALTER LEUBUSCHER	* HERBERT D. ROBINSON	STEINMAN	
CAMDEN	* CECILIA GOLDMAN					
* ABRAHAM S. COHEN						

## MARCH 26 - APRIL 1

* A. HARRY ADLER	* ALBERT BLATNIKOFF	* EARL I. FENWICK	DAVID HUBERT	ARTHUR MARCUS	* ANNE ROBERTS	* BEATRICE STRICHARTZ
MILTON M. ALEXANDER	DR. GEORGE CHARNAS	SELMA FISHER	JULIUS KATZ	* LAWRENCE J. MICHELSON	SYLVIA ROBINS	* EMANUEL SWEETWINE
* LOUIS ARNKOFF	JUDITH CHASE	ROSALIE FRIEDMAN	TOBY KAUFMAN	H. ROY MILLER	ALTON ROHAN	BENJAMIN TAUBER
ESAR BACHMAN	FELICE CHESNOW	* NOLA W. GOLDMAN	* JACOB KOSITCHEK	MOLLY MILLER	* RAE RUBIN	* DOROTHY BARNETT THAL
* ETHEL BEARMAN	ETTY COHN	ISAAC GRUSKIN	* FLORA KERNER KOVAN	EARLE MOSTYN	SYLVIA SAMUELS	* JOSEPH WINNER
ROBERT STANLEY BENSON	DR. LEWIS COLE	FRANCES S. GUDENKAUF	HAROLD J. KUSHNER	PAUL PACKARD	HENRY SCHWARTZ	* JULIUS YOUNG
FRANK BERMAN	EUGENE M. CURTIS	FANNIE MARCUS	DR. ISAAC KUSHNER	* HYMAN PILCHIK	SANDRA JANE SCHWARTZ	FAY ZISHOLZ
CELIA BESBRIS	EMILY EDWARDS	GUTTENBERG	* HELENE LENZNER	FRIEDA PLUDWINSKI	* JOSEPH SIEGEL	
* MARK H. BIRNKRAANT	* MOE EHRLICH	* ARTHUR HIRSCH	* ABRAHAM "AL" LEVITT	HENRY PLUDWINSKI	* IDA SILVERMAN	
	JO ANN ENGELSON	LENA HOFFMAN	* DORA GERSON LEVY	LOUIS G. REDSTONE	IRVING SIPORIN	



# Life Cycles

## MARCH ANNIVERSARIES

**March 2**  
Phyllis & Allen Gantman

**March 6**  
Dana & Derrick Glencer

**March 7**  
Susan & Daniel Dickey  
Joyce & Herman Kolin  
Laura & Myles Stern

**March 10**  
Diana & Stephen Fisher  
Mania & Mark Glazer

**March 11**  
Brenda & Sanford Passer

**March 16**  
Anna & Robert Greenstone

**March 17**  
Laura & Lawrence Lester

**March 20**  
Rita & Semyon Klein  
Susie & Adam Rosenberg

**March 22**  
Stacy & Ronald Klein  
Helaine & Arthur Steuer

**March 23**  
Leslie & David Doran

**March 24**  
Wendy & Henry Abrams

**March 25**  
Mary Jo & Marc Israel

**March 26**  
Cathy & James Deutchman  
Jacqueline & Earl Remer

**March 27**  
Jessica & Jeremy Brandt  
Jane & Richard Schwartz  
Loren & Matthew Weiner

**March 28**  
Karen & Alan Lowen  
Shelley & Jeffrey Roberts

**March 29**  
Nancy & Richard Blieden

**March 30**  
Louise & E. Todd Sable

**March 31**  
Heidi & Jay Kreindler  
Mary & Richard Senter

## MARCH BIRTHDAYS

**March 1**  
Gabrielle Blau  
Marjorie Federman  
Arlene Firsht  
Sandra Hermanoff  
Jerome Moss  
Jo-Anne Nosan  
Jason Pauli  
Marsha Rofel  
Adam Rosenberg  
Sarah Shapiro  
Sheldon Siegel  
Franklin Stewart  
Steven Stone

**March 2**  
Nancy Baron  
David Colman  
Michele Davis  
Dorothy Decker  
William Haughey  
Kenneth Posner  
Harlan Simmons  
Nella Waitzman  
Fred Yaffe

**March 3**  
Makenzie Bielfield  
Merrilee Broder  
Norton Delidow  
Harry Kirsbaum  
Bridget Kravchenko  
Ryan Lewis  
Sheryl Stoddard  
Brenna Turner

**March 4**  
Emily Cetner  
Connie Colman  
Milton Conway  
Martin Darvick  
Jonathan Haber  
Zvi Rosenzweig  
Jean Simon

**March 5**  
Jennifer Fantich  
Deborah Marwil  
Norma Pont  
Betty Stamler

**March 6**  
Susan Kaplan  
Sylvia Nelson  
Gregory Schwartz

**March 7**  
William Floyd  
Marta Lazar  
Michele Maloff  
Wyatt Schiller

**March 8**  
Gayle Camden  
Dennis Freeman  
Madeleine Gerson  
Roberta Weber

**March 9**  
Olivia Baru  
Jackson Blau  
Gary Freeman  
Myron LaBan  
Michael Zonder

**March 10**  
Hannah Cardew  
Julia Fantich  
Myrna Fischer  
Harriett Hollander

**March 11**  
David Blau  
Shane Handelsman  
Ivy Kwartowitz  
Lana Lembersky  
Susan Saraquse  
Michelle Scavone  
Elizabeth Wojtowycz

**March 12**  
Lorie Kessler  
Michelle Rosen  
Joseph Sasson  
Nathan Stotland

**March 13**  
Howard Baron, Jr.  
Estelle Kwartowitz  
Arielle Lipman  
Rachel Rapp

**March 14**  
Allen Gantman  
Ryan Gertner  
Gaal Karp  
Katie Leibhan  
Deborah Morosohk  
Nancy Powell

**March 15**  
M. Kenneth Dickstein  
Margaret Gantz  
Zachary Pollak  
Marjorie Sandy  
Victoria Sloan

**March 16**  
Irving Baron  
Michael Baru  
Mark Birnhart  
Ari Chekan  
Elayne Greenspan  
Tonja Lawrence  
Harold Margolis  
Boris Perehodnik  
Sarah Rappaport  
Bella Shleypak  
Sherry Singer  
Jennifer Werbling  
Hudson Wurn  
Carly Yashinsky

**March 17**  
Harriet Cooper  
Cantor Rachel Gottlieb  
Kalmowitz  
Robert Lisak  
Sharon Obeler  
Alexandra Schwartz  
Emily Shaw  
Jonathan Shaw

**March 18**  
Shayna Goren  
Mitchell Greenberger  
Elizabeth Kaner  
John Kessler  
Sarah Myers

**March 19**  
Ryder Alessandri  
Norman David Ash  
Joshua Berg  
Hudson Craig  
Gabrielle Fantich  
Marlene Lipman  
Mark Rubinstein  
Elyse Sutherland

**March 20**  
Samuel Kessler  
Rachel London  
David Miller  
Adam Pollak  
Anthony Shields  
Justin Wedes

**March 21**  
Jackson Harris  
Karen Hull  
Jeffrey Jenks  
Allan Lasser  
Taevon Lawrence  
Jordan Marcus  
Darren Rosenberg

**March 22**  
Jonathan Borenstein  
Cheryl Kerwin  
Adam Robin  
Joseph Rubin  
Emma Sable  
Mark Schwartz  
Scott Sircus  
Susan Turner

**March 23**  
Arnold Joseph  
Emery Kasle  
Brian Kern  
Mildred Minkow  
Edward Weberman  
Alana Wildern

**March 24**  
Evan Cardew  
Susan Goldsmith  
Elan Tamaroff  
Jennifer Lauren Weckstein

**March 25**  
Charlotte Bortman  
Laila Feldman  
Raquel Howard  
Jason Hyman  
Stuart Michaelson  
Sandra Millman  
Leah Salzenstein  
Trevor Schwartz

**March 26**  
Jaime Ettinger  
Evan Harwood  
David Miller  
Fredrick Simon  
Marla Singer  
M. Madeline Weiner

**March 27**  
Denise Brown  
Amy Farbman  
Jaclyn Israel  
Jack Kwartowitz  
Gabriel Rosen  
Nolan Werner  
Steven Wolf

**March 28**  
Harvey Freeman  
Sheldon Plotnik  
Mark Shain  
Brandon Webb

**March 29**  
Ellory Becker  
Brittany Beider  
Mark Canvasser  
Gerald Cole  
Myrle Leland  
Carol Pollak  
Simon Rozenzweig  
Steven Scharg

**March 30**  
Alicia Chandler  
James Deutchman  
Robert Dresner  
Logan Most  
Noah Sklar  
June Watnick

**March 31**  
Lucille Gersten  
Bryce Henney  
Charles Jacobowitz  
Michelle Lame  
John Lawson  
Samantha Siegel  
Ryan Soble

# MARCH 2017

SUNDAY	MONDAY	TUESDAY	WEDNESDAY	THURSDAY	FRIDAY	SATURDAY
			1 9:30 AM Torah Study 10:30 AM Advanced Hebrew 4:30 PM B'nai Mitzvah Club 7:00 PM Adult B'nai Mitzvah Intro to Judaism	2	3 6:00 PM Music Shabbat 7:00 PM 7th Grade Family Shabbat dinner	4 9:00 AM Torah Study 9:30 AM Tot Shabbat 10:30 AM Shabbat Service
5 8:30 AM B'nai Mitzvah Club 9:00 AM: TBE Sunday Morning Breakfast 9:30 AM Sunday Minyan 11:30 AM Youth choir rehearsal NOON Teen Soup Kitchen 4:00 PM World Sabbath	6 6:00 PM Monday Night School	7	8 9:30 AM Torah Study 10:30 AM Advanced Hebrew 4:30 PM B'nai Mitzvah Club 7:00 PM Adult B'nai Mitzvah	9 5:30 PM TBE Choir Rehearsal	10 5:30 PM Small Fri Shabbat 6:00 PM Shabbat Service	11 9:00 AM Torah Study 10:30 AM Shabbat Service Bat Mitzvah of Gabrielle Blau 7:00 PM Hamilton Spiel & Adult Purim Party
12 <b>PURIM</b> 8:30 AM B'nai Mitzvah Club 9:00 AM TBE Sunday Breakfast 9:30 AM Religious School Sunday Minyan 11:30 AM Megillah Reading NOON Purim Carnival	13 6:00 PM Monday Night School	14	15 9:30 AM Torah Study 10:30 AM Advanced Hebrew 4:30 PM B'nai Mitzvah Club 7:00 PM Adult B'nai Mitzvah Intro to Judaism TBE Choir Rehearsal	16	17 6:00 PM Shabbat Service	18 8th & 9th Graders Cincinnati Trip 9:00 AM Torah Study 10:30 AM Women of TBE Shabbat with TBE Choir 12:30 PM Nosh & Knowledge with Rabbi Miller
19 8:30 AM B'nai Mitzvah Club 9:00 AM TBE Sunday Morning Breakfast 9:30 AM Religious School Sunday Minyan 11:30 AM Youth choir rehearsal 1:00 PM Monthly Mishpachah	20 6:00 PM Monday Night School	21	22 9:30 AM Torah Study 10:30 AM Advanced Hebrew 4:30 PM B'nai Mitzvah Club 7:00 PM Adult B'nai Mitzvah	23	24 5th & 6th Grade Shabbaton 6:00 PM Shabbat Service	25 5th & 6th Grade Shabbaton 9:00 AM Torah Study 10:30 AM Shabbat Service
26 8:30 AM B'nai Mitzvah Club 9:00 AM TBE Sunday Morning Breakfast 9:30 AM Religious School Sunday Minyan 10:00 AM Masoret 4:00 PM: Kids Bop	27 10:00 AM Bites & Books 6:00 PM Monday Night School 7:00 PM Bites & Books	28	29 9:30 AM: Torah Study 10:30 AM Advanced Hebrew 4:30 PM B'nai Mitzvah Club 6:00 PM IFLC Judaism 101 with Rabbi Miller 7:00 PM Adult B'nai Mitzvah Intro to Judaism	30 7:00 PM Women of TBE - Break the Chain Program	31 6:00 PM Shabbat Service	



# Shabbat Services

*Your Spirit, Your Life, Your Temple.*



## *The Perfect Ending to any Shabbat Service... Enjoying Food With One Another*

Each Friday evening & Saturday morning, following services, we gather together to share in the *Oneg* Shabbat or *Kiddush*. Please consider supporting this festive gathering with a donation to the *Oneg/Kiddush* Fund.

To sponsor an *Oneg* or *Kiddush*  
contact Marianne Myers at  
248.851.1100 or [mmyers@tbeonline.org](mailto:mmyers@tbeonline.org).



Please let Temple know when you or a loved one is in need of care by contacting the Rabbis' study at 248.865.0602, [Ilucassian@tbeonline.org](mailto:Ilucassian@tbeonline.org) or by writing to [Caring@tbeonline.org](mailto:Caring@tbeonline.org).

If you or a loved one reside in a long-term care facility, please let us know so our clergy can visit.

*We will respond with  
compassion  
and confidentiality.*

### FRIDAY, MARCH 3

6:00 PM Music Shabbat  
7:00 PM 7th Grade Family Shabbat Dinner

### SATURDAY, MARCH 4

9:00 AM Torah Study  
9:30 AM Tot Shabbat  
10:30 AM Shabbat Service  
Torah Reader: Debbie Morosohk

### FRIDAY, MARCH 10

5:30 PM Small Fri Shabbat  
6:00 PM Shabbat Service

### SATURDAY, MARCH 11

9:00 AM Torah Study  
10:30 AM Shabbat Service

#### **Bat Mitzvah of Gabrielle Blau**



Gabrielle is a 5th generation member of Temple Beth El and a 7th grade student at Warner Middle School in Farmington Hills. She enjoys dancing, drawing, spending time with friends, and attending Tamarack Camps. For her Mitzvah Project she spent time packing food at the Gleaners Community Food Bank in Detroit, preparing and serving food at the Detroit Orthodox Soup Kitchen, and volunteering for the Friendship Circle's Sunday Circle program. She has worked very hard preparing for her Bat Mitzvah and is excited for her big day. Gabrielle is the daughter of Risa & David Blau and the sister of Sydney. She is the granddaughter of Louise Pilchik and the

late Hyman Pilchik, and Fayclare & Robert Blau.

7:00 PM Hamilton Spiel & Adult Purim Party

### FRIDAY, MARCH 17

6:00 PM Shabbat Service

### SATURDAY, MARCH 18

9:00 AM Torah Study  
10:30 AM Women of TBE Shabbat with TBE Choir  
Torah Readers: Harriett Cooperman, Elaine Schonberger, Nancy Fortier  
12:30 PM Nosh & Knowledge with Rabbi Miller

### FRIDAY, MARCH 24

6:00 PM Shabbat Service

### SATURDAY, MARCH 25

9:00 AM Torah Study  
10:30 AM Shabbat Service  
Torah Reader: Sara Tatchio

### FRIDAY, MARCH 31

6:00 PM Shabbat Service



TEMPLE  
BETH EL

7400 Telegraph Road  
Bloomfield Hills, Michigan 48301  
[www.tbeonline.org](http://www.tbeonline.org)  
248.851.1100

Periodicals  
Postage Paid at  
Royal Oak, MI

TIME VALUED

#### CLERGY

Mark Miller, Senior Rabbi  
Rachel Gottlieb Kalmowitz, Cantor  
Megan Brudney, Assistant Rabbi  
Daniel B. Syme, Rabbi Emeritus  
John Redfield, Honorary Cantor Emeritus

#### STAFF

Kim Raznik, Executive Director  
Deborah Morosohk, RJE, Director of Education  
Claire Danaher, Chief Financial Officer  
Susie Weiner, Director of Early Childhood Center  
Danielle Gordon, Program Director  
Lindsey Fox Wagner, Communications Director  
Joseph Unger, Director of Youth Engagement  
Alan Lowen, B'nai Mitzvah Coordinator  
Jim Gabriel, Accompanist  
Jan Durecki, Archivist  
Marie Curtis, Senior Graphic Designer  
Allan N. Friant, Sr., Building Superintendent  
Joe Winter, Cemetery Superintendent  
Morris Collins, Reception/Security  
Thomas Jablonski, Executive Director Emeritus

#### OFFICERS

Jordon Wertheimer, President  
Robin Fenberg, Vice President  
David Foltyn, Vice President  
Maxine Lievois, Vice President  
Warren Rose, Vice President  
Adam M. Lutz, Treasurer  
Liz Modell, Secretary  
E. Todd Sable, Officer  
Alex Stotland, Officer

#### AFFILIATES

Elaine Brockman, Beth Elders  
Julian Prince, Brotherhood  
Elaine Schonberger, Women of Temple Beth El  
Forest Wolfe & Alecia Rice, The Kid-ish Club  
Max Richardson, Beth El Temple Youth (BETY)



TEMPLE BETH EL'S  
*Second Annual  
Gala*  
SATURDAY  
APRIL 22  
*seven pm*

Featuring renowned artist Daniel Cascardo  
and entertainment by Collision Six.  
Strolling dinner by Cutting Edge Cuisine.

**\$150 PER PERSON    \$100 PER YOUNG ADULT (21-35)**  
Cocktail Attire - Complimentary Valet Parking

For sponsorship opportunities contact Danielle Gordon at  
[dgordon@tbeonline.org](mailto:dgordon@tbeonline.org) or 248.851.1100