

Z R E B R A R Y T B E

TBE

JUNE/JULY 2018
 SIVAN/TAMMUZ 5778
 VOL. 32 ISSUE 8



Congratulations

 TBE
 Class of 2018



JOIN US FOR
ISRAEL @ 70
AT RIVER
DAYS DETROIT
WEDNESDAY
JUNE 20

See page 20
for details

CLERGY COLUMN

A MESSAGE FROM CANTOR RACHEL GOTTLIEB KALMOWITZ



Savlanut

My last clergy column, in March, discussed *Sh'miat Haozen* (a listening of the ear), one of the *middot*, the Jewish virtues upon which we should base our interactions with ourselves, with others, and with God. This month, I would like to share some insight into *savlanut*, patience.

For any of you who have built a house, I am sure that you've encountered people telling you that you would end up over budget and over time. When I was told this as my husband and I prepared to build a house in Birmingham, I smiled and thanked the offerer for the advice, but had a slightly smug smirk hiding behind my lips. I was sure that with my organizational skills, my husband's ability to genially negotiate, and our plan to consistently stay ahead of any decisions that needed to be made, neither of these predictions would come true. Unfortunately, for a number of reasons, a year into our planning process, we have yet to break ground, and our estimated move-in date has been pushed back from this summer to next. In order to withstand the frustration of this experience, I have had to develop my *savlanut* - specifically, the kind of patience Rabbi Menachem Mendel of Satanov described when he said, "When something happens to you and you did not have the power to control it, do not aggravate the situation further through wasted anxiety or grief."

My daughter, a delightful but incessantly exasperating almost 7 year old, also creates in me a need for *savlanut*. This is true in particular instances, like when I ask her for the millionth time to put on her shoes, as well as in a general sense, as I try not to rush her development. I need to allow her to be where she is, but I also need to help shape who she will become. In the words of Janusz Korczak, an educator best known for refusing sanctuary to remain with the orphans in his charge as they are taken to Treblinka, "When I approach a child, I have two feelings: Affection for what he is today and respect for what he can become." As Korczak intimates, just as with most character traits, patience needs to be in balance. On one hand, we in Michigan had to be patient during the wintriest April I ever remember, as we waited for Spring to truly arrive. We need not waste our anxiety on something out of our control. But on the other hand, if we wait incessantly, we lose momentum, and can stagnate. In the Broadway musical *The Band's Visit*, which, by the time you read this, may have been awarded a Tony Award for Best Musical, there is a song called *Waiting*. The Israeli character Dina says,

"There's two kinds of waiting
There's the kind where you're expecting something new
Or even strange
But this kind of waiting, you keep looking off out into the distance
Even though you know the view is never going to change
You wait...."

So, then, using this description, there's patiently waiting with expectation of something happening, and there's hopelessly waiting for nothing. In either case, though, it takes proactive behavior to balance our *savlanut*. If we had just patiently waited, would we ever have had a Jewish State? Absolutely not. As we celebrate Israel's 70th year, let us strive to balance our *savlanut* for things out of our control with our essential striving to continue to make ourselves, our relationships, and the world a better place.

Cantor **RACHEL** GOTTLIEB KALMOWITZ
rgk@tbeonline.org

CONTENTS

TBE BULLETIN



**Have you recently
changed your
address, phone
number, cell number,
or email address?**

**At Temple Beth El our spirit
is growing, and we are
constantly striving to improve
our services for you.**

Help us stay in touch by updating your
Temple membership information.

You can simply update that
information online at

tbeonline.org/change-of-address

You may also contact Rachel Rudman at
rudman@tbeonline.org,
by phone at 248.851.1100, or
mail your current information to
Temple Beth El

Attn: Rachel Rudman
7400 Telegraph Road
Bloomfield Hills, MI 48301

6-7 LIBRARY

8-9 WE ARE PROUD

10-11 MEET OUR TEACHERS

12-17 AROUND TEMPLE

18-23 LIFE CYCLES / YARHZEITS / TRIBUTES

24-28 UPCOMING PROGRAMS & EVENTS

30 JUNE / JULY CALENDAR

31 SHABBAT SCHEDULE



Do you have a
green thumb?

Volunteers are needed to help maintain our TBE garden this summer. If you have some time to help, please contact Debbie Morosohk at 248.851.1100 or dmorosohk@tbeonline.org for more information.



TEMPLE
BETH EL

Temple Beth El, U.S.P.S. 075360 is published monthly.
Temple Beth El, 7400 Telegraph Road, Bloomfield Hills MI.
Periodicals postage paid at Pontiac, Michigan. Postmaster
send address change to: Temple Beth El, 7400 Telegraph
Road, Bloomfield Hills, MI 48301

YOUR TEMPLE WORKING FOR YOU

SPIRITUAL HOME



Although Temple is our spiritual home, Jewish tradition also considers your home a *mikdash m'at* (small sanctuary). For all the sacred moments we share as a community, there is just as much Jewish life to celebrate at home. That is just one of the reasons we traditionally hang a *mezuzah* and bless our homes.

A *mezuzah* can make a house feel like a Jewish home, and there is a very nice, simple ceremony to affix the *mezuzah* and bless your home. Whether you just moved, or have been in your home for a while ... our Temple Clergy would love to come over to create a nice moment of blessing.

Contact Rabbi Miller or Rabbi Brudney via Laura Lucassian (llucassian@tbeonline.org or 248-851-1100) or Cantor Kalmowitz via Susan Rice (srice@tbeonline.org or 248-851-1100).

Temple Beth El has 168 years of history, nearly 1,100 member families, and a calendar packed with opportunities to connect, learn, celebrate, and volunteer. But just as important, our Temple is here to provide resources, guidance, rituals, and spiritual counseling for a range of special moments throughout your lifetime. Each month, this page will help you explore the various aspects of what Temple has to offer, with specifics about how to take advantage of your membership.

For example:

BRIS/BABY NAMING: Special ceremonies at Temple, your home, or elsewhere to bless a new child, give them a Hebrew name, and welcome them into the Covenant of the Jewish People.

ANNIVERSARIES: Beginning in 2018, we will honor those celebrating "quinquennial" (every 5 years) anniversaries with a special blessing on the *bimah* during a Friday night service. For those married 50 years or more, please let us know so we can prepare a special gift – you are an inspiration to us all!

BLESSING YOUR HOME: A *mezuzah* can make a house feel like a Jewish home, and our clergy are available to help you affix a *mezuzah* with a simple ceremony to bless your home.

SPIRITUAL COUNSELING: Life is filled with beauty, but it also contains difficulties. Judaism has a lot to offer, and our compassionate clergy are here to talk with you confidentially about any emotional, spiritual, or religious concerns you would like to discuss.

ELDER CARE: No matter how much we love our aging family members, it can be overwhelming to deal with the emotions that come with changes in their needs and abilities – Temple is here to help.

HOSPITAL VISITS: Whether you or a loved one are in the hospital for surgery, illness or another reason, we are here to offer comfort, spiritual guidance, and practical support. Our clergy visit hospitals throughout the metro area regularly, and are ready with a prayer, song, or gentle conversation.

SHIVA CORPS: After a funeral, it is customary to gather for *Shiva* to share stories, comfort one another, and join together for a brief service. In addition to our clergy, the TBE *Shiva* Corps is a group of volunteers who are ready to provide an opportunity to share memories and say Mourner's *Kaddish* surrounded by community.

UNVEILING: Near the end of the first year after the death of a loved one, we return to the cemetery for an "unveiling" ceremony to install and bless a permanent marker at the gravesite.

For more information, or to let us know what's going on in your life, contact Laura Lucassian at llucassian@tbeonline.org or 248.851.1100.

"End-of-Life Hotline" Caring and professional answers to legal, medical, ethical, and religious questions. **248.325.9701 or eol@tbeonline.org.**



168th Annual MEETING THURSDAY, JUNE 14

6:30 PM
Wine & Cheese
7:00 PM
Meeting

**NEW
THIS
YEAR** **VOLUNTEER
SPIRIT
AWARDS**

Contact Marianne at mmyers@tbeonline.org
or 248.851.1100 for more information.



DEAR TEMPLE MEMBERS

We are writing to let you know that our Executive Director, Kim Raznik, will be leaving Temple in order to take a new position over the summer – her last day here will be July 13. We are sad to see Kim leave the Temple Beth El family, but are excited for her as she moves in a new direction and pursues new challenges. Kim has been a vital and valued member of our team, and has accomplished a huge amount of good over the past three years.

Moving forward, the Temple's Executive Committee will be forming a search committee to find a top-tier professional who can add organizational leadership to the phenomenal staff we have assembled at Temple. Our Executive Director is a premier position, and we will take the time to find the right person.

Below is a note from Kim, and please find a moment to stop by and wish her well. We hope to see you soon - at our big Summer Kickoff (Friday, June 1) or the Annual Meeting (Thursday, June 14).

Wishing you and your families a nice summer,

Jordon Wertheimer, President
Liz Modell, President-Elect
Rabbi Mark Miller

Dear Temple members,

As I prepare to take the next step in my professional journey, I am reflecting on the past three years - which have been remarkable on many levels. I have grown fond of so many Temple members, and found it a privilege to work with such an amazing and dedicated staff. I am very proud of our team and all we have accomplished together.

My time at TBE has exceeded expectations, and I will take with me new wisdom, great memories, and lifelong friendships. I wish each of you the success you deserve, and look forward to watching as the Spirit of TBE continues to grow!

Kim Raznik
With respect,
Kim Raznik

Make-and-Take
EVENT

Bead & Feed

IN THE PRENTIS
MEMORIAL LIBRARY

THURSDAY, JUNE 21
6:00 PM

Come hear from Beth, learn a
new skill, eat, chat, and enjoy
this fun make-and-take event!



Beth Stone, a lifelong beader and author of *Seed Bead Stitching*, *More Seed Bead Stitching*, and *Bead Play Every Day* will be speaking about her work and teaching participants to make a simple necklace using a variety of beads.

Contact Laura at lwilliams@tbeonline.org or 248.851.1100 for information or to RSVP.

\$36 PER PERSON

**ALL PROCEEDS FROM THIS EVENT GO TO
THE PRENTIS MEMORIAL LIBRARY**

*Dinner sponsored by the
Lester & Jewell Morris Cultural Arts Fund*



10 REASONS TO VISIT THE PRENTIS MEMORIAL LIBRARY THIS SUMMER

COME VISIT

by **LAURA WILLIAMS** Curator lwilliams@tbeonline.org

1 BOOKS & MORE

Of course we have works of fiction, biography, history, genealogy, cookbooks, art and music. But wait, there's so much more! Not a huge reader? Spend time taking in the beautiful detail of the Aid Kushner models of synagogues from around the world. If you're a movie fan, browse our DVD collection and look out for "Movies and Munchies" coming this fall! And best yet: it's all free and available to you!

2 THAT VIEW

The view from the library is amazing in any season. An entire wall is top to bottom windows. So rain or shine there's natural light and a gorgeous view of our natural surroundings that makes the room feel open and inviting. Come see for yourself!

3 NEW CHAIRS

Have you seen the new reading chairs? There are four new wing back chairs and they fit right into the setting. They lean back just enough to allow you to settle in and stay comfy while you read, watch your kids play in the children's section, or just hang out.

4 THE QUIET

In the middle of a calm hallway, the library is the perfect place to sit

down, chill out and relax. With peace and quiet in abundance, it's a perfect stop for a quick escape from constant activity. Temple is an extension of your home, so why not take the opportunity to enjoy?

5 A SMART TV

You can watch movies, play videos, listen to music, or link it to your computer for an even bigger screen. How big is the TV you ask? 65 inches of HD perfection. Have a meeting at Temple? Schedule it in the library and take advantage of this new resource for presentations.

6 THE KEURIG

Our newest addition to the library, the Keurig, makes this cozy part of Temple even better. Pick your flavor, brew the perfect cup, and sit down with a good book for a carefree summer morning.

7 KIDS LOVE THE LIBRARY

Bring your kids to the library and let them explore the hundreds of children's books in our collection. Our children's section has books on all the major Jewish holidays, themes, and even some silly tales (have you read the one about tushies)? We've got big picture books, a fun chalkboard for creativity, and some

interactive games for the little ones. Fun for all!

8 AMAZING WI-FI

The library is in a magical spot at Temple where the unicorns roam and the Wi-Fi is crystal clear! For a change of scenery just bring in your laptop, or hop on our computer to do work, research, or casually surf the web in the enchanting TBE library.

9 GREAT SPOT TO READ THE PAPER

Read our copy of the Jewish News or bring your paper of choice (you know, the one that you just haven't gotten around to reading yet)! Read number 6 again with "newspaper" instead of "good book"; sounds pretty good, right? Have a paper you think we should subscribe to? Let us know!

Last but not least, the final reason that you should take advantage of the Prentis Memorial Library this summer:

10 ME, YOUR FRIENDLY TEMPLE CURATOR

Looking for a good book? Need help with some family research? Have a reference question? Wanna chat about the weather? I am here for you, so come visit!

WE ARE PROUD

OUR SPIRIT IS GROWING



CATHY & JIM DEUTCHMAN

CATHY & JIM DEUTCHMAN

Cathy and Jim Deutchman, Executive Producers, are proud to announce the Detroit Public Television (DPTV) premiere of their documentary "Those on the Front Lines of Alzheimer's & Dementia." The documentary features heartfelt stories and interviews of leading professionals from around the world sharing the work they're doing, tracking advances in care and prevention, how the medical community is embracing the holistic world, and exploring how we, as a nation, are addressing the challenges of the aging Baby Boomer generation.

"Those on the Front Lines of Alzheimer's & Dementia" airs **Wednesday, June 27 at 9 p.m. on Channel 56.** The film is the newest by award-winning Producer/Director Keith Famie.



BRADLEY GORDON

BRADLEY GORDON

Bradley Gordon (husband of Danielle Gordon, TBE Program Director), is the new owner of Art + Frame in Bloomfield Hills. Bradley has always had a passion for art. During his studies at Indiana University he obtained his Bachelor's Degree with a Major in Fine Arts and a Minor in Art History. While at school, Bradley served as an apprentice to Nathan Hunter, an established wood furniture maker and designer. After working in various positions in graphic design and visual merchandising, he spent the last five years running a fourth generation, industrial laundry in Pontiac, MI as its Chief Operating Officer. Under his supervision, the company doubled its yearly gross profit.

After the birth of his daughter, Bradley decided to combine his artistic abilities and business skills to purchase and grow this locally owned and operated art and custom frame shop.



CHRIS HARRISON

CHRIS HARRISON

Chris Harrison has been selected for the JewV'Nation Fellowship's 2018 Jews of Color Leadership Program. JewV'Nation is a program of the Union for Reform Judaism. The fellowship is a nine-month leadership development program for visionary Jewish leaders across North America. Attendees will participate in cutting-edge seminars.

Seminars will focus on identity enrichment, professional and leadership development, Jewish learning, movement-building, mentorship, risk-taking, and project work.



JARED MONCHNIK

JARED MONCHNIK

Jared Monchnik, a graduate of the College for Creative Studies in Detroit, exhibited at the Holding House gallery on Saturday, April 7. On display were some of his many works in glass, metal and painting created during his final year at CCS.

Congratulations Jared we look forward to seeing more of your beautiful work.

SHARE YOUR
SIMCHAS

FAMILY ENGAGEMENTS. MARRIAGES. BIRTHS. SPECIAL ACCOMPLISHMENTS.
If you or a family member would like us to share your good news in the TBE Bulletin, contact Lindsey at lfowagner@tbeonline.org or 248.851.1100.

WE ARE PROUD TO HONOR



**The Bessie Spector
Oldest Americans
Brunch, held on Friday,
May 18, honors those in
the Jewish community
who are age 95 or older.**

This special afternoon is generously sponsored by the family of Bessie Spector and other community supporters.

**WE ARE PROUD TO
ACKNOWLEDGE THE FOLLOWING
TBE MEMBERS:**

Lorraine Blanck	Ida Lucas
Natalie Canvasser	Lucille Miller
Rhoda Dicken	Charlotte
Abram Epstein	Rubinstein
Harvey Freeman	Marjorie Hecht
Phyllis Garlock	Simon
Helen Glasser	Anne Sloman
Merwin Grosberg	Bertha Stearn
Helen Harris	Harmon Tron
Marcia Harris	Leah Tron
Leo Hollander	Jean Willens
Dorothy Kahn	Flora Winton
Donald Levine	



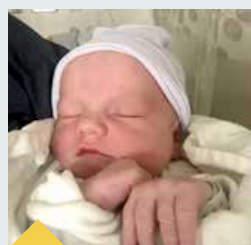
NEW ARRIVALS



MASON TAYLOR FILLMORE

MASON TAYLOR FILLMORE
BORN MARCH 27, 2018
SON OF ERIKA AND KURT FILLMORE

Little brother of Dylan and Elliana
Grandson of Sharynn Meltzer,
Nancy and Paul Riethmeier
Great-Grandson of Marilyn Miles



DAVIS FITZ KOROTKIN

DAVIS FITZ KOROTKIN
BORN MAY 1, 2018
**SON OF EMILY AND STACY
KOROTKIN**

Grandson of Ken Korotkin,
Carol and Larry Skalsky and
Diane Meitzner



Meet Our TEACHERS

We hope you enjoy reading these highlights of those who so influence our tiniest tots.



AMY KESSLER

Welcome to the second installment of Meet our Teachers, where you get to meet the individuals that lead our Early Childhood Center (ECC) at Beth El. Because they are the ones to whom we entrust our tiniest tots, we thought you'd share our curiosity in getting to know more about them: their backgrounds, what gives them satisfaction in their work, and basically get a general idea of them as individuals and teachers. Enjoy these latest introductions!

TEACHER: AMY KESSLER

We are thrilled to have Amy join our ECC staff! Her calm demeanor must have been honed during the many years she spent working in public schools. Amy's a tremendous asset to our school, and the Zen tone she sets in the "afour," or grey room, is a welcome contrast to what often seems like a crazy world outside.

This is what we found out about Amy:

- Amy and her husband are a fourth generation TBE family. Their children Ethan, a rising PK'er, and Madison are now fifth generation members.
- She loves watching her 2-year-old students experience school for the first time. "Everything is so exciting at this age, it's fun to watch."
- Amy loves Rosh HaShanah because we all get a fresh start. Her entire family is together for this holiday, and that makes it very special.
- Her favorite food: Buddy's pizza. And plain cheese is just fine with her!



ERICA GRAY

TEACHER: ERICA GRAY

Erica is full of energy and a mainstay in our classrooms of two-year-olds. After teaching swimming to the kids of many TBE members over the years, she joined us at the ECC some five years ago. She loves watching the children grow!

Here's what we learned about Erica:

- Passover is her favorite holiday. "Although it takes a lot of preparation it's so worth it!"
- She loves a great piece of pita from Al Amarra or Mezza.

TEACHER: JILL GREENSPUN GUN

Jill brings a wealth of experience to her Pre-Kindergarten classroom. It's hard to believe that she's been teaching at TBE for 13 years. Prior to that she taught Kindergarten for years in public schools. She loves having the chance to teach along side her daughter Alana in her classroom.

This is what you may not know about Jill:

- She's a fifth generation member of the TBE family.
- Jill loves teaching Pre-K because she adores watching the kids walk through her door and "filling their individual buckets." For her, it's the look in the children's faces when they are proud of themselves that's priceless.
- She loves Passover because the children search for the *afikomen*, a broken piece of *matzo*. She feels that it's very telling that it's the children that hunt for it, as they are the ones who will be "putting our world back together."
- Avocado is Jill's favorite food. She eats it with everything!



JILL GREENSPUN GUN

ECC SPECIAL PERSON'S DAY

MONDAY, MAY 14

We had a huge turnout at the EEC's Special Person Day. Every ECC child brought a guest who's special in their life. They did a great cookie jar project and sang songs for their guests. Without a doubt, this is sure to become an annual event.



CLASS OF
2018



**IT'S HARD TO
BELIEVE THE END
OF ANOTHER
SCHOOL YEAR IS
ALREADY IN THE
WORKS!**

On Friday, June 8 we invite all families with current PK students in the Green and Orange rooms to our annual Moving On Ceremony in the DeRoy Sanctuary. After the service we'll have bounce houses, games, and brunch for our new graduates to enjoy. Contact Jen Goren at 248.851.1100 or jgoren@tbeonline.org for more information.

GRADUATES:

Evan Baker
Lillian Berg
Makenzie Bielfield
Parker Brandt
Anna Burkett
George Cetner
Matthew Fink
Sutton Holtz
Isabella Howard
Jaime Ishbia
Greyson Krut
Noah Leibhan
Hallie Mauch
Avery Robin
Levi Rothberger
Brielle Silverstein
Avery Simmerman
Hanna Sorser
Dylan Spilman
Jack Unatin
Zachary Weisberg
Scarlet Wigod
Dallas Wurn



TEMPLE BETH EL WALKED FOR ISRAEL SUNDAY, MAY 6



THANK YOU to everyone who was involved in organizing my retirement farewell on May 11. It was a meaningful conclusion to my years of service as the Director of the Rabbi Leo M. Franklin Archives. I would also like to express appreciation to those who made a special effort to attend the service on my behalf or placed a congratulatory message in the commemorative booklet that was distributed that evening. I was blessed to work as your archivist and I am gratified to know how my efforts benefitted the Temple and the community.

– JAN DURECKI



CLASSICAL REFORM SHABBAT

FRIDAY, MAY 11

Our Classical Reform Shabbat was an evening to remember. The service included a heartfelt thanks to our Archivist of long standing, Jan Durecki. Jo-Ann MacWilliams-Wolf, Archives Committee Chair, as well as Archives Committee members and supporters Joan Jampel and the Honorable Walter Shapero spoke about the legacy of her work at TBE. The Jewish War Veterans of Michigan gave a special presentation of Jan's work in preserving their legacy in a tribute to her dedicated service. The journey down memory lane continued with a wonderful service of songs and prayers from the Union Prayer Book. It all came to a close with the reminiscent tune of the Beth El song, and our best wishes to Jan for a joy-filled future and our gratitude for all she's accomplished at Beth El.

TOT SHABBAT MAD SCIENCE

SATURDAY, APRIL 21

A Mad Scientist came to TBE and wowed us with the magic of nature! We loved learning all about the crazy natural phenomena in our world.



LIBRARY LAUNCH

SUNDAY, APRIL 22

Jim Rice, ECC Dad and Board Member, read a special Sammy Spider book to kids in PreK–3rd Grade, and Sammy Spider was here to visit throughout the event! 4th–6th graders had the chance to compete in a library scavenger hunt and EVERYONE entered their names for the chance to win a Bluetooth speaker. Masoret with Rabbi Brudney was packed, and we all had so much fun! Check out these pictures for a peek at the event.



LOCK-IN SLEEPOVER

APRIL 21 - 22

For their final event of the year, our 3rd – 5th Graders stayed overnight at Temple. They played Bubble Soccer, made slime, and played in Benton's Place. A great time was had by all.



MONDAY NIGHT SCHOOL FINAL CELEBRATION

MONDAY, APRIL 30

For the final gathering of Monday Night School we celebrated our successful year together. We had dinner at California Pizza Kitchen and then headed over to Marvin's Marvelous Mechanical Museum for fun and games. What a great way to end the year!



TOT-SHABBAT SPIN ART

SATURDAY, MAY 12

We had so much fun making large and small spin art projects with help from our friends at Creative Arts Studio! We wrote get well cards to hospitalized kids and had so much fun while doing a mitzvah!





NAVA TEHILA

MAY 18-19

Temple Beth El had the opportunity to sponsor a fabulous music weekend with Nava Tehila, a unique group from Israel. On Thursday TBE musicians participated in a music workshop with the band when we learned their music as well as their approach to leading prayer. Then there were two spectacular events Friday and Saturday night at Bethel Community Transformation Center. We prayed, sang, and danced – the spirit of their music was inspiring to all.



7TH GRADE TRIP

After a year of engaging in a different mitzvah each month, our 7th grade class finished out the year with a focus on honoring those who have died. We traveled to B'nai David cemetery in Detroit where we helped with the annual spring cleanup.





2ND ANNUAL WOMEN'S RETREAT

MAY 18 – 19

A group of fantastic TBE women spent a day at the Butzel Retreat Center learning, connecting, and bonding over our theme of joy. From our energetic Shabbat service, to our late night campfire (complete with s'mores), to small group discussions about what's *really* going on in our lives, we had an incredible time together.



Relax-Unwind-Engage

SAVE THE DATE FOR OUR NEXT
WOMEN'S RETREAT
MAY 10-11, 2019

The weekend following Memorial Day. We can't wait to do it again!



JUNE BIRTHDAYS

JUNE 1

Rebecca Bloom
Sophia Good
Evan Leibhan
Kate Matlen
Brett Turner

JUNE 2

Louis Bradfield
Stephanie Lester
Spencer Levin
Larry Schiff
Joyce Welford

JUNE 3

Samantha
Goldsmith
Marcia Lewis
Beth Michelson
Jeffrey Miro
Laura Mucha
Judith Nussbaum

JUNE 4

Melvin Glaser
Beatrice Howard
Michael Minkin
Jill Syme
Jay Victor

JUNE 5

Judith Bergman
Kate Burkett
Joanne Canvasser
Jordan Glass
Morgan Goodman
Rebecca Lynch

Ralph Nunez
Payton Renusch
Eli Turner

JUNE 6

Lawrence
Freedman
Suzanne Gilson
Jeffrey Goldsmith
Aaron Goldstein
Jack Gross
Lindsay Levin
Larry Maloff
Rabbi Mark Miller
Sharon Resnick
Elise Stotland
Sheldon Toll
G. Robert Weiner

JUNE 7

Myrna Kolin
Neil Simmerman
Baker Urdan

JUNE 8

Lauren Guz
Eleanore Rose
Scott Seligman
Grace Teal
Ian Williams

JUNE 9

Maxine Ben-Yuri
Jan Freedman
Gary Goodman
Mary Jo Israel
Jane Schwartz

Ned Specktor
Treger Strasberg
Wendi Zupmore

JUNE 10

Stephanie Belkin
Ronda Reibschied
Jessica Unatin
John Weber

JUNE 11

Cheri Bielfield
David Bloom
Sharon Green
Matthew Gutman
Laurence Imerman
Aiden Kaplan
Evan Sachs

JUNE 12

Robyn Coden
Harriet Cooperman
Marjory Epstein
Joanne Hurwitz
Hilary Kotik

JUNE 13

Jonah Lipman
Katherine Scher
D. Larry Sherman
Breanne Turner

JUNE 14

Marcy Grant
Jane Gross
Bentley Haimbaugh
Abraham Miller

JUNE 15

Hannah Bassirpour
Elaine Brockman
Marcia Klein
Kelly Kling-Selander
Jody Webb
Holly Weissman

JUNE 16

Michael Bassirpour
Otto Dube
Ethan Kalt
Glenn Rosin
David Rubinstein
Toby Teal

JUNE 17

Edwina Davis
Lynn Newman
Denise Rosinski

JUNE 18

Miriam Goren
Shay Gunsberg
Rachel Ann Miller
Daniel Reibschied
Pamela Renusch
Arnold Weingarden

JUNE 19

Benjamin Aaron
Sigrid Ainhorn
Ian Bolton
Erica Brown
Rachel Graff
Marc Greenberger
Matthew Kessler

Heidi Kreindler
Jaden Rockind
Madeline Wein

JUNE 20

Jillian Byer
Brooklyn Elson
Trayce Fenton
David Gorosh
Madison
Salzenstein
Sam Shamie
Walter Shapero
Bridget Strumban

JUNE 21

James Colman
Eve Lewis
Jeff Margulies
Earl Remer
Spencer Werner

JUNE 22

Joseph Berke
James Grosfeld
Alex Lubyansky
Edith Simmons
Jacob Tompkins

JUNE 23

Emerson Beckett
Estelle Egrin
Helen Glasser
Jonathan Gourwitz
Alana Greenspan
Alan Toby
Andrew Weitz
Mark Zacks

JUNE 24

Natalie Chaiken
Norman Fill
Michael Freedman
Adam Kutinsky
Stewart Levin
Carolyn Nosanchuk
J. Jackson Paige
Ava Taylor

JUNE 25

Jaye Coden
Penny De Vaull
Preston Haimbaugh
Stuart Kayne
David Richardson

JUNE 26

Morton Collins
Donald Klein
JoAnn MacWilliams-
Wolf
Elaine Schonberger

JUNE 27

Jeffrey Canvasser
Richard Goren
Leo Hollander
Samantha Jahr
Ronald Kerwin
David London
Carol Park
Alysa Saperstein
Hanna Sorser
Casey Stewart

JUNE 28

Henry Abrams
George Cetner
Ethan Fink
Sam Hirsch
Angie Kutinsky
Debbe Saperstein
Joel Tauber
Karen Turner
Robert Vernan

JUNE 29

Jason Cardew
Joanna Geer
James Marks
Shelley Roberts

JUNE 30

Susan Abrams
Robert Blau
Susan Borman
Rachel Frenkel
Sylvia Lee
Barry Pearlman
Daniel Prohow
Noah Singer

JUNE ANNIVERSARIES

JUNE 1

Kelsey and Evan Ross

JUNE 2

Elizabeth and Mark Dizik
Kelly and James Selander
Diane and Lyle Victor

JUNE 3

Gretchen and Ethan Davidson

JUNE 4

Karen and Leonard Beznos
Lucille and Richard Gersten
Jessica and Ryan Gertner
Nicole and Gregory Schwartz

JUNE 6

Rochelle and Otto Dube
Miriam and Kalman Goren
Patrice and Eric Phillips
Suzanne and Albert Resnick

JUNE 7

Esther and Lawrence Weitzman

JUNE 8

Elisa and Stuart Stoller
Arielle and Jon Stone

JUNE 9

Susan and Robert Dresner

JUNE 10

Mary and David Miller
Elaine and Robert Tell
Carol and Michael Ziecik

JUNE 11

Deborah and McCrory

JUNE 12

Norma and Nelson Pont
Edith and Milton Simmons
Lois and Harold Stein

JUNE 13

Libby and Andrew Beider
Suzanne and Stewart Levin

JUNE 14

Jan and Lawrence Freedman
Rochelle and Harold Margolis
Helen and Kenneth Stone

JUNE 15

Marjorie and William Sandy

JUNE 16

Barbara and Robert Bachman
Jacqueline and Brian Gurwin

JUNE 17

Mildred and Frederick Minkow
Katherine and Eric Scher

JUNE 18

Lisa and David Feinbloom
Robin and Michael Fenberg
Harriet and Norman Rotter

JUNE 19

Pamela and David Gourwitz
Francine and Steven Menken

JUNE 20

Margot and Joel Behrmann
Christine and David Colman
Laura and Graham Eddleston
Sandra and Arthur Foster
Lana and Michael Lembersky
Shelly and Joel Tauber

JUNE 21

Amy and Joseph Berke
Lori and Ryan Hirsch

Susan and Barry Lepler
Nicole and Richard Van House

JUNE 22

Meredith and Alexander Israel
Cheryl and Ronald Kerwin
Gail and Kenneth Posner
Elaine and Stephen Sturman

JUNE 23

Barbara and Howard Belkin
Nadine and David Farbman
Joanna and Jack Geer
Carolyn and Charles Greenberg

JUNE 24

Barbara and Neil Goldman
Carole and Martin Schock
Heather and Sheldon Siegel

JUNE 25

Sandra and Robert Weitz

JUNE 26

Alison and Storm
Kirschenbaum
Eileen and Donald Klein
Bridget and Eric Kravchenko

JUNE 27

Gayle and William Floyd
Michelle and Alan Posner
Jennifer and Daniel Weckstein

JUNE 28

Joanne and Arnold Danto
Fran and Michael Goran
Barbara and Jonathan Haber
Brooke and Jeff Margulies

JUNE 29

Debra and Christopher Hackman
Lauri and Lawrence Hoffman
Lori and Lawrence Rapp
Barbara and Daniel Redstone
Denise and Robert Rosinski

JUNE 30

Allison and Jason Cardew
Stacy and Gordie Schaeffler
Vivian and Gerald Cole
Dana and John Weber

JULY BIRTHDAYS

- JULY 1**
Mark Adler
Jacob Bloom
Gordon Meisner
David Snyder
- JULY 2**
Stacey Bernson
Laura Gorosh
Samuel Jassenoff
Elijah Kessler
Martin Myers
Brett Shannahan
Kyle Shannahan
Zachary Shaya
William Slatkin
Helen Stone
- JULY 3**
Goldie Berk
Scott Kaufman
Bryce Kotik
Carol Plaut
Robert Rosinski
Daniel Rotter
Jacob Stein
- JULY 4**
Robert Bachman
Jeff Gunsberg
Lauren Jahr
Boris Khankin
Donald Levine
Reed Powers
Bertha Stearn
- JULY 5**
Nicholas Davis
Derrick Glencer
Karen Withington
- JULY 6**
Sharon Adler
David Johnson
Aaron Kaplan
James Michelson
Nelson Pont
- JULY 7**
Marshall Blau
Graham Eddleston
Barbara Kohler
Les Siegel
Alexandra Wineman
- JULY 8**
Bethann Kalt
Edward Lichten
Eileen Millstone
Jan Purther
- JULY 9**
Jon Birnkrant
Jared Bortman
Michael Federman
Nicole Jahr
Olivia Lindsey
Richard Shapack
Amelia Victor
Charles Zamek
- JULY 10**
David Doran
Nancy Edmunds
Haley Harper
Stanley Levy
Nathan Modell
Paul Wolf
- JULY 11**
Savannah Adelson
Tori Adelson
Fern Ettinger
Richard Farkas
Chloe Kreindler
Maxwell Levitsky
Helaine Mandell
Karen McDonald-Weiss
- JULY 12**
Eileen Klein
William Klemm
Edward Risov
John Sinclair
- JULY 13**
Aviva Friedman
Sloane Hittleman
Robert Levine
Alan Posner
Serge Sorser
- JULY 14**
Matthew Galin
David Goldberg
Joyce Miller
Sarah Shaya
- JULY 15**
Elizabeth Dizik
Mark Dizik
Stuart Egrin
Alexis Farbman
Sutton Holtz
Ellen Kaye
Cole Kirschenbaum
Rita Klein
Sarah Lynch
- Madalyn Monchnik
Brooke Taylor
Jason Yourofsky
- JULY 16**
Adam Behrendt
Eleanor Blum
Adrienne Gordon
Beth Hill
Alexander Lambert
Sandra Marks
Deborah Ross
Marc Sable
Lisa Scholnick
Feinbloom
Drew Stone
- JULY 17**
Daniel Feinbloom
Peggy Frank
Anna Greenstone
Ashley Rich
Wendy Schwartz
Evan Webb
Deloris Weinstein
- JULY 18**
Brenda Friedman
Scott Kantor
Howard Lax
Richard Loewenstein
Frank Mabry
Milo Rothberger
Mason Shaevisky
Carly Taub
- JULY 19**
Andrew Budisak
Sophie Drouillard
Arthur Foster
Jeffrey Hollander
Cole Jacobson
Jane Kushner
Hanna Rybak
- JULY 20**
Laurie Figg
Sara Levitsky
Barbara Redstone
Lucia Shields
Henney
Stephanie Wineman
- JULY 21**
William Edmunds
Rachel Khankin
Adam Levitsky
David Rotter
Jeffrey Siegel
Ilene Stutman
Lucy Weiner
- JULY 22**
Sydney Blau
Maxwell Margolis
Albert Resnick
Henry Templin
Susan Yashinsky
- JULY 23**
Sandra Beigler
Meredith Frenkel
Karen Kaczander
Carey Kalmowitz
Steven Menken
- Mernalyn
Owen Reibschied
Frances Rose
Bruce Saperstein
Gillian Tamaroff
Daniel Victor
Brooke Wolf
- JULY 24**
Isaac Hirsch
Jeffrey Howard
Alexander Israel
Craig Matichuk
Abigail Perehodnik
Mitzi Robinson
Karen Siporin
- JULY 25**
Barbara Bradfield
Mila Muchnik
Wendy Roth
- JULY 26**
Samara Chodock
Courtney Elson
Sydney Fong
Lauren Herrin
Paige Vieder
Mary Lou Zieve
- JULY 27**
Audrey Deutch
Thea Kayne
Oakley Most
Ava Paige
Ari Richardson
Elizabeth Strumban
- JULY 28**
Christa Dash
Max Richardson
Carol Rothstein
Richard Schwartz
Mark Traurig
Matthew Weiner
- JULY 29**
Michelle Alexander-Gutman
Lainie Epstein
Jay Kreindler
Nanci Lasser-Fearon
Michelle Posner
Mitchell Schwartz
Arden Shwayder
Debbie Simon
- JULY 30**
Lillian Berg
Daniel Canvasser
Gabriella Fill
Ann Flood
Jeffrey Graff
George Leach
Scott Monchnik
Beverly Peterman
Esther Weitzman
- JULY 31**
Parker Brandt
Anne Canvasser
Thomas Jablonski
Payton Purther
Holly Rotter

JULY ANNIVERSARIES

- JULY 1**
Patty and Dale Frenkel
Amy and Robert Horwitz
- JULY 2**
Julie and Steven Fink
Alison and Aaron Goldstein
Alexandra and Andrew Weitz
- JULY 3**
Julie and Jerry Pelton
Marie and Edward Risov
- JULY 4**
Jill and Norman Fill
Eleonor and Jeffrey Jenks
Carol and Evan Rothstein
- JULY 5**
Sheryl and Joseph Inwald
- JULY 6**
Harriet and Richard Shapack
- JULY 7**
Jeanette and Mark Hauser
- JULY 8**
Suzanne and Robert Bluestein
Lisa and Robert Katzman
Suzanne and Allan Lasser
Karen and Steven Siporin
- JULY 10**
David and Ellen Freedman
Amy and Michael Margolis
Kenneth and Susan Weiner
Alice and Mark Zacks
- JULY 11**
Trayce and Randall Fenton
Jennifer and Ryan Soble
- JULY 12**
Jean and Howard Dubin
Judy and Scott Roberts
Geraldine and Richard Sills
- JULY 14**
Nicole and Joel Mazur
- JULY 15**
Elizabeth and Eric Engelson
Jane and Edward Weberman
- JULY 18**
Barbara and Baker Urdan
- JULY 20**
Erica and David Brown
Karen and Matthew Turner
- JULY 21**
Barbara and Steven Kohler
- JULY 22**
Paula and John Harris
Victoria and Jon Sloan
- JULY 23**
Sara and Michael Minkin
- JULY 24**
Connie and James Colman
Julie and Kenneth Gutman
Laura and Seth Herkowitz
Elizabeth and David Kaner
Irene and Richard Soble
- JULY 25**
Maxine and Laurence Baker
Karen and Bruce Kaczander
Alissa and Steven Vanderkooi
Jennifer and Benjamin Werbling
- JULY 30**
Harriet and Mark Cooperman
- JULY 30**
Nancy and Don Powell
Melissa and Garret Schiller
Erika and Gregg Solomon
- JULY 31**
Frances and Melvin Glaser
Norma and Richard Shaw
Carolyn and Mark Koblin
Estelle and Mark Kwartowitz
Janelle and Raymond Rosenfeld

SUNDAY, JUNE 3 – SATURDAY, JUNE 9

RAY MAURICE ABRAMS ISRAEL ABRAMSON SOL AGER * SIDNEY L. ALEXANDER * SOPHIA B. ALEXANDER * JOSEPH ARONS * GERTRUDE D. BEERBOHM * MALVINA BERG * NEWTON BERNSTEIN GLADYS BEZNOS * IRVING BICKMAN * NORMAN BRODE SHELDON BRODLEY * JOHN L. BROWN	SOLOMON BURG * HENRY M. BUTZEL * HARRY E. BYRON * HAROLD P. CHAPMAN * HENRIETTA COHN * IDA HELEN COPINSKY CELIA DORF GERTRUDE DWOSKIN * EUGENE J. EPSTEIN * HAROLD A. EPSTEIN * MORTON B. FARRELL * BEN B. FENTON * GEORGE FISCHER AUDREY FISHER BETTY JANE FISHER	JOSEPH FLASCHNER ROBERT LEE FLOYD COLEMAN FRIEDMAN * NELLIE GOLDBERG * ETHEL BARNETT GOLDFARB * BESSIE GOLDFINE * ALICE JEAN GOTTESMAN ROSE GREENBERG HARRY HERKOWITZ * BENJAMIN IMBER DAVID JONES WILLIAM KAHN * GLORIA KALLMAN	NORMAN JEROME KATZ * ELTON R. KELLER RUTH HELEN KLEIN JESSE KOENIGSBERG * MENDEL KORN RUTH KORN * SUSAN KRAMER * SCOTT KRANDALL BESSIE KROLIK * MAURICE E. LAKSER SIDNEY LAMM NORMAN LEE SHIRLEY LEPLER * LUBA LEVENTHAL SARAH LEVIN	* SUSANNE JACKSON LEVY * SIMON LOEWENSTEIN * LILLIAN LUMEL ABRAHAM MARCUS * JOSEPH J. MARKS JOHN MAYER JANELLE GUNN MCCAMMON * ROSA HARRIS MILLER JEANNETTE MYERS * CHARLES EDWARD NATHANSON KLARA NOVOSELSKAYA DORA OER	* DAVID OPPENHEIM ANTONIO PANGRAZIO BERNARD PASSER MARY POPKIN MORRIE POSEN BARRY RAVITZ ALVIN REIFMAN ROBERT ROY ROBINSON * GRACE SCHREIBER ROSMAN MILTON J. ROSS JOSEPH SARAQUSE * SANDRA J. SCHOLNICK HERMAN SCHONBERG * ESTHER S. SCHUSTER	HARRIET SHAPIRA MARILYN PATRICIA "PAT" SIEGEL * HARRIET G. SIMON DR. JACK SOLOMON JESSE A. SONN * EDITH SOUCHAL CARRIE SPERLING * DORTHEA LIND SWADE LEONARD WHITE SADIE WOLBERG * MICHAEL ALAN WOLF ANNE WOLMAN * IDA WEINER ZLOTNICK
---	--	--	--	--	--	---

SUNDAY, JUNE 10 – SATURDAY, JUNE 16

* JACOB ALEXANDER * MORRIS E. BACHMAN * SIMON S. BAER ANNETTE BECHEK * ROSE BENSMAN * BETTY G. BINDER FLORENCE BLAU * BERTHA S. BLETSTEIN * DR. FREDERIC A. BLOCH * MARY BLOOMGARDEN * ELAINE CANVASSER * TILLIE SAZZMAN COHN	BESSIE SHERBIN COLUMBUS * ROSE SHERE COOPER DANIEL DARNELL, JR. * FANNIE DAVIDSON * PROF. CHARLES P. DAVIS KAY FINK MARJORIE SWITOW FISHER BERTHA FREEDMAN * DORA LUFT FREEMAN * ROSE N. FRENKEL	* JOAN FROMM * THEODORE GLASS * JACK DUKE GOLDMAN HERBERT GOLDSTEIN * BERTHA GREENBERG SAUL GREENFIELD * MARION HANDLEMAN KATIE HARTMAN MARK "TED" JACOBSON SUE KABAKOV * ALFRED C. KAUFMAN * JOHN S. KETCHEL	BELLE COHEN KOPPEL BENJAMIN S. KOTT * JACOB KOVINSKY MARTIN LEON LAKER * DAVID W. LEACH * HELEN M. LENHOFF THERESA LEOPOLD * GEORGE LEVENSON * HENRY LEVITT HAROLD "MARTY" MARTENS * SARAH LEVY MILLER	MARION GORDON MOSKOVITZ * BETTY NEDERLANDER TOBA G. NEUMANN PHILIP OSLANDER * ROSE LIPPMAN PARNES * ALFRED WILLIAM PAYSON BLANCHE POLLACK LEONARD PRIEST * HERBERT N. REINHEIMER HOWARD RICE MOLLIE ROSEN	EMANUEL ROTHMAN CLAIRE RUDICK * FANNIE B. SAXE MINA SCHEY * THEODORE SCHWARTZ * RAY A. SHAPERO FLORAIN FRANK SHIELDS CLARICE SIDLOW * AARON SILVERMAN * OSCAR SILVERMAN TAMARA "TIMMY" SILVERMAN	* PEARL SHERMAN SLOMAN * ROSE SMITH * MAX SOLOMON AIDA ROSEN SPERLING WILLIAM LOUIS STEIN * FAY STERN KERMIT STEUER CELIA SUGARMAN * PROF. JASON H. TICKTON * BEVERLY PRENTIS WAGNER MARTHA WURM
--	---	--	---	--	---	---

SUNDAY, JUNE 17 – SATURDAY, JUNE 23

ANNE ACKERMAN * HELENE ARONSSON ELLEN BATEMAN * NORMAN H. BIRNKRAUT * YETTA BISGEIER * DAVID M. BLANKE ELSIE LANG BLOCK ABRAHAM BLUTH MARY BRANDWEIN RUTH HERTZ CANNON * JACOB DENENBURG	* MIRIAM O. DIZIK * CLARA EHRLICH ADELE FAITLER * SYLVIA KRELL FISHER ELLA FOLTYN * LENA FRANK * DOROTHY GIRER * GARY M. GOODFRIEND RUTH L. GOODMAN * MABEL GOTTESMAN MICHAEL GREENE	PESYA GRISHGORINA JACOB GROBMAN * MICHAEL GUZ * HILDA C. HARTMAN * WERNER HEILBRUNN ROSE HOWARD BERNARD HAROLD JENKS * JACOB B. KAPLAN * RALPH KARDEN * RUTH S. KLEIN	MARIAN KOZLOW * DAVID KURZMAN MARY LABAN TRUDE S. LEUBUSCHER JERRY F. LEVINSON SAMUEL LINSKY * IRETA LURIE * ETHEL MACWILLIAMS * VICTOR MERDLER * RUDOLPH MEYERSON KENNETH MORRIS	* LOUIS S. MUSLINER * FREDERICK NEDERLANDER CRAIG NEUNER JIM PAUL * JENNIE PITKOWSKY * DAVID D. ROLAND * EMANUEL M. ROSENTHAL MARCIA ROSIN * RUTH ROTHSCHILD IRVING N. RUBIN * BENJAMIN SIEGEL	MAURICE SILLS TOBI SISMAN RICHARD SITRON AARON SLAPIN ROSE SMARGON * BERNARD SPIEGEL * HARRY HOWARD STERNBERG * KATE TISCHLER SUSAN VELICK MAX WEISBROD	* ANNA WILKUS * DR. LAWRENCE CHARLES WOLF * CARL ZOHOTT
--	--	---	---	--	---	--

SUNDAY, JUNE 24 – SATURDAY, JUNE 30

FEIGE ACKERMAN MILDRED CHARNAS LUCILLE B. COHEN BERTHA COLMAN CLARA CZISKE LILLIAN DUNN RUTH FRANKLIN EINSTEIN ALEX FELDMAN BELLA FELDMAN * LOUIS FRANKENSTEIN EDITH FRIEDMAN * LEON GOLDBERG * BARBARA "BOBBY" GOLDBURG	* LOUIS ALTMAN GOLDENBERG * FRANCES GRABOW GOLDMAN PEARL GREENBAUM MILDRED "MICKEY" GREENFIELD * ALLAN GREENSPAN * ABE GREENSTONE * LILLIAN MILLER GREENSTONE BEN W. GRUSKIN ARLENE EDER HARRIS LILLIAN HECHTMAN * DAVID I. HUBAR	* STANLEY IMERMAN * ALFRED L. JACOBS * HILDA KIMMEL * MEYER KLEIN THERESA KOENIGSBERG * PAUL KOVINSKY * SYLVIA G. KUTTNAUER RUBINER HAROLD LEVITT FRANCIS MACKIE SHERRY KIM MALOFF IRVING MARK * JOSEPH M. MELLON * FANNY MESHORER * DESSIE MEYERS	SEYMOUR S. MORRIS WERNER OSTEN REBECCA PEARLMAN MARY PLOTNIK SEYMOUR POSNER ESTHER RABB ALEXANDER RAZDOLSKY * SADIE RICE * SARA DUSCOFF ROBERTS * ALVIN M. RODECKER JUDITH ROGOFF DR. JACQUES ROSENFELD * SUZANNE ROSIN	* ALEX RUBIN KARL RUDICK * THEODORE B. SALLLEN * SARAH LEVITT SAPERSTON BERNICE SCHECHTER * HANLEY G. SCHREIBER * SADIE R. SCHUBOT STUART M. SCHWARTZ * RUTH SHAPERO * LOTTIE HELPERT SHAPIRO SARAH SHERMAN * LOUIS A. SHERWIN ELIZAVETA SHLEYPAK	LEWIS "SKIP" SIEGEL * FRED F. SIMMONS ETHEL SLAPIN BORIS SMORGONSKIY SYDNEY STERN * EUNICE STONE RALPH STONE BORIS STUTMAN * AMSON C. TABOR * CELIA KAHN TOUFF * LOUIS O. TURNER JOSEPH WALDMAN * FAYE EHRLICH WALLACH SANFORD WEINER * LOTTIE WEISMAN	* MAX WEISS GERTRUDE WEITZMAN * MARJORY "RUTH" WEST * GEORGE WISE * SHIRLEY WITUS * MATHEW M. WOLFE MICHAEL ZAMET * BERNARD ZUPMORE
--	---	--	---	---	--	---

WE NOTE WITH SORROW THE PASSING OF...

ARNOLD A. TANZMAN

Husband of Marcia Tanzman. Father of Jay (partner Anna Krylov) Tanzman and Carol (Michael) Kuppe. Grandfather of Joseph, Madison, and Carly Kuppe. Brother of Dr. Elaine (Paul) Russman. Brother-in-law of Nancy and Martin Myers.

LOIS LANDAU PEARL

Mother of Larry (Debbie) Landau, Mark (Debbie) Landau, Danny Landau, Marc (Gwen) Pearl, Jeffrey (Erica) Pearl and Todd (Lisa) Pearl. Grandmother of David Landau, Andrew (Judy) Landau, Ryan (Fiance' Margot Peck) Landau, Aaron Pearl (fiancé Emily Grant), David (Amy) Pearl, Rachel

Pearl (fiance Ben Meyers), Elle (Nick) Levins, Amanda Foster and Chelsea Foster. Great-Grandmother of Ethan Pearl, Aiden Levins and Jackson Levins. Sister of Carol Coskey.

NORMAN SAMPSON

Uncle of Brooke (Jeff) Margulies, Gayle (Alan Edelson) Lasky Edelson, Julie (Sam) Beznos, Dylan, Elle, Blake Beznos and Whitney Margulies. Brother-in-law of Gladys Sampson.

RITA SCHWARTZ

Mother of Elissa Schwartz, Darren (Lena) Schwartz. Grandmother of Sean Schwartz, Carlise Rodriguez, Milo Schwartz, Drake

Schwartz and Baxter Schwartz. Sister of Elaine (Nathan) Kittner, Robert Tessler, Sydney Newberg and Sherry Mekir. Aunt of Marlene Thav, David (Meagan) Tessler, Jeffrey (Fiancee Courtanie Gaddis) Tessler, Lauren (Steven) Crummel and Gail (Hank) Sandweiss.

SARA KAY

Wife of Sidney Kay. Children: Francine (Steven) Menken Sheldon Kay. Grandmother of Dayna Menken (partner of Alec Williamson) and Zachary Menken. Sister of Molly Janus, Harry Goldman, Al Goldman, and Hal Gordon. Sister-in-law of Maury Katzman.

BETTE D. RUBIN

Mother of Leslie Slatkin and Mary (Fred) Schepsi. Grandmother of William (Ashley) Slatkin and Nicholas (Olivia) Schepsi. Great-Grandmother of Avi and Judah Slatkin and Lily Schepsi.

LOIS HAMBURGER

Mother of Judy (James) Burdick, Douglas (Wendy) Hamburger and Amy (Fred) Cohen. Grandmother of Dr. Andrew Rubens, Laura Rubens (Alexandra Hartman), Jeffrey (Christina) Cohen, Katie (Shayn) Diamond, Paige Hamburger and Justin Hamburger. Great Grandmother of Austin Diamond. Sister of Walter (Marilyn) Wolpin.

SUNDAY, JULY 1 – SATURDAY, JULY 7

DENNIS M. AARON	* ROSLYN FRANK EDDY	* ISADORE E. HAMBURGER	MICHAEL JACOBY	* MARSHALL MILLER	MERLE ROSIN	* ROBERT EDGAR
* HENRIETTA ALEXANDER	PAUL FEILER	* ADELAIDE K. HARRIS	CECIL KANAREK	DIANA NOVACK	* RICHARD ROSIN	STEINBERG
* DORA ARONSSON	ROBERT FISHER	* NORMAN HELPERT	DR. CHARLES KESSLER	MAXINE ORDOWER	CARLA RUDORF	* ANN LEVY STERNBERG
* HARRY B. ASH	* HIRSH FRANK	* RABBI RICHARD C. HERTZ	EDITH KOTTLER	* DAVID KEITH PAGE	ARTHUR SCHOENBART	* DR. DAVID I. SUGAR
NORMAN BARIL	DR. JOSEPH S. GANTZ	* BERNICE KAHN HOPP	* ABE C. LAPPIN	* ESTHER PELTON	* LEONARD M. SHARE	TED ALAN TATCHIO
MADELINE BELKIN	BESSIE GARLOCK	* HARRY HYMAN	HELEN EDER LATTIN	* JOSEPH N. PRENTIS	* ROSE SHULMAN	* HENRY WEINBAUM
* SAUL J. BIRNKRANT	ARNOLD GARVIN	* SIDNEY IMERMAN	FRED LAX	* SAMUEL J. RANDS	MELVYN "MEL" SILVER	DAVID WEINSTEIN
IRVIN COHEN	RICHARD DREW	* WILLIAM B. ISENBERG	ANN LAZAROFF	JEROME REISS	HARRY SILVERMAN	BARBARA WEITZMAN
ALBERT DICKEN	GERSHENSON	* CLAIRE LOUISE JACOB	MAX LUFTSCHEIN	DONALD COLMAN RIGER	ROSA HELBURN SIMON	BASS
* SEYMOUR DUNITZ	SAMUEL L. GOODMAN		* C. HARRY MALBIN	* ALBERT C. ROSENBERG	* BERNARD SLOAN	ROSE WOLFE

SUNDAY, JULY 8 – SATURDAY, JULY 14

ADA ABRAMSON	* MARCUS COHEN	* HOWARD FREEMAN	DR. HARRY ARTHUR	MINNIE MILLMAN	FLORENCE SADOFF	IDA STERN
* JEROME M. ASH	* BERT COLMAN	* GORDON S. GARD	HELLER	L. A. MIZELL	* ADELE SANDLER	* ROSE S. SUGAR
DORA BACHMAN	J. RICHARD COOPER	* HARRY GITTLEN	* RENDA HERTZ	* JEWELL P. MORRIS	* MANUEL M. SCHUBINER	KURT TRAUB
MELVIN BARNETT	* ISAAC COPINSKY	MARGARET GLASSMAN	TED KACZANDER	MAURICE NAGLER	* JEAN DORMAN	HELEN E. WALDBOTT
JACK BELKIN	* JOSEPH I. DIZIK	* ABRAHAM L. GOLDMAN	SARA KASLE	SHIRLEY PALUGYAY	SCHWARTZ	DORA WIDENBAUM
* JULIUS BERG	MARGARET ELKELES	MARGARET GOLDSTEIN	* ROSE ZITOMER KASLOW	* HERBERT REINHEIMER	* RAE SHAEVSKY	* JENNIE SWEET WISE
ROSE BERK	DR. MENDEL ETTINGER	STEPHEN M. GOLDSTEIN	* IDA KATZMAN	SARAH REINICKE	EDWARD EARL SINGER	* SIDNEY J. WOLF
CLARA BIRNBAUM	CHESTER FIGG	MARTY GOROSH	PEARL SCHIFF KOTZEN	* JEANNE SCHILLER	* EDITH SLATKIN	JOSEF ZIMILIS
NETTIE BRENNER	MICHAEL FISHMAN	DR. LEO H. HARRIS	* HAROLD KOVINSKY	ROBERTS	ELEANOR LEHMAN	
MIRIAM CHAIT	HENRIETTA "MIDGE" FRANK	BENJAMIN HARTMAN	JESSIE D. MAAS	EDWARD ROSE	SLOMAN	
* MINNIE CLAMAGE			BEVERLY J. MILLER	EMIL ROSE	* IRVING STEINMAN	

SUNDAY, JULY 15 – SATURDAY, JULY 21

* PAULINE WALTERS	* HARVEY WILLIAM COLE	EVELYN GLICKSBERG	MARY RITA KESSLER	DAVID MONDRY	* JENNIE PEARL ROTH	* FAY SUCHER
ALBERT	ARTHUR COLMAN	* HELEN GOLDENBERG	* BERNICE KONIKOW	LANICE MORGANROTH	* DR. NORMAN N. RUBENSTEIN	BERTHA VOLOSCHIN
* HARRY ALVIN	SHIRLEY CUTLER	DR. ROY GOODMAN	LARRY LABAN	LESTER T. NEIMAN		MILTON CHARLES WAGNER
JEFFREY N. ANBENDER	MILTON H. DRESNER	PHILLIP GOREN	* HERMINA LEIB	* REUBEN NELSON	* DANIEL A. SAXE	* S. JOSEPH WALLACH
* SIMON A. ASCHER	ABE EMMER	DOROTHY GREEN	* HARRY B. LEVY	* MAX NOSANCHUK	SUSAN SCHECHTER	* SIDNEY WEISMAN
* MAXINE GRABOW	* MARY EVELYN FISHER	RICHARD HAMBURGER	* IDA LURIE	FRED J. SCHILD	* ALVIN E. SCHREIBER	* REBECCA WENST
BARON	GOLDIE FLEISCHER	ELLEN CAROL HARRIS	HELEN MALTZ	* MEYER L. PRENTIS	DR. DAVID SCHWARTZ	ROSE WERNEY
RALPH S. BASS	* ELLA BEER FRANK	* SAUL HARRIS	IDA MARCUS	HARRY PREPSKY	ALLAN SILBER	* IRVIN YACKNESS
LILLIAN BLEIER	JULIA ZWEIFLER FRITZ	* JOHN ALFRED HEAVENRICH	JOSEPH MARKEL	* GEORGE REINITZ	* MILTON D. SMITH	FREDA ZIEVE
* BELLE BROWN	JACKIE GAGE	SY HOWARD	MARTIN MARKS	MARJORIE ROSE	SARAH SNITZ GALER	DR. MAURICE I. ZOZ
SAM CALFIN	TILLIE GARDNER	NORMAN KANTER	* ADOLPH MEYERS	* MOSES ROSEN		
ELIZABETH CHAPMAN	* ROSE GLADSTON	* ISRAEL H. KAPLAN	JACK I. MILLER	* JOSEPH T. ROSENBERG	* JUDGE HARRY SOUCHAL	
SAUL CHODUN	GARELIK	* IZIDOR KATZ	MAX MILLMAN	* BERTHA ROSENFELD	LYDIA SPERBER	
SOL COHN	* MILDRED B. GERSTMAN	MINNIE KATZ	JERRY MONBLATT	* RENA C. ROSENFELD	JAMES ALAN STARK	
	HARRY J. GLASSER			SOL ROSS	MINNIE STEINBRUCK	

SUNDAY, JULY 22 – SATURDAY, JULY 28

STANLEY ABBOTT	NANCY DWOSKIN	* STEPHEN N. GERSHENSON	HELENE HURWITZ	ARTHUR LEVINE	* BEN PETERMAN	* SAM SHULMAN
* CARL C. ADAMS	* JACOB ELLENSTEIN	* WILLIAM GORDON	SUSAN INWALD	CAROLYNNE SUSAN LICHTEN	* JULIUS RING	* SOPHIE SIEGEL
DINAH AIDENBAUM	IRVING FEIGENBAUM	* RICHARD HARRIS	GEORGE KANTOR	EDWARD M. ROSENTHAL	RHEA ROBERT	BEVERLY STERN
* WILLIAM ALEXANDER	* ABRAHAM J. FEINBERG	GOTTESMAN	LEONARD LOUIS KATA	* ETHEL LIPPMAN	EDWARD M. ROSENTHAL	SKILKEN
* GEORGE H. AMBER	ALAN FORMAN	* EDNA ROTH GRANT	IDA KATZ	HEDDY LOWENTRITT	* LILLIAN ROSENTHAL	* MARGARET SMITT
ALLAN BARRON	* DAVID FREEDMAN	RICHARD GRANT	MORTON KATZ	MILDRED MARTIN	* DORA RUBINSTEIN	TUNYA SORSER
BERTHA BIRKOW	ESTHER FREEDMAN	LILLIAN HARRIS	* HYMAN KATZMAN	* RICHARD DAVID MITCHELL	* ROBERT RUBINSTEIN	HERMAN STARK
BERNARD BOREN	JULIA FREEDMAN	* HARRY LOUIS HERSHBERG	MILTON KAUFMAN	JAMES M. NEDERLANDER	* ISIDORE SAPERSTON	WERNER E. STARK
ABRAM CHAPMAN	* LAWRENCE FREEMAN	ABRAHAM HOCHBERG	* SARAH DIANA KETCHEL	GERD OSTHEIMER	* SONIA SCHAFFER	HERMAN TOLL
SAUL COHEN	MOLLY GELLER	RUTH E. HULL	RICHARD KLEIN	STEPHANIE WYNN	MAX M. SCHWARTZ	* HENRY M. WEIL
ANNA CURTIS	MORTON GENSER		JEANETTE KOCH	KRASNOW PARRISH	PHYLLIS SCHWARTZ	SYLVIA WEISBROD
LAREY DRESNER				SOPHIE PENCHANSKY	* SHELDON SCHWARTZ	MINNIE WEISS

SUNDAY, JULY 29 – SATURDAY, AUGUST 4

* CECILE SIEGEL AMBERG	* ISAAC FISHER	* PAULINE STEINER	HOWARD KEITH	* NATHAN D. ROSIN	* ALBERT SOUFRINE	EVELYN D. WEINSTEIN
* SELMA E. ARDEN	DR. HARRISON J.L. FRANK	HARRIS	LUPILOFF	SHANDEL ROZENCWEIG	* BENJAMIN STEIN	* KURT WEST
* SARALYN BALAN	LEWIS FREEDMAN	RUBEN ISAACS	* BERNICE MAHLER	YITZAK ROZENCWEIG	DEBRA E. STEINBERG	* LOUIS WINKELMAN
MAE BERG	DR. MORRIS FYNKE	CORNELIA JONES	ALFRED MILLER	MATTHEW SALZENSTEIN	SAM STOLER	* MAX B. WINSLOW
* ROSE A. BLATNIKOFF	MORRIS GERBER	* LILLIAN KANTERMAN	* MOLLIE MOERS	DR. HARRY SAND	* JEROME SUPERSTINE	BENJAMIN E. ZIEVE
* WILLIAM BORIN	* AARON IRVING GESLIS	* NATHAN KATZ	* KATHYRN NEVINS	NICHOLAS SCAVONE	* LOUIS PHILLIP SWEETWINE	* ROSLYN E. ZUCKERMAN
* CHARLES M. CANVASSER	MORTON KNOPPER	ROSLYN KAUFMAN	SEMION RACHLIS	* DEBORAH SPRINGER	* MICHAEL A. WAINSTOCK	
MARGARET COHEN	JEFFREY KREINDLER	MORTON KNOPPER	HARRY RADOM	SCHMIER	RICHARD WALDBOTT	
MAX CONWAY	ANITA R. LEWIS		* ETHEL W. ROBINSON	DIANA SILLS	REBECCA WATNICK	
ROBERT S. DUNN			JACK ROSE	* BENJAMIN SIMON		
* SOL ELLER			SHIRLEY ROSE	* ESTHER SNYDER		

**RAYMOND & SHIRLEY
ABRAMS YOUTH GROUP
RECREATION FUND****IN MEMORY OF**
HERB KAUFMAN*Wendy & Henry Abrams and Family*
VICTORIA ARTHUR
*Karen & Alan Lowen***RABBI BRUDNEY
DISCRETIONARY FUND****IN MEMORY OF**
JOHN REDFIELD*Dr. & Mrs. Richard Schwartz*
CONTRIBUTION
ELIZABETH RAZDOLSKY
JESSIE STERN**DONALD CANVASSER
MEMORIAL FUND****IN MEMORY OF**
CANDY SHERMAN'S MOTHER
PAUL FRIED'S MOTHER
ZENIA SINGER*Sandra & Thomas Millman*
IN HONOR OF
50TH ANNIVERSARY OF
DR. & MRS. CHARLES TAYLOR
*Sandra & Thomas Millman***ROBERT & BEVERLY
CANVASSER JEWISH
ADVENTURERS FUND OF
TEMPLE BETH EL****IN HONOR OF**
SPECIAL BIRTHDAY OF
BOB CANVASSER
*Yolanda & David Tisdale***CARING COMMITTEE FUND****IN MEMORY OF**
ELINOR BLUMBERG
*Shelley & Neil Chaness***HERMAN & BEA DICKSTEIN
MEMORIAL YOUTH FUND****IN HONOR OF**
BIRTH OF GREAT
GRANDDAUGHTER OF
ARNOLD & PATRICIA HARTZ
*Kim Dickstein***RABBI LEO M. FRANKLIN
ARCHIVES FUND****IN MEMORY OF**
JACK MACWILLIAMS
*Suzi MacWilliams***FRIENDS OF THE PRENTIS
LIBRARY FUND****IN MEMORY OF**
ALAN HURVITZ
JESSIE STERN
*Patti & Rick Phillips***GENERAL OPERATING FUND****IN MEMORY OF**BERNARD ALTER GOURWITZ
Pam & David Gourwitz
FREDERICK A. BIRD
Alice & Mark Zacks
JESSIE KAUFMAN STERN
Lisa Nederlander
JOHN REDFIELD
Brenda & Sandy Passer,
Marjorie Hecht Simon
LOIS PEARL
Joan Brode
RAE RUBIN
Lois R. Weintraub
MIRIAM ZACKS
Alice & Mark Zacks
PAUL CORBY
Margot & Herb Gardner
MILFORD SINGER
HERB KAUFMAN
ZENIA SINGER
Brenda & Sandy Passer
IN HONOR OF
MICHAEL FREEDMAN
MARION FREEDMAN
Sharon Kolchinsky
ELINOR ANN BLUMBERG
Jamie Maniloff
IN HONOR OF
100TH BIRTHDAY OF
ETHEL KROSKY
Sharon Kolchinsky
A CONTRIBUTION
*George Chaney***GLAZER ELEMENTARY
SCHOOL ADA S. & RABBI
B. BENEDICT GLAZER
MEMORIAL FUND****IN MEMORY OF**
JOHN REDFIELD
*Mania & Mark Glazer***PAUL & SONIA HANDLEMAN
MEMORIAL FUND****IN MEMORY OF**
JOHN REDFIELD
MILLIE GREENBERG
*Rose & David Handleman***RABBI RICHARD C. & RENDA
HERTZ GIFT OF LIFE FUND****IN MEMORY OF**
DOUGLAS SCHUBOT
HERB KAUFMAN
JOHN REDFIELD
MERLE HARRIS
SOL GARBER
Shelly & Peter Cooper
ROSE GOODFRIEND
*Eleanor Blum***IN HONOR OF**
LINDA MERKLE AND HER
COMPLETE RECOVERY
*Shelly & Peter Cooper***HIGH HOLY DAYS
DONATIONS
A CONTRIBUTION***Sharon Kolchinsky***HOWARD & CELIA
JACOBSON MEMORIAL FUND
FOR THE BETH ELDERS OF
TEMPLE BETH EL****IN HONOR OF**
BIRTH OF EMUNAH WEDES
*Phyllis Kaplan***JEWISH WAR VETERANS IN
SUPPORT OF LIBRARY****A CONTRIBUTION**
*Jewish War Veterans***CANTOR RACHEL
GOTTlieb KALMOWITZ
DISCRETIONARY FUND****IN MEMORY OF**
JESSIE STERN
*Dr. Sheldon Stern & Family***IN HONOR OF**
CANTOR KALMOWITZ'S
PARTICIPATION IN ELI AND
EVAN'S B'NAI MITZVAH
*Elyse & David Foltyn***CANTOR RACHEL GOTTlieb
KALMOWITZ MUSIC FUND****IN MEMORY OF**
ELINOR BLUMBERG
Phyllis Loewenstein &
Sheldon Plotnik
HENRIETTA WEISBERG
HERB KAUFMAN
JOHN REDFIELD
MILFORD SINGER
*Ken Korotkin***IN HONOR OF**
CINDY BOLOKOFESKY
Carol & Steve Tarnowsky &
*Family***THE BABS & HERB KAUFMAN
LISTEN IN FUND****IN MEMORY OF**
HERB KAUFMAN
Lucy & Ray Henney, Marion and
Michael Freedman, Sandra and
Michael Hermanoff
IN HONOR OF
VICTOR AGUILAR'S 30 YEARS OF
SERVICE AT TEMPLE
*Judge Katherine Hansen***ELLIN & HAROLD LAWSON
YOUTH INSTITUTE FUND****IN MEMORY OF**
HERB & BABS KAUFMAN
LANDAU PEARL
Mrs. Ellin Lawson
LOIS LANDAU PEARL
*Ellin, John and William Lawson***GERALD LEVIN
MEMORIAL FUND****IN HONOR OF**
BIRTHDAY OF LENNY NEWMAN
*Randie Levin***MARSHALL & PHYLLIS
LOEWENSTEIN FAMILY
CAMPSHIP FUND****IN MEMORY OF**
ALAN HURVITZ
Karen & Alan Lowen
JESSIE STERN
*Dana & Rick Loewenstein***ISADORE & FRANCES
MALIN INTERFAITH
ACTIVITIES FUND****IN MEMORY OF**
BENJAMIN HARTMAN
ISADORE "IZZY" MALIN
KATIE HARTMAN
MOLLIE ROSEN
SYLVIA SCHONBERGER
Elaine & Mark Schonberger &
*Family***THE MICHELSON-HABER
MEMORIAL FUND****IN HONOR OF**
25TH WEDDING ANNIVERSARY
OF DOUGLAS & WENDY
HAMBURGER
*Barbara & Jonathan Haber***RABBI MILLER
DISCRETIONARY/EXPENSE
FUND****IN MEMORY OF**
ANNE M. GOLDSTEIN
Carole Goldstein
JOHN REDFIELD
Jane & Richard Schwartz
ELINOR BLUMBERG
Carol & Steve Tarnowsky
JESSIE KAUFMAN STERN
Dr. Sheldon Stern & Gayle
Eubanks & Family
IN HONOR OF
THE B'NAI MITZVAH OF
ELI AND EVAN FOLTYN
Elyse & David Foltyn

**HARRY & SALLY
NOSANCHUK CARING
COMMUNITY FUND**
IN MEMORY OF

HENRIETTA G. WEISBERG
Linda, Scott, Eric and Hilary
Sircus, Harry Nosanchuk
ELINOR ANN BLUMBERG
LOIS LANDAU PEARL
MILFORD SINGER
MYRON MIKE HANDELSMAN
Linda, Scott, Eric and Hilary Sircus
MARION WEISBERG
HERBERT KAUFMAN
HAL F. ROSSEN
Harry Nosanchuk

IN HONOR OF

ALAN, SCOTT, MARISSA &
AARON LOWEN
Karen Lowen
BIRTH OF CAROL & SIDNEY
LIFTON'S FIRST GREAT
GRANDCHILD
Harry Nosanchuk
ENGAGEMENT OF STACIE BLAIR
CAPLAN & JOSHUA BERNARD
Linda, Scott, Eric and Hilary Sircus
RECOVERY OF HILARY SIRCUS
Lori & Mark Cohn
SPEEDY RECOVERY OF
DR. ALBERT SALZMAN
Mr. Harry Nosanchuk

**JOHN & ARLENE REDFIELD
MEMORIAL FUND**
IN MEMORY OF

JOHN REDFIELD
Lynne & Jeffrey Obron, Lois &
Avern Cohn, Harriet Colman,
Penny & Larry Deitch, Linda
& Robert Finkel, Aviva & Dean
Friedman, Maxine & Ronald
Grumet, Jill Greenspan Gun,
Philip Kessler, Barbara Kux,
Kathy & Michael Laffer, Barbara
Mayer, Lynn Rosenberg Mayfield,
Jo-Anne & Terry Nosan, Susie
& Norm Pappas, Nancy & Don
Powell, Harriet Prentis, Joyce &
Saul Rubenstein, Rita Rubin, Ellen
& Ronny Schmier, Cindy & Melvin
Schwartz, Emily Camiener & Marc
Schwartz, Sally Soverinsky, Walter
Shapiro & Kathleen Straus,
Elaine & Bob Tell, Gwen & Evan
Weiner, Karen & Bob Weisberg,
Alexandra & Andrew Weitz,
Elayne Greenspan, Barbara Grant,
Collette Rosner, Merrilee and
Andrew Broder, Nancy and Larry
Goldman, Elizabeth & Jeremy
Modell

**SISTERHOOD BRAILLE FUND
IN HONOR OF**

GEORGE STERN, EIGHT OVER
EIGHTY HONOREE
Sandy & Lee Marks

**SISTERHOOD
PHILANTHROPIC FUND**
IN MEMORY OF

VICTORIA ARTHUR
Kelley Kennedy & Sean O'Brien

**RABBI DANIEL SYME
DISCRETIONARY FUND**
IN MEMORY OF

BENITA BORNSTEIN
Eileen Millstone
RACHEL PLUDWINSKI
Judy & Sam Jassenoff
DAVID HUBERT
Janice Vanstrien
A CONTRIBUTION
Lisa Allen

**TEMPLE BETH EL MITZVAH
PROJECTS FUND**
IN MEMORY OF

GINDA RATNER
ANNA GOLUBOVSKY
Bella & Lev Shleypak

**TEMPLE BETH EL YOUTH
WING FUND**
IN MEMORY OF

BETTE D. RUBIN
Peggy & Dennis Frank

**MAMIE & JASON TICKTON
MUSIC FUND**
IN MEMORY OF

JESSIE STERN
Jeffrey Chase & Gale Kramer

**HELEN & PAUL ZUCKERMAN
NURSERY SCHOOL FUND**
IN HONOR OF

SPEEDY RECOVERY OF
KAREN LOWEN
Ellen Bushman

Tributes: April 1- May 1, 2018

TRIBUTE FORM

Minimum contribution: \$18 per tribute. CONTRIBUTIONS ARE TAX DEDUCTIBLE

4 WAYS TO MAKE TRIBUTES

ONLINE: www.tbeonline.org/tributes

PHONE: Contact Marianne Myers at 248.851.1100

EMAIL: mmyers@tbeonline.org

MAIL: Temple Beth El, 7400 Telegraph Road, Bloomfield Hills, MI 48301

• Credit card transactions will incur a mandatory non-refundable 3% convenience fee.

• No convenience fee for debit card transactions.

PLEASE PLACE MY CONTRIBUTION IN THE FOLLOWING FUND:

In Honor of: -----

In Memory of: -----

Enclosed please find \$ _____ or charge my ☐ credit ☐ debit card

exp. date ----- sec. code -----

Name on card -----

SEND ACKNOWLEDGMENT TO:

Name: -----

Address: -----

City/State/Zip: -----

DONOR'S NAME: -----

Address: -----

City/State/Zip: -----

Phone: -----

Member _____ Non-member _____

HOW DO YOU WISH THIS TRIBUTE TO BE SIGNED? -----

TBE UPCOMING PROGRAMS/EVENTS

JUNE



01

SUMMER KICKOFF: OUTDOOR MUSIC SHABBAT

FRIDAY, JUNE 1

5:30 PM: DINNER &
ACTIVITIES7:00 PM: OUTDOOR
MUSIC
SHABBAT

Join us as we kickoff our first outdoor service of the season with a family-friendly Music Shabbat. FREE and Open to the community! Ice cream truck. Shabbat sing-a-long with Rabbi Brudney (ages 0-6). And so much more!



07

BITES & BOOKS: THOSE WHO SAVE US

by Jenna Blum

THURSDAY, JUNE 7

10:00 AM / 7:00 PM

Driven by the guilt of her heritage, Trudy, a professor of German history, begins investigating the past and unearths the



dramatic and heartbreaking truth of her mother's life. The Combining a passionate, doomed love story, a vivid evocation of life during the war, and a poignant mother/daughter drama, "Those Who Save Us" is a profound exploration of what we endure to survive and the legacy of shame. Facilitated by Rabbi Megan Brudney.



08

ECC MOVING ON CEREMONY

FRIDAY, JUNE 8

10:00 AM

It's hard to believe the end of another school year is already in the works! On Friday, June 8th we invite all families with current PK students in the Green and Orange rooms to our annual Moving On Ceremony in the DeRoy Sanctuary. After the service we'll have bounce houses, games, and brunch for our new graduates to enjoy. Contact Jen Goren at 248.851.1100 or jgoren@tbeonline.org for more information.

09

HAVDALAH IN THE PARKS

SATURDAY, JUNE 9

5:30 PM KID-ISH CLUB
MEET-UP6:30 PM SHAIN PARK,
BIRMINGHAM

Come enjoy the outdoor settings with fellow members in different locations around town. See sidebar for details.



14

BETH ELDERS INSTALLATION LUNCHEON

THURSDAY, JUNE 14
NOON

Join the Beth Elders and internationally renowned singer and pianist Avy Schreiber, while welcoming new board members. \$10 per person. Details on page 29.



14

ANNUAL MEETING

THURSDAY, JUNE 14

6:30 PM WINE & CHEESE
7:00 PM MEETING

New this year, TBE Volunteer Spirit Awards! Each year, we will bestow this award upon three Temple members who have made our Temple community holier through their volunteer efforts. See details on page 5.

15

**BROTHERHOOD
SHABBAT,
QUINQUENNIAL
ANNIVERSARIES &
GRADUATION OF
ARI CHEKAN**
FRIDAY, JUNE 15
7:00 PM



18

SLOW ROLL DETROIT
MONDAY, JUNE 18
5:30 PM MEET-UP
6:00 PM RIDE

Join the TBE bike team for our second outing of the year at Slow Roll Detroit. Slow Roll is for all ages and all skill levels, and every type of bike is welcome. The slow pace keeps the group safe and gives riders a unique perspective of our great city! Contact Susie at 248.851.1100 or sweiner@tbeonline.org for more information or to RSVP.



20

**ISRAEL @ 70
AT RIVER DAYS
DETROIT**
WEDNESDAY, JUNE 20
4:00 – 10:00 PM

Join the Metro-Detroit Jewish Community for an unforgettable celebration of Israel's historic birthday at a special GM River Days preview event on the Detroit riverfront. Don't miss this amazing afternoon and evening of Israeli-themed spirit and fun: Premier entertainment on two stages. Carnival rides, Kosher, vegan and traditional Israeli cuisine and food trucks, Midway games, crafts and activities for the whole family. For more information and to purchase tickets, go to www.israel70det.org.

HAVDALAH IN THE PARKS SATURDAY EVENINGS 6:30 PM

Join us for a new twist on our
Summer Havdalah Series!

We'll be meeting at
three different parks
during the course
over the summer.
Come enjoy the
outdoor settings
with fellow
members in
different locations
around town.

SAVE
THE DATES:

JUNE 9

Shain Park, Birmingham

5:30 PM Kid-ish Club Meet-Up

JULY 14

Village Park, Franklin

5:30 PM Kid-ish Club Meet-Up

AUGUST 11

Jaycee Park, Berkley

5:30 PM Kid-ish Club Meet-Up



Contact Danielle Gordon at 248.851.1100 or
dgordon@tbeonline.org for more information.

TBE UPCOMING PROGRAMS/EVENTS

JUNE



Join us...

FRIDAY, JUNE 22, 2018

7:00 PM

in

The Helen Vera
Prentis Lande Courtyard

*A beautiful Shabbat
service including an
aufruf – communal
blessings for the
upcoming marriage of*

RABBI
MEGAN BRUDNEY
&
ZACH BERG

*followed by a special
Oneg to
celebrate their Simchah!*



**21 BEAD & FEED
IN THE PRENTIS
MEMORIAL LIBRARY**
THURSDAY, JUNE 21
6:00 PM

Beth Stone, a lifelong beader and author of *Seed Bead Stitching*, *More Seed Bead Stitching*, and *Bead Play Every Day* will be speaking about her work and teaching participants to make a simple necklace using a variety of beads. Come hear from Beth, learn a new skill, eat, chat, and enjoy this fun make-and-take event! Contact Laura at 248.851.1100 or lwilliams@tbeonline.org for information or to RSVP. \$36 per person.



**21 DSO
NEIGHBORHOOD
CONCERT WITH
BROTHERHOOD**
THURSDAY, JUNE 21
7:30 PM
CONGREGATION
SHAAREY ZEDEK

Join the Brotherhood at the DSO's Neighborhood Concert. Featuring Brahms 4th Symphony and Dvorak Violin Concerto

with a featured soloist, the German violinist Veronika Eberle. Pre-concert, meet at G. Georges on Northwestern Highway for dinner before the show. Tickets are \$10 for Brotherhood members and \$20 for spouses or non-members. Contact Julian Prince at 248.626.6641 or broprez@comcast.net for more information or to RSVP.

**22 AUFRUF FOR RABBI
BRUDNEY AND
ZACH BERG**
FRIDAY, JUNE 22
7:00 PM

A beautiful Shabbat service including an *aufruf* – communal blessings for the upcoming marriage of Rabbi Megan Brudney and Zach Berg. See sidebar for details.



23 NINJA TOT SHABBAT
SATURDAY, JULY 28
9:30 AM

Join us for Shabbat singing followed by an awesome ninja obstacle course run by our very own Miss Alexis! Free and open to the community. Contact Rabbi Megan Brudney at 248.851.1100 or mbrudney@tbeonline.org for more information or to RSVP by July 23.

**30 FOOD TRUCK
FESTIVAL – ANNUAL
FUNDRAISER**
SATURDAY, JUNE 30
7:00 PM



FEATURED FOOD TRUCKS

Beignets 2 Go

Buffy's
Mexi-Casian
Grill

Concrete Cuisine

Fire and Rice
Paella

Good Vibrations
Gelato

Saucy Joe's

Streetside Sushi

7pm • saturday • june 30 • 2018 • TBE

Rockin' it!

Live Music with The Feisty Birds

Mixin' it!

The art of craft cocktails with award-winning
bartender, Chas Williams

Beer and Wine provided!

Goin' for it!

Feelin' lucky? Chance Raffle tickets on sale all night!

FOR TICKET AND SPONSORSHIP INFO

Contact Lindsey Fox-Wagner | lfoxwagner@tbeonline.org | 248.851.1100

FOOD TRUCK FESTIVAL CHAIRS

DANA & RICK LOEWENSTEIN

LISA & JARED ROTHBERGER

ANNE & STEVE WEINER

COMMITTEE

Jodi and Adam Becker
Dorothy and Mark Benyas
Wendy and Gary Bice
Barbra and Joseph Bloch
Cindy and Eric Bolokofsky
Jody and Dan Boorstein
Karen and Jon Borenstein
Jessica and Jeremy Brandt
Elaine and David Brockman
Rabbi Megan Brudney and Zach Berg
Alix and Steve Craig
Cathy and Jim Deutchman
Mary and Larry Epstein
Lena Epstein and Eric Medwed
Diane Farber
Robin and Michael Fenberg
Peggy and Dennis Frank
Marion and Michael Freedman
Francie and Mike Fruitman
Sue and Jeff Goldsmith
Kim and Gary Goodman
Liz and Brian Guz
Barbara and Jonathan Haber
Rose and David Handleman
Lucy and Ray Henney
Lori and Ryan Hirsch
Jennifer and Jeff Hollander
Joan and Dr. Robert Jampel
Karen and Bruce Kaczander
Cantor Rachel and Carey Kalmowitz
Lorie Kessler
Joyce and Myron LaBan
Linnea Lannon and Rick Rattner
Jill and Michael Leib
Marcy and Barnet Leland
Erin and Aaron Lewis
Maxine and Dan Lievois
Phyllis Loewenstein and Sheldon Plotnik
Karen and Alan Lowen
Beth and Adam M. Lutz
Sarah and Brian Lyngaas
Janelle McCammon and Raymond Rosenfeld
Jo-Ann MacWilliams-Wolf
Judy and John Marx
Julie Marx
Annie and Sam Mauch
Rachel Ann and Rabbi Mark Miller
Liz and J.J. Modell
Rae and Scott Monchnik
Debbie Morosohk
Rochelle Nelson
Patti and Eric Phillips
Carol and Bruce Plisner
Kim and Joe Raznik
Sandi and Claude Reitelman
Alecia and Jim Rice
Anna and Seth Rogers
Carol Ann and Warren Rose
Emily and Darren Rosenberg
Jorin and Eugene Rubin
Louise and Todd Sable
Melissa and Win Schiller
Elaine and Mark Schonberger
Cathy and Mark Segel
Erin and Neil Simmerman
Dina and Serge Sorser
Lilly and Alex Stotland
Carol and Steve Tarnowsky
Nicole and Richard Van House
Heather and Jeffrey Vieder
Gwen and Evan Weiner
Alexandra and Andrew Weitz
Alex and Jordon Wertheimer
Deenie and Mike Zonder

TBE UPCOMING PROGRAMS/EVENTS

JULY

TBE green SHABBAT

**FRIDAY, JULY 20
7:00 PM**

**Highlighting local
food and green safe
products!**



Feel free to bring in your
fruits and vegetables to share.



Please also bring any
returnable cans and bottles
you may have.

All proceeds will go toward
helping our recycling projects.

For more information, contact
Cantor Rachel at rgk@tbeonline.org
or 248.851.1100.



09

SLOW ROLL DETROIT

MONDAY, JULY 9
5:30 PM MEET-UP
6:00 PM RIDE

Join the TBE bike team for our second outing of the year at Slow Roll Detroit. Slow Roll is for all ages and all skill levels, and every type of bike is welcome. The slow pace keeps the group safe and gives riders a unique perspective of our great city! Contact Susie at 248.851.1100 or sweiner@tbeonline.org for more information or to RSVP.



14

HAVDALAH IN THE PARKS

SATURDAY, JULY 14
5:30 PM KID-ISH CLUB
MEET-UP
6:30 PM VILLAGE PARK,
FRANKLIN

Come enjoy the outdoor settings with fellow members in different locations around town. See sidebar for details.



14

**DETROIT RIVER
PRINCESS DINNER
CRUISE WITH TBE
BROTHERHOOD**
SATURDAY, JULY 14
6:00-10:30 PM

Come celebrate summer with a buffet-style dinner on the water followed with entertainment and DJ during a 2 ½ hour cruise on the Detroit river. *Details on page 25.*

20

GREEN SHABBAT
FRIDAY, JULY 20
7:00 PM

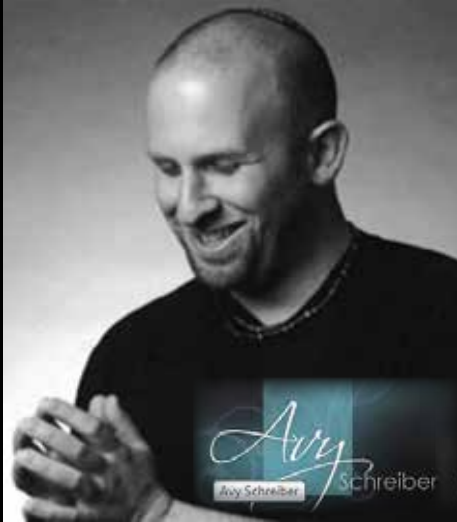
Highlighting local food and green safe products! Have a home garden? See sidebar for details..

29

**JEWISH HERITAGE
DAY AT COMERICA
PARK WITH TBE
BROTHERHOOD**
SUNDAY, JULY 29
1:10 PM



Come cheer on our boys of summer as they play the Cleveland Indians! Join the Temple Beth El Brotherhood and your fellow baseball fans for the Detroit Tigers Jewish Heritage Day. *Details on page 29.*



Beth Elders INSTALLATION LUNCHEON

**THURSDAY, JUNE 14
NOON**

Join the Beth Elders and internationally renowned singer and pianist Avy Schreiber, while welcoming new board members.

\$10 PER PERSON

Contact Danielle at 248.851.1100 or dgordon@tbeonline.org for more information or to RSVP.

BETH ELDERS 2018 – 2019 SLATE

PRESIDENT: Elaine Brockman
1ST VICE PRESIDENT: Phyllis Kaplan
2ND VICE PRESIDENT: David Brockman
RECORDING SECRETARY: Barbara Ravitz
CORRESPONDING SECRETARY: Judy Schwartz
TREASURER: Harmon Tron
ASSISTANT TREASURER: Betty Applebaum
PRESIDENT EMERITUS: Lois Freeman



DETROIT RIVER PRINCESS DINNER CRUISE with TBE Brotherhood

SATURDAY, JULY 14 / 6:00-10:30 PM

What better way to enjoy a perfect summer evening than dining on the river with the skyline as your backdrop? Come celebrate the season with a buffet-style dinner on the water followed with entertainment and DJ during a 2 ½ hour cruise on the Detroit river. Dinner includes an appetizer, main entree choices with vegetarian options, vegetable and dessert, coffee, and tea. Alcohol and pop are extra.

Pricing is as follows:

- Brotherhood member price ticket is \$57.00 per person.
- Brotherhood annual dues are \$54.00. Payment of Brotherhood dues entitles the member to 2 discounted tickets at \$57.00 each, as well as discounted tickets to other Brotherhood social activities during the year.
- The discounted non-Brotherhood member ticket price is \$67.00 per person.

Reservations along with payment must be received no later than July 2. Checks made payable to TBE Brotherhood should be mailed to Temple. Contact Julian Prince at bropez@comcast.net for more information.



JEWISH HERITAGE DAY AT COMERICA PARK with TBE Brotherhood

SUNDAY, JULY 29 / 1:10 PM

Come cheer on our boys of summer as they play the Cleveland Indians! Join the Temple Beth El Brotherhood and your fellow baseball fans for the Detroit Tigers Jewish Heritage Day. Tickets are \$21 per person; \$5 discount for Brotherhood Members and their families. Contact Julian Prince at bropez@comcast.net for more information or to purchase tickets by June 28 deadline.



CASINO NIGHT – SAVE THE DATE hosted by TBE's Sisterhood

SATURDAY, NOVEMBER 17

Las Vegas style buffet plus beer and wine. Texas Holdem tournament, poker, blackjack, craps, roulette, and money wheel. Contact Karen Lowen at 248.444.8329 for more information!



SUPPORT OUR TEMPLE AFFILIATES!

☒ Beth Elders ☒ Brotherhood ☒ Sisterhood

Did you receive an invoice for the 2018-19 annual dues for any of our TBE social auxiliary groups?

Whether you become a member, sustain your membership, or just make a donation to support their activities, all of these groups work to uplift their fellow members, the Temple congregation, and the neighboring community as a whole. Please consider pledging your support of these affiliates that do so much to enrich our lives.

JUNE

01 FRI	5:30 PM 6:00 PM 7:00 PM	Summer Kick-off BETV Lock-In Outdoor Music Shabbat Service
02 SAT	9:00 AM 10:30 AM 6:00 PM	Torah Study Shabbat Service Haydallah Service Bat Mitzvah of Ashley Singer
03 SUN	9:30 AM	Sunday Minyan
06 WED	9:30 AM 10:30 AM 6:30 PM 7:00 PM	Torah Study - Lea Beurer Hebrew - Lea Beurer Adult Hebrew Class Intro to Judaism
07 THR	10:00 AM 7:00 PM	Bites & Books Bites & Books
08 FRI	9:00 AM 10:15 AM 7:00 PM	ECC End-of-Year Celebrations! Movin On Ceremony Summer Shabbat Service
09 SAT	9:00 AM 10:30 AM 6:30 PM	Torah Study Shabbat Service Bar Mitzvah of Michael Jacoby Havdalah in Shain Park (5:30 PM Kid-ish Club Meet-up)
10 SUN	9:30 AM	Sunday Minyan
12 TUE	11:00 AM 4:30 PM 6:45 PM 7:30 PM	Great Lakes: Artistic Encounter w/lunch Executive Committee Mtg. Great Lakes: Prelude Great Lakes: Concert
13 WED	9:30 AM 10:30 AM 6:30 PM 6:45 PM 7:30 PM	Torah Study Hebrew - Lea Beurer Adult Hebrew Class Great Lakes: Prelude Great Lakes: Concert
14 THU	11:00 AM 12:00 PM 7:00 PM	Great Lakes Artistic Encounter w/lunch Beth Elders Installation Luncheon Annual Meeting (6:30 PM Wine & Cheese)
15 FRI	7:00 PM	Brotherhood Shabbat, Quinquennial Anniversaries & Graduation of Ari Chekan

16 SAT	9:00 AM 10:30 AM	Torah Study Shabbat Service
17 SUN	9:30 AM	FATHER'S DAY Sunday Minyan
18 MON	6:00 PM	Slow Roll Detroit
19 TUE	11:00 AM 6:45 PM 7:30 PM	Great Lakes Artistic Encounter w/lunch Great Lakes: Prelude Great Lakes: Concert
20 WED	4:00 PM 6:30 PM 7:00 PM	Israel @ 70 - River Days-Detroit Adult Hebrew Class Intro to Judaism
21 THU	11:00 AM 6:00 PM	Great Lakes Artistic Encounter w/lunch Bead & Feed Event
22 FRI	7:00 PM	Summer Shabbat/aufruf for Rabbi Brudney and Zach Berg
23 SAT	9:00 AM 10:30 AM	Torah Study Shabbat Service Bar Mitzvah of Jacob Tompkins
24 SUN	9:30 AM	Sunday Minyan
27 WED	6:30 PM	Adult Hebrew Class
29 FRI	7:00 PM	Summer Shabbat Service
30 SAT	9:00 AM 10:30 AM 7:00 PM	Torah Study Shabbat Service Annual Event Food Truck Festival

JULY

01 SUN	9:30 AM	Sunday Minyan
04 WED		INDEPENDENCE DAY <i>Offices Closed</i>
06 FRI	7:00 PM	Summer Shabbat Service with Sisterhood Installation
07 SAT	9:00 AM 10:30 AM	Torah Study Shabbat Service
08 SUN	9:30 AM	Sunday Minyan
09 MON	6:00 PM	Slow Roll Detroit
13 FRI	7:00 PM	Summer Shabbat Service
14 SAT	9:00 AM 10:30 AM 6:30 PM	Torah Study Shabbat Service Havdalah in Franklin Park (5:30 PM Kid-ish Club Meet-up)
15 SUN	9:30 AM	Sunday Minyan
20 FRI	7:00 PM	Green Summer Shabbat Service + Quinquennial Anniversaries
21 SAT	9:00 AM 10:30 AM	Torah Study Shabbat Service
22 SUN	9:30 AM	TISHA B'AV Sunday Minyan
27 FRI	7:00 PM	Summer Shabbat Service
28 SAT	9:00 AM 10:30 AM	Torah Study Shabbat Service
29 SUN	9:30 AM	Sunday Minyan

SOULFUL MUSIC. THOUGHTFUL PRAYER. CHALLENGING IDEAS.



SATURDAY, JUNE 2 BAT MITZVAH OF ASHLEY ROSE SINGER

Ashley Rose Singer is a 7th grader at Bloomfield Hills Middle School. She loves to dance and play tennis. She's an assistant in two weekly dance classes at Studio A and participates in their Junior Company dance team. As part of her Mitzvah project, Ashley played bingo with the older adults at the Fleischman Residence. Ashley is the daughter of Dr. Craig and Marla Singer, the sister of Noah and Ava, and the granddaughter of Shelly and Peter Cooper, and Karen and Fred Singer.



SATURDAY, JUNE 9 BAR MITZVAH OF MICHAEL MAX JACOBY

Michael is a 7th grader at Birmingham Covington School. He enjoys snowboarding, soccer, baseball and flag football, along with playing on his XBOX. He's a Boy Scout and is working towards his Eagle Scout Badge. He participates in many Mitzvah projects with his troop and is always caring for others. He's spent many hours packaging food at Gleaners Food Bank, assembling and making beds for SOS (South Oakland Shelters, an organization that sets up temporary shelter for the homeless), and many other charitable community programs. Michael is the son of Suzanne and Corey Jacoby, the brother of Emily and Katlin, and the grandson of Janelle and David, Carol and Joe Nederlander and the late Michael Jacoby.



SATURDAY, JUNE 23 BAR MITZVAH OF JACOB AARON TOMPKINS

Jacob is a 7th grader at Orchard Lake Middle School where he enjoys playing his Alto Sax in the band and is a member of the National Junior Honors Society. He's trained in Martial Arts since age 3 and currently has a second degree black belt in Tae Kwon Do. He also competes in local Rubik's cube competitions and attended a national competition. Jacob likes to spend as much time as possible at the skate park learning new tricks and improving his skills. For his Mitzvah project, Jacob raised money for prevention of teenage suicide. He sold candy and snacks at his school and reached out to family and friends to raise this money. Jacob is the son of Amanda and Seth Tompkins, brother of Joshua, grandson of Jill and Howard Gurwin and Carolyn and Stuart Tompkins.



JUNE

FRIDAY, JUNE 1

5:30 PM Summer Kick-off
7:00 PM Outdoor Music Shabbat Service
8:00 PM BETY Lock In

SATURDAY, JUNE 2

9:00 AM Torah Study
10:30 AM Shabbat Service
Torah Reader: Lucy Hoffman
6:00 PM Havdalah Service
Bat Mitzvah of Ashley Singer

FRIDAY, JUNE 8

9:00 AM ECC End of Year Celebrations
10:15 AM Movin On Ceremony
7:00 PM Summer Shabbat Service

SATURDAY, JUNE 9

9:00 AM Torah Study
10:30 AM Shabbat Service
Bar Mitzvah Michael Jacoby
6:30 PM Havdalah in Shain Park
(5:30 PM Kid-ish Club Meet-up)

FRIDAY, JUNE 15

7:00 PM Brotherhood Shabbat,
Quinquennial Anniversaries &
Graduation of Ari Chekan

SATURDAY, JUNE 16

9:00 AM Torah Study
10:30 AM Shabbat Service
Torah Reader: Ann Flood

FRIDAY, JUNE 22

7:00 PM Summer Shabbat/aufruf for
Rabbi Brudney and Zach Berg

SATURDAY, JUNE 23

9:00 AM Torah Study
10:30 AM Shabbat Service
Bar Mitzvah of
Jacob Tompkins

FRIDAY, JUNE 29

7:00 PM Summer Shabbat Service

SATURDAY, JUNE 30

9:00 AM Torah Study
10:30 AM Shabbat Service
Torah Reader: Krysten Alexander
7:00 PM Food Truck Festival –
Annual Fundraiser

JULY

FRIDAY, JULY 6

7:00 PM Summer Shabbat Service with
Sisterhood installation

SATURDAY, JULY 7

9:00 AM Torah Study
10:30 AM Shabbat Service
Torah Reader: Sue Green

FRIDAY, JULY 13

7:00 PM Summer Shabbat Service

SATURDAY, JULY 14

9:00 AM Torah Study
10:30 AM Shabbat Service
Torah Reader: Marty Shock
6:30 PM Havdalah in Franklin Park
(5:30 PM Kid-ish Club Meet-up)

FRIDAY, JULY 20

7:00 PM Green Summer Shabbat
Service + Quinquennial
Anniversaries

SATURDAY, JULY 21

9:00 AM Torah Study
10:30 AM Shabbat Service
Torah Reader: Alan Lowen

FRIDAY, JULY 27

7:00 PM Summer Shabbat Service

SATURDAY, JULY 28

9:00 AM Torah Study
10:30 AM Shabbat Service
Torah Reader: Jim Marks

CLERGY

Mark Miller, Senior Rabbi
Rachel Gottlieb Kalmowitz, Cantor
Megan Brudney, Assistant Rabbi
Daniel B. Syme, Rabbi Emeritus

STAFF

Kim Raznik, Executive Director
Deborah Morosohk, RJE, Director of Education
Claire Danaher, Chief Financial Officer
Susie Weiner, Director of Early Childhood Center
Danielle Gordon, Program Director
Lindsey Fox-Wagner, Communications Director
Rachel Rudman, Director of Member Relations
Joseph Unger, Director of Youth Engagement
Laura Williams, Curator
Alan Lowen, B'nai Mitzvah Coordinator
Jim Gabriel, Accompanist
Allan N. Friant, Sr., Building Superintendent
Joe Winter, Cemetery Superintendent
Morris Collins, Reception/Security
Thomas Jablonski, Executive Director Emeritus

EXECUTIVE COMMITTEE

Jordon Wertheimer, President
Liz Modell, Vice President/President Elect
David Foltyn, Vice President
Maxine Lievois, Vice President
Warren Rose, Vice President
Adam M. Lutz, Treasurer
Robin Fenberg, Secretary
L. Steven Weiner, Immediate Past President
E. Todd Sable, Member-at-Large
Alex Stotland, Member-at-Large

AFFILIATES

Elaine Brockman, Beth Elders
Bruce Plisner, Brotherhood
Elaine Schonberger, Sisterhood
Alecia Rice, The Kid-ish Club
Ari Richardson, Beth El Temple Youth (BETY)
Amy Byer & Emily Rosenberg, K-5 K'hilah Club



TEMPLE
BETH EL

7400 TELEGRAPH ROAD
BLOOMFIELD HILLS, MI 48301
WWW.TBEONLINE.ORG

Non-Profit
Organization
U.S. Postage
PAID
Permit No. 124
Birmingham, MI 48012

TBE'S *Shabbat in* CHARLEVOIX 2.0

Join us for a beautiful Shabbat service at the
Charlevoix Band Shell Amphitheatre.

6:15 PM NOSH & SCHMOOZE PRE-NEG BEFORE SERVICES

OPEN TO THE COMMUNITY

For more information or to RSVP, please contact Lindsey at
lfoxwagner@tbeonline.org or 248.851.1100.

**AUG
03
7:00 PM**

TBE will also offer a Shabbat service in the Maas Chapel on Friday night at 7:00 pm.