

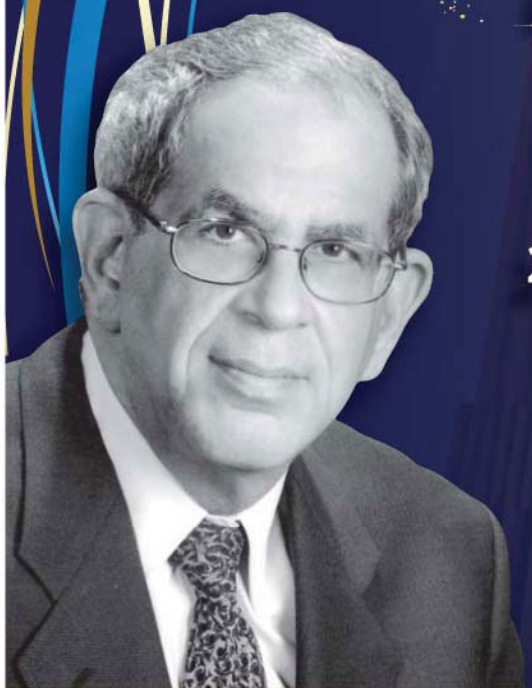
JUNE 2016  
SIVAN 5776

VOL. 29  
ISSUE 12

# the Bulletin

## *-Honoring- Rabbi Daniel B. Syme*

Please join us for an evening  
of tradition & excellence  
as we honor & celebrate  
Rabbi Syme for his  
20 years of dedicated service,  
retirement & transition  
to Rabbi Emeritus.



**FRIDAY,  
JUNE 24, 2016**

**RSVP TODAY...  
SEE PAGE 10 FOR MORE INFORMATION**







# Festival of Weeks

Shavuot is the Hebrew word for “weeks” and refers to the Jewish festival marking the giving of the Torah at Mount Sinai, which occurs seven weeks after Passover. Today, it is a celebration of Torah, education, and actively choosing to participate in Jewish life. One way Jews engage with Shavuot is by staying up at night to study and celebrate Torah. Known as Tikkun Leil Shavuot, which literally means “Rectification for Shavuot Night,” this custom allows us to re-experience standing at Mount Sinai, where the Jewish people received the Torah.

The Tikkun Leil Shavuot was developed by 16th century mystics in Tzfat, who believed that by studying on Shavuot, they were symbolically preparing Israel to enter into a sacred relationship with God.

*Join Rabbi Mark Miller, as well as Rabbi Aaron Starr and Rabbi Yoni Dahlen of Shaarey Zedek, for discussions on the topic:*

**If the Torah were given today,  
what laws would it contain?**

**Don't miss this special opportunity to engage in  
study of sacred text together this**

**SHAVUOT, SATURDAY, JUNE 11 7-10 PM**

at Congregation Shaarey Zedek  
27375 Bell Road, Southfield.

**This program is FREE and open to the community.**

For questions or to RSVP please contact  
Laura Lucassian at 248.851.1100 or llucassian@tbeonline.org.

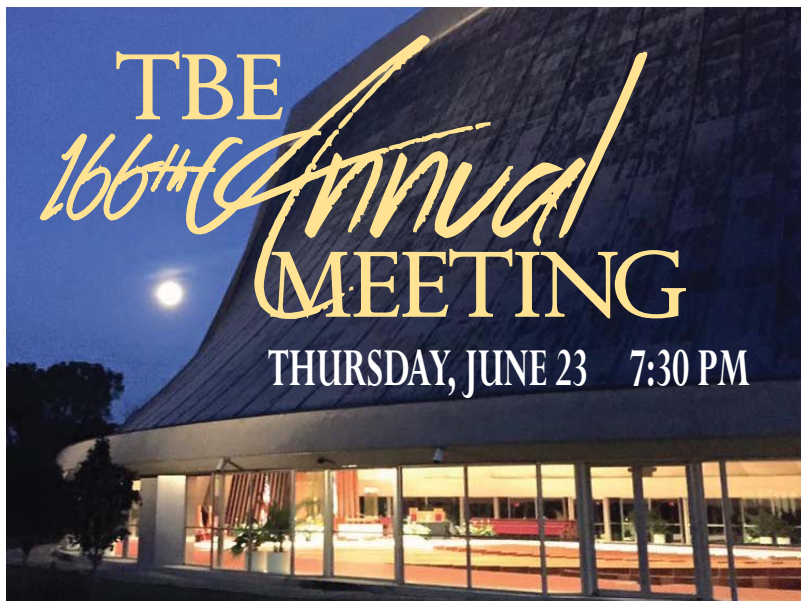
## TBE WALKS FOR ISRAEL!

*The cold weather didn't keep Temple Beth El from showing support for Israel on Sunday, May 15.*

Cantor Rachel Gottlieb Kalmowitz, blowing a shofar throughout the walk, led the bundled-up TBE walking team during the Walk for Israel. Started some eleven years ago, the Walk for Israel appeals to a broad cross-section of the Jewish community in the Detroit Metro area.

The mission of the Walk for Israel is to unite the Metro Detroit community in celebrating the establishment of the modern Jewish State of Israel and supporting her right to thrive in peace and security. Temple Beth El is proud to support Israel at the Walk for Israel and every day.





*As we conclude another successful year of programs, learning, worship, and building stronger relationships at Temple Beth El, we hope you will join us for the 166th Annual Meeting on Thursday, June 23, at 7:30 pm.*

## TEMPLE BETH EL NOMINATING COMMITTEE REPORT FOR 2016-2017

**Nominating Committee for 2016 consists of the following members:**

Dr. Raymond A. Rosenfeld, Chair

### ELECTED MEMBERS:

Steve Craig, Jeff Hollander, Cheryl Kerwin, Lenny Newman,  
Matt Rappaport, Treger Strasberg

### OFFICERS:

Jordon Wertheimer, President  
Robin Fenberg, Vice President David Foltyn, Vice President  
Maxine Lieveois, Vice President Warren Rose, Vice President  
Adam Lutz, Treasurer Liz Modell, Secretary

### BOARD OF TRUSTEES: 2016-2019 (1st 3-year term)

Kim Goodman, Steve Tarnowsky

### 2016-2019 (2nd 3-year term)

Mike Abrams, Dorothy Benyas, Lorie Kessler, Rochelle Nelson, Rick Rattner

### 2016-2017 NOMINATING COMMITTEE:

L. Steven Weiner; Chair Jim Marks, Cathy Segel, Ken Korotkin

The Nominating Committee has submitted this slate, based on the presumed approval of the Bylaws, at the 166th Annual Meeting on June 23, 2016, where the position of First Vice President is not designated and the overall size of the Board of Trustees is reduced from 24 to 21 members this year.

On behalf of the Congregation, the Nominating Committee acknowledges with great appreciation Stewart Frank who has completed his second full term as a member of the Board of Trustees, and Lisa London, who has served one full term on the Board. Both Stewart and Lisa have tremendously contributed to the governance of our congregation!

# Thank YOU!

*On behalf of a grateful Temple,  
we appreciate*

***Joan and Dr. Robert Jampel***  
*for the encouragement and  
generous donation which allowed us  
to install a much-needed handrail  
in the Helen DeRoy Sanctuary.*



*Matching the grandeur of our sacred  
space, the handrail will allow all those  
who need it to ascend the bima more  
steadily. Thank you!*





*Sacred Moments in Time...*

# A voice that Inspires, Heals, and Leads. Cantor, Rachel Gottlieb Kalmowitz!

Saturday, April 30, 2016 was a momentous night in the long history of Temple Beth El. Our own Rachel Gottlieb Kalmowitz put on a stunning display of musical talent, deep Judaic knowledge, hard work, and collaboration that will define the Cantor she has become.

Over the past four years, Rachel has been studying at our Reform seminary (Hebrew Union College – Jewish Institute of Religion) in New York and Jerusalem on her way to formal certification as a Cantor. Her concert, Sacred Moments in Time, incorporated a wide range of musicians and singers, and gave the nearly 600 Temple and community members packed into Handleman Hall an opportunity to explore the nature of holiness through music and spoken words.

Although Cantor Gottlieb Kalmowitz has served the members of TBE with dedication for the past 12 years, we hope you will find new ways to take advantage of all she has to offer our Temple. Whether at life cycle events or holidays, in worship or in a hospital room, she is truly our Cantor in every sense of the word. And for that, we wish her and our entire community Mazel Tov!







On Wednesday, May 4, 2016 Cantor Rachel Gottlieb Kalmowitz was joined at Temple Emanu-El in New York for the HUC-JIR Cantorial Certification Ceremony by L. Steven and Anne Weiner, Warren and Carol Ann Rose, Rabbi Mark and Rachel Ann Miller, and many family members (her husband, Carey, and daughter, Ilana, are pictured here).





# Highlights From TBE

## *Reflections on the 74<sup>th</sup> Annual Rabbi B. Benedict & Ada S. Glazer Institute*

### LONGEST-RUNNING INTERFAITH INSTITUTE

On Thursday, April 14, we welcomed Dr. Amy-Jill Levine to Temple Beth El for our 74th annual Rabbi B. Benedict and Ada S. Glazer Institute on Judaism. Nearly 200 people of different faith communities joined together for an evening of learning about the 1st-century, Jewish context for the New Testament.

A renowned scholar of New Testament and Jewish Studies at Vanderbilt Divinity School, as well as a self-described Yankee Jewish feminist, Levine taught that Jewish and Christian misconceptions of one another often derive from a lack of education or stereotypical reading of sacred texts.

Through an engaging lecture and casual conversation over dessert, this year's Glazer Institute continued to broaden our Temple's legacy in the longest-running interfaith institute in the U.S. and solidify our goal of building stronger and more supportive relationships in our Metro Detroit community. We hope you will look forward to a very special 75th Glazer Institute next year – watch for details in the fall.



**JUNE 14**  
**11:00 AM TEMPLE BETH EL**  
*Artistic Encounter: Escher String Quartet*

**JUNE 16**  
**11:00 AM TEMPLE BETH EL**  
*Artistic Encounter: Paul Watkins*

**JUNE 20**  
**12:00 PM TEMPLE BETH EL**  
**"Beyond the Notes:  
In conversation with Piers Hellawell"**  
*Sponsored by Sandra &  
Claude Reitelman*

Bring your lunch to this special question and answer session with Stone Composer-in-Residence Piers Hellawell. Longtime friend and collaborator Paul Watkins will guide the discussion, where Piers will share lessons from his storied career and reflect on the music of his homeland.

**THIS EVENT IS FREE AND OPEN TO  
THE PUBLIC.**

**JUNE 22**  
**7:30 PM TEMPLE BETH EL**  
*In loving memory of Joseph Silverstein by his  
friends and family*

**PRELUDE: 6:45 PM**  
Altius Quartet performs Shostakovich's String  
Quartet, No. 9 in E-flat major, Op. 117

**Vaughan Williams | Piano Quintet in C minor**  
Stephanie Gonley, violin; Scott Dickinson,  
viola; Adrian Brendel, cello; Kevin Brown,  
double bass; Ian Brown, piano

**Hellawell | Weaver of Grass**  
Stephanie Gonley, violin; Scott Dickinson,  
viola; Adrian Brendel, cello; Kevin Brown,  
double bass; Ian Brown, piano

**Schubert | Piano Quintet in A major,  
D. 667, "Trout"**  
Philip Setzer, violin; Scott Dickinson, viola;  
Paul Watkins, cello; Kevin Brown, double bass;  
Alessio Bax, piano

**JUNE 23RD**  
**11:00 AM TEMPLE BETH EL**  
*Artistic Encounter: Adrian Brendel &  
Michael Gurevich*

*Please join us for a special post-concert reception to honor longtime Festival friend and supporter Joseph Silverstein.*

Tickets: \$35 Regular | \$10 (under 25) All tickets are \$5 more at the door.  
For tickets call: 248.559.2097 or online at <http://greatlakeschambermusic.org/>

## OVER 2,600 PEOPLE FILLED THE DeROY SANCTUARY TO HEAR FORMER FIRST LADY ELEANOR ROOSEVELT

by Jan Durecki, Archivist



The Rabbi Leo M. Franklin Archives has recently received a donation of newspaper clippings and ephemera from Carol Kozlow. The clippings are from the 1940s and detail Rabbi B. Benedict Glazer's selection as Rabbi Franklin's successor. A 1947 Detroit Free Press article covered the visit of former First Lady Eleanor Roosevelt to Temple Beth El. More than 2,600 persons filled the sanctuary to hear Mrs. Roosevelt's appeal for the financial aid for the millions of

Europeans who were left homeless in the post war years. She spoke at the invitation of the Jewish Welfare Fund which was also campaigning nationally for \$170,000 to aid displaced Jews. I was surprised to learn that Mrs. Roosevelt had relatives who lived in Metro Detroit – a niece in Birmingham and a sister-in-law who resided in Birmingham. Among the ephemera (things that are meant to be used for a short time) was an invitation to her “pulpit address” and two circa 1944 tickets for Holy Day Services.

*Three Days After...*

## A LETTER FOR HOME



Fred Freeman (1923-1945)

Fred Freeman has given the Jewish War Veterans of Michigan Archives a letter written by his uncle and namesake who was killed during WWII. Sergeant Fred Freeman (1923-1945) was attached to the 768 Bomber Squadron, 462 Bomber Group. The entire crew was lost when their aircraft crashed and burned on a training mission at West Field on Tinian Island in the Marianas Islands. After hostilities ceased, Fred was re-interred at the National Memorial Cemetery of the Pacific.

Fred's letter home to his siblings, dated July 15, 1945, is particularly poignant. In it he wrote of the hope that future generations would “never have to see any of this stuff” with the faith that “man [would] have the wisdom to avert this ... damn thing.” He protected his parents (Alex and Esther) by not letting them know the dangers he was facing. Instead, he wrote them that he was “laying around and taking life easy.” He didn't complain about the escalating number of missions he was flying knowing that each one brought him closer to returning home. Unfortunately, Fred was killed on July 18 – three days after he penned the letter which was delivered after the family had been notified of his death.

I am so pleased that Fred's namesake contacted the Jewish War Veterans of Michigan's Archives. He had attempted to donate the letter to other organizations, but was rebuffed. When he contacted me, I told him that we would be overjoyed to accept the artifact. It is now part of the Veterans' Files in the JWVM Archive.

### Archives' Jewish History Detectives Lecture

## BEFORE DETROIT WAS HOCKEYTOWN!



**In 1926, two JEWISH DETROITERS  
made a power play move to bring  
PROFESSIONAL HOCKEY  
to the MOTOR CITY.**

Sponsored by:  
**Dr. Robert and Joan M. Jampel.**  
Co-sponsor: Jewish Historical Society  
of Michigan.

DETAILS TO FOLLOW.



# The People of the Book



## TBE wishes Eileen Polk Mazel Tov on her retirement after 14 years as Temple Librarian!

Dear Friends,

Fourteen years ago I became the librarian at the Prentis Memorial Library of Temple Beth El after interviewing with Patti Phillips and Evelyn Prince. I was excited about the position because it gave me the opportunity to do something librarians are seldom asked to do anymore; take an old, analog library that had been in existence since 1878 and bring it into the 21st century. It took a lot of work, almost 5 years' worth, and a lot of people helped, but for many years now the Prentis Memorial Library of Temple Beth El has been a warm, welcoming and active space the congregation can be proud of.

Over the years the Library has hosted authors, sponsored events, created a popular book club, held regular story hours for the ECC and Religious School, as well as Bedtime Story Hours, besides maintaining and enlarging the collection of books, DVDs and CDs that enrich the Jewish lives of our congregants. We operate an up-to-date cloud-based catalog that is easily accessible on-line from anywhere in the world, there is access to multiple on-line Jewish resources and the Library is itself the Jewish resource for the Baldwin Public Library of Birmingham.

Now, as I get ready to retire at the end of June, I look back on all that has been accomplished in the last 14 years and feel a sense of pride and a great sense of gratitude to all who have helped this Library grow and change. I want to thank the entire Library Committee, especially Eleanor Blum, Denny Brown, Beverly Canvasser z"l, Julian Prince, Carole Schock, and Jessie and Shelly Stern who have been on this journey since the beginning. I have been privileged to work with this incredibly loyal and dedicated group. A special thanks also goes to the Library volunteers. There have been many over the years, but I especially appreciate the dedication of Audrey Zupmore and Irv Baron. I have been proud to be part of the staff of Temple Beth El. This is a committed group of people who are always ready to help each other out and it has been a real pleasure to work with and know them and to assist them when they have come to the Library for help.

The Prentis Memorial Library would not be what it is today without you, the members of TBE. I have enjoyed getting to know you and your children as you come in to check out the latest books, enjoy the programs, use the wi-fi, ask a reference question, or just poke your head in to say "Hello". Your continued support through the Friends of the Library and through your attendance at Library events and programs has demonstrated the importance of having an active Temple Library in your lives.

Lastly, I want to express my heartfelt thanks to three special people - Patti Phillips, Evelyn Prince and Rae Monchnik. At the start of my time here, Patti and Evelyn were my guides and mentors and they have continued to be my trusted counselors. Patti's interest in the Prentis Memorial Library is personal; Anna S. and Meyer L. Prentis were her grandparents. Evelyn served as the chair of the Library Committee for ten years. Rae is the current chair of the committee who became involved when her children were in the Religious School. I cannot say enough about the devotion of these three women, who I consider my friends. I promise I will not be a stranger. I look forward to seeing the Prentis Memorial Library continue to grow from strength to strength as it proudly supports "the People of the Book"!

Sincerely,  
Eileen Polk, M.L.I.S.

**Prentis**  
MEMORIAL LIBRARY  
*of Temple Beth El*



PLEASE WATCH FOR UPCOMING INFORMATION ABOUT A SPECIAL RETIREMENT CELEBRATION HONORING EILEEN POLK!





At our annual Kidz Bop ECC PTO Fundraiser, Charlie Feldman won a special auction prize, and became ECC Director for a day. He had upper-level meetings with many staff members, including Rabbi Miller, Debbie Morosohk, and Marie Curtis.

He was particularly directorial in his meeting with Executive Director Kim Raznik, when he had to turn down her request for a vacation. He also decreed that we must always have tons of fun in the ECC!

### Beth Elders Installation Luncheon & Cuban Jazz Concert



**TUESDAY, JUNE 21 12-2:30 PM**

Join the Beth Elders for an installation luncheon and concert featuring Paul VornHagen & Trio Tumbao. Enjoy the Rhythms of Cuba over good food & great company.

An RSVP is requested. \$10 per person in advance, \$12 at the door, includes lunch and concert.  
For more information and to make reservations, call Betty Applebaum at 248.476.1775.

## TBE music shabbat a Mazel Tov Moment!



Our Music Shabbat in May was extra special, as the congregation took an opportunity to wish Rachel Rudman well as she and her fiancé, Justin Wedes, leave for New York. Prior to starting rabbinical school in the fall, Rachel received a special blessing by our Temple clergy, and shared some words about the time she spent here at TBE. There were a few tears, a few laughs, and much dancing and celebration at the special Oneg Shabbat after services. We look forward to sharing updates about her journey over the next four years!



Please let Temple know when you or a loved one is in need of care by contacting the Rabbi's study at 248.865.0602, [llucassian@tbeonline.org](mailto:llucassian@tbeonline.org) or by writing to [Caring@tbeonline.org](mailto:Caring@tbeonline.org).

*We will respond with compassion and confidentiality.*

A proud rabbinate... from generation to generation... touching peoples' lives...

*Please join your Temple family,  
community leaders and guests for...*

An evening of tradition and excellence as we honor & celebrate Rabbi Daniel B. Syme for his 20 years of dedicated service and spiritual guidance, retirement, and transition to Rabbi Emeritus.

# Rabbi Daniel B. Syme

## A LIFE OF COMMITMENT AND SERVICE

Rabbi Daniel B. Syme's career began many years ago when he edited his own newspaper at the age of 8. He went on to bigger things, such as serving as a Good Humor ice cream man before attending the University of Michigan. After graduating in 1967, with Phi Beta Kappa honors, Syme faced a near-fatal bout of cancer that forever changed his life. Prior to surgery, he asked his father, Rabbi M. Robert Syme, to get him an application to the Hebrew Union College (HUC). He told his Dad that if he recovered, he would devote his life to God.

Rabbi Syme survived and as promised, was ordained by HUC in 1972. While there, Rabbi Syme won the Farband Hebrew Prize, the Sulzberger Award in Homiletics and the Lazarus Prize for Academic Excellence. He also earned a Master's and Doctorate Degrees in Education from Columbia University Teachers College, and taught at the New York campus of the Hebrew Union College – Jewish Institute of Religion.

After his ordination, he spent 24 years at the UAHC (Union of American Hebrew Congregations, now Union for Reform Judaism). His professional roles included Director of NFTY, Director of Education, and ultimately, Senior Vice-President of the Union. During his tenure, Rabbi Syme created groundbreaking programming in outreach, television and film production, and youth suicide prevention. Youth suicide awareness has been an important focus of Rabbi Syme's career. After his younger brother Michael took his own life at the age of 20, Rabbi Syme vowed to help spare other families from the paralyzing

trauma of suicide. Rabbi Syme created Hand of Hope, an educational resource center, teaching parents and teens about the warning signals of a potential suicide and giving them permission to break the silence. Partnering with national sports teams, celebrities, and athletes, Rabbi Syme worked to spread awareness and raise money to curb the epidemic of youth suicide.

Throughout his career, Rabbi Syme wrote or co-wrote more than 20 books, produced eight cable television shows, launched a national suicide prevention program, and lectured extensively throughout the US and abroad. His writings include *Finding God*; *The Jewish Home – A Guide to Jewish Living*; *Why I Am A Reform Jew*; *What Happens After I Die*; *Drugs, Sex and Integrity*; *The Jewish Wedding Book*; *The Book of the Jewish Life*; and *100 Essential Books for Jewish Readers*. His UAHC television programs include: *A Conversation with Menachem Begin*, *To See the World through Jewish Eyes*, *A Conversation with George Burns*, and *Choosing Judaism*.

In 1996, Rabbi Syme left the Union and returned to his hometown of Detroit to serve as a congregational Rabbi at Temple Beth El. He brought inspiring speakers and musicians to TBE and to the community at large. Some memorable guests included activist Coretta Scott King, folk musicians Peter, Paul and Mary, journalist and author Cokie Roberts, civil rights attorney Morris Dees, and social activist Julian Bond.

Under Rabbi Syme's guidance, Temple Beth El deepened its commitment to

building interfaith relationships. Through a close friendship with Pastor Kenneth Flowers, Temple Beth El and Greater New Mt. Moriah Missionary Baptist Church collaborated on joint programming and worship opportunities. Congregants loved the annual interfaith Gospel Seder, where over 300 participants from Temple Beth El and Greater New Mt. Moriah came together for discussion of Black and Jewish history and soulful renditions of classic Passover songs. Elaine Schonberger, whose parents Izzy and Fran Malin introduced Rabbi Syme and Pastor Flowers, remembers thunderous voices singing *Let My People Go*.

Committed to making a difference in people's lives, Rabbi Syme started the Morning Minyan, a havurah-style group that meets each Sunday, with the intention of providing an intimate and supportive prayer space for congregants. Frayda Riger first attended Minyan when she lost her beloved mother and was struck with grief. The group comforted her, and today, 11 years later, she pays it forward by continuing to participate in Minyan and comforting others during difficult times.

Partnering with Jim Hiller of Hiller's Grocery, Rabbi Syme also established Mitzvah Meals to provide food for families in need. Mitzvah Meals had a huge impact on volunteers and recipients alike, and engaged





in meaningful ways... one person at a time.



**FRIDAY, JUNE 24, 2016**

This special evening will feature a  
**6:00 PM SHABBAT DINNER**

followed by  
**SHABBAT SERVICES**  
**AT 7:30 PM**

in the DeRoy Sanctuary

**REGISTER ONLINE AT**  
**TBEONLINE.ORG/EVENT-REGISTRATION**  
For more information or to register by  
phone, contact Laura Lucassian at  
**248.851.1100** or  
**llucassian@tbeonline.org.**

NUMBER OF ADULTS \_\_\_\_\_

@ \$36 per person = \$ \_\_\_\_\_

NUMBER OF CHILDREN 12 YEARS & UNDER \_\_\_\_\_

@ \$15 per child = \$ \_\_\_\_\_

NUMBER OF CHILDREN 3 YEARS & UNDER  
(NO CHARGE) \_\_\_\_\_

I REGRET I CANNOT ATTEND. ENCLOSED IS MY  
CONTRIBUTION OF \$ \_\_\_\_\_

**TOTAL ATTENDING** \_\_\_\_\_ **TOTAL \$** \_\_\_\_\_

NAME (S) \_\_\_\_\_

I would like to be seated with (if possible) \_\_\_\_\_

ADDRESS \_\_\_\_\_

CITY \_\_\_\_\_ ZIP \_\_\_\_\_

PHONE \_\_\_\_\_

EMAIL \_\_\_\_\_

MY CHECK IS ENCLOSED IN THE AMOUNT OF

\$ \_\_\_\_\_ OR CHARGE TO MY (CIRCLE ONE)

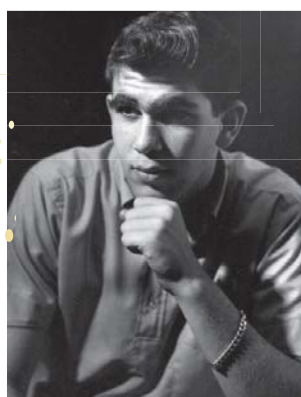
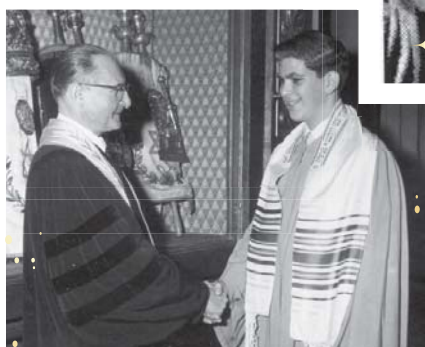
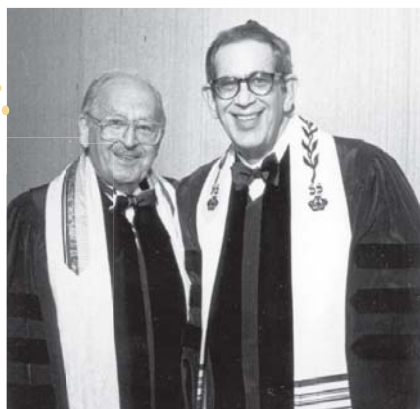


NUMBER \_\_\_\_\_

EXP. DATE \_\_\_\_\_ SEC. CODE \_\_\_\_\_

NAME AS IT APPEARS ON THE CARD \_\_\_\_\_

**MAKE CHECKS PAYABLE & MAIL TO**  
**TEMPLE BETH EL, 7400 TELEGRAPH ROAD**  
**BLOOMFIELD HILLS, MI 48301**  
**ATTN: RABBI SYME DINNER**



the TBE community in the practice of gemilut hasidim, acts of loving-kindness.

Some of Rabbi Syme's most memorable TBE moments involve children. When Jennifer and Camilo Ostheimer joined temple in 2013, their then 8 year old son Noah wanted to start a charity that would help kids make a difference in the lives of others. Thanks to Rabbi Syme, Noah's Angels and Dreamers project became a reality, and has since brightened many lives. Teaching Confirmation classes, handing out candy on the bima, and enjoying individual interactions with kids, Rabbi Syme has made children a priority during his time at TBE.

Rabbi Syme's passion for helping others extends beyond the Beth El community. He has participated in national and international organizations, serving as vice president of the American Zionist Youth Movement, director at large of the Board of the Jewish National Fund of America, a board member of the United Israel Appeal, and as vice president of the American Zionist Movement. He was one of the first chairmen of the Coalition for the Advancement of Jewish Education, a board member of the Memorial Foundation for Jewish Culture, the Executive Boards of

the National Council for Jewish Education and the Ecumenical Institute, and was Co-Chairman of the Coalition for Jewish Unity. He was honored as a Knight of Charity by the Pontifical Institute for Foreign Missions (P.I.M.E. Missionaries) in 1997, elected to the board of the Detroit Economic Club in 1998, and received the Justice Louis D. Brandeis award from the Zionist Organization of America in 1999. In 2010 he was inducted into the prestigious Rev. Martin Luther King, Jr. Board of Preachers of Morehouse College in Atlanta and in 2012 was presented with the Community Leadership Award by the American Jewish Committee. Rabbi Syme's accomplishments are impressive and well-deserved. But more importantly, all who know Rabbi Syme are drawn to that which accomplishments alone cannot convey: his warmth, compassion, and generosity.

On June 24, we will honor Rabbi Daniel B. Syme for his 20 years of service at Temple Beth El, as he retires and transitions to Rabbi Emeritus. We are grateful for the past 20 years, and wish him well in wherever life takes him and his wife, Dr. Jill Syme.

## Fun & Learning

This summer –  
more than just our spirit  
will be growing at TBE!!

The garden beds are built, the seedlings are planted, and we're very excited to watch our new vegetable garden grow this summer in the TBE playground! We are hopeful that it will yield lots of wonderful fresh vegetables that we can donate to feed those in need.

Monte Schloss, our 6<sup>th</sup> grade Religious School teacher, launched the idea, and we've been partnering with Hazon, a Jewish non-profit dedicated to healthy living and sustainability, to make our garden a reality. Religious School 6<sup>th</sup> graders seeded vegetables in

March and built the garden beds in April. 4<sup>th</sup> Grade families started planting in the garden at their family program in May.

Hazon staff will work with our campers this summer to maintain the gardens and TBE members are welcome to join in on the effort!





# CAMP

# BETH EL



**Temple Beth El  
Early Childhood Center**  
Where Our Spirit Is Growing

**June 20 –  
August 12**

**For children ages  
18 months – 5 years**

**Certified Teachers**

**Flexible  
Schedules  
2, 3, 4 or 5 half  
or full days**

**Treehouse, Sand  
and Water Wall!**

**ALL NEW NATURAL  
PLAYGROUND!**

**Before & After Care  
8:30 am - 6:00 pm**

**SAVE THE DATE FOR  
Safety Town - Aug. 15-19**  
For Kindergarten Bound Kids  
Contact: **Susie Weiner,**  
ECC Director at 248.865.0611  
or [sweiner@tbeonline.org](mailto:sweiner@tbeonline.org)

Temple Beth El 7400 Telegraph Rd. Bloomfield Hills, MI 48301 [www.tbeonline.org/learning/ecc](http://www.tbeonline.org/learning/ecc)



### Religious School Registration Will Soon Be Open for 2016-2017

TBE members will be able to register on the website at [www.tbeonline.org](http://www.tbeonline.org) with their username & password.

*We are busy planning fabulous Jewish educational experiences for our students and families in the coming year and invite you to register and be a part of it all!*

Grades K and 1	9:30 AM – 12:00 PM	Sunday Morning Religious School <b>OR</b>
	1:00 PM – 3:00 PM	Monthly Mishpacha ( <i>once a month Sunday afternoon experience for students with their family</i> )
Grades 2-4	9:30 AM – 12:00 PM	Sunday Morning Religious School
Grades 5-6	9:30 AM – 12:00 PM	Sunday Morning Religious School <b>AND</b> on either (Sunday or Wednesday)
	8:30 AM – 9:30 AM	Sunday B'nai Mitzvah Club <b>OR</b>
	4:30 PM – 5:30 PM	Wednesday B'nai Mitzvah Club
Grade 7	10:30 AM – 12:00 PM	Two Sundays per month
Grades 8-10	6:00 PM – 7:30 PM	Monday Night School
Grades 11-12	6:00 PM – 8:00 PM	One Monday night per month

**TBE STAR WARS NIGHT!**



**STAR WARS**  
THE FORCE AWAKENS

**SUNDAY, JUNE 5**  
**4:30 - 7:30 PM**

**Join us in Handleman Hall, and watch the latest Star Wars release, Episode 7: The Force Awakens.**

*Come dressed as your favorite Star Wars Character or just in your PJ's!*

**Enjoy Star Wars themed snacks, games, dinner, trivia, contests and more!**

**\$5 PER PERSON**

Bring any new or gently used toys to donate to the HUMBLY DESIGN TOY DRIVE to benefit needy children in Detroit!

**For more information on these programs or to RSVP, contact Joey Unger at [Junger@tbeonline.org](mailto:Junger@tbeonline.org) or 248-851-1100.**

**TBE TOT SHABBAT**



**Join Us**  
**Saturday, June 4**  
**9:30 am Service in the Chapel**  
**Oneg & activity following!**

A fun, musical morning experience for families with children, ages 0-6+.

**READERS CLUB**



Readers Club in the Prentis Memorial Library, sponsored by MernaLyn and son, Billy Wiseman.  
THANK YOU!

## RAYMOND & SHIRLEY ABRAMS YOUTH GROUP RECREATION FUND

### IN MEMORY OF

GERALD MANKO  
ROBERT LONGWELL REYFF, JR.  
SUZANNE MENDELSON  
THEODORE "TED" LOUIS SOLLINS  
Wendy & Henry Abrams & Family

## ROBERT & BEVERLY CANVASSER JEWISH ADVENTURERS FUND OF TEMPLE BETH EL

### IN MEMORY OF

KEN STEIN  
Cheryl & Ronald Kerwin

### IN HONOR OF

EVERLY MARILYN WERTHEIMER  
Cheryl & Ronald Kerwin

### A CONTRIBUTION

Cheryl & Ronald Kerwin

## DEUTCHMAN FAMILY FUND

### IN MEMORY OF

GERALD MANKO  
Cathy & Jim Deutchman

### IN HONOR OF

RACHEL RUDMAN ON HER ENGAGEMENT & ACCEPTANCE TO RABBINICAL SCHOOL  
Marie & Jerry Curtis

## HERMAN & BEA DICKSTEIN MEMORIAL YOUTH FUND

### IN MEMORY OF

BARBARA SCHREIER  
BEA DICKSTEIN  
Kim & Kenneth Dickstein

## RUTH FRANKLIN EINSTEIN EDUCATION ASSISTANCE FUND

### IN HONOR OF

80TH BIRTHDAY OF MYRON LABAN  
Elaine & Bob Tell

## RABBI LEO M. FRANKLIN ARCHIVES FUND

### IN MEMORY OF

HAROLD PLOTNIK  
Phyllis Kaplan  
JACK S. MACWILLIAMS  
JoAnn MacWilliams-Wolf

### IN HONOR OF

JAN DURECKI ON RECEIVING THE LEONARD N. SIMONS HISTORY AWARD  
Wendy, Meryl & Kay Hauser, Phyllis Kaplan, Ellin Lawson, Elaine & Mark Schonberger & Family, Marianne Myers, Eileen & Richard Polk, Barbara Grant, Sandy & Lee Marks, Marie & Jerry Curtis, Lois R. Weintraub

### A CONTRIBUTION

Cynthia Brody, Barbara Grant, Suzanne MacWilliams, Ellin, John & William Lawson

## FRIENDS OF THE PRENTIS LIBRARY FUND

### IN HONOR OF

EILEEN POLK ON HER RETIREMENT  
Marie & Jerry Curtis

### A CONTRIBUTION

Cindy Bolokofsky, Patrice & Eric Phillips

## GENERAL OPERATING FUND

### IN MEMORY OF

ARNOLD BERG  
Ron & Wendy Gruskin  
DR. HAROLD PLOTNIK  
Judy Miller  
MICHAEL BLOOM  
Brenda & Sandy Passer  
RICHARD TISCHLER  
Ann Smitt, Douglas & Lynda Thal, Bob Morris & JoAnn Ross  
CHARLES FENBERG  
LILLIAN FENBERG  
Robin & Michael Fenberg

### IN HONOR OF

FLORA WINTON  
Connie & Mickey Ross  
44TH ANNIVERSARY OF CATHY & JIM DEUTCHMAN  
Margi & Don Epstein

## GLAZER ELEMENTARY SCHOOL ADA S. & RABBI B. BENEDICT GLAZER MEMORIAL FUND

### IN MEMORY OF

RABBI B. BENEDICT GLAZER  
Mania & Mark Glazer

### IN HONOR OF

RACHEL RUDMAN, THANK YOU FOR ALL YOUR HELP & SUPPORT WITH THE INSTITUTE  
Mania & Mark Glazer

## FRED & ELAYNE GREENSPAN FUND FOR ADVANCING JEWISH EDUCATION

### IN HONOR OF

CONGRATULATIONS TO JOHANNA & ALEX, CHILDREN OF JAN AND MARC DUNN  
Karen & Bob Weisberg

## THE JILL GURWIN MEMORIAL FUND

### IN MEMORY OF

JILL GURWIN  
Barbara Cohen

## THE MICHELSON-HABER MEMORIAL FUND

### IN MEMORY OF

DR. MICHAEL BLOOM  
Barbara & Jonathan Haber

### IN HONOR OF

JAN DURECKI RECIPIENT OF THE LEONARD N. SIMONS HISTORY AWARD  
Barbara & Jonathan Haber

## PAUL & SONIA HANDLEMAN MEMORIAL FUND

### IN HONOR OF

CANTOR RACHEL GOTTLIEB KALMOWITZ, MAZEL TOV ON ATTAINING YOUR GOAL  
JAN DURECKI, CONGRATULATIONS ON YOUR WELL DESERVED HONOR  
Rose & David Handleman

## SHIRLEY & MAURICE J HAUSER MEMORIAL FUND

### IN MEMORY OF

DR. MICHAEL BLOOM  
Wendy, Meryl & Kay Hauser

## RABBI RICHARD C. & RENDA HERTZ GIFT OF LIFE FUND

### IN MEMORY OF

JACK GUZ  
MICHAEL BLOOM  
Shelly & Peter Cooper  
HELEN ALLEN  
JAY ALLEN  
Lisa Allen  
BELOVED MOTHER RAE V. RUBIN  
Lois R. Weintraub  
SUZANNE KATZ  
Eleanor Blum

### IN HONOR OF

JAN DURECKI ON RECEIVING THE LEONARD N. SIMONS HISTORY AWARD  
RABBI SYME'S 20 YEARS OF DEDICATED SERVICE TO TEMPLE BETH EL AND BECOMING RABBI EMERITUS  
RACHEL GOTTLIEB KALMOWITZ ON COMPLETING HER CANTORIAL CERTIFICATION PROGRAM  
ENGAGEMENT OF ELAYNE GREENSPAN'S GRANDDAUGHTER  
Shelly & Peter Cooper  
BIRTH OF ALEX & JORDON WERTHEIMER'S BABY GIRL  
Cathy & Mark Segel

## HOWARD & CELIA JACOBSON MEMORIAL FUND FOR THE BETH ELDERS OF TEMPLE BETH EL

### IN MEMORY OF

BARBARA SCHWREIER  
Renee & Tom Jablonski  
BRIAN APPLEBAUM  
FLORENCE SCHUMAN  
Betty Applebaum  
HAROLD PLOTNIK  
PAULINE KARBAL  
Phyllis Kaplan

### IN HONOR OF

RACHEL KALMOWITZ'S GRADUATION FROM HEBREW UNION COLLEGE AS CANTOR  
Phyllis Kaplan  
JOANNA FRIANT  
Betty Applebaum

## JEWISH WAR VETERANS IN SUPPORT OF LIBRARY

### A CONTRIBUTION

Jewish War Veterans

## CANTOR RACHEL KALMOWITZ DISCRETIONARY FUND

### IN MEMORY OF

GERALD MANKO  
MARILYN BARNETT  
Ken Korotkin

### IN HONOR OF

RACHEL KALMOWITZ FOR HER STUNNING PROGRAM ON APRIL 30  
Merrilee & Andy Broder and Family  
RACHEL GOTTLIEB KALMOWITZ 'S GRADUATION & CERTIFICATION AS CANTOR  
Barbara Cohen, Laurie and Michael Nedelman, Judith Schwartz, Merrilee & Andy Broder and Family  
CANTOR RACHEL KALMOWITZ  
Lisa & Steve Rotter



## CANTOR RACHEL KALMOWITZ MUSIC FUND

### IN MEMORY OF

EDITH GOTTLIEB

*Beth Elders of Temple Beth El, Ruth & Gil Plotnik,  
Melissa Schiller, Elaine & Mark Schonberger &  
Family, Evelyn and Julian Prince*

### IN HONOR OF

RACHEL GOTTLIEB KALMOWITZ 'S GRADUATION &  
CERTIFICATION AS CANTOR

*Elaine & Mark Schonberger & Family, Beth Elders  
of Temple Beth El, Ruth & Gil Plotnik, Diane Farber,  
Sandy & Lee Marks, Carol & Steve Tarnowsky,  
Jackie & Earl Remer, Marie & Jerry Curtis, JoAnn  
MacWilliams-Wolf, Eileen & Richard Polk, Peggy  
Meyer, Phyllis Loewenstein & Sheldon Plotnik, Carole  
and Martin Schock, Deborah Morosohk, Sam, Ryan,  
Kimberly & Gary Goodman*

RACHEL GOTTLIEB KALMOWITZ FOR HER  
WONDERFUL CONCERT

*Peggy Meyer*

BAT MITZVAH OF MARLEY WOLF

*Brooke & Paul Wolf*

WEDDING OF THE GRANDDAUGHTER OF RAE NACHBAR  
GRADUATIONS OF GRANDCHILDREN OF RAE NACHBAR  
*Carole & Martin Schock*

## THE BABS & HERB KAUFMAN LISTEN IN FUND

### IN HONOR OF

ANNIVERSARY OF CAREY & RACHEL KALMOWITZ

ANNIVERSARY OF DONALD & MARJORY EPSTEIN

ANNIVERSARY OF EDWARD & LINDA LEVY

ANNIVERSARY OF HARVEY & LOIS FREEMAN

ANNIVERSARY OF JAMES & NANCY GROSFELD

ANNIVERSARY OF JOHN & JUDITH KAMINS

ANNIVERSARY OF L. STEVEN & ANNE WEINER

ANNIVERSARY OF S. EVAN & GWEN WEINER

BIRTHDAY OF BYRON CANVASSER

BIRTHDAY OF DENNIS GERSHENSON

BIRTHDAY OF DR. STEPHEN STURMAN

BIRTHDAY OF FLORA WINTON

BIRTHDAY OF IRVING STEINBERG

BIRTHDAY OF KENNETH KOROTKIN

BIRTHDAY OF KIMBERLY RAZNIK

BIRTHDAY OF MARGARET STARK

BIRTHDAY OF MARVIN FRENKEL

BIRTHDAY OF MERLE HARRIS

BIRTHDAY OF MICHAEL HERMANOFF

BIRTHDAY OF SANFORD PASSER

BIRTHDAY OF WARREN COVILLE

*Babs & Herb Kaufman*

## ELLIN & HAROLD LAWSON YOUTH INSTITUTE FUND

### IN HONOR OF

ELLIN LAWSON, HAPPY MOTHER'S DAY 2016

89TH BIRTHDAY OF ELLIN LAWSON, AND MANY  
MORE IN PEACE AND GOOD HEALTH

*John Lawson*

IN HONOR OF RACHEL RUDMAN FOR HER TIME AT  
TBE, ENGAGEMENT & ACCEPTANCE TO  
RABBINICAL SCHOOL

*Sam, Ryan, Kimberly & Gary Goodman*

## MARSHALL & PHYLLIS LOEWENSTEIN FAMILY CAMPSHIP FUND

### IN MEMORY OF

SUZANNE MENDELSON

*Phyllis Loewenstein & Sheldon Plotnik*

## ISADORE & FRANCES MALIN INTERFAITH ACTIVITIES FUND

### IN MEMORY OF

ISADORE IZZY MALIN

SYLVIA SCHONBERGER

*Elaine & Mark Schonberger & Family*

## FREDERICK H. MARX MEMORIAL FUND

### IN MEMORY OF

MARILYN BARNETT

RICHARD TISCHLER

STANLEY GORDON

*Sally Marx and Julie Marx*

## RABBI MILLER DISCRETIONARY FUND

### IN MEMORY OF

ALICE FLASCHNER

JOSEPH FLASCHNER

LARRY LEVINE

*Debbe & Leon Saperstein*

ANNE M. GOLDSTEIN

*Carole & Stephen Goldstein*

BETTY CHAPRACK

*Dr. Carol Schwartz*

DR. HAROLD PLOTNIK

*Barbara Kahn*

LEAH TABASHNIK

Nedra Kapetansky

RHODA LAMPERT

*Harriet & Richard Shapack*

### IN HONOR OF

BABY NAMING OF BROOKLYN BENKOFF

*Sharon & Dennis Green*

BAT MITZVAH OF MARLEY WOLF

*Brooke & Paul Wolf*

## HARRY & SALLY NOSANCHUK CARING COMMUNITY FUND

### IN MEMORY OF

CLIFFORD MARTIN ROGERS

MARTIN HELLER

*Harry Nosanchuk, Linda, Scott, Eric & Hilary Sircus*

EVELYN HOFFMAN KASLE

SARAH KOENIGSBERG

*Linda, Scott, Eric & Hilary Sircus*

### IN HONOR OF

ANNIVERSARY OF DRS. LINDA & SCOTT SIRCUS

BIRTHDAY OF CHARLOTTTE SALZMAN

BIRTHDAY OF DR. CHARLES BLOTNER

RABBI DANIEL SYME FOR HIS MANY YEARS  
OF FRIENDSHIP

*Harry Nosanchuk*

## ONEG/ KIDDUSH FUND

### IN MEMORY OF

BENITA BORNSTEIN

*Eileen Millstone*

ELSA KOPPLE BERGER

EUGENE H. KOPPLE

MELVIN D. KOPPLE

BABETTE WILDER

BERNARD WILDER

Wendy Wilder-Werner

## ROSNER CULTURAL ENRICHMENT FUND FOR CHILDREN AT RISK

### IN MEMORY OF

HAROLD PLOTNIK

*Temple Beth El Study Group*

## LOIS & MARK SHAEVSKY FOOD ALLERGY AWARENESS FUND

### IN MEMORY OF

EDITH GOTTLIEB

*Marlo & Tom Shaevsky*

LAWRENCE I. LEVI

*The Shaevsky Family, Missy, Larry, Mallory &  
Mason Shaevsky*

## SISTERHOOD BRAILLE FUND

### IN MEMORY OF

DAVID ROSENTHAL

GERALD H. MANKO

*Betty & Irving Baron*

HAROLD PLOTNIK

*Jackie & Earl Remer*

## RABBI DANIEL SYME DISCRETIONARY FUND

### IN MEMORY OF

ARTHUR HOWARD

*Raquel Howard*

DR. HAROLD PLOTNIK

*Myrna Kolin*

RICHARD TISCHLER

*Raquel Howard*

### IN HONOR OF

EILEEN POLK ON HER RETIREMENT

*The Sunday Minyan*

### IN HONOR OF

*Brooke & Paul Wolf*

BAT MITZVAH OF MARLEY WOLF

*Brooke & Paul Wolf*

RABBI DANIEL B. SYME FOR YOUR YEARS AT TBE

*Sam, Ryan, Kimberly & Gary Goodman*

RABBI DANIEL SYME, THANK YOU FOR YOUR

RESPECT AND FRIENDSHIP

*Marie, Jerry and Justin Curtis*

### A CONTRIBUTION

*George Chaney, Jana Rose Von Gott*

## TEMPLE BETH EL MITZVAH MEAL FUND

### IN MEMORY OF

GINDA RATNER

ANNA GOLUBOVSKY

*Bella & Lev Shleypak*

## MAMIE & JASON TICKTON MUSIC FUND

### IN MEMORY OF

MARTIN SHARP

SHARON SHAPI CHABEN

*Frayda Riger*

### IN HONOR OF

RACHEL KALMOWITZ'S CANTORIAL CERTIFICATION

AS CANTOR OF TEMPLE BETH EL

*Carol & Stan Tickton*

BAT MITZVAH OF MARLEY WOLF

*Kathy Storchon*



## WE NOTE WITH SORROW THE PASSING OF...

### DR. MICHAEL BLOOM

Husband of Carol Bloom  
Father of David Bloom and James Bloom

### NENA DILLICK

Mother of Susan Davies and  
Steven Dillick

### EDITH KETCHEL

Mother of Marilyn Peritz, Gail Baron  
and Richard Ketchel  
Grandmother of Sarah Lyngas

### RUTH MARSHALL

Mother of Dr. Lee Marshall and  
Kathy Marshall

### ROBERT ROSS

Husband of Janice Ross  
Father of Evan Ross and Tyler Ross

### JOYCE PHYLLIS SPITZER

Mother of Amy Malla and Randall Spitzer

### JUNE 5-11

RAY MAURICE ABRAMS ISRAEL ABRAMSON *SIDNEY L. ALEXANDER *SOPHIA B. ALEXANDER *JOSEPH ARONS THELMA MAE BEEDELL *GERTRUDE D. BEERBOHM *MALVINA BERG *NEWTON BERNSTEIN GLADYS BEZNOZ *BERTHA S. BLETSTEIN *JOHN L. BROWN SOLOMON BURG	*HENRY M. BUTZEL *HARRY E. BYRON *HENRIETTA COHN *ROSE SHERE COOPER *IDA HELEN COPINSKY CELIA DORF GERTRUDE DWOSKIN *EUGENE J. EPSTEIN *BEN B. FENTON *GEORGE FISCHER AUDREY FISHER JOSEPH FLASCHNER ROBERT LEE FLOYD *DORA LUFT FREEMAN	COLEMAN FRIEDMAN *JOAN FROMM *THEODORE GLASS MARGO GLAZER *ETHEL BARNETT GOLDFARB *ALICE JEAN GOTTESMAN ROSE GREENBERG *BENJAMIN IMBER MARK "TED" JACOBSON DAVID JONES WILLIAM KAHN *GLORIA KALLMAN	NORMAN JEROME KATZ *ELTON R. KELLER RUTH HELEN KLEIN JESSE KOENIGSBERG *MENDEL KORN RUTH KORN BENJAMIN S. KOTT *SUSAN KRAMER BESSIE KROLIK *MAURICE E. LAKSER NORMAN LEE SHIRLEY LEPLER *LUBA LEVENTHAL SARAH LEVIN	*HENRY LEVITT *SIMON LOEWENSTEIN ABRAHAM MARCUS *JOSEPH J. MARKS JEANNETTE MYERS *CHARLES EDWARD NATHANSON *DAVID OPPENHEIM ANTONIO PANGRAZIO *ROSE LIPPMAN PARNES BERNARD PASSER MORRIE POSEN BARRY RAVITZ	*HERBERT N. REINHEIMER ROBERT ROY ROBINSON DR. JACK SALOMON JOSEPH SARAQUE MINA SCHEY *SANDRA J. SCHOLNICK *GRACE SCHREIBER ROSMAN *ESTHER S. SCHUSTER WILLIAM C. SHAPIRO MARILYN PATRICIA "PAT" SIEGEL *AARON SILVERMAN	*HARRIET G. SIMON *PEARL SHERMAN SLOMAN *ROSE SMITH JESSE A. SONN CARRIE SPERLING KERMIT STEUER *DORTHEA LIND SWADE LEONARD WHITE SADIE WOLBERG *MICHAEL ALAN WOLF ANNE WOLMAN
---	---	--	--	---	---	---

### JUNE 12-18

*JACOB ALEXANDER *MORRIS E. BACHMAN *SIMON S. BAER ANNETTE BECHEK *ROSE BENSMAN BENJAMIN BERGHOF *BETTY G. BINDER *NORMAN H. BIRNKRA FLORENCE BLAU *DR. FREDERIC A. BLOCH *MARY BLOOMGARDEN *ELAINE CANVASSER *TILLIE SAZZMAN COHN	BESSIE SHERBIN COLUMBUS *FANNIE DAVIDSON *PROF. CHARLES P. DAVIS *MIRIAM O. DIZIK KAY FINK MILDRED HAYDU FOX *LENA FRANK BERTHA FREEDMAN *ROSE N. FRENKEL FRED GINSBERG *DOROTHY GIRER *JACK DUKE GOLDMAN HERBERT GOLDSTEIN	*GARY M. GOODFRIEND BERTHA GREENBERG SAUL GREENFIELD JACOB GROBMAN *MARION HANDLEMAN KATIE HARTMAN BERNARD HAROLD JENKS *ALFRED C. KAUFMAN *JOHN S. KETCHEL *RUTH S. KLEIN *JACOB KOVINSKY MARIAN KOZLOW *DAVID KURZMAN	MARTIN LEON LAKER *DAVID W. LEACH *HELEN M. LENHOFF THERESA LEOPOLD *GEORGE LEVENSON *ETHEL MACWILLIAMS HAROLD "MARTY" MARTENS *SARAH LEVY MILLER KENNETH MORRIS MARION GORDON MOSKOVITZ *LOUIS S. MUSLINER *BETTY NEDERLANDER	TOBA G. NEUMANN PHILIP OSLANDER *ALFRED WILLIAM PAYSON *JENNIE PITKOWSKY BLANCHE POLLACK LEONARD PRIEST HOWARD RICE *EMANUEL M. ROSENTHAL MARCIA ROSIN EMANUEL ROTHMAN *RUTH ROTHSCHILD CLAIRE RUDICK	*FANNIE B. SAXE *THEODORE SCHWARTZ IDA SHAMES *RAY A. SHAPERO FLORAINA FRANK SHIELDS CLARICE SIDLOW *OSCAR SILVERMAN TAMARA "TIMMY" SILVERMAN TOBI SISMAN *MAX SOLOMON AIDA ROSEN SPERLING *BERNARD SPIEGEL	WILLIAM LOUIS STEIN *FAY STERN GERALD SUCHER CELIA SUGARMAN *PROF. JASON H. TICKTON SUSAN VELICK *BEVERLY PRENTIS WAGNER MAX WEISBROD MARTHA WURM
--	--	--	---	--	--	--

### JUNE 19-25

ANNE ACKERMAN *HELENE ARONSSON ELLEN BATEMAN *YETTA BISGEIER *DAVID M. BLANKE ELSIE LANG BLOCK ABRAHAM BLUTH MARY BRANDWEIN RUTH HERTZ CANNON LUCILLE B. COHEN *JACOB DENENBURG *CLARA EHRLICH	ADELE FAITLER ALEX FELDMAN *SYLVIA KRELL FISHER ELLA FOLTYN *LOUIS FRANKENSTEIN BERNARD FRIEDMAN EDITH FRIEDMAN *LOUIS ALTMAN GOLDENBERG RUTH L. GOODMAN *MABEL GOTTESMAN MICHAEL GREENE	*ALLAN GREENSPAN *ABE GREENSTONE *LILLIAN KRELL FISHER GREENSTONE PESYA GRISHGORINA *MICHAEL GUZ *HILDA C. HARTMAN *WERNER HEILBRUNN BELLA HONEYMAN ROSE HOWARD *DAVID I. HUBAR *ALFRED L. JACOBS	*JACOB B. KAPLAN *RALPH KARDEN *MEYER KLEIN THERESA KOENIGSBERG MARY LABAN TRUDE S. LEUBUSCHER JERRY F. LEVINSON SAMUEL LINSKY *IRETA LURIE *JOSEPH M. MELLON *VICTOR MERDLER *RUDOLPH MEYERSON	*FREDERICK NEDERLANDER CRAIG NEUNER JIM PAUL SEYMOUR POSNER *SARA DUSCOFF ROBERTS *ALVIN M. RODECKER JUDITH ROGOFF *DAVID D. ROLAND DR. JACQUES ROSENFELD *SUZANNE ROSIN	IRVING N. RUBIN *THEODORE B. SALLEN *LOTTIE HELPERT SHAPIRO *BENJAMIN SIEGEL MAURICE SILLS RICHARD SITRON AARON SLAPIN ROSE SMARGON JOSEPH SPITZER *HARRY HOWARD STERNBERG	RALPH STONE *KATE TISCHLER *LOTTIE WEISMAN *MARJORY "RUTH" WEST *ANNA WILKUS *DR. LAWRENCE CHARLES WOLF JEROME RICHARD WOLFE *CARL ZOHOTT
---	---	--	--	---	---	--

### JUNE 26 - JULY 2

FEIGE ACKERMAN *HENRIETTA ALEXANDER *HARRY B. ASH *SAUL J. BIRNKRA MILDRED CHARNAS BERTHA COLMAN CLARA CZISKE *SEYMOUR DUNITZ LILLIAN DUNN RUTH FRANKLIN EINSTEIN BELLA FELDMAN RICHARD DREW GERSHENSON	*LEON GOLDBERG BARBARA "BOBBY" GOLDBURG *FRANCES GRABOW GOLDMAN SAMUEL L. GOODMAN PEARL GREENBAUM MIRIAM HAMBURGER *ADELAIDE K. HARRIS ARLENE EDER HARRIS LILIAN HECHTMAN *NORMAN HELPERT *BERNICE KAHN HOPP *SIDNEY IMERMAN	*STANLEY IMERMAN *CLAIRE LOUISE JACOB *HILDA KIMMEL *PAUL KOVINSKY *SYLVIA G. KUTTNAUER RUBINER HELEN EDER LATTIN HAROLD LEVITT FRANCIS MACKIE SHERRY KIM MALOFF IRVING MARK *FANNY MESHORER *DESSIE MEYERS SEYMOUR S. MORRIS	DIANA NOVACK MAXINE ORDOWER WERNER OSTEN *DAVID KEITH PAGE REBECCA PEARLMAN YETTA PERNIKOFF MARY PLOTNIK ESTHER RABB *SAMUEL J. RANDS ALEXANDER RAZDOLSKY *SADIE RICE *ALEX RUBIN KARL RUDICK	*SARAH LEVITT SAPERSTON BERNICE SCHECTER *HANLEY G. SCHREIBER *SADIE R. SCHUBOT STUART M. SCHWARTZ *RUTH SHAPERO SARAH SHERMAN *LOUIS A. SHERWIN ELIZAVETA SHLEYPAP LEWIS "SKIP" SIEGEL MELVYN "MEL" SILVER *FRED F. SIMMONS ETHEL SLAPIN	*BERNARD SLOAN BORIS SMORGONSKIY SYDNEY STERN *EUNICE STONE BORIS STUTMAN *AMSON C. TABOR *CELIA KAHN TOUFF *LOUIS O. TURNER *FAYE EHRLICH WALLACH *HENRY WEINBAUM ARTHUR WEINER SANFORD WEINER DAVID WEINSTEIN	*MAX WEISS GERTRUDE WEITZMAN ANNA WERBE *GEORGE WISE *SHIRLEY WITUS *MATHEW M. WOLFE MICHAEL ZAMET *BERNARD ZUPMORE
--	---	--	--	--	--	--



# Life Cycles

## JUNE ANNIVERSARIES

<b>June 1</b> Evan & Kelsey Ross	<b>June 7</b> Lawrence & Esther Weitzman	<b>June 15</b> William & Marjorie Sandy Renee & Timothy Siegan	<b>June 21</b> Joseph & Amy Berke Ryan & Lori Hirsch Barry & Susan Lepler	<b>June 26</b> Donald & Eileen Klein Eric & Bridget Kravchenko Neil & Judith Levitt
<b>June 2</b> Mark & Elizabeth Dizik James & Kelly Selander Lyle & Diane Victor	<b>June 8</b> Stuart & Elisa Stoller Jon & Arielle Stone	<b>June 16</b> Robert & Barbara Bachman Brian & Jacqueline Gurwin	<b>June 22</b> Ronald & Cheryl Kerwin Kenneth & Gail Posner Stephen & Elaine Sturman	<b>June 27</b> William & Gayle Floyd Erik & Jacqueline Stamell Daniel Howard & Jennifer Lauren Weckstein
<b>June 3</b> Ethan & Gretchen Davidson	<b>June 9</b> Robert & Susan Dresner	<b>June 17</b> Frederick & Mildred Minkow Eric & Katherine Scher	<b>June 23</b> David & Nadine Farbman Jack & Joanna Geer Harold & Arlene Gendelman Charles & Carolyn Greenberg Harry & Mary Ann Kirsbaum	<b>June 28</b> Joanne & Arnold Danto Michael & Fran Goran Jonathan & Barbara Haber
<b>June 4</b> Leonard & Karen Beznos Richard & Lucille Gersten Jessica & Ryan Gertner Gregory & Nicole Schwartz	<b>June 10</b> David & Mary Miller Robert & Elaine Tell Michael & Carol Ziecik	<b>June 18</b> David & Lisa Feinbloom Michael & Robin Fenberg Norman & Harriet Rotter Steven & Lisa Rotter	<b>June 24</b> Michael & Mary Baru Neil & Barbara Goldman Martin & Carole Schock Sheldon & Heather Siegel	<b>June 29</b> Christopher & Debra Hackman Lawrence & Lori Rapp Daniel & Barbara Redstone Robert & Denise Rosinski Douglas & Sydel Schubot
<b>June 5</b> David & Kathryn Eisenstein	<b>June 12</b> Nelson & Norma Pont Milton & Edith Simmons Harold & Lois Stein	<b>June 19</b> Steven & Francine Menken	<b>June 25</b> Robert & Sandra Weitz	<b>June 30</b> Allison & Jason Cardew Stacy & Gordie Schaeffler Vivian & Gerald Smargon-Cole John & Dana Weber
<b>June 6</b> Otto & Shelley Dube Kalman & Miriam Goren Steven & Lissa Kalt Eric & Patrice Phillips Suzanne & Albert Serlin-Resnick	<b>June 13</b> Andrew & Libby Beider Stewart & Suzanne Levin	<b>June 20</b> Joel & Margot Behrmann Graham & Laura Eddleston Arthur & Sandra Foster Michael & Lana Lembersky Joel & Shelly Tauber		
	<b>June 14</b> Lawrence & Jan Freedman Harold & Rochelle Margolis Kenneth & Helen Stone			

## JUNE BIRTHDAYS

<b>June 1</b> Joe Small Brett Turner Elle Beznos Rebecca Bloom	Rebecca Lynch Ralph Nunez Eli Neuner Emma Neuner Payton Renusch Sydney Rosen Eli Turner	<b>June 9</b> Maxine Ben-Yuri Jan Freedman Gary Goodman Mary Jo Israel Jane Schwartz Treger Strasberg Wendi Zupmore	<b>June 14</b> Marcy Grant Jane Gross Bentley Haimbaugh Abraham Miller	<b>June 19</b> Sigrid Ainhorn Ian Bolton Marc Greenberger Matthew Kessler Heidi Kreindler Benjamin Aaron Hudson Craig RachelGraff Jaden Rockind Madeline Wein	<b>June 23</b> Estelle Egrin Helen Glasser Jonathan Gourwitz Michele Schubot Alan Toby Andrew Weitz Mark Zacks Aliya Epstein Alana Greenspan	<b>June 27</b> Jeffrey Canvasser Richard Goren Leo Hollander Ronald Kerwin David London Alysa Saperstein Alex Scharg Hanna Sorser Casey Stewart
<b>June 2</b> Louis Bradfield Larry Schiff Joyce Welford Stephanie Lester	<b>June 6</b> Lawrence Freedman Suzanne Gilson Jeffrey Goldsmith Aaron Goldstein Sandra Lax Larry Maloff Rabbi Mark Miller Sharon Resnick Sheldon Toll Jack Gross Elise Stotland Alex Weberman G. Robert Weiner	<b>June 10</b> Ronda Reibscheld Jessica Unatin John Weber	<b>June 15</b> Elaine Brockman Marcia Klein Kelly Kling-Selander Jody Webb Holly Weissman Zachary Homer	<b>June 20</b> Trayce Fenton David Gorosh Sam Shamie Walter Shapero Jillian Byer Madison Salzenstein Bridget Strumban	<b>June 24</b> Janis Bloom Norman Fill Ryan Fishman Michael Freedman Stewart Levin Carolyn Nosanchuk Natalie Chaiken J. Jackson Paige Sarah Schoenbart Ava Taylor	<b>June 28</b> Henry Abrams Paul Ross Debbe Saperstein Joel Tauber Karen Turner Robert Vernan
<b>June 3</b> Miriam Cohen Marcia Lewis Beth Michelson Jeffrey Miro Judith Nussbaum Carole Shaw Spencer Freeman Samantha Goldsmith Laura Mucha		<b>June 11</b> Cheri Bielfield David Bloom Sharon Green Laurence Imerman Lillian Reiss Michael Seltzer Matthew Gutman Aiden Kaplan Evan Sachs	<b>June 16</b> Otto Dube Glenn Rosin David Rubinstein Richard Shulman Ethan Kalt	<b>June 21</b> James Colman Earl Remer Spencer Werner	<b>June 25</b> Penny DeVauil Stuart Kayne David Richardson Preston Haimbaugh	<b>June 29</b> Jason Cardew Joanna Geer Joyce Ginsberg James Marks Shelley Roberts Jacqui Foreman
<b>June 4</b> John Cohen Melvin Glaser Beatrice Howard Michael Minkin Howard Rosenberg Jill Syme Sawyer Shulman Jay Victor	<b>June 7</b> Myrna Kolin Neil Simmerman Baker Urdan Stephanie Gerson	<b>June 12</b> Harriet Cooperman Marjory Epstein Joanee Hurwitz Hilary Kotik	<b>June 17</b> Edwina Davis Lynn Newman Denise Rosinski	<b>June 22</b> Joseph Berke James Grosfeld Alex Lubyansky Edith Simmons Jacob Tompkins	<b>June 26</b> Morton Collins Donald Klein JoAnn MacWilliams-Wolf Elaine Schonberger	<b>June 30</b> Susan Abrams Robert Blau William Bloom Susan Borman Sylvia Lee Barry Pearlman Daniel Prohow Julie Yolles Rachel Frenkel Noah Singer
<b>June 5</b> Judith Bergman Joanne Canvasser Jordan Glass Morgan Goodman	<b>June 8</b> Robert Hertzber Eleanore Rose David Rosen Scott Seligman Lauren Guz	<b>June 13</b> Katherine Scher D. Larry Sherman Jonah Lipman Breanne Turner	<b>June 18</b> Miriam Goren Rachel Ann Miller Daniel Reibscheld Pamela Renusch Jill Seltzer Arnold Weingarden Shay Gunsberg			

# JUNE 2016

SUNDAY	MONDAY	TUESDAY	WEDNESDAY	THURSDAY	FRIDAY	SATURDAY
<b>TBE VIDEO STREAMING</b> If you can't make it to Temple for services, you can still enjoy meaningful, uplifting and personal services from anywhere you are. <b>TO WATCH SERVICES LIVE,</b> go to <a href="http://www.tbeonline.org">www.tbeonline.org</a> , and click on the VIDEO STREAMING tab. You can also watch 3 months of previously recorded services. <b>"LISTEN-IN" SERVICES</b> are still available. Call <b>1.866.871.8894</b> and Listen-In live. Code: 882709# Temple is happy to provide this service thanks to generous gifts from The Babs and Herb Kaufman Audio/Video Listen-In Fund and The DeRoy Testamentary Foundation.			<b>9:30 AM</b> Adult Education Classes  <b>12:45 PM</b> Melton Adult Education  <b>6:00 PM</b> Camp Staff Orientation	<b>9:00 AM</b> Torah Study <b>9:30 AM</b> Tot Shabbat <b>10:30 AM</b> Shabbat Services  <b>6:00 PM</b> Bat Mitzvah of Sloane Goldberg	 <b>6:00 PM</b> Patio outside the Sanctuary <b>7:30 PM</b> <b>MUSIC SHABBAT SERVICE</b> Helen Vera Prentis Lande Courtyard	<b>9:00 AM</b> Torah Study <b>9:30 AM</b> Tot Shabbat <b>10:30 AM</b> Shabbat Services  <b>6:00 PM</b> Bat Mitzvah of Sloane Goldberg
<b>10:30 AM</b> Morning Minyan  <b>4:30 PM</b> Star Wars Night Part 2	<b>6:30 PM</b> ECC Committee Meeting	<b>10:00 AM</b> Beth Elders Board Meeting	<b>9:30 AM</b> Adult Education Classes  <b>7:00 PM</b> Intro to Judaism	ECC Last Day	<b>10:00 AM</b> ECC Graduation and Celebration  <b>7:30 PM</b> Summer Shabbat and Confirmation 	<b>9:00 AM</b> Torah Study <b>10:30 AM</b> Shabbat Services  <b>7:00 PM</b> Tikkun Leil Shavuot at Congregation Shaarey Zedek
<b>10:30 AM</b> Yizkor Service  		<b>4:30 PM</b> Executive Committee Meeting		<b>5:00 PM</b> Camp Beth El Orientation <b>7:30 pm</b> Michigan Board of Cantors concert - Berman Theatre	<b>7:30 PM</b> Summer Shabbat Services Brotherhood Installation 	<b>9:00 AM</b> Torah Study <b>10:30 AM</b> Shabbat Services Bar Mitzvah of Adam (Buddy) Sher  <b>2:00 PM</b> BETV program  <b>5:30 PM</b> Bar Mitzvah of Jaden Rockind
<b>10:30 AM</b> Morning Minyan  	<b>9:30 AM</b> Camp Beth El Begins  <b>12:00 PM</b> Great Lakes Music Festival: Beyond the Notes	<b>9:30 AM</b> Camp Beth El  <b>12:00 PM</b> Beth Elders Installation Luncheon w/Paul Vornhagen & Trio Tumbao - The Rhythms of Cuba	<b>9:30 AM</b> Camp Beth El  <b>6:45 PM</b> Great Lakes Prelude & Concert	<b>9:30 AM</b> Camp Beth El  <b>7:30 PM</b> 166th TBE Annual Meeting Board of Trustees Meeting 	<b>9:30 AM</b> Camp Beth El  <b>6:00 PM</b> Rabbi Syme Celebration Dinner <b>7:30 PM</b> Summer Shabbat Services honoring Rabbi Daniel B. Syme 	<b>9:00 AM</b> Torah Study <b>10:30 AM</b> Shabbat Services Bar Mitzvah of Jonah Lipman
<b>10:30 AM</b> Morning Minyan	<b>9:30 AM</b> Camp Beth El	<b>9:30 AM</b> Camp Beth El	<b>9:30 AM</b> Camp Beth El	<b>9:30 AM</b> Camp Beth El		

THE BERMAN  
*Center for the Performing Arts*  
presents  
THE MICHIGAN BOARD  
OF CANTORS  
*Happy Anniversary!*  
*The Story of a Romance*



Join Cantor Rachel Gottlieb Kalmowitz and other cantors in our community in a performance guaranteed to excite your senses and elevate your soul!

**THURSDAY, JUNE 16, 2016 • 7:30 PM**

DESSERT RECEPTION FOLLOWING

Tickets begin at \$40 and can be purchased online at [theberman.org](http://theberman.org) or by calling 248.661.1900 M-F, 10 AM - 4 PM.



# Shabbat Services

*Your Spirit, Your Life, Your Temple.*

## FRIDAY, JUNE 3

- 6:00 PM Summer Shabbat Kick-Off BBQ  
Patio outside the sanctuary.  
7:30 PM Summer Shabbat Service  
Helen Vera Prentis Lande Courtyard.

## SATURDAY, JUNE 4

- 9:00 AM Torah Study  
9:30 AM Tot Shabbat  
10:30 AM Shabbat Services. Torah Reader: Tommy Sherman  
6:00 PM **BAT MITZVAH OF SLOANE ELISABETH GOLDBERG**



Sloane is the daughter of Stacy Goldberg & Dale Goldberg and the older sister of Spencer Goldberg. Proud grandparents are Phyllis & Richard Canvasser. She is also the granddaughter of the late Irene & Herbert Goldberg. Sloane attends Berkshire Middle School in Birmingham and Camp Tamarack in the summer. For her Mitzvah Project, Sloane collected food, items and monetary

donations for the Downtown Boxing Gym in Detroit, which helps to develop good citizenship in urban youth through academic support, boxing and volunteering.

## FRIDAY, JUNE 10

- 7:30 PM Summer Shabbat Service with Confirmation

## SATURDAY, JUNE 11

- 9:00 AM Torah Study  
10:30 AM Shabbat Services. Torah Reader: Sue Green  
7:00 PM Tikkun Leil Shavuot at Congregation Shaarey Zedek

## FRIDAY, JUNE 17

- 7:30 PM Summer Shabbat Service

## SATURDAY, JUNE 18

- 9:00 AM Torah Study  
10:30 AM Shabbat Services



### **BAR MITZVAH OF BUDDY MAXWELL SHER**

Buddy is a student at Dunckel Middle School. He is a sports fan, a bigger Superhero fan but most of all a Youtube and Computer nut. He was an assistant administrator on a major Minecraft site, until they found out he was nine years of age. Since then he became a moderator and cast member for

Mango, and has his own YouTube Channel. Buddy enjoys the family canoe trip and has perfected the art of floating a tube and hitching a ride. He is a fourth generation Tamarack camper, and is returning this summer to Pioneer. Family events and holiday celebrations are a large part of his life and yearly he helps plan a family Halloween Party. Buddy is the son of Stephanie & Jonathan Sher and Brenda & Paul Weinstock and enjoys a full and hectic life with his brothers; Dylan & Ben and sisters; Hannah, Mia, Rachel, Jaidyn & Bella. He is the grandson of Granny Janny, Papa Bob & Grandma Janet, Papa Norm & Grandma Jill, Muggy & Paddy, Grandpa Greg and Baba & Zada.

## 5:30 PM **BAR MITZVAH OF JADEN LEVI ROCKIND**



Jaden is in the 7th grade at Derby Middle School in Birmingham. The youngest son of Karen & Neil Rockind, Jaden is a devoted University of Michigan fan, and loves to attend football games proudly wearing the maize and blue. He is also an extraordinary athlete and plays both football and lacrosse for different teams. Jaden is passionate about music, sports and loves playing Call of Duty

on the X-Box. While Karen and Neil are proud of Jaden for his many accomplishments, it is Jaden's friendliness and concern for others that is truly remarkable. He is the first to greet and the last to say goodbye to his grandparents, Larry and Gladys Rockind, and his grandmother, Phyllis Bove. Discussing his now deceased grandfather, George Bove, brings him to tears. He is proud of both his sister and brother, Aliya and Harley, both students at Seaholm High School.

## FRIDAY, JUNE 24

- 6:00 PM Rabbi Syme Celebration  
7:30 PM Summer Shabbat Service

## SATURDAY, JUNE 25

- 9:00 AM Torah Study  
10:30 AM Shabbat Services



### **BAR MITZVAH OF JONAH BENJAMIN LIPMAN**

Jonah is a 7th grade honor student at OE Dunckel Middle School in Farmington Hills. He enjoys reading, Tae Kwon Do, and playing video and board games. Jonah is the son of Beth Lipman and Blake Lipman & the brother of Arielle. Sharing in his simcha are his loving

and proud grandparents Rona and Saul Grossman and Marlene Lipman. Jonah is also the grandson of the late Jerome (Jerry) Lipman.



### *The Perfect Ending Each Shabbat...Enjoying Food With One Another*

Each Friday evening and Saturday morning, following services, we gather together to share in the Oneg Shabbat or Kiddush and enjoy one another's company. We ask you to consider helping maintain this festive atmosphere with a donation to the Oneg/Kiddush Fund to help defray the costs when there is no sponsor. Your gift will be recognized at services. To sponsor a Friday evening Oneg or Saturday morning Kiddush or contribution, contact Marianne Myers at 248.851.1100 or mmyers@tbeonline.org.



TEMPLE  
BETH EL

7400 Telegraph Road  
Bloomfield Hills, Michigan 48301  
[www.tbeonline.org](http://www.tbeonline.org)  
248.851.1100

Periodicals  
Postage Paid at  
Royal Oak, MI

TIME VALUED

#### CLERGY

Mark Miller, Rabbi  
Daniel B. Syme, Rabbi  
Rachel Gottlieb Kalmowitz, Cantor  
John H. Redfield, Honorary Cantor Emeritus

#### STAFF

Kim Raznik, Executive Director  
Deborah Morosohk, RJE, Director of Education  
Claire Danaher, Chief Financial Officer  
Allan N. Friant, Sr., Building Superintendent  
Susie Weiner, Director of Early Childhood Education  
Joseph Unger, Director of Youth Engagement  
Brett Panter, Communications Coordinator  
Alan Lowen, B'nai Mitzvah Coordinator  
Jim Gabriel, Accompanist  
Jan Durecki, Archivist  
Eileen Polk, Librarian  
Joe Winter, Cemetery Superintendent  
Thomas Jablonski, Executive Director Emeritus

#### OFFICERS

L. Steven Weiner, President  
Jordon Wertheimer, First Vice President  
David Foltyn, Vice President  
John Kessler, Vice President  
Maxine Lievois, Vice President  
Robin Fenberg, Treasurer  
Liz Modell, Secretary

#### AFFILIATES

Maxine Ben-Yuri & Elaine Brockman, Beth Elders  
Julian Prince, Brotherhood  
Janelle McCammon, Sisterhood  
Loren Schwartzenfeld & Forest Wolfe, The Kid-ish Club  
Rachel Frenkel & Hannah Myers, Beth El Temple Youth (BETY)

**SUMMER  
Kick-Off  
BARBEQUE**

**•AND•**

**SHABBAT  
SERVICE**

**FRIDAY  
JUNE  
3**

**6:00 PM**  
**BBQ with all the fixin's**  
**PATIO OUTSIDE THE SANCTUARY**  
Lawn games for all ages: Frisbee, hula hoops,  
bocce ball, and an ESKIMO JACK'S  
ICE CREAM TRUCK!  
\$10 adults, \$5 kids.

**7:30 PM Music Shabbat**  
**HELEN VERA PRENTIS**  
**LANDE COURTYARD**  
Join us for a lively and interactive service,  
featuring our Music Shabbat band.  
**OPEN TO THE COMMUNITY!**

For more information or to RSVP by phone, contact Laura Lucassian at 248.851.1100 or [llucassian@tbeonline.org](mailto:llucassian@tbeonline.org).