



the **Bulletin**

LEARN MORE ABOUT THE MENSCH ON A BENCH ON PG 2

VOL. 32 | ISSUE 3

**DECEMBER 2017/JANUARY 2018
KISLEV/TEVET 5778**

TEMPLE BETH EL ... OUR SPIRIT IS GROWING



Join **Rabbi Mark Miller**,
Cantor Rachel Kalmowitz
and fellow members of
Temple Beth El in our
nation's capitol for the most
important days impacting
the U.S.-Israel relationship.



750 speakers
share their knowledge

535 Congressional appointments
to advocate for a safe and secure Israel

1 opportunity
to make your voice heard and strengthen
the U.S.-Israel relationship

For more information about Temple Beth El's delegation, or to register for the conference, please contact Laura in the Rabbis' Study at llucassian@tbeonline.org or 248.851.1100.

CLERGY COLUMN

A MESSAGE FROM RABBI MARK MILLER



If you are a fan of the show "Shark Tank," you may remember a special holiday episode in December of 2014. Aside from the usual items, a former Hasbro toy executive named Neal Hoffman walked onto the show to pitch his "Mensch on a Bench."

The idea had been brewing for two years, since his son asked if they could get an "Elf on the Shelf" (a trendy Christmas toy that parents might hide around the house for their kids to find). Hoffman's wife is Catholic and they are raising their kids Jewish, so they struggle with the same "December Dilemma" that many families do each year – how to approach the holiday season in their interfaith household. Instinctively, Hoffman replied: "Dude, we're Jewish. You can't have an elf on a shelf, but you can have a mensch on a bench."

From there, his imagination went into overdrive – he wrote a children's book about Moshe, a gentle man who spent eight days watching over the sacred oil in the Temple for the Maccabees, and developed a corresponding toy that kids could enjoy with their own menorah. But I think the reason Hoffman's mensch has been so successful is that he tapped into something deeper than a simple toy.

First, he did exactly what Jews have been doing for thousands of years - putting a new twist on an old tradition. We don't celebrate Hanukkah the way our great-grandparents did, and they don't celebrate it the way their families did back in the old country. Same Maccabees, same miracle of the oil - but new customs have always kept the occasion fresh for new generations.

And second, he found a way to bridge the gap between cultures in his home - bringing Christmas and Hanukkah a little bit closer together - while maintaining the unique beauty of our own heritage. Which is not an easy task. We don't want to lose Hanukkah in a society where Christmas is everywhere ... ironically, that is the central message from the story of the Maccabees' struggle against Greek culture.

But I think we are better off when we explore the vital similarities between our traditions, so that we can celebrate Hanukkah in a way that allows us to share the "holiday spirit" with our neighbors. When we do, we unleash the Mensch within each of us.

Wishing you and your family a peaceful Festival of Lights!

Rabbi **MARK MILLER**
mmiller@tbeonline.org

CONTENTS

TBE BULLETIN



**TWO JEWS,
THREE
OPINIONS:**
Conflict and
Compromise
within the
Jewish
Community

» p.12



4 **YOUR TEMPLE WORKING FOR YOU**

6-7 **HANUKKAH**

8-13 **UPCOMING PROGRAMS/EVENTS**

14-19 **FAMILY FUN / ECC / EDUCATION CENTER**

20-21 **AROUND TEMPLE**

23-26 **LIFE CYCLES**

27-30 **ANNUAL APPEAL/TRIBUTES**



MAZEL TOV RABBI BRUDNEY ON YOUR ENGAGEMENT TO ZACH BERG!



TEMPLE
BETH EL

Temple Beth El, U.S.P.S. 075360 is published monthly. Temple Beth El, 7400 Telegraph Road, Bloomfield Hills MI. Periodicals postage paid at Pontiac, Michigan. Postmaster send address change to: Temple Beth El, 7400 Telegraph Road, Bloomfield Hills, MI 48301

YOUR TEMPLE WORKING FOR YOU

END OF LIFE



ANDY BRODER

In the Spring of 2015, Temple hosted a 5-session program that allowed participants to explore the legal, medical, ethical, and religious aspects of End of Life decision-making. It was the brainchild of Andy

Broder, a Temple member who has spent much of his legal career helping people address these complex and emotional issues. Hundreds of people turned out, seeking advice and expertise for themselves or their loved ones.

Since then, Rabbi Miller and Andy have been working on a practical way to make these tools and guidance accessible to our Temple members on an ongoing basis. As a result, we have established a confidential “End of Life Hotline” so that you or your loved ones can find caring and professional answers to the questions you may have about these vital decisions.

Contact the hotline at 248.325.9701. Your inquiry will be received confidentially by Rachel Rudman, Director of Member Relations, who will then connect you with the most appropriate expert for your specific question. Our team includes Andy Broder, an attorney who specializes in End of Life issues; leading doctors and nurses from the Hospice of Michigan; and our own Temple clergy.

Visit tbeonline.org for more information about this new service at Temple Beth El – and know that we are always here for you, at all stages of life.

*Temple Beth El has 167 years of history, nearly 1,100 member families, and a calendar packed with opportunities to connect, learn, celebrate, and volunteer. But just as important, our Temple is here to provide resources, guidance, rituals, and spiritual counseling for a range of special moments throughout your lifetime. Each month, this page will help you explore the various aspects of what Temple has to offer, with specifics about how to take advantage of your membership. **For example:***

BRIS/BABY NAMING: Special ceremonies at Temple, your home, or elsewhere to bless a new child, give them a Hebrew name, and welcome them into the Covenant of the Jewish People.

AUFRUH: Celebrate your upcoming wedding at Temple by receiving a blessing from the *bimah* during Friday night services, or coming up to the Torah for an *aliyah* on Saturday morning.

ANNIVERSARIES: Beginning in 2018, we will honor those celebrating “quinquennial” (every 5 years) anniversaries with a special blessing on the *bimah* during a Friday night service. For those married 50 years or more, please let us know so we can prepare a special gift – you are an inspiration to us all!

BLESSING YOUR HOME: A mezuzah can make a house feel like a Jewish home, and our clergy are available to help you affix a mezuzah with a simple ceremony to bless your home.

SPIRITUAL COUNSELING: Life is filled with beauty, but it also contains difficulties. Judaism has a lot to offer, and our compassionate clergy are here to talk with you confidentially about any emotional, spiritual, or religious concerns you would like to discuss.

HOSPITAL VISITS: Whether you or a loved one are in the hospital for surgery, illness or another reason, we are here to offer comfort, spiritual guidance, and practical support. Our clergy visit hospitals throughout the metro area regularly, and are ready with a prayer, song, or gentle conversation.

ELDER CARE: No matter how much we love our aging family members, it can be overwhelming to deal with the emotions that come with changes in their needs and abilities – Temple is here to help.

SHIVA CORPS: After a funeral, it is customary to gather for Shiva to share stories, comfort one another, and join together for a brief service. In addition to our clergy, the TBE Shiva Corps is a group of volunteers who are ready to provide an opportunity to share memories and say Mourner’s Kaddish surrounded by community.

UNVEILING: Near the end of the first year after the death of a loved one, we return to the cemetery for an “unveiling” ceremony to install and bless a permanent marker at the gravesite.

For more information, or to let us know what’s going on in your life, contact Rachel Rudman, Director of Member Relations, at rudman@tbeonline.org or 248.851.1100.

The Temple COOK BOOK

Compiled by the Ladies
of the
Woman's Auxiliary Association
of
TEMPLE BETH EL
Detroit, Michigan.

PRICE ONE DOLLAR

1903.
Published by
THE JEWISH AMERICAN PUBLISHING CO.,
DETROIT, MICHIGAN.

COURTESY OF THE RABBI LEO M. FRANKLIN ARCHIVES, C. 1903



CONFIRMATION CLASS OF 1899, RABBI LEO M. FRANKLIN ARCHIVES. KATHERINE SLOMAN IS ONE OF THE THREE YOUNG WOMEN IN THIS PHOTOGRAPH. RABBI FRANKLIN IS IN THE CENTER, THIS WAS HIS FIRST CONFIRMATION CLASS.

1903 IN THE “D” WITH TBE

Cream Potato Soup
by Katherine T. Sloman (c.1903)

*1 saltspoon = 1/4 teaspoon
Three potatoes, one pint of milk, one-half table-
spoonful of flour, one tablespoonful of butter,
one tablespoonful of chopped onion, one-fourth
saltspoon* of cayenne pepper, one-half saltspoon*
of celery salt, one-half saltspoon* of pepper,
chopped parsley. Boil the potatoes and mash them,
put the onion in the milk and scald it. Cream the
butter and flour, add the seasoning then add this
to the milk. Put in potatoes and let the whole
cook until thick, strain it and add the parsley.

The author of this 115-year-old recipe has a Temple Beth El history of her own. Katherine Sloman grew up on Fourth Street in Detroit in a family of Temple leaders. She was one of three young women confirmed at Temple in 1899 and her class photograph can be found on the walls of the Religious School today. Katherine went on to graduate from the Cass School in Detroit in 1902. She is also named in the Detroit Free Press on a few occasions for her performances in local vocal shows. Katherine's parents were both heavily involved Temple members. Her mother, Mrs. Lotte Sloman, was the first President of the Women's Auxiliary Association (now The Women of Temple Beth El) and her father, Mr. Adolph Sloman, was a chairman of the Sabbath School Committee (now the Religious School Committee). Both of them are thanked and have their photographs included in the book *A History of Congregation Beth El 1900-1910*. In June of 1914, Katherine Sloman and Arthur Heintzelman were married by Temple Beth El's Rabbi Leo M. Franklin. Temple Beth El's Sisterhood is a founder of the National Federation of Temple Sisterhoods (Women of Reform Judaism, A Centennial Celebration). The Women of TBE have their current cookbook available in the gift shop. The Temple Cook Book of 1903 features recipes from many Beth El women with ingredients and measurements not commonly used today. Interested in the cookbooks of years past? Come visit the Rabbi Leo M. Franklin Archives and flip through the books collected from the various decades throughout the last century.

Laura Williams

LAURA WILLIAMS Curator
lwilliams@tbeonline.org



How to Play Dreidel



Dreidel is a traditional Hanukkah game played in Jewish homes all over the world, and rules may vary.

HERE'S HOW TO PLAY THE BASIC DREIDEL GAME:

1. Any number of people can take part.
2. Each player begins the game with an equal number of game pieces (about 10–15) such as pennies, gelt, chocolate chips etc.
3. At the beginning of each round, every participant puts one game piece into the center "pot." In addition, every time the pot is empty or has only one game piece left, every player should put one in the pot.
4. Every time it's your turn, spin the dreidel once. Depending on the side it lands on, you give or get game pieces from the pot. For those who don't read Hebrew, some dreidels also feature a transliteration of each letter. If yours doesn't, use the photo below as a cheat sheet:
5. If you find that you have no game pieces left, you are either "out" or may ask a fellow player for a "loan."
6. When one person has won everything, that round of the game is over!

DREIDEL LETTERS:

- a) Nun means "nisht" or "nothing." The player does nothing.
- b) Gimel means "gantz" or "everything." The player gets everything in the pot.
- c) Hey means "halb" or "half." The player gets half of the pot. (If there is an odd number of pieces in the pot, the player takes half of the total plus one).
- d) Shin means "shtetl" or "put in." The player adds a game piece to the pot.



Lighting the Hanukkah Candles



1. בָּרוּךְ אַתָּה יי אֱלֹהֵינוּ מֶלֶךְ הָעוֹלָם אֲשֶׁר קִדְּשָׁנוּ בְּמִצְוֹתָיו וְצִוָּנוּ לְהַדְלִיק נֵר שֶׁל חֲנֻכָּה.

Baruch atah, Adonai Eloheinu, Melech haolam, asher kid'shanu b'mitzvotav v'tsivanu l'hadlik ner shel Chanukah.

Blessed are You, Adonai our God, Sovereign of all, who hallows us with mitzvot, commanding us to kindle the Hanukkah lights.

2. בָּרוּךְ אַתָּה יי אֱלֹהֵינוּ מֶלֶךְ הָעוֹלָם שֶׁעָשָׂה נִסִּים לְאַבוֹתֵינוּ בַּיָּמִים הָהֵם בְּזֶמֶן הַזֶּה.

Baruch atah, Adonai Eloheinu, Melech haolam, she-asah nisim la'avoteinu (v'imoteinu) bayamim hahaeim baz'man hazeh.

Blessed are You, Adonai our God, Sovereign of all, who performed wondrous deeds for our ancestors in days of old at this season.

(Said on the first night only)

3. בָּרוּךְ אַתָּה יי אֱלֹהֵינוּ מֶלֶךְ הָעוֹלָם שֶׁהַחַיִּינוּ וְקִיָּמָנוּ וְהִגִּיעָנוּ לְזֶמֶן הַזֶּה.

Baruch atah, Adonai Eloheinu, Melech haolam, shehecheyanu v'kiy'manu v'higianu laz'man hazeh.

Blessed are You, Adonai our God, Sovereign of all, for giving us life, for sustaining us, and for enabling us to reach this season.

TEMPLE - WIDE HANUKKAH SERVICE

FRIDAY, DECEMBER 15

6:00 PM

MENORAH LIGHTING & FESTIVE SHABBAT SERVICE!

Bring your menorah to light

7:00 PM

HANUKKAH PARTY

Hors D'oeuvres & Latkes - Cookie Decorating - Games - Gelt - and more!

- DREIDEL COMPETITION -



**PRIZES INCLUDE: A DRONE, AN AMAZON FIRE TABLET,
BLUETOOTH SPEAKERS, AND SO MUCH MORE!**

For more information, contact Joey at junger@tbeonline.org.



TBE UPCOMING PROGRAMS/EVENTS

DECEMBER



01

MUSIC SHABBAT

FRIDAY, DECEMBER 1
7:00 PM

High energy, spiritual, and thought-provoking service. Special oneg with hot chocolate bar and s'mores.

02



TOT SHABBAT

SATURDAY, DECEMBER 2
9:30 AM (Ages 0 – 6)

A fun, musical Saturday morning experience.



03

LASER TAG

SUNDAY, DECEMBER 3
NOON (3rd–5th Graders)

Enjoy a fun afternoon playing laser tag with friends! Details on page 19.



10

MASORET: ALIGNING OUR FOOD WITH OUR JEWISH VALUES

**Presenter: Sue Salinger,
Director, Hazon Detroit.**

SUNDAY, DECEMBER 10
10:30 AM

For 3,000 years, Judaism has encouraged us to think critically about the food we eat, the land our food comes from, and the ways our food choices affect the health of our community and our planet. In this session, we'll taste a bit of text and we'll create our own preserves for the winter from local ingredients. The more people are able to understand their own relationship to food and land, and simultaneously, to Jewish tradition, the more we will engage in creating healthier and more sustainable communities for all!



10

MITZVAH SINGS
**Meer Apartments &
Fleischman Residence**
SUNDAY, DECEMBER 10
TUESDAY, DECEMBER 19

Our Temple Beth El Choirs love to share Hanukkah music with those in senior living facilities. On Sunday, December 10, the TBE Youth Choir will perform at Meer

Apartments at 3:00 pm, and at Fleischman Residence at 2:15 pm. On Tuesday, December 19, the TBE Adult Choir will sing at Fleischman Residence at 6:30 pm. We hope you will join us!



13

BETH ELDERS LUNCHEON

WEDNESDAY, DECEMBER 13
NOON (\$10 per person)

Welcome Hanukkah with the Beth Elders and The Heartland Klezmerim! Enjoy lunch with Latkes and more, followed by the music of the Heartland Klezmerim, a six piece band that will keep your toes tapping to old & new Klezmer tunes, Yiddish folk melodies, and Jazz interpretations from the Yiddish theater. Sponsored by the Howard and Celia Jacobson Memorial Fund for the Beth Elders of Temple Beth El. RSVP by December 6 to Betty Applebaum at 248.476.1775 or Rachel at rudman@tbeonline.org.



13

ECC HANUKKAH CONCERT

WEDNESDAY, DECEMBER 13
6:00 PM

Please join us as your children sing together on stage to celebrate Hanukkah! Questions? Details on page 16.



15 TEMPLE-WIDE HANUKKAH SERVICE

FRIDAY, DECEMBER 15
6:00 PM (All Ages)

Join your Beth El friends and family for a festive service and a Hanukkah Party with hors d'oeuvres and latkes, cookie decorating, games, gelt, dreidel competition, and much more. Details on page 7.



16 BETY GOES SKATING (BETY/NFTY EVENT)

SATURDAY, DECEMBER 16
5:00 PM (9th – 12th Graders)

Enjoy a fun evening with friends as we venture downtown to Campus Martius for ice skating and more! Details on page 19.



17 TBE'S BROTHERHOOD SPEAKER SERIES

SUNDAY, DECEMBER 17
9:30 AM

Join us for this fun, informative event with MernaLyn, nationally respected author of the award-winning book; *The 10 Second Diet!* Signed copies of her book will be available upon request, with a generous percentage of the proceeds going directly to the Temple Beth El Brotherhood.

17 BETY SOUP KITCHEN

SUNDAY, DECEMBER 17
NOON



TBE's Soup Kitchen Initiative is a monthly opportunity for TBE teen families to volunteer to help feed the hungry at the Detroit Orthodox Outreach Soup Kitchen. Details see page 19.



MITZVAH Day 2017
The tradition continues.

25 MITZVAH DAY

DECEMBER 25

Volunteer with TBE on Christmas Day! We will be volunteering with Cass Community Social Services in their kitchen from 9am–12pm (ages 10+), and with Detroit Area Agency on Aging delivering meals-on-wheels 8am – noon (families welcome). Register at mitzvahdaydetroit2017.eventbrite.com (make sure to indicate you're with TBE). For more information, contact Rachel rudman@tbeonline.org or 248.851.1100.

WELCOME HANUKKAH WITH THE BETH ELDERS AND THE HEARTLAND KLEZMORIM!

NOON LUNCHEON WEDNESDAY, DECEMBER 13

\$10 PER PERSON

Enjoy lunch with Latkes and more followed by the music of the Heartland Klezmerim.

RSVP by Dec. 6 to Betty Applebaum at 248.476.1775 or Rachel at rudman@tbeonline.org.



Are You a Member?

BETH ELDERS MEMBERSHIP

\$15
YEARLY
MEMBERSHIP
DUES

Name: _____

Address: _____

Email: _____

Phone: _____

DUES: \$ _____ DONATION: \$ _____
(Howard & Celia Jacobson Memorial Fund for the Beth Elders)

TOTAL AMOUNT ENCLOSED: \$ _____

Questions, contact Elaine Brockman at 248.893.7711.

For questions about Temple programs/events, contact Director of Member Relations, Rachel Rudman at rudman@tbeonline.org or 248.851.1100.



TBE UPCOMING PROGRAMS/EVENTS CONT.

JANUARY



INTRODUCTION TO JUDAISM

Join Rabbi Mark Miller and Rabbi Megan Brudney for 12 engaging sessions about the history, traditions, core values, and modern-day practice of Jewish life. This course is the first step toward conversion, but is open to anyone interested in learning more about Judaism. The course will cover a wide range of topics, including:

Sacred texts

Jewish holidays and the Jewish calendar

Prayer

Israel

Ethics

Life cycle

Reform, Orthodox, and everything in between

WEDNESDAYS AT 7:00 – 8:00 PM
IN THE TBE LIBRARY:

January 17, 31 (Tu Bish'vat)

February 14, 28

(6:15 PM, Adult Purim Celebration)

March 14, 28

April 11 (6:30 PM, Yom Hashoah), 25

May 9, 19 (Tikkun Leil Shavuot)

June 6, 20

Cost is \$72/person. Please contact Laura Lucassian at (248-865-0602 or llucassian@tbeonline.org) for more information, or to register.



05

MUSIC SHABBAT

FRIDAY, JANUARY 5
7:00 PM

High energy, spiritual, and thought-provoking service. Special oneg with fondue spread, sparkling cider/champagne, and chocolate covered strawberries.



12

LAWSON WEEKEND

JANUARY 12-14

Join us as Lawson goes to Indy! \$250 per teen (subsidies available). RSVP by Friday, December 22 to Joey. Details on page 18.



14

MASORET: TU BISH'VAT AND THE SEVEN SPECIES

Presenter: Rabbi Mark Miller
SUNDAY, JANUARY 14
10:30 AM

Although you may know Tu Bish'vat is the "birthday of the trees," or that it is a chance to think about our Jewish connection to the environment ... you may not know that our celebration of this holiday is based on enjoying the "Seven Species". Join Rabbi Miller for an exploration of our connection to the Land of Israel that will include tasting a collection of fruits, nuts, and even wine!



INTRODUCTION TO JUDAISM

WEDNESDAYS, JANUARY – JUNE
7:00 PM

Join our Rabbis for 12 engaging sessions about the history, practice, and values of Jewish life.



**18 DSO NEIGHBORHOOD CONCERT:
BEETHOVEN &
TCHAIKOVSKY**
THURSDAY, JANUARY 18
7:30 PM

Enjoy a night out with TBE's Brotherhood at the Berman Center for the Performing Arts at the JCC in West Bloomfield. Pre-concert dinner at G. Georges on Northwestern. RSVP by January 7 to Julian Prince at 248.851.626.6641 or broprez@comcast.net. Limited seating. \$10 Brotherhood Members, \$20 Spouse/TBE Members.

**18 BITES & BOOKS
RABBI AKIVA: SAGE
OF THE TALMUD**
By Barry W. Holtz
THURSDAY, JANUARY 18
10:00 AM & 7:00 PM

Born in the Land of Israel around the year 50 C.E., Rabbi Akiva was the greatest rabbi of his time and one of the most important influences on Judaism as we know it today. This book is a compelling and lucid account of the life and teachings of a founder of rabbinic Judaism and one of the most beloved heroes of Jewish history. Facilitated by Rabbi Mark Miller.



19 FAMILY PROGRAM
FRIDAY, JANUARY 19
5:00 PM (4th and 5th Graders)

Religious School families are invited to join us for an evening of learning, sharing, and celebrating Shabbat! Dinner \$5 per person.



**19 SHABBAT IN THE
ROUND +
QUINQUENNIAL
ANNIVERSARIES**
FRIDAY, JANUARY 19
7:00 PM

Join us for a participatory service using rounds as our guide – in shaping our space, in sharing our music, and in bringing each other into a circle of ruach (spirit) and prayer. We will also honor those celebrating January quinquennial anniversaries.

21

**BROTHERHOOD
SPEAKER SERIES**
SUNDAY, JANUARY 21
9:30 AM



Gregory Flynn, Fire Chief of West Bloomfield Township, will address interesting aspects of fire prevention, fire suppression, and paramedic responses.

26

TBE Kid-ish Club
**SMALL FRI SHABBAT
TU BISH'VAT PARTY**
FRIDAY, JANUARY 26
5:30 PM (Ages 0 – 6)

Come celebrate nature on Tu BiSh'vat, the Jewish new year for trees, with the Kid-ish Club! Details on page 14. \$10 adult/\$5 child.



**27 SHABBAT SHIRA
SERVICE**
SATURDAY, JANUARY 27
10:30 AM

Join us in worship and song as we read the parashah that includes the Song of the Sea, with joyful participation from the TBE Adult and Youth Choirs.



**28 JBETY- CAN YOU
ESCAPE?**
SUNDAY, JANUARY 28
NOON

Join JBETY for an awesome adventure at the Royal Oak Great Escape Room! Details on page 19.

TBE UPCOMING PROGRAMS/EVENTS CONT.

FEBRUARY

RABBI MARK MILLER IN CONVERSATION with... STEVEN GIMBEL



TWO JEWS, THREE OPINIONS:
Conflict and Compromise
within the Jewish
Community

THURSDAY, FEBRUARY 15 @ 7:00 PM

● Free and open to the community

Professor Gimbel will speak about long-standing and contemporary conflicts in the Jewish community. The old joke is that if you have two Jews, you have three opinions. Is it possible to patch these divisions? Is it desirable, or does Judaism need to be multifaceted? How can we see this as a strength instead of a source of internal strife?

Professor Steven Gimbel holds the Edwin T. Johnson and Cynthia Shearer Johnson Distinguished Teaching Chair in the Humanities at Gettysburg College in Pennsylvania, where he also serves as Chair of the Philosophy Department. He has written and edited seven books, over thirty articles, and has two video series in the *Teaching Company's Great Courses Offerings*. He holds a Ph.D. from Johns Hopkins University. His books have been reviewed in *The New York Times*, *The New York Review of Books*, *The Wall Street Journal*, *The Times of London*, and *Scientific American*.

For information or to RSVP, contact Rachel Rudman at rrudman@tbeonline.org or 248.851.1100.

Generously sponsored by Dr. Stanley Levy



02

**MUSIC SHABBAT +
NEW MEMBER
BLESSING**

FRIDAY, FEBRUARY 2
7:00 PM

High energy, spiritual, and thought-provoking service. Join us as we welcome our newest members into our Temple family with a blessing on the bima. Members who have joined in the past year are invited for a complimentary dinner at 5:30pm, invitation to follow.

**FUND
raiser**

08

**ECC FUNDRAISER
Formerly New Year/
New You**

THURSDAY, FEBRUARY 8
6:00 PM (\$36 per person)

ECC Parents gather for a fundraiser. Open to the community. Details on page 14.

09

FRIDAY NIGHT LIGHTSFRIDAY, FEBRUARY 9
6:00 PM

Save the date for the next event with K-5 K'hilah Club, a community of families with elementary-aged kids. Short service, Shabbat dinner, and Game Night! More info to follow.



10


Kid-ish Club
TOT SHABBAT WITH BORN YOGASATURDAY, FEBRUARY 10
9:30 AM (Ages 0 – 6)

Join us for this Yoga workshop of on Shabbat. FREE and open to the community. Details on page 14.



11

MASORET: THE AMERICAN CHEESE REVOLUTION
Presenter: Zach Berg
SUNDAY, FEBRUARY 11
10:30 AM

A discussion of American cheese culture and the Artisan revolution of the last 30 years. Zach Berg, of Provisions in Ferndale, will take us on a journey from American processed cheese to Farmhouse Cheddar.



11

SLEDDING WITH TBE!SUNDAY, FEBRUARY 11
NOON (3rd – 5th Graders)

Join us for a fun day of sledding and hot cocoa with your friends from Temple! Details on page 19.

15

IN CONVERSATION WITH STEVEN GIMBEL
Two Jews, Three Opinions
THURSDAY, FEBRUARY 15
7:00 PM

Professor Gimbel will speak about long-standing and contemporary conflicts in the Jewish community. Details on page 12.

25

BROTHERHOOD SPEAKERSUNDAY, FEBRUARY 25
9:30 AM

Dave Scott, General Manager of Civic Center TV and President/CEO of Motown Digital, will give an overview of current cable programming, and forecast developments in the cable industry.



28

PURIM PARTY ESTHER'S 80s PROMWEDNESDAY, FEBRUARY 28
7:00 PM (Adults)

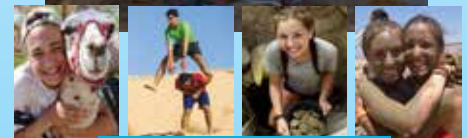
We'll sing and dance to '80s hits, enjoy light hors d'oeuvres by Cutting Edge Cuisine, and maybe even spike the punch bowl! See back cover for details.

Don't miss THE EXPERIENCE of your life!

SUE & ALAN KAUFMAN & FAMILY
JEWISH FEDERATION OF METROPOLITAN DETROIT

TEEN MISSION TO ISRAEL
WITH COMMUNITY CONGREGATIONS AND TAMARACK CAMPS
SUMMER 2018

JUNE 25 – JULY 20


teenmissiondetroit.org
2017 - 2018 Grades 9 - 12 Eligible

For more info on participating or staffing this amazing Israel experience, contact Rabbi Brudney at mbrudney@tbeonline.org or 248.851.1100.



UPCOMING PROGRAMS



Creating a welcoming Jewish community for families with young children, ages 0-6.

TOT SHABBAT @ 9:30 AM

A fun, musical Saturday morning experience.

DECEMBER 2

FEBRUARY 10 – BORN YOGA

MARCH 24

MAY 12

SMALL FRI SHABBAT @ 5:30 PM

JANUARY 26 – TU BISH'VAT PARTY

MARCH 2 – PURIM FUN

APRIL 27

SUMMER KICK-OFF

JUNE 1 @ 5:30 PM

For more information, contact
Rabbi Megan Brudney at
mbrudney@tbeonline.org or 248.851.1100.

K-5 K'hilah Club

K'hilah means Community, and our goal is just that – to create a community of families with elementary – aged kids who are connected to each other, to our clergy, and to our congregation.

FRIDAY NIGHT LIGHTS

FEBRUARY 9 @ 6:00 PM

MOVIE NIGHT

MARCH 18 @ 5:00 PM

MITZVAH DAY

MAY 6 @ NOON

SUMMER KICK-OFF

JUNE 1 @ 5:30 PM

For more information, contact
Cantor Rachel Gottlieb Kalmowitz at
rgk@tbeonline.org or 248.851.1100.

SMALL FRI SHABBAT: TU BISH'VAT PARTY

FRIDAY, JANUARY 26 @ 5:30 PM (Ages 0 – 6)



Come celebrate nature on Tu BiSh'vat, the Jewish new year for trees, with the Kid-ish Club! We'll be singing, planting, and then enjoying dinner together in our pop-up forest.

RSVP by Monday, January 22 to
Rabbi Brudney at mbrudney@tbeonline.org or 248.851.1100. Cost: \$10 adult/ \$5 child

KID-ISH CLUB: TOT SHABBAT WITH BORN YOGA

Saturday, February 10 @ 9:30 AM (Ages 0 – 6)



Join us for this Yoga workshop on Shabbat. Learn how Shabbat, as the day of rest, and yoga make the perfect combination!

Free and open to the community.

The Recap

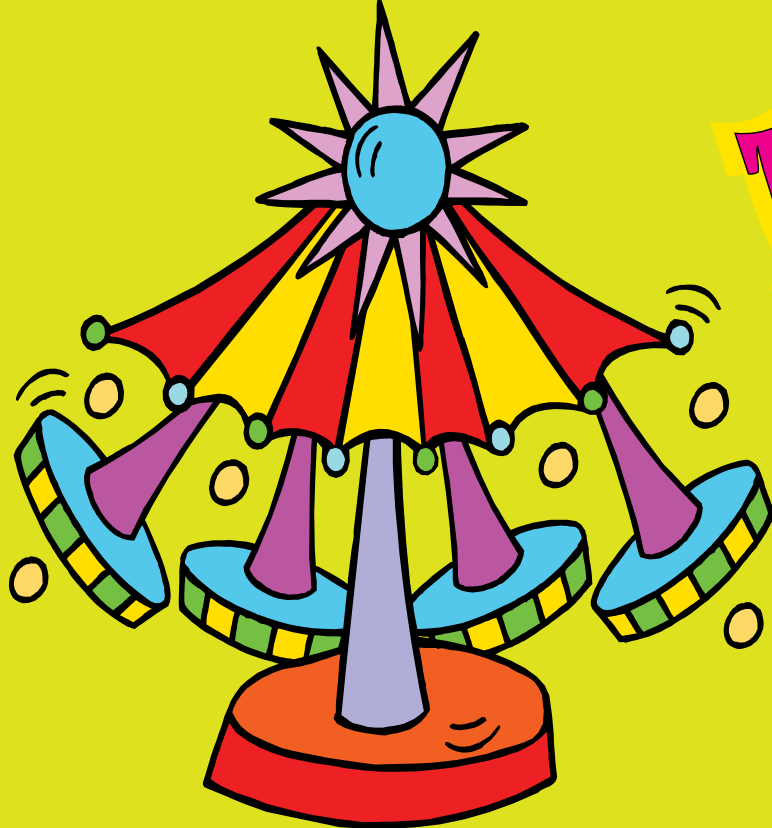
KID-ISH CLUB: ALL ABOARD NOAH'S ARK

On Saturday, November 12, Kid-ish Club members and guests joined together for a fun morning of Tot Shabbat: All Aboard Noah's Ark, in partnership with **jbabydetroit**.

K-5 K'HILAH CLUB – MITZVAH DAY

On Sunday, November 19, the K-5 K'hilah Club worked with **Project Linus** to make blankets for kids in local hospitals!





PURIM CARNIVAL

A Shushan Extravaganza!

SUNDAY, MARCH 4

NOON – 2 PM • HANDLEMAN HALL

**KIDDIE CARNIVAL FOR KIDS UNDER FIVE
IN THE ALPERT ROOM.**

**Lazer Tag, Test Your Strength,
Moonbounces, Face Painting,
Mechanical Bull, Lazer Tag, Bounce
House, Games, Food,
Costume Parade & Prizes!**

**.50 cents per ticket. Unlimited wristband \$20 dollars.
POPCORN, SNOW CONES, AMAZING PRIZES.**

To become a donor or to volunteer, contact Joseph Unger at
junger@tbeonline.org or 248.851.1100.

BRAND NEW GAMES, PRIZES, AND A SLEW OF OTHER SURPRISES!





UPCOMING PROGRAMS

ECC HANUKKAH CONCERT

WEDNESDAY, DECEMBER 13 @ 6:00 PM

ECC FUNDRAISER

THURSDAY, FEBRUARY 8 @ 6:00 PM

PTO MEETING DATES

Wednesdays DECEMBER 6 @ 6:30 PM
JANUARY 10 @ 6:30 PM
FEBRUARY 14 @ 9:10 AM
MARCH 21 @ 9:10 AM
MAY 9 @ 6:30 PM

PTO Chairs:
Nicole Van House
Erin Simmerman

STAY INFORMED!



JOIN US ON FACEBOOK

SEARCH

TEMPLE BETH EL EARLY CHILDHOOD CENTER

ECC NO SCHOOL SCHEDULE

DECEMBER 25 – JANUARY 5 (WINTER BREAK)
MONDAY, JANUARY 15 (MLK DAY)
WEDNESDAY, JANUARY 24: ECC CLOSING 12:30 PM
CONFERENCES 1:30 – 7:00 PM
PARENTS MEET INDIVIDUALLY WITH THEIR
CHILD'S TEACHERS
MONDAY – TUESDAY: FEB 19 – 20
(MID-WINTER BREAK)



JUST MENTION TBE ECC
AT THE CHECKOUT!

DEC 2017 | JAN 2018 | TBEONLINE.ORG



EARLY CHILDHOOD CENTER HANUKKAH CONCERT

WEDNESDAY, DECEMBER 13 @ 6:00 PM



ECC families, please join us as each age group sings on stage in Handleman Hall. Enjoy latkes, dreidel games, and gelt. Drop off your child in their classroom at 5:50 PM

Questions? Contact Jen at jgoren@tbeonline.org or 248.851.1100.

ECC FUNDRAISER Formerly New Year/New You

THURSDAY, FEBRUARY 8 @ 6:00 PM



ECC Parents gather for a fundraiser to help support all of the wonderful programs in our ECC. RSVP by Thursday, February 1, to Susie Weiner at sweiner@tbeonline.org or 248.851.1100. \$36/person – open to the community.



A TRADITION BEGINS

Last month, nine families attended TBE's first ECC Family Camp at Tamarack. We had gorgeous weather that allowed us to be outside all weekend. The dock was very busy with fishermen/women and many paddle boat rides were taken. The staff from Tamarack took care of our every need and the food was just terrific. We were honored to have Rabbi Brudney, Rabbi Miller, Cantor Gottlieb Kalmowitz and Debbie Morosohk all visit us during our camp overnights. The Havdalah service by the campfire Saturday night was spectacular. There's nothing like roasting marshmallows on an open fire with thousands of stars shining overhead. All of the families loved Family Camp so much that we have already booked a weekend for next year: October 19-21, 2018. Don't miss out on the second annual weekend as the tradition continues.

Susie Weiner

SUSIE WEINER ECC Director
sweiner@tbeonline.org

“

Family Camp with our Temple Beth El Family proved to be everything and more! An experience that we will never forget! Wyatt really enjoyed his first camp experience with friends new and old, and by the end of the weekend he did not want to leave. As for Andrew and me, we liked our evening activities bonding with other parents and the adult ropes element was definitely a highlight! So excited for next year!!!

Ali, Andrew and Wyatt Weitz

”

“

It was an incredible weekend for our family — experiencing the outdoors, celebrating Shabbat, reliving the magic of camp, and bonding with TBE friends old and new.

Memories we will cherish forever!

Gillian, Jason, Elan & Jacob Tamaroff

”



JOIN BETY ▶ JANUARY 12-14

LAWSON GOES TO INDY!

Enjoy this weekend adventure with your friends!

Trip highlights include:



TOURING & SERVICES AT INDIANAPOLIS HEBREW CONGREGATION



WORKING AT WHEELER MINISTRIES SHELTER



INDOOR ZIPLINING



BUBBLE SOCCER



ROCK CLIMBING



LASER TAG



RHYTHM DISCOVERY CENTER

AND MUCH MORE!



Lawson heads to Indianapolis for an exciting weekend of community service and amazing activities Friday, January 12th through Sunday, January 14th!

COST IS \$250 PER TEEN

▶ PRICE INCLUDES BUS, HOTEL, AND ALL FOOD & ACTIVITIES FOR THE WEEKEND. SCHOLARSHIPS ARE AVAILABLE!

For more information or to RSVP, contact Joey Unger at junger@tbeonline.org.

The Lawson Youth Institute trip, generously sponsored by the Ellin and Harold Lawson Youth Institute Fund, is an annual weekend of service, friendship and learning for Temple Beth El teens.



ADULT EDUCATION COURSES @ TBE

WEDNESDAY OFFERINGS

BEGINNING CONVERSATIONAL HEBREW

JANUARY 10 – MAY 9, 2018 7:00 – 8:00 PM

This class is for those who know how to decode Hebrew, but want to know what the words mean. We'll learn some basic modern vocabulary and grammar, enough to build simple sentences.

\$60 members / \$90 non-members

ADULT B'NAI MITZVAH/BEGINNING HEBREW

JANUARY 10 – MAY 9, 2018 7:00 – 8:00 PM

First semester will begin in January and will focus on learning to read Hebrew. Did you miss out on becoming a Bar/Bat Mitzvah when you were 13? Would you like to learn more about Hebrew, prayer, and Torah? Would you like to be part of a learning community working toward a meaningful ceremony?

JAN – MAY, 2018: Beginning Hebrew

SEPT – DEC, 2018: Understanding our Prayer Service

JAN – MAY, 2019: Torah Study & Ceremony Preparation

SPRING 2019: Adult B'nai Mitzvah Ceremony

\$60 members / \$90 non-members

For more information or to register, contact Ilene at istone@tbeonline.org or 248.865.0612.

The Recap ▶

7TH GRADE FIELD TRIP

TBE's 7th grade field trip to Oakland Avenue Urban Farm in Detroit. The students enjoyed learning about our Jewish agricultural laws and how they can inform our lives today, and helped close out the garden.

KINDERGARTEN FAMILY PROGRAM

On Sunday, November 5th, Kindergarten families spent the morning together in Religious School. They learned about the Sh'ma and explored ways to bring prayer and Jewish practice into their homes. Families left with a Family Prayer, A Sh'ma Bedtime Book, and Sh'ma Pillowcase.



3 - 5 GRADE LASER TAG**Sunday, December 3 @ NOON** (3rd-5th Graders)

Join us for a fun afternoon of Laser Tag at Zap Zone in Farmington Hills! Lunch provided.

BETY GOES SKATING (BETY/NFTY EVENT)**Saturday, December 16 @ 5:00 PM** (9th – 12th Graders)

Enjoy a fun evening with friends as we venture to Campus Martius for Ice Skating and more! \$45 per teen, register at Michigan.nfty.org/events

JBETY- CAN YOU ESCAPE?**Sunday, January 28 @ NOON** (6-8th Graders)

Join JBETY for an awesome adventure at the Royal Oak Great Escape Room! Enjoy lunch and then team up to see whose team can escape the room the fastest! RSVP by Friday, January 19 to Joey.

SLEDDING WITH TBE!**Sunday, February 11 @ NOON** (3rd – 5th Graders)

Join us for a fun day of sledding and hot cocoa with your friends from Temple! Come dressed warm and meet us at the West Bloomfield Library. An alternative program will be provided if sledding is not an option. Lunch provided.

FOR MORE INFORMATION OR TO RSVP ON ANY OF THESE UPCOMING EVENTS, CONTACT JOEY AT JUNGER@TBEONLINE.ORG.



TBE SOUP KITCHEN INITIATIVE



**SUNDAY, DECEMBER 17
NOON**

**CARPOOL LEAVING TEMPLE
AT NOON**

**RETURNING TO TEMPLE
BY 3:00 PM**

TBE's Soup Kitchen Initiative is a monthly opportunity for TBE teen families to volunteer to help feed the hungry at the Detroit Orthodox Outreach soup kitchen.

OPEN TO ALL TEMPLE MEMBERS

Future dates: January 21, February 25
March 25, April 29, May 20, and June 3

GOING GREEN!

TBE INITIATIVES

Most people today recognize that climate change is a far-reaching issue, resulting in a wave of projects and initiatives over the past few decades designed with sustainability and the safekeeping of our environment in mind.

To that end, the Temple Beth El Board of Trustees decided to participate in Hazon's 2017 Seal of Sustainability, a national program that offers mini-grants and support to create healthier, more sustainable communities in the Jewish world and beyond. A Green Team, spearheaded by Cantor Kalmowitz, was formed to develop tangible ways in which TBE could make progress on at least three such initiatives. TBE's green initiatives include:

- Purchasing, with the Hazon mini-grant, an attractive wooden recycling bin for the Slotkin Foyer.
- Ensuring ease of recycling by putting 3 labeled bins in every space in the building, for paper, plastic, and trash.
- Building standing plant beds in the religious school garden, at Cindy Bolokofsky's suggestion and with Al Friant's skills.
- Installing motion detectors, due to the generosity of Jennifer and Jeff Hollander, in all bathrooms, the bride's room, and the mailroom.
- Replacing all screw-in light bulbs, which were installed nine years ago at 23 watts per bulb, with 14 watt LED bulbs – each saving 40% cost per bulb.
- Replacing an old catering water-cooled walk-in refrigeration unit, which wasted 1.5 gallons per minute, with a fan-cooled system, saving an estimated \$5,000 per year between energy and sewerage usage.
- Shutting down two 6.2 million BTU boilers from May 1st until October 1st, which were used to heat water for two small bathrooms, and replacing them with just one small boiler rated at 260,000 BTU's, saving an estimated \$40,000 per year.

The list of green accomplishments continues to grow at Temple, not to mention proposals submitted for larger-scale initiatives, such as installing an energy wind turbine, a purpose-built water well for Temple lawn maintenance, as well as geothermal conservation projects. Among the many wonderful things that TBE stands for, it's also important to help lead the way for current and future generations when it comes to preserving and sustaining our precious environment.

If you'd like to hear more about this program, feel free to contact Cantor Kalmowitz at rgk@tbeonline.org.

JIM RICE
TBE Board Member

AARON DAVID MILLER GULLIVER'S TROUBLES

On **Thursday, November 9**, TBE hosted, in collaboration with JCRC/AJC, Aaron David Miller. Members and non-members enjoyed a wide-ranging conversation about US foreign policy...highlighting Saudi Arabia, Iran, and of course Israel.



WOMEN OF TBE WINE AND CHOCOLATE EVENT

On **Saturday, November 18** The WTBE held their 5th Wine & Chocolate event. Featuring wine tasting, chocolate samplings, a wine pull, food by Cutting Edge Cuisine, music by John Persico, and a silent auction. Funds raised support the Leo M. Franklin Archive, Library, and Braille Bindery, as well as other Temple and community programs.





LADIES NIGHT OUT GLASS FUSED MENORAH

Local artists Gail Rosenbloom Kaplan and Dani Katsir joined us on **Tuesday, November 14** and helped TBE participants design their very own personalized glass fused menorahs. Just in time for Hannukkah!!!



DECEMBER BIRTHDAYS

DECEMBER 1

Adrian Christie
Sandra Foster
Joseph Inwald
Gail Lorber
Lee Marks
Brenda Passer

DECEMBER 2

Sara Blum-Stapleton
Nevin Kanner
Erik Morganroth
Sandra Reitelman
Mark Shaevsky
Harold Stein
Ailene Steinborn

DECEMBER 3

Isaac Aronson
Rhoda Dicken
Jake Geiringer
Julie Gutman
Bryan Sandler
Davis Victor

DECEMBER 4

Jan Dunn
Talia Sachs
Forest Wolfe

DECEMBER 5

Christopher Beider
Christine Colman
Paula Schonberg

DECEMBER 6

Linda Finkel
Andrea Golombek
Elaine Hartman
Zoey Hill
Beth Morris
E. Jeffrey Shaya

DECEMBER 7

Marcia Applebaum
Reuven Avi-Yonah
Howard Belkin
Michelle Chekan
Jennifer Hoffa
Micah Issner
Darryl Kaplan
Jillian Selander
William Stein

DECEMBER 8

Laura Berman
Linda Dresner
Raymond Lambert
Mary Miller
Ellen Sasson

DECEMBER 9

Brandon Beider
Micayla Greenberg
Jeremy Modell
Evelyn Prince
Felicia Radin

DECEMBER 10

Arlene Rubinstein
Alexandra Wertheimer

DECEMBER 11

Laura Herkowitz
Gina Salzenstein
Carly Wurn

DECEMBER 12

Andrew Farbman
Mary Ann Grawi
David Kaner

DECEMBER 13

Jennifer Bielfield
Eva Coopersmith
Louise Sable
Mark Segel

Mary Ann Simon
Carol Tarnowsky

DECEMBER 14

Carolyn Greenberg
Elizabeth Guz
Daniel Harold
Katie Kantor
Cathy Lambert

DECEMBER 15

Colleen Altman
Emma Geiringer
Rachel Pludwinski
Evan Ross

DECEMBER 16

Carol Bloom
Robert Canvasser
Barbara Collins-Fong
David Kelman
Karen Rockind
Jerry Shagrin
Gary Stone

DECEMBER 17

Tristan Kreindler
Carter Lutz
Eric Medwed
Alice Risov
Sheldon Stern
Ella Taub
Sara Taub

DECEMBER 18

Julie Brown
Lori Dresner
Bette Entin
Patty Frenkel
Jacob Miller
Matthew Shane

Robert Sipher
Emily Unger

DECEMBER 19

Marcus Beckett
Marcia Buch
Robert Horwitz
Michelle Leader
Jeffrey Mendelson
James Rice
Jane Smitt
Barry Spilman
GoGo Taubman
Elaine Werney

DECEMBER 20

Mark Benyas
Liv Bortman
Harold Dunn
Leo Fantich
Abby Foltyn
Lily Foltyn
Ryan Harold
Maya Mazur
William Nosanchuk
Steven Siporin
Charles Werney

DECEMBER 21

Daniel Boorstein
Natalie Canvasser
Joshua Geer
Brady Graff
Raphael Lame
Abbey London

DECEMBER 22

Kalman Goren
Corey Jacoby
Helen Katz
Elena Levine

Chase Powers
Alan Schwartz

DECEMBER 23

Joseph Fearon
Lorraine Jansky
Thomas Millman
Charles Broh
Camryn Brown
Natasha Dabrowski

DECEMBER 24

William Dash
Howard Gurwin
Ida Lucas
John Mucha
Nolan Munk
Elissa Schwartz
Samuel Stone

DECEMBER 25

Andrew Camden
Anita DeVine
Kimberly Gurwin
Amanda Sloan
Dina Sorser
Arthur Steuer
Rick Unger

DECEMBER 26

Brian Dickerson
Ronald Fenwick
Jill Gun
Esther Simon

DECEMBER 27

Ronald Gruskin
Roan Lewis
Lawrence Pazol
Ari Rothstein

DECEMBER 28

Rochelle Dube
Carol Egrin
Kenneth Gutman
Paige Hackman
Marjorie Kanner
Justin Levine
Stacy Merolla
Michael Sher
Robert Taubman

DECEMBER 29

Suzanne Bluestein
Gretchen Davidson
Riley Dorfman
Julie Greenberg-Hazan
Rita Rozenzweig
Jonathan Sher
Elaine Tell

DECEMBER 30

Ryan Goodman
Jordan Kaplan
Dolly Lax
David Rand
Mallory Shaevsky
Nancy Shamie

DECEMBER 31

Leonard Gross
Luke Jacobson
Leslie Mandell
Sadie Mazur
Joel Behrmann
Deena Lockman
Jake London
Sara Minkin
Owen Rattner
Robert Sills

DECEMBER ANNIVERSARIES

DECEMBER 1

Rose & David Handleman
Miriam & Ronald Kottler

DECEMBER 2

Carol & Adam Pollak

DECEMBER 4

Miriam & Laurence Imerman

DECEMBER 6

Jill & Daniel Syme

DECEMBER 7

Shelley & Richard Farkas

DECEMBER 8

Ann & David Conrad
Heather & Jeffrey Vieder

DECEMBER 10

Katherine & Fred Yaffe

DECEMBER 11

Jayne & Steven Craig
Jennifer & Michael Fishman
Nancy & Martin Myers

DECEMBER 12

Mynetta & Adrian Christie

DECEMBER 15

Sharyl & Alan Ackerman
Jo Ann & Douglas Nyquist

DECEMBER 16

Kelli & Zvi Rosenzweig

DECEMBER 18

Linda & Robert Finkel

DECEMBER 19

Aleksandra & Howard Adelson
Julie & Hanley Gurwin

DECEMBER 20

Marion & Michael Freedman
Nancy & Harold Josephson
Sylvia & Lawrence Lee
Ruth & Gilbert Plotnik
Susan & Andrew Saxe
Trudi & Henry Wineman II

DECEMBER 21

Barbara & Benjamin Collins-Fong
Laurie & Blake Lipman
Sandra & Lee Marks
Marion & Paul Rubin

DECEMBER 22

Marla & Mark Canvasser

DECEMBER 23

Harriet & Richard Cooper

DECEMBER 24

Helen & Martin Katz

DECEMBER 26

Cheryl & Stan Chodun
Wendy & Jeffery Roth
Elise & Bryan Sandler

DECEMBER 27

Deena & Stuart Lockman
Elizabeth & Alan May

DECEMBER 28

Nancy & Brian Kott
Laurie & Michael Nedelman
Renata & Donald Turner

DECEMBER 29

Margot & Jerome Halperin
Jane & D. Larry Sherman

JANUARY BIRTHDAYS

JANUARY 1

David Canvasser
Robert Davis
Ryan Flynn
Dennis Frank
Mildred Gilbert
Sheryl Krasnow
Suzanne Levin
Jacob Tennenhouse
Matah Vishovski Dayan
Gloria Wolk

JANUARY 2

Lyla Garfield
Eila Haberman
Elizabeth Kaplan
Steven Kohler
Betty Robinson

JANUARY 3

Janet Aronoff
Jody Boorstein
Rochelle Broder
Matthew Fink
Mark Glazer
Brian Gurwin
Dana Kelman
Jeffrey Novick
Adeline Sherman
Douglas Victor

JANUARY 4

Noa Altman
Mia Bragman
Max Cherrin
Douglas Kravchenko
Elisa Stoller
Darren Weiss

JANUARY 5

Michael Cahn
Marla Canvasser
Mania Glazer
Annette Kuttner
Alexandra Rubin
Andrew Saxe
Lucy Sher
Scott Wolf

JANUARY 6

Joan Abraham
Judith Bateman
Beth Goodfriend Blum
Eric Engelson

Cheryl Grand
Emily Jacoby
Katlin Jacoby
Karen Lowen
Adam Lutz
Frayda Riger
James Selander
Renata Turner
Marilyn Weiss

JANUARY 7

Gail Danto
Raymond Henney
Irene Soble

JANUARY 8

Lina Berman
Lawrence Epstein
Marcy Fisher
Shira Good
Linda Klein
Stacy Klein
Noa Madvin
Judith Redmond
Carole Schock
Jan Silverman
William Stroube

JANUARY 9

Macy Bolton
Andrew Broder
Sarah Licavoli
Bonnee Woodberg

JANUARY 10

Aliza August
Elliott August
Jade Fantich
Jade Fantich
Justin Geller
Sally Goldman
Christopher Hackman
Hayden Herschelmann
Rae Nachbar
Rebekah Schwartz

JANUARY 11

Phyllis Billes
Dale Fuller
Harper Isdamer
Gordon Maltz

JANUARY 12

Chloe Cohen
Sheila Hall

Bruce Jacob
Benjamin Lambert
Jacob Rotter
Herbert Saperstein
Nicholas Scavone
Micah Schwartz
David Stoddard
E. Emilie Weiner

JANUARY 13

Brynn Canvasser
Jason Canvasser
Janice M Cutler
Randal Gordon
Sandra Rosin
Jessica Sachs
Max Shienbaum
L. Steven Weiner
Isaiah Weissberg
Whitney Weissberg

JANUARY 14

Bradley Babitch
Laurence Baker
Lois Benson
Richard Berg
Marie Brandt
Philip Entin
Jill Fill
Thomas Klein
Lawrence Rapp
Albert Watnick

JANUARY 15

Eleanor Barron
Margot Behrmann
Ryan Chekan
Aaron Litt
Kendall Marra
Sally Marx
Bella Papsin
Jane Weberman
Margaret Winkelman

JANUARY 16

Phyllis Gantman
Wendy Hauser
Susan Pappas
Josh Salhaney

JANUARY 17

Evan Eisenberg
Cheryll Israel
Isabel Leader

Nicole London
Anita Pastor
Eugene Rubin
Stefani Shaffer-Pond

JANUARY 18

Laura Aronson
Oliver Ellenson
Patricia Katskee
Elizabeth Modell
Marilyn Rubin
Richard Shaw
Jason Tamaroff
Mia Turner
Burton Wolfe

JANUARY 19

Isabel Berlin
Brian Berman
Sara Bolton
Lawrence Lester
Lindsay Miller
Anne Sloman
Ilene Stone

JANUARY 20

Dylan Babitch
Isaac Ellenson
Oscar Genser
Jacqueline Gurwin
Eli Mendelson
Regina Piche
Justin Radin
Tyler Radin
Ryan Simmons
Jennifer Taylor-Haughey
Nadine Zonder

JANUARY 21

Ryan Becker
Shelly Cooper
Martin Frenkel
Kate Glencer
Susan Kessler
Eitan Perehodnik
Stuart Schwartz
Jeffrey Stutman
Janice Vanstrien

JANUARY 22

Harriet Boren
Jennifer Fishman
Grady Panza
Rebecca Pernick

Stirling Victor
Zachary Weisberg
Zoe Yourofsky

JANUARY 23

Jack Beavers
Lindsey Fox-Wagner
Cadyn Geller
Nancy Gershenson
Margot Halperin
Sylvia Hirsch
Harlow Marra
Maya Pensler
Sydney Robin
Bernice Rosenthal
Trogan

Kelsey Ross
Susan Shwayder
Russell Steinman
David Weissman

JANUARY 24

Robert Brody
Allison Cardew
Brady Feld
Maxwell Golombek
Samarah Herkowitz
Cameron Radin
Matthew Wolf

JANUARY 25

Jacob Bice
Todd Budisak
Paul J. Dizik
Stephen Fisher
Marcello Mollo
Samantha Rosenberg
Natalie Shamie
Stephanie Sills
Samantha Templin

JANUARY 26

Donald Epstein
Stephanie Harold
Jacob Kalt
Brooke Margulies
Jeffrey Roberts
Leah Tron
Barbara Waldbott
Robert Weitz

JANUARY 27

Jeremey Dunn
Dylan Glass
Ruth Katz
Dana Loewenstein
Joel Rosenfeld
Julie Sinclair
Morris Weiner
Bruce Wolf

JANUARY 28

Penny Deitch
Jennifer Hollander
Storm Kirschenbaum
Lawrence Kraft
Jacqueline Remer
Alecia Rice
Nicole Van House
Dennis Weber
Laura Williams

JANUARY 29

David Baril
Jeremy Brandt
William Lawson
Jessica London
Collette Rosner
Walter Wolpin

JANUARY 30

Andrew Bass
Alex Burnstein
Barbara Cohen
Mary Ann Kirsbaum
Richard Leland
Emily Trumble
Dorothy Vernan
Michael Ziecik

JANUARY 31

Andrew Chernoff
Jordan Ettinger
Landon Halprin
Ian Malin
Janelle McCammon
Emma Morganroth
Sharon Raab
Jeffrey Rosenthal
Allen Ross
Linda Sherman
Jack Wineman

JANUARY ANNIVERSARIES

JANUARY 4

Rochelle & Morris Weiner

JANUARY 6

Erin & Aaron Lewis
Barbara & Larry Schiff

JANUARY 7

Karen & Ronald Fenwick

JANUARY 8

June & Albert Watnick

JANUARY 9

Bella & Lev Shleypak

JANUARY 11

Jeri Ann & John Dolch

JANUARY 12

Nicole & Christopher Kovenich

JANUARY 13

Cynthia & Michael Hecht

JANUARY 16

Nancy & William Edmunds

JANUARY 17

Lauren & Wesley Herrin

JANUARY 18

Joanee & Stephen Hurwitz

JANUARY 19

Patricia & Clifford Katskee
Rita & Herbert Packard

JANUARY 25

Judy & Samuel Jassenoff

JANUARY 26

Mary & Lawrence Epstein

JANUARY 28

Phyllis & Bruce Billes
Judith & Lawrence Pazol

JANUARY 29

Susan & Marc Abramson

JANUARY 30

Shelly & Peter Cooper

SUNDAY, DECEMBER 3 - SATURDAY, DECEMBER 9

ETHEL ALTMAN * VIVIAN AXELROD * ELLEN BARNETT DR. SAUL BARNETT MORRIS BARON * BEATRICE ELEANOR BEITMAN * HERMAN BERMAN BERNARD BORENSTEIN * ELIZABETH H. BRODIE JUDGE BENJAMIN D. BURDICK	SONIA CHRISTIE EDWARD COHEN LESLIE E. COLBURN * JOSEPH DEYOUNG IRIS FELDMAN * JACK FRANK * SANDRA BALABAN FRANK AARON FRIEDMAN * MARTIN L. FRIEDMAN PAUL GACH * CLARA GERSTEN * ADA S. GLAZER	SAM H. GOODMAN * HERMAN GRAND IRVING A. GRAND * SYLVIA SIMON GREENBERG RUTH GURWIN * JUDGE SAMUEL C. HALPERT * SARAH HANDLEMAN ABRAHAM HENDIN MILTON M. HOWARD * GEORGE S. JACKSON	* MILTON JANSKY * ABIGAIL KATZ HERMAN KATZ MURRAY D. KATZ * SAMUEL GEORGE KEYWELL BEN KLAR ARLENE KLEINBERG * DOROTHY J. KOPLOY * IRINA KUCHEROVA * AID KUSHNER SAMUEL LEVENSON	MARILYN LEVINE * HERMAN LIEBERMAN * FREDERIKA LOEWENSTEIN * AUDREY BENSON MANDEL HYMAN MYER MARGOLIS RICHARD MARKS * HENRY MEYERS LEE ELLEN MONCHNIK * GOLDYE JEAN NELSON * GEORGE POLASKY ELLIS RABB * MYRTLE REDISCH	RICHARD REINICKE JOSEPH HARRY REMER MATHILDE ROSEFF SAMUEL ROSENFELD MARILYN DOLLY ROTENBERG BERNICE RUBY AARON RUSUNIK FAYE SAFFER DOROTHY SCHAFER ILSE W. SCHILD ABE A. SCHMIER	* MURRAY W. SCHREIBER ZELDA SHAY * LEOPOLD J. SNYDER * HERMAN SPRINGER DR. JOHN STURMAN MARTHA TAYLOR SHIRLEY WARD * MELVILLE WARREN ARNOLD WEINBERGER JULIUS D. WURM * JOSEPH E. ZITOMER
----------------------------------------------------------------------------------------------------------------------------------------------------------------------------------------------------------------------	--------------------------------------------------------------------------------------------------------------------------------------------------------------------------------------------------------------------------------	---------------------------------------------------------------------------------------------------------------------------------------------------------------------------------------------------------------	---------------------------------------------------------------------------------------------------------------------------------------------------------------------------------------------------------------	---------------------------------------------------------------------------------------------------------------------------------------------------------------------------------------------------------------------------------------------------------	--------------------------------------------------------------------------------------------------------------------------------------------------------------------------------------------------------------------	-------------------------------------------------------------------------------------------------------------------------------------------------------------------------------------------------------------------------

SUNDAY, DECEMBER 10 - SATURDAY, DECEMBER 16

EDITH BARIL * EVELYN W. BARON * NATHAN BLOCH RITA RUTH BRENNAN FRED IRA BROWN * HARRY BROWN * ROSE BROWN * ROSE JACOBS BYRON * MICAH DONALD CANVASSER * DR. SAMUEL J. CHAFETS LILLIAN CRANIS	* MARION DAVIDSON * SIDNEY DENENBURG * AL DRESCHER * MINNA ELLIMAN SHIRLEY KEYWELL FLETCHER * LEOPOLD FREUD CLARA FRIEDMAN * EMANUEL M. FRIEDMAN * SARA GARD * JENNIE GINSBURG * MAX GOLDBERG	* JENNIE GOTTFRIED HARRY GREENBAUM * DAVID HANDLEMAN SR. BENJAMIN HILTON * LILLIAN HIRSCHFIELD DAVID HOLLANDER ANNE ISNER * BETTY JO GOLDMAN JANEWAY * DOROTHY M. KARBEL * DAVID PAUL KATZ DR. PAUL KERWIN	* SHELDON B. KRAUSE * ANNA LAZAROF * CELIA LEFTON GERALD L. LEOPOLD MARJORIE F. LEOPOLD * CHARLES M. LEYTON * LOUIS LUMEL * EDITH LURIE BETTY MARKS * SAUL VICTOR MATTUS * BENJAMIN MESHORER HAROLD PHILLIP MILLER	* HARRY J. MILLMAN LEO E. MORRIS SYLVIA NEDELMAN * MORTON NEWLANDER RUTH OBERNDORF BERNARD PESICK MELBA R. PRENTIS MIRIAM RATTNER MAX ROSEN * ARTHUR T. ROSENBERG * SARAH ROSENZWEIG ALEXANDER RUBIN	DAVID MITCHEL RUDICK * BERNARD SAMUELS BERYL SAVAGE DR. DAVID HAROLD SAXE PHILLIP SCHONBERGER JARED "BUD" SCHUBINER ABRAHAM SCHUBOT * SAMUEL SCHUBOT * MILTON SHAFRAN DOUGLAS MARTIN SHUBOW * ETHEL SILVERMAN * FREDA STAUB	GLORIA STEINBERG DR. LAWRENCE STOCKER * MAX STULBERG BERNICE VIVIANO MAXINE WALLS * SOPHIA WEIL ALBERT WEISS * WILLIAM WENST DORIS WHITE * DOROTHY WILLIS * RUTH S. YOUNG JOYCE ZISHOLZ
-------------------------------------------------------------------------------------------------------------------------------------------------------------------------------------------------------------------------------	--------------------------------------------------------------------------------------------------------------------------------------------------------------------------------------------------------------------------------	---------------------------------------------------------------------------------------------------------------------------------------------------------------------------------------------------------------------------------------------	-----------------------------------------------------------------------------------------------------------------------------------------------------------------------------------------------------------------------------------------------------	---------------------------------------------------------------------------------------------------------------------------------------------------------------------------------------------------------------------------------------	--------------------------------------------------------------------------------------------------------------------------------------------------------------------------------------------------------------------------------------------------------------	--------------------------------------------------------------------------------------------------------------------------------------------------------------------------------------------------------------------------

SUNDAY, DECEMBER 17 - SATURDAY, DECEMBER 23

MARK ARSENAULT SIMON AXELROD JEROME W. BAER MARILYN BERMAN * JOSEPH S. BING * BASIL I. BLATNIKOFF DEBRA B. BOORSTEIN * VERA BRODE * DAVID A. BROWN IRVING CHASNICK BURTON CLAMAGE LIEBE CLAMAGE LESTER EDMUNDS * MORITZ I. FEISENBERGER	* JOSEPH FINK * JEROME J. FRANK WILLIAM FREED * HELEN FREEMAN EDITH GANS ROBERT GASSEL AARON GELLERMAN * HARRY GERSON * JULIE ANNE GERSTEN * IRVIN GIRER * GEORGE GOLANTY ALVIN B. GOLDSTEIN * SHIRLEY GREENSPAN * CHARLES GROSBERG	ZELDA GROSS JILL GURWIN * LIPPEN HALPERT HARRY HARELIK * MARY G. HARRIS ROWLAND HARRIS HARRY R HOCHMAN CELIA HOMBURGER * GERTRUDE MILLER HONIGMAN * RUTH WAINGER HURWITZ DOUGLAS JAYE * MICHAEL M. KABCENELL * DONALD I. KAPETANSKY	* NATHAN N. KAPLAN EVERETT JOSEPH KATZ IRA KAUFMAN NORMAN KAUFMAN * MAX B. KERNER * MORRIS W. KOLLIN MARCIA KUSHNER DELPHINE LANDAU RUTH LEHMAN * EVE LEWIS * MAX LIEBERMAN NADINE LIPTON * FRANCES MALIN PAUL E. SCHARG	* PHILIP R. MARCUSE MINERVA MICHALS ZALMAN MULLER * SARAH NEDERLANDER * SETTA B. ROBINSON * ANN H. ROSENBAUM SLOAN ROSENZWEIG ANN Z. ROSS GERALD ROWIN HELEN ROWIN * WILLIAM RUBIN BIRDIE SANDELMAN * BETTY F. SAPERSTEIN PAUL E. SCHARG	* MICHAEL SCHUMAN * DR. DAVID J. SCHWARTZ IRVING SELIGMAN * MARIE FREUD SIEGEL ABRAHAM SINGER * MIGNON G. SOTT SYDNEY SPERBER RAE R. STAMLER MILTON STEARN SAMUEL TELL SCOT THOUSAND * SELMA WAGENHEIM * SIDNEY WALLACE LEON WEBERMAN	BARBARA WEINBERG * CAMILLA WEISS * LAWRENCE WEISS * WILLIAM WETSMAN SAMUEL P. WILKUS * CONSTANCE WINEMAN * CHARLES S. WOLPIN LEO ZISHOLZ
--------------------------------------------------------------------------------------------------------------------------------------------------------------------------------------------------------------------------------------------------------------------------------	----------------------------------------------------------------------------------------------------------------------------------------------------------------------------------------------------------------------------------------------------------------------------	----------------------------------------------------------------------------------------------------------------------------------------------------------------------------------------------------------------------------------------------------------------------------	-----------------------------------------------------------------------------------------------------------------------------------------------------------------------------------------------------------------------------------------------------------------	---------------------------------------------------------------------------------------------------------------------------------------------------------------------------------------------------------------------------------------------------------------------------------	------------------------------------------------------------------------------------------------------------------------------------------------------------------------------------------------------------------------------------------------------------------------------	---------------------------------------------------------------------------------------------------------------------------------------------------------------

SUNDAY, DECEMBER 24 - SATURDAY, DECEMBER 30

ANNA ABRAMS GURSTON SIDNEY ALLEN * JAY B. ALVIN * ROBERT SIEGEL AMBERG * SARAH F. ANTICK * FRANCIS KOMER BABBIN PEARLE BASKIN * MARY BEARMAN * SAMUEL BIENENFELD PHILIP BOLTON * GUS BRAFF DAVID BROCKMAN * HOPE BROPHY * ABRAHAM J. BURKE ETHEL A. CHICOREL	* ALEX COHN * ANNE COHN * JOSEPH COHN * SAMUEL COHN EDITH DEITCH HENRY DESMON SIMON DESMON * DR. WILLIAM L. DEUTSCH MARIE DIZIK * PETER DOBROFSKY BESS DORFMAN * SAUL G. DUNITZ SYLVIA DUNITZ DAVID DWOSKIN * ESTHER ELLER	* MOLLIE ELLIMAN * MARION FEINBERG * MORRY M. FENTON * EDWARD L. FINE * JANET FINE SARAH FOGEL MARIA FOLTYN CLARA FRANK * DR. SIMON FRANK * SARA STONE FREEDMAN LENA GANTZ * BERTHA ALLEN GOLDMAN HERSHEL GOREN * PEARL GRANT * DR. LEO A. GREENBLATT	* WARREN D. GREENSTONE * SAMUEL HERSCH RUTH HILTON DR. MORTON HOCHMAN * MARTHA HYMAN NATHAN KAHN * VERA M. KAHN HENRIETTA KALMOWITZ LOUIS LEBB KAMBER * SIDNEY J. KARBEL TERESA KEIL * MINNIE S. KNOPPER ROBERT KOZLOW JEROME KWARTOWITZ LAWRENCE LEVIN	* HELEN LYNDEY LITMAN ROSE GOLDBERG LONDON NEIL LULLOVE ALFRED MAZOR * DR. HERBERT M. METZ * MOSES MORRIS * SOPHIA NASH * ANGELA N. NEFOUSE STUART M. NELSON * MORRIS PLISNER * ANNA S. PRENTIS JOSEPH ROBERT * CHARLES F. ROSEN * ALYCE MICHELSON ROSENBLATT	MONROE ROSENFELD * EVA SALOMON ALEXANDER SCHONBERG FIVAL SCHRAGER FRIDA SCHRAGER * JULES R. SCHUBOT * HARRY ABRAHAM SCHWARTZ BERTRAM M. SHAPERO EVELYN SHAPERO CAROLE SHAYA ROSE SILVER ROBERT A. SLOMAN SABINA SMITH WILLY SMITH	EDGAR SOMMERFIELD * ESTELLE SPERLING CAROLE STEARN * EMIL T. STERN * HUGO H. STERN * LEO STERN, JR. * JOSEPH STRAUSS CHARLES THAV MEYER WATNICK MORRIS WIDENBAUM * DR. SAM S. WILLIS STUART WINKELMAN MAURICE WISEMAN JANE WOLMAN * SUSMAN WYMAN
--------------------------------------------------------------------------------------------------------------------------------------------------------------------------------------------------------------------------------------------------------------------------------------------------------	----------------------------------------------------------------------------------------------------------------------------------------------------------------------------------------------------------------------------------------------------------------------	-------------------------------------------------------------------------------------------------------------------------------------------------------------------------------------------------------------------------------------------------------------------------------------------------	---------------------------------------------------------------------------------------------------------------------------------------------------------------------------------------------------------------------------------------------------------------------------------------------------	---------------------------------------------------------------------------------------------------------------------------------------------------------------------------------------------------------------------------------------------------------------------------------------------------------	-----------------------------------------------------------------------------------------------------------------------------------------------------------------------------------------------------------------------------------------------------------------------------	--------------------------------------------------------------------------------------------------------------------------------------------------------------------------------------------------------------------------------------------------------------------------------------------

SUNDAY, DECEMBER 31 - SATURDAY, JANUARY 6

DORIS ADLER * JOSEPH H. BARNETT ABRAHAM BECKER MAX BEDNARSH * DR. HARRY B. BENNETT * MELVIN BINDER ANNE LEVIN BLAU ROBERT BLEIER IRENE BLUTH FRED H. COHEN WINIFRED COOPER BRODER SEYMOUR CHERNY STANLEY CLAMAGE	* BELLE COHEN * LOUIS B. COLE * BENJAMIN W. COLMAN AVI COOPERMAN * SARA FINLEY COPIN PAULINE P. COSKEY * HERBERT DAVIS * SAM DAVIS MORRIS DIEM * WILFRED B. DONER HERBERT EBNER JULIUS EPSTEIN * LENA C. FEDERMAN * MYRON J. FINK	* BERTHA FISHSTEIN * ISADORE FISHSTEIN * LORRAINE GARD SAM GARRICK WILLY GELLER GERTRUDE GILBERT GOLDYE GINSBURG * GEORGE G. GOLDBERG * ETHEL GITLIN GOODMAN * PAUL M. GORZECK RAYMOND GOTTLIEB CLARA GREEN FRYDA GURWITZ CAROL ISAACSON	* MAIER B. KALLET JOSEPH KAPLAN LEO KAUFMAN NATHAN KAUFMAN HERB KLEIN * HARRY KOMER BARBARA KREINDLER JANE KRUGER * JEANETTE LAZARUS * BESSIE LEACH * HELEN P. LEAVITT BARBARA LEEDS ALICE WOLF LOEWENTRITT MORRIS MALIN	DR. JERRY G. MARGOLIS * ABRAHAM MARGULIES TILLIE S. MAZOR SAMUEL MINTZ HARRY NEDERLANDER * LEON NEWLANDER * BARBARA POLLACK DAVID RAIDER SIMKHA SROL RATNER * LEO REITELMAN * TOBY ROPE * PEARL ROSEN * SAMUEL ROSENTHAL * RITA ROTH	ANNE ROTHSTEIN * DR. MORRIS RUBIN * IDA ROBINSON SARASOHN ROCHELLE PHYLLIS SCHAFFER JUDITH SCHNEIDER BEATRICE SCHOLNICK HARRIETTE J. SCHWARTZ * PAUL SHAPIRO * ESTHER SHOICHET RUTH SITRON RALPH SOVERINSKY * EVA GORDON SPRINGER DR. EMORY STEIN	ROSELEE STOLER * MAYME STONE * LOUIS TABASHNIK MILFORD TAKSER * JERRY TOBIAS * LEON S. WAYBURN * DR. LAWRENCE M. WEINER * VIVIAN WENST * ISADORE WILLIS BERYL WINKELMAN * ABE ZAMEK * JENNIE ANNA ZEESMAN
---------------------------------------------------------------------------------------------------------------------------------------------------------------------------------------------------------------------------------------------------------	--------------------------------------------------------------------------------------------------------------------------------------------------------------------------------------------------------------------------------------------------------------------------	---------------------------------------------------------------------------------------------------------------------------------------------------------------------------------------------------------------------------------------------------------------------------------	-----------------------------------------------------------------------------------------------------------------------------------------------------------------------------------------------------------------------------------------------------------------	-----------------------------------------------------------------------------------------------------------------------------------------------------------------------------------------------------------------------------------------------------------------------------	------------------------------------------------------------------------------------------------------------------------------------------------------------------------------------------------------------------------------------------------------------------------------------------	--------------------------------------------------------------------------------------------------------------------------------------------------------------------------------------------------------------------------------------------

SUNDAY, JANUARY 7 - SATURDAY, JANUARY 13

DR. JUDITH ACKERMAN JOHN HENRY ADLER *BURT G. ARDEN *MAURICE ARONSSON JACOB BAKER MARCIA BAKER *ABRAM BARNETT *ELAINE BICKMAN *ROBERT BINDER *NAOMI BLANKE ANDREW BLAU LAWRENCE M. BLAU NORMAN BLOCK	SELMA BLUM TRACEY BURNSTEIN *MIRIAM CANTOR *ROBERT CHAFETZ *RAE S. COHEN *GERTRUDE H. COVILLE *ELIZABETH CROLL *ANNIE CURSON DANIEL DARNELL, SR. RACHEL DARVICK SARAH WETSMAN DAVIDSON *MOLLIE DICKSTEIN PHILIP DORF	JOSEPH DRESNER *EARLE ENGLANDER *LOIS ETTINGER BEN FEALK CHARLOTTE BETH FELDMAN *RUTH FELDSTEIN *STELLA S. FENTON MARVIN GARRICK YALE GINSBURG SELMA GOLDSTEIN TILLIE HAMELSTEIN *LAYETTA B. ISENBERG *MOLLY KATCHER	*JESSIE KAUFMAN THELMA KERWIN ROSALIND KRASNEY DOROTHY KRASNOW PHIL KRASNOW *ALFRED AARON KUSCHINSKI *HAROLD LAWSON BESSIE LEE PAULINE LEVY *MARIAN F. LIPPMAN RUTH G. LOEB *SELDON H. LOVE *TILLIE LOWY	*CAROL JANE MALIN CELIA MARGOLIS JOSHUA MARKS J. SIMPSON MARX HARRY C. METZGER *JOSEPH MILLER LAWRENCE A. MILLER *CHARLES H. NEVINS ROSE PARKER BEN PAZNER BEVERLY REMER FREDA BERTHA REMER *ESTELLE ROBINSON	BRINNIE RUBIN *PAULINE Z. SANDLER *MAURICE L. SCHATZ EMANUEL SCHEY *MOONEY SCHREIBER *CHARLES N. SHERMAN SYBIL SLOAN *SYLVIA SLOAN JOSEPH STEIN *FRANCES STERN *ISADORE STRICHARTZ RUTH TISCHLER JOSEPH UNGER	HILDA VINOCUR LEE WALDBOTT *EVE ERUSALL WALLACE STEVEN WEISS *JOSEPH M. WEISS HARRY WEITZMAN NEIL WERNER *MOSES WOHLGEMUTH SAMUEL WOLK *BARNEY YANOVER AARON ZAMEK *PAUL ZUCKERMAN
------------------------------------------------------------------------------------------------------------------------------------------------------------------------------------------------------------------------------------------	----------------------------------------------------------------------------------------------------------------------------------------------------------------------------------------------------------------------------------------------------------	----------------------------------------------------------------------------------------------------------------------------------------------------------------------------------------------------------------------------------------------------------	----------------------------------------------------------------------------------------------------------------------------------------------------------------------------------------------------------------------------------------------	---------------------------------------------------------------------------------------------------------------------------------------------------------------------------------------------------------------------------------------------------	---------------------------------------------------------------------------------------------------------------------------------------------------------------------------------------------------------------------------------------------------	---------------------------------------------------------------------------------------------------------------------------------------------------------------------------------------------------------------------

SATURDAY, JANUARY 14 - SUNDAY, JANUARY 20

*RUTH ACKERMAN DELORES ARSENAULT BEVERLY SILVER BECKERMAN *AMY R. BERGER *NATHAN BLUMROSEN LAURENCE BRESLOW *RICHARD COHN ALBERT S. COWAN MOLLIE CRAINE *LEWIS DANIELS *HERMAN DICKSTEIN *KATHIE E. DIZIK	ALICE EGRIN *WILLIAM M. ELLMANN MOLLIE FELDSTEIN MARJORIE "BOOTS" FENTON REBECCA FREEDMAN ALBERT A. GALINSKY IRWIN L. GLASSER ROBERT GOLDEN *HILDA GOTTLEIB *ANNA GOYER MIRIAM BLAU GREEN *ANITA GLORIA GRUEN MARTIN GURWIN	LOUIS HAAS *HORACE JULIUS HABER MARK HELLER *LAWRENCE HERMAN *HAROLD ISSER *DR. HERBERT I. KALLET DAVID KAMINS MAX KAZDAN AGATHA KLEIN *JACOB W. KLEINSMITH DANIEL KNOPPER NORMAN KOHLENBERG BEN KOLIN	RICHARD KRASNOW ROBERT LAVENE ANNA LAZAR *MAX LEIDER *JULIAN LEVINE *MARY LEVITT *ISADORE LIPPMAN HARVEY LIPSITZ *ELEANOR LOEWENSTEIN WENDY BETH MANN *WILLIAM MASS *RUTH C. MEYER ROBERTA KATSKEE MINKOFF	*CLARA MORAY STUART KENNET NEUMANN ANNA HEKSCH OPERMAN *MAURY PLATT NATHAN POTASH HARVEY RATTNER JASON HOWARD REMER ELLEN KATHY RICE *ALICE I. ROGOVY *ROBERT L. ROSEN *JERALD ALAN ROSENFELD MICHAEL ROSENTHAL DAVID ROSNER	KARLENE SALON *DAVID C. SALZENSTEIN NATHAN H. SCHOLNICK *ROSE SELIGMAN SARAH SLOAN *MARY N. SIEGEL *DOROTHY B. SILVERMAN WALTER M. STARK GERALD STEINBERG ALICIA JOY TECHNER SEYMOUR WILLIAM VICTOR MALCA WECHSLER *MAX WEINGARDEN	*HARRY WEISENTHAL *PEARL BRESKY WILK RUTH WISHNOW *ROSE WYMAN HAROLD YOLICK *JOAN B. ZITOMER *NONIE JOAN ZITOMER
-----------------------------------------------------------------------------------------------------------------------------------------------------------------------------------------------------------------------------------------------	-----------------------------------------------------------------------------------------------------------------------------------------------------------------------------------------------------------------------------------------------------------------	--------------------------------------------------------------------------------------------------------------------------------------------------------------------------------------------------------------------------------------------	------------------------------------------------------------------------------------------------------------------------------------------------------------------------------------------------------------------------------------------------	------------------------------------------------------------------------------------------------------------------------------------------------------------------------------------------------------------------------------------------------------------------	------------------------------------------------------------------------------------------------------------------------------------------------------------------------------------------------------------------------------------------------------------------------	------------------------------------------------------------------------------------------------------------------------------------

SATURDAY, JANUARY 21 - SUNDAY, JANUARY 27

*JOHNNY ALEXANDER *KITTIE ALEXANDER *MAMIE LUMBERG ALLEN *MINA ELIZABETH BARGMAN *HARRY BARNETT *GORDON BEAUMONT SAM BERG *MARTIN M. BLANCK DORIS BORAK LILLIAN BRUDNEY DORA CASHOAN CAMDEN *HERMAN E. COHEN MARY COHEN *MIRIAM WAGMAN COHEN MARILYNN SCHMIER	COLLINS *SOL COPIN *DR. LEO JOHN CROLL *MARVIN DANTO NEWTON EINSTANDIG HELEN BERMAN EISENMAN *JACOB MAX ELLIMAN *BEATRICE FECHHEIMER MARY FELDMAN *AVERY FISHER *MYER H. FRANK IDA FULLER RAYMOND GENDELMAN *JOSEPH GINSBURG *MIGNON BING GINSBURG	HARRY R. GLASSMAN IRA GOLDBERG BENJAMIN H. GOLDSTEIN *DORIS GROSBERG MARVIN GROSS SAMUEL HALPERN *EMANUEL J. HARRIS *GERTRUDE HERSCHBERG *JACK HERTSBERG *CARRIE MOERS ISAACS JEANNE JACOBSON *IVOR J. KAHN LILLIAN KELMENSEN RUTH KEPES BLANCHE KLAR	*ISAAC KLEINSMITH *BERNARD M. KOMER *FLORINE KOROTKIN *MARCIA SANDLER KURZMAN SHARON GAIL LEICHTMAN *HARRY B. LICHTERMAN *HYMAN LIPMAN *SADIE R. LIPMAN DR. SIEGFRIED LOEWENTRITT DR. DENA MCFADDEN *JENNIE ASCHER MEYERSOHN *DR. ARTHUR MILLER JOACHIM NACHBAR	IRA OBERMAN REVA PAZNER ROSALIE RAIMI ARLENE REDFIELD MARY CATHERINE REDMOND *HERBERT RESSLER ESTHER RITS *GEORGE M. ROBERTS LORRAINE KAY ROSS M. HENRY ROSS HENRY RUDORF LEONARD RYBAK *MAURICE M. SAFIR *NATE S. SHAPERO	AMY SHERMAN *ESTA SIEGAL JOSEPH SIMON *RUTH HAASE SIPORIN WILLIAM SLAPIN SHERWOOD SLOAN EDWARD STONE *ESTHER W. STRICHARTZ DAVID TABASHNIK FREDA VERNOFF WIL VIVIANO *RACHEL WAGENHEIM DR. BURTON WAISBREN *HARRY H. WEINBAUM *DR. BENJAMIN D. WELLING	*MATTHEW WESCHLER *ESTHER WETSTEIN CLIFF WILLIAMS *GERTRUDE LOVE WILLIS *CAROLYN SUE WISE *HARRY WITUS *BARNEY J. WYMAN HERBERT ZIMMERMAN MEYER ZUPNITSKE
---------------------------------------------------------------------------------------------------------------------------------------------------------------------------------------------------------------------------------------------------------------------------------------------------------	----------------------------------------------------------------------------------------------------------------------------------------------------------------------------------------------------------------------------------------------------------------------------------------------	-------------------------------------------------------------------------------------------------------------------------------------------------------------------------------------------------------------------------------------------------------------------------------------------------	-----------------------------------------------------------------------------------------------------------------------------------------------------------------------------------------------------------------------------------------------------------------------------------------------------------	----------------------------------------------------------------------------------------------------------------------------------------------------------------------------------------------------------------------------------------------------------------------	--------------------------------------------------------------------------------------------------------------------------------------------------------------------------------------------------------------------------------------------------------------------------------------------------	-----------------------------------------------------------------------------------------------------------------------------------------------------------------------------------

SATURDAY, JANUARY 28 - SUNDAY, FEBRUARY 3

ANNIE ABRAMS *JOSEPH ALEXANDER BERNICE ALLEN BRIAN APPLEBAUM ARNOLD ARONOFF SAUL J. BECHEK *HARRY BERGER SHERWIN BIRNKRAFT *NATHAN BLATNIKOFF *ADA VICTOR BROWN *JEANETTE Y. BROWN	*MINNIE N. CASSEL DIANE CHASNICK MAXWELL CHRISTIE ARNOLD COHEN SOPHIE COHEN SIDNEY COHN LOUIS DORB ARTHUR A. ELKIN HENRIETTA FEALK MORRIS FINK *ALBERT A. FOREMAN	*JACOB S. FREEMAN RICHARD FYNKE *SEYMOUR J. GILMORE *JACOB GOLDFINE *DAVE GOODFRIEND *RABBI JOSEPH GUTTMAN LOUIS J. HARRIS *DR. MYRON HAUSER IRENE JACOB *MARK JACOBSON *GEORGE KAMENOW	*GEORGE KLEINMAN *HYMAN KOPPELMAN HENRY KROLIK *MARTIN GRANET LENHOFF LOIS ZAMLER LESSER *SAMUEL J. LEVE *ALBERT Y. LINKNER *HARRY L. LIPPMAN EVELYN LONDON ANNE MARX *MAX L. MICHELSON	ROBERT B. MILLER *JACOB B. NEIMAN *BELLE GOODMAN NELSON GORDON G. NYQUIST *CLARA PELAVIN DR. IRWIN PHILLIPS EDNA PRINCE SAMUEL RAAB *SHELDON MARTI RAMINICK *MARGARET B. REISMAN RITA REISS	*SOPHIE BLUMROSEN ROSENTHAL *MANUEL L. ROTENBERG IDA RUBINSTEIN *JOSEPH M. SAPERSTEIN *GERTRUDE SCHATZ *SADIE SLOMAN ARTHUR SOLOMON YANKEL VOSPE *CYRIL WAGNER ADELE WALDMAN	*JOSEPH WEIL CLARA WEINGARDEN GEORGE WEINGARDEN *GERTUDE WINEMAN *ROSALIND H. WINKELMAN *JOSEPH WINSLOW DR. LOUIS ZLATKIN NORBERT ZUCKERMAN
------------------------------------------------------------------------------------------------------------------------------------------------------------------------------------------------------------------	-------------------------------------------------------------------------------------------------------------------------------------------------------------------------------------------------	-----------------------------------------------------------------------------------------------------------------------------------------------------------------------------------------------------------------------	-----------------------------------------------------------------------------------------------------------------------------------------------------------------------------------------------------------------------	---------------------------------------------------------------------------------------------------------------------------------------------------------------------------------------------------------------------------	------------------------------------------------------------------------------------------------------------------------------------------------------------------------------------------------------------	------------------------------------------------------------------------------------------------------------------------------------------------------------------

WE NOTE WITH SORROW THE PASSING OF...

MARK E. KLINGER. Husband of Frances Klinger, Father of Gary (Carolyn) Klinger, Michael (Sheryl) Klinger, and Andrea (Mitch) Reid, Grandfather of Annie Klinger, Ari Klinger, Allison Reid, Ian Reid, and Genna Reid. Brother of Susan (Edward) Radner. Brother-in-law of Nathan Fine.

PHOEBE GOODMAN. Wife of Merrill Goodman. Mother of Roy Goodman z"l (Judith Schartenberg Goodman) and Nancy Goodman (Peter) Torpey. Grandmother of Lauren Goodman (Jaron Goldberg), Julian (Lindsay) Goodman, Allison

Torpey and Brian (Jessica) Torpey. Great-Grandchildren: Megan Goldberg, Jonah Goodman, Tessa Goodman, Brayden Torpey and Bryce Torpey. Sister of Victor (Carole) Blank.

BARBARA KROHN. Wife of Larry Krohn. Mother of David Ettlinger and Jillian (Aaron) Pearlman. Grandmother of Finley Pearlman. Sister of Michael (Carol) Salzenstein. Sister-in-law of Clair Kretchmer, Lita Krohn and Stewart Krohn. Aunt of Douglas (Gina) Salzenstein, Adam Krohn and Aaron (Dalila) Krohn. Great-aunt of Madison, Leah & Noah

Salzenstein, Sabrina & Sebastian Krohn. Daughter-in-law of Marilyn Krohn.

WILLIAM "VAL" RESNICK. Father of Nelson (Robin) Resnick, Ronald (Cinda) Resnick, Howard (Shari) Resnick, Cindy (Bruce Gaston) Gudenau, Lori (Van) Conway. Father-in-law of Deborah Guss. Grandfather of Carly Conway, Kendall Conway, Alexandra Gudenau, Matthew Gudenau, Michele (Ron) Nunnally, Erica (Didier) Fonck, Adam Resnick, Michael Resnick, Tracy Resnick, Mark Meadus, Kevin Meadus, Julianne Resnick,

and Brandon Resnick. Brother of Albert (Sue) Resnick and Mary (Burton) Schwartz. Sister-in-law of Ava Resnick.

DEBORAH LEVINE. Mother of Meredith (Nathaniel Grossman) Levine and Joshua (Janet) Levine. Sister of James (Cathy) Deutchman, Charles (Sharon) Deutchman and William (Judy) Deutchman. Grandmother of Eleanor and Tyson. Sister-in-law of Judi (Jay) Roseman.

DORIS LEWIS. Mother of Doug Lewis and Dorothy Lewis. Grandmother of Aaron (Erin)

Lewis and Tim Lewis. Great-grandmother of Eve and Roen Lewis.

SOLOMON MARGOLIS. Husband of Barbara Margolis. Father of Sheryl (Dr. David) Stoddard, Nancy (Peter) Winagar, Marcie (Paul) Strasberger. Grandfather of Steven, Mallory and Heather Stoddard, Michael (Amanda) Winagar, Rachel Winagar, Hilary Strasberger. Brother of Esther "Molly" Margolis-Fisher and Dr. Harold (Rhodie) Margolis. Great-grandfather of Benjamin Winagar.
As of November 4, 2017



GIVE. SHARE. GROW.

Your participation is critical in helping us continue building a synagogue that makes a difference in our lives.

We hope you will join us with a gift to the Annual Appeal, so that we can meet our shared obligation to educate our children; offer learning, social, and volunteer opportunities; sustain our magnificent building; and continue to do good work throughout the community.

Our Temple has been hard at work providing a broad range of events and opportunities throughout the year for members of all ages. Along with all the excitement, it is important for us to remember that membership dues provide only one-third of the funds necessary to operate our beautiful Beth El. It is vital for all of us to support our Temple financially, so that we can continue to build and grow – offering you all that you want and need from your spiritual home.

Making your contribution is easy: you should have received your Annual Appeal letter and pledge card in the mail. Simply complete your pledge card and send it back in the return envelope. Alternatively, you may set up an automatic monthly ACH payment by contacting our Chief Financial Officer, Claire Danaher, at cdanaher@tbeonline.org or 248.851.1100.

If you have any questions, feel free to contact our Executive Director, Kim Raznik, at kraznik@tbeonline.org or 248.851.1100.

RAYMOND & SHIRLEY ABRAMS YOUTH GROUP RECREATION FUND

IN MEMORY OF

DENNIS ARTHUR
JACK ADELMAN

Wendy & Henry Abrams & Family

RABBI BRUDNEY DISCRETIONARY FUND

IN HONOR OF

RABBI MEGAN BRUDNEY

Sandy & Lee Marks, Melissa & Win Schiller & Family

IN APPRECIATION FOR PRAYERS FOR

MARIKAY RUDORF DAVIS AND
BENJAMIN DAVIS

Christa & Michael Dash & Family

RABBI BRUDNEY RABBINIC EXPENSE FUND

IN HONOR OF

MARRIAGE OF AJ ROBERTS TO
RYAN MCGINNIS

Phyllis Loewenstein & Sheldon Plotnik

DONALD CANVASSER MEMORIAL FUND

IN HONOR OF

BELATED SPECIAL BIRTHDAY OF
CHARLES GREENBERG

RETIREMENT OF STEPHEN BOODIN

SPECIAL BIRTHDAY OF SUE BENEZRA

SPECIAL BIRTHDAY OF MARC BENEZRA
Sandra & Thomas Millman

CARING COMMITTEE FUND

IN HONOR OF

BAT MITZVAH OF CAROL SCHWARTZ
Deborah Morosohk

DEUTCHMAN FAMILY FUND

IN MEMORY OF

DEBORAH LEVINE

Harriet & Mark Cooperman, Linda Deutsch & Dennis Deutsch, Phyllis Loewenstein & Sheldon Plotnik, Robin & Michael Fenberg

IN HONOR OF

BIRTH OF SIDNEY JOLIE GORDON
Harriet & Mark Cooperman

THE DIZIK FAMILY MEMORIAL FUND

A CONTRIBUTION

EDUCATIONAL AND LECTURE FUND

IN HONOR OF

BIRTHDAY OF MARVIN SALOMON

Hilary Mellin & Joel Gershenson

IN HONOR OF

SPEEDY RECOVERY OF PHYLLIS SALOMON

Hilary Mellin & Joel Gershenson

RUTH FRANKLIN EINSTEIN EDUCATION ASSISTANCE FUND

IN MEMORY OF

SARAH SALLY KOTT

Ann & David Conrad

IN HONOR OF

ADULT BAT MITZVAH OF

CAROL SCHWARTZ

Jackie & Earl Remer, Sandy & Lee Marks,

Peggy & Dennis Frank

PEGGY M. & DENNIS N. FRANK SOCIAL SERVICE FUND

IN HONOR OF

60TH ANNIVERSARY OF

MARGO & JERRY KLINE

Peggy & Dennis Frank

RABBI LEO M. FRANKLIN ARCHIVES FUND

IN MEMORY OF

JEANNETTE MACWILLIAMS

JULIA RING

Suzi MacWilliams

IN HONOR OF

BAR MITZVAH OF MORI MILLER

Lucille Miller, Ruth & Gil Plotnik

BIRTH OF AKSEL PERRY

Barbara Grant

BIRTH OF MY GRANDSON,

AKSEL BRUCE PERRY

Suzi MacWilliams

DAVID C. FREDRICK HOLOCAUST REMEMBRANCE FUND

IN HONOR OF

70TH ANNIVERSARY OF

RITA & SIMON ROZENCWEIG

Jackie & Earl Remer

FRIENDS OF THE PRENTIS LIBRARY FUND

IN MEMORY OF

DEAR WIFE, SHIRLEY STEINBERG

Maj. Irving Steinberg

IN HONOR OF

90TH BIRTHDAY OF CHUCK ZAMEK

Carole & Martin Schock

98TH BIRTHDAY OF VOLIET GREENBERG

Karen, Alan & Marissa Lowen

BAR MITZVAH OF MORI MILLER

Patti & Rick Phillips

BAT MITZVAH OF CAROL SCHWARTZ

Carole & Martin Schock, Denny Brown

RECENT MARRIAGES OF THE SONS OF

JOYCE AND STEVEN MILLER

Denny Brown

GENERAL OPERATING FUND

IN MEMORY OF

DEBORAH LEVINE

SOLOMON MARGOLIS

Marion and Michael Freedman

DEAR WIFE, SHIRLEY RUTH STEINBERG

Maj. Irving Steinberg

ERWIN SIMON

Marjorie Hecht Simon

GEOFFREY EATON

Brenda & Sandy Passer

HOPE STEINBERG

MILTON LICHTERMAN

Ellen Lichterman

JON SCHNEIDER

Jill & Michael Leib

PAUL SILVERSTEIN

Jodi Weiss

ROSE STEINHARDT

Marjorie Hecht Simon

SAMANTHA KAY GOODMAN

Morgan Goodman

SARAH SALLY KOTT

Miriam & Kal Goren

IN HONOR OF

MARC ZUPMORE AND FAMILY

Lauri & Robert Briskin

65TH ANNIVERSARY OF

BETTY & IRVING BARON

James Allen Jones & Gar Sims-Jones

80TH BIRTHDAY OF MARVIN SALOMON

Wendy & Lenny Newman

BAR MITZVAH OF

SAMUEL HAYDEN GOODMAN

Sheila & David Lipschutz

BAT MITZVAH OF CAROL SCHWARTZ

Brooke & Paul Wolf

BAT MITZVAH OF THE GRANDDAUGHTER
OF JOAN & NED WINKELMAN

Margi & Don Epstein

SPECIAL BIRTHDAY OF

AMY TURNER BERKE

Margi & Don Epstein

MAINTENANCE STAFF OF

TEMPLE BETH EL

Cathy and Mark Segel

A CONTRIBUTION

Heather Bacon-Shone

MOLLIE & BEN GLASIER LIBRARY FUND

IN MEMORY OF

JAMES ROSE

Cindy Anderson

PAUL & SONIA HANDLEMAN MEMORIAL FUND

IN HONOR OF

L. STEVEN WEINER

Rose & David Handleman

RABBI RICHARD C. & RENDA HERTZ GIFT OF LIFE FUND

IN MEMORY OF

JANET MANN

Mrs. Ellin Lawson & Family

JEFFREY EATON

Shelly & Peter Cooper

ROBERT WELLING

Shelly Cooper, Lois R. Weintraub

IN HONOR OF

BAR MITZVAH OF MORI MILLER

Eleanor Blum

HIGH HOLY DAYS DONATIONS

IN HONOR OF

BEAUTIFUL HIGH HOLIDAY SEASON

Marilyn Racklin

HOWARD & CELIA JACOBSON MEMORIAL FUND FOR THE BETH ELDERS OF TEMPLE BETH EL

IN MEMORY OF

EVELYN BERGMAN

Abby & Don Goldbaum

MURRAY A. LOUIS

Elaine & E. David Brockman

JEWISH WAR VETERANS IN SUPPORT OF LIBRARY

A CONTRIBUTION

Jewish War Veterans

CANTOR RACHEL GOTTLIEB KALMOWITZ DISCRETIONARY FUND

IN HONOR OF

CANTOR RACHEL GOTTLIEB KALMOWITZ
Sandy & Lee Marks
CANTOR RACHEL GOTTLIEB KALMOWITZ
FOR ALL YOUR SUPPORT
Melissa & Win Schiller & Family
70TH ANNIVERSARY OF
RITA & SIMON ROZENCWEIG
James Allen Jones & Gar Sims-Jones

CANTOR RACHEL GOTTLIEB KALMOWITZ MUSIC FUND

IN HONOR OF

BIRTHDAY OF AMY BERKE
BIRTHDAY OF LYNN JACOB
Sharron & Alfie Kreindler
SPEEDY RECOVERY OF JIM MARKS
Carole & Martin Schock

ELLIN & HAROLD LAWSON YOUTH INSTITUTE FUND

IN HONOR OF

BAR MITZVAH OF MORI MILLER
Phyllis Kaplan, Jackie & Earl Remer

DAVID & JEANETTE LEACH COLLEGE SCHOLARSHIP FUND

IN MEMORY OF

BARBARA NEMER
BLANCHE SHAWN
GEOFFREY EATON
IRWIN GOREN
Dr. George Leach and Mr. James Hall

IN HONOR OF

70TH BIRTHDAY OF STEVEN EPSTEIN
90TH BIRTHDAY OF KENNETH LENCHNER
Dr. George Leach and Mr. James Hall

MARSHALL & PHYLLIS LOEWENSTEIN FAMILY CAMPSHIP FUND

IN HONOR OF

BAR MITZVAH OF MORI MILLER
Phyllis Loewenstein & Sheldon Plotnik
BAT MITZVAH OF OUR SPECIAL FRIEND,
CAROL SCHWARTZ
Phyllis Loewenstein & Sheldon Plotnik

ISADORE & FRANCES MALIN INTERFAITH ACTIVITIES FUND

IN MEMORY OF

FRANCES R. MALIN
JACOB DAVID HARTMAN

PHILIP M. SCHONBERGER

Elaine & Mark Schonberger & Family

IN HONOR OF

BAT MITZVAH OF DR. CAROL SCHWARTZ
Elaine & Mark Schonberger & Family

RABBI MILLER DISCRETIONARY FUND

IN MEMORY OF

MATILDA MATTIE FREDRICK
Janelle McCammon & Raymond Rosenfeld
ROBERT SOVEL
Rochelle Anixt and Robert S. Gold

IN HONOR OF

RABBI MARK MILLER
*Sandy & Lee Marks, Melissa &
Win Schiller & Family*

RABBI MILLER'S FASCINATING
CLASS ON JUDAISM

*Rev. Dr. Peter Henry Grosse Pte
Memorial Church*

BAR MITZVAH OF MORI MILLER
*Joan & Robert Jampel, Nancy & Brian
Kott, Carole & Martin Schock, Elaine &
Mark Schonberger & Family, Cathy & Mark
Segel, Ellen & Les Siegel, Amy Silardi, Carol
& Steve Tarnowsky, Lois R. Weintraub,
Women of TBE, Marie Curtis, Mary & Larry
Epstein, Audrey Zupmore, Denny Brown,
Elaine & E. David Brockman, Peggy &
Dennis Frank, Judith Goodman,
James Marks & Susan Green*

BAT MITZVAH OF CAROL SCHWARTZ
*Janelle McCammon & Raymond Rosenfeld,
Frances & George Stern*

BAT MITZVAH OF HELEN SORSER
Janelle McCammon & Raymond Rosenfeld
SPECIAL BIRTHDAY OF MICHAEL GORAN

Fran & Michael Goran

IN APPRECIATION FOR PRAYERS
FOR MARIKAY RUDORF DAVIS AND
BENJAMIN DAVIS

Christa & Michael Dash & Family

HARRY & SALLY NOSANCHUK CARING COMMUNITY FUND

IN MEMORY OF

BEVERLY LAKER
DR. RONALD TRUNSKY
IRVING TOBOCMAN
PHILLIP W. BALSAM
Harry Nosanchuk
JACK ADELMAN
JACQUELIN ECKHOUS
JEFF STULBERG
JOSHUA MAX KENT
BEVERLY LAKER
Linda, Scott, Eric and Hilary Sircus

MILTON ROTENBERG

RACHEL SKOROPA

*Harry Nosanchuk, Linda, Scott, Eric and
Hilary Sircus*

IN HONOR OF

85TH BIRTHDAY OF HARRY NOSANCHUK
*Julie & Larry August & Family, Lois & Mark
Shaevsky, Jennifer & Paul Silverman,
Elayne Greenspan, Shirley & Bernie
Malamud, Rosalie & Bruce Rosen, Beth &
Steve Margolin*

60TH ANNIVERSARY OF

CAROL & SIDNEY LIFTON
ANNIVERSARY OF

BERNICE & KEN TILLMAN

ANNIVERSARY OF

MARGIE & BILL OBERFELDER

ANNIVERSARY OF

PHYLLIS & SID FREEDLAND

ANNIVERSARY OF RHEA & ROBERT BRODY

BIRTHDAY OF BERNICE TILLMAN

BIRTHDAY OF BILL OBERFELDER

BIRTHDAY OF ELYSE SCHOSTAK

BIRTHDAY OF LARRY COHEN

BIRTHDAY OF LINDA SIRCUS

BIRTHDAY OF LOIS SHAEVSKY

BIRTHDAY OF SYDELL SCHUBOT

RECOVERY OF IRVING NUSBAUM

SPEEDY RECOVERY OF EILEEN SALK

SPEEDY RECOVERY OF GAYLE FLOYD

SPEEDY RECOVERY OF

PHYLLIS FREEDLAND

Harry Nosanchuk

BAT MITZVAH OF CAROL SCHWARTZ

Nancy & William Edmunds

A CONTRIBUTION

Harry Nosanchuk

ONEG/KIDDUSH FUND

IN HONOR OF

70TH ANNIVERSARY OF
RITA & SIMON ROZENCWEIG
Eileen Millstone

MEYER & ANNA PRENTIS RELIGIOUS SCHOOL FUND IN MEMORY OF JIMMY MORRIS & WALLY STRAUS

IN MEMORY OF

MARIANNE SHAPERO SCHWARTZ
Women of Temple Beth El

LOIS & MARK SHAEVSKY FOOD ALLERGY AWARENESS FUND

IN HONOR OF

CENTENNIAL BIRTHDAY OF
LOIS COHODAS
Tom, Marlo, Benny and Harry Shaevsky

75TH BIRTHDAY OF AMY BERKE

Lois Shaevisky

BIRTHDAY OF AMY BERKE

Vita Brown, Dana, Drew, and Mia Schultz

SISTERHOOD BRAILLE FUND

IN MEMORY OF

DEBORAH A. LEVINE

HAROLD GENDELMAN

Jackie & Earl Remer

ROBERT SOVEL

Fern Ettinger, Barney Freedman, Marilyn & Ronald Goldstone, Carol Gordon, Barbara Grant, Judy Isaacs, Selma Ladenheim, Sandy & Lee Marks, Sharon & John Mertz, Jacqueline DeYoung & Michael Kasky, Ruth Moss, Laveda Powers, Jackie & Earl Remer, Beverly Sabbath, Audrey & Herb Saperstein, Sharon Edelman & Jeffrey Scissors, Helen Shapiro, Sandra Shepherd, Steve Shepherd, Frances & George Stern, Mary Stevick, Elaine & Bob Tell, Kathleen Voyles, Lynda Warren, Lenore Weiss, Barbara Wojcik, Chuck Zamek, Michelle & Joe Furline, Debbie & Tom Steiman-Cameron & Family, Aron & Georgia Steiman & Family, Peggy & Dennis Frank, Cheryl & Gary Brand

IN HONOR OF

EARL REMER FOR LEADING THE SHIVA SERVICE FOR ROBERT SOVEL

Susan Sovel & Family

65TH ANNIVERSARY OF

BETTY & IRV BARON

Sandy & Lee Marks

BAR MITZVAH OF

MORI BEN-TZION MILLER

Sandy & Lee Marks

A CONTRIBUTION

Sandy & Lee Marks

RABBI DANIEL SYME DISCRETIONARY FUND

IN MEMORY OF

AL COLEMAN

Dr. & Mrs. Joseph J. Berke

HANDSOME HANK

Dr. Joe & Amy Berke

IN HONOR OF

BAT MITZVAH OF CAROL SCHWARTZ

Harriet Rotter

TBE SENIOR STAFF MITZVAH FUND

IN HONOR OF

BAR MITZVAH OF MORI MILLER

Barbara Mayer

TEMPLE BETH EL MITZVAH PROJECTS FUND

IN MEMORY OF

MICHAEL MULLER

Bella & Lev Shleypak

TEMPLE BETH EL YOUTH WING FUND

IN MEMORY OF

ROBERT SOVEL

Sovel's Auto Service

SALLY KOTT

Debi Bernstein-Siegel & Rick Geller

IN HONOR OF

CHARLENE HANDLEMAN

Linda Friedman

BAR MITZVAH OF MORI MILLER

Audrey & Herb Saperstein

MAMIE & JASON TICKTON MUSIC FUND

IN MEMORY OF

MARK KLINGER

Frayda Riger

IN HONOR OF

75TH BIRTHDAY OF STAN TICKTON

Carol Tickton

GIVING OPPORTUNITIES...

Tzedakah (righteous giving) is one of the oldest and most strongly held principles of Judaism. One way to perform *tzedakah* is donating to one of the Temple's various tribute funds to honor or remember a loved one or friend. Others include:

- **Purchasing a Simchah Leaf**
- **Dedicating one of the 18 tribute trees we have planted on Temple grounds**
- **Memorializing a loved one with a Yahrzeit Plaque**
- **Honoring a loved one with a dedicated bench, adorned with an engraved plaque**

For more information on any of these opportunities, please contact TBE Executive Director, Kim Raznik, at kraznik@tbeonline.org or 248.851.1100.

TRIBUTE FORM

4 WAYS TO MAKE TRIBUTES

ONLINE: www.tbeonline.org/tributes

PHONE: Contact Marianne Myers at 248.851.1100

EMAIL: mmyers@tbeonline.org

MAIL: Temple Beth El
7400 Telegraph Road
Bloomfield Hills, MI 48301

CONTRIBUTIONS ARE TAX DEDUCTIBLE

• Credit card transactions will incur a mandatory non-refundable 3% convenience fee.

• No convenience fee for debit card transactions.

PLEASE PLACE MY CONTRIBUTION IN THE FOLLOWING FUND:

In Honor of: -----

In Memory of: -----

Minimum contribution: \$18 per tribute.

Enclosed please find \$ _____
or charge my ☐ Visa ☐ Mastercard ☐ AMEX

exp. date ----- sec. code -----

Name on card

SEND ACKNOWLEDGMENT TO:

Name: -----

Address: -----

City/State/Zip: -----

DONOR'S NAME:

Address: -----

City/State/Zip: -----

Phone: -----

Member ---- Non-member ----

HOW DO YOU WISH THIS TRIBUTE TO BE SIGNED?

DECEMBER 2017

01 FRI	7:00 PM	Music Shabbat
02 SAT	9:00 AM 9:30 AM 10:30 AM	Torah Study Tot Shabbat Shabbat Service
03 SUN	8:30 AM 9:00 AM 9:30 AM	B'nai Mitzvah Club Breakfast Religious School Brotherhood Board Mtg Sunday Minyan
	10:30 AM 11:30 AM NOON	WTBE Board Meeting Youth Choir 3-5 Grade Program
04 MON	6:00 PM	Monday Night School
05 TUE	4:30 PM 7:00 PM	Exec Committee Mtg TBE Choir Rehearsal Religious School Committee Mtg
06 WED	9:30 AM 10:30 AM 4:30 PM 7:00 PM	Torah Study-Lea Beurer Hebrew-Lea Beurer B'nai Mitzvah Club Exploring Middot
07 THU	10:00 AM	Beth Elders Meeting
08 FRI	7:00 PM	Shabbat Service
09 SAT	9:00 AM 10:30 AM 5:00 PM	Torah Study Shabbat Service Bat Mitzvah of Micayla Greenberg BETY Event - OOT
10 SUN	8:30 AM 9:00 AM 9:30 AM	B'nai Mitzvah Club Breakfast Religious School Sunday Minyan Masoret
	10:30 AM 11:30 AM 2:00 PM	Youth Choir Mitzvah Sing - OOT
11 MON	6:00 PM	Monday Night School
12 TUE	HANUKKAH - 1ST NIGHT 7:00 PM	TBE Choir Rehearsal
13 WED	HANUKKAH - 2ND NIGHT 9:30 AM 10:30 AM NOON 4:30 PM 6:00 PM	Torah Study-Lea Beurer Hebrew-Lea Beurer Beth Elders Hanukkah Luncheon B'nai Mitzvah Club ECC Hanukkah Program

14 THU	HANUKKAH - 3RD NIGHT 7:15 PM	Board of Trustees Mtg
15 FRI	HANUKKAH - 4TH NIGHT 6:00 PM	Temple-Wide Hanukkah Service with Youth Choir
16 SAT	HANUKKAH - 5TH NIGHT 9:00 AM 10:30 AM	Torah Study Shabbat Service
17 SUN	HANUKKAH - 6TH NIGHT 8:30 AM 9:00 AM 9:30 AM	B'nai Mitzvah Club Breakfast Religious School Brotherhood Speaker Sunday Minyan
	9:30 AM NOON	Soup Kitchen with BETY
18 MON	HANUKKAH - 7TH NIGHT 6:00 PM	Monday Night School
19 TUE	HANUKKAH - 8TH NIGHT 6:30 PM 7:00 PM	TBE Choir Mitzvah Sing - OOT JARC Bingo
20 WED	9:30 AM 10:30 AM 4:30 PM	Torah Study-Lea Beurer Hebrew-Lea Beurer B'nai Mitzvah Club
22 FRI	7:00 PM	Shabbat Service
23 SAT	9:00 AM 10:30 AM	Torah Study Shabbat Service
24 SUN	WINTER BREAK 9:30 AM	Sunday Minyan
25 MON	WINTER BREAK	Administrative Offices Closed Mitzvah Day - OOT
26 TUE	WINTER BREAK	
29 FRI	WINTER BREAK 7:00 PM	Shabbat Service
30 SAT	WINTER BREAK 9:00 AM 10:30 AM	Torah Study Shabbat Service
31 SUN	WINTER BREAK 9:30 AM	Sunday Minyan

JANUARY 2018

01 MON	NEW YEAR'S DAY Administrative Offices Closed	
03 WED	WINTER BREAK 9:00 AM	ECC Fun Days
04 THU	WINTER BREAK 9:00 AM	ECC Fun Days
05 FRI	WINTER BREAK 9:00 AM 7:00 PM	ECC Fun Days Music Shabbat
06 SAT	WINTER BREAK 9:00 AM 10:30 AM	AM Torah Study Shabbat Service Bar Mitzvah of Douglas Kravchenko
07 SUN	8:30 AM 9:00 AM 9:30 AM	B'nai Mitzvah Club Breakfast Religious School Sunday Minyan
08 MON	6:00 PM 6:30 PM	Monday Night School ECC Policy Mtg
09 TUE	4:30 PM 7:00 PM	Exec Committee Mtg TBE Choir Rehearsal
10 WED	9:30 AM 10:30 AM 4:30 PM 7:00 PM	Torah Study-Lea Beurer Hebrew-Lea Beurer B'nai Mitzvah Club Adult B'nai Mitzvah Adult Conv. Hebrew
12 FRI	Lawson Weekend 7:00 PM	Shabbat Service
13 SAT	Lawson Weekend 9:00 AM 10:30 AM	Torah Study Shabbat Service
14 SUN	Lawson Weekend 8:30 AM 9:00 AM 9:30 AM	B'nai Mitzvah Club Breakfast Religious School Sunday Minyan
	10:30 AM 11:30 AM	WTBE Board Meeting Masoret Youth Choir
15 MON	MARTIN LUTHER KING DAY School & Admin Offices Closed	
16 TUE	7:00 PM	TBE Choir Rehearsal
17 WED	9:30 AM 10:30 AM 4:30 PM 7:00 PM 7:00 PM	Torah Study -Lea Beurer Hebrew-Lea Beurer B'nai Mitzvah Club Adult B'nai Mitzvah Adult Conv. Hebrew Intro to Judaism
18 THU	10:00 AM 7:00 PM 7:30 PM	Bites & Books Bites & Books DSO Concert - OOT
19 FRI	5:00 PM 7:00 PM	4th & 5th Grades Family Program Shabbat in the Round
20 SAT	9:00 AM 10:30 AM	Torah Study Shabbat Service
21 SUN	8:30 AM 9:00 AM 9:30 AM	B'nai Mitzvah Club Breakfast Religious School Brotherhood Speaker Sunday Minyan
	11:30 AM	Youth Choir Rehearsal
22 MON	6:00 PM	Monday Night School
23 TUE	7:00 PM	TBE Choir Rehearsal
24 WED	ECC Half Day 9:30 AM 10:30 AM 1:30 PM 4:30 PM 7:00 PM	Torah Study-Lea Beurer Hebrew-Lea Beurer ECC Conferences B'nai Mitzvah Club Adult B'nai Mitzvah Adult Conv. Hebrew
25 THU	7:15 PM	Board of Trustees Mtg
26 FRI	5:30 PM 7:00 PM	Small Fri Shabbat: Tu Bishvat Party Shabbat Service
27 SAT	9:00 AM 10:30 AM	Torah Study Shabbat Shira Service
28 SUN	8:30 AM 9:00 AM 9:30 AM	B'nai Mitzvah Club Breakfast 1st Grade Program Religious School Sunday Minyan JBETY Program
	NOON	
29 MON	6:00 PM	Monday Night School
31 WED	TU BISHVAT 9:30 AM 10:30 AM 4:30 PM 7:00 PM	Torah Study Hebrew-Lea Beurer B'nai Mitzvah Club Adult B'nai Mitzvah Adult Conv. Hebrew Intro to Judaism

**SOULFUL MUSIC.
THOUGHTFUL PRAYER.
CHALLENGING IDEAS.**



SATURDAY, DECEMBER 9

BAT MITZVAH OF MICAYLA ROSE GREENBERG

Micayla is a 7th grader at Birmingham Covington School where she participates in art, theater, yearbook, Religious Diversity Journeys and is a student Ambassador. She enjoys summer camp, cooking and has a passion for tap dance and photography. Micayla's love of animals is the basis for her Mitzvah Projects. For the past 2 years she has collected hundreds of towels and blankets, made homemade dog treats and toys, and has delivered them to several area rescues. Micayla volunteers at a local animal shelter where she walks the dogs, plays with and feeds the animals, and cleans cages. Additionally, this past summer Micayla spent 2 weeks volunteering at the TBE preschool camp. Micayla is the daughter of Amy Greenberg, Jay & Erica Greenberg, sister of Audra, granddaughter of Gail & Irwin Lorber, Lois & Franklin Greenberg, Janet and the late Norman Woronoff.



SATURDAY, JANUARY 6

BAR MITZVAH OF DOUGLAS ELLIS KRAVCHENKO

Douglas is a 7th grader at East Hills Middle School where he plays the saxophone in the school band. He enjoys reading, video games, and has developed a passion for cyber security. For his Mitzvah project, Douglas is volunteering at Yad Ezra. Douglas is the son of Eric & Bridget Kravchenko, the brother of Louis, and the grandson of Semyon & Bella Kravchenko, and Anthony & Doreen Smith.

**The perfect ending
to any Shabbat service ...
enjoying food with one
another.**

A SPECIAL THANK YOU TO
CAROL SCHWARTZ FOR
SPONSORING THE NOVEMBER 4
KIDDUSH.

Please consider supporting this festive
gathering with a donation to the Oneg/
Kiddush Fund.

To sponsor an Oneg or Kiddush, contact
Marianne Myers at 248.851.1100
or mmyers@tbeonline.org.

A spiritual, uplifting, and
meaningful Shabbat service in
our beautiful Maas Chapel.

**FRIDAY NIGHTS:
7:00 PM**

**SATURDAY MORNINGS:
10:30 AM**

FRIDAY, DECEMBER 1

7:00 PM Music Shabbat

SATURDAY, DECEMBER 2

9:00 AM Torah Study
9:30 AM Tot Shabbat
10:30 AM Shabbat Service
Torah Reader: Debbie Morosohk

FRIDAY, DECEMBER 8

7:00 PM Shabbat Service

SATURDAY, DECEMBER 9

9:00 AM Torah Study
10:30 AM Shabbat Service
BAT MITZVAH OF
MICAYLA GREENBERG

FRIDAY, DECEMBER 15

HANUKKAH - 4TH NIGHT

6:00 PM Temple-Wide
Hanukkah Service with
Youth Choir

SATURDAY, DECEMBER 16

HANUKKAH - 5TH NIGHT

9:00 AM Torah Study
10:30 AM Shabbat Service
Torah Reader: Sue Green

FRIDAY, DECEMBER 22

7:00 PM Shabbat Service

SATURDAY, DECEMBER 23

9:00 AM Torah Study
10:30 AM Shabbat Service
Torah Reader: Jim Marks

FRIDAY, DECEMBER 29

7:00 PM Shabbat Service

SATURDAY, DECEMBER 30

9:00 AM Torah Study
10:30 AM Shabbat Service
Torah Reader: Sara Tatchio

FRIDAY, JANUARY 5

7:00 PM Music Shabbat

SATURDAY, JANUARY 6

9:00 AM AM Torah Study
10:30 AM Shabbat Service
BAR MITZVAH OF
DOUGLAS KRAVCHENKO

FRIDAY, JANUARY 12

7:00 PM Shabbat Service

SATURDAY, JANUARY 13

9:00 AM Torah Study
10:30 AM Shabbat Service
Torah Reader: Ryan Goodman

FRIDAY, JANUARY 19

7:00 PM Shabbat in the Round

SATURDAY, JANUARY 20

9:00 AM Torah Study
10:30 AM Shabbat Service
Torah Reader: Cameron Radin

FRIDAY, JANUARY 26

5:30 PM Small Fri Shabbat
Tu Bishvat Party
7:00 PM Shabbat Service

SATURDAY, JANUARY 27

9:00 AM Torah Study
10:30 AM Shabbat Shira Service
Torah Readers: Rabbi Megan
Brudney and Cantor Rachel Gottlieb
Kalmowitz

CLERGY

Mark Miller, Senior Rabbi
Rachel Gottlieb Kalmowitz, Cantor
Megan Brudney, Assistant Rabbi
Daniel B. Syme, Rabbi Emeritus
John Redfield, Honorary Cantor Emeritus

STAFF

Kim Raznik, Executive Director
Deborah Morosohk, RJE, Director of Education
Claire Danaher, Chief Financial Officer
Susie Weiner, Director of Early Childhood Center
Danielle Gordon, Program Director
Lindsey Fox-Wagner, Communications Director
Rachel Rudman, Director of Member Relations
Joseph Unger, Director of Youth Engagement
Laura Williams, Curator
Alan Lowen, B'nai Mitzvah Coordinator
Jim Gabriel, Accompanist
Jan Durecki, Archivist
Allan N. Friant, Sr., Building Superintendent
Joe Winter, Cemetery Superintendent
Morris Collins, Reception/Security
Thomas Jablonski, Executive Director Emeritus

EXECUTIVE COMMITTEE

Jordon Wertheimer, President
Liz Modell, Vice President/President Elect
David Foltyn, Vice President
Maxine Lievois, Vice President
Warren Rose, Vice President
Adam M. Lutz, Treasurer
Robin Fenberg, Secretary
L. Steven Weiner, Immediate Past President
E. Todd Sable, Member-at-Large
Alex Stotland, Member-at-Large

AFFILIATES

Elaine Brockman, Beth Elders
Bruce Plisner, Brotherhood
Elaine Schonberger, Women of Temple Beth El
Alecia Rice, The Kid-ish Club
Ari Richardson, Beth El Temple Youth (BETY)
Amy Byer & Emily Rosenberg, K-5 K'hilah Club



TEMPLE
BETH EL

7400 TELEGRAPH ROAD
BLOOMFIELD HILLS, MI 48301
WWW.TBEONLINE.ORG

Periodicals
Postage Paid at
Royal Oak, MI

TIME VALUED

— The Megillah According to John Hughes —

ESTHER'S

PROM

We'll sing and dance to '80s hits,
enjoy light hors d'oeuvres by
Cutting Edge Cuisine, and maybe
even spike the punch bowl!

WEDNESDAY, FEBRUARY 28 @ 7PM

Join us for Esther's '80s Prom which tells the Book of Esther in the style of a John Hughes film like "Sixteen Candles" and "The Breakfast Club." Esther is captain of the soccer team, Rosh is Prom King, and Mordechai is president of the Jewish Student Union. We invite you to dress up as an '80s student and actively participate in Esther's prom night.

OPEN TO THE COMMUNITY

For more information or to RSVP (Deadline: Feb 19), contact Rachel Rudman rrudman@tbeonline.org, 248.851.1000.