

DECEMBER 2016 KISLEV 5777

VOL. 30 ISSUE 3

the Bulletin

Temple Beth El ... Our Spirit is Growing



HAPPY
HANUKKAH

The Joys of Shabbat at Temple Beth El




Join us for
this high-energy,
spiritual, and
thought-provoking
service.

TBE music shabbat

FRIDAY, DECEMBER 2 6:00 PM

The entire community is welcome to join us for this much-loved Shabbat service!



Kabbalat SHABBAT

TEMPLE BETH EL

FRIDAY, DECEMBER 16 at 6:00 PM

Music, dinner & fun activities for families with elementary aged children.

\$10 PER CHILD \$12 PER ADULT

RSVP to Joey Unger at junger@tbeonline.org or 248.851.1100.



For families with children, ages 0-6+.

- PRESENTS -

Small Fri Shabbat

Join us as we
team up with
Good Shabbos
Detroit-JFamily
Edition



**FRIDAY, DECEMBER 9
5:30 PM**

We'll have a family service of singing and
prayers followed by a kid-friendly
dinner and dessert!

(DINNER \$36 PER FAMILY)

REGISTER ONLINE AT

jewishdetroit.org/event/good_shabbos_detroit-be/

For questions, contact Alyssa Gorenberg at
248.203.1485 or gorenberg@jfmfd.org

- AND -



*A fun, musical Saturday morning
experience.*

Saturday, December 3

**9:30 am Service in the Chapel,
Kiddush & activity following.**

DANIELLE'S D'VARIM

While New Year's resolutions help facilitate self-reflection, they also set us up for failure with the amount of weight they are given as well as the number of them we create. We make Top 10 lists which we post on social media and tell all of our friends, hoping to be held accountable, and then when February comes, we are back to our pre-New Year selves. As January approaches, I am inundated with emails and articles about resolutions for the New Year. "Top 10 Healthiest New Year's Resolutions" and "1000+ ideas about New Year's Resolutions" show up on my Facebook feed. There was a point in time when I excitedly opened and read these articles, word for word, making my own New Year's resolution list. I started the list on December 1, adding all of the things I wanted to do in the new year and continued to add to the list until the last week in December.

During this last week of December, as I frantically tried to solidify my plans for New Year's Eve, I whittled down my resolutions and created a Top 3 list. Had I known then that only 8% of Americans are successful in achieving their resolution (according to the Statistic Brain Research Group), I probably would not have spent so much time on this project. Today, my resolution is simple, and I don't need a list on my refrigerator to remind me what it is. My one resolution is: to be better. Perhaps instead of saying my resolution is simple, I should say it sounds simple. What does better mean? And what does it look like?

This past November, our Temple hosted 150 guests who participated in a program called Religious Diversity Journeys. Lead by the Interfaith Leadership Council, this program introduces 7th grade students to various religions and cultures in the Metro Detroit area. The participants are from 16 school districts and 38 different schools. Some wear hijabs, some wear uniforms, others have rainbow colored hair. Throughout the school year they come together to learn about Judaism, Christianity, Islam, Sikhism, and Hinduism and find a common denominator among them. This is better.

When I was younger, during the holiday season, my mom and I used to go shopping together. Not only would we buy Hanukkah gifts for the family but we also bought presents for whatever family we adopted through a local non-profit. Upon leaving the store, my mom would always have a hot drink for the bell ringers outside. When I asked why she didn't just put money in their red kettle for tzedakah, she said, "These people stand in the cold to collect money for others. They are doing a selfless act and we should not forget about them". This is better.

Holding the door open for a person in a hurry. Giving the benefit of the doubt. Learning from mistakes. Creating memories with family and friends. Taking care of oneself. These are better. For me, the resolution of being better is a resolution that can be done every day—it doesn't have to wait for the New Year. I challenge all of us to be better: to participate in acts of kindness, to nurture ourselves and others, to grow. Let us set aside time every day to reflect and choose to focus on the good and change the parts that need fixing. This coming New Year brings excitement and a new program, TBE's Giving Tree, that will help us "be better" together as a Temple.

I wish you all a wonderful holiday season and a very happy and healthy new year.

#TBEintheD

Danielle Gordon, Program Director
dgordon@tbeonline.org



TBE's Giving Tree

At Beth El, we are rooted in tradition. TBE's Giving Tree is a new Temple-wide initiative to strengthen those roots and cultivate our engagement in *tikkun olam* and *tzedakah*. Each month, beginning in January 2017, we will partner with a local agency to collect an item(s) on their wish list. The collections will be organized by one of the diverse groups here at Temple. We encourage you not only to participate in giving, but also in branching out to learn about the various non-profits and how they are participating in the *mitzvah* of repairing the world. Our Spirit is Growing ... let's help others do the same!

Hanukkah Is Upon Us



SHABBAT IN THE ROUND
FRIDAY, DECEMBER 23
6:00 PM SANCTUARY FOYER

Join your Beth El friends & family
for a festive service and a delicious

**PRE - HANUKKAH
LATKE ONEG!**

Each family should bring a hanukkiyah to light.

**Mixing, Making
& Maccabee Baking**

For families with children 0-2 years of age. Preschool aged children with an adult are also welcome.

FREE OF CHARGE

**SUNDAY,
DECEMBER 4
4:00 - 5:30 PM**

We will share in holiday traditions, and you will take home our creations and Hanukkah recipes.



RSVP to Jen Goren at
jgoren@tbeonline.org or
248.851.1100.

Please bring a canned food item to help us build a huge can hanukkiyah.
(After Hanukkah, the cans will be donated to Yad Ezra)

**Program costs subsidized by a grant funded by the
HERMELIN-DAVIDSON CENTER FOR
CONGREGATIONAL EXCELLENCE.**



Enjoy Potato Latkes and Music



**Welcome Hanukkah with
the Beth Elders and
The Heartland Klezmerim!**



THURSDAY, DECEMBER 8

NOON - LUNCHEON - HANDLEMAN HALL
\$10 PER PERSON

Open to the entire community.

Enjoy a sit-down luncheon with Potato Latkes followed by the music of the Heartland Klezmerim, a six piece band that will keep your toes tapping to old & new Klezmer tunes, Yiddish folk melodies, and Jazz interpretations from the Yiddish theater.

RSVP to Danielle Gordon at 248.851.1100 or
dgordon@tbeonline.org by Friday, December 2.

 **MASORET** *Celebrating
through the
Jewish Year*
TBE SUNDAY MORNING
ADULT EDUCATION SERIES

HANUKKAH

PRESENTED BY RABBI MEGAN BRUDNEY

SUNDAY, DECEMBER 11 from 10:00 - 11:00 AM

For more information, contact Debbie Morosohk,
at dmosohk@tbeonline.org or 248.851.1100.

Judaica Gift Shop

Hanukkah is just around the corner...check out our newly-renovated store, sparkling with an exciting selection of dreidels, menorahs, and gifts for all occasions.



**December is
50% OFF
scarves and
decorative
perfume
bottles!**

We carry many items from Israel and highlight merchandise from Israeli artists.



Stop and shop today, your purchase helps support Temple Beth El and Israel!

**WOMEN of TEMPLE BETH EL
JUDAICA GIFT SHOP HOURS**

Sunday 9 AM - 12:30 PM

Tuesday & Wednesday 10 AM - 2 PM

For an appointment contact Cindy Bolokofsky
at 248.431.8536.

*We welcomed new members,
and said hello to old friends!*

The Women of Temple Beth El and their guests enjoyed a delightful evening at their annual Paid Up Membership Event held last month.

Attendees were treated to a fun and very informative talk by TBE member and restaurant reviewer, Jorin Rubin, on "What is New in the D", as well as a lovely wine and dessert reception, catered by Cutting Edge Cuisine. Thank you to Event Chair Rochelle Nelson, Jorin Rubin and Aaron Lowen for a successful event!

Jorin can be followed on her Instagram account "24ateDetroit."



SAVE THE DATE

Nosh & Knowledge

SATURDAY, JANUARY 28, 2017

Sponsored by the Women of Temple Beth El

Moments to Remember

We Are Proud

Temple Beth El is proud to
announce the marriage of
CAROLYN SLOMAN MARX,
the daughter of Sally Sloman Marx of
Bloomfield Hills, and the late
Frederick H. Marx (z"l) to
**ALEXANDER MICHAEL
CARRAVALLAH.**

Carolyn is a sixth generation Temple member, and the granddaughter of the late Eleanor & Robert Sloman (z"l); Florence Zox of Columbus, Ohio, and the late Dr. Maurice Zox.

Carolyn recently received a dual MBA in Supply Chain Management and Marketing from Arizona State University and is employed at Raytheon.

The couple reside in Dallas, Texas.

We all had great Fall experiences in the Sukkah!



INTRODUCTION TO JUDAISM

Join Rabbi Mark Miller for 12 engaging sessions about the history, practice, and values of Jewish life. This class is the first step toward conversion, but is open to anyone interested in learning more about Judaism.

THE CLASS WILL MEET ON WEDNESDAYS 7:00 – 8:00 PM IN THE LIBRARY

**Wednesdays: January 18; February 1, 15; March 1, 15, 29; April 26; May 10, 24, and June 7, 21.
As well as Tuesday, April 11 for the 2nd night of Passover Seder.**

Cost is \$72/person. Please contact Laura Lucassian at 248.851.1100 or llucassian@tbeonline.org for more information or to register.



Friends and family shared in a wonderful Simchat Torah & Consecration celebration at TBE!



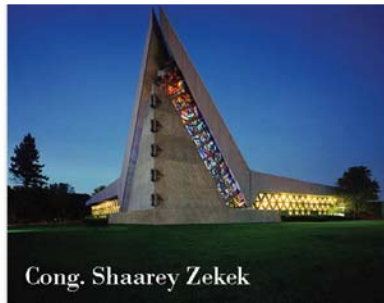
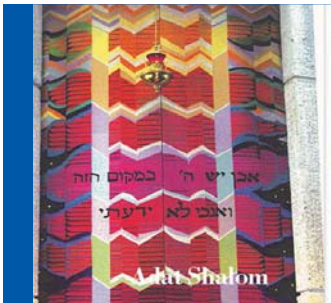
ON TUESDAY, NOVEMBER 1, AN OVERFLOW CROWD FILLED THE ONE THIRD HALL TO HEAR PROFESSOR HASIA DINER DISCUSS HER MOST RECENT BOOK:

Roads Taken, The Great Jewish Migrations to the New World and the Peddlers Who Forged the Way.

Hasia charmed the audience as she explained how young Jewish peddlers, with 100 pounds of consumer goods strapped onto their backs, made inroads into the hinterlands of the United States and other countries. They were frequently the first people of the Jewish faith that their isolated customers met. In most instances the peddlers were greeted with curiosity and hospitality, which lead to the development of a mutual respect between the parties concerned. The delivery of consumer goods directly into the homes of customers whetted their appetite for items such as curtains, tablecloths and pictures that were considered luxuries on the frontier, thus setting the stage for a revolution in consumerism. Hasia also touched on the darker side of peddling: adversarial confrontations with local shopkeepers and the robbery and sometimes murder of the young men who were known to be carrying desirable goods and cash.

Hasia Diner was born in Madison, WI, and completed her undergraduate studies at the University of Wisconsin at Madison. She received her doctorate from the University of Illinois, and currently is the Paul S. and Sylvia Steinberg Professor of American Jewish History at New York University, and Director of the Goldstein-Goren Center for American Jewish History at NYU.

The Mary Einstein Shapero Memorial Lecture, established in 2005, is underwritten annually by the Honorable Walter Shapero. The event is co-sponsored by the Jewish Historical Society of Michigan. Images courtesy of Elayne Gross Photography.



FIVE SYNAGOGUES: *The Art, Architecture, and History of Five Present-Day Houses of Worship*

Join the Jewish Historical Society of Michigan as we explore five Jewish synagogues whose members have preserved and retained historic artifacts from their past, including architectural and ceremonial pieces. Congregation leaders, including clergy and historians, will discuss the history of the congregation, the building architecture and the art and artifacts that travelled with the congregation from their old buildings.

THE TOUR BEGINS AND ENDS AT TEMPLE BETH EL CONCLUDING WITH A CAKE & COFFEE RECEPTION.

SITES BEING VISITED INCLUDE: Temple Beth El, Temple Israel, Congregation B'nai Moshe, Adat Shalom Synagogue, and Congregation Shaarey Zedek

SUNDAY, DECEMBER 4 12:30 - 4:30 PM

BUS TRANSPORTATION: DEPARTS PROMPTLY at 12:30 PM from TEMPLE BETH EL



JHSM MEMBERS: \$40 per person NON-MEMBERS & GUESTS: \$50 per person
Tour fees include all fees and post-tour cake & coffee reception.

TO REGISTER: CALL 248-432-5517 or visit MICHJEWISHHISTORY.ORG.

Upcoming Events

BITES & BOOKS

TBE BLOOMFIELD HILLS MI

Join us for an exciting new year of Bites & Books.

2017
SESSION

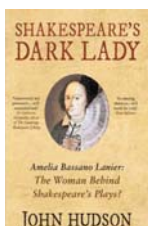
JANUARY 9

Morning Session: 10 AM

Evening Session: 7 PM

Shakespeare's Dark Lady

by John Hudson



Amelia Bassano was born in 1569 into a family of Venetian Jews who were court musicians to Queen Elizabeth I. Drawing upon a wealth of documentary evidence, this controversial and provocative book unites Tudor history, feminism, and Shakespeare scholarship to demonstrate that Amelia Bassano was in all the right places, had knowledge, skills, and contacts to have produced the Shakespearean canon.

Facilitated by Barbara Goldsmith, Educator

CONTACT



Debbie Morosohk
Director of Education
dmorosohk@tbeonline.org
248.851.1100

FEES

The 5 book series is \$25
There is a \$10/session drop-in fee.



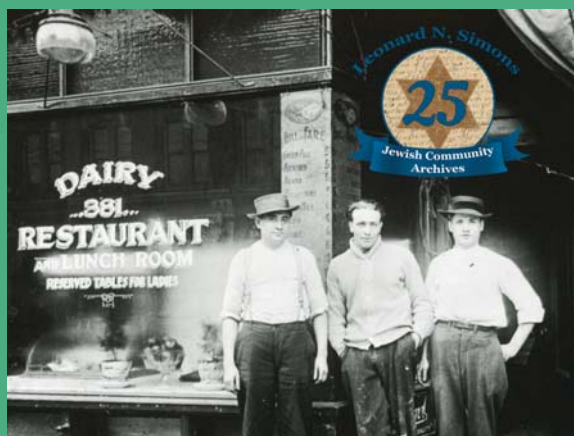
*Breakfast every Sunday
9:00 am in Handleman
Hall when Religious
School is in session.*

Bagel & Coffee \$2. Full Breakfast \$3

*Breakfast Speaker
9:30 am December 18*

FREE OF CHARGE

Look what's popping up at Temple Beth El!



The Leonard N. Simons Jewish Community Archives is celebrating its 25th anniversary with a series of pop-up displays, showcasing Detroit's Jewish history.

IN DECEMBER, TBE WILL BE HOSTING THE SHTETL IN THE CITY PANEL

Fleeing harsh anti-Semitic laws, an influx of Jewish immigrants arrived in Detroit, 1880-1920. Discover how they blended "old world" ways with a new American lifestyle and found a place to call home.

SHTETL IN THE CITY

Join us as we take an in-depth exploration of the similarities and differences between Orthodox, Conservative, Reform and Humanistic Judaism!

Exploring our Religious Landscapes

Immersive Experiences in Religion and Culture
for Adults

Comparative Judaism Series

Young Israel of Southfield: Tuesday, January 17, 9 AM - NOON
TEMPLE BETH EL: WEDNESDAY, FEBRUARY 8, 9AM - NOON
Congregation Beth Ahm: Thursday, March 23, 9 AM - NOON
The Birmingham Temple: Wednesday April 26, 9 AM - NOON

For more information and to register please visit
www.detroitinterfaithcouncil.com and click on "Educational Programs"

Welcome Home and Mazel Tov Rabbi Brudney!

A TRULY Special Occasion.

Temple Beth El officially installed Rabbi Megan Brudney on November 4, 2016. The evening was highlighted with spiritually uplifting music, prayer, and warm words of admiration. The future of our Temple is looking even brighter as our clergy team grows to meet the needs of our congregation and community!

You may view additional photos and videos at www.tbeonline.org/photos-videos



Rabbi Brudney and family.



TBE Music Shabbat Band



Jordan Wertheimer, TBE President



Jim Marks & Sue Green



Anne & L. Steven Weiner



Melissa Schiller & Emily Rosenberg



Rabbi Brudney delivering the Shabbat blessing.



Rabbi Brudney & special guest, Rabbi Rachel Nussbaum.



TBE clergy L to R: Rabbi Daniel B. Syme, Cantor Rachel Gottlieb Kalmowitz, Rabbi Mark Miller, Rabbi Megan Brudney, and special guest, Rabbi Rachel Nussbaum.



Jim & Lynn Newman



Raymond Rosenfeld & Janelle McCammon



L to R: Lisa London, Rachel Fenberg, and Jorin Rubin.



TBE SOUP KITCHEN INITIATIVE

Make Tikkun Olam, repair of the world, an ongoing part of your family's Jewish life.

TBE's soup kitchen initiative is a monthly opportunity for TBE teen families to volunteer to help feed the hungry at the Detroit Orthodox Outreach soup kitchen.

CARPPOOL LEAVING TEMPLE AT NOON RETURNING TO TEMPLE BY 3:00 PM

SUNDAY, DECEMBER 4

January 8, February 5, March 5, April 23, May 21 and June 4

Open to all TBE 7th-12th graders and their families. Participants may come as many times as they would like and students can earn community service hours.

RSVP to Joey Unger at junger@tbeonline.org or at 248.851.1100.

Join Joey
and
Rabbi Brudney

Lawson in Toronto!

JANUARY 13 - 15, 2017

All Temple Beth El 8th-12th graders are invited to our Lawson Community Service Weekend.

\$200 PER TEEN
Price includes Bus, Hotel, and all food and activities for the weekend.

SCHOLARSHIPS ARE AVAILABLE!

For more information or to RSVP, please contact Joey Unger at 248.851.1100 or at junger@tbeonline.org

Explore the Toronto Jewish Community, get involved in great community service projects, and have an adventure with your friends!

HIGHLIGHTS INCLUDE:

- Visit the Toronto Aquarium • Dinner and a Show at Medieval Times
 - Dine at the Iconic St. Lawrence Market
 - Meet Jewish Teens from Toronto
- Create care packages and deliver them to the homeless in Toronto
 - Tour the city • And much more!



The Lawson Youth Institute trip, generously sponsored by the Ellin and Harold Lawson Youth Institute Fund, is an annual weekend of service, friendship and learning for Temple Beth El teens.

MAZEL TOV TO OUR 2016 CONSECRATION STUDENTS AND THEIR FAMILIES!



Our Consecration ceremony was held on Sunday, October 23, at our Simchat Torah service. Students led the congregation in the Sh'ma, were blessed by clergy in front of the ark, and helped lead the hakafot, marching and dancing around the sanctuary with the Torah.

Jillian Byer
Sophie Drouillard
Sarah Fearon
Charlie Feldman
Avery Fuger
Michael Fuger
Adam Gallagher

Oscar Genser
Samson Goren
Zoey Hill
William Hoffa
Benjamin Ishbia
Ilana Kalmowitz
Emery Kasle

Blake Merolla
Eli Panza
Connor Shirley
Noah Sorser
Brian Stutman
Jackson Wolfe
Hudson Wurn



Temple Beth El had several campers at GUCI last summer and we hope to have many more in 2017. Please consider giving your child the gift of this extraordinary Jewish camp experience.

SUNDAY, DECEMBER 4

**Come meet GUCI Camp Director, Jeremy Klotz
11:00 – 11:30 AM in the CHAPEL FOYER
GUCI PRESENTATION 11:30 AM – NOON in the CHAPEL**



Since 1958, Goldman Union Camp Institute (GUCI) has provided campers a place to build lifelong friendships, explore Judaism, and have the time of their lives. Studies show that attending a Jewish summer camp does more to positively develop Jewish identity in our young people than most traditional types of programming. Our GUCI campers come back with enthusiasm and love for their Judaism, as well as memories and friendships that last a lifetime.

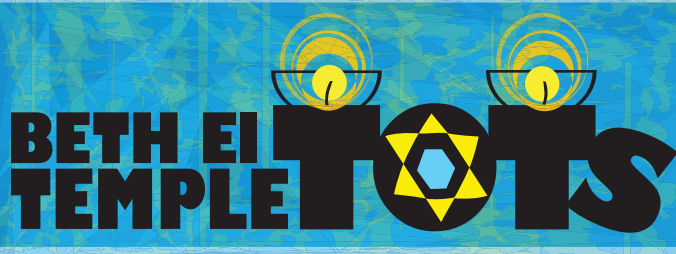


Come join your TBE friends for a fun evening which will include pizza dinner, a movie, and playing ga-ga at Temple! We will also have S'mores for dessert!

**5TH & 6TH GRADERS 3rd & 4th GRADERS
SATURDAY, DECEMBER 3 SATURDAY, DECEMBER 10
6:00 – 8:00 PM ALPERT ROOM/TEMPLE BETH EL**

No Charge for 3rd, 4th, 5th & 6th Graders who attend our Religious School.

For more information or to RSVP, please contact Joey Unger at 248.851.1100 or at junger@tbeonline.org.



FRIDAYS 9:15 - 10:45 AM

Temple Tots is for children 1 to 2 years of age. Join ECC Director Susie Weiner and engage in art, music, open-ended playtime and a musical Shabbat celebration each week.

For more information, contact Susie at 248.851.1100 or sweiner@tbeonline.org

Tributes

Tributes from October 7 through November 7, 2016

RAYMOND & SHIRLEY ABRAMS YOUTH GROUP RECREATION FUND

IN MEMORY OF
FREDRICK RAPOPORT
Wendy & Henry Abrams

BLOOMGARDEN RELIGIOUS SCHOOL FUND

IN HONOR OF
RABBI MEGAN BRUDNEY'S INSTALLATION
Lori & Jeffrey Lasday

THE FRED & JEANNETTE SARAH BRADFIELD MEMORIAL LIBRARY SHELVES

IN MEMORY OF
FRED BRADFIELD
Barbara & Louis Bradfield

BROTHERHOOD FELLOWSHIP FUND

IN MEMORY OF
ABIE EIGEL
Harriet & Mark Cooperman
ELAINE STERN
Dr. Bruce Jacob
IN HONOR OF
80TH BIRTHDAY OF DR. ALFIE KREINDLER
Dr. Bruce Jacob

RABBI BRUDNEY DISCRETIONARY FUND

IN HONOR OF
INSTALLATION OF RABBI MEGAN BRUDNEY
Lucille Miller, Nadine Cracraft,
Sandy & Lee Marks, Evelyn & Julian Prince,
Phyllis Loewenstein & Sheldon Plotnik,
Lisa & Jordan London
RABBI MILLER, RABBI BRUDNEY, AND
CANTOR GOTTLIEB KALMOWITZ TO THANK
YOU ALL FOR A WONDERFUL
ROSH HASHANAH
Nadine Cracraft

DEUTCHMAN FAMILY FUND

IN HONOR OF
ENGAGEMENT OF CARA DEUTCHMAN
Amy & Stuart Brody

RABBI LEO M. FRANKLIN ARCHIVES FUND

IN MEMORY OF
MIROSLAV KOGAN
Brienne Silberschein, Graham and Lindsey,
Charlie and Jack
JEANNETTE MACWILLIAMS
Nancy Chernokiv, Harriet & Mark Cooperman,
Barbara Grant, Elayne Greenspan, Paul & Fran
Hack, Sandy & Lee Marks, Audrey Zupmore,
Rose & David Handleman, Miriam & John
Cohen, Madelyn Wolfe, Peggy & Dennis Frank
JUDITH MAXWELL
Harriet & Mark Cooperman

IN HONOR OF
BIRTHDAY OF KIM ROSNER SAXE
BIRTHDAY OF MARK COHN
BIRTHDAY OF TOM STONE
Collette Rosner
INSTALLATION OF RABBI BRUDNEY
Phyllis Kaplan

FRIENDS OF THE PRENTIS LIBRARY FUND

IN MEMORY OF
SHIRLEY RUTH STEINBERG
Maj. Irving Steinberg
SYLVIA BABCOCK
Barbara Cooper
IN HONOR OF
BAR MITZVAH OF JOSHUA TOMPKINS
Andrea & Robert Stoler
BIRTHDAY OF AUDREY ZUPMORE
Marjorie Yaro and Marc Zupmore

GENERAL OPERATING FUND

IN MEMORY OF
DOROTHY FINKEL
Linda & Bob Finkel
MICHAEL PACKARD
Enid & Martin Packard
MIROSLAV STEVE KOGAN
James, Donna, Elizabeth and Kathleen
Chambers
SHELDON DECKER
JAMES LAKER
ABIE EIGEL
Dorothy Decker
ROSE STEINHARDT
Mrs. Marjorie Hecht Simon
A DONATION
Clarkston United Methodist Church

PAUL & SONIA HANDLEMAN MEMORIAL FUND

IN MEMORY OF
SOL DRACHLER
Rose & David Handleman

HIGH HOLY DAYS DONATIONS

IN HONOR OF
THE NEDELMAN FAMILY
Randall & Sharan Levine & Family
A CONTRIBUTION
Melanie & Martin Weiss
A DONATION
Roberta Black, Harold & Flora Cherny, Jan
Freedman, Emmanuel Gauzer, Barbara
Goldman, Gerald & Margaret Graff, Arnold
Joseff, Paula Kaplan, Dr. and Mrs. Richard
Kulbersh, Donna Mandell, Gail Reichstein,
Stephen Sucher, Carol & Norman Wechsler

THE MICHELSON-HABER MEMORIAL FUND

IN MEMORY OF
SCOTT BOORSTEIN
Elly Rose

RABBI RICHARD C. & RENDA HERTZ GIFT OF LIFE FUND

IN MEMORY OF
CLARE KING
Eleanor Blum

JEWISH WAR VETERANS IN SUPPORT OF LIBRARY FUND

A DONATION
Jewish War Veterans

CANTOR RACHEL KALMOWITZ DISCRETIONARY FUND

IN MEMORY OF
MICHAEL PACKARD
Rita & Herb Packard
IN HONOR OF
CANTOR KALMOWITZ'S PARTICIPATION IN THE
WEDDING OF LAUREN & JORDAN
Cheryl & Ronald Kerwin
A DONATION
Sandy & Lee Marks

CANTOR RACHEL KALMOWITZ MUSIC FUND

IN HONOR OF
SPEEDY RECOVERY FOR STACY DEWEESE
Ken Korotkin
THE BIRTHDAY OF DR. MILTON F. SIMMONS
Freda Adler
SPECIAL BIRTHDAY OF NORMAN PAPPAS
Ken Korotkin

THE BABS & HERB KAUFMAN LISTEN IN FUND

IN MEMORY OF
LEO BIGELMAN
Jerrold Bigelman
IN HONOR OF
ANNIVERSARY OF
MICHAEL & SANDRA HERMANOFF
ANNIVERSARY OF ROBERT & RHEA BRODY
ANNIVERSARY OF
I. WILLIAM & MARGIE OBERFELDER
BIRTHDAY OF CHARLES LEWIS
BIRTHDAY OF DALE CHARNAS
BIRTHDAY OF DALE FRENKEL
BIRTHDAY OF ERIC CANVASSER
BIRTHDAY OF EUGENE APPLEBAUM
BIRTHDAY OF I. WILLIAM OBERFELDER
BIRTHDAY OF LUCILLE MILLER
BIRTHDAY OF MARC DUNN
BIRTHDAY OF NORMAN PAPPAS
BIRTHDAY OF NORMAN STERN
BIRTHDAY OF PATRICE PHILLIPS
BIRTHDAY OF RENEE JABLONSKI
BIRTHDAY OF ROBERT BLUESTEIN

BIRTHDAY OF SYDELL SCHUBOT
BIRTHDAY OF SYLVIA HAMBURGER
Babs & Herb Kaufman

ELLIN & HAROLD LAWSON YOUTH INSTITUTE FUND

IN MEMORY OF
MY BELOVED FATHER, MANUEL E. ARDEN
Ellin Lawson

MARSHALL & PHYLLIS LOEWENSTEIN FAMILY CAMPSHIP FUND

IN MEMORY OF
JEANNETTE MACWILLIAMS
Phyllis Loewenstein & Sheldon Plotnik

ISADORE & FRANCES MALIN INTERFAITH ACTIVITIES FUND

IN MEMORY OF
PHILIP SCHONBERGER
FRANCES R. MALIN
JACOB D. HARTMAN
Elaine & Mark Schonberger and Family

RABBI MILLER DISCRETIONARY FUND

IN MEMORY OF
BILL KATZ
David & Pam Katz
IN HONOR OF
BEAUTIFUL KOL NIDRE SERVICE
Julie & Andrew Rosenfeld
RABBI MARK MILLER
Lucille Miller

MARIAN & BEN NATHANSON AND CHARLES NATHANSON BROTHERHOOD MEMORIAL YOUTH FUND

IN MEMORY OF
ETHEL MARX
Jane Steinger

HARRY & SALLY NOSANCHUK CARING COMMUNITY FUND

IN MEMORY OF
DONNIE LEVIN
Harry Nosanchuk
FREDERICK RAPOPORT

RICHARD LUSTIG
*Harry Nosanchuk, Linda, Scott, Eric &
Hilary Sircus*
DONNIE LEVIN
DR. MILTON MEYERS
JARED SCOTT FELDMAN
JASON PHILLIP ZAKS
Linda, Scott, Eric & Hilary Sircus

IN HONOR OF
BAR MITZVAH OF NATHAN MOSS
Linda, Scott, Eric & Hilary Sircus
ANNIVERSARY OF MARGIE & BILL OBERFELDER
BIRTHDAY OF BERNICE TILLMAN
BIRTHDAY OF ELYSE SCHOSTAK
BIRTHDAY OF I. WILLIAM OBERFELDER
BIRTHDAY OF LARRY COHEN
BIRTHDAY OF LINDA SIRCUS
BIRTHDAY OF SYDELL SCHUBOT
SPEEDY RECOVERY OF KENNY TILLMAN
Harry Nosanchuk

MEYER & ANNA PRENTIS RELIGIOUS SCHOOL FUND IN MEMORY OF JIMMY MORRIS & WALLY STRAUS

IN MEMORY OF
CLARE KING
Audrey Zupmore
IN HONOR OF
ALAN LOWEN
Margie Winston
SPECIAL BIRTHDAY OF RITA PACKARD
Susan & Jerry Chapnick

LEONARD N. SIMONS FUND

IN MEMORY OF
LEONARD N. SIMONS
Mary Lou Zieve

SISTERHOOD BRAILLE FUND

IN MEMORY OF
JEANNETTE MACWILLIAMS
Marlene & Harvey Goodman
IN HONOR OF
85TH BIRTHDAY OF JULIAN GREENEBAUM
Sandy & Lee Marks
SPECIAL BIRTHDAY OF RITA PACKARD
Sandy & Lee Marks
A DONATION
Sandy & Lee Marks

RABBI DANIEL SYME DISCRETIONARY FUND

IN MEMORY OF
ARMENA AMY LIGHT
Sol H. Light
EVELYN FOSTER-WAGEN
Arthur Foster
IN HONOR OF
RABBI SYME
Jane Rose Von Gott
RABBI SYME'S DEDICATION & SERVICE
TO TEMPLE BETH EL & BECOMING
RABBI EMERITUS
Jackie & Larry Kraft
ANNIVERSARY OF AUDREY & HERB SAPERSTEIN
Rita & Herb Packard
A DONATION
George Clancy

TEMPLE BETH EL ARCHIVES SUPPORT FUND

IN MEMORY OF
JEANNETTE MACWILLIAMS
Patrice & Eric Phillips

TEMPLE BETH EL MITZVAH MEAL FUND

IN MEMORY OF
MICHAEL MULLER
Bella & Lev Shleypak

TEMPLE BETH EL YOUTH WING FUND

IN MEMORY OF
BENTON SLATKIN
MARY LOU LEULIETTE
Ashley & William Slatkin, and Leslie Slatkin
RICHARD LUSTIG
Leslie Slatkin

MAMIE & JASON TICKTON MUSIC FUND

IN HONOR OF
BIRTHDAY OF ALFIE KREINDLER
Fran & George Stern

REGINA WEISS FUND TO BUILD A GREATER SUNDAY MORNING MINYAN

IN MEMORY OF
ABE EIGEL
Audrey Zupmore

GIVING OPPORTUNITIES...

Tzedakah (righteous giving) is one of the oldest and most strongly held principles of Judaism. One way to perform tzedakah is donating to one of the Temple's various tribute funds to honor or remember a loved one or friend. Others include:

- **Purchasing a Simchah Leaf** • **Dedicating one of the 18 tribute trees we have planted on Temple grounds.**
- **Memorializing a loved one with a Yahrzeit Plaque.** • **Honoring a loved one with a dedicated bench, adorned with an engraved plaque.**

For more information on any of these opportunities, please contact
TBE Executive Director, Kim Raznik, at kraznik@tbeonline.org or 248.851.1100.

Yahrzeits



We note with Sorrow the Passing of...

LEE J. GARVIN

Husband of Tobi Greenspan

SAMANTHA KAY GOODMAN

Daughter of Karin Ughetti and Ben Goodman

Niece of Morgan Goodman

MIROSLAV "STEVE" KOGAN

Husband of Irina Kogan

Father of Nathan Kogan and

Emil Kogan

JEANNETTE MACWILLIAMS

Mother of JoAnn MacWilliams-Wolf,

Suzanne MacWilliams,

Steven MacWilliams, Keith MacWilliams,

Henry MacWilliams, Amy MacWilliams,

and Miriam Moxon

DECEMBER 4-10

ETHEL ALTMAN
EDITH BARIL
* ELLEN BARNETT
MORRIS BARON
* BEATRICE ELEANOR
BEITMAN
* HERMAN BERMAN
MAX BIBER
BERNARD BORENSTEIN
* ELIZABETH H. BRODIE
JUDGE BENJAMIN D.
BURDICK
SONIA CHRISTIE

EDWARD COHEN
LESLIE E. COLBURN
DAVID DASHOW
* JOSEPH DEYOUNG
IRIS FELDMAN
* JACK FRANK
* SANDRA BALABAN FRANK
AARON FRIEDMAN
* MARTIN L. FRIEDMAN
* ADA S. GLAZER
SAM H. GOODMAN
* HERMAN GRAND
IRVING A. GRAND

* SYLVIA SIMON GREENBERG
* JUDGE SAMUEL C.
HALPERT
* SARAH HANDLEMAN
HON. WILLIAM J.
HATHAWAY
ABRAHAM HENDIN
SIDNEY HILLER
* DAVID HOLLANDER
* GEORGE S. JACKSON
* BETTY JO GOLDMAN
JANEWAY
* MILTON JANSKY

ABIGAIL KATZ
HERMAN KATZ
MURRAY D. KATZ
* SAMUEL GEORGE
KEYWELL
BEN KLAR
ARLENE KLEINBERG
* DOROTHY J. KOPLOY
* SHELDON B. KRAUSE
* IRINA KUCHEROVA
* AID KUSHNER
RICHARD KUX
MARJORIE F. LEOPOLD

SAMUEL LEVENSON
* FREDERIKA LOEWENSTEIN
* AUDREY BENSON MANDEL
HYMAN MYER MARGOLIS
RICHARD MARKS
* HENRY MEYERS
* HARRY J. MILLMAN
LEE ELLEN MONCHNIK
WILLIAM NAPERS
* GOLDY JEAN NELSON
* GEORGE POLASKY
* MYRTLE REDISCH
RICHARD REINICKE

JOSEPH HARRY REMER
* ARTHUR T. ROSENBERG
SAMUEL ROSENFELD
MARILYN DOLLY
ROTENBERG
BERNICE RUBY
AARON RUSUNIK
FAYE SAFFER
DOROTHY SCHAFFER
ILSE W. SCHILD
ABE A. SCHMIER
ZELDA SHAY
* LEOPOLD J. SNYDER

* HERMAN SPRINGER
* FRED A. STAUB
DR. JOHN STURMAN
MARTHA TAYLOR
SHIRLEY WARD
* MELVILLE WARREN
ARNOLD WEINBERGER
ALBERT WEISS
* WILLIAM WENST
JULIUS D. WURM
JOYCE ZISHOLZ
* JOSEPH E. ZITOMER

DECEMBER 11-17

* EVELYN W. BARON
* NATHAN BLOCH
RITA RUTH BRENNAN
* VERA BRODE
* HARRY BROWN
* ROSE BROWN
MAX BUCHSTANE
* ROSE JACOBS BYRON
* MICAH DONALD
CANVASSER
* DR. SAMUEL J. CHAFETS
IRVING CHASNICK
LILLIAN CRANIS

* MARION DAVIDSON
* SIDNEY DENENBURG
* AL DRESCHER
* MINNA ELLIMAN
* JOSEPH FINK
SHIRLEY KEYWELL
FLETCHER
* LEOPOLD FREUD
CLARA FRIEDMAN
* EMANUEL M. FRIEDMAN
SARA GARD
ROBERT GASSEL
* JENNIE GINSBURG

* MAX GOLDBERG
* JENNIE GOTTFRIED
HARRY GREENBAUM
SUSAN HAMBURGER
* DAVID HANDLEMAN SR.
BENJAMIN HILTON
* LILLIAN HIRSCHFELD
CELIA HOMBURGER
* DOROTHY M. KARBEL
* DAVID PAUL KATZ
IRA KAUFMAN
NORMAN KAUFMAN
DR. PAUL KERWIN

MARCIA KUSHNER
* ANNA LAZAROF
* CELIA LEFTON
GERALD L. LEOPOLD
* EVE LEWIS
* CHARLES M. LEYTON
DOROTHY LIPSHIELD
* LOUIS LUMEL
* EDITH LURIE
BETTY MARKS
* SAUL VICTOR MATTUS
* BENJAMIN MESHORER
HAROLD PHILLIP MILLER

LEO E. MORRIS
SYLVIA NEDELMAN
* MORTON NEWLANDER
RUTH OBERNDORF
BERNARD PESICK
MELBA R. PRENTIS
MIRIAM RATTNER
MAX ROSEN
* SARAH ROSENZWEIG
ANN Z. ROSS
ALEXANDER RUBIN
DAVID MITCHEL RUDICK
* BERNARD SAMUELS

BIRDIE SANDELMAN
* BETTY F. SAPERSTEIN
BERYL SAVAGE
DR. DAVID HAROLD SAXE
PHILLIP SCHONBERGER
JARED "BUD" SCHUBINER
ABRAHAM SCHUBOT
* SAMUEL SCHUBOT
* DR. DAVID J. SCHWARTZ
* MILTON SHAFRAN
* ETHEL SILVERMAN
ABRAHAM SINGER
MILTON STEARN

GLORIA STEINBERG
DR. LAWRENCE STOCKER
* MAX STULBERG
BERNICE VIVIANO
MAXINE WALLS
* SOPHIA WEIL
BARBARA WEINBERG
DORIS WHITE
* DOROTHY WILLIS
* RUTHE S. YOUNG

DECEMBER 18-24

* JAY B. ALVIN
SIMON AXELROD
* FRANCIS KOMER BABBIN
JEROME W. BAER
MARILYN BERMAN
* JOSEPH S. BING
* BASIL I. BLATNIKOFF
DEBRA B. BOORSTEIN
* DAVID A. BROWN
* ABRAHAM J. BURKE
BURTON CLAMAGE
LIEBE CLAMAGE
LESTER EDMUNDS

* ESTHER ELLER
* MORITZ L. FEISENBERGER
SARAH FOGEL
* JEROME J. FRANK
WILLIAM FREED
* HELEN FREEMAN
EDITH GANS
SAM GARTE
AARON GELLERMAN
* HARRY GERSON
* JULIE ANNE GERSTEN
* IRVIN GIRER
* GEORGE GOLANTY

ALVIN B. GOLDSTEIN
* SHIRLEY GREENSPAN
* CHARLES GROSBERG
ZELDA GROSS
JILL GURWIN
* LIPPEN HALPERT
HARRY HARELIK
* MARY G. HARRIS
ROWLAND HARRIS
HARRY R. HOCHMAN
* GERTRUDE MILLER
HONIGMAN
* RUTH WAINGER HURWITZ

VICTOR HURWITZ
DOUGLAS JAYE
* MICHAEL M. KABCENELL
* DONALD I. KAPETANSKY
NATHAN N. KAPLAN
EVERETT JOSEPH KATZ
* MAX B. KERNER
* MORRIS W. KOLLIN
ROBERT KOZLOW
DELPHINE LANDAU
RUTH LEHMAN
* MAX LIEBERMAN
NADINE LIPTON

* FRANCES MALIN
PAUL MANDEL
* PHILIP R. MARCUSE
MINERVA MICHALS
* MOSES MORRIS
ZALMAN MULLER
* SARAH NEDERLANDER
STUART M. NELSON
* SETTA B. ROBINSON
* ANN H. ROSENBAUM
SLOAN ROSENZWEIG
GERALD ROWIN
* WILLIAM RUBIN

PAUL E. SCHARF
* MICHAEL SCHUMAN
IRVING SELIGMAN
* MARIE FREUD SIEGEL
ROSE SILVER
* MIGNON G. SOTT
SYDNEY SPERBER
RAE R. STAMLER
* JOSEPH STRAUSS
SAMUEL TELL
SCOT THOUSAND
* SELMA WAGENHEIM
* SIDNEY WALLACE

LEON WEBERMAN
* CAMILLA WEISS
* LAWRENCE WEISS
WILLIAM WETSMAN
* SAMUEL P. WILKUS
* DR. SAM S. WILLIS
* CONSTANCE WINEMAN
* CHARLES S. WOLPIN
LEO ZISHOLZ

DECEMBER 25-31

ANNA ABRAMS
JACOB ADLER
GURSTON SIDNEY ALLEN
* ROBERT SIEGEL AMBERG
* SARAH F. ANTICK
ROSE BARU
PEARLE BASKIN
* MARY BEARMAN
* DR. HARRY B. BENNETT
* SAMUEL BIENENFELD
PHILIP BOLTON
* GUS BRAFF
DAVID BROCKMAN
* HOPE BROPHY
ETHEL A. CHICOREL

FRED H. COHEN
* ALEX COHN
* ANNE COHN
* JOSEPH COHN
* SAMUEL COHN
EDITH DEITCH
HENRY DESMON
SIMON DESMON
* DR. WILLIAM L. DEUTSCH
MARIE DIZIK
* PETER DOBROFSKY
BESS DORFMAN
* SAUL G. DUNITZ
* SYLVIA DUNITZ
DAVID DWOSKIN

* MOLLIE ELLIMAN
* MARION FEINBERG
* MORRY M. FENTON
* EDWARD L. FINE
* JANET FINE
* MYRON J. FINK
MARIA FOLTYN
CLARA FRANK
* DR. SIMON FRANK
* SARA STONE FREEDMAN
LENA GANTZ
GOLDY GINSBURG
* GEORGE G. GOLDBERG
* BERTHA ALLEN GOLDMAN
HERSHEL GOREN

* PEARL GRANT
* DR. LEO A. GREENBLATT
* WARREN D. GREENSTONE
* SAMUEL HERSCH
RUTH HILTON
DR. MORTON HOCHMAN
* MARTHA HYMAN
NATHAN KAHN
* VERA M. KAHN
* SIDNEY J. KARBEL
TERESA KEIL
* MINNIE S. KNOPPER
* HARRY KOMER
JEROME KWARTOWITZ
BARRY LIPTMAN

* HELEN LYNDEY LITMAN
ROSE GOLDBERG LONDON
NEIL LULOVE
ALFRED MAZOR
* DR. HERBERT M. METZ
* SOPHIA NASH
* ANGELA N. NEFOUSE
MABEL ONKIN
* MORRIS PLISNER
* ANNA S. PRENTIS
JOSEPH ROBERT
* CHARLES F. ROSEN
* ALCYCE MICHELSON
ROSENBLATT
MONROE ROSENFELD

* EVA SALOMON
ALEXANDER SCHONBERG
FIVAY SCHRAGER
FRIDA SCHRAGER
* JULES R. SCHUBOT
* HARRY ABRAHAM
SCHWARTZ
BERTRAM M. SHAPERO
EVELYN SHAPERO
* PAUL SHAPIRO
CAROLE SHAYA
ROBERT A. SLOMAN
SABINA SMITH
WILLY SMITH
ISADORE SOLOMON

EDGAR SOMMERFELD
* ESTELLE SPERLING
CAROLE STEARN
* EMIL T. STERN
* HUGO H. STERN
* LEO STERN, JR.
CHARLES THAV
MEYER WATNICK
* DR. LAWRENCE M. WEINER
BERYL WINKELMAN
STUART WINKELMAN
MAURICE WISEMAN

Life Cycles

DECEMBER ANNIVERSARIES

December 1
Rose & David Handleman
Miriam & Ronald Kottler

December 2
Carol & Adam Pollak

December 4
Miriam & Laurence Imerman

December 6
Jill & Daniel Syme

December 7
Shelley & Richard Farkas

December 8
Ann & David Conrad
Heather & Jeffery Vieder

December 10
Katherine & Fred Yaffe

December 11
Jayne & Steven Craig
Jennifer & Michael Fishman
Nancy & Martin Myers

December 12
Mynetta & Adrian Christie

December 15
Sharyl & Alan Ackerman
Jo Ann & Douglas Nyquist

December 16
Kelli & Zvi Rosenzweig

December 18
Linda & Robert Finkel

December 19
Aleksandra & Howard Adelson
Julie & Hanley Gurwin
Carol & Norman Wechsler

December 20
Marion & Michael Freedman
Nancy & Harold Josephson
Sylvia & Lawrence Lee
Ruth & Gilbert Plotnik
Susan & Andrew Saxe
Trudi & Henry Wineman

December 21
Barbara Collins-Fong &
Benjamin Fong

Laurie & Blake Lipman
Sandra & Lee Marks
Marion & Paul Rubin

December 22
Marla & Mark Canvasser
Judith & Roy Goodman

December 23
Harriet & Richard Cooper

December 24
Helen & Martin Katz

December 26
Cheryl & Stan Chodun
Wendy & Jeffery Roth
Elise & Bryan Sandler

December 27
Deena & Stuart Lockman
Elizabeth & Alan May

December 28
Nancy & Brian Kott
Laurie & Michael Nedelman
Cindy & Bruce Stein
Renata & Donald Turner

December 29
Margot & Jerome Halperin
Jane & D. Larry Sherman

December 31
Myra & Ted Harper

DECEMBER BIRTHDAYS

December 1
Adrian Christie
Sandra Foster
Joseph Inwald
Gail Lorber
Lee Marks
Brenda Passer
Sam Wolk

December 2
Nevin Kanner
Erik Morganroth
Sandra Reitelman
Mark Shaevsky
Sara Blum-Stapleton
Harold Stein
Ailene Steinborn

December 3
Isaac Aronson
Rhoda Dicken
Julie Gutman
Bryan Sandler
Davis Victor

December 4
Jan Dunn
Talia Sachs
Forest Wolfe

December 5
Christopher Beider
Gil Golden
Paula Schonberg

December 6
Linda Finkel
Andrea Golombek
Elaine Hartman
Zoey Hill
Beth Morris
E. Jeffrey Shaya

December 7
Marcia Applebaum
Reuven Avi-Yonah
Michelle Chekan
Jennifer Hoffa
Micah Issner
Darryl Kaplan
Jillian Selander
William Stein

December 8
Laura Berman
Raymond Lambert
Linda Levy
Mary Miller
Ellen Sasson

December 9
Brandon Beider
Micayla Greenberg
Jeremy Modell
Evelyn Prince
Felicia Radin
Arlene Rubinstein
Alexandra Wertheimer

December 10
Laura Herkowitz
Gina Salzenstein
Carly Wurn

December 11
Andrew Farbman
Mary Ann Grawi
Brian Homer
David Kaner

December 12
Jennifer Bielfield
Eva Coopersmith
Eva Coopersmith
Louise Sable
Mark Segel
Mary Ann Simon
Carol Tarnowsky

December 13
Samuel Isaac Goodman
Carolyn Greenberg
Elizabeth Guz
Daniel Harold
Katie Kantor
Cathy Lambert
Douglas Schubot
Nancy Shapiro

December 14
Colleen Altman
Rachel Pludwinski
Evan Ross

December 15
Carol Bloom
Robert Canvasser
Barbara Collins-Fong
Karen Rockind
Jerry Shagrin
Gary Stone

December 16
Tristan Kreindler
Carter Lutz
Eric Medwed
Alice Risov
Jean Shapero
Sheldon Stern
Ella Taub
Sara Taub

December 17
Julie Brown
Lori Dresner
Bette Entin
Patty Frenkel
Jacob Miller
Cheryl Pauli
Matthew Shane
Robert Sipher
Emily Unger

December 18
Marcia Buch
Harold Gendelman
Robert Horwitz
Michelle Leader
Jeffrey Mendelson
James Rice
Jane Smitt
Barry Spilman
GoGo Taubman
Elaine Werney

December 19
Mark Benyas
Liv Bortman
Harold Dunn
Abby Foltyn
Lily Foltyn
Ryan Harold
William Nosanchuk
Steven Siporin
Charles Werney

December 20
Daniel Boorstein
Natalie Canvasser
Brady Graff
Joshua Geer
Raphael Lame
Abbey London

December 21
Kalman Goren
Helen Katz
Elena Levine
Chase Powers
Alan Schwartz
Eilat Dayan Vishovski

December 22
Joseph Fearon
Lorraine Jansky
Thomas Millman

December 23
Charles Broh
Camryn Brown
Natasha Dabrowski
William Dash
Howard Gurwin
Ida Lucas
John Mucha
Nolan Munk
Erik Stamell
Samuel Stone

December 24
Andrew Camden
Anita DeVine
Kimberly Gurwin
Brett Panter
Amanda Sloan
Dina Sorser
Arthur Steuer
Rick Unger

December 25
Brian Dickerson
Ronald Fenwick
Jill Gun
Beth Lutz
Esther Simon

December 26
Ronald Gruskin
Lawrence Pazol
Ari Rothstein

December 27
Layne Colman
Rochelle Dube
Carol Egrin
Kenneth Gutman
Paige Hackman
Marjorie Kanner
Justin Levine
Stacy Merolla
Michael Sher
Robert Taubman


December 28
Suzanne Bluestein
Gretchen Davidson
Riley Dorfman
Helen Rowin
Rita Rozenzweig
Jonathan Sher
Elaine Tell

December 29
Ryan Goodman
Jordan Kaplan
Dolly Lax
David Rand
Mallory Shaevsky
Nancy Shamie
M. Cooper Ziecik

December 30
Lucas Alessandri
Leonard Gross
Luke Jacobson
Leslie Mandell

December 31
Joel Behrmann
Deena Lockman
Jake London
Sara Minkin
Owen Rattner
Robert Sills

DECEMBER 2016

SUNDAY	MONDAY	TUESDAY	WEDNESDAY	THURSDAY	FRIDAY	SATURDAY
 <p>9:45 - 10:45 AM EVERY SUNDAY THAT RELIGIOUS SCHOOL IS IN SESSION.</p> <p><i>Free of charge, please bring a yoga mat.</i></p> <p>Questions, contact Forest Levy Wolfe at forestlevy@gmail.com</p>				1	2	3
					6:00 PM Music Shabbat	9:00 AM Torah Study 9:30 AM Tot Shabbat 10:30 AM Shabbat Service 7:00 PM Women of TBE Wine and Chocolate Event
4	5	6	7	8	9	10
8:30 AM B'nai Mitzvah Club 9:00 AM Bro. Breakfast 9:30 AM Religious School Sunday Minyan 10:30 AM WTBE Board Meeting 11:30 AM Women of TBE Hanukkah Baskets BETY Board Mtg Youth Choir Rehearsal NOON Teen Soup Kitchen 4:00 PM Mixing, Making and Maccabee Baking	6:00 PM Monday Night School	7:00 PM TBE Choir Rehearsal	9:30 AM Torah Study w/Lea Beurer 10:30 AM Advanced Hebrew w/Lea Beurer 4:30 PM B'nai Mitzvah Club 7:00 PM Adult B'nai Mitzvah	12:00 PM Beth Elders Lunch and Klezmer Band	5:30 PM Small Fri Shabbat 6:00 PM Shabbat Service	9:00 AM Torah Study 10:30 AM Shabbat Service with the TBE Choir
11	12	13	14	15	16	17
8:30 AM B'nai Mitzvah Club 9:00 AM Brotherhood Breakfast 9:30 AM Religious School and 6th grade family program Sunday Minyan 10:00 AM Masoret 11:30 AM Youth Choir rehearsal 1:00 PM 7th Grade RS	6:00 PM Monday Night School	7:00 PM TBE Choir rehearsal	9:30 AM Torah Study w/Lea Beurer 10:30 AM Advanced Hebrew w/Lea Beurer 4:30 PM B'nai Mitzvah Club 7:00 PM Adult B'nai Mitzvah		6:00 PM Kabbalat Shabbat Shabbat Service	9:00 AM Torah Study 10:30 AM Shabbat service Bar Mitzvah of Mitchell Greenberger
18	19	20	21	22	23	24
8:30 AM B'nai Mitzvah Club 9:00 AM Brotherhood Breakfast 9:30 AM Brotherhood Speaker Religious School Sunday Minyan 10:30 AM 7th Grade 11:30 AM Youth Choir rehearsal 1:00 PM Monthly Mishpachah	6:00 PM Monday Night School 6:30 PM Youth Choir Mitzvah Sing	6:30 PM TBE Choir Mitzvah Sing	9:30 AM Torah Study w/Lea Beurer 10:30 AM Advanced Hebrew w/Lea Beurer 4:30 PM B'nai Mitzvah Club 7:00 PM Adult B'nai Mitzvah		6:00 PM Pre-Hanukkah Shabbat service (latke/sufganiot Oneg)	First Night of Hanukkah 9:00 AM Torah Study 10:30 AM Shabbat Service
25	26	27	28	29	30	31
Second Night of Hanukkah 9:30 AM Sunday Minyan	Third Night of Hanukkah	Fourth Night of Hanukkah	Fifth Night of Hanukkah	Sixth Night of Hanukkah	Seventh Night of Hanukkah 6:00 PM Shabbat Service	Eighth Night of Hanukkah 9:00 AM Torah Study 10:30 AM Shabbat Service <i>New Year's Eve</i>

Shabbat Services

Your Spirit, Your Life, Your Temple.

Shabbat Services at West Bloomfield Nursing Center

Since 2009, lay volunteers from Temple Beth El have conducted Shabbat Services every Friday at 4 pm at the West Bloomfield Nursing Center for the residents. Prayer books are supplied by our Temple, an electric menorah for candle-lighting is utilized, fresh challah is brought by the volunteers for *Hamotzi*, and juice is furnished by the center for the blessing over the wine.

The volunteers are Earl Remer, chair, Jerry Kline, Mark Segel, Sheldon Stern, and Chuck Zamek.

Contact Earl Remer at attyremersbcglobal.net regarding volunteer opportunities.



The Perfect Ending to any Shabbat Service... Enjoying Food With One Another

Each Friday evening & Saturday morning, following services, we gather together to share in the *Oneg* Shabbat or *Kiddush*. Please consider supporting this festive gathering with a donation to the *Oneg/Kiddush* Fund. To sponsor an *Oneg* or *Kiddush* contact Marianne Myers at 248.851.1100 or mmyers@tbeonline.org.

We wish to thank the ...

PRENTIS MEMORIAL LIBRARY

for their gracious sponsorship of the Oneg on Friday, November 18, in honor of Library Shabbat.

FRIDAY, DECEMBER 2

6:00 PM Music Shabbat

SATURDAY, DECEMBER 3

9:00 AM Torah Study

9:30 AM Tot Shabbat

10:30 AM Shabbat Service. Torah Reader: Sara Tatachio

FRIDAY, DECEMBER 9

5:30 PM Small Fri Shabbat

6:00 PM Shabbat Service

SATURDAY, DECEMBER 10

9:00 AM Torah Study

10:30 AM Shabbat morning services with the TBE Choir

Torah Readers: Sara Taub, Ella Taub

FRIDAY, DECEMBER 16

6:00 PM Kabbalat Shabbat

6:00 PM Shabbat Service

SATURDAY, DECEMBER 17

9:00 AM Torah Study

10:30 AM Shabbat Service

BAR MITZVAH OF MITCHELL GREENBERGER



Mitchell Greenberger is a 7th grader at Derby Middle School. Mitch enjoys playing tennis, basketball, soccer and running cross country. For his Mitzvah Project, Mitch has been working with Peer Corps. He tutored Detroit students in various subjects including Chinese. Mitch also has worked with the youth group from Beth El to help out at Temple and at a soup kitchen in Detroit. Mitch is the son of Marc & Julie Greenberger. He is the younger brother of Erin, Jonathan, and Alexa. Mitch is the grandson of Marcia Buch, Robert Greenberger, Renee Durbin and the late Eileen Greenberger, and the late Alvin Buch.

FRIDAY, DECEMBER 23

6:00 PM Pre-Hanukkah Shabbat Service (latke/sufganiot *Oneg*)

SATURDAY, DECEMBER 24 **First Night of Hanukkah**

9:00 AM Torah Study

10:30 AM Shabbat Service. Torah Reader: Bruce Plisner

FRIDAY, DECEMBER 30 **Seventh Night of Hanukkah**

6:00 PM Shabbat Service

SATURDAY, DECEMBER 31 **Eighth Night of Hanukkah**

9:00 AM Torah Study

10:30 AM Shabbat Service. Torah Reader: Sue Green

New Year's Eve



TEMPLE
BETH EL

7400 Telegraph Road
Bloomfield Hills, Michigan 48301
www.tbeonline.org
248.851.1100

Periodicals
Postage Paid at
Royal Oak, MI

TIME VALUED

CLERGY

Mark Miller, Senior Rabbi
Rachel Gottlieb Kalmowitz, Cantor
Megan Brudney, Assistant Rabbi
Daniel B. Syme, Rabbi Emeritus
John Redfield, Honorary Cantor Emeritus

STAFF

Kim Raznik, Executive Director
Deborah Morosohk, RJE, Director of Education
Claire Danaher, Chief Financial Officer
Allan N. Friant, Sr., Building Superintendent
Susie Weiner, Director of Early Childhood Center
Danielle Gordon, Program Director
Joseph Unger, Director of Youth Engagement
Marie Curtis, Senior Graphic Designer
Brett Panter, Digital Media Coordinator
Alan Lowen, B'nai Mitzvah Coordinator
Jim Gabriel, Accompanist
Jan Durecki, Archivist
Joe Winter, Cemetery Superintendent
Morris Collins, Reception/Security
Thomas Jablonski, Executive Director Emeritus

OFFICERS

Jordon Wertheimer, President
Robin Fenberg, Vice President
David Foltyn, Vice President
Maxine Lievois, Vice President
Warren Rose, Vice President
Adam M. Lutz, Treasurer
Liz Modell, Secretary

AFFILIATES

Elaine Brockman, Beth Elders
Julian Prince, Brotherhood
Elaine Schonberger, Women of Temple Beth El
Forest Wolfe, The Kid-ish Club
Max Richardson, Beth El Temple Youth (BETY)

Silent Auction

Chocolate
Tastings by
Local Vendors

Entertainment
by John Persico

Catered by
Cutting Edge
Cuisine



WOMEN OF TBE'S ANNUAL WINE & CHOCOLATE TASTING EVENT

Featuring
MICHIGAN
WHISKEYS

SATURDAY, DECEMBER 3 at 7:00 PM

Join us for an Evening of Wine, Chocolate, Michigan Whiskeys & Food Tastings

\$25 PER PERSON

For more information contact Elaine Schonberger at 248.227.3282

EVENT AUCTION PREVIEW

4 DAYS FOR UP TO 5 IN CHICAGO
WEEKEND IN CHICAGO
WEEK IN SOUTH HAVEN FOR UP TO 12

ALINA ALLEY PHOTOGRAPHY
MGM GRAND DETROIT
DINNER PARTY IN YOUR HOME

GOOD VIBRATIONS BIKE FROM HUFFY
PISTONS VS. TRAIL BLAZERS
RED WINGS VS. BLUES

View more auction items online at tbeonline.org