

Gi

Glazer
Institute

Monday, April 27
1:00 - 3:00 pm

The Legacy of Vatican II 50 Years of Interfaith Relations

"By sharing our hopes, dreams, concerns, and fears, we can chart a course forward."

Beginning in the dark days of World War II, Rabbi B. Benedict Glazer brought clergy friends together at Temple Beth El to talk about better understanding and mutual respect. His legacy continues to this day, as we proudly present the 73rd Rabbi B. Benedict and Ada S. Glazer Institute on Judaism.

Throughout the decades, Beth El has been a leading voice in the broad discussion among faith leaders, and we have hosted an illustrious range of scholars at the Glazer Institute. This year, we build on those successes as we offer a Glazer Institute that is intended to hold up the high ideals of Rabbi Glazer, while adapting to the changing needs of our society.

...more details on pg 4



the Bulletin

The Joys of Shabbat



MUSIC SHABBAT

A high-energy, spiritual, thought-provoking service. Families and all ages will walk away uplifted, recharged, and connected.

**FRIDAY, APRIL 10
7:30 PM**

Come for the music, stay for the friends!



Plant and Play Small Fri Shabbat

We're growing something special at this Small Fri Shabbat!

Especially for families with children ages 0-6+.

FRIDAY, APRIL 24
Service: 5:30 pm - Dinner: 6:00 pm

JOIN US FOR THIS EXCITING "Plant and Play" Small Fri Shabbat!

We'll have a family service of singing and prayers followed by a kid-friendly dinner by Cutting Edge Cuisine, as well as wine! After dinner, we'll plant baby trees in our TBE courtyard and play together outside.

OPEN TO THE COMMUNITY

RSVP to Julie Rolnick at jrolnick@tbeonline.org or 248.851.1100 ext 3143.

Join Us For Tot Shabbat



A fun, musical Saturday morning experience for families with children, ages 0-6+.

Saturday, May 9
9:30 am Service in the Chapel, Oneg & activity following.

Family Kabbalat Shabbat



Friday, May 8 6:00 pm

Celebrate Shabbat with a delicious traditional family-style Shabbat dinner by Cutting Edge Cuisine.

Especially for families with elementary-aged children, siblings welcome!

Shabbat music and fun activities for the entire family!
\$5 per person

RSVP to Julie Rolnick at jrolnick@tbeonline.org or 248.851.1100 ext. 3143.

Yizkor and Plaque Dedication

**Friday, April 10
10:30 am**

*The plaques that are being
dedicated include:*

Estelle Robinson
Bobbie Levy Goldberg
David Keith Page
Shirley S. Weiner
Bonnie Michelson

save the
date
11 | 07 | 15
TBE 165 Gala

Join us in
celebration
of our 165th
Anniversary
at Temple's
Gala Event

An Evening of Learning And Remembrance



YOM HASHOAH SERVICE

WEDNESDAY, APRIL 15, 7PM

Yom HaShoah has become a vital
part of the Jewish calendar, as we
remember the horrors and celebrate
the heroes of the Holocaust era.

Join your Temple family for a moving
ceremony, which will leave us with a
feeling of hope for
the future.



Walk Together With Our Beth El Group As We Celebrate ISRAEL!

**The Annual Walk for Israel +
Run For Israel 5K and Family Fun Run!**

A COMMUNITY WIDE EVENT
SUNDAY MAY 17

Hosted by Temple Shir Shalom, 3999 Walnut Lake Road

5K Run 8 am Programs 11 am Free Kosher Lunch 12:30 pm Walk 1:30 pm

To join the "TBE Walking Team" contact Laura in the Rabbis' Study,
llucassian@tbeonline.org or 248-851-1100, ext.3142.

To register or learn more visit www.WalkForIsrael.org

Passover Carry Out Menu CUTTING EDGE CUISINE

Call Today - 248-865-0629

Dessert

Coconut Lime Macaroons- \$7 dozen
Matzo Toffee- \$12 bag
Chocolate Chip Mandelbread- \$12 dozen
Cinnamon Pecan Mandelbread- \$12 dozen
Fudge Brownies- \$14 dozen

Pick Up
April 3rd -2pm-4pm

Pick Up Location
7400 Telegraph Rd
Bloomfield Hills,
48301

Seder Essentials

Gefilte Fish- \$4.50 each
Chopped Liver- \$11 pound
Charoset- \$9 quart

Chicken Soup- \$8 quart
Matzo Balls- \$1.50 each

Seder Dinner

PROTEINS

Braised Beef Brisket- \$15 pound
Roasted Turkey Breast- \$13 pound

SIDES- Feeds Approximately 10

Herb & Garlic Roasted Yukon Gold Potatoes- \$32
Potato Kugel- \$30
Orange, Cinnamon, & Vanilla Glazed Sweet Potatoes- \$32
Sweetened Matzo Kugel- \$32
Roasted Brussel Sprouts & Onions- \$30

Passover

THE SPIRIT OF PESACH

By Rabbi Mark Miller



Each year when we sit down at the Seder table, we recite the ancient words: "My father was a wandering Aramean." (*Deuteronomy 26:5*) We often think of Abraham, the first Jew, and how his wandering led eventually to our People's covenant with God and connection to the Land of Israel. Others equate this verse with Jacob, who was spiritually lost when he was in Aram. And some commentators insist that the Aramean is Laban, who tried to destroy Jacob and is equated with all who threaten our community.

To me, the Aramean is much closer. Passover is a time for us to celebrate the great trek to liberation our ancestors undertook thousands of years ago ... and to commit ourselves to the same march to freedom that others demand today. "Next year in Jerusalem" is an existential statement. It doesn't mean that we should all go to Israel next year (but definitely think about joining our congregational trip, described on page 5 of this bulletin). Instead, we should ensure that the holy splendor of Jerusalem is more present in all of our lives.

Here at Temple Beth El, we take that imperative seriously. We are gearing up for a series of initiatives to draw us closer to the wider community, and that will help each of us live out our historical mission of Tikkun Olam (repairing the world). This month, as we host a very different kind of Glazer Institute, our hope is that it will help us connect to our interfaith partners, build stronger relationships, and position us to extend the spirit of Passover throughout the year.

Chag Sameach – Have a wonderful Passover!

Join your TBE family and friends for the annual retelling of the Passover story at our ever popular, community-wide 2nd night Seder!

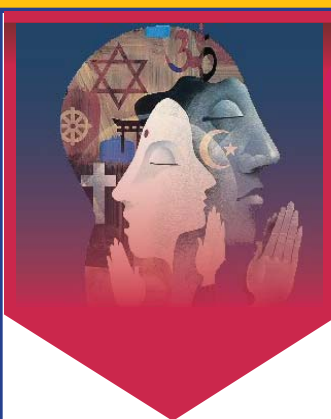
Beth El Family Seder

This joyful and interactive Seder will include songs, videos, conversation and a delicious meal catered by Cutting Edge Cuisine.

SATURDAY, APRIL 4, HANDLEMAN HALL, 6 PM

Adults: Members, \$40 Non-Members, \$45
*Children 12 and Under: Members, \$23/Non-Members, \$24

To RSVP contact Julie Rolnick at 248.851.1100, ext. 3143 or jrolnick@tbeonline.org.



Gi Glazer Institute

The 73rd Annual
Rabbi B. Benedict &
Ada S. Glazer Institute
on Judaism

*"Behold how good and pleasant it
is to dwell together in unity ..."*
(Psalm 133)



We hope that you will plan to be at **Temple on April 27** between 1-3 pm, and make a point of inviting friends of any background to join us. You can look forward to:

Conversation. Our goal is to convene a wide segment of the interfaith community so that we might sit together, learn together, pray together ... and build a future together. Dialogue is the key, and our Institute will revolve around this opportunity to build stronger relationships.

Clergy and lay leaders together. Although the Glazer Institute was historically a clergy event, we hope spiritual leaders will bring congregants, members, and friends to take part in this important discussion.

Celebration. Vatican II (and specifically the Nostra Aetate document) revolutionized relationships between the Catholic Church and many faith communities. Just as importantly, it helped usher in a period of interfaith dialogue and openness that has resulted in stronger connections between many groups.

Common destiny. This year's Glazer Institute is meant to utilize Nostra Aetate as a jumping off point for us to determine, together, what the religious nature of our city will hold for the next 50 years. By sharing our hopes, dreams, concerns, and fears, we can chart a course forward.

The Glazer Institute is one of TBE's finest moments each year ...

but to be successful, we need our own members to be part of the program. For more information, or to RSVP, please contact Laura Lucassian in Rabbi Miller's office at llucassian@tbeonline.org or 248-851-1100 ext. 3142.



TEMPLE
BETH EL

InterFaith Leadership
COUNCIL
of Metropolitan Detroit

MICHIGAN
ROUNDTABLE
of Metropolitan Detroit



TEMPLE BETH EL'S
165TH ANNIVERSARY

Journey to Israel

October 13-25, 2015



Don't miss your first opportunity
to travel to Israel with
Rabbi Mark and Rachel Ann Miller.

Phyllis Loewenstein, Chair

For more information, email Phyllis at
yedida@aol.com and put 'Israel Trip'
in the subject line.

7 SUNDAYS

Jewish Parenting and Jewish Living

SUNDAY, APRIL 19 and 26 at 9:30 AM



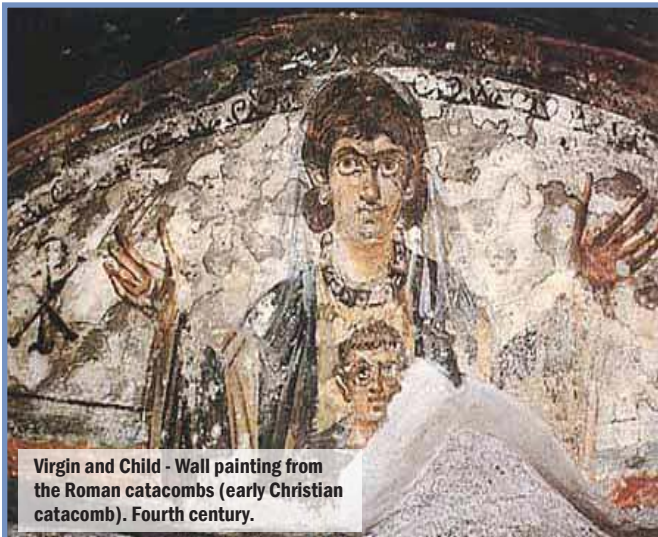
LEARNING SERIES
NO CHARGE

Led by Program Director, Rachel Rudman

April 19: Making Shabbat Fun for Kids

April 26: Learn to Make and Braid Challah

For more information, contact Julie Rolnick at
jrolnick@tbeonline.org or 248-851-1100 ext. 3143.



Virgin and Child - Wall painting from
the Roman catacombs (early Christian
catacomb). Fourth century.

The Origins of Christianity: AN INTRODUCTION

Join us after services for a special learning opportunity
with Jana Von Gott and Rabbi Daniel Syme.

Saturday, April 25 and May 2 12:30 pm

Jana Von Gott has been studying Scripture, Hebrew and Christianity
for almost 25 years, comparing them doctrinally and historically.
She graduated from the University of Michigan with degrees in both
English and Political Science, and a minor in Economics. She has
seven children and one grandchild.

For more information or to RSVP, please contact Julie Rolnick at
248.851.1100 ext. 3143 or jrolnick@tbeonline.org.

We Love Purim!

Everyone Had Loads of Fun!



We would like to thank the following sponsors for supporting this year's YPS Purim Carnival.

Cindy & Eric Bolokofsky
David & Elaine Brockman
Paul Dizik
Jason & Emily Dizik
Robin & Michael Fenberg
The Kalmowitz Family

Dr. Robert & Joan Jampel
Patti Phillips
Julie Rolnick
Debbe Saperstein
Cathy Segel
Robert & Treger Strasberg
TBE Brotherhood
TBE Sisterhood
Audrey Zupmore

Mitzvah Meals

We meet the needs of the less fortunate in our community.



THIS MONTH'S PICK UP DATE IS TUESDAY, APRIL 28

What better way to show your support to those in need, than with a contribution to Mitzvah Meals? Your gift to Mitzvah Meals will ensure that those in need in our Jewish community will not go hungry. To date, thanks to your contributions and our partnership with Jim Hiller of Hiller's Markets, we have provided over 110,000 meals!

This month, we would like to issue a most special thank you to Rabbi Syme for being a blessing to Mitzvah Meals and for his immense contribution to this program.

As always, our thanks to our Mitzvah Meals volunteers. Our February crew, headed by chair, Deloris Weinstein, included Irv Barron, Maxine Ben Yuri, Bob Dickstein, Ann Flood, Helen Klau, Estelle Kleiman, Dolly Lax, Sue London, Gail Lorber, Irv Lorber, Karen Lowen, Rita Packard, Carol Schock and Florence Schuman

Our thanks as well to our "volunteer caterers" who fed the volunteer crew - Adele Goldstein, Karen Lowen, Rita Packard and Deenie Zonder. A special thank you to Matt Hammond and Damon Kaigler of our Maintenance Staff for assisting with Mitzvah Meals this month and to Aaron Lowen from Cutting Edge Cuisine, for the use of their truck. Our thanks as well to the TBE staff members who volunteer monthly and Hiller's Markets for their ongoing generosity.

Honor or remember family and friends and help sustain the work of Mitzvah Meals with your \$36 donation to the program. Make your checks payable and mail to Temple Beth El, 7400 Telegraph Road, Bloomfield Hills, MI 48301, attn. Mitzvah Meals.



SUPPORT TEMPLE BETH EL WITH EVERY PURCHASE YOU MAKE FROM AMAZON!

AmazonSmile is the same Amazon you know.

Same products, same prices, same service.

Begin by going to www.smile.amazon.com. Log in to your Amazon account at the right with your regular user name and password. Choose Temple Beth El in Bloomfield Hills as your charitable organization of choice.

Browse and purchase your items, and Temple Beth El's Library will receive 0.5% of your eligible AmazonSmile purchase.

Kids Bop



More than a hundred guests filled Handleman hall, grabbed their glow sticks and bopped to a musical beat provided by Joe Cornell Entertainment at this year's Kids Bop on Sunday, March 22nd.

Kabbalat Shabbat



Temple Beth El hosted a Family Kabbalat Shabbat, Friday, March 20th. The program included a traditional family-style Shabbat dinner catered by Cutting Edge Cuisine, joyful songs and blessings. Families brought home their handmade art projects featuring a family photo with the Shabbat blessing of the children.

Temple Beth El Sisterhood

The Sisterhood of Temple Beth El cordially
invites you to our

Annual Donor Luncheon

Honoring
Cindy Bolokofsky
for her commitment to
Sisterhood and her extraordinary
service to Temple Beth El

WEDNESDAY, APRIL 22
11 AM - 3 PM

Lunch at Noon - Handleman Hall

Shop our Boutique Gallery 11am - 3pm

Questions please call 248.851.1100, ext 3135.

PROCEEDS WILL BENEFIT RELIGIOUS SCHOOL

Luncheon \$25 \$ _____

Angel \$36 \$ _____

Silver \$100 (1 lunch included) \$ _____

Gold \$200 (1 lunch included) \$ _____

____ I regret I cannot attend. Enclosed is my contribution of \$ _____

Total number of people attending _____

Total amount enclosed \$ _____

Name (s) _____

Address _____

Phone _____

My check is enclosed in the amount of \$ _____

or charge to my Visa/Mastercard

Number _____

Exp. Date _____ Security Code _____

Name as it appears on the card _____

Please indicate with whom you would like to be seated on the back of this card.

Make checks payable and mail to: Temple Beth El,
7400 Telegraph Rd., Bloomfield Hills, MI 48301
Attn: Sisterhood Donor Luncheon



The Sisterhood of Temple Beth El
Cordially invites you to our

Progressive Dinner

SATURDAY EVENING

~ **MAY 16** ~
6:00 PM

Join us for a fun evening of
Wine • Appetizers • Dinner • Dessert

All adults welcome
\$25 per person

Space Limited • First Come/First Serve

Questions: Judy Pazol
248-505-1416 • jppazol@aol.com



Total Attending _____ X \$25 = _____

Name(s) _____

Address _____

Phone _____ Email _____

My check is enclosed for the amount \$ _____

-Or- charge my credit card

Number _____

Exp. Date _____ Security Code _____

Name on Card _____

Temple Beth El 7400 Telegraph Rd. Bloomfield Hills, MI 48301
Attn: Sisterhood Progressive Dinner

ENJOY BREAKFAST WITH BROTHERHOOD!

Sunday mornings when Religious School is in session at 8:30 am in Handleman Hall.
BAGEL & COFFEE \$2 FULL BREAKFAST \$3



**BROTHERHOOD SPEAKER SERIES
NO CHARGE**

**April 19, 2015
JEWS OF
SHANGHAI**

Speaker:

Berl Falbaum

AUTHOR OF
***Shanghai Remembered:
Stories of Jews Who Escaped to
Shanghai from Nazi Europe***

It is a little known fact that about 20,000 Jews fled Nazi Europe to escape to Shanghai. In an effort to save this history, Berl Falbaum, long-time journalist and author, wrote about his personal story and those of the other "Shanghailanders".

OPEN TO THE COMMUNITY

Breakfast begins at 8:30am with the Speaker beginning at 9:30am.
Cost for breakfast is \$3.



Beth Elders
of Temple Beth El
*formerly the Ambassadors of
Temple Beth El*

The Beth Elders provides opportunities to make new friends and renew old friendships, through social & cultural programs for those 55 years of age and older.

Our active Board of Directors meets the first Tuesday of each month to plan our monthly luncheons, entertainment, bus trips and social events.

All our events are open to the community.

**Membership is open to both Temple
and non-Temple members.**

Current membership dues are \$15 per person per year, which permits members to enjoy functions both within and outside of Temple. The Beth Elders' programs are supported largely by contributions from the Howard and Celia Jacobson memorial Fund for the Ambassadors, supplemented by a modest dues structure.

We welcome you, your family members and friends to join us and enjoy our programs and activities.

Early Childhood Center

ECC SPRING BREAK
Thursday, April 2 – April 10
School resumes Monday, April 13

ECC Fun Days
Monday, April 6th – April 8th
from 9:30 a.m. – 2:30 p.m.

4 year olds at the Matzah Factory



ECC FALL REGISTRATION

Our high quality early childhood center provides a play-based setting, which helps our children thrive and have fun as they learn. Staff is devoted to providing our children and their families a safe, nurturing, relaxed, warm, and loving place where children grow and thrive.

For more information or to tour TBE's Early Childhood Center, contact Lauren Blitz at lblitz@tbeonline.org or 248-865-0611.

YOGA GLO

Thursday, April 16 7pm
Open to the community!
All fitness levels welcome!

\$20 in advance or \$25 at the door. Refreshments to follow.

For more details or to RSVP,
contact the ECC office at 248.865.0611.



LAUGH
LEARN
& GROW
TOGETHER

Sensational Camp Beth El!

We are now
accepting ECC fall
applications,
please call for a
private tour.



JUNE 15 - AUGUST 7
Camp Beth El
For Children Ages 2-5 Years
Experienced Staff

AUGUST 10 - 14
Safety Town
For Kindergarten Bound Kids

**Put TBE Summer
Camp in Your
Family Plans
Today!**

- Flexible schedule
- Water fun, special guests, gardening, arts & crafts
- Weekly themes
- Choose from 2, 3, 4 or 5 half or full day programs

CONTACT: Lauren Blitz, ECC Director
248-865-0611 or lblitz@tbeonline.org



Religious School

New Group! - Grades 1-5
JEWniors

Grades 6-8
JYPS

Grades 9-12
YPS

TEMPLE BETH EL RELIGIOUS

SCHOOL is the heart of a Jewish life-long learning endeavor that provides students a comprehensive Jewish Education. We motivate students to build a meaningful foundation in our community and embrace a deep-rooted love of Judaism and Israel. Our school works to develop Jewish leaders who exemplify personal pride, compassion and social responsibility with the intent of improving the world (Tikkun Olam).

APRIL 5 - 12

No Religious School or Monday Night School.

MAY 3

Last Sunday of Religious School.

SUNDAY, APRIL 19

5th grade field trip to Shalom Street.

Students will see the Jewish side of gaming and the people who created them.

SUNDAY, APRIL 19

6th graders take a historic Jewish Detroit bus tour.

SUNDAY, MAY 3

5th graders will present their Jewish Hero Museum, a version of a wax museum where attendees will have the opportunity to see students give a brief biography of the hero they researched. Reader's Club awards will be given out.

FOR MORE INFORMATION ON ANY RELIGIOUS SCHOOL PROGRAMS:

Ilene Stone at
istone@tbeonline.org
or 248.851.1100, ext. 3126.

YOUTH PROGRAMMING AT TEMPLE BETH EL

gives children and teens the opportunity to make friends, build community and engage with their Jewish peers outside of the classroom.

Through a combination of social, religious and cultural programming, we strive to provide our youth with positive experiences in order to encourage life-long commitment to Am Yisrael – the Jewish people.

SUNDAY, APRIL 19, 12-3:30PM

3-5TH GRADE JEWniors GO TO AIRTIME!

Get ready for dodge ball, mosh pits and slam-dunks with your TBE friends!

All participants must fill out an online e-waiver at www.airtimetrampoline.com.

TBE members \$20 (non-members \$25) includes bus transportation, lunch and two hours of jumping at Airtime in Troy. 3-5th graders only.

MAY 2 AT 6 PM - MAY 3 AT 9 AM

YPS LOCK-IN AT TBE!

Spend the night hanging out with your friends at Temple Beth El!

Chinese food, gaga pit, relay races in the halls, sundae bar, movies and games in Benton's Place.
Open to 8-12th graders

TBE members \$10 (non-members \$15) includes dinner, breakfast, snacks and activities.

FOR PROGRAM INFORMATION ON JEWniors, JYPS OR YPS CONTACT

Rachel Rudman at rrudman@tbeonline.org or 248.851.1100 ext 3169.

RSVP FOR ANY YOUTH PROGRAMS CONTACT

Julie Rolnick at jrolnick@tbeonline.org or 248.851.1100 ext. 3143.

Preserving History and Providing Resources

An Archivist's Dream

by Jan Durecki, Archivist

"An archivist's dream." That is the phrase I used in a thank you letter I wrote to Charles Robinove. Along with my wonderful crew of volunteers, I have just begun to process the family correspondence, photographs, diaries, family trees, scrapbooks and yearbooks along with countless other treasures that Charles shipped to the Rabbi Leo M. Franklin Archives from Colorado. We have just scratched the surface of the twelve cases that were sent to us and I am amazed by the depth and breadth of their contents. The Netzorg and Robinove Collection, as Charles noted, is the story of an average Jewish families in the United States. The story began in Lithuania when Michael Netzorg sent six sons and a daughter to seek their fortunes in America. Many of them wound up in Michigan where they joined the lumbering industry, opened stores and started small retail businesses. Much of the material sent to us comes from the Battle Creek area where the family was involved in the retail trade. Over the years the Netzorgs spread throughout the United States. The family has diligently chronicled its history and stayed connected through family reunions.



Muriel Netzorg Robinove
practicing French
millinery techniques

While thumbing through an album of photographs taken by Bendetson Netzorg, I happened across an image of Myron Barlow – the artist who painted the ceiling murals at the Woodward and Gladstone synagogue. Just how Barlow was connected to the Netzorgs is a mystery yet to be solved.

Charles' mother Muriel Netzorg married Joseph Robinove. As a youngster Charles attended Temple Beth El's Religious School. He received a B.S. in geology from Wayne University in Detroit and joined the U.S. Geological Survey in 1954 where he was employed until his retirement. Charles has published over 60 scientific papers on hydrology and related fields and lectured at numerous universities. In retirement, he has devoted this time to running a rare and used book business in Colorado. I expressed to Charles how appropriate it was for his family's collection to find an archival "home" in Michigan where so much of their early history began.

Whether your family's story is as extensive as the Netzorg/Robinove collection, or a bit more modest in size, it deserves the protection and organization that the Rabbi Leo M. Franklin Archives can provide. Don't hesitate to contact the archives to discuss placing your collections here to assure their safekeeping.



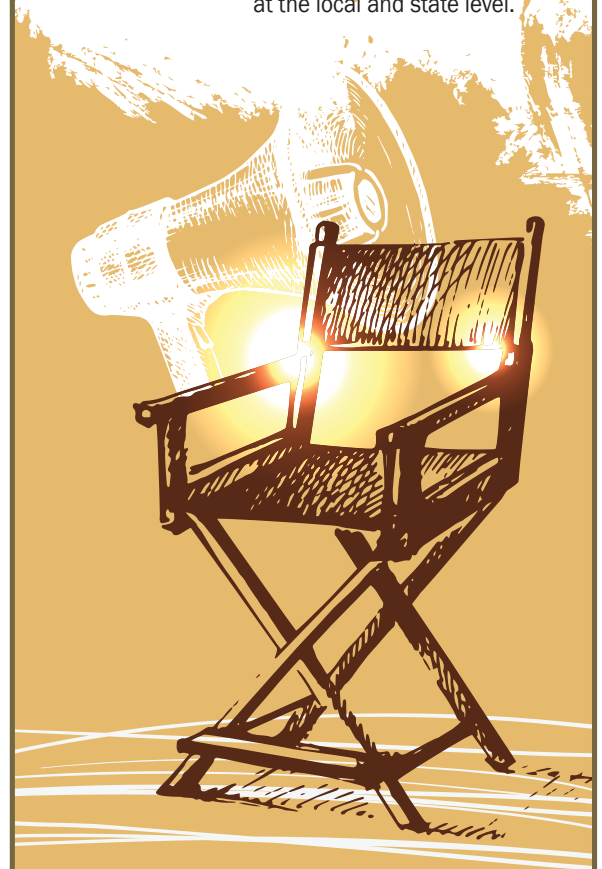
A Jewish History Detectives Lecture Lights, Camera, Action

Jewish
connections
to the movie
industry in
Michigan,
1900 - 1950.

**Tuesday, October 13
7 pm Maas Chapel**

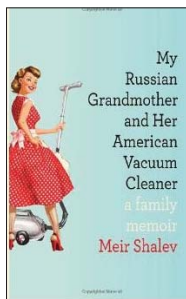
Save the date and join us for this interesting look at the early film industry in our home state.

A sincere thank you to Dr. Robert and Joan M. Jampel who underwrite this annual lecture series that focuses upon unique aspects of Jewish history at the local and state level.



Bagels & Books/ Bites & Books

MONDAY, MAY 11



My Russian Grandmother and Her American Vacuum Cleaner

by Meir Shalev

“Grandma Tonia was never seen without a cleaning rag over her shoulder. She allowed only the most privileged guests to enter her spotless house. The fate of Tonia’s “svieeperrr”—hidden away for decades in a bathroom—is a family mystery Shalev determines to solve. The result, is pure delight, as he brings to life Tonia, the pioneers who gave his childhood its spirit of wonder, and the grit and humor of people building new lives.” Facilitator - Marilyn Schelberg, Judaic Educator.

Bagels & Books will meet in the Library at 10 am.

Bites & Books will meet in the Alpert Room at 7 pm.

The series cost is \$30 (\$25 for Friends of the Library & Sisterhood members.) There is a \$10/session drop-in fee.

Prentis
MEMORIAL LIBRARY

LIBRARY HOURS:

Monday and Tuesday: 10 am - 4 pm
Wednesday: 1 - 6 pm
Sunday: 9 am - Noon



Contact Eileen Polk,
Librarian at
epolk@tbeonline.org or
248.865.0627 with
any questions or
comments, or to
RSVP for events.

Chag Sameach everyone! The spring holidays culminate in Passover and then we get a breather. Enjoy the down-time by participating in the following library programs.

AUTHOR APPEARANCE SUNDAY, MAY 3 at 9:30 AM



Award winning author and journalist, **SARA DAVIDSON**, will be at Temple Beth El on Sunday morning, May 3 at 9:30 am to read from and discuss her book, ***The December Project***. A 2014 finalist of the National Jewish Book Awards, The December Project tells of the two years she spent meeting once a week with Rabbi Zalman Schacter-Shalomi, the charismatic founder of the Jewish Renewal Movement. Together, with humor and sensitivity, they explored the big question, “When you can feel in your cells that you’re coming to the end of your tour of duty, what is the spiritual work of this time, and how do we prepare for the mystery?”

The December Project will be available for purchase and signing by the author.

Passover Recipe

Let’s be honest, the best thing about Passover is the desserts!

CINNAMON BALLS

From *The Complete International Jewish Cookbook* by Evelyn Rose

Bake only as long as directed to ensure that the biscuits remain soft and moist inside.

Preheat oven to 325

2 egg whites (at room temp.)

Confectioners’ sugar for rolling finished cookies.

4oz. (½ cup) superfine sugar

½ lb. (2 cups) ground almonds

1 level tbsp. cinnamon

Beat the egg whites until they form stiff peaks. Fold in all the remaining ingredients. Form into balls with wet hands. Bake on a greased tray for 25 minutes or until just firm to the touch. Roll in confectioners’ sugar while still warm, and then again when completely cooled. Makes about 24 cookies.

Note: When folding dry ingredients into beaten egg whites, use a metal spoon. A wooden spoon will crush out the air that has been beaten in.



RAYMOND & SHIRLEY ABRAMS YOUTH GROUP RECREATION FUND

IN MEMORY OF

DR. SIDNEY LEITSON

KEN SINGER

Wendy & Henry Abrams

IN HONOR OF

75TH BIRTHDAY OF BOB GITTLEMAN

90TH BIRTHDAY OF MORRIE ROCHLIN

Wendy & Henry Abrams

BURT G. ARDEN LIBRARY MEMORIAL SHELF

IN MEMORY OF

IN MEMORY OF MY GRANDMOTHER,

REBECCA ARDEN

Ellin Arden Lawson

RUTH FRANKLIN EINSTEIN EDUCATION ASSISTANCE FUND

IN MEMORY OF

SUSYE OBERFELDER

Margie & Bill Oberfelder

IN HONOR OF

BIRTHDAY OF JOHN REDFIELD

Margie & Bill Oberfelder

BARBARA PRENTIS FRENKEL MEMORIAL FUND

A CONTRIBUTION

Marvin Frenkel

GENERAL OPERATING FUND

IN MEMORY OF

ADELE S. BLOCK

Douglas Block

DR. STANLEY LEVY

Inez Cane

MAX CROOGLOFF

Adele Goldstein

MARABEL HACKELMAN

Millie Jacobson

WINIFRED BRODER

Thea & Stuart Kayne

BEN PERLOVE

BELLE PERLOVE

Toby & Rob Kleinberg

ARNOLD ARONOFF

MELVYN JOSEPH STOLLMAN

Brenda & Sandy Passer

ANNETTE ROSE

Sidney Rose

MARVIN C. GROSS

Chuck Zamek

Audrey Zupmore

WILBERT KAIGLER

Chuck Zamek

A CONTRIBUTION

Clarkston United Methodist Church,

Chuck Zamek

GLAZER ELEMENTARY SCHOOL ADA S. AND RABBI B. BENEDICT GLAZER MEMORIAL FUND

IN MEMORY OF

EDWARD RUBY, FATHER OF MANIA GLAZER

MARVIN SONNY MORRIS

Stephanie Glazer Ettelson

PAUL AND SONIA HANDLEMAN MEMORIAL FUND

IN MEMORY OF

DR. IRWIN PHILLIPS

WILBERT KAIGLER

Rose & David Handleman

RABBI RICHARD C. AND RENDA HERTZ GIFT OF LIFE FUND

IN MEMORY OF

RODMAN MYERS

Shelly & Peter Cooper

Ellen Lichterman

IN HONOR OF

KAREN AND FRED SINGER ON THE

BAR MITZVAH OF YOUR GRANDSON, AIDAN

MICHELLE AND KEITH SINGER ON THE

BAR MITZVAH OF YOUR SON, AIDAN

Shelly & Peter Cooper

SPEEDY RECOVERY TO PENNY AVIG

Harriet & Mark Cooperman

SPECIAL BIRTHDAY OF NATALIE KRAMER

Ellen Lichterman

DAVID HULL MEMORIAL FUND

IN MEMORY OF

SONIA GARFIELD

Karen Hull

HOWARD AND CELIA JACOBSON MEMORIAL FUND FOR THE BETH ELDERS OF TEMPLE BETH EL

IN MEMORY OF

DR. IRWIN PHILLIPS

Renee & Tom Jablonski

FLORENCE SEEDBERG

Gordon Seedberg

JEWISH WAR VETERANS IN SUPPORT OF LIBRARY

A CONTRIBUTION

Jewish War Veterans

THE BABS & HERB KAUFMAN LISTEN IN FUND

IN MEMORY OF

ALFIE

Herb Kaufman

RODMAN MYERS

Phyllis Loewenstein & Sheldon Plotnik

IN HONOR OF

15TH ANNIVERSARY OF SANFORD

AND BRENDA PASSER

30TH ANNIVERSARY OF HENRY

AND WENDY ABRAMS

55TH BIRTHDAY OF MARK CANVASSER

70TH BIRTHDAY OF STUART MICHAELSON

75TH BIRTHDAY OF ARNOLD JOSEFF

100TH BIRTHDAY OF A. RICHARD TISCHLER

Babs & Herb Kaufman

THE ANNIVERSARY OF

MARK AND MANIA GLAZER

RICHARD AND JANE SCHWARTZ

SHELDON AND LORRAINE ALKON

JAMES AND CATHY DEUTCHMAN

Babs & Herb Kaufman

BIRTHDAY OF

DENISE BROWN

GAYLE CAMDEN

CONNIE COLMAN

M. KENNETH DICKSTEIN

JAMES DEUTCHMAN

MARJORIE FEDERMAN

MYRNA FISCHER

ELAINE GREENSPAN

SANDRA HERMANOFF

MYRON LABAN

IDEANE LUBY

ROBERTA WEBER

Babs & Herb Kaufman

THE MIGNON H. AND EUGENE KRAFT FUND

IN MEMORY OF

WINNIE BRODER

ALVIN DUNN

AARON KRAFT

Jackie & Larry Kraft

DAVID AND JEANETTE LEACH COLLEGE SCHOLARSHIP FUND

IN HONOR OF

THE SPECIAL BIRTHDAY OF JIM HALL

Barbara & Stephen Morse

MARSHALL & PHYLLIS LOEWENSTEIN FAMILY CAMPSHIP FUND

IN MEMORY OF

ED BLUMBERG

HERB RACKLIN

Phyllis Loewenstein & Sheldon Plotnik

ISADORE & FRANCES MALIN INTERFAITH ACTIVITIES FUND

IN MEMORY OF
WILBERT KAIGLER
Earl Remer

THE MICHELSON-HABER MEMORIAL FUND

IN MEMORY OF
CAROL ISAACSON
Barbara & Jonathan Haber
MARVIN FULLETT
RAYMOND GALPER
James Michelson Jr. & Beth Michelson

RABBI MILLER DISCRETIONARY FUND

IN HONOR OF
THE BABY NAMING OF HANNA SORSER
Dr. & Mrs. Serge Sorser
A CONTRIBUTION
Jason & Denise Charnas

TEMPLE BETH EL MITZVAH MEAL FUND

IN MEMORY OF
ROBERT GARVETT
Harriet & Mark Cooperman
RICHARD EGRIN
Estelle Egrin
ERIKA CORBY
Dr. Herbert & Margot Gardner
MARVIN C. GROSS
Frances & Joseph Gross
Eleonor & Jeff Jenks
WILBERT KAIGLER
HAROLD BLOCK AND SHIRLEY SOLOMON
Eileen Millstone
CECILE DREYER
Regina & Alcide Piche
FREDA VERNOFF
Frayda Riger & Family
DEANNA WEISMAN ROSE
Harriet & Norm Rotter
WILBERT KAIGLER
Karen & Alan Lowen
Marianne Myers
Abby Suckow
IN HONOR OF
40TH ANNIVERSARY OF
MARY AND LARRY EPSTEIN
Cathy & Jim Deutchman
JIM HILLER
Myrle & Richard Leland
ALAN AND RUTH HURVITZ
Karen & Alan Lowen
BIRTHDAY OF PHYLLIS LOEWENSTEIN
Ruth & Gil Plotnik
A CONTRIBUTION
*Board of Trustees, Debbie & Eric Canvasser,
Margaret Gantz, Matthew Hoffman,
Rita & Herb Packard, Evelyn & Julian Prince,
Sunday Minyan*

HARRY & SALLY NOSANCHUK CARING COMMUNITY FUND

IN MEMORY OF
EDWIN BLUMBERG
RODMAN N. MYERS
GRACE NAFTALY
HERBERT RACKLIN
JEFF SURNOW
The Circus Family
IN HONOR OF
55TH BIRTHDAY OF MARK CANVASSER
Mr. Harry Nosanchuk
THE BAR MITZVAH OF JACOB BLUMENTSTEIN
The Circus Family
BIRTHDAY OF
DR. WILLIAM FLOYD
ELAINE GREENSPAN
RUTH GROSS
SIDNEY LIFTON
DR. SCOTT SIRCUS
FRED YAFFE
Mr. Harry Nosanchuk
FLORINE MARK
Mr. Harry Nosanchuk
The Circus Family
STEVEN WEISBERG
The Circus Family

MEYER AND ANNA PRENTIS RELIGIOUS SCHOOL FUND IN MEMORY OF JIMMY MORRIS & WALLY STRAUS

IN MEMORY OF
DR. IRWIN PHILLIPS
Abby & Kurt Suckow

FRIENDS OF THE PRENTIS LIBRARY FUND

IN MEMORY OF
DR. IRWIN PHILLIPS
*Marie & Jerry Curtis, Peggy & Dennis Frank,
Eileen & Richard Polk, Harriet Prentis*
IN HONOR OF
BARBARA GRANT
Denny Brown
A CONTRIBUTION
*Linda Blumberg, Margot & Herb Gardner,
Marcia Harris, Beverly Peterman,
Cathy Segel, Bob & Susan Sovel*

SISTERHOOD BRAILLE FUND

IN HONOR OF
40TH ANNIVERSARY OF
CINDY AND ERIC BOLOKOFISKY
Elaine & Mark Schonberger

SISTERHOOD PHILANTHROPIC FUND

IN MEMORY OF
DR. IRWIN PHILLIPS
Sue & Jeff Goldsmith and Family
IN HONOR OF
CINDY BOLOKOFISKY FOR HER DEDICATION
AS OUR VOLUNTEER EXECUTIVE DIRECTOR
Harriet & Mark Cooperman

RABBI DANIEL SYME DISCRETIONARY FUND

IN MEMORY OF
CAROL ISAACSON
CATHY TROHMAN
Pearl & Bob Solomon
IN MEMORY OF
SARAH ENGLE COPLEY
Regina & Alcide Piche
A CONTRIBUTION
George Chaney

MAMIE AND JASON TICKTON MUSIC FUND

IN MEMORY OF
MARVIN C. GROSS
*Jeffrey Betman, Sarah Hartman-Silow &
Andrea Hartman, Sue & Jeff Goldsmith and
Family, Penny & Sy Nagel, Frayda Riger ,
Mary K. Roth, Judy Schwartz, Elaine &
Bob Tell*

MARCIA H. YOUNG MEMORIAL ISRAEL SCHOLARSHIP FUND

IN MEMORY OF
EDWIN BLUMBERG
ROD MYERS
GORDON NYQUIST
Deena and Stuart Lockman

* Tributes February 6 through March 9, 2015

APRIL ANNIVERSARIES

APRIL 1

Jerry & Betty Schare
Donald & Esther Simon- 55th

APRIL 2

David & Elyse Foltyn- 15th
Jeffrey & Susan Goldsmith

APRIL 3

Ned & Joan Winkelman

APRIL 4

Ben & Reesa Handelsman

APRIL 5

Samuel & Julie Beznos
Robert & Jacqueline Simon

APRIL 6

Charles & Sandra Jacobowitz

APRIL 7

Boris & Yevgeniya Pukhlik
Alexander & Kelly Stewart

APRIL 8

Burton & Susan Farbman

APRIL 9

Harvey & Marlene Goodman
Herbie & Nicole Jahr- 15th
Harlan & Bonni Simmons

APRIL 10

Steven & Jennifer Lewis

APRIL 11

David & Debra Franklin- 30th

APRIL 12

Burton & Sandra Wolfe

APRIL 13

Stuart & Terri Litt

APRIL 14

Barry & Alicia Pearlman

APRIL 15

Robert & Dorothy Vernan
Sam & Gloria Wolk

APRIL 16

Louis & Barbara Bradfield-
15th
Jeffrey & Sheila Siegel

APRIL 17

Adam & Jodi Becker
Michael & Erica Cahn
Douglas & Wendy Hamburger

APRIL 18

Warren & Margot Coville

APRIL 19

Matthew & Jennifer Shane

APRIL 20

Martin & Debra Darvick- 35th

APRIL 22

Dustin & Traci Feldman

APRIL 23

Robert & Stephanie Wineman

APRIL 24

Andrew & Gayle Camden
Dennis & Peggy Frank- 50th

APRIL 25

Stuart & Tracye Schwartz- 5th

APRIL 27

Daniel & Jody Boorstein
David & Julie Rollins
Ted & Mary Ann Simon

APRIL 28

Jeffrey & Marci Graff
Steven & Amy Miller
William a& Ashley Slatkin
Arnold & Marlene Slutzky

APRIL 29

Lawrence & Mary Fox
Jonathan & Stephanie Sher

APRIL 30

Peter & Christine Glasier- 10th
Alex & Liana Spiegel

APRIL BIRTHDAYS

MARCH 31

Lucille Gersten
Lissa Hurwitz
Charles Jacobowitz
Maxwell Jacobson
Michelle Lame
John Lawson
Ryan Soble
William Stern-60th

APRIL 1

Marcia Delidow
Marci Graff
Michael Hauser
Mark F. Loewenstein
Janey S. Ross
Jeffery Roth
Cindy Stein
Alec Strumban
Andra Winkelman-Barr

APRIL 2

Jeannie Dubin
Laura Freedman
William Gershenson
Jo Isaacson- 85th
Joan Jampel
Ilene Lisak
Tom Pazol
Bowen Vernan

APRIL 3

Robert Freeman-55th
Barbara Goldman
Hanley Gurwin
Ted Harper
Ross Kaplan
Elliot Luby
Betty Maltz
Julian Prince-75th
Alexander Sorser-60th
Jeremy Wolfe
Lawrence Zisholz

APRIL 4

Hannah Canvasser
Michael Fenberg
Lauren Goodman
Brian Marcus
Robert Resnick-60th
Julie Taubman
Robert Tell

APRIL 5

Michelle Blau
Mary Jo Chapman
Harvey Goodman
Joan Halpern
Mya Joseff
Debbie Kaplan
John Kuhn
Ellin Lawson
Barbara Levinson
Matthew Rappaport
Laurie Saham
Garry Saperstein- 55th
Betty Schare
Kenneth Sills

APRIL 6

Elyse Foltyn
Stewart Frank
Lawrence Hoffman
Judy Jassenoff
Irwin Lorber-80th
Laurie Nedelman
Nancy Rosen
Amy Simon
Barbara Urdan
Melissa Zieve-Miller

APRIL 7

Jonathon Aaron
Margaret Cicurel
Dean Friedman
Roy Goodman
Alan May
Scott Schwartz

Gwen Weiner
Laura Winkelman
Emma Wolman

APRIL 8

Randall Blau
William Deitch- 30th
Traci Feldman
Lindsay Fortier
Marcia Harris
Alexandra Hurwitz
Robert Kleinberg
Rachel Miller
Ashley Slatkin

APRIL 9

Elliott Greenspan
Susie Rosenberg

APRIL 10

Alan Ackerman
Gail Alpert
Rachel Borenstein
Amy Greenberg
Joseph Kaufman-65th
Kurt Schwartz
Adam Seltzer
Lisa Singer
Rene Taub
Paul Urdan
David Wineman-55th
Robert Wineman

APRIL 11

Betty Applebaum
Amy Barron
Randi Decker
Gary Goodman
Amy Horwitz
Herbert Kaufman
Peter Len Rodgers
Norman Rotter
David Schonberg
Steven Siegel-35th

APRIL 12

Jayne Cohen
David Delidow
Jerry Kline
Lauren Leland
Kerri Moss
Gloria Perlmutter-
Hecker
Warren Rose
Pamela Rosenblum
Peter Ross
Christina Trogan
Lawrence Warren

APRIL 13

Cathy Deutchman
Robin Fenberg
David Franklin
Franklin Grawi
Heidi Gross
Jerome Halperin-85th
Richard Kerwin
Jennifer Macbain
Michelle Rosenblum
Paul Rubin-70th
Brian Siegel
Ron Yolles-55th

APRIL 14

Heather Dreyfuss
Jennifer Floyd
David Foltyn-60th
Andree Goldsmith
Nicole Kessler
Ellen Lichterman
Meme Resnick
Max Roberts
Jodi Robin
Pearl Solomon

APRIL 15

Judith Burdick
Arlene Gendelman
Marni Rosenthal
Richard Soble

APRIL 16

E. David Brockman
Rhea Brody
Susan Green
Seth Halpern
Ariada Ilyasov
George Simmons-90th
Joel Waldbott

APRIL 17

Norton Chaiken-60th
Elizabeth Dubin
Howard Jacob
Margo Kline
Yevgeniy Rits
Rabbi David Shapero
Randall Sills
Barry Solomon
Samuel Beznos

APRIL 18

David Bloom
Arvene Dickstein
Chuck Gross-55th
Gabriel Hall
Richard Pastor
Lawrence Pearl

APRIL 19

Margot Coville
Stuart Novick
Amy Shapero
Jennifer Soble
Stacey Trager

APRIL 20

Jordan Benyas
Debra Darvick
Edward Levy
Julie Raider
Kathy Jo Rosen

APRIL 21

Maxine Canvasser
Peter Cooper

Mary Epstein

Margery Kaplan
Margery Komer
Elizabeth Kott
Yevgeniya Pukhlik
Constance Ross
Michelle Stern
Lawrence Weitzman-
70th
Joan Winkelman

APRIL 22

Edward Burg
Cathy Mendelsohn
Francine Menken
Aaron Mondry-30th
Matthew Papsin
Keith Schonberger
Marina Smorgonsky
Julie Weitz

APRIL 23

Mary Fox
Joshua Friedman-30th
Jessica Hull
Karin Johnson-Mitchell
Adam David Scher-55th

APRIL 24

Suzette Chaiken
Bradley Fortier
Heather Kamins
Lawrence Lee
Daniel Redstone

APRIL 25

Joseph Bloch
Ronnen Golombek
David Handleman
Brian Kott
Marcia Leland
Samuel Schulak
Stephen Shapiro
Bonnie Simmons
David Steinberg
Dr James Weintraub

APRIL 26

Elisa Dreyfuss
Doug Fortier-60th
Richard Gilmore-65th
Adele Goldstein
Nancy Josephson
Phyllis Kaplan
Marc Pearl-65th
Mark Stewart
Jennifer Zeidman

APRIL 27

Lawrence Bluth
Jodi Weiss

APRIL 28

Jay Berman
Erica Charnas
Joseph Craine
Lauren Hirsch
Jeanne Jacobson
Leonard Newman
William Sandy
Daniel Weberman
Jordon Wertheimer-
35th

APRIL 29

Phyllis Cohen
Lissa Kalt
Andrea Page
Amy Pappas
Dana Segal Weinstein
Jeffrey Sturman

APRIL 30

Brian August
Ryan Cohn
Nicole Finn
Carolyn Greenberg
Gregory Kreindler
Ruth Plotnik
Dr. Laurel Sills

In Memoriam

WE NOTE WITH SORROW THE PASSING OF...

Bernice "Sis" Birnkrant

Mother of Stephen (Frann) Birnkrant and Jon (Carol) Birnkrant; grandmother of Michael, Jaclyn, Allison, and Jeffrey Birnkrant.

Edna Chosid

Mother of Richard (Cherie) Chosid and Paul (Ruth) Chosid; grandmother of Robin Chosid-Brown and Harold (Chip) Brown, Pamela Chosid, Matthew and Katie Chosid and Michael Chosid.

Florence Gaynes

Mother of Susan (Robert) Kraus, David (Ruth) Gaynes and Perry (Haviva) Dror; grandmother of Amos Gaynes and Danielle, Ben and Ron Dror.

Karen Graff

Wife of Jeff Graff; mother of Jason Graff; grandmother of Riley and Brady; sister of Victor (Gloria) Summey, Gail Arnold and Rick (April) Sterly; daughter-in-law of Laurie Graff-Figg.

Marabel Hackelman

Mother of Cyndy Sandberg; grandmother of Lauren Sandberg and Erinn Sandberg; sister of Lorraine Blanck.

Ruth Merdle

Mother of Joan (Michael) Basloe; grandmother of Brian (Lindsay) Basloe.

Edna Minkin

Mother of Jerold (Ellen) Minkin and Dr. Richard (Karen) Minkin; grandmother of Jodi (Barry) Spilman, Michael Minkin, Jeremy (Lupe) Minkin, Alexander (Sharon) Minkin, Alex Fenkell and Jane (Matthew) Kushner.

Rodman N. Myers

Father of Rodman Jay (Patricia) Myers; grandfather of Rodman John Myers and Sarah Clare Myers.

Herbert Racklin

Husband of Marilyn Racklin.

Gerald R. Strauss

Husband of Sue S. Strauss; father of Anne (L. Steven) Weiner; grandfather of E. Emilie, G. Robert and M. Madeline Weiner.

Norman Wachler

Husband of Helen Wackler; father of Edye Wachler, Buzz (Mindy) Wachler, Rick (Isabelle) Zolkower, Terry (Jerry) Matlen, and Harry (Anne) Zolkower; grandfather of Lori (Kevin) Miller, Brad (Melissa) Wachler, Emily (Tim) Brennan, Kate Matlen, Mackenzie Matlen, Anna (Marc) Sherman, Rebecca Zolkower, Sara (Sam) Kramer, and Emily Zolkower.

Robert Werney

Son of Rose Werney; brother of Charles (Elaine) Werney.

MARCH 29-APRIL 4

* BELLE ALEXANDER
* ANNE ALVIN
* ETHEL BEARMAN
* ROBERT BENSON
* FRANK BERMAN
* NATHAN BERNSTEIN
* CELIA BESBRIS
* GERTRUDE BURSTON
* GEORGE CHARNAS
* FELICE CHESNOW
* ANNE COHEN

REBA COOPER
* PAUL CORBY
ROSE CROOGLOFF
EUGENE CURTIS
JO ANN ENGELSON
WILLIAM ENGELSON
* LOUIS ESTON
* EARL FENWICK
JACOB FREEMAN
* MAX GERSTMAN
* JOSEPH GESELIS

* ANNA GOLDBERG
* MORTON GOTTESMAN
SAMUEL GROSS
* DR. PEARL BAU HAUSER
BERNARD HAYDU
DAVID HUBERT
REVA JACOB
* LOIS JACOBOWITZ
DOROTHY KATZ
JULIUS KATZ
TOBY KAUFMAN

ISAAC KUSHNER
JOSEPH LAPIDES
MORRIS LAZAR
* HELENE LENZNER
RUTH LEVINSON
* DORA LEVY
STANLEY LEWIS
* JACK MACWILLIAMS
ARTHUR MARCUS
BERNARD MELLITZ
JONATHAN MICHELSON

* LAWRENCE MICHELSON
EARLE MOSTYN
ROBERT NEWMAN
* ROBERT NOVITZ
PAUL PACKARD
FRIEDA PLUDWINSKI
HENRY PLUDWINSKI
SYLVIA POLLACK
LOUIS REDSTONE
SYLVIA ROBINS
ALTON ROHAN

* RAE RUBIN
MORRIS RUDIN
RAE RUDIN
* SYLVIA SAMUELS
MILDRED SAND
WENDY SCHAEFER
ARTHUR SCHOTT
HENRY SCHWARTZ
* JOSEPH SIEGEL
* BEATRICE STRICHARTZ
* EMANUEL SWEETWINE

BENJAMIN TAUBER
* BENJAMIN WAGENHEIM
* EVELYNE WEINER
* JOSEPH WEINER
PHILLIP WEISS
* JULIUS YOUNG
FAY ZISHOLZ
* JULIE ZOHOTT

APRIL 5-APRIL 11

DOROTHY ABRAMSON
IDA AGABRA
* SIDNEY ALLEN
E. ALPERN
* LAURA BARNETT
* LILLIAN BENSON
BENITA BORNSTEIN
ROSE BRESS
* JAMES BROPHY
BETTY CHAPRACK
META COHEN
ROSELLA COOPERMAN

* LOTTIE DEYOUNG
MAURICE ELKIN
SALLY EPSTEIN
JACK ESEROW
* MARTEN FELDSTEIN
* CONSTANCE FENTON
SAMUEL FOGEL
* BARBARA FRENKEL
* DOLLY FRIEDMAN
SHELLY GELLER
* MOLLIE GLASIER
HELEN GOLDIN

FRANCES GURWIN
* CHARLES HARRIS
* VERA HAYMAN
MARY-LOUISE HERTZ
* BEATRICE HORWITZ
ESTELLE HYMAN
* MABEL KALLET
* DONALD KELLER
* HELEN KELLER
BLANCHE LEVINE
DAVID LEVY
MILFORD LEWIS

* ALFRED LINDENBAUM
* ANNETTE LUBIN
* LEONARD LUBIN
MATILDA LUFTSCHEIN
* JOHN LURIE
HILDA MANKO
ARTHUR MANN
* ELAINE MASKIN
* GEORGE MASKIN
SYLVIA MAY
ESTELLE MELLE
* LEO MICHELSON

* PETER MILLER
BETTY NOVICK
ESTHER PASTOR
* ISIDOR PERITZ
JACOB PRYSTOWSKY
JOSEPH REISS
MARY ROBINER
* EDWARD ROSENBERG
BERNARD ROSENFELD
RACHEL ROSENKRANZ
* JUDITH ROSS
* ALICE ROTENBERG

* MAX SAZZMAN
* SARAH SAZZMAN
* ROSETTA SCHREIBER
MAURICE SCHWARTZ
MORRIS SHILLMAN
ROSE SIEGEL
* HAROLD SMILAY
BENJAMIN SNIDERMAN
* HELEN SOTT
* MAXINE SPIEGEL
* JACOB STIGLITZ
* NEDRA STRASNER

* LEAH TABASHNIK
* ANNE TICKTON
* HARRIET TURNER
BESSIE UDAY
LOUIS URDAN
* MARQUERITE WALLACH
JANIS WARREN
JOHN WELLER
JOHN WINEMAN
SAM WOLFE
EDITH WOLFGANG
* JUDITH ZWIEG

APRIL 12-APRIL 18

IRVING ACKERMAN
* SAMUEL AGREE
MARTIN APPLE
LEAH BIEBERSTEIN
ROSE BLOCK
MARVIN BLOOM
DAVID BURNSTEIN
FANNY CALFIN
* MAURICE CAPLAN
MAX CAPLAN
* MAX CHAFETS
ANN COHEN
* ROBERT COHEN
ARNOLD CROOGLOFF

* ADOLPH CURSON
* BEBE DICKSTEIN
* ROLLA DONER
* HATTIE FISMAN
GERTRUDE FOSTER
ETHEL FRANKLIN
JOSEPH FREEDMAN
* DANIEL FRIEDMAN
TOBIAS FULLER
LEONA GINN
ALMA GLASER
* ALEX GOLDBERG
STEVEN GOLDIN
ANNA GOLUBOVSKY

LILLIAN GOODMAN
HENRY GORDON
EMANUEL GREEN
LILLIAN GREENBLATT
* ROSE GROSBERG
LEE HARBURGER
STANLEY HEILBRONNER
* WALTER HERZ
LOUIS HOLLAND
ARTHUR HOWARD
* EDWARD KAHN
* SAMUEL KATZ
SARAH KATZ
* SOL KONIKOW

* DENNIS KOVAN
SAM KRASNEY
* WILLIAM KUNSTLER
MILTON LAMBERT
JEAN LAX
LILLIAN LEVENSON
LIVIU LIBRESCU
* MAX LITMAN
* MAX LOEWENSTEIN
MANUEL MACKIE
FAE MARBELL
* FLORENCE MARGOLIS
* MARTIN MILLER
* REGINA MILLER

CHARLOTTE MINTZ
* LILLIAN MOORE
* BENJAMIN NEWMAN
* RUTH PEARL
MARK PERLMUTTER
* MEYER PHILLIPS
JONATHAN PLAUT
GINDA RATNER
EDWARD RAVITZ
* CEIL SAPERSTEIN
* MELVIN SAPPERSTEIN
* MAX SCHUSTER
BENJAMIN SEGAL
SEYMOUR SELTZER

HARVEY SHAPIRO
RONDA SHAPIRO
* SAM SHOICHT
DAVID SILVER
* NATHAN SLAWIN
* LOTTIE SOLOMON
DOROTHY SPITZER
MARGUERITE STARK
* RIVKE STEINMAN
CELIA STERN
SYLVAN TABOR
* MIRIAM TABOR
* HARRIET WALTZ
* ANNA WARREN

* HERMAN WARREN
* SIDNEY WARREN
JOSEPH WEITZ
* ARNOLD WERNEY
BABETTE WILDER
* JULIAN WOLFNER
NATHAN ZLATKIN
HELEN ZUCKERMAN

APRIL 19-APRIL 25

* HARRY ADAMS
* HELEN ALLEN
HARRIET ALPERN
* BENJAMIN ALPERT
SYLVIA BAKER
ETHEL BARRON
LESTER BASKIN
* DAVID BAUM
FAY BERENBON
DR. THEODORE
BERGMAN
* ARTHUR BERNSTEIN
* SIDNEY BERTIN

* NATHAN BLANCK
* BESS COHEN
* JACK COHEN
* REGINA CROW
* PEARL DELIDOW
ROBERT DUNCAN
* MAX DUNITZ
* JACK ECKER
FLORENCE ESEROW
* FRED ETTINGER
ELAINE FISH
* JACOB FISHER
* FAY FISMAN

* FRANCES FISMAN
* MICHAEL FISMAN
JULIUS FLEISCHER
* KATE FRANK
* MARILYN FRIEDMAN
* MABEL GINN
* GRACE GOODFRIEND
BERTRAM GREEN
PHILIP GROSS
* PHILLIP HANDLEMAN
* MARIAN HEAVENRICH
* LOUIS JAFFE
* JACOB KATZ

JENNIE KATZ
NEAL KOENIG
DAVID KOHLBERG
ERIC KOMMEL
* BERTHA KOSITCHEK
HENRY LEFKOWITZ
* THERESA LEWIS
* MOLLIE LIEBERMAN
* ESTELLE LINKNER
* SAM MANDEL
* STELLA MARKS
* LENA MAURICE
* ARTHUR MILLS

RUTH MORRIS
ESTHER MOSKOWITZ
MAX MOSKOWITZ
* HARRY MOSS
LOUISE OZER
KAREN RADOM
* ROBERTA RAPAPORT
* TERRY REINITZ
* FELIX ROSENWACH
* MAX SABLE
* MILDRED SALLAN
JEREMY SALOMON
ALLEN SAPERSTEIN

KATHRYN SCHEUER
KURT SCHEUER
SYLVIA SCHONBERGER
ANNE SHAPIRO
LEONARD SILBER
* ESTELLE SILVERMAN
LOUISE SIMONS
* PHILIP SOLOMON
ABRAHAM SPERLING
BEN STEIN
SAMUEL STERN
SIMON TABACHNIK
BENJAMIN TUCKMAN

* LENA WALDBOTT
* SIDNEY WARREN
JOSEPH WEITZ
* ARNOLD WERNEY
RUTH WESTHEIMER
BABETTE WILDER
ABRAHAM WILLENS
MELBA WINER
* JULIAN WOLFNER
LOUIS YOUNG
NATHAN ZLATKIN
HELEN ZUCKERMAN
* LILLYE ZUCKERMAN

Please consult the Shabbat Schedule on page 19 for Service times. * Denotes Memorial Plaque will be lit in the Goldman Memorial Room.

APRIL 2015

WEDNESDAY 1	
9:30 am	Torah Study Class
10:30 am	Advanced Hebrew
11:30 am	Conversational Hebrew
4:30 pm	B'nai Mitzvah Club Religious School
FRIDAY 3	
<i>Erev Passover</i>	
1:00 pm	Building Closes for Passover
4:00 pm	Brief Shabbat Services
SATURDAY 4	
9:00 am	Torah Study
10:30 am	Shabbat Services
6:00 pm	2nd Night Family Seder
SUNDAY 5	
Building Closed	
MONDAY-WEDNESDAY 6-8	
ECC Fun Days	
9:30 am - 2:30 pm	
WEDNESDAY, 8	
9:30 am	Torah Study Class
10:30 am	Advanced Hebrew
11:30 am	Conversational Hebrew
FRIDAY 10	
10:30 am	Yizkor Service and Plaque Dedication
7:30 pm	Music Shabbat
SATURDAY 11	
9:00 am	Torah Study
10:30 am	Shabbat Services
SUNDAY 12	
9:30 am	Sunday Minyan
MONDAY 13	
6:00 pm	Monday Night School
MONDAY 14	
7:00 pm	TBE Choir Rehearsal
WEDNESDAY 15	
9:30 am	Torah Study Class
10:30 am	Advanced Hebrew
11:30 am	Conversational Hebrew
4:30 pm	B'nai Mitzvah Club Religious School
7:00 pm	Yom Hashoah Service
THURSDAY 16	
<i>Yom Hashoah</i>	
7:00 pm	Yoga Glo
FRIDAY 17	
7:30 pm	Shabbat Services with TBE Choir
SATURDAY 18	
9:00 am	Torah Study
10:30 am	Shabbat Services with TBE Choir

SUNDAY 19	
8:30 am	Grades 3-5 Sunday Only Option Brotherhood Breakfast- Guest Speaker: Berl Falbaum
9:30 am	Sunday Minyan 7 Sundays-Jewish Parenting & Jewish Living Religious School Religious School 5th graders go to Shalom Street Religious School 6th graders take a Jewish tour of Detroit JEWniors go to Airtime
12-3:30 pm	
MONDAY 20	
6:00 pm	Monday Night School
WEDNESDAY 22	
<i>Yom Hazikaron</i>	
9:30 am	Torah Study Class
10:30 am	Advanced Hebrew
11:00 am - 3:00 pm	Sisterhood's Annual Donor Luncheon
11:30 am 4:30 pm	Conversational Hebrew B'nai Mitzvah Club Religious School
THURSDAY 23	
<i>Yom HaAtzma'ut</i>	
7:15 pm	Board of Trustees Meeting
FRIDAY 24	
5:30 pm 7:30 pm	Small Fri Shabbat Shabbat Services
SATURDAY 25	
9:00 am	Torah Study
10:30 am	Shabbat Services
12:30 pm	The Origins of Christianity: An Introduction
SUNDAY 26	
8:30 am	Grades 3-5 Sunday Only Option Brotherhood Breakfast
9:30 am	Sunday Minyan 7 Sundays-Jewish Parenting & Jewish Living Religious School Youth Choir Rehearsal
Noon	
MONDAY 27	
1 - 3 pm 6:00 pm	Glazer Institute Monday Night School
TUESDAY 28	
12 - 3 pm	Mitzvah Meals Pick-up
WEDNESDAY 29	
9:30 am	Torah Study Class
10:30 am	Advanced Hebrew
11:30 am	Conversational Hebrew
12:30 pm	End of Life Decision Making
4:30 pm	B'nai Mitzvah Club Religious School
7:30 pm	End of Life Decision Making

MARK YOUR CALENDARS!

MAY 2-3
YPS Lock-In at TBE

MAY 3
Religious School Hero Museum
Author Appearance-Sara Davidson

MAY 8
Family Kabbalat Shabbat

MAY 9
Tot Shabbat

MAY 11
Bagels & Books
Bites & Books

MAY 13 & 27, JUNE 10 & 24
End of Life Decision Making

MAY 16
Sisterhood Progressive Dinner

MAY 17
Walk for Israel

June 15-August 7
Camp Beth El

JULY 19
Community Motown Concert

OCTOBER 13
Jewish History Detectives Lecture:
Lights, Camera, Action

OCTOBER 13-25
Journey to Israel

NOVEMBER 7
TBE 165 Gala

BOARD MEETING SCHEDULED

The April meeting of the Temple Board of Trustees is scheduled for Thursday, April 23 at 7:15 pm in the Board Room.

Shabbat Services

Your Spirit, Your Life, Your Temple.



The Perfect Ending Each Shabbat... Enjoying Food With One Another

Each Friday evening and Saturday morning, following services, we gather together to share in the Oneg Shabbat or Kiddush and enjoy one another's company. We ask you to consider to help maintain this festive atmosphere with a donation to the Oneg/Kiddush Fund to help defray the costs when there is no sponsor. Your gift will be recognized in the monthly Bulletin.

Celebrate Special Events With Your TBE Family

Sponsor a Friday evening Oneg or Saturday morning Kiddush. For sponsorships call 248.851.1100, ext. 3121.

FRIDAY EVENING, APRIL 3

4:00 pm Brief Shabbat Services

SATURDAY MORNING, APRIL 4

9:00 am Torah Study:

10:30 am Shabbat Services

Parashah/Torah portion of the week: Yom Rishon shel Pesach /Exodus 12:37-42, 13:3-10

Torah reader: Sara Tatachio

6:00 pm 2nd Night Family Seder

FRIDAY EVENING, APRIL 10

10:30 am Yizkar services and plaque dedication

7:30 pm Music Shabbat

SATURDAY MORNING, APRIL 11

9:00 am Torah Study:

10:30 am Shabbat Services

Parashah/Torah portion of the week: Sh'mini I / Leviticus 11:1-23

Torah reader: Susan Green

FRIDAY EVENING, APRIL 17

7:30 pm Shabbat Services with TBE Choir

SATURDAY MORNING, APRIL 18

9:00 am Torah Study:

10:30 am Shabbat Services with the TBE Choir.

Parashah/Torah portion of the week: Sh'mini II /Leviticus 9:1 - 11:47

Torah reader: Nancy Fortier

FRIDAY EVENING, APRIL 24

5:30 pm Small Fri Shabbat

7:30 pm Shabbat Services

SATURDAY MORNING, APRIL 25

9:00 am Torah Study:

10:30 am Shabbat Services. Parashah/Torah portion of the week: M'tzora /Leviticus 14:1-15:33

Torah reader: Rachel Rudman



Share your Simchas with your Temple Family

Engagements, marriages, births or special accomplishments

If you or a family member would like us to share your good news in *The Bulletin*, please contact Halye Aisner by mail at 7400 Telegraph Rd., Bloomfield Hills, MI 48301, phone 248.851.1100 ext. 3166 or haisner@tbeonline.org.



TEMPLE
BETH EL

7400 Telegraph Road
Bloomfield Hills, Michigan 48301
248 851-1100
www.tbeonline.org



save ^{THE}
date
11 | 07 | 15

TBE 165 Gala

Join us in celebration of
Temple Beth El's 165th
Anniversary at
TBE 165 Gala Event!

Periodicals
Postage Paid at
Royal Oak, MI

TIME VALUED

CLERGY

Mark Miller, Rabbi
Daniel B. Syme, Rabbi
Rachel Gottlieb Kalmowitz, Cantorial Soloist
John H. Redfield, Honorary Cantor Emeritus

STAFF

Kim Raznik, Executive Director
Deborah Morosohk, RJE, Director of Education
Abby Suckow, Chief Financial Officer
Allan N. Friant, Sr., Building Superintendent
Arlene Keller, Religious School Principal
Lauren Blitz, Director of Early Childhood Education
Rachel Rudman, Program Director
Halie Aisner, Communications Coordinator
Marie Curtis, Graphic Design
Alan Lowen, B'nai Mitzvah Coordinator
Jan Durecki, Archivist
Eileen Polk, Librarian
Joe Winter, Cemetery Superintendent
Thomas Jablonski, Executive Director Emeritus

OFFICERS

L. Steven Weiner, President
John Kessler, First Vice President
David Foltyn, Vice President
E. Todd Sable, Vice President
Jordan Wertheimer, Vice President
Robin Fenberg, Treasurer
Liz Modell, Secretary

AFFILIATES

Betty Schare & Elaine Brockman, Beth Elders
Jeffrey Hollander, Brotherhood
Janelle McCammon, Sisterhood
Loren Schwartzfeld & Forest Wolfe, The Kid-ish Club
Mitch Boorstein, Young People's Society

TEMPLE BETH EL
PRESENTS



End-of-Life Decision Making: The Law, Jewish Tradition, and Practical Concerns



Presented by
ANDREW J. BRODER

with
Rabbi Mark Miller and
Rabbi Daniel Syme

*Each session will be
presented Wednesdays*

**12:30 PM and
7:30 PM at
TEMPLE BETH EL**

OPEN TO THE COMMUNITY
NO CHARGE

Light refreshments.
Advance reservations encouraged.

In cooperation with



For more details or to RSVP, contact
Julie Rolnick at jrolnick@tbeonline.org or
248.851.1100 ext. 3143.

- SESSION ONE - APRIL 29:** End-of-Life Decisions, Legal Perspective
- SESSION TWO - MAY 13:** End-of-Life Decisions, Jewish Perspective
- SESSION THREE - MAY 27:** Common Myths and FAQ
*With guest presenter, Dr. Michael Paletta,
a palliative care expert.*
- SESSION FOUR - JUNE 10:** Advanced Directives
- SESSION FIVE - JUNE 24:** Dealing with Disputes & Conflicts
Regarding End-of-Life Decisions